

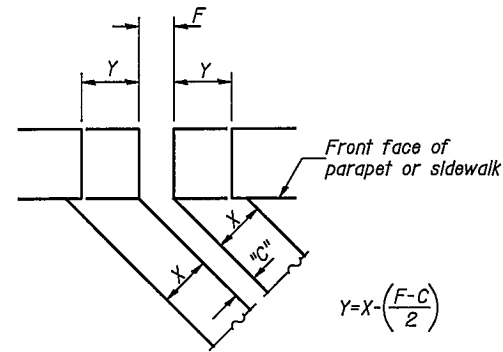
Joint Size	"C" at 50°F	"D" at 50°F
4"	3"	2 1/2" Min.

INSTALLATION NOTES

- Install continuous seal in roadway, parapet, curb, and sidewalk.
- Install anchor blocks as indicated.

NOTE A: Maximum spacing of anchor bolts shall be 12" centers.

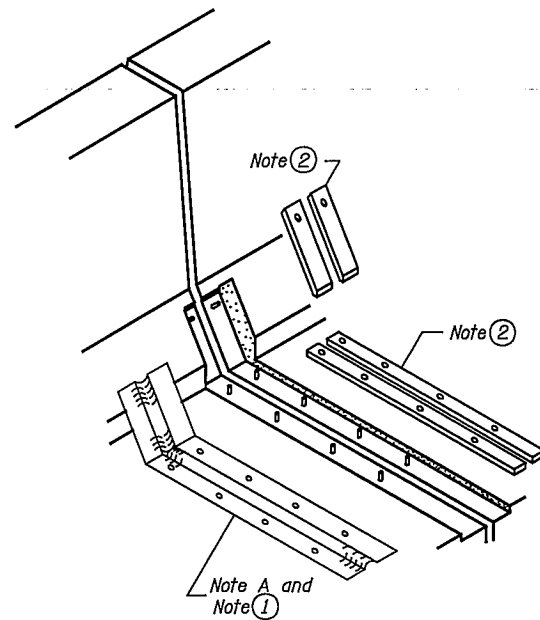
NOTE B: The dimension shall provide sufficient depth for the joint material plus two 1/8" adjusting shim plates plus 1/4" clearance.



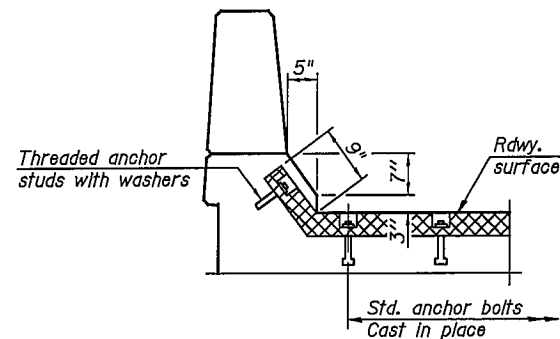
FORMING BLOCKOUT SKETCH

SKREW LIMITATIONS

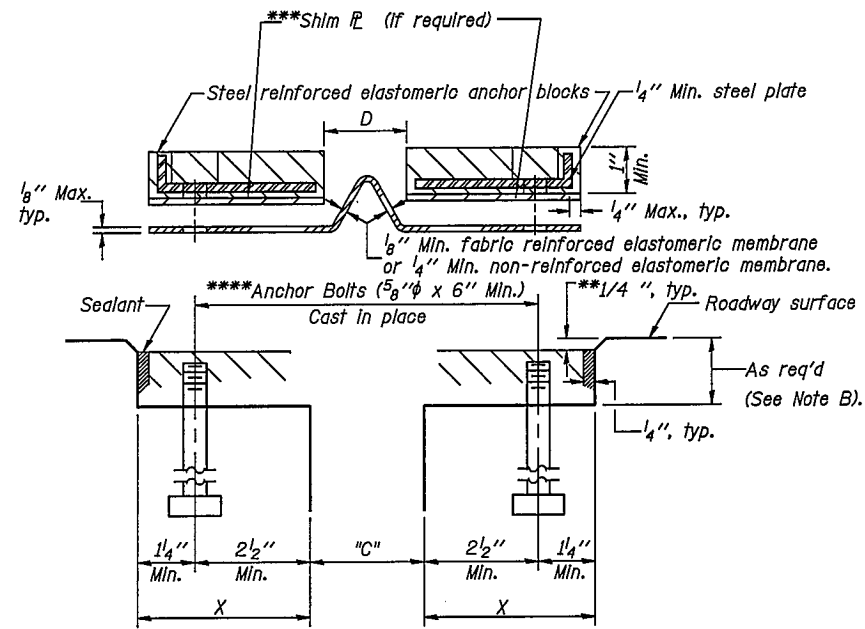
The details of the anchor blocks and the elastomeric membrane in the parapet, as shown, are for up to 50° skews.



AT PARAPET



AT PARAPET TYPICAL END TREATMENT



CROSS SECTION

- ** Use the 1/8" Shim P's to maintain this 1/4" dimension after grinding.
- *** Two 1/8" adjusting shims, of the dimensions of the anchor blocks, shall be provided for each anchor block. If required, the adjusting shims shall be placed as shown (after grinding) to maintain the 1/4" clearance (minimum) between the final roadway surface and the top of the anchor blocks. The shims shall be galvanized according to AASHTO M111 and conform to the requirements of AASHTO M270 Gr. 36. Cost is included with the Neoprene Expansion Joint.
- ****The anchor bolts shall be long enough to allow for one 1/8 inch adjusting shim plate.

GENERAL NOTES

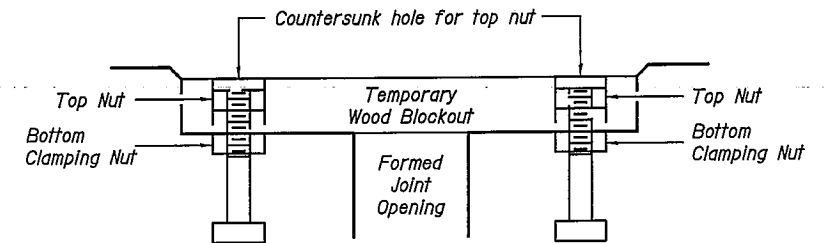
Continuous Seal Neoprene Expansion Joint shall consist of molded anchor blocks of elastomer and steel, field assembled over continuous lengths of elastomeric membrane.

The elastomeric membrane shall be premolded with a single or a double upward convolution that will have a "memory" to return to its molded position upon joint closure.

The convolution length shall be such that the extended length will not be greater than the manufactured length when the joint is fully expanded in its design range and will not protrude above the anchor blocks when the joint is fully compressed.

Joint openings shall be adjusted according to Article 503.10(c) of the Standard Specifications when the deck is poured at an ambient temperature other than 50° F.

The parapet and roadway membrane shall be made continuous by an approved vulcanizing process. Lapping will not be permitted.



Note: Stud needs to be threaded lower to allow for use of clamping nut.

**Anchor studs should be stainless
RECOMMENDED BLOCKOUT DETAIL**

BILL OF MATERIAL

Item	Unit	Total
Neoprene Expansion Joint, 4"	Foot	108

MODIFIED CONTINUOUS SEAL TYPE NEOPRENE EXPANSION JOINTS

U.S. ROUTE 136/IL. ROUTE 1 OVER NORTH FORK VERMILION RIVER
F.A.P. ROUTE 332 SEC. RX-1-BR-1
VERMILION COUNTY
STATION 198+63.75
STRUCTURE NO. 092-0205

CHAMPAIGN, ILLINOIS
CHICAGO, ILLINOIS
EVANSVILLE, INDIANA
INDIANAPOLIS, INDIANA
KENOSHA, WISCONSIN
SPRING GREEN, WISCONSIN

REVISIONS

NAME	DATE

NOTES: DIMENSIONAL DATA IS SET TO BE OBTAINED BY MEASURING AND POSITION OF THIS DRAWING.

DESIGNED BY: JJK
CHECKED BY: MEV
APPROVED BY: JJK
ACTIVITY: DETAILS

PROJECT NO. 182288
DATE: X/85

DRAWING NUMBER: **S-11**