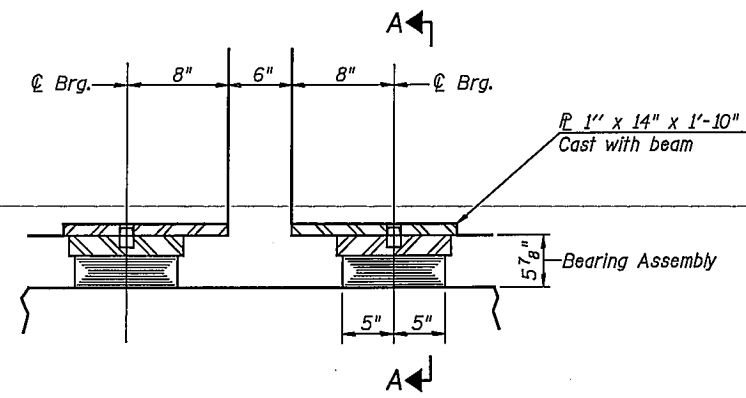
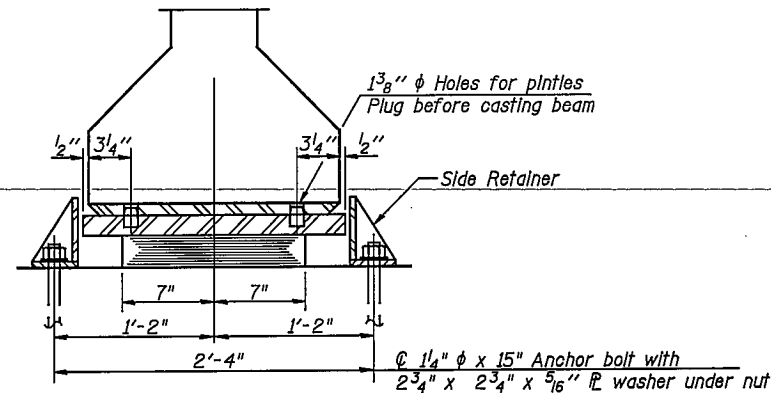


ROUTE NO.	SECTION	QUANTITY	DATE	BY	SHEET NO.
F.A.P. 332	(6)	VERMILION	140	57	- SHEETS
FED. ROAD DIST. NO. 7	ILLINOIS	FED. AID PROJECT			

Contract #90841



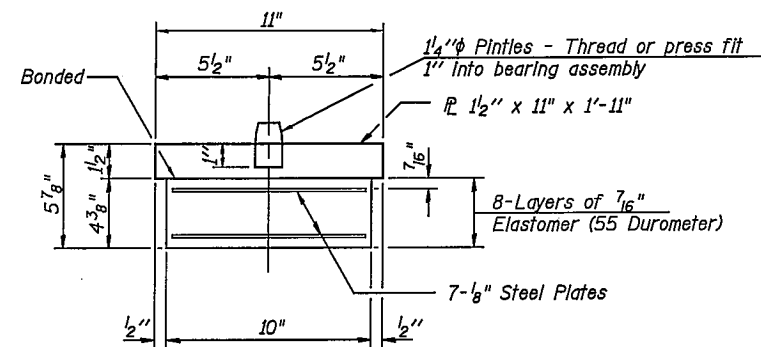
SECTION AT PIER



SECTION A-A

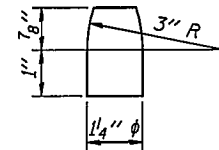
TYPE I ELASTOMERIC EXP. BRG.
PIER 1 - SPANS 1 & 2
PIER 4 - SPANS 4 & 5

Notes:
 After beams have been erected holes at expansion bearings shall be drilled and anchor bolts grouted in place.
 See sheet S-28 for anchor bolt installation.

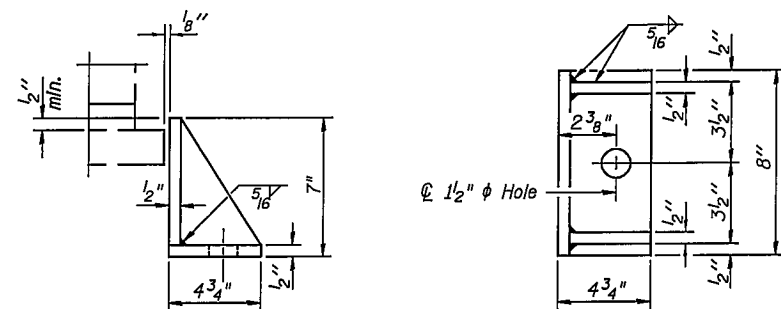


BEARING ASSEMBLY

Note: Shim plates shall not be placed under Bearing Assembly.



PINTLE



SIDE RETAINER

Cost included with Elastomeric Bearing Assembly, Type I
 Equivalent rolled angle with stiffeners will be allowed in lieu of welded plates.
 The side retainers shall be galvanized after shop fabrication according to AASHTO M111 and ASTM 385.

PI-2E-1 7-15-05

BILL OF MATERIAL

Item	Unit	Total
Elastomeric Bearing Assembly, Type I	Each	32

ELASTOMERIC BEARING ASSEMBLY, TYPE I

U.S. ROUTE 136/IL. ROUTE 1 OVER NORTH FORK VERMILION RIVER
 F.A.P. ROUTE 332 SEC. RX-1-BR-1
 VERMILION COUNTY
 STATION 198+63.75
 STRUCTURE NO. 092-0205

CHAMPAIGN, ILLINOIS
 CHICAGO, ILLINOIS
 EVANSVILLE, INDIANA
 INDIANAPOLIS, INDIANA
 KENOSHA, WISCONSIN
 SPRING GREEN, WISCONSIN



REVISIONS	NAME	DATE

S-16