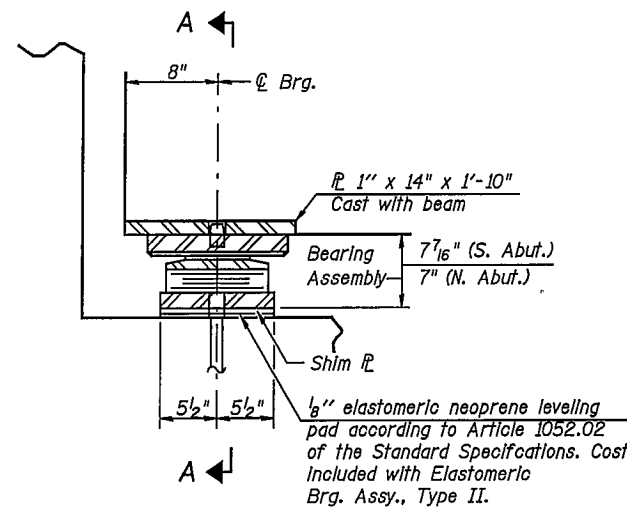
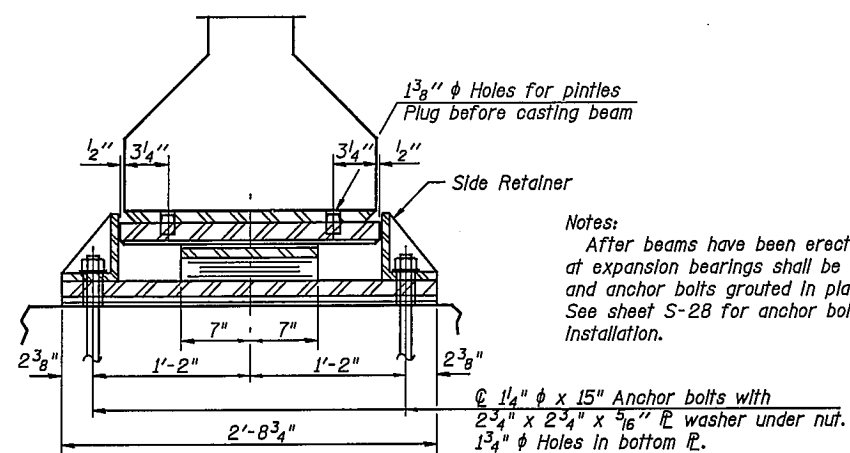


ROUTE NO.	SECTION	COUNTY	DATE	SHEET NO.
F.A.P. 332	(A)	VERMILION	140	58
FED. ROAD DIST. NO. 7		BLANK	FED. AID PROJECT	

Contract #90841



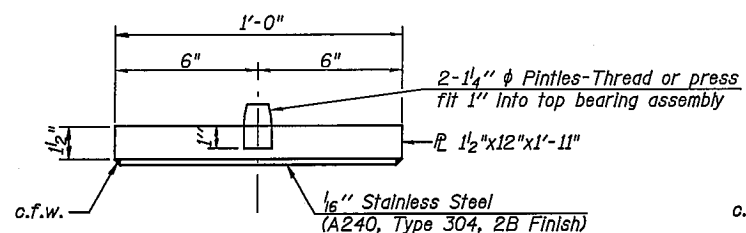
SECTION AT ABUT.



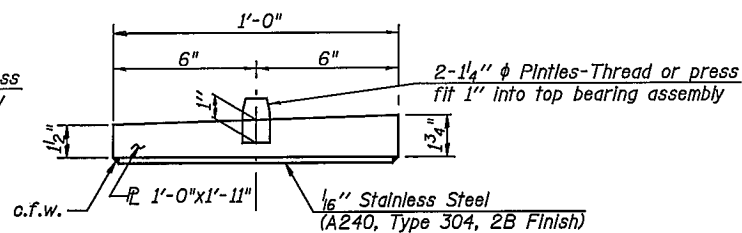
SECTION A-A

Notes:
After beams have been erected at expansion bearings shall be drilled and anchor bolts grouted in place. See sheet S-28 for anchor bolt installation.

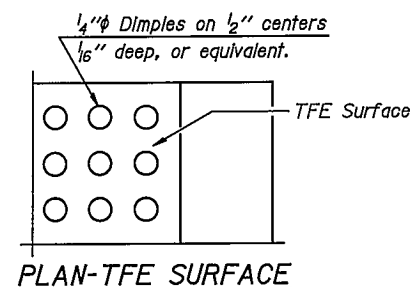
TYPE II TFE ELASTOMERIC EXP. BRG. NORTH & SOUTH ABUTMENT



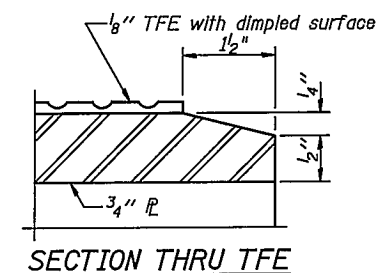
TOP BEARING ASSEMBLY SOUTH ABUTMENT



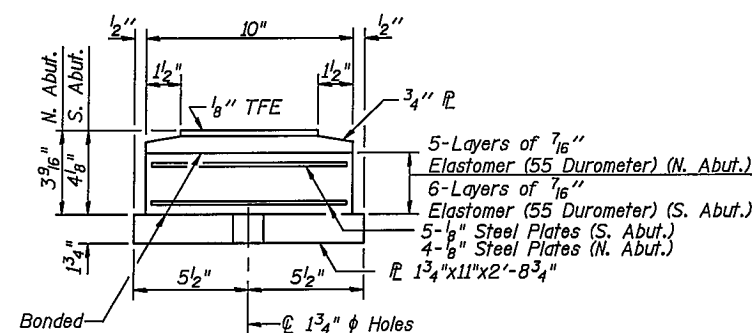
TOP BEARING ASSEMBLY NORTH ABUTMENT



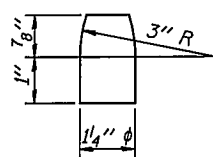
PLAN-TFE SURFACE



SECTION THRU TFE



BOTTOM BEARING ASSEMBLY

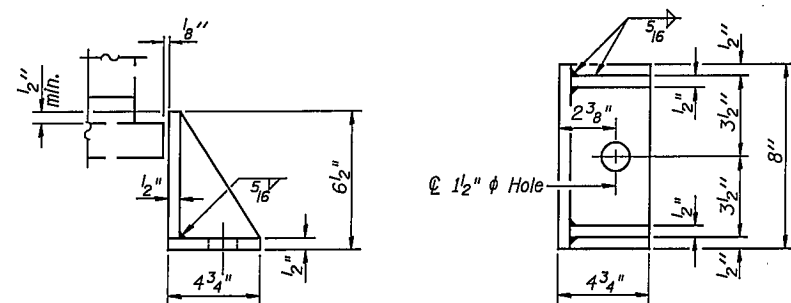


PINTLE

Note:
The 1/8" TFE sheet shall be bonded directly to the top steel plate with a two-component, medium viscosity epoxy resin, conforming to the requirements of the Federal Specification MMM-A-134, Type I. The bond agent shall be applied on the full area of the contact surfaces. Bonding of 1/8" TFE sheet during vulcanizing process will be permitted provided the process and method of adjusting assembly height is approved by the Engineer.

BILL OF MATERIAL

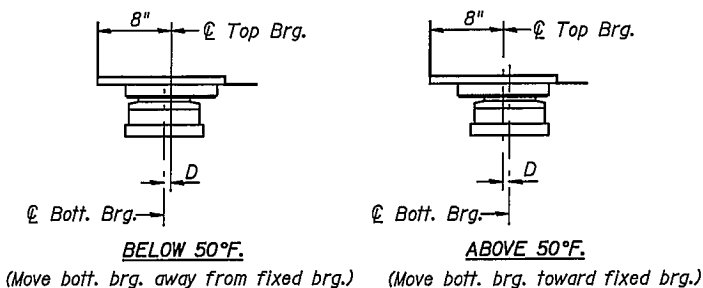
Item	Unit	Total
Elastomeric Bearing Assembly, Type II	Each	16



SIDE RETAINER

Cost included with Elastomeric Bearing Assembly, Type II.
Equivalent rolled angle with stiffeners will be allowed in lieu of welded plates.
The side retainers shall be galvanized after shop fabrication according to AASHTO M11 and ASTM 385.

PI-2E-2 7-15-05

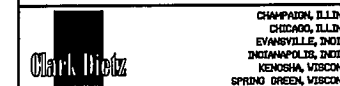


SETTING ANCHOR BOLTS AT EXP. BRG.

D=1/8" per each 100' of expansion for every 15° temp. change from the normal temp. of 50°F.

ELASTOMERIC BEARING ASSEMBLY, TYPE II

U.S. ROUTE 136/IL. ROUTE 1 OVER NORTH FORK VERMILION RIVER
F.A.P. ROUTE 332 SEC. RX-1-BR-1
VERMILION COUNTY
STATION 198+63.75
STRUCTURE NO. 092-0205



REVISIONS		DATE	BY

S-17