

ROUTE NO.	SECTION	QUANTITY	DATE	BY
F.A.P. 332	(*)	VERMILION	1/40/65	
PROJECT NO.	DATE	BY	DATE	BY
CONTRACT #90841				

BILL OF MATERIAL

Bar	No.	Size	Length	Shape
h(E)	60	#5	27'-0"	—
p(E)	14	#7	27'-4"	—
p ₂ (E)	2	#5	39'-8"	—
s ₁₃ (E)	51	#5	12'-5"	□
u ₁ (E)	30	#5	9'-5"	U
u ₃ (E)	6	#5	11'-0"	U
u ₄ (E)	40	#4	7'-4"	U
v ₂ (E)	108	#5	16'-6"	—
v ₄ (E)	42	#8	4'-2"	U

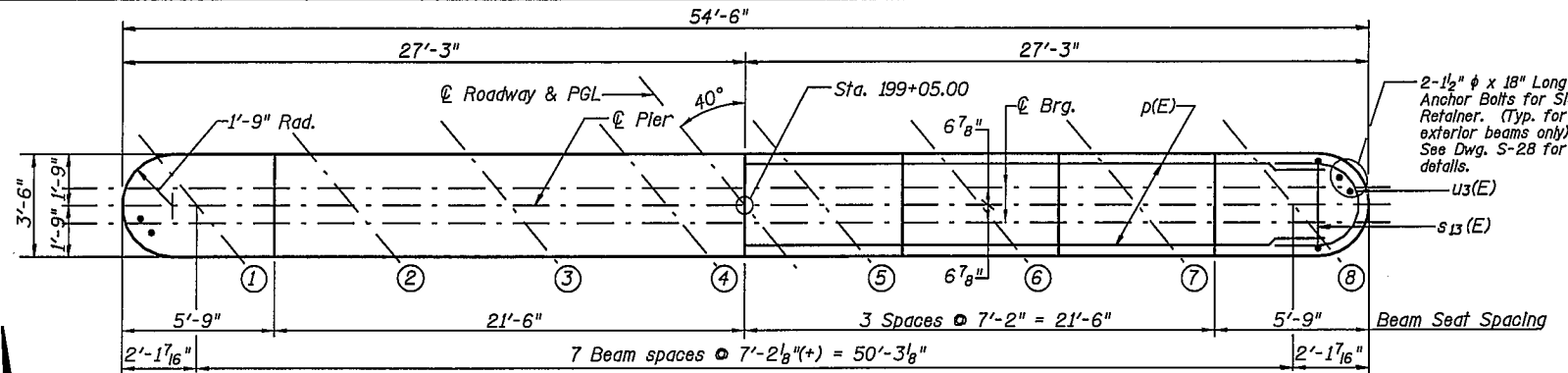
Structure Excavation	Cu. Yd.	14
Concrete Structures	Cu. Yd.	94.3
Reinforcement Bars, Epoxy Coated	Pound	6,100
Furnishing Steel Piles HP12x53	Foot	1,224
Driving Steel Piles	Foot	1,224
Test Pile Steel HP12x53	Each	1
Underwater Structure Excavation Protection-Location 3	Each	1
Metal Shoes	Each	17

Bars indicated thus 5x3-#5 etc. indicates 5 lines of bars with 3 lengths per line. Reinforcement Bars designated (E) shall be epoxy coated.

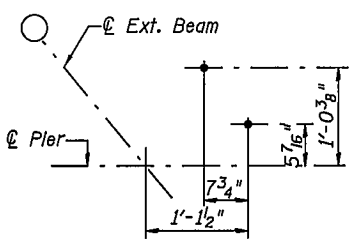
Notes: Space reinforcement in cap to miss anchor bolts.
Pour steps monolithically with cap.

PILE DATA

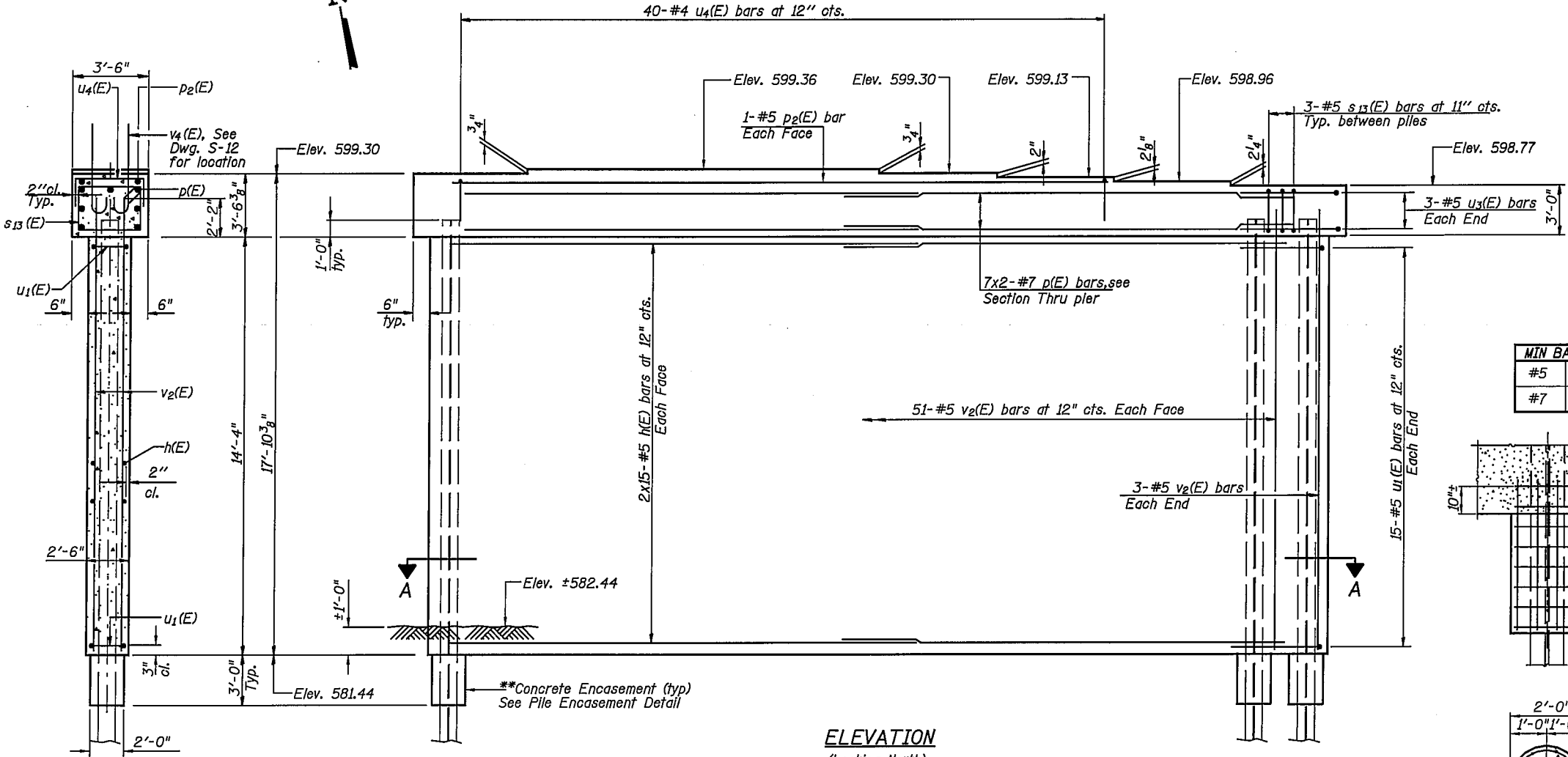
Type: HP12x53 w/ Metal Shoes
Design Capacity: 55T
Required Bearing Capacity: 82.5 Ton
Est. Length: 72'
No. Required: 17 + 1 Test Pile w/ Metal Shoes



TOP PLAN



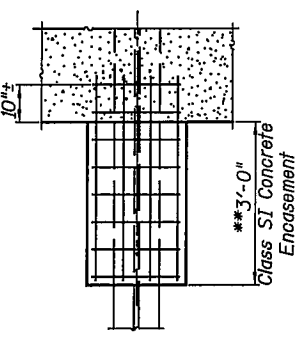
ANCHOR BOLT LAYOUT FOR SIDE RETAINER



ELEVATION (Looking North)

MIN BAR LAP

#5	3'-0"
#7	3'-8"

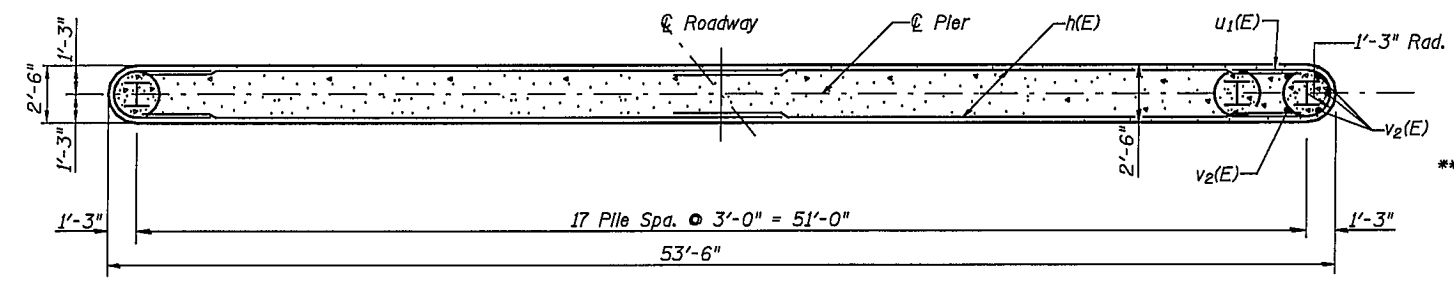


PILE ENCASEMENT DETAIL

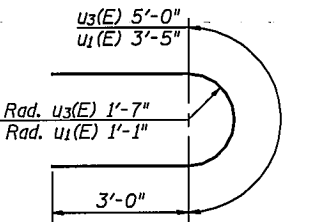
Welded wire fabric 6X6-W4.0xW4.0 weighing 58#/100 sq. ft. The cost of Excavation, Concrete Encasement and Reinforcement is included with furnishing piles. Forms for encasement may be omitted when soil conditions will permit.

**Forms shall be placed below Elevation 581.44 after excavation for Pier walls. Reinforcement and Concrete Encasement shall be poured underwater into forms. The cost of Concrete Encasement, Reinforcement, form excavation, and furnishing and placing forms is included with furnishing piles. If a portion of the pier wall is under water, concrete shall be trimmed under water into forms according to Article 503.08 of the Standard Specifications. Concrete shall be trimmed to an Elevation 1'-0" above the water level at the time of construction.

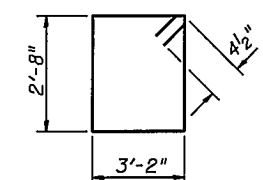
SECTION THRU PIER



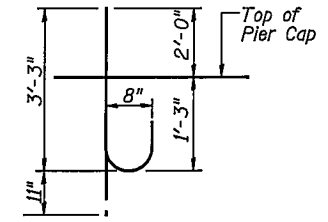
SECTION A-A



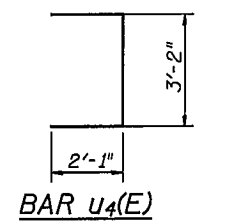
BARS u₁(E) & u₃(E)



BAR s₁₃(E)



BAR v₄(E)



BAR u₄(E)

PIER 3 DETAILS
U.S. ROUTE 136/IL. ROUTE 1 OVER NORTH FORK VERMILION RIVER
F.A.P. ROUTE 332 SEC. RX-1-BR-1 VERMILION COUNTY STATION 198+63.75 STRUCTURE NO. 092-0205

CHAMPAIGN, ILLINOIS	CHICAGO, ILLINOIS	EVANSVILLE, INDIANA	INDIANAPOLIS, INDIANA	KENOSHA, WISCONSIN	SPRING GREEN, WISCONSIN
REVISIONS	DATE	BY	DATE	BY	DATE