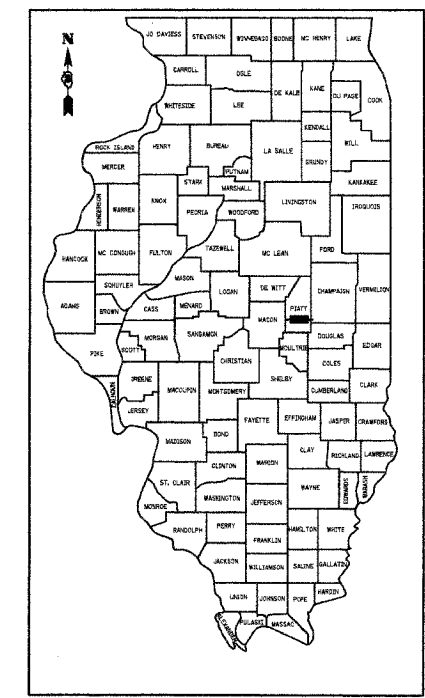


ROUTE NO.	SECTION	COUNTY	TOTAL SHEETS	SHEET NO.
T.R. 167	06-01102-01-BR	PIATT	15	1
ROAD DIST.		ILLINOIS	BEMENT	

CONTRACT NO. 91364

# STATE OF ILLINOIS DEPARTMENT OF TRANSPORTATION DIVISION OF HIGHWAYS PLANS FOR PROPOSED HIGHWAY BRIDGE PROGRAM

**BEMENT ROAD DISTRICT  
SECTION 06-01102-01-BR  
PIATT COUNTY  
PROJECT NO. BROS-147(62)  
TOWNSHIP ROUTE 167  
JOB NO. C-95-312-06**



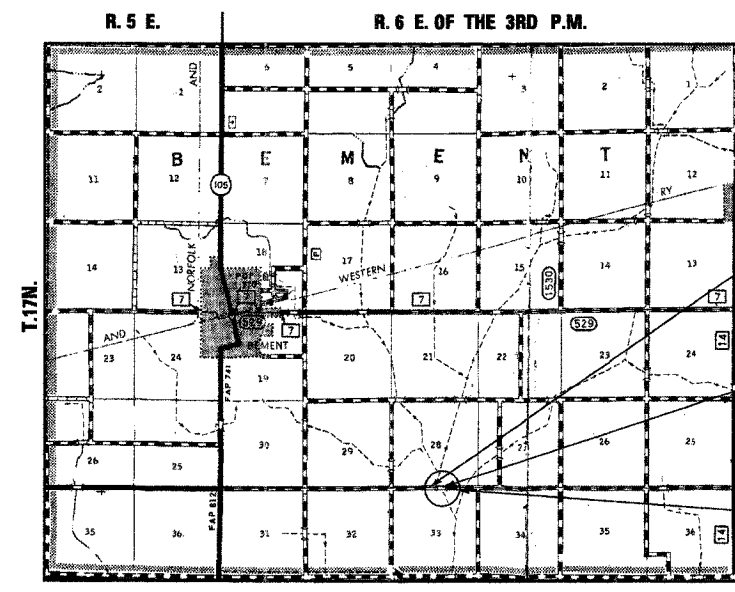
LOCATION OF SECTION INDICATED THUS:   
**CLASSIFICATION: RURAL TWO-LANE LOCAL ROAD**  
**DESIGN VOLUME: UNDER 250 ADT**  
**CURRENT ADT: 150 (2006)**  
**DESIGN SPEED: 30 MPH**  
**3R DESIGN GUIDELINES**

TOLL FREE JOINT UTILITY LOCATING  
INFORMATION FOR EXCAVATORS (J.U.L.I.E.)  
TELEPHONE NUMBER 1-800-892-0123

PASSED	 ROAD DISTRICT COMMISSIONER	2006
APPROVED	 COUNTY ENGINEER	2006
PASSED	 DISTRICT FIVE ENGINEER OF LOCAL ROADS & STREETS	8/21 2006
RELEASED FOR BID BASED ON LIMITED REVIEW	 DEPUTY DIRECTOR OF HIGHWAYS, REGION THREE ENGINEER	AUG 23, 2006
STATE OF ILLINOIS DEPARTMENT OF TRANSPORTATION		

SHEET NO.	TITLE
1.	COVER SHEET
2.	SUMMARY OF QUANTITIES, GENERAL NOTES & TYPICAL SECTIONS
3.	PLAN AND PROFILE SHEET
4.-11.	BRIDGE PLANS
12.-15.	STATION CROSS SECTIONS

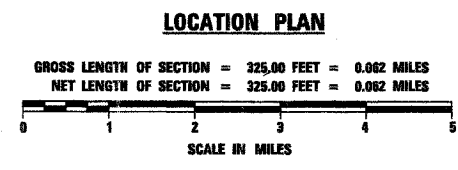
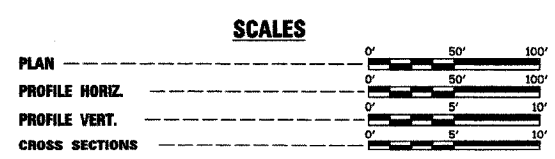
- STANDARDS:**
- 280001-02 TEMPORARY EROSION CONTROL
  - 285001-01 FABRIC FORMED CONCRETE REVETMENT MAT
  - 515001-02 NAME PLATE FOR BRIDGES
  - 631026-02 TRAFFIC BARRIER TERMINAL TYPE 5 & 5A
  - 635006-02 REFLECTOR AND TERMINAL MARKER PLACEMENT
  - 702001-06 TRAFFIC CONTROL DEVICES
  - BLR 21-6 TYPICAL APPLICATION OF TRAFFIC CONTROL DEVICES FOR CONSTRUCTION ON RURAL LOCAL HIGHWAYS



**IMPROVEMENT BEGINS  
STA. 3+50**

**STA. 5+06.55 - SPECIAL BRIDGE DESIGN  
PRECAST PRESTRESSED CONCRETE DECK BEAM  
BRIDGE, THREE SPANS @ 35'-3 1/4", 45'-3",  
35'-3 1/4"; 27'-0" ROADWAY, SKEW = 26°  
EXISTING S.N. 074-3109  
PROPOSED S.N. 074-3306**

**IMPROVEMENT ENDS  
STA. 6+75**



*Fred J. Stone Jr. (S-30-06)*  
ILLINOIS PROFESSIONAL NO. 26065  
EXPIRES 11-30-07

4440 ASH GROVE  
SPRINGFIELD, IL 62711  
(217) 793-8600  
oasinc@insightbb.com

**FEHR-GRAHAM & ASSOCIATES, LLC**  
ENGINEERING AND SCIENCE CONSULTANTS  
P.O. BOX 10000, SPRINGFIELD, IL 62709