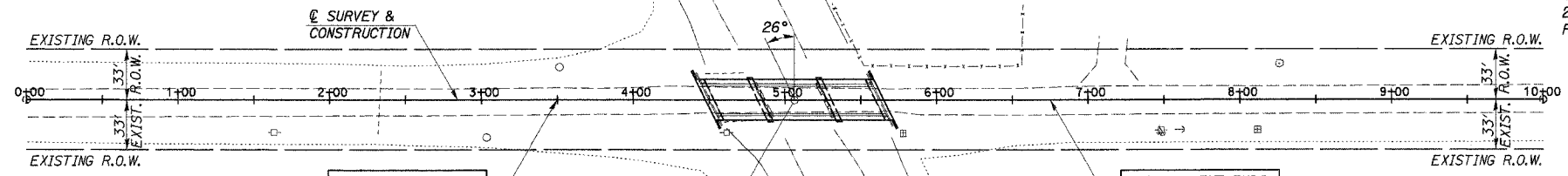
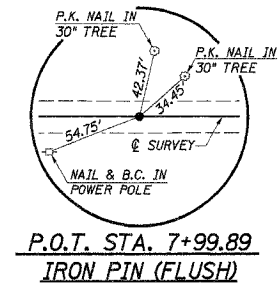
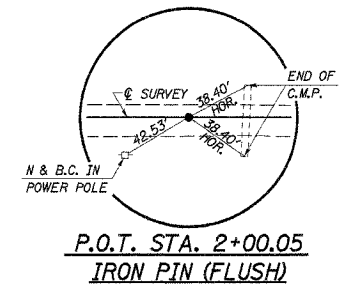


SE 1/4, SECTION 28, T17N, R6E, 3RD P.M.

ROUTE	SECTION	COUNTY	TOTAL SHEETS	SHEET NO.
T.R. 167	06-0102 -01-BR	PIATT	15	3
STA. 0+00	TO STA. 10+00			
ILLINOIS		BEMENT		
CONTRACT NO. 91364				



EXISTING STRUCTURE NO. 074-3109
 3-SPAN CONTINUOUS WIDE FLANGE BEAM BRIDGE WITH CONCRETE SLAB ON CONCRETE PILE BENT PIERS AND CONCRETE PILE BENT SPILL-THRU ABUTMENTS; 113'-4" BK.-BK. ABUTMENTS. 3-SPANS @ 34'-8", 40'-8", 34'-8" C.-C. BRGS., 18'-0" ROADWAY, 21'-0" O.-O. DECK, 26° SKEW
 REMOVAL OF EXISTING STRUCTURES = 1 EACH

OVERHEAD POWER
 EASTERN ILLINI ELECTRIC
 ALAN SCHWEIGHART
 217-379-2131 EXT. 173

BURIED CABLE
 VERIZON NORTH, INC.
 JONNA FRICKE
 309-663-3422

CHANNEL EXCAVATION

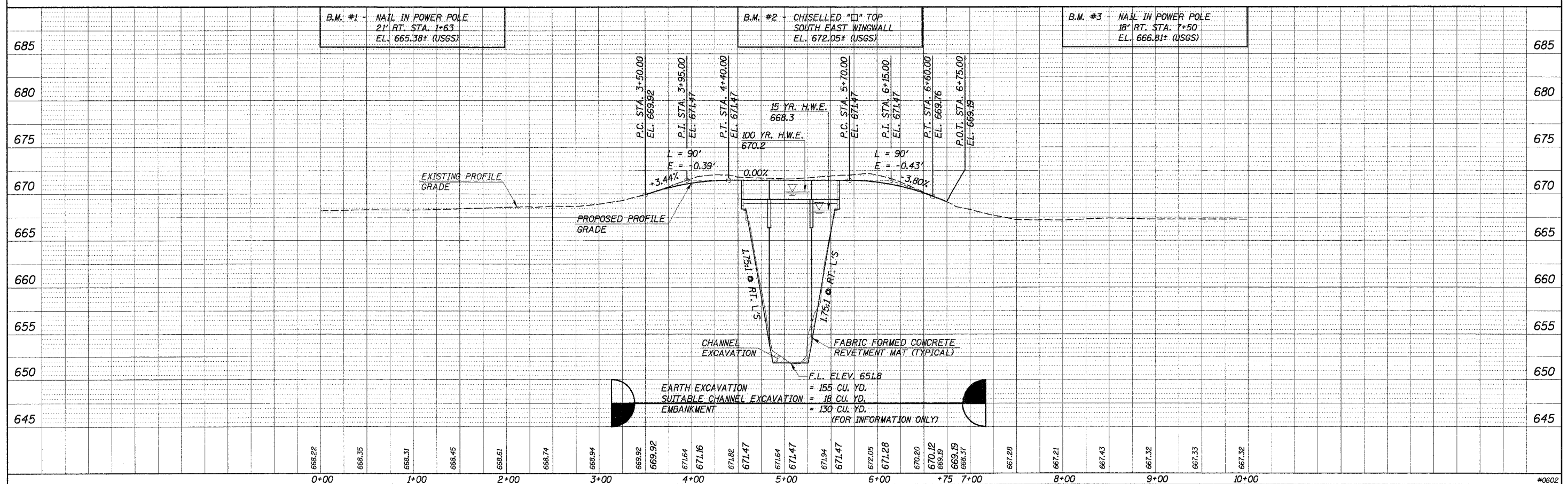
THE CHANNEL SHALL BE EXCAVATED AS SHOWN WITHIN THE LIMITS OF THE PROPOSED STRUCTURE THEN TAPER TO THE EXISTING CHANNEL AT THE R.O.W. LINES. SUITABLE EXCAVATED MATERIAL TO BE USED IN THE EMBANKMENT AS DIRECTED BY THE ENGINEER.

CHANNEL EXCAVATION = 40 CU. YD.

STA. 5+06.55 - SPECIAL BRIDGE DESIGN
 PRECAST PRESTRESSED CONCRETE DECK BEAM BRIDGE; THREE SPANS @ 35'-3 1/4", 45'-3", 35'-3 1/4"; 27'-0" ROADWAY; SKEW = 26°
 PROPOSED S.N. 074-3306

JOHN R. FUNK

NE 1/4, SECTION 33, T17N, R6E, 3RD P.M.



F.L. ELEV. 651.8
 = 155 CU. YD.
 SUITABLE CHANNEL EXCAVATION = 18 CU. YD.
 EMBANKMENT = 130 CU. YD.
 (FOR INFORMATION ONLY)

DATE	1/23/06
BY	SKP
SCALE	
REVISION	
NO.	
DATE	
BY	
SCALE	
REVISION	
NO.	
DATE	
BY	
SCALE	
REVISION	
NO.	