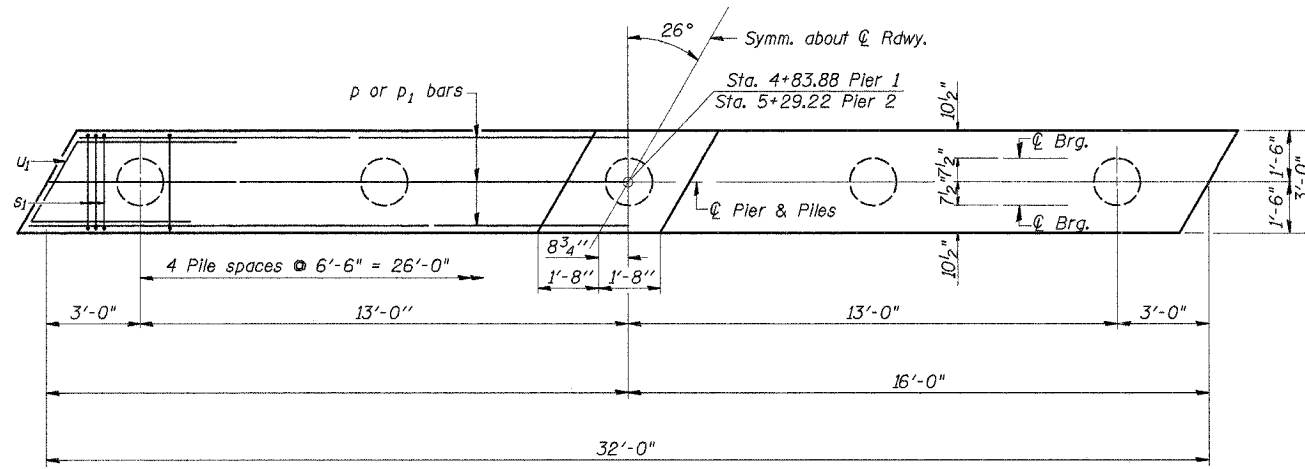


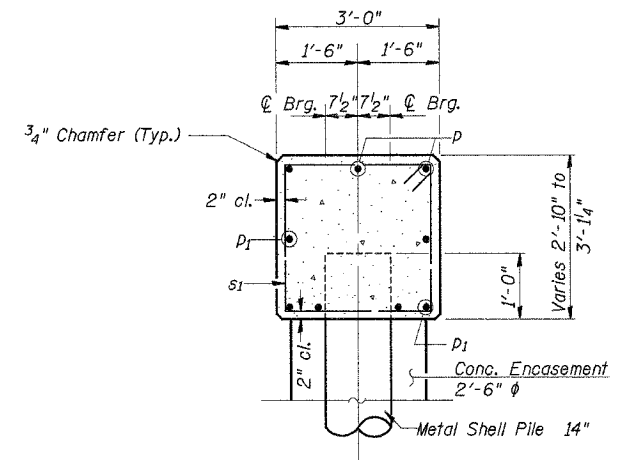
ROUTE NO.	SECTION	COUNTY	TOTAL SHEETS	SHEET NO.
T.R. 167	06-01102-01-BR	PIATT	15	10
ROAD DIST.	ILLINOIS		BEMENT	

CONTRACT NO. 91364

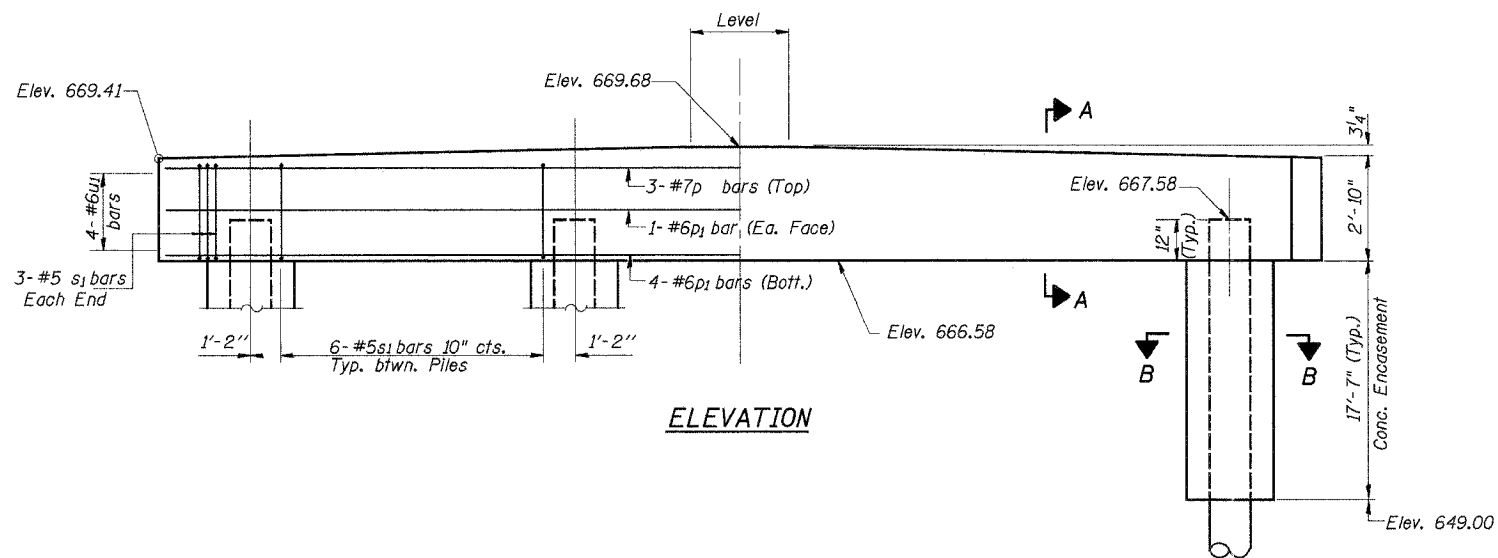
Note: All edges shall have standard $\frac{3}{4}$ " chamfer



PLAN



SECTION A-A



ELEVATION

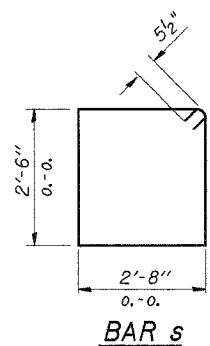
BILL OF MATERIAL - 2 PIERS

BAR	NO.	SIZE	LENGTH	SHAPE
p	6	#7	31'-8"	—
p1	12	#6	31'-8"	—
s1	60	#5	11'-3"	□
u1	16	#6	12'-10"	▭
Concrete Structures			Cu. Yd.	20.8
Reinforcement Bars			Pound	1,970
Metal Shell Piles 14"			Foot	405
Test Pile Metal Shells			Each	1
Conc. Encasement			Cu. Yd.	25.0

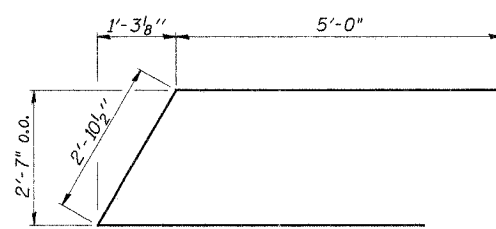
See Sheet 11 For Pile Details

PILE DATA

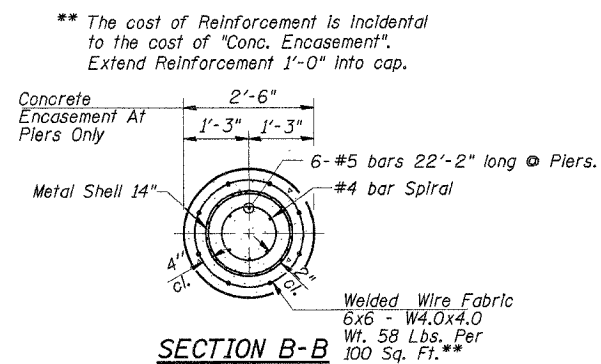
Type _____ 14" Metal Shell Piles
Capacity _____ 58 Tons
Est. Length _____ 45 Feet/Pile
No. Req'd(2 Piers) _____ *10
*Includes one Test Pile to be driven in a permanent location at Pier 2.



BAR s



BAR u



SECTION B-B
PILE ENCASMENT DETAIL

** The cost of Reinforcement is incidental to the cost of "Conc. Encasement". Extend Reinforcement 1'-0" into cap.

DESIGNED	F.J.S.
CHECKED	S.F.M.
DRAWN	S.A.P.
CHECKED	S.F.M.

PIERS

SECTION 06-01102-01-BR
BEMENT ROAD DISTRICT
PIATT COUNTY
STATION 5+06.55

4440 ASH GROVE SPRINGFIELD, IL 62711 (217) 793-8600 oasinc@insightbb.com	<p>FEHR-GRAHAM & ASSOCIATES, LLC ENGINEERING AND SCIENCE CONSULTANTS PROFESSOR OF ENGINEERING, UNIVERSITY OF ILLINOIS</p>	JOB NO.: 0602 FILE: 0602PIER.DGN DATE: 05/26/06
---	---	---