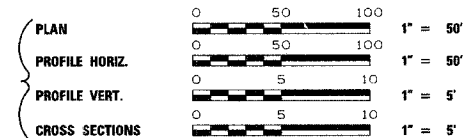


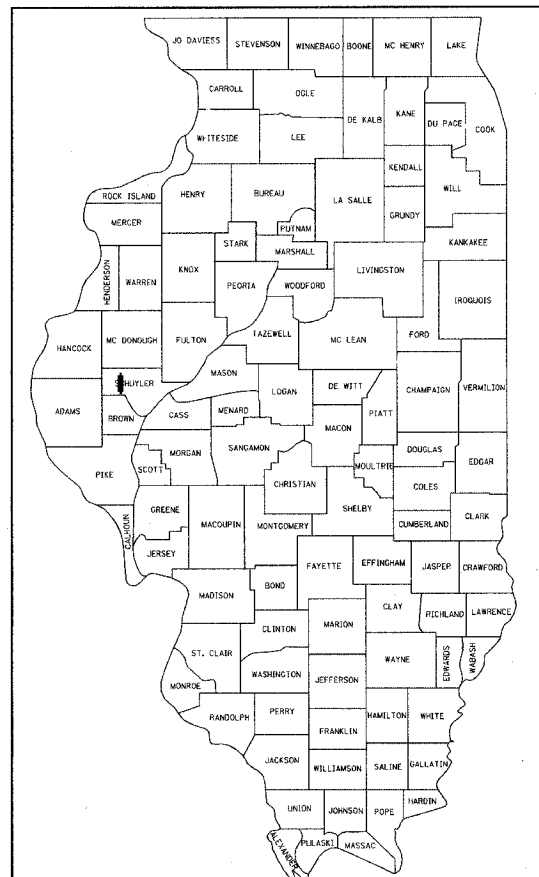
F.A. RTE.	SECTION	COUNTY	TOTAL SHEETS	SHEET NO.
TR110	80-03108-00-BR	SCHUYLER	20	1
FED. ROAD DIST. NO.		ILLINOIS	FED. AID PROJECT	
• BROS-169(35)				

STATE OF ILLINOIS
DEPARTMENT OF TRANSPORTATION
DIVISION OF HIGHWAYS
PLANS FOR

**PROPOSED LOCAL AGENCY IMPROVEMENTS
BRIDGE REPLACEMENT & REHABILITATION PROGRAM**



**T.R. ROUTE 110
SECTION 80-03108-00-BR
SCHUYLER COUNTY
BROOKLYN TOWNSHIP
PROJECT BROS-169(35)
JOB NUMBER C-96-222-06**



LOCATION OF SECTION INDICATED THIS: —

INDEX OF SHEETS

SHEET NO.	DESCRIPTION
1	COVER SHEET
2	SUMMARY OF QUANTITIES, DETAILS & TYPICAL SECTIONS
3	SCHEDULE OF QUANTITIES
4	PLAN AND PROFILE
5	EROSION CONTROL PLAN
6	RIGHT OF WAY PLAN
7 THRU 11	BRIDGE PLANS
12 THRU 20	CROSS SECTIONS

STANDARDS

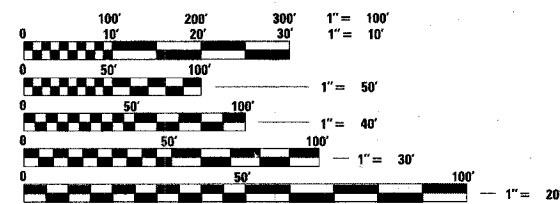
000001-04	STANDARD SYMBOLS, ABBREVIATIONS, AND PATTERNS
280001-02	TEMPORARY EROSION CONTROL SYSTEMS
515001-02	NAME PLATE FOR BRIDGES
542401	METAL END SECTION FOR PIPE CULVERTS
630001-06	STEEL PLATE BEAM GUARDRAIL
630301-03	SHOULDER WIDENING FOR TYPE 1 (SPECIAL) GUARDRAIL TERMINALS
631026-C2	TRAFFIC BARRIER TERMINAL TYPE 5 & 5A
635006-02	REFLECTOR AND TERMINAL MARKER PLACEMENT
702001-06	TRAFFIC CONTROL DEVICES
B.L.R. 21-6	TYPICAL APPLICATION OF TRAFFIC CONTROL DEVICES FOR CONSTRUCTION ON RURAL LOCAL HIGHWAYS

GENERAL NOTES

- WHEN SECTION OR SUB-SECTION MONUMENTS ARE ENCOUNTERED, THE ENGINEER SHALL BE NOTIFIED BEFORE SUCH MONUMENTS ARE REMOVED. THE CONTRACTOR SHALL PROTECT AND CAREFULLY PRESERVE ALL PROPERTY MARKS AND MONUMENTS UNTIL THE OWNER OR AN AUTHORIZED SURVEYOR OR AGENT HAS WITNESSED OR OTHERWISE REFERENCED THEIR LOCATION.
- SEE SPECIAL PROVISIONS FOR SEEDING RATES.

UTILITIES

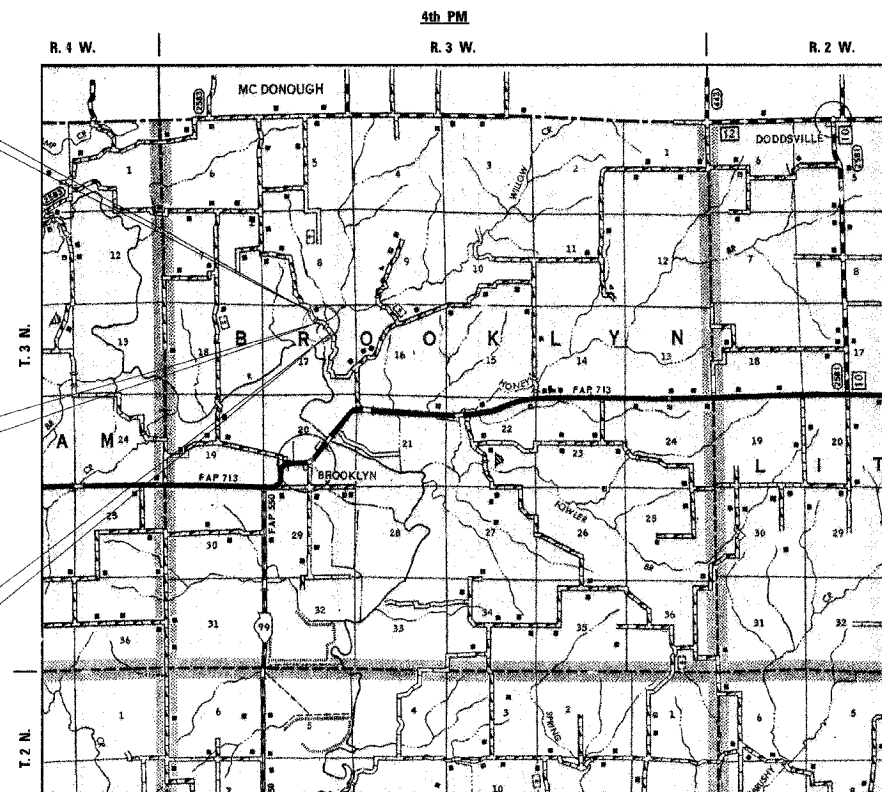
(NONE PRESENT)



EXISTING STRUCTURE
SN: 085-4303
SINGLE SPAN TIMBER PLANKS ON STEEL STRINGERS WITH CLOSED REINFORCED CONCRETE ABUTMENTS. (30'-0" LENGTH x 14'-0" WIDE) TO BE REMOVED

PROPOSED STRUCTURE
SN: 085-4307
SINGLE SPAN PRECAST PRESTRESSED CONCRETE DECK BEAM (33" DEPTH) WITH REINFORCED CONCRETE SPILL THRU ABUTMENTS. (78'-10 1/4" LENGTH x 24'-0" WIDE)

STA. 11+80.00
END IMPROVEMENTS
SECTION 80-03108-00-BR



LOCATION MAP

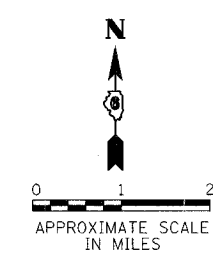
NET LENGTH OF PROJECT = 866.26 FEET = 0.164 MILES

DESIGN DESIGNATION

LOCAL ROAD: ADT < 150
DESIGN SPEED: 30 MPH

"PRINTED BY THE AUTHORITY OF THE STATE OF ILLINOIS"

McDONOUGH CO.
SCHUYLER CO.



SIGNATURE: *William C. Bort*

EXPIRES: 11/30/07

APPROVED	6-9	2006
	<i>David L. Schneider</i>	COUNTY ENGINEER
APPROVED	6-9	2006
	<i>James H. Hoffman</i>	ROAD COMMISSIONER
PASSED	8-21	20 06
	<i>John F. ...</i>	DISTRICT SIX ENGINEER OF LOCAL ROADS & STREETS
PASSED	8-22	20 06
	<i>Ph. ...</i>	DISTRICT SEVEN ENGINEER OF CONSTRUCTION
Releasing For Bid Based on Limited Review	8-21	20 06
	<i>Christine M. Reed</i>	DEPUTY DIRECTOR OF HIGHWAYS, REGION FOUR ENGINEER
STATE OF ILLINOIS DEPARTMENT OF TRANSPORTATION		

PRINTED BY THE AUTHORITY OF THE STATE OF ILLINOIS

PLANS PREPARED BY:

REVISION	DATE	BY	COMPUTER FILE NO.
			0234ICOVER
			PROJECT: 02341
			03/03/06 - HEB

GREENE & BRADFORD, INC.
OF SPRINGFIELD
CONSULTING ENGINEERS
200 CONVENT ROAD
SPRINGFIELD, ILLINOIS 62761
PHONE: 217-223-1100 FAX: 217-223-1101
WWW.GREENE-AND-BRADFORD.COM

DESIGN	INT.	DATE	REASON

PLOTS & CHECKS	INT.	DATE	NO.	REASON

FILE NAME = J:\0234\DRAWINGS\0234ICOVER.dgn
PLOT SCALE = 1:50
PLOT DATE = 03/03/06
PLOT TIME = 2:16:20 PM
OPERATOR = daveh

CHECKS	INT.	DATE	REASON

CONTRACT NO. 93424