

RIGHT OF WAY PLAT

NE 1/4, SECTION 17, T. 3 N., R. 3 W., 4th P.M.

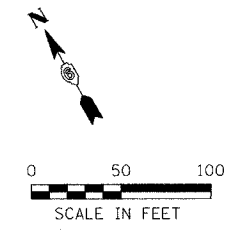
F.A. RTE.	SECTION	COUNTY	TOTAL SHEETS	SHEET NO.
TR 110	80-03108-00-BR	SCHUYLER	20	6
STA.	3+13.74	TO STA.	12+00	
FED. ROAD DIST. NO.	ILLINOIS FED. AID PROJECT		*	

* BROS-169(35)

MICHAEL J. AND BRED A. WISNIEWSKI
AND JEANETTE A. WISNIEWSKI

NET R.O.W. AREA: 1.859 AC (80,971 SQ. FT.)
 AREA IN TEMP. CONST. EASEMENT E-1: 0.088 AC (3812 SQ. FT.)
 AREA IN TEMP. CONST. EASEMENT E-2: 0.105 AC (4574 SQ. FT.)
 AREA IN TEMP. CONST. EASEMENT E-3: 0.502 AC (21,885 SQ. FT.)

IRON PIPE FOUND
NE COR. W 1/2 NE 1/4
SEC 17, T3N, R3W, 4TH P.M.



CURVE DATA C-1
 PI STA. = 4+48.74
 $\Delta = 30^\circ 17' 41.6''$ (LT)
 D = 44' 18" 56.2"
 R = 129.29'
 T = 35.00'
 L = 68.36'
 E = 4.65'
 P.C. STA. = 4+13.74
 P.T. STA. = 4+82.10

CURVE DATA C-2
 PI STA. = 5+80.94
 $\Delta = 35^\circ 59' 59.4''$ (RT)
 D = 23' 00" 01"
 R = 249.11'
 T = 80.94'
 L = 156.52'
 E = 12.82'
 P.C. STA. = 5+00.00
 P.T. STA. = 6+56.52

CURVE DATA E-4
 $\Delta = 22^\circ 11' 59''$
 R = 294.11'
 T = 57.70'
 L = 113.96'
 CH = 113.24'
 CH BEARING = N 70°22'32" W

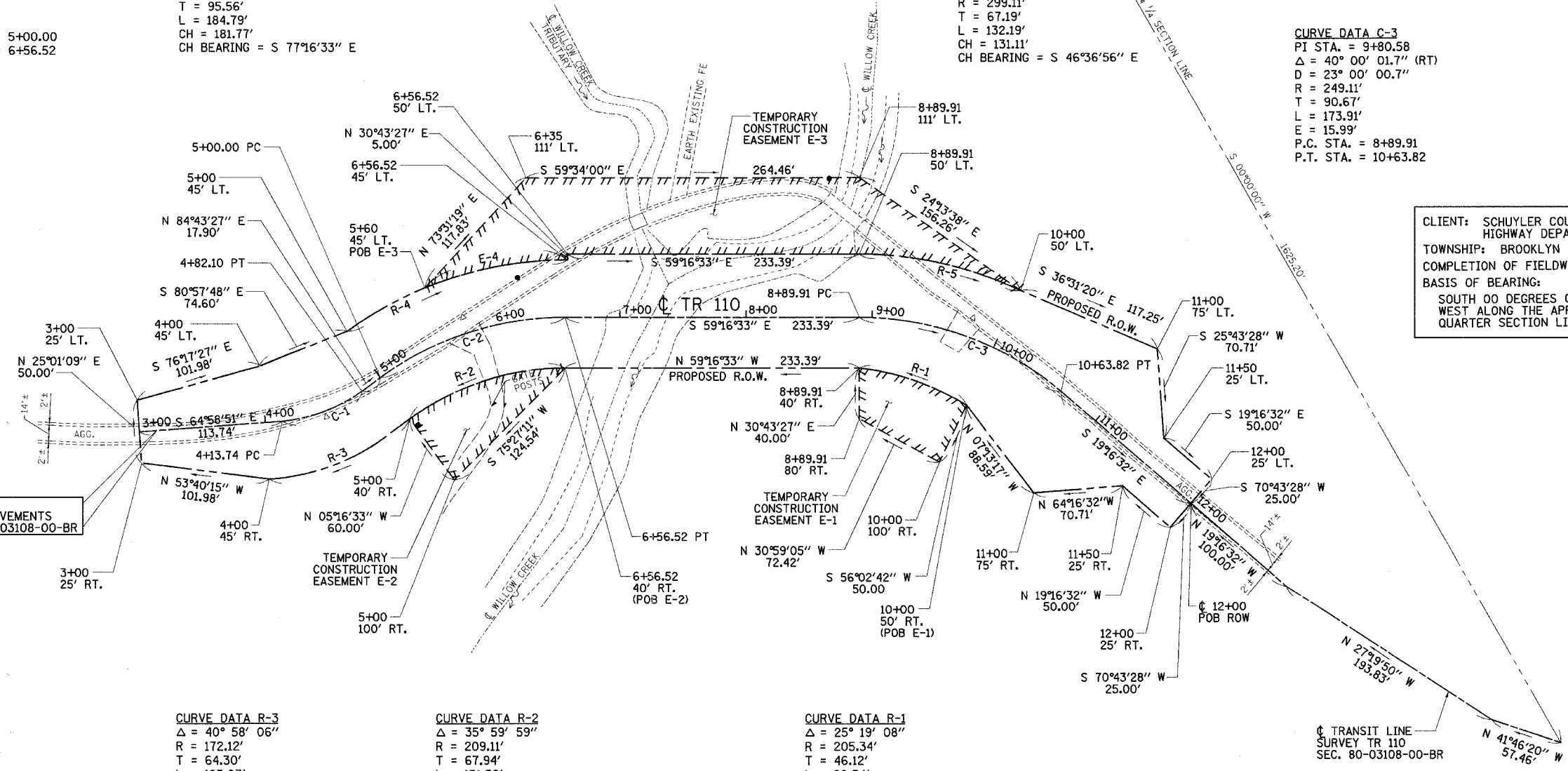
CURVE DATA R-4
 $\Delta = 35^\circ 59' 59''$
 R = 294.11'
 T = 95.56'
 L = 184.79'
 CH = 181.77'
 CH BEARING = S 77°16'33" E

CURVE DATA R-5
 $\Delta = 25^\circ 19' 15''$
 R = 299.11'
 T = 67.19'
 L = 132.19'
 CH = 131.11'
 CH BEARING = S 46°36'56" E

CURVE DATA C-3
 PI STA. = 9+80.58
 $\Delta = 40^\circ 00' 01.7''$ (RT)
 D = 23' 00" 00.7"
 R = 249.11'
 T = 90.67'
 L = 173.91'
 E = 15.99'
 P.C. STA. = 8+89.91
 P.T. STA. = 10+63.82

CLIENT: SCHUYLER COUNTY
HIGHWAY DEPARTMENT
 TOWNSHIP: BROOKLYN
 COMPLETION OF FIELDWORK: 3/1/2004
 BASIS OF BEARING:
 SOUTH 00 DEGREES 00 MINUTES 00 SECONDS
 WEST ALONG THE APPARENT QUARTER,
 QUARTER SECTION LINE.

STA. 3+13.74
BEGIN IMPROVEMENTS
SECTION 80-03108-00-BR



CURVE DATA R-3
 $\Delta = 40^\circ 58' 06''$
 R = 172.12'
 T = 64.30'
 L = 123.07'
 CH = 120.46'
 CH BEARING = N 82°56'31" W

CURVE DATA R-2
 $\Delta = 35^\circ 59' 59''$
 R = 209.11'
 T = 67.94'
 L = 131.39'
 CH = 129.24'
 CH BEARING = N 77°16'33" W

CURVE DATA R-1
 $\Delta = 25^\circ 19' 08''$
 R = 205.34'
 T = 46.12'
 L = 90.74'
 CH = 90.00'
 CH BEARING = N 40°23'31" W

LEGEND

	CENTERLINE
	EXISTING R.O.W. LINE
	PROPOSED R.O.W. LINE
	SECTION LINE

** FOR INFORMATION ONLY

REVISIONS	
DATE	DESCRIPTION

ILLINOIS DEPT. OF TRANSPORTATION
RIGHT OF WAY PLANS

ROUTE TOWNSHIP ROAD 110
 SECTION 80-03108-00-BR
 COUNTY SCHUYLER
 JOB# PROJECT#
 SEC 17 T 3 N, R 3 W OF 4th P.M.
 STA 3+13.74 TO STA 12+00
 DRAWN MABUS CHECKED KUNTZMAN/COLEBROOK
 SCALE: 1" = 50' SHEET NO. 1 OF 2

GREENE & BRADFORD, INC.
OF SPRINGFIELD
REGISTERED PROFESSIONAL ENGINEERS
ILLINOIS LICENSE NO. 021-0078
PROFESSIONAL DESIGN FIRM NO. 021-0078
PROFESSIONAL SURVEYING CORPORATION
021-195-8844, 021-735-2027, 91 E. MAIN - COOK COUNTY, ILLINOIS

COMPUTER FILE NO. 2341F10-50
PROJECT 02341
1/11/06-MML

APPROVED BY _____ DISTRICT ENGINEER
DATE _____

DRAWN BY _____
 WRITTEN BY _____
 CHECKED BY _____
 INSPECTED BY _____