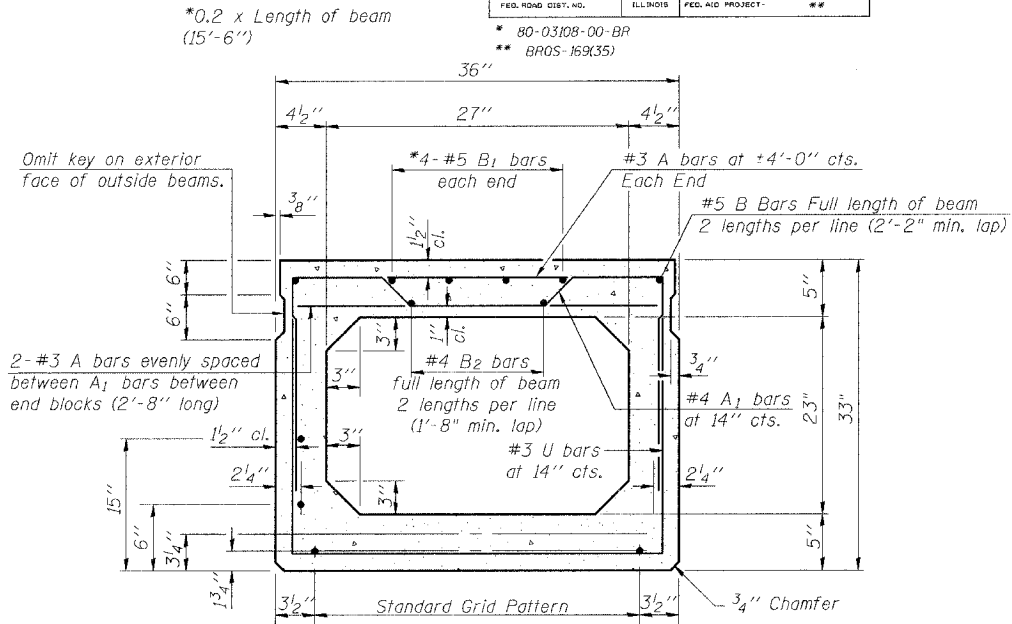
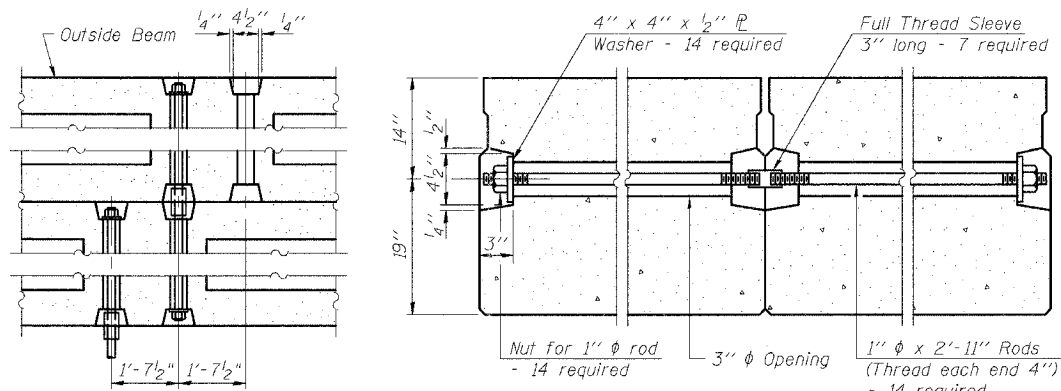
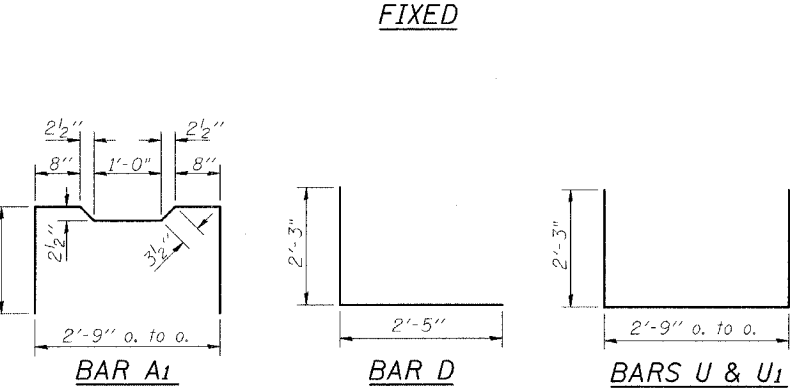
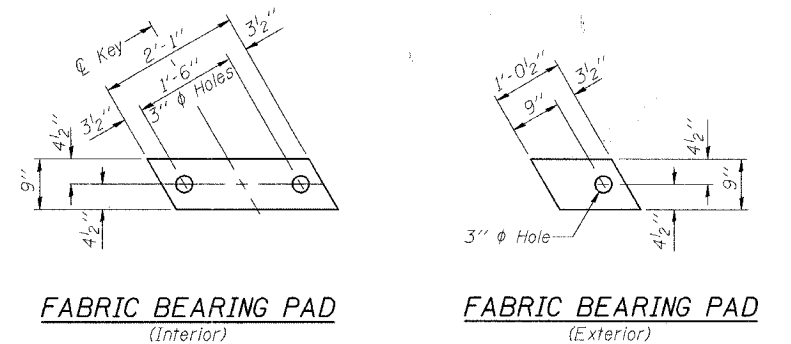


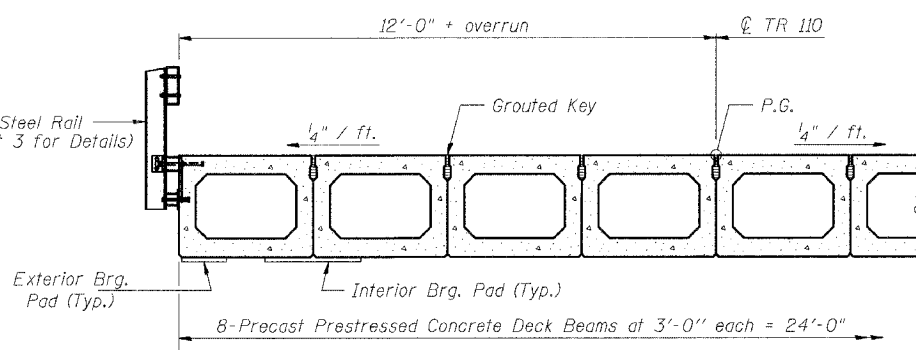
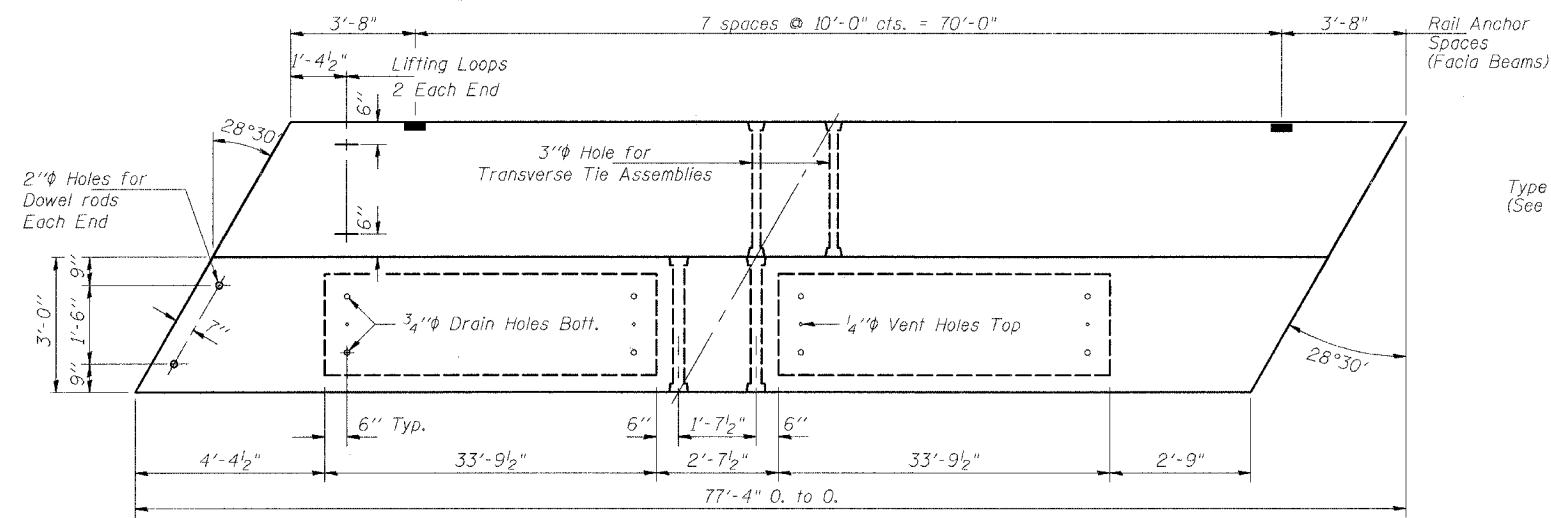
STATE OF ILLINOIS
DEPARTMENT OF TRANSPORTATION

ROUTE NO.	SECTION	COUNTY	SHEETS	SHEET NO.
TR 110		SCHUYLER	20	8
FED. ROAD DIST. NO.	ILLINOIS	FED. AID PROJECT	##	
		80-03108-00-BP		
		BR05-169(35)		

SHEET NO. 2
5 SHEETS



*0.2 x Length of beam (15'-6")
18 - 1/2" Strands, Each Strand Stressed to 30,900 Lbs.
10-Strands 1 3/4" up, 6-Strands 3/4" up, 2-Strands 15" up
Note: Place strands symmetrically about center of beam.



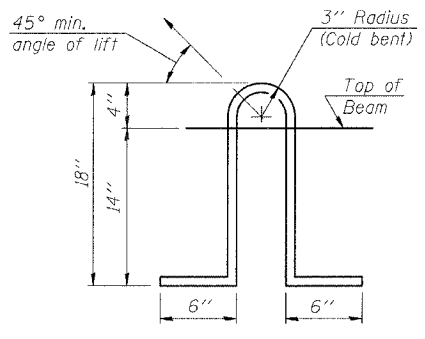
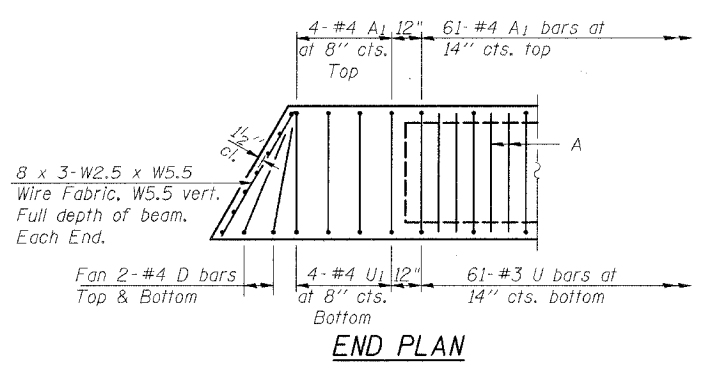
***BILL OF MATERIAL**

Bar	No.	Size	Length	Shape
A	130	#3	2'-8"	—
A1	69	#4	6'-1"	⌊
B	4	#5	39'-6"	—
B1	8	#5	15'-6"	—
B2	4	#4	39'-4"	—
D	8	#4	4'-8"	L
U	61	#3	7'-3"	⌊
U1	8	#4	7'-3"	⌊
Precast Prestressed Conc. Deck Bms.				Sq. Ft. 1856

* Bar quantity is for 1 beam and is for information only

NOTES

Prestressing steel shall be uncoated high strength, low relaxation 7-wire strand, Grade 270. The nominal diameter shall be 1/2" and the nominal cross-sectional area shall be 0.153 sq. in. Lifting loops shall be 3-1/2" phi-270 ksi strands, as shown. The 1" rods in the transverse tie assembly shall be tightened to a snug fit and the threads set. Pockets that receive transverse tie bar on outside shall be filled with grout after transverse tie assembly is in place. Non prestressing steel shall conform to AASHTO M-31, M-42 or M-53 Grade 60. The bearing seat surfaces shall be adjusted by shimming to assure firm and even bearing. Two 1/8" fabric adjusting shims of the dimensions of the Exterior Bearing Pad shall be provided for each bearing. Keyway surfaces shall be cleaned to remove form oil or other bond breaking material prior to shipment of the beams. Cleaning shall be done by sandblasting the keyway areas between top of the beam and the bottom edge of the key. Corrosion Inhibitor, as covered in the Special Provisions, shall be used in the concrete for precast prestressed concrete deck beams. Required Release Strength, f'ci, shall be 4000 p.s.i.



REVISIONS	
NAME	DATE

ILLINOIS DEPARTMENT OF TRANSPORTATION
SUPERSTRUCTURE DETAILS
TR 110 OVER WILLOW CREEK
STA. 7+26.00
SCHUYLER COUNTY
S.N. 085-4307

SCALE: VERT. DATE: 9/8/04
DRAWN BY: LANDREY
DESIGNED BY: MATHUR
CHECKED BY: TRELLO

GREENE & BRADFORD, INC.
CONSULTING ENGINEERS
PROJECT 02341
4/7/06-MML

FILE NAME = J:\02341\DRAWINGS\SN085-4307\SN0854307_55.dgn
PLOT SCALE = CH0000
PLOT TIME = 9/8/06 10:52 AM
OPERATOR = michaell