

F.A.S. RTE.	SECTION	COUNTY	TOTAL SHEETS	SHEET NO.
583	****	SCHUYLER	56	1

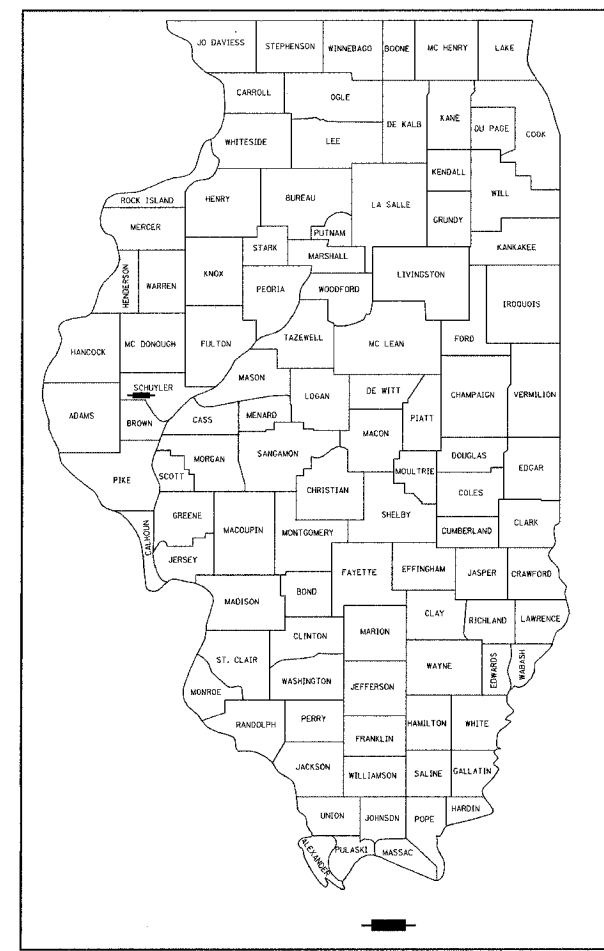
02-00067-00-BR

INDEX OF SHEETS
SHEET NO. DESCRIPTION

1	COVER SHEET
2	SUMMARY OF QUANTITIES
3	GENERAL NOTES
4 - 5	TYPICAL SECTIONS
6 - 7	SCHEDULE OF QUANTITIES
8	HORIZONTAL AND VERTICAL CONTROL
9	PLAN AND PROFILE
10 - 15	STAGE CONSTRUCTION
16	LANE RESTRICTION PLAN
17	EROSION CONTROL PLAN
18 - 19	DETAILS
20 - 45	BRIDGE SHEETS
46 - 56	CROSS SECTIONS

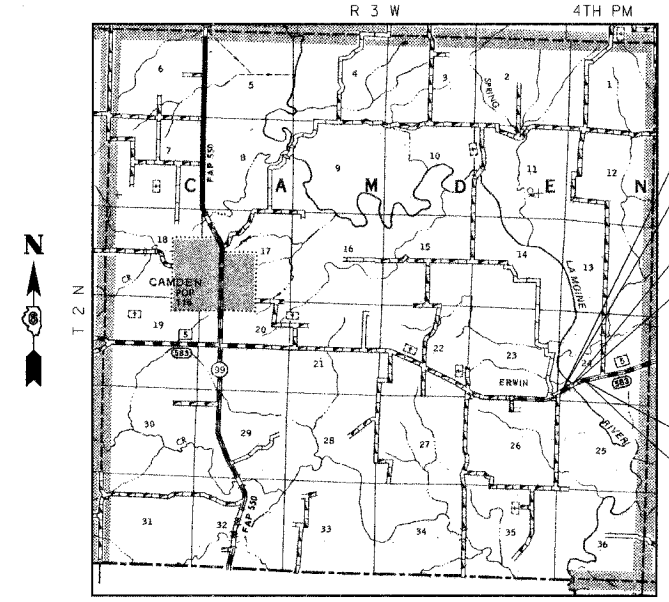
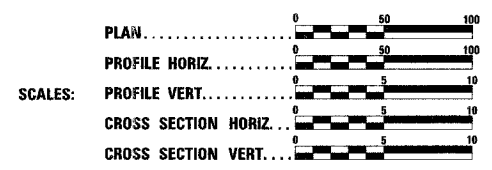
STATE OF ILLINOIS
DEPARTMENT OF TRANSPORTATION
DIVISION OF HIGHWAYS
PLANS FOR PROPOSED
LOCAL AGENCY IMPROVEMENTS
MAJOR BRIDGE PROGRAM PROJECT

CH-5 (FAS ROUTE 583)
SECTION 02-00067-00-BR
PROJECT BRS-583(111)
SCHUYLER COUNTY
CAMDEN ROAD IMPROVEMENTS
JOB NUMBER C-96-209-05



STANDARDS

000001-04	STANDARD SYMBOLS, ABBREVIATIONS AND PATTERNS
280001-02	TEMPORARY EROSION CONTROL SYSTEMS
420401-05	BRIDGE APPROACH PAVEMENT
482001	BITUMINOUS SHOULDER ADJACENT TO FLEXIBLE PAVEMENT
515001-02	NAME PLATE FOR BRIDGE
601101	CONCRETE HEADWALL FOR PIPE DRAIN
630001-06	STEEL PLATE BEAM GUARDRAIL
630301-03	SHOULDER WIDENING FOR TYPE 1 (SPECIAL) GUARDRAIL TERMINALS
631026-02	TRAFFIC BARRIER TERMINAL TYPE 5 & 5A
631031-05	TRAFFIC BARRIER TERMINAL, TYPE 6
635006-02	REFLECTOR AND TERMINAL MARKER PLACEMENT
635011-01	REFLECTOR MARKER AND MOUNTING DETAILS
666001	RIGHT OF WAY MARKERS
701011-01	OFF-RD MOVING OPERATIONS, 2L, 2W, DAY ONLY
701201-02	LANE CLOSURE, 2L, 2W, DAY ONLY, FOR SPEEDS >= 45 MPH
701301-02	LANE CLOSURE, 2L, 2W, SHORT TIME OPERATIONS
701306-01	LANE CLOSURE, 2L, 2W, SLOW MOVING OPERATIONS, DAY ONLY, FOR SPEEDS >= 45 MPH
701311-02	LANE CLOSURE 2L, 2W MOVING OPERATIONS - DAY ONLY
701321-08	LANE CLOSURE, 2L, 2W, BRIDGE REPAIR WITH BARRIER
701326-02	LANE CLOSURE, 2L, 2W, PAVEMENT WIDENING, FOR SPEEDS >= 45 MPH
702001-06	TRAFFIC CONTROL DEVICES
704001-02	TEMPORARY CONCRETE BARRIER
631011-02	TRAFFIC BARRIER TERMINAL TYPE 2

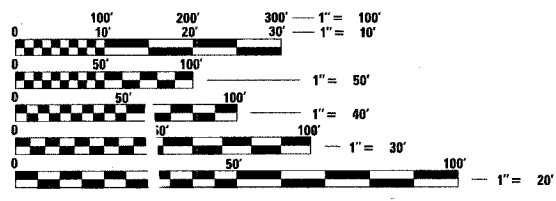


STA. 48+80.00
BEGIN IMPROVEMENTS
SECTION 02-00067-00-BR

EXISTING STRUCTURE NO. 085-3052:
NINE SPAN STEEL BEAM, 435'-2" BACK TO BACK ABUTMENTS
BY 24'-0" OUT TO OUT DECK.

PROPOSED STRUCTURE NO. 085-3054:
FIVE SPAN REINFORCED CONCRETE DECK COMPOSITE WITH
CONTINUOUS ROLLED STEEL BEAMS ON REINFORCED CONCRETE
ABUTMENTS, 455'-6" BACK TO BACK ABUTMENTS, 33'-2" OUT TO
OUT DECK, 30'-0" CLEAR ROADWAY WIDTH.

STA. 62+50.00
END IMPROVEMENTS
SECTION 02-00067-00-BR



FULL SIZE PLANS HAVE BEEN PREPARED USING STANDARD
ENGINEERING SCALERS. REDUCED SIZED PLANS WILL NOT
CONFORM TO STANDARD SCALES. IN MAKING MEASUREMENTS
ON REDUCED PLANS, THE ABOVE SCALES MAY BE USED.

J.U.L.I.E.
JOINT UTILITY LOCATION INFORMATION FOR EXCAVATION
1-800-892-0123

UTILITIES

ADAMS ELECTRIC
AMERENCIPS
FRONTIER COMMUNICATIONS OF RUSHVILLE
PO BOX 347
RUSHVILLE, ILLINOIS
(217) 322-3388
CAMDEN-LITTLETON WATER COMMISSION
(309) 257-2324

DESIGN DESIGNATION - CLASS III ROADWAY

LENGTH OF PROJECT = 1370.00 FEET = 0.259 MILES
NET LENGTH OF PROJECT = 1370.00 FEET = 0.259 MILES

COLLECTOR HIGHWAY ADT = 1100 (2005) 1350 (2025)
3R GUIDELINES

APPROVED 7-13 2006
David L. Schneider
COUNTY ENGINEER

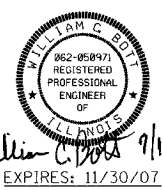
PASSED 8-25 2006
Tommy J. L.
DISTRICT SIX ENGINEER OF
LOCAL ROADS & STREETS

PASSED 8-25 2006
Chris Plakow
DISTRICT SIX ENGINEER OF
CONSTRUCTION

Releasing For
Bid Based on
Limited Review 8-25 2006
Christine M Reed
DEPUTY DIRECTOR OF HIGHWAYS,
REGION FOUR ENGINEER

STATE OF ILLINOIS
DEPARTMENT OF TRANSPORTATION

**PRINTED BY THE AUTHORITY
OF THE STATE OF ILLINOIS**



REVISIONS	NAME	DATE

COMPUTER FILE NO.
02157COV
PROJECT 02157
6/30/06-MDS

PLOT DATE = 7/13/2006
 PLOT SCALE = 50.0000 / IN.
 REFERENCE = 999999
 OPERATOR = gmgj