

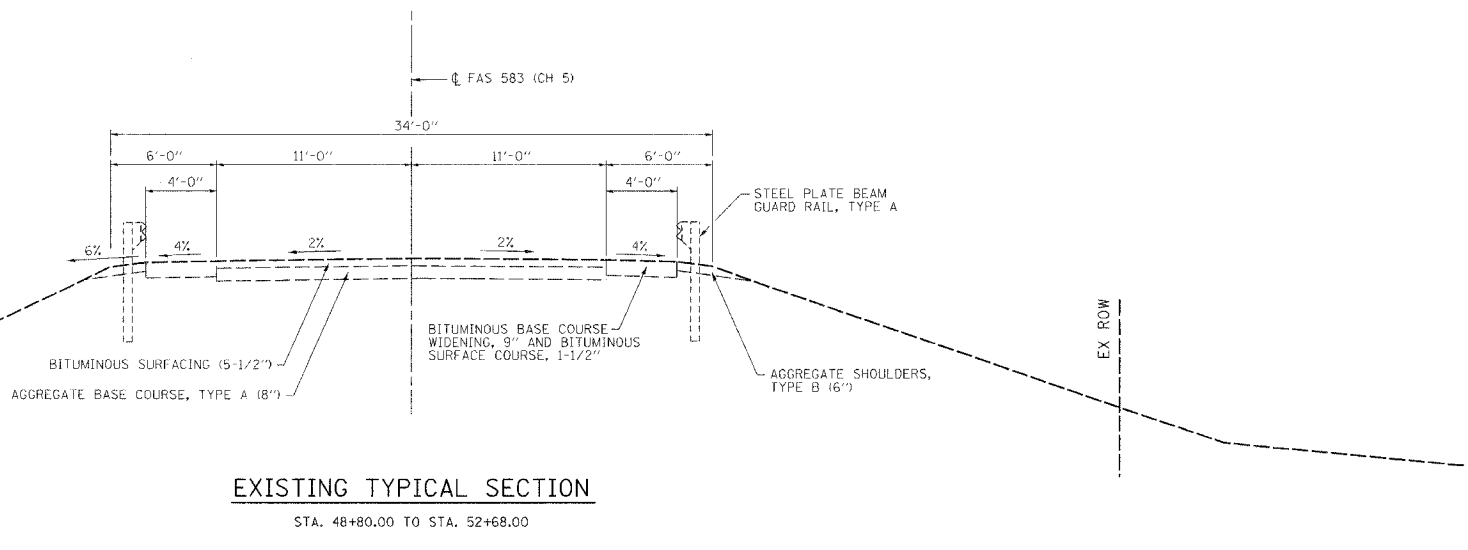
CONTRACT NO.				
F.A.S. RTE.	SECTION	COUNTY	TOTAL SHEETS	SHEET NO.
583	****	SCHUYLER	56	4
STA.		TO STA.		
FED. ROAD DIST. NO.	ILLINOIS	FED. AID PROJECT	**	
**** SECTION 02-00067-00-BR				
** BRS-583(111)				

PAVEMENT DESIGN DATA

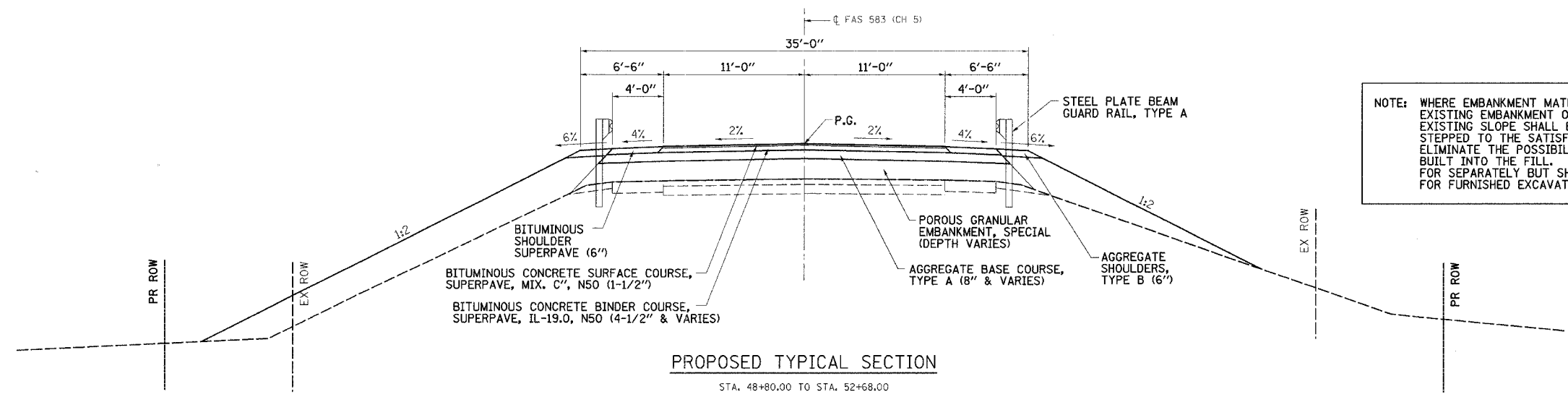
CLASS III ROADWAY (80,000 LB)
 DESIGN PERIOD : 15 YEARS
 STRUCTURAL DESIGN TRAFFIC (SDT):
 YEAR = 2017
 PV = 975
 SU = 78
 MU = 56
 TRAFFIC FACTOR (TF) = 0.2263
 MINIMUM SOIL SUPPORT : $E_{R1} = 3$

PAVEMENT PROVIDED:
 1 1/2" BITUMINOUS CONCRETE SURFACE COURSE, SUPERPAVE, MIX "C", N50
 4 1/2" BITUMINOUS CONCRETE BINDER COURSE, SUPERPAVE, IL-19.0, N50
 8" AGGREGATE BASE COURSE, TYPE A

BITUMINOUS CONCRETE MIXTURE REQUIREMENTS				
ITEM	AGGREGATE COMPOSITION	ASPHALT GRADE	ALLOWABLE RAP	VOIDS
BINDER, SUPERPAVE	IL-19.0	PG 64 -22	15%	4.0% @ N50
SURFACE, SUPERPAVE	IL-9.5 or 12.5 Mix "C"	PG 64 -22	15%	4.0% @ N50
SHOULDER, SUPERPAVE	BAM	PG 58 -22	15%	2.0% @ N30

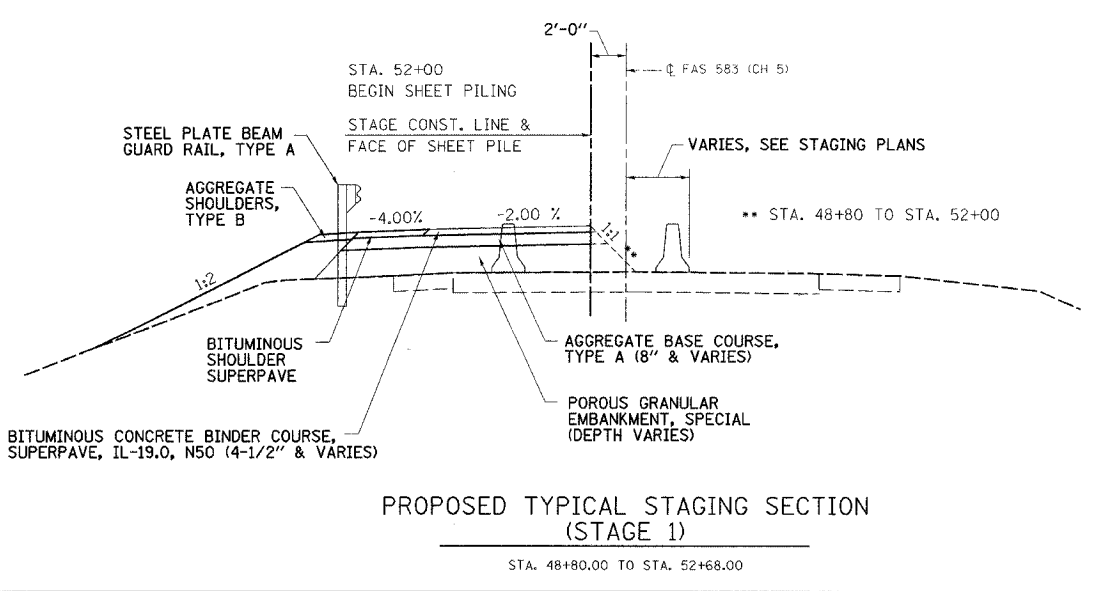


EXISTING TYPICAL SECTION
 STA. 48+80.00 TO STA. 52+68.00

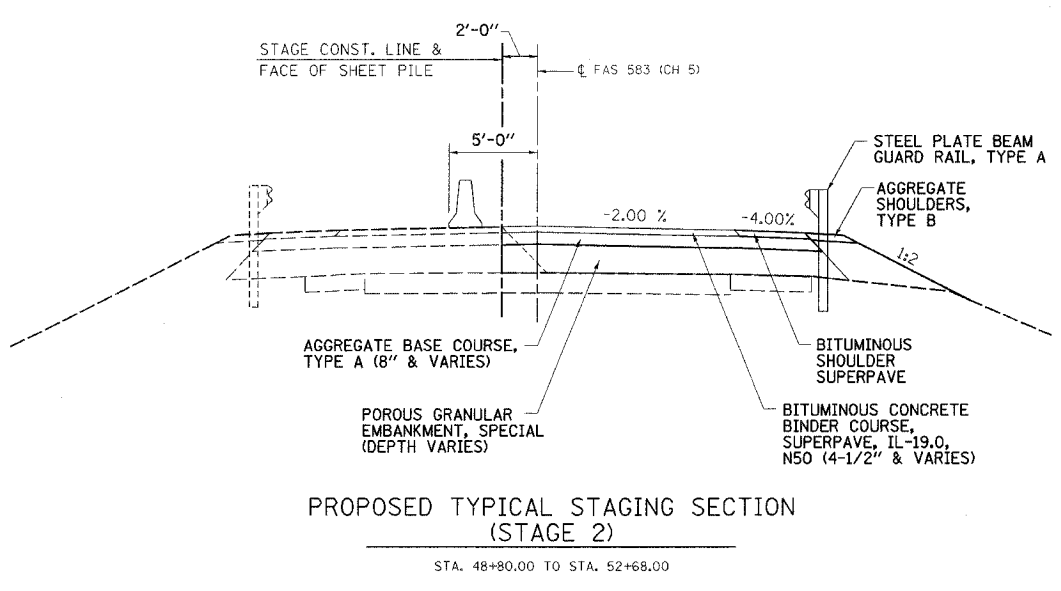


PROPOSED TYPICAL SECTION
 STA. 48+80.00 TO STA. 52+68.00

NOTE: WHERE EMBANKMENT MATERIAL IS BEING PLACED ON THE EXISTING EMBANKMENT OR OTHER SLOPED SURFACE, THE EXISTING SLOPE SHALL BE DEEPLY PLOWED, BENCHED OR STEPPED TO THE SATISFACTION OF THE ENGINEER TO ELIMINATE THE POSSIBILITY OF A SHEAR PLANE BEING BUILT INTO THE FILL. THIS WORK SHALL NOT BE PAID FOR SEPARATELY BUT SHALL BE INCLUDED IN THE COST FOR FURNISHED EXCAVATION.



PROPOSED TYPICAL STAGING SECTION (STAGE 1)
 STA. 48+80.00 TO STA. 52+68.00



PROPOSED TYPICAL STAGING SECTION (STAGE 2)
 STA. 48+80.00 TO STA. 52+68.00

PLOT DATE = 8/04/06
 FILE NAME = 02157TYP
 OPERATOR = MDS

REVISIONS	
NAME	DATE

ILLINOIS DEPARTMENT OF TRANSPORTATION

TYPICAL SECTIONS

FAS 583 (CH 5) OVER LAMOINE RIVER
 SEC. 02-00067-00-BR
 SCHUYLER COUNTY

SCALE: VERT. _____
 HORIZ. _____
 DATE 5/05/06

DRAWN BY SUTHEARD
 CHECKED BY BOTT

GREENE & BRADFORD, INC.
 OF SPRINGFIELD

COMPUTER FILE NO. 02157TYP
 PROJECT 02157
 8/04/06 - MDS