

F.A.S. RTE.	SECTION	COUNTY	TOTAL SHEETS	SHEET NO.
583	****	SCHUYLER	56	10

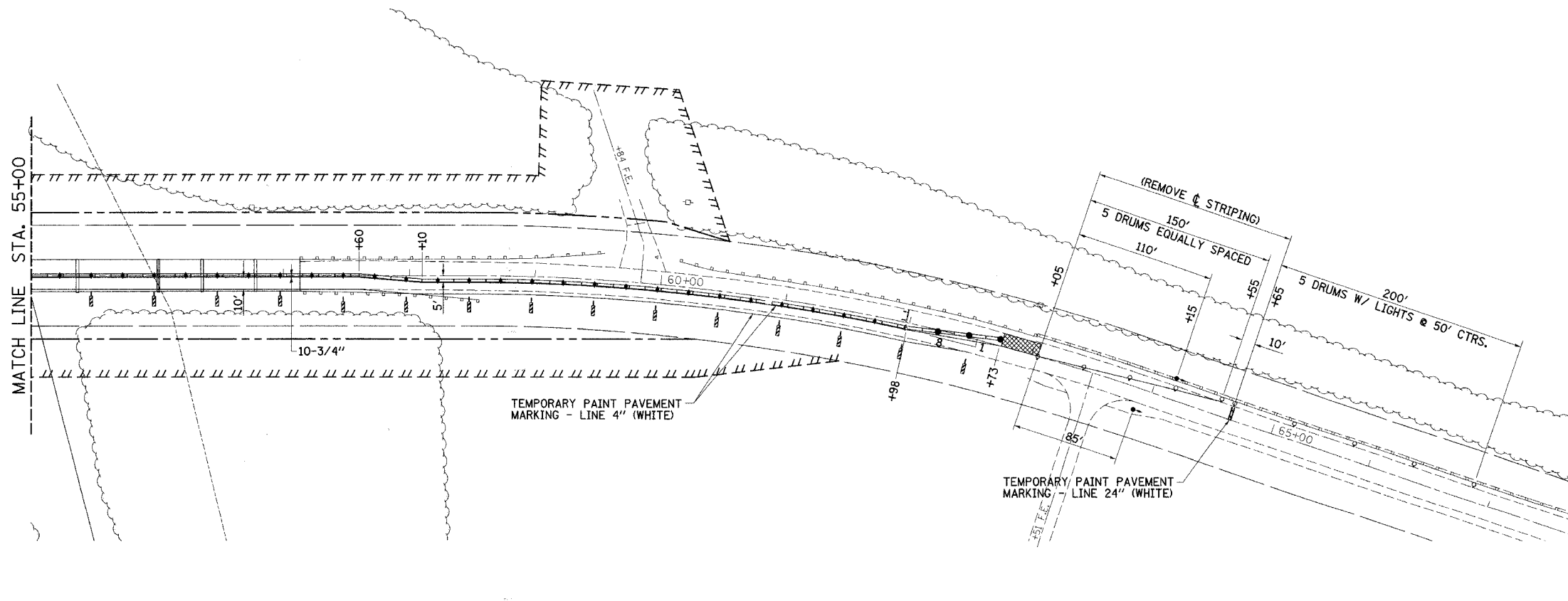
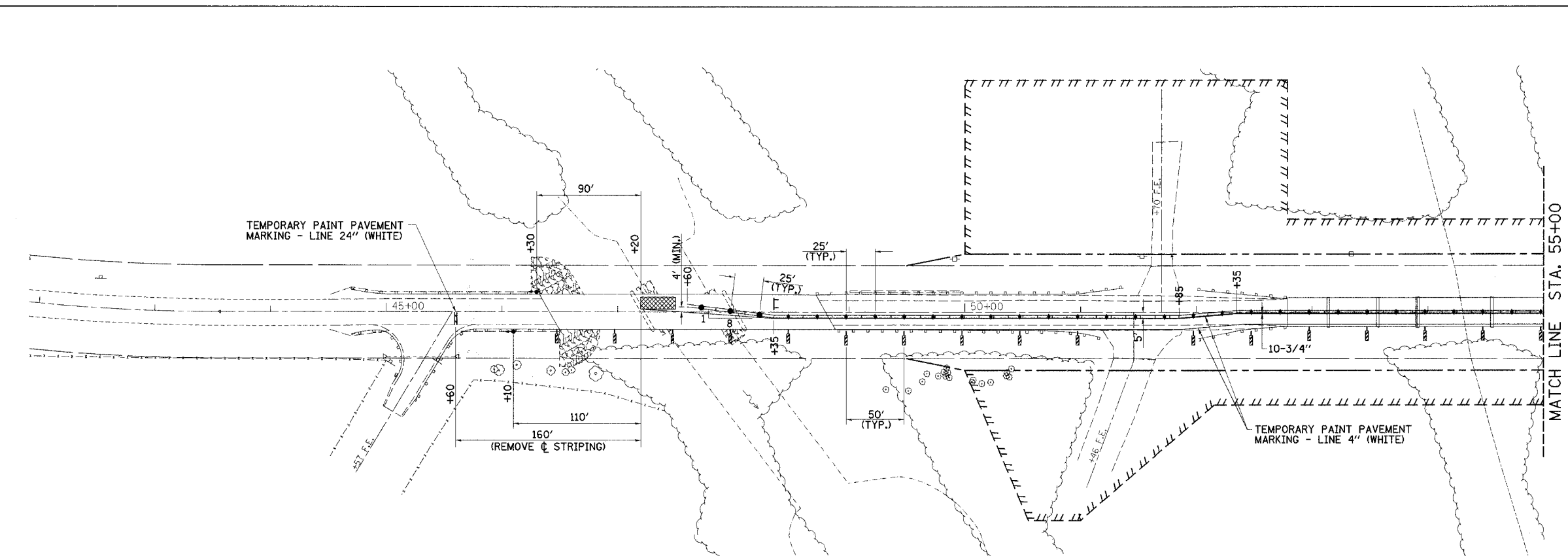
STA.	TO STA.

FED. ROAD DIST. NO.	ILLINOIS	FED. AID PROJECT	**
**** SECTION 02-00067-00-BR			
** BRS-583(111)			



LEGEND

- TYPE III BARRICADE
- TRAFFIC SIGNALS
- DRUM W/ STEADY BURNING LIGHT
- IMPACT ATTENUATORS (NON-REDIRECTIVE), TEST LEVEL 3
- DOUBLE VERTICAL PANEL
- TYPE C BIDIRECTIONAL REFLECTOR
- STEADY BURNING LIGHTS AND DOUBLE VERTICAL PANEL



STAGE 1 SEQUENCE OF OPERATIONS

1. POST ADVISORY SPEED ZONE = 35 MPH
2. BITUMINOUS PAVEMENT REMOVAL, INSTALL BITUMINOUS BASE COURSE WIDENING, STAGE 1 TRAFFIC ONLY, TEMPORARY TRAFFIC SIGNALS, ATTENUATORS, TEMPORARY CONCRETE BARRIERS, DRUMS, AND ALL OTHER ITEMS AS PER THESE DETAILS AND STANDARD 701321. BEGIN OPERATING UNDER STAGE 1 TRAFFIC CONDITIONS.
3. DRIVE TEMPORARY SHEET PILING, REMOVE EXISTING PAVEMENT, REMOVE NORTH HALF OF EXISTING STRUCTURE, GUARDRAIL AND TRAFFIC BARRIER TERMINAL REMOVAL,
4. CONSTRUCT NORTH HALF OF PROPOSED STRUCTURE, PLACE AND COMPACT ROADWAY FILL, AGGREGATE BASE COURSE, BITUMINOUS CONCRETE BINDER COURSE, BITUMINOUS SHOULDERS, AGGREGATE SHOULDERS, STEEL PLATE BEAM GUARD RAIL, AND TRAFFIC BARRIER TERMINALS.

ILLINOIS DEPARTMENT OF TRANSPORTATION

STAGE 1 CONSTRUCTION TRAFFIC CONTROL

FAS 583 (CHS) OVER LAMOINE RIVER
SECTION 02-00067-00-BR
SCHUYLER COUNTY

SCALE: VERT.	DRAWN BY SUTHEARD
DATE 5/9/06	CHECKED BY BOTT
COMPUTER FILE NO. 02157STG1	PROJECT 02157
5/9/06-MDS	



STAGE 1 CONSTRUCTION

PLOT DATE = 8/24/06
FILE NAME = #FILEL10
SCALE = #SCALE1
REFERENCE = #USER04
OPERATOR = #USER04