

STATE OF ILLINOIS
DEPARTMENT OF TRANSPORTATION

WATERWAY INFORMATION

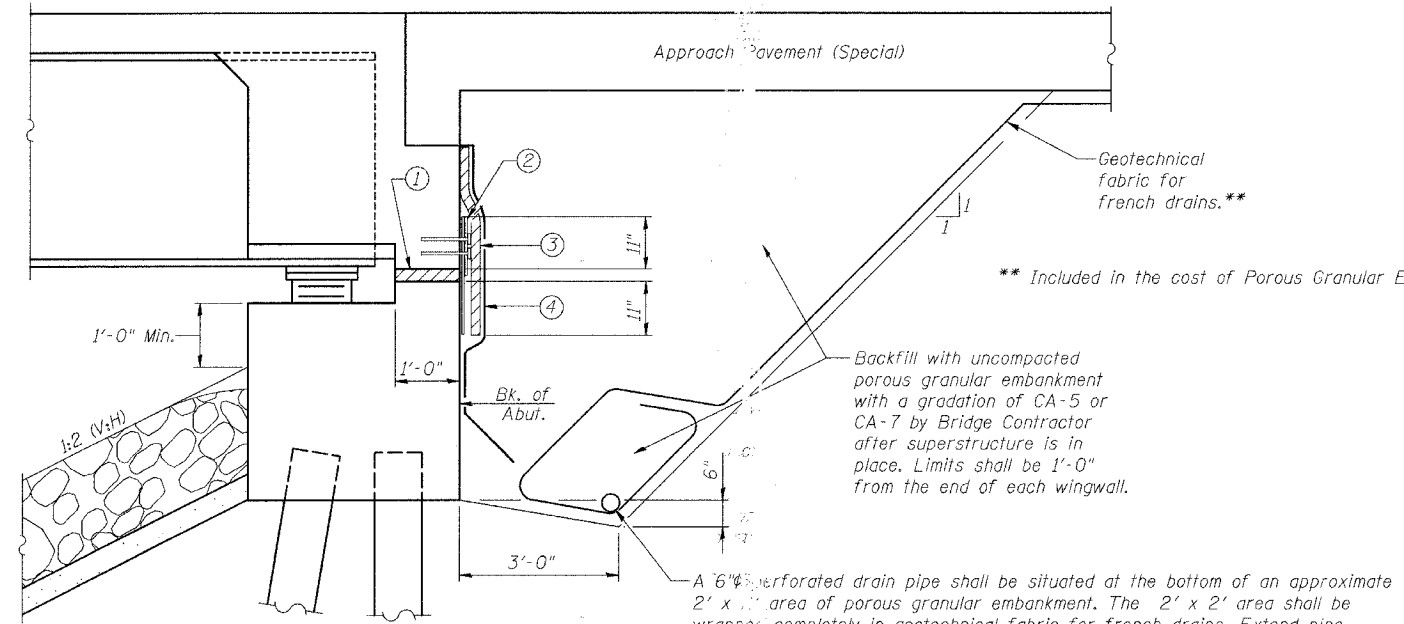
ROUTE NO.	SECTION	COUNTY	TOTAL SHEETS	SHEET NO.
FAS 583	*	SCHUYLER	56	21
FED. ROAD DIST. NO.	ILLINOIS	FED. AID PROJECT-		

* 02-00067-00-BR
Contract # 93A25

Drainage Area = 1114.00 sq. mi. Low Grade Elev. 478.77 ft. Sta. 62+00 to Sta. 82+00

Flood	Main Bridge	Relief Bridge	Over-the-Road	Total	Discharge (cfs)			Nat. w levees H.W.E.	Nat. H.W.E.	Head - Ft.			Headwater Elevation		
					Exist.	Prop.2000	Prop.2004			Exist.	Prop.2000	Prop.2004	Exist.	Prop.2000	Prop.2004
Overtopping Existing Road	5	14861	10,632.8	10,509	5061.2	4844.1	4634.9	468.92	474.62	0.49	-0.33	-0.28	475.11	474.29	475.34
		na	4732.2	4856	189.3	1886.1									
		504	0	0	218.9	0.0	0.0								
	8	15,365	15,365	15,365	5280.1	6735.5	6521	469.57	476.07	0.32	-0.41	-.040	476.39	475.66	475.67
		na	5886	5818	2126.5	2121.0									
		7785	0	0	1678.3	0.0	0.0								
	25	17,977	17,977	17,977	6799.6	7340.1	7333.6	471.29	477.55	0.06	-0.22	-0.34	477.61	477.33	477.21
		8714	17,212	17,139	5121.3	5121.3	5821.3								
		na	8620	8693	2388.6	2388.6									
	Design	17118	0	0	3730.2	0.0	0.0	471.42	477.64	0.06	-0.19	-0.31	477.70	477.45	477.33
		25,832	25,832	25,832	8851.5	7509.1	8209.9								
		9030	17,719.7	17,716	5121.3	5121.3	5863.9								
Overtopping Proposed Road 2000	na	9000.3	9004	2407.6	2408.7		471.49	477.95	0.07	-0.06	-0.19	478.02	477.89	477.76	
	17,690	0	0	3771.1	0.0	0.0									
	26,720	26,720	26,720	8892.4	7528.1	8272.6									
Max. Calc.	9102	19,020.5	20,056	5121.3	5121.3	6014.2	471.96	478.30	0.07	0.13	0.08	478.37	478.43	478.38	
	na	10,584.2	10,217	2471.8	2479.7										
	21,171	668.3	0	4334.8	263.0	0.0									
100	30,273	30,273	30,273	9456.1	7856.2	8493.9									
	9012	21,765.5	23,087	5121.3	5121.3	6231.6									
	na	12,329.1	11,870	2542.3	2558.5										
100	25,945	862.4	0	5117.4	240.1	0.0									
	34,957	34,957	34,957	10,238.7	7904.1	8790.1									

The IDNR/OWR has issued Permit # S 2005027 for the Construction of this Project



SECTION THRU SEMI-INTEGRAL ABUTMENT

- 2" Preformed Joint Filler (Section 1051.08 of the Standard Specifications) bonded to abutment cap with approved adhesive (full width of cap and between diaphragm & wing).
- Fabric Reinforced Elastomeric Mat (See Special Provisions). Fabric mat shall be 24" wide and attached full width to the abutment cap with a 3/8" x 5" steel plate and 1/2" φ studs with nuts and washers at 12" cts. Lap fabric mat minimum 3'-0" at Stage Construction Joint.
- 2" Preformed Joint Filler (Section 1051.08 of the Standard Specifications) bonded to superstructure (full width of cap).
- Geocomposite Wall Drain (Section 591 of the Standard Specifications - full width of cap and 3'-0" minimum past joint between diaphragm & wing).

Items ① ② ③ & ④ shall be included in the cost of Concrete Superstructure.

LIST OF SHEETS

- General Plan & Elevation
- General Notes & Details
- Stage Construction Details
- Temporary Concrete Barrier
- 7. Top of Slab Elevations
- Superstructure
- 10. Superstructure Details
- Diaphragm Details
- Framing Plan
- Structural Steel Details
- Bearing Details
- West Abutment
- East Abutment
- Piers
- Concrete Pile Details
- Bar Splicer Assembly Details
- Anchor Bolt Details for Bearings
- 26. Boring Logs

GENERAL NOTES

Fasteners shall be high strength bolts. Bolts 7/8" φ, open holes 5/16" φ, unless otherwise noted.

Calculated weight of Structural Steel = 432,490 lb.

Field welding of construction accessories will not be permitted to beams.

Anchor bolts shall be set before bolting diaphragms over supports.

The main load carrying member components subject to tensile stress shall conform to the Supplemental Requirements for Notch Toughness Zone 2. These components are the wide flange beams.

Reinforcement bars shall conform to the requirements of AASHTO M 31 or M 322 Grade 60.

Layout of slope protection system may be varied in the field to suit ground conditions as directed by the Engineer.

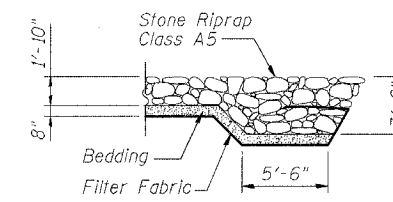
The Contractor shall drive one test pile in a permanent location at each Abutment and Piers 1 & 3, as directed by the Engineer before ordering the remainder of piles.

All Construction joints shall be bonded.

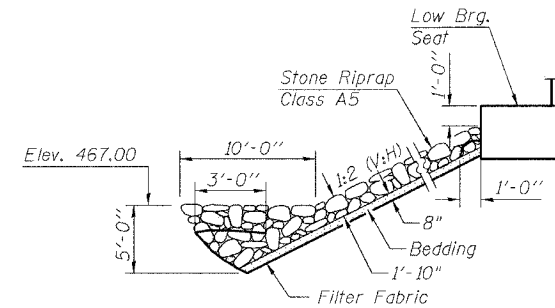
The Inorganic zinc rich primer / Acrylic / Acrylic Paint System shall be used for shop and field painting of new structural steel except where otherwise noted. The color of the final finish coat for all steel surfaces shall be gray, Munsell No 5B 7/1. The color of final finish coat for the exterior and bottom flange of the fascia beams shall be Interstate Green, Munsell No. 7.5G 4/8. See Special Provisions for "Cleaning and Painting New Metal Structures".

TOTAL BILL OF MATERIAL

ITEM	UNIT	SUPER	SUB	TOTAL
Porous Granular Embankment	Cu. Yd.		160	160
Stone Riprap, Class A5	Sq. Yd.		550	550
Filter Fabric	Sq. Yd.		550	550
Removal of Existing Structures	Each			1
Structure Excavation	Cu. Yd.		176	176
Concrete Structures	Cu. Yd.		218.7	218.7
Concrete Superstructure	Cu. Yd.	496		496
Bridge Deck Grooving	Sq. Yd.	1412		1412
Protective Coat	Sq. Yd.	1900		1900
Elastomeric Bearing Assembly, Type II	Each	12		12
Furnishing and Erecting Structural Steel	L. Sum	1		1
Stud Shear Connectors	Each	4572		4572
Reinforcement Bars, Epoxy Coated	Pound	111,460	17,320	128,780
Furnishing Metal Pile Shells, 12"	Foot		3510	3510
Driving and Filling Shells	Foot		3510	3510
Test Pile Metal Shells	Each		4	4
Name Plates	Each	1		1
Floor Drains	Each	56		56
Temporary Sheet Piling	Sq. Ft.		1665	1665
Bar Splicers	Each	1252	184	1436
Underwater Structure Excavation Protection (Location 1)	Each		1	1
Underwater Structure Excavation Protection (Location 2)	Each		1	1



SECTION A-A



STONE RIPRAP ANCHOR DETAIL

ILLINOIS DEPARTMENT OF TRANSPORTATION

GENERAL NOTES

FAS 583 (CHS) OVER LAMOINE RIVER
SECTION 02-00067-00-BR
SCHUYLER COUNTY
STATION 54+95.75
S.N. 085-3054

SCALE: VERT. DATE: 6/7/05
DRAWN BY: LANDREY
DESIGNED BY: MATHUR
CHECKED BY: TRELLO

COMPUTER FILE NO. SNO853054-CN
PROJECT 02157
9/25/06-MML

REVISIONS	
NAME	DATE



FILE NAME = J:\02157\DRAWINGS\SN085-3054\SN0853054_CN.dgn
PLOT SCALE = 28.00
PLOT TIME = 3/24/06
OPERATOR = michellel