

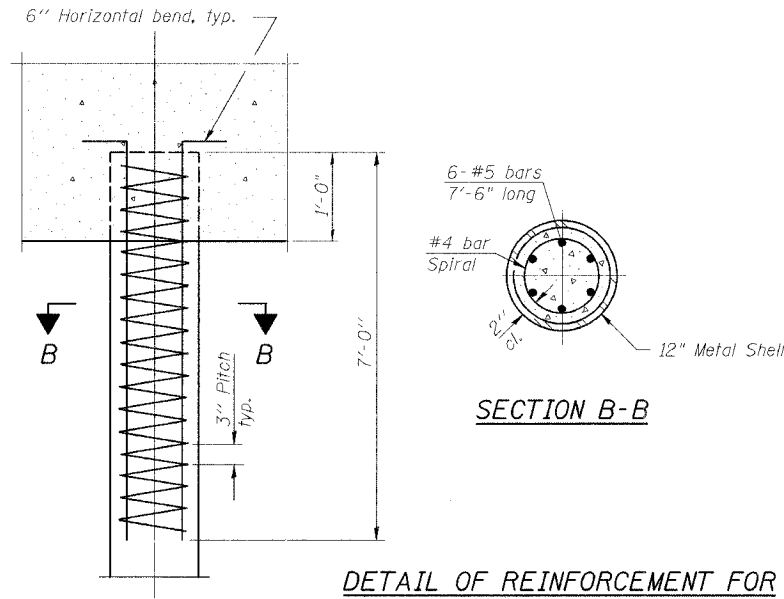
STATE OF ILLINOIS
DEPARTMENT OF TRANSPORTATION

ROUTE NO.	SECTION	COUNTY	TOTAL SHEETS	SHEET NO.
FAS 583	#	SCHUYLER	56	37
FED. ROAD DIST. NO.	ILLINOIS	FED. AID PROJECT		

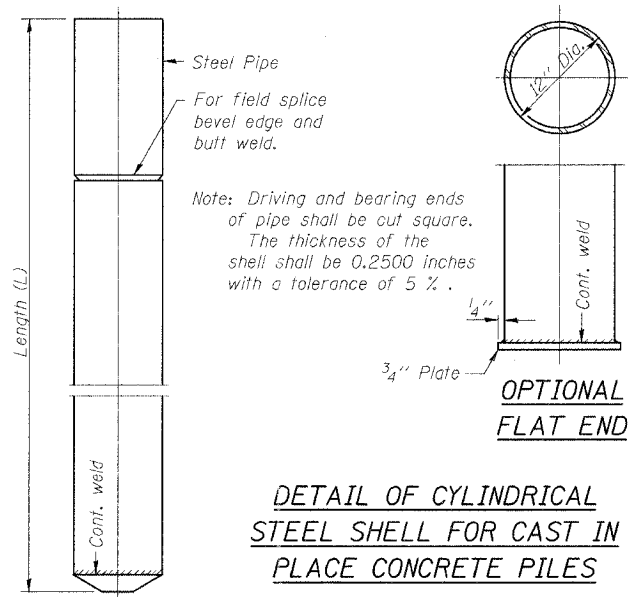
SHEET NO. 18

26 SHEETS

* 02-00067-00-BR
Contract # 03425



DETAIL OF REINFORCEMENT FOR METAL SHELLS AT ABUTMENTS



DETAIL OF CYLINDRICAL STEEL SHELL FOR CAST IN PLACE CONCRETE PILES

FILE NAME = J:\0267\dr\dwg\085-3054\SN0853054_PIL.dgn
PLOT DATE = 8/10/2006
PLOT TIME = 7:45:16 AM
OPERATOR = mic'helle!

REVISIONS	
NAME	DATE

ILLINOIS DEPARTMENT OF TRANSPORTATION
CONCRETE PILE DETAILS
FAS 583 (CHS) OVER LAMOINE RIVER
SECTION 02-00067-00-BR
SCHUYLER COUNTY
STATION 54+95.75
S.N. 085-3054

SCALE: VERT. DRAWN BY: LANDREY
 HORIZ. DESIGNED BY: MATHUR
DATE: 6/7/05 CHECKED BY: TRELLO

GREENE & BRADFORD, INC.
CONSULTING ENGINEERS
OF SPRINGFIELD
PROFESSIONAL ENGINEERS
REGISTERED IN THE STATE OF ILLINOIS
OFFICE: 100 SOUTH MAIN STREET, SPRINGFIELD, ILLINOIS 62761
TEL: 217-223-8800 FAX: 217-223-8801

COMPUTER FILE NO.
SN0853054.PIL
PROJECT 02157
6/2/06-MML