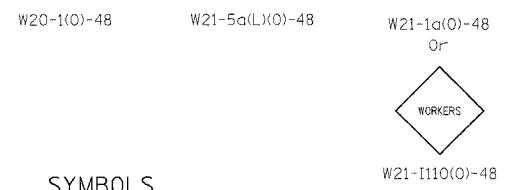
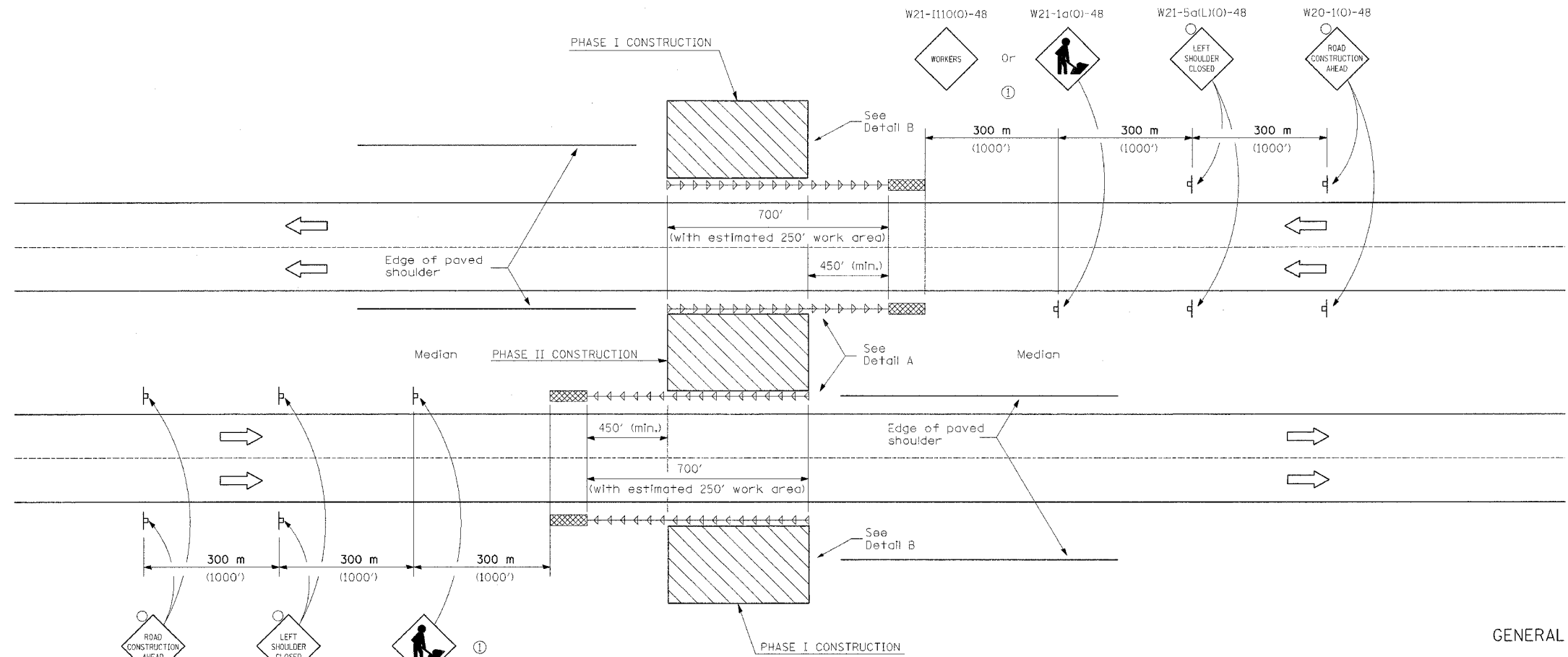
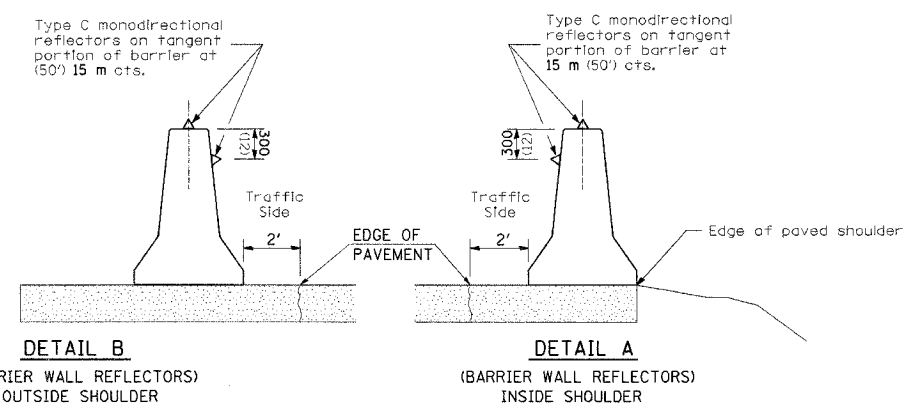


F.A.I. RTE.	SECTION	COUNTY	TOTAL SHEETS	SHEET NO.
•	(25-4 HB-1)B	EFFINGHAM	67	49
STA.		TO STA.		
FED. ROAD DIST. NO.	ILLINOIS	FED. AID PROJECT		

• FAI RTE. 57/70



- SYMBOLS**
- Work area
 - Sign
 - Impact attenuator (Partial Re-Directive)
 - Temporary Concrete Barrier with type C monodirectional reflector
 - Flashing light



GENERAL NOTES

This Standard is used where any vehicles, equipment, workers or their activities will encroach on the shoulder where temporary concrete barrier is utilized.

① When vehicles, equipment, workers or their activities encroach in the area 4.5 m (15') to the edge of pavement.

All dimensions are in millimeters (inches) unless otherwise shown.

REVISIONS	
NAME	DATE

ILLINOIS DEPARTMENT OF TRANSPORTATION
 SHOULDER CLOSURE, MULTILANE,
 MEDIAN PIER CONSTRUCTION
 WITH BARRIER
STANDARD 701101-SPECIAL

SCALE: VERT. _____
 HORIZ. _____

DATE _____ DRAWN BY _____
 CHECKED BY _____

PLOT DATE = 6/24/2006
 FILE NAME = WFL1E1
 PLOT SCALE = #SCALE#
 USER NAME = district