

T.R.	SECTION	COUNTY	TOTAL SHEETS	SHEET NO.
82	03-18108-00-BR	WAYNE	12	2
PROJECT# BROS-19149		CONTRACT# 95476		
LEC JOB # H041017WA				

323 W. 3RD ST.
P.O. BOX 160
MT. CARMEL, IL
62863
PHONE:
(618)-262-8651
FAX:
(618)-263-3327

405 W. STATE ST
SUITE 1
PRINCETON, IN
47670
PHONE:
(812)-386-7611
FAX:
(812)-385-2812



PROFESSIONAL DESIGN FIRM
LAND SURVEY & PROFESSIONAL ENGINEERING CORPORATION
184-000887
(62-032435)(35-002769)



AARON M. MEFFORD
NAME
SIGNATURE
DATE
11-90-07
EXPIRES

ORCHARD TOWNSHIP
TOWNSHIP ROUTE 82
WAYNE COUNTY, ILLINOIS

SHEET TITLE:

PLAN & PROFILE

SCALE:	VARIES
BY:	AMM
DATE:	6/06
REV:	

2 OF 12 SHEETS

SHEET NO. 2

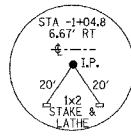
GENERAL NOTES:

THIS SECTION SHALL BE CONSTRUCTED IN ACCORDANCE WITH THE PLANS, SPECIAL PROVISIONS AND STANDARD SPECIFICATIONS FOR ROAD AND BRIDGE CONSTRUCTION, ADOPTED JANUARY 1, 2002.

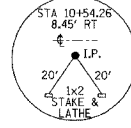
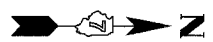
THE WORK INVOLVED ON THIS SECTION CONSISTS OF THE REMOVAL OF THE EXISTING STRUCTURE, THE CONSTRUCTION OF A 75 FOOT LONG SINGLE SPAN PRECAST, PRESTRESSED CONCRETE DECK BEAM BRIDGE, EARTH APPROACHES, AGGREGATE SURFACE COURSE AND OTHER MISCELLANEOUS ITEMS NECESSARY TO COMPLETE THIS SECTION.

ALL ELEVATIONS ARE BASED ON U.S.G.S. MEAN SEA LEVEL DATUM.

IT SHALL BE THE CONTRACTOR'S RESPONSIBILITY TO CONTACT ALL THE UTILITIES, AFFECTING THE PROJECT, PRIOR TO CONSTRUCTION.

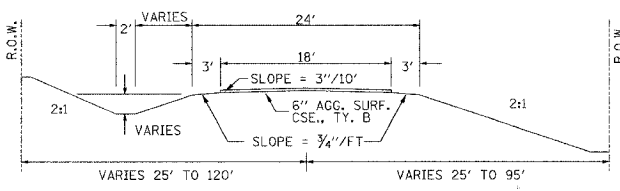


SECTION END TRANSITIONS
STA. 0 + 50 TO STA 1 + 00
STA 8 + 65 TO STA 9 + 35

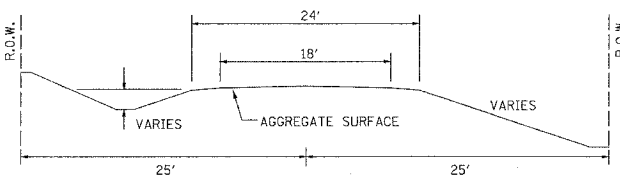


P.I. STA= 7+30.49
Δ= 01°05'37" LT

TYPICAL CROSS SECTION PROPOSED



TYPICAL CROSS SECTION EXISTING



UTILITIES:

J.U.L.I.E. 1-800-892-0123

WABASH TELEPHONE CO-OP
P.O. BOX 299
210 S. CHURCH
LOUISVILLE, IL 62858
618-665-3311

WAYNE-WHITE ELECTRIC CO-OP
ROUTE 45 WEST
FAIRFIELD, IL 62837
618-842-2196

WESTERN WAYNE
WATER DISTRICT
MAIN ST.
WAYNE CITY, IL 62895
618-895-2813

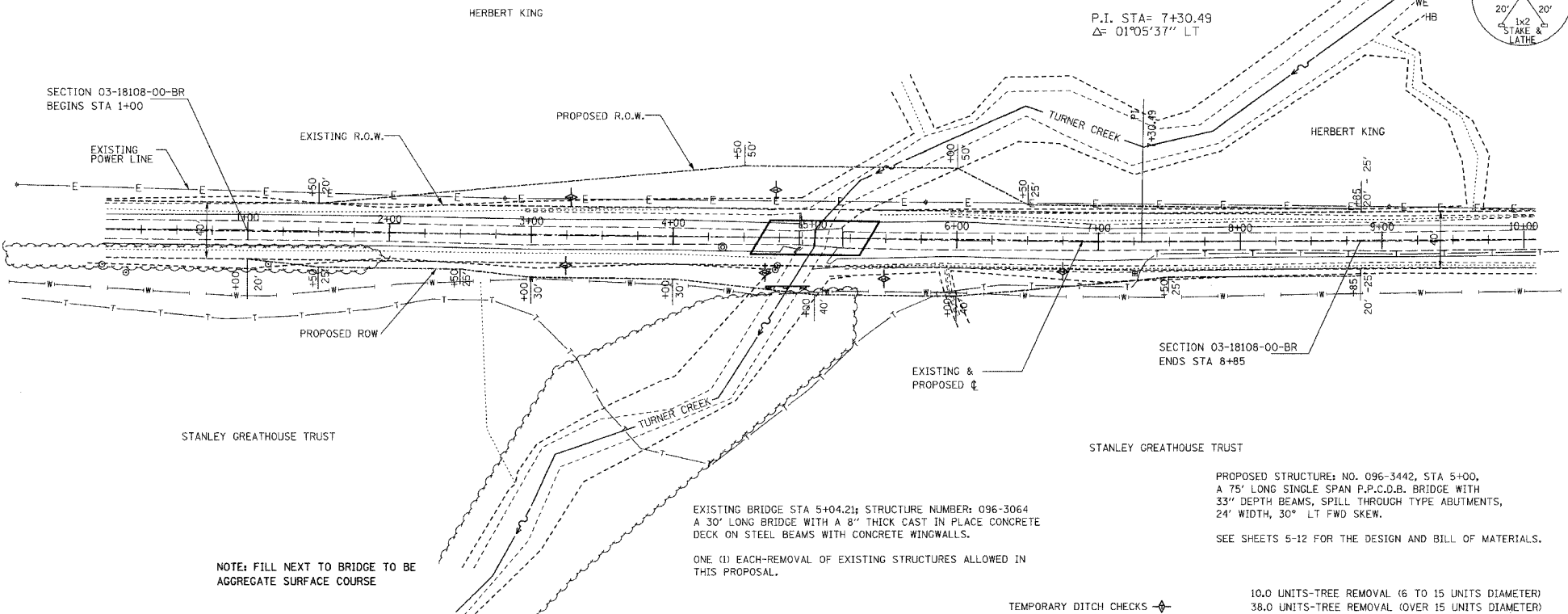
NOTE: CONSTRUCT SPECIAL DITCH

STA 0+50 TO STA 4+69 LT
STA 1+00 TO STA 4+69 RT
STA 5+50 TO STA 9+00 LT
STA 5+31 TO STA 8+50 RT

NOTE: CONSTRUCT STONE RIPRAP DITCH

STA 4+59 TO STA 4+69 LT & RT (0.48 TON/LIN FT)
STA 5+31 TO STA 5+41 RT (0.48 TON/LIN FT)
15 TON STONE RIPRAP DITCH ALLOWED IN PROPOSAL.

SEE SHEET NO. 13 FOR STONE RIPRAP DITCH DETAIL.



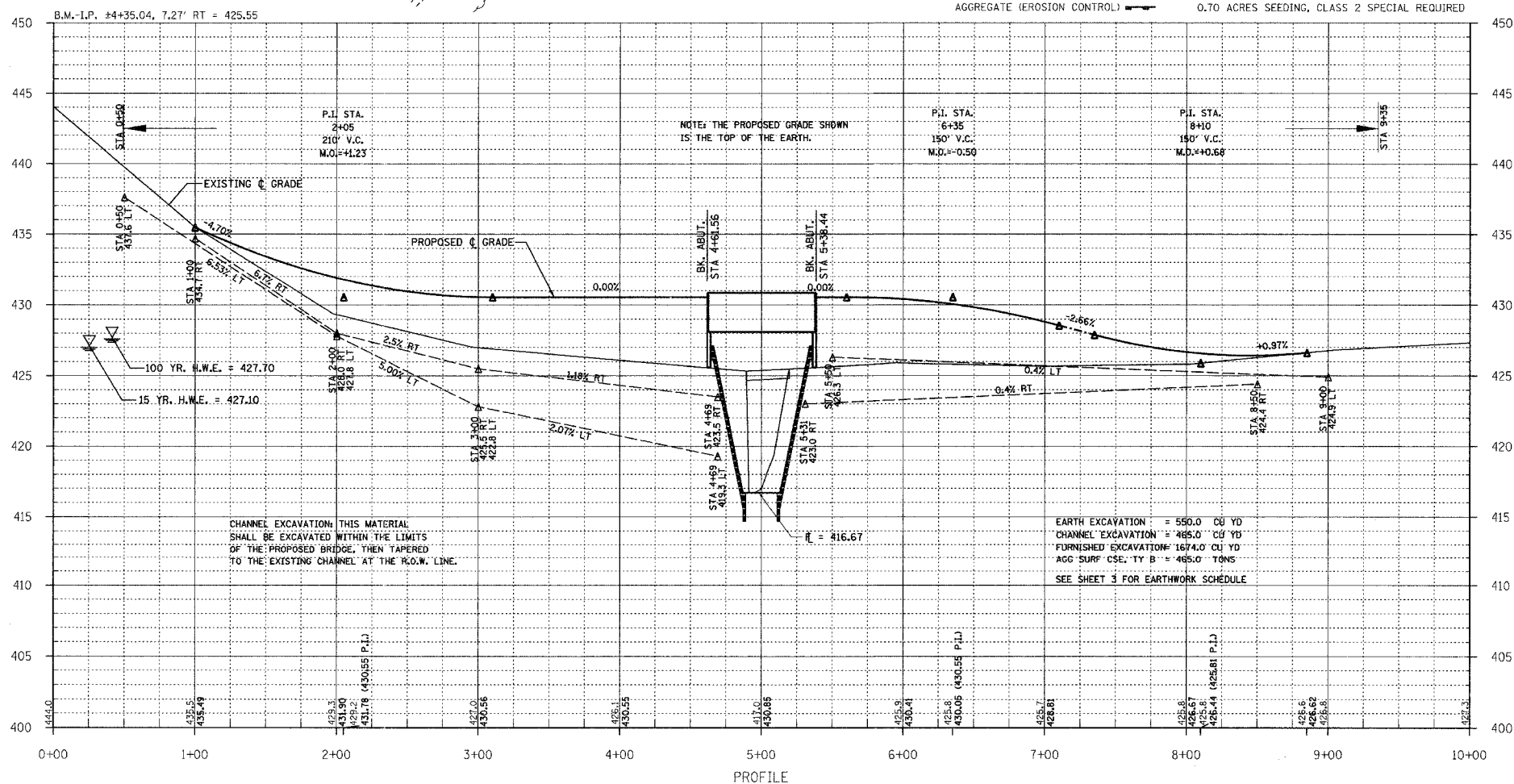
NOTE: FILL NEXT TO BRIDGE TO BE AGGREGATE SURFACE COURSE

EXISTING BRIDGE STA 5+04.21; STRUCTURE NUMBER: 096-3064
A 30' LONG BRIDGE WITH A 8" THICK CAST IN PLACE CONCRETE DECK ON STEEL BEAMS WITH CONCRETE WINGWALLS.

ONE (1) EACH REMOVAL OF EXISTING STRUCTURES ALLOWED IN THIS PROPOSAL.

PROPOSED STRUCTURE: NO. 096-3442, STA 5+00,
A 75' LONG SINGLE SPAN P.P.C.D.B. BRIDGE WITH
33" DEPTH BEAMS, SPILL THROUGH TYPE ABUTMENTS,
24' WIDTH, 30° LT FWD SKEW.

SEE SHEETS 5-12 FOR THE DESIGN AND BILL OF MATERIALS.



NOTE: THE PROPOSED GRADE SHOWN IS THE TOP OF THE EARTH.

EARTH EXCAVATION = 550.0 CU YD
CHANNEL EXCAVATION = 465.0 CU YD
FURNISHED EXCAVATION = 1674.0 CU YD
AGG SURF CSE. 1Y B = 465.0 TONS
SEE SHEET 3 FOR EARTHWORK SCHEDULE

CHANNEL EXCAVATION: THIS MATERIAL SHALL BE EXCAVATED WITHIN THE LIMITS OF THE PROPOSED BRIDGE, THEN TAPERED TO THE EXISTING CHANNEL AT THE R.O.W. LINE.

TEMPORARY DITCH CHECKS
AGGREGATE (EROSION CONTROL)

10.0 UNITS-TREE REMOVAL (6 TO 15 UNITS DIAMETER)
38.0 UNITS-TREE REMOVAL (OVER 15 UNITS DIAMETER)
0.70 ACRES SEEDING, CLASS 2 SPECIAL REQUIRED