

**GENERAL NOTES**

1. ALL MATERIALS DEEMED SALVAGEABLE BY THE ENGINEER SHALL REMAIN THE PROPERTY OF THE CITY OF EAST ST. LOUIS, IL. ALL OTHER MATERIALS SHALL BE DISPOSED OF BY THE CONTRACTOR, AT HIS OWN EXPENSE.
2. THE FOLLOWING ITEMS AND ESTIMATED QUANTITIES SHALL BE USED THROUGHOUT THIS PROJECT:

775 GALLONS, BITUMINOUS MATERIALS (PRIME COAT); 15 TON, AGGREGATE (PRIME COAT); 2 TON, MIXTURE FOR CRACKS, JOINTS AND FLANGEWAYS; 143 SQ. YD., TEMPORARY RAMP

3. THE FOLLOWING UTILITY COMPANIES MAY HAVE FACILITIES LOCATED WITHIN THE LIMITS OF CONSTRUCTION.

SBC MIDWEST  
203 GOETHE ST.  
COLLINSVILLE, IL. 62234  
(618) 482-6157

IL AMERICAN WATER CO.  
300 N. WATER WORKS DR.  
BELLEVILLE, IL 62223  
(618)239-3261

AMEREN IP  
1050 WEST BOULEVARD  
BELLEVILLE, IL 62222  
(618)236-6210

AMEREN UE  
500 EAST BROADWAY  
EAST ST. LOUIS, IL 62202  
(618)482-2238

CITY OF EAST ST. LOUIS  
PUBLIC WORKS DEPARTMENT  
613 N. 20TH ST.  
EAST ST. LOUIS, IL 62202  
(618)482-6843

4. THE FOLLOWING FACTORS WERE USED TO DETERMINE THE REQUIRED AMOUNT OF MATERIALS NEEDED.

|  |                          |
|--|--------------------------|
| BITUMINOUS CONC. SURFACE COURSE, SUPERPAVE, MIX "C", N70 | 112 LBS/SQ. YD. /IN. THK |
| LEVELING BINDER (MACHINE METHOD), SUPERPAVE N70          | 112 LBS/SQ. YD. /IN. THK |
| BITUMINOUS MATERIALS (PRIME COAT)                        | 0.10 GAL/SQ. YD.         |
| AGGREGATE (PRIME COAT)                                   | 4 LBS/SQ. YD.            |
| INCIDENTAL BITUMINOUS SURFACING, SUPERPAVE               | 112 LBS/SQ. YD. /IN. THK |

5. THE FOLLOWING MIXTURE REQUIREMENTS ARE APPLICABLE FOR THIS PROJECT:

| MIXTURE USE                         | SURFACE         | LEVELING BINDER | INCIDENTAL      |
|-------------------------------------|-----------------|-----------------|-----------------|
| PG                                  | PG 64-22        | PG 64-22        | PG 64-22        |
| RAP % (MAX)                         | 10%             | 15%             | 10%             |
| DESIGN AIR VOIDS                    | 4.0% @ Ndes =70 | 4.0% @ Ndes =70 | 4.0% @ Ndes =70 |
| MIX COMPOSITION (GRADATION MIXTURE) | IL 9.5          | IL 9.5          | IL 9.5          |
| FRICTION AGGREGATE                  | MIXTURE C       | MIXTURE C       | MIXTURE C       |

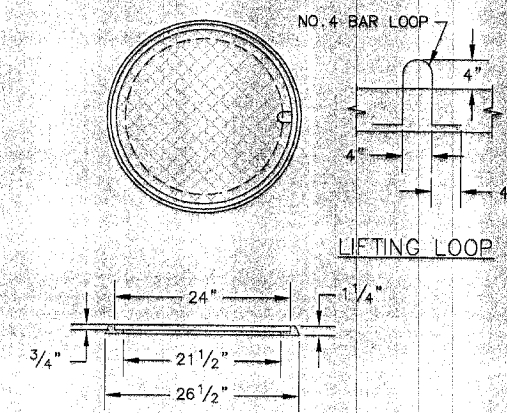
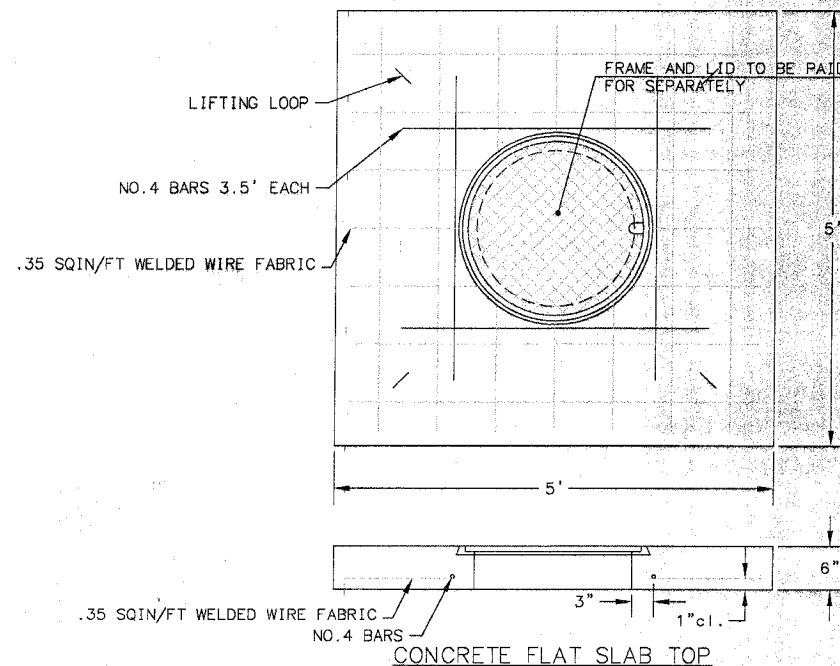
6. ALL RAISED REFLECTIVE PAVEMENT MARKERS SHALL BE TWO-WAY AMBER. INSTALLED AS SHOWN ON STD. 781001

| THERMOPLASTIC PAVEMENT MARKINGS           |                      |                |        |               |
|---|----------------------|----------------|--------|---------------|
| LOCATION                                  | DESCRIPTION          | WIDTH (INCHES) | COLOR  | LENGTH (FEET) |
| STA. 0+40.7 - STA. 21+36.6                | NO PASSING ZONE (SB) | 4              | YELLOW | 2096          |
| STA. 0+40.7 - STA. 21+36.6                | NO PASSING ZONE (NB) | 4              | YELLOW | 2096          |
| STA. 0+96 - STA. 6+73                     | RT EDGE LINE         | 4              | WHITE  | 593           |
| STA. 1+37 - STA. 6+44                     | LT EDGE LINE         | 4              | WHITE  | 523           |
| STA. 0+40.7                               | STOP BAR             | 24             | WHITE  | 22            |
| STA. 21+36.6                              | STOP BAR             | 24             | WHITE  | 18            |
| THERMOPLASTIC PAVEMENT MARKING - LINE 4"  |                      |                |        | 5308          |
| THERMOPLASTIC PAVEMENT MARKING - LINE 24" |                      |                |        | 40            |

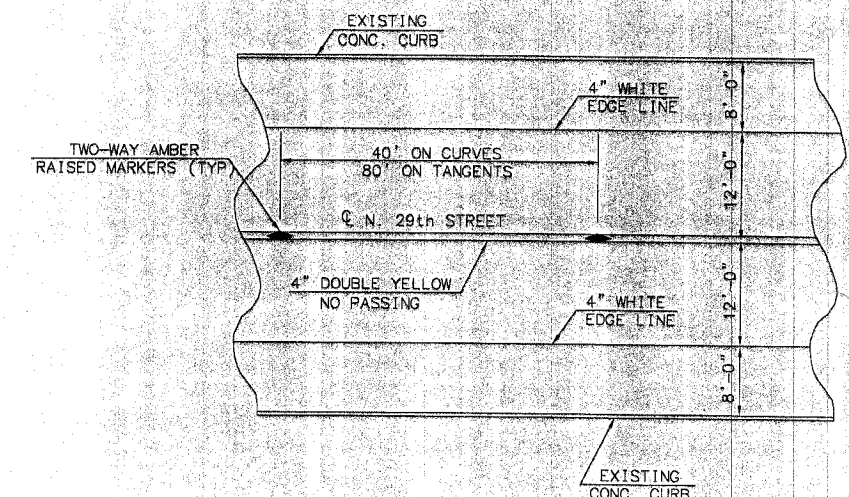
| RAISED REFLECTIVE PAVEMENT MARKERS |                |                        |
|------------------------------------|----------------|------------------------|
| LOCATION                           | SPACING (FOOT) | TWO - WAY AMBER (EACH) |
| STA. 0+40.7 - STA. 6+63.41         | 80             | 8                      |
| STA. 6+63.41 - STA. 10+07.61       | 40             | 9                      |
| STA. 10+07.61 - STA. 21+36.6       | 80             | 14                     |
| TOTAL                              |                | 31                     |

| INCIDENTAL BITUMINOUS SURFACE   |                |
|---------------------------------|----------------|
| LOCATION                        | QUANTITY (TON) |
| ALLEY - STA 10+07.27 RT         | 0.4            |
| ENTRANCE - STA 11+68.22 LT      | 1.1            |
| CLEVELAND AVE - STA 11+70.56 RT | 0.9            |
| ALLEY - STA 13+31.91 RT         | 0.4            |
| ENTRANCE - STA 14+69.22 LT      | 1.0            |
| ST LOUIS AVE - STA 15+05.44 RT  | 1.4            |
| ENTRANCE - STA 15+74.39 LT      | 0.6            |
| ALLEY - STA 16+77.44 RT         | 0.4            |
| ENTRANCE - STA 17+46.64 LT      | 0.1            |
| GATY AVE - STA 18+40.13 RT      | 0.8            |
| ENTRANCE - STA 18+40.85 LT      | 0.1            |
| ALLEY - STA 20+03.47 RT         | 0.3            |
| ENTRANCE - STA 20+81.83 LT      | 0.1            |
| ENTRANCE - STA 20+81.98 RT      | 0.1            |
| TOTAL                           | 8.0            |

|                    |                |                     |                 |
|--------------------|----------------|---------------------|-----------------|
| SECTION NO.        | COUNTY HIGHWAY | COUNTY              | SHEET OF SHEETS |
| 05-00215-00-RS     | N/A            | ST. CLAIR           | 2 OF 9          |
| ILLINOIS           |                | FEDERAL AID PROJECT |                 |
| CONTRACT NO. 97283 |                |                     |                 |



NOTE: ANGLE FRAME AND SOLID LID SHALL BE NEENAH FOUNDRY'S R-1799-K (LIGHT DUTY) OR EQUIVALENT.



TYPICAL APPLICATION OF THERMOPLASTIC MARKINGS AND RAISED REFLECTIVE MARKERS

N.T.S.

| INITIALS                     | DATE  |
|------------------------------|-------|
| DESIGNED R GEORGEN           | 8/05  |
| CHECKED                      |       |
| DRAWN DSENNE                 | 8/05  |
| CHECKED R GEORGEN            | 12/05 |
| PREPARED BY ST. CLAIR COUNTY |       |
| DRAWING FILE: GENNOTES       |       |