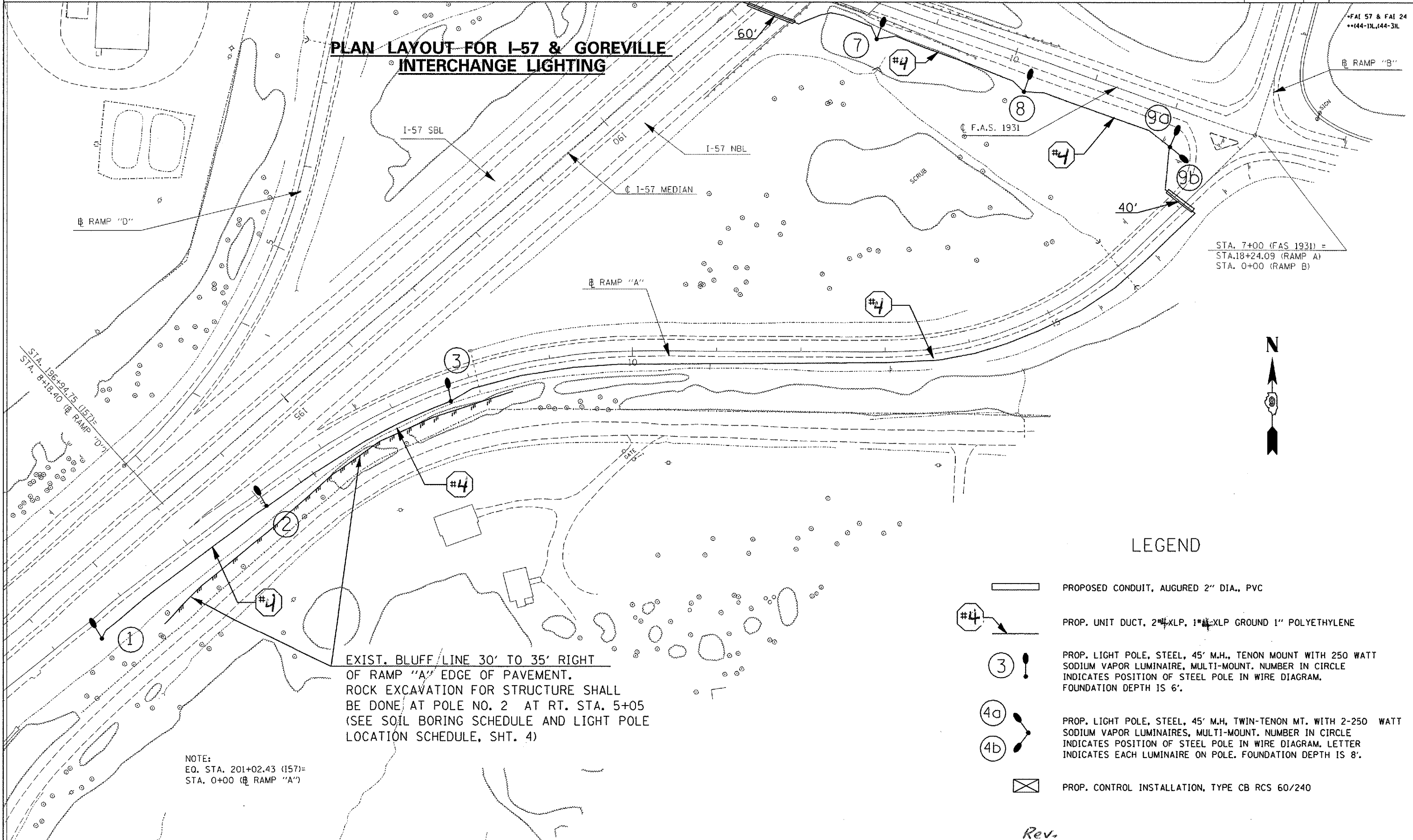


F.A.I. RTE.	SECTION	COUNTY	TOTAL SHEETS	SHEET NO.
---	---	JOHNSON	15	9
STA. _____ TO STA. _____		FED. ROAD DIST. NO. _____ ILLINOIS FED. AID PROJECT		

PLAN LAYOUT FOR I-57 & GOREVILLE INTERCHANGE LIGHTING



STA. 7+00 (FAS 1931) =
 STA. 18+24.09 (RAMP A)
 STA. 0+00 (RAMP B)

LEGEND

- PROPOSED CONDUIT, AUGURED 2" DIA., PVC
- PROP. UNIT DUCT, 2#4 XLP, 1#4 XLP GROUND 1" POLYETHYLENE
- PROP. LIGHT POLE, STEEL, 45' M.H., TENON MOUNT WITH 250 WATT SODIUM VAPOR LUMINAIRE, MULTI-MOUNT. NUMBER IN CIRCLE INDICATES POSITION OF STEEL POLE IN WIRE DIAGRAM. FOUNDATION DEPTH IS 6'.
- PROP. LIGHT POLE, STEEL, 45' M.H., TWIN-TENON MT. WITH 2-250 WATT SODIUM VAPOR LUMINAIRES, MULTI-MOUNT. NUMBER IN CIRCLE INDICATES POSITION OF STEEL POLE IN WIRE DIAGRAM. LETTER INDICATES EACH LUMINAIRE ON POLE. FOUNDATION DEPTH IS 8'.
- PROP. CONTROL INSTALLATION, TYPE CB RCS 60/240

EXIST. BLUFF LINE 30' TO 35' RIGHT OF RAMP "A" EDGE OF PAVEMENT. ROCK EXCAVATION FOR STRUCTURE SHALL BE DONE AT POLE NO. 2 AT RT. STA. 5+05 (SEE SOIL BORING SCHEDULE AND LIGHT POLE LOCATION SCHEDULE, SHT. 4)

NOTE:
 EQ. STA. 201+02.43 (I57) =
 STA. 0+00 (RAMP "A")

Rev.