

SECTION	COUNTY	TOTAL SHEETS	SHEET NO.
..	JOHNSON	15	11

STA. TO STA.
 FED. ROAD DIST. NO. ILLINOIS FED. AID PROJECT
 *FAI 57 & FAI 24
 **44-31L, 44-31L

PLAN LAYOUT FOR I-24 AND US 45 INTERCHANGE LIGHTING AT VIENNA

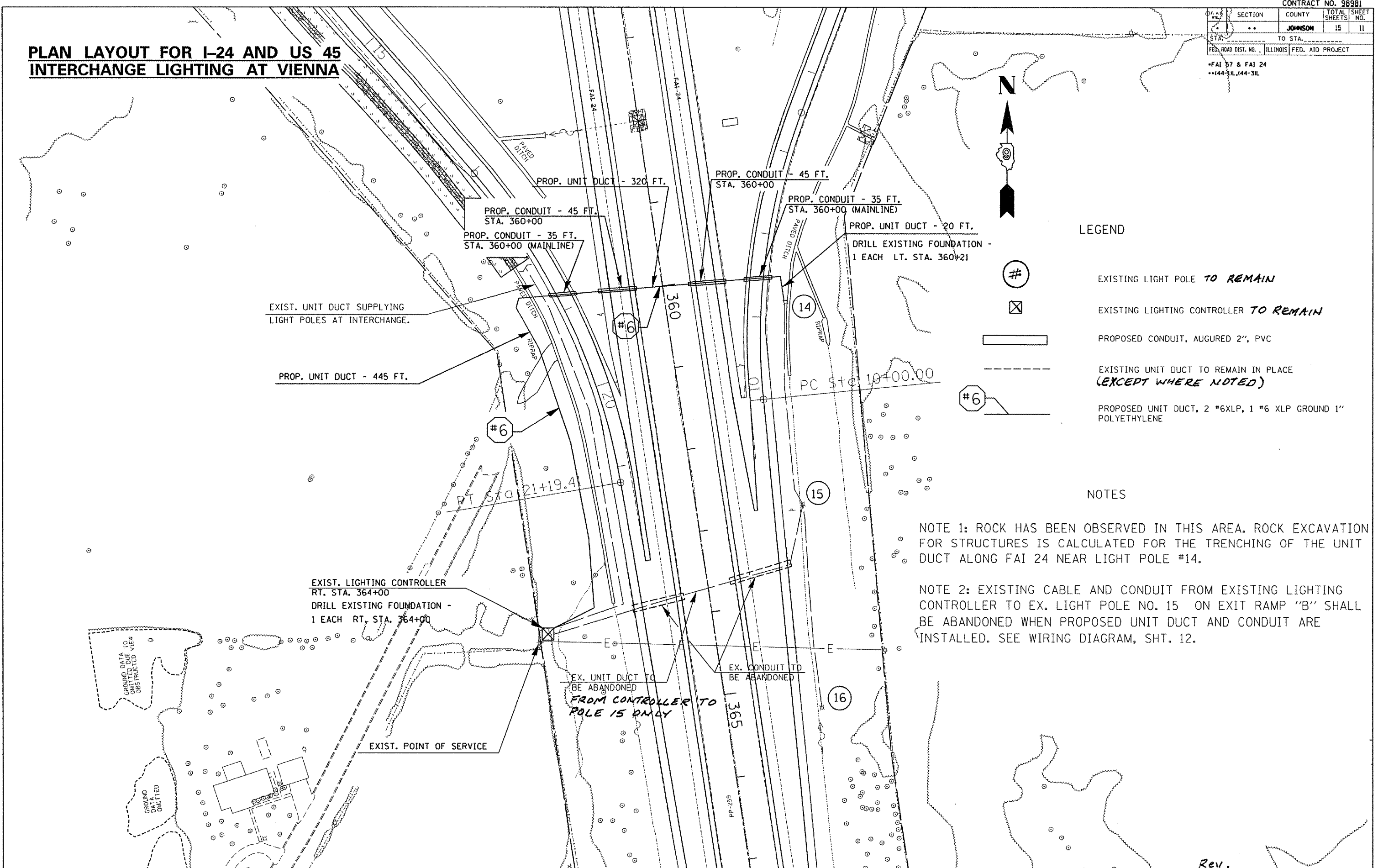


LEGEND

- # EXISTING LIGHT POLE *TO REMAIN*
- ⊠ EXISTING LIGHTING CONTROLLER *TO REMAIN*
- ▭ PROPOSED CONDUIT, AUGURED 2", PVC
- - - EXISTING UNIT DUCT TO REMAIN IN PLACE *(EXCEPT WHERE NOTED)*
- #6 PROPOSED UNIT DUCT, 2 *6XLP, 1 *6 XLP GROUND 1" POLYETHYLENE

NOTES

- NOTE 1: ROCK HAS BEEN OBSERVED IN THIS AREA. ROCK EXCAVATION FOR STRUCTURES IS CALCULATED FOR THE TRENCHING OF THE UNIT DUCT ALONG FAI 24 NEAR LIGHT POLE #14.
- NOTE 2: EXISTING CABLE AND CONDUIT FROM EXISTING LIGHTING CONTROLLER TO EX. LIGHT POLE NO. 15 ON EXIT RAMP "B" SHALL BE ABANDONED WHEN PROPOSED UNIT DUCT AND CONDUIT ARE INSTALLED. SEE WIRING DIAGRAM, SHT. 12.



PLOT DATE : 8/23/2006
 FILE NAME : c:\projects\98981\98981-1241\98981-1241.dwg
 PLOT SCALE : 1/8" = 1'-0"
 USER NAME : mccord

Rev.