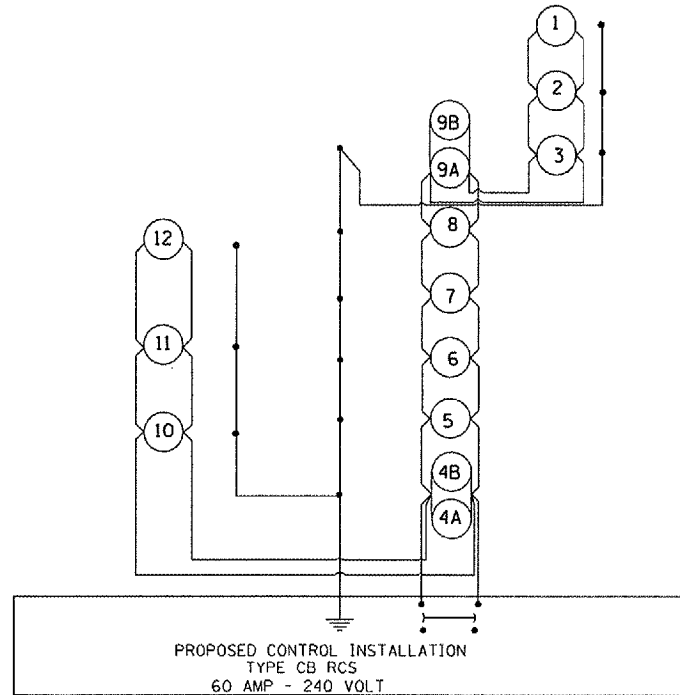


F.A.I. RTE.	SECTION	COUNTY	TOTAL SHEETS	SHEET NO.
..	..	JOHNSON	15	12
STA.	TO STA.			
FED. ROAD DIST. NO. ILLINOIS FED. AID PROJECT				

*FAI 57 & FAI 24
 **144-11L, 144-3L

WIRING DIAGRAM FOR I-57 & GOREVILLE INTERCHANGE LIGHTING



NOTES:

- FOR SIZE AND TYPE OF CABLE USED FOR LIGHTING INSTALLATION SEE CABLE DIAGRAM SHEET NO. 5-6.
- POWER TO CONTROL INSTALLATION IS SUPPLIED BY SOUTHERN ILLINOIS ELECTRIC CO-OP (SEE SPEC. PROV. FOR CONTACT INFORMATION).

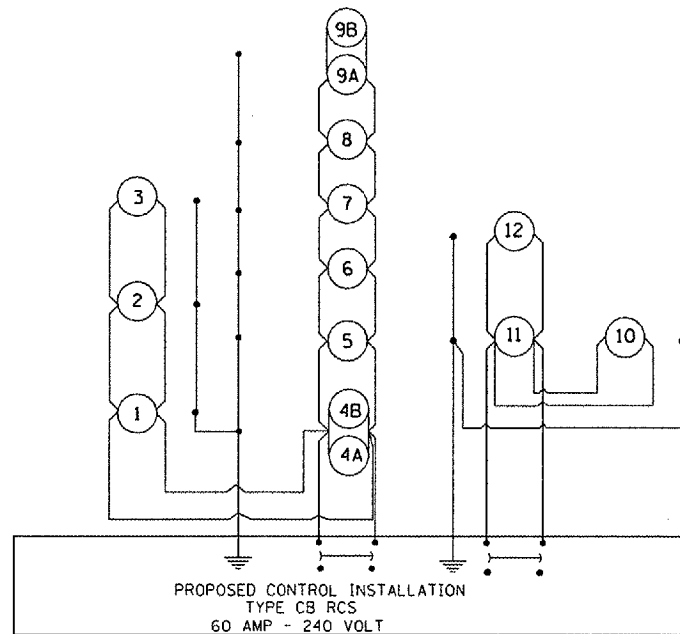
LEGEND FOR WIRING DIAGRAM

- ① NUMBER INDICATES POSITION OF POLE IN WIRING DIAGRAM.
- ④A NUMBER INDICATES POSITION OF POLE IN WIRING DIAGRAM. LETTER INDICATES TWIN-TENON MOUNTED LUMINAIRE.
- INDICATES PROPOSED GROUND AT LIGHT POLE AND CONTROL INSTALLATION.
- ⏚ INDICATES CONTINUOUS GROUND FROM CONTROL INSTALLATION.

REVISIONS	
DRAWN	7-27-93
REVISED	5-14-02
REVISED
REVISED

STD. 9-59

WIRING DIAGRAM FOR I-24 AND TUNNELL HILL INTERCHANGE LIGHTING



NOTES:

- FOR SIZE AND TYPE OF CABLE USED FOR LIGHTING INSTALLATION SEE CABLE DIAGRAM SHEET NO. 7-9.
- POWER TO CONTROL INSTALLATION IS SUPPLIED BY SOUTHEASTERN ILLINOIS ELECTRIC COOPERATIVE, INC. (SEE SPEC. PROV. FOR CONTACT INFORMATION).

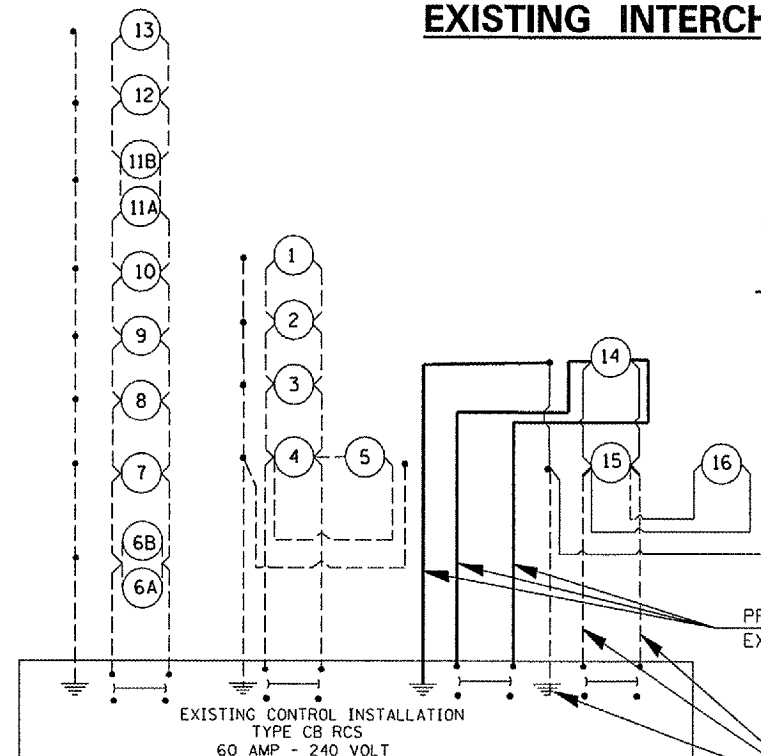
LEGEND FOR WIRING DIAGRAM

- ① NUMBER INDICATES POSITION OF POLE IN WIRING DIAGRAM.
- ④A NUMBER INDICATES POSITION OF POLE IN WIRING DIAGRAM. LETTER INDICATES TWIN-TENON MOUNTED LUMINAIRE.
- INDICATES PROPOSED GROUND AT LIGHT POLE AND CONTROL INSTALLATION.
- ⏚ INDICATES CONTINUOUS GROUND FROM CONTROL INSTALLATION.

REVISIONS	
DRAWN	7-27-93
REVISED	5-14-02
REVISED
REVISED

STD. 9-59

WIRING DIAGRAM FOR I-24 AND US 45 AT VIENNA EXISTING INTERCHANGE LIGHTING



LEGEND FOR WIRING DIAGRAM

- EXISTING UNIT DUCT TO EXISTING LIGHT POLES
- PROPOSED UNIT DUCT TO EXISTING LIGHT POLE 14 FROM EXISTING LIGHTING CONTROLLER
- EXISTING UNIT DUCT FROM POLE 14 THRU POLE 15 TO POLE 16 TO REMAIN
- ① NUMBER INDICATES POSITION OF POLE IN WIRING DIAGRAM.
- ④A NUMBER INDICATES POSITION OF POLE IN WIRING DIAGRAM. LETTER INDICATES TWIN-TENON MOUNTED LUMINAIRE.
- INDICATES PROPOSED GROUND AT LIGHT POLE AND CONTROL INSTALLATION.
- ⏚ INDICATES CONTINUOUS GROUND FROM CONTROL INSTALLATION.
- PROP. UNIT DUCT #6 TO REPLACE EXIST. UNIT DUCT
- EXIST. UNIT DUCT #6 TO BE ABANDONED FROM EX. CONTROLLER TO EX. LIGHT POLE #15.

Rev.

PLOT DATE = 8/22/2005
 FILE NAME = c:\projects\98981\98981-1241\98981-1241.dwg
 PLOT SCALE = 1/8"=1'-0"
 USER NAME = mcdonald