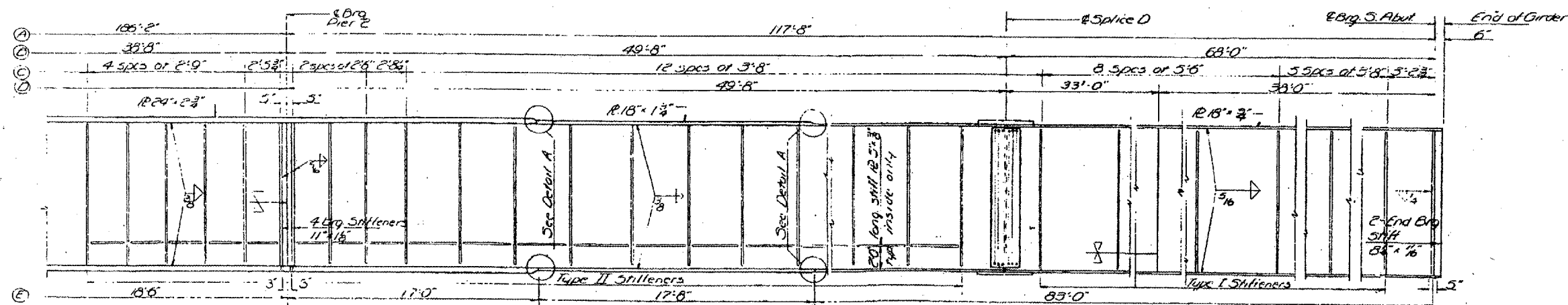
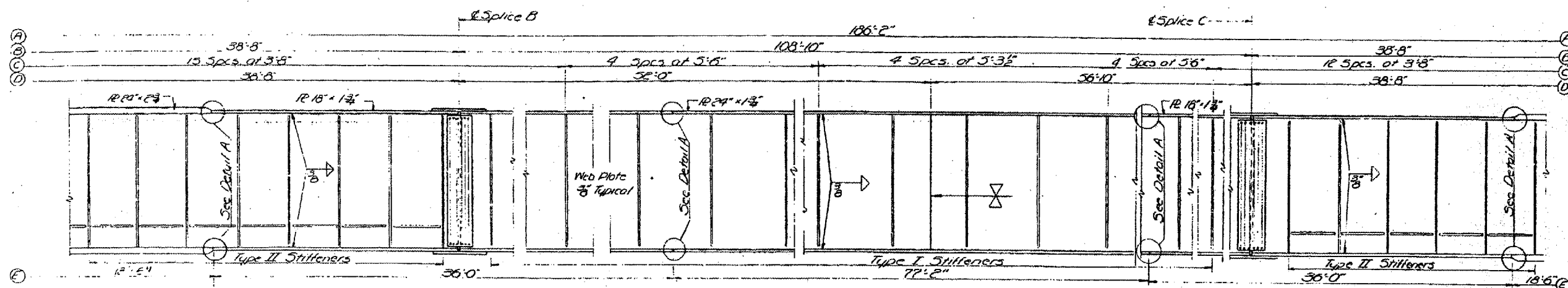


- (A) C-C Brqs.
- (B) Field Splice Locations
- (C) Stiffener Spacing
- (D) Shop Splice Locations
- (E) Flange Plate Lengths



Sept 23 1966
EXAMINED [Signature]
PASSED [Signature]
APPROVED [Signature]
DETAIL A
(thickness transition)

INSIDE ELEVATION GIRDER 1
Girder 2 similar by 180° rotation about vertical axis at mid-span 2 except as noted.

DETAIL A
(width transition)

BRIDGES NO. 1 AND NO. 2
002-0003 002-0004
FOR INFORMATION ONLY

GIRDER DETAILS
NORTH & SOUTH BOUND LANES
F&I RTE. 57 SEC. 02-1B
ALEXANDER COUNTY
STA. 943+72