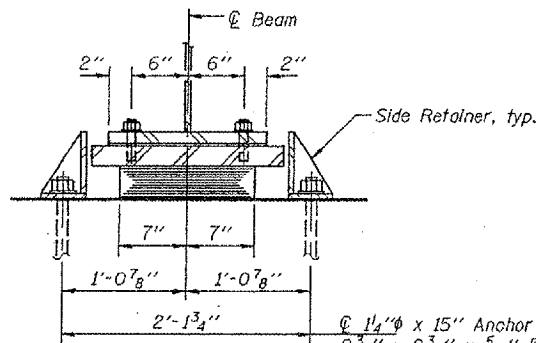
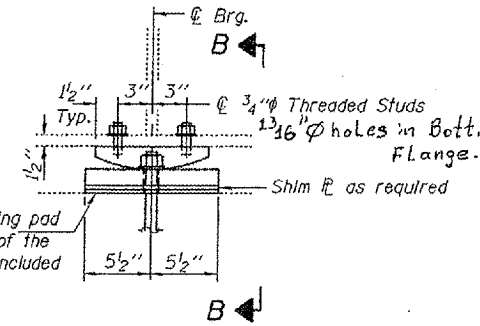


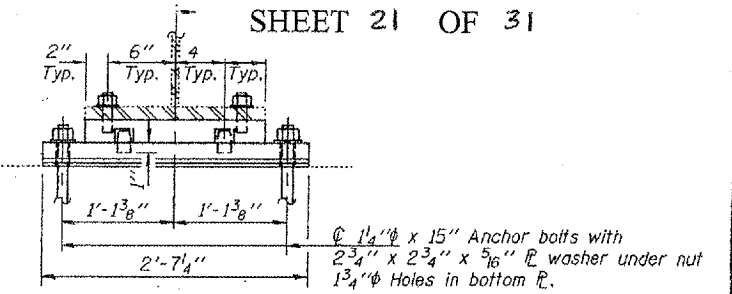
ELEVATION AT ABUT.



SECTION A-A

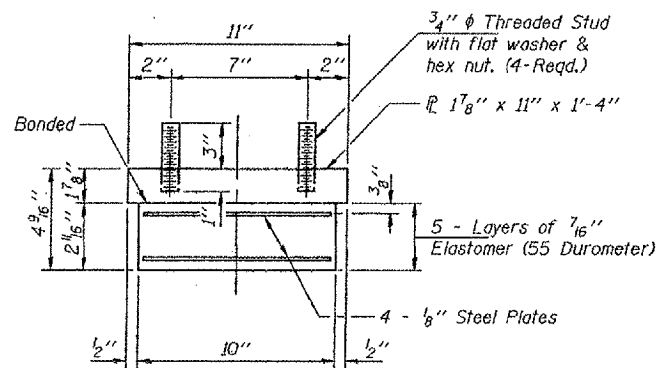


ELEVATION AT PIER



SECTION B-B

TYPE I ELASTOMERIC EXP. BRG.



BEARING ASSEMBLY

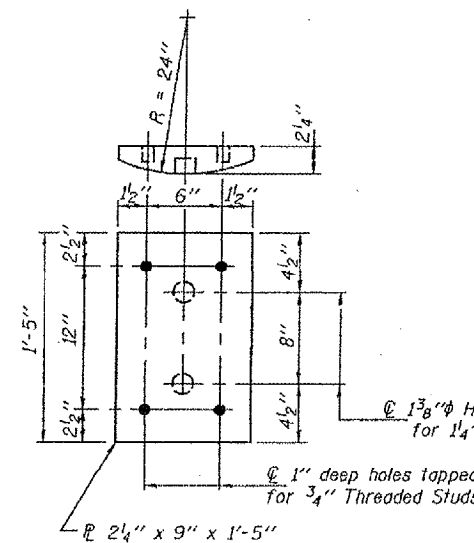
Note:
Shim plates shall not be placed under Bearing Assembly.

BEAM REACTIONS

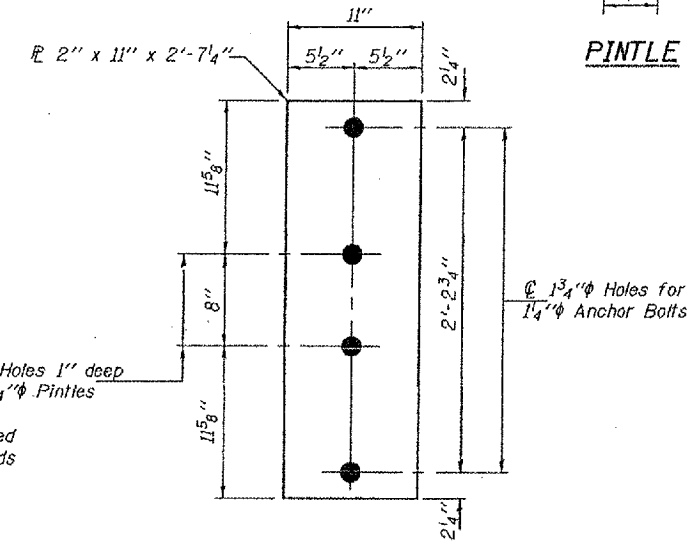
| | Abutments | Pier |
|---------------|-----------|-------|
| RF (K) | 47.4 | 164.7 |
| RL (K) | 49.8 | 72.4 |
| Imp. (K) | 11.6 | 16.8 |
| R (Total) (K) | 108.8 | 253.9 |

Notes:
Diaphragm removal and reinstallation may be required to facilitate drilling holes. Cost included with Furnishing and Erecting Structural Steel.
New side retainers, shim plates, connection bolts, and anchor bolts are included with Furnishing and Erecting Structural Steel.
See Sheet 3 of 5 for Anchor Bolt installation.
Prior to ordering any material, the Contractor shall verify in the field all bearing height and shim thickness dimensions.
Min. jack capacity = 60 Tons at abutments.
Min. jack capacity = 155 Tons at pier.

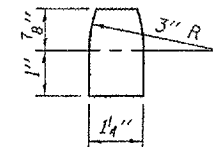
FIXED BEARING



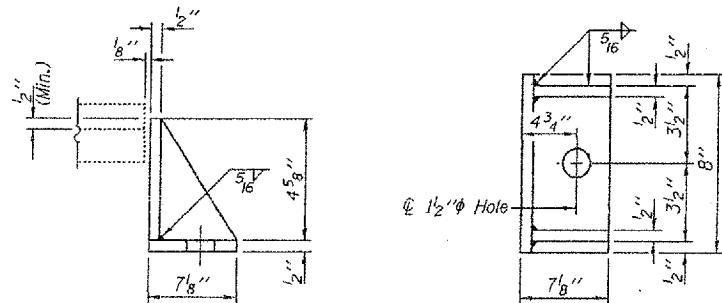
PLAN - TOP PLATE
FIXED BEARING



PLAN - BOTTOM PLATE
FIXED BEARING

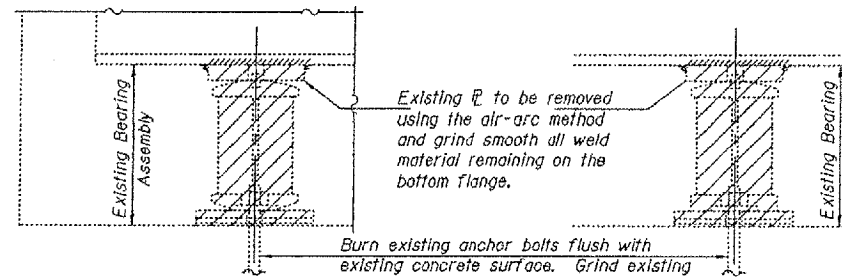


PINTLE



SIDE RETAINER

Equivalent rolled angle with stiffeners will be allowed in lieu of welded plates.



ABUTMENTS

PIER

EXISTING BEARING REMOVAL DETAIL

Cost included with Jacking and Cribbing.

BILL OF MATERIAL

| Item | Unit | Total |
|--|-------|-------|
| Elastomeric Bearing Assembly Type I | Each | 20 |
| Jacking and Cribbing | LS | 1 |
| Furnishing and Erecting Structural Steel | Pound | 4170 |

| | |
|----------|---------|
| DESIGNED | ATH |
| CHECKED | VHV |
| DRAWN | balva |
| CHECKED | ATH VHV |

APRIL 13, 2005
EXAMINED *John A. Morris*
ENGINEER OF STRUCTURAL SERVICES
PASSED *Ralph E. Anderson*
ENGINEER OF BRIDGES AND STRUCTURES

BRIDGE NO. 3
041-0069
FOR INFORMATION ONLY