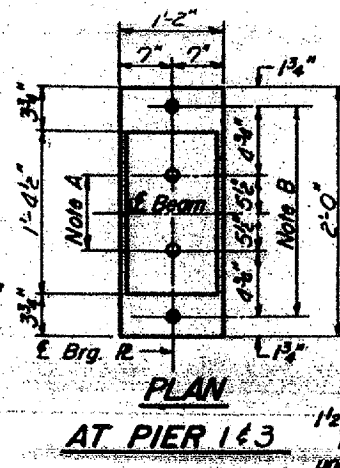
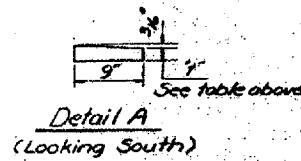
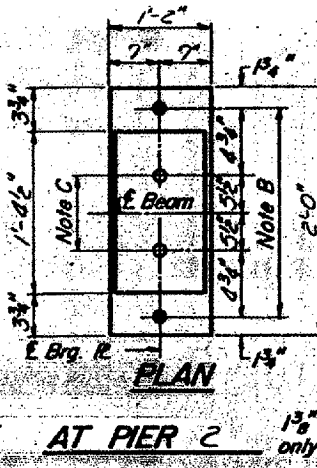


Abuts.	14"
Pier 1 & 3	1 1/8"
Pier 2	1 3/8"



NOTE B
1 1/2" Holes for 1" anchor bolts.
1 1/2" x 2 1/2" x 2 1/2" R. Washers
under nut.



NOTE C
1 1/2" Holes 1" deep in top R.
only for 1 1/4" pintles.

NOTES ON SETTING OF ANCHOR BOLTS AT EXP. BRGS.

- a) D* (Side of brg. away from fixed brg.)
D* = 1/8" per each 100' of expansion for every 15° fall below the normal temp. of 50°F.
- D** (Side of brg. toward fixed brg.)
D** = 1/8" per each 100' of expansion for every 15° rise above the normal temp. of 50°F.
- b) After beams have been erected and dimensions D* or D** determined, holes shall be drilled and anchor bolts shall be grouted in place. All fixed anchor bolts may be built into the masonry.

BEARING ASSEMBLY DETAILS

	Exp. Brg. E. Abut.	Exp. Brg. Pier 1				Exp. Splice 1		Exp. Brg. Pier 2		Exp. Splice 2		Exp. Splice 3		Exp. Brg. Pier 3				Exp. Brg. W. Abut.
	5 1/2" (Typ.)	108'-2 1/2"				26'-6"		106'-0"		26'-6"		53'-0"		108'-2 1/2"				5 1/2" (Typ.)
①	D	D ₁	D ₁	D ₁	D ₃	D ₁	D ₁	D ₁	D ₁	D ₃	D ₁	D ₁	D ₁	D ₃	D ₂	D ₂	D ₂	D
②	D	D ₁	D ₁	D ₁	D ₃	D ₁	D ₁	D ₁	D ₁	D ₃	D ₁	D ₁	D ₁	D ₃	D ₂	D ₂	D ₂	D
③	D	D ₁	D ₁	D ₁	D ₃	D ₁	D ₁	D ₁	D ₁	D ₃	D ₁	D ₁	D ₁	D ₃	D ₂	D ₂	D ₂	D
④	D	D ₁	D ₁	D ₁	D ₃	D ₁	D ₁	D ₁	D ₁	D ₃	D ₁	D ₁	D ₁	D ₃	D ₂	D ₂	D ₂	D
⑤	D	D ₁	D ₁	D ₁	D ₃	D ₁	D ₁	D ₁	D ₁	D ₃	D ₁	D ₁	D ₁	D ₃	D ₂	D ₂	D ₂	D
⑥		20'-5 1/8"	20'-5 1/8"	20'-5 1/8"	20'-5 1/8"	21'-2 1/2"	21'-2 1/2"	21'-2"	21'-2 1/2"	21'-2 1/2"	21'-2 1/2"	21'-2"	21'-2 1/2"	21'-2 1/2"	20'-5 1/8"	20'-5 1/8"	20'-5 1/8"	20'-5 1/8"
		81'-8 1/2"				106'-0"		106'-0"		106'-0"		81'-8 1/2"						

Work this sheet with sheet #7

DESIGNED Jon J. Edwards
CHECKED Stanley S. Lin
DRAWN P.G. Barnett
CHECKED Stanley S. Lin

EXAMINED
PASSED
APPROVED

FRAMING PLAN

BRIDGE NO. 5
091-0060
FOR INFORMATION ONLY