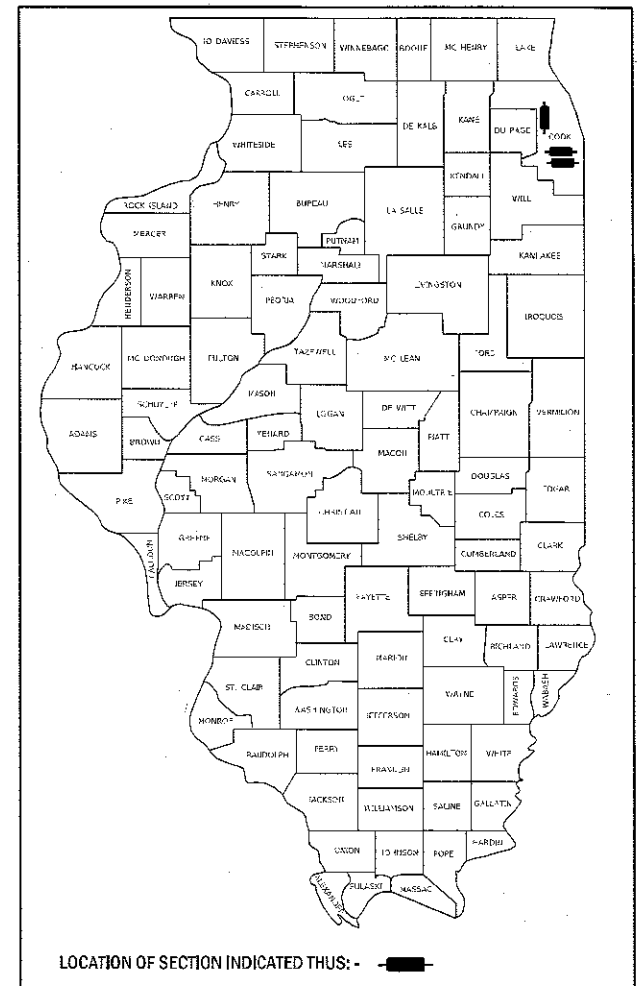


STATE OF ILLINOIS
DEPARTMENT OF TRANSPORTATION

F.A.P. RTE.	SECTION	COUNTY	TOTAL SHEETS	SHEET NO.
VAR	2017-025BP	COOK	23	1
		ILLINOIS	CONTRACT NO. 62F41	

D-91-292-17



FOR INDEX OF SHEETS, SEE SHEET NO.

PROPOSED HIGHWAY PLANS

VARIOUS ROUTES
 (1) F.A.P. ROUTE 397: IL 83 (SIBLEY BLVD.)
 OVER LITTLE CAL RIVER & UP RR
 (2) F.A.U. ROUTE 1584: 115TH ST. WB
 OVER I-94 (BISHOP FORD)
 SECTION: 2017-025BP
 BRIDGE PAINTING
 COOK COUNTY

C-91-292-17

PROJECT NHPP-7E2I(644)

IMPROVEMENTS ARE LOCATED IN THE VILLAGES
 OF DOLTON, SOUTH HOLLAND, AND THE CITY OF
 CHICAGO

SEE LOCATION MAPS
 SHEET 4

J.U.L.I.E.
 JOINT UTILITY LOCATION INFORMATION FOR EXCAVATION
 1-800-892-0123
 OR 811

C.U.A.N.
 CHICAGO UTILITY ALERT NETWORK
 (312) 744-7000

PROJECT ENGINEER: J. ALAIN MIDY (847) 221-3056
 PROJECT MANAGER: ISSAM RAYYAN (847) 705-4178

CONTRACT NO. 62F41

STATE OF ILLINOIS
 DEPARTMENT OF TRANSPORTATION

SUBMITTED August 15 20 17

Anthony J. Quigley / 083 REGIONAL ENGINEER

Oct 13 20 17

Maureen M. Addis PE/ ENGINEER OF DESIGN AND ENVIRONMENT

Oct 13 20 17

[Signature] 2 DIRECTOR OF PROGRAM DEVELOPMENT

PRINTED BY THE AUTHORITY
 OF THE STATE OF ILLINOIS

INDEX OF SHEETS

1. TITLE SHEET
2. INDEX OF SHEETS, STATE STANDARDS, GENERAL NOTES AND GENERAL PAINT NOTES
3. SUMMARY OF QUANTITIES
4. LOCATION MAPS
- 5-8. EXISTING BRIDGE PLANS (SN 016-0954)
- 9-15. EXISTING BRIDGE PLANS (SN 016-0955)
- 16-20. EXISTING BRIDGE PLANS (SN 016-2043)
21. TRAFFIC CONTROL AND PROTECTION FOR SIDE ROADS, INTERSECTIONS, AND DRIVEWAYS (TC-10)
22. TRAFFIC CONTROL AND PROTECTION AT TURN BAYS (TO REMAIN OPEN TO TRAFFIC) (TC-14)
23. ARTERIAL ROAD INFORMATION SIGN (TC-22)

STATE STANDARDS

STANDARD NO.	DESCRIPTION
701106-02	OFF-ROAD OPERATIONS, MULTILANE, MORE THAN 15' AWAY
701400-09	APPROACH TO LANE CLOSURE, FREEWAY/EXPRESSWAY
701401-10	LANE CLOSURE, FREEWAY/EXPRESSWAY
701427-05	LANE CLOSURE, MULTILANE, INTERMITTENT OR MOVING OPERATION, FOR SPEEDS < 40MPH
701446-08	TWO LANE CLOSURE, FREEWAY/EXPRESSWAY
701428-01	TRAFFIC CONTROL, SETUP AND REMOVAL, FREEWAY/EXPRESSWAY
701602-08	URBAN LANE CLOSURE, MULTILANE, 2W WITH BIDIRECTIONAL LEFT TURN LANE
701606-10	URBAN LANE CLOSURE, MULTILANE, 2W WITH MOUNTABLE MEDIAN
701801-06	SIDEWALK, CORNER OR CROSSWALK CLOSURE
701901-06	TRAFFIC CONTROL DEVICES

GENERAL NOTES

1. BEFORE STARTING ANY EXCAVATION, THE CONTRACTOR SHALL CALL "J.U.L.I.E." (800) 892-0123 OR 811 FOR FIELD LOCATIONS OF BURIED ELECTRIC, TELEPHONE AND GAS UTILITIES. (48 HOUR NOTIFICATION IS REQUIRED).
2. BEFORE STARTING ANY EXCAVATION, THE CONTRACTOR SHALL CALL "C.U.A.N." (CHICAGO UTILITY ALERT NETWORK) AT (312) 744-7000 FOR FIELD LOCATIONS OF BURIED ELECTRIC, TELEPHONE AND GAS UTILITIES. (48 HOUR NOTIFICATION IS REQUIRED).
3. THE CONTRACTOR SHALL COORDINATE CONSTRUCTION ACTIVITIES WITH UTILITY COMPANIES, THE VILLAGES OF DOLTON, SOUTH HOLLAND, AND THE CITY OF CHICAGO.
4. IT SHALL BE THE CONTRACTOR'S RESPONSIBILITY TO PROTECT AND PRESERVE THE EXISTING BRIDGE LIGHTING AT ANY LOCATIONS THAT LIGHTING IS ENCOUNTERED ADJACENT TO AN AREA TO BE CLEANED AND PAINTED.
5. THE CONTRACTOR WILL NOT BE ALLOWED TO SET UP A YARD OR FIELD OFFICE ON STATE PROPERTY WITHOUT WRITTEN PERMISSION FROM THE DEPARTMENT.
6. THESE PLANS HAVE BEEN PREPARED FROM NOTES RECEIVED FROM THE BUREAU OF MAINTENANCE BRIDGE INSPECTORS.
7. THE CONTRACTOR SHALL CONTACT THE DISTRICT ONE TRAFFIC CONTROL SUPERVISOR AT (847) 705-4470 FOR ARTERIALS AND (847) 705-4151 FOR EXPRESSWAYS A MINIMUM OF 72 HOURS IN ADVANCE OF BEGINNING WORK.
8. TREE CLEARING FOR PAINTING ACCESS SHALL BE DONE ACCORDING TO ARTICLE 201.10
9. THE CONTRACTOR SHALL BE REQUIRED TO PROVIDE ACCESS TO ABUTTING PROPERTY AT ALL TIMES DURING THE CONSTRUCTION OF THIS PROJECT.
10. THE "ARTERIAL ROAD INFORMATION SIGN (TC-22)" IS APPLICABLE ONLY TO ARTERIAL ROADS AND SHALL NOT BE APPLIED TO EXPRESSWAYS.
11. PLAN DIMENSIONS AND DETAILS RELATIVE TO EXISTING PLANS ARE SUBJECT TO NOMINAL CONSTRUCTION VARIATIONS. THE CONTRACTOR SHALL FIELD VERIFY EXISTING DIMENSIONS AND DETAILS AFFECTING NEW CONSTRUCTION AND MAKE NECESSARY APPROVED ADJUSTMENTS PRIOR TO CONSTRUCTION OR ORDERING OF MATERIALS. SUCH VARIATIONS SHALL NOT BE CAUSE FOR ADDITIONAL COMPENSATION FOR A CHANGE IN SCOPE OF THE WORK, HOWEVER, THE CONTRACTOR WILL BE PAID FOR THE QUANTITY ACTUALLY FURNISHED BASED AT THE UNIT PRICE BID FOR THE WORK.
12. DO NOT SCALE PLANS FOR CONSTRUCTION DIMENSIONS.

GENERAL PAINT NOTES

SN 016-0954 & SN 016-0955

CLEANING AND PAINTING OF THE EXISTING STRUCTURAL STEEL SHALL BE AS SPECIFIED IN THE SPECIAL PROVISION FOR "CLEANING AND PAINTING EXISTING STEEL STRUCTURES".

THE AREAS DESIGNATED SHALL BE CLEANED PER NEAR WHITE BLAST CLEANING - SSPC-SP10. THE AREAS DESIGNATED SHALL BE PAINTED ACCORDING TO THE REQUIREMENTS OF PAINT SYSTEM 1 -OZ/E/U. THE COLOR OF THE FINAL FINISH COAT FOR ALL INTERIOR STEEL SURFACES SHALL BE GRAY, MUNSELL NO 5B 7/1. THE COLOR OF THE FINAL FINISH COAT FOR EXTERIOR AND BOTTOM FLANGE OF THE FASCIA BEAMS SHALL BE REDDISH BROWN, MUNSELL NO 2.5YR 3/4.

A MINIMUM OF TWO (2) AIR MONITORS AT EACH LOCATION WILL BE REQUIRED TO MONITOR ABRASIVE BLASTING OPERATIONS. SEE SPECIAL PROVISIONS FOR "CONTAINMENT AND DISPOSAL OF LEAD PAINT CLEANING RESIDUES."

ALL BEAMS INCLUDING FASCIAS, BEARINGS AND OTHER STRUCTURAL STEEL WITHIN 7.5 FT (MEASURED ALONG THE BEAM) OF EITHER SIDE OF ALL DECK JOINTS SHALL BE CLEANED PER NEAR WHITE BLAST CLEANING - SSPC-SP10. THESE AREAS SHALL BE PAINTED ACCORDING TO THE REQUIREMENTS OF PAINT SYSTEM 1 -OZ/E/U. THE COLOR OF THE FINAL FINISH COAT FOR ALL INTERIOR STEEL SURFACES SHALL BE GRAY, MUNSELL NO 5B 7/1. THE COLOR OF THE FINAL FINISH COAT FOR THE EXTERIOR AND BOTTOM FLANGE OF THE FASCIA BEAMS SHALL BE REDDISH BROWN, MUNSELL NO 2.5YR 3/4.

NOTE: REMOVAL OF ANY EXISTING FORMWORK LOCATED AT THE ABUTMENT OF SN 016-0954 SHALL BE INCLUDED AS PART OF "CLEANING & PAINTING STEEL BRIDGE"

SN 016-2043

CLEANING AND PAINTING OF THE EXISTING STRUCTURAL STEEL SHALL BE AS SPECIFIED IN THE SPECIAL PROVISION FOR "CLEANING AND PAINTING EXISTING STEEL STRUCTURES".

A MINIMUM OF ONE (1) AIR MONITOR WILL BE REQUIRED TO MONITOR ABRASIVE BLASTING OPERATIONS. SEE SPECIAL PROVISIONS FOR "CONTAINMENT AND DISPOSAL OF LEAD PAINT CLEANING RESIDUES."

ALL ITEMS (SUCH AS, BUT NOT LIMITED TO: CONDUITS, BRACKETS AND DECK DRAINS) ATTACHED TO OUTSIDE OF THE FASCIA BEAMS SHOULD BE CLEANED AND PAINTED.

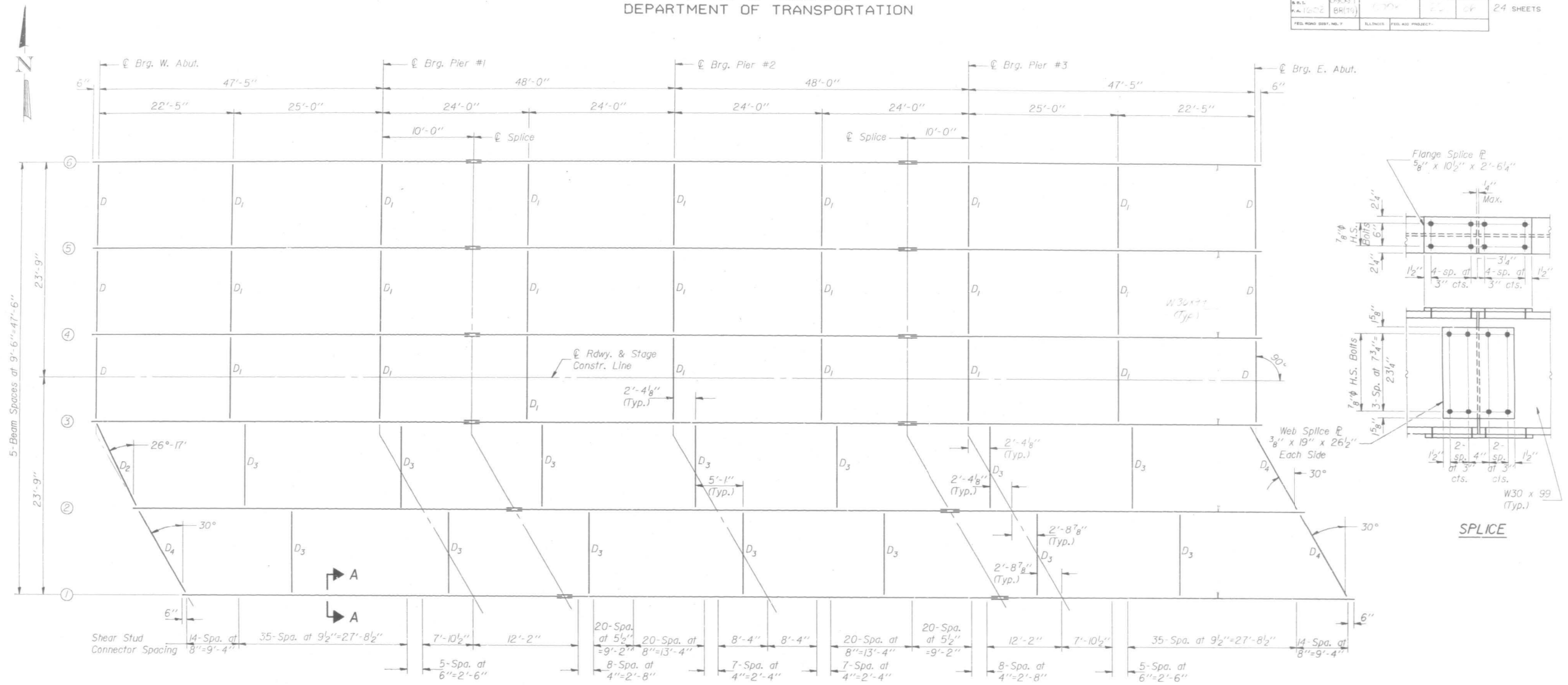
ALL BEAMS, BEARINGS AND OTHER STRUCTURAL STEEL SHALL BE CLEANED PER NEAR WHITE BLAST CLEANING - SSPC-SP10. THESE AREAS SHALL BE PAINTED ACCORDING TO THE REQUIREMENTS OF PAINT SYSTEM 1 -OZ/E/U. THE COLOR OF THE FINAL FINISH COAT FOR ALL INTERIOR STEEL SURFACES SHALL BE GRAY, MUNSELL NO 5B 7/1. THE COLOR OF THE FINAL FINISH COAT FOR THE EXTERIOR AND BOTTOM FLANGE OF THE FASCIA BEAMS SHALL BE REDDISH BROWN, MUNSELL NO 2.5YR 3/4.

FILE NAME =	USER NAME = sainsvitch	DESIGNED -	REVISED -	STATE OF ILLINOIS DEPARTMENT OF TRANSPORTATION	INDEX OF SHEETS, STATE STANDARDS, GENERAL NOTES AND GENERAL PAINT NOTES	F.A.P. RTE.	SECTION	COUNTY	TOTAL SHEETS	SHEET NO.
per\\vl0848IDINTEG...illinois.gov\FWIDOT\Documents\DOT Offices\District 1\Projects\0122\Drawings\Design\0129217-eh-plan.dgn		CHECKED -	REVISED -			VAR.	2017-025BP	COOK	23	2
Default	PLOT SCALE = 100.0000' / 1"	DATE -	REVISED -			CONTRACT NO. 62F41				
	PLOT DATE = 8/24/2017					SCALE:	SHEET OF	SHEETS	STA. TO STA.	[ILLINOIS] FED. AID PROJECT

FOR INFORMATION ONLY

STATE OF ILLINOIS
DEPARTMENT OF TRANSPORTATION

ROUTE NO.	SECTION	COUNTY	TOTAL SHEETS	SHEET NO.
F.A.U. RT. 1602	BR179	COOK	24	16
SHEET NO. 16 24 SHEETS				



Notes: The Top of Beam Elevations and Moment and Reaction Tables are on sheet #18.
For diaphragm details, see sheet #17

STRUCTURAL STEEL
F.A.U. RT. 1602 SEC. 0909.IBR(79)
COOK COUNTY
STA. 129+41.00

MODEL: Default
FILE: \\hpc\p\1108\BEBID\ITC\Illinois\gov\PIV\DOT\Documents\129217\CADD\BEBID\Design\129217-shr-plb\sn.dgn

USER NAME = saintvlch	DESIGNED -	REVISED -
	DRAWN -	REVISED -
PLOT SCALE = 100.0000' / in.	CHECKED -	REVISED -
PLOT DATE = 8/22/2017	DATE -	REVISED -

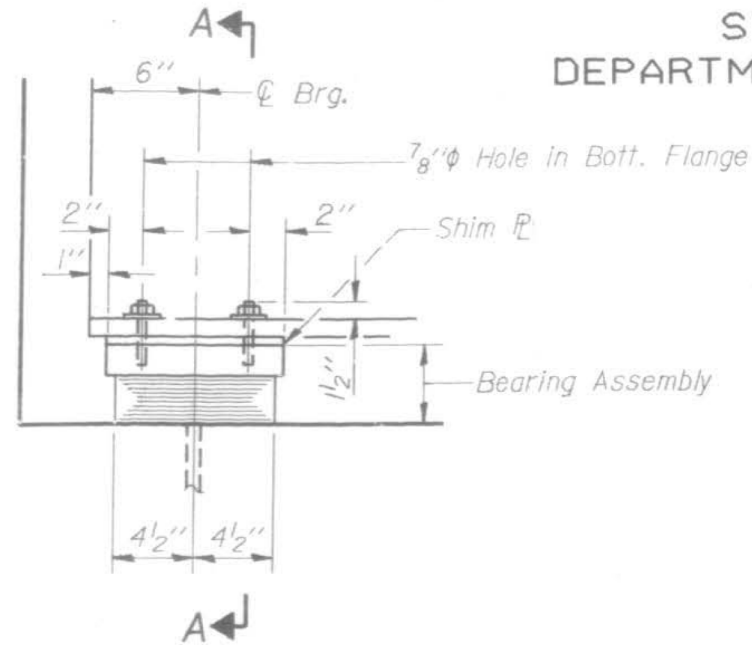
**STATE OF ILLINOIS
DEPARTMENT OF TRANSPORTATION**

SN 016-0954	
STRUCTURAL STEEL FRAMING PLAN	
SCALE:	SHEET OF SHEETS STA. TO STA.

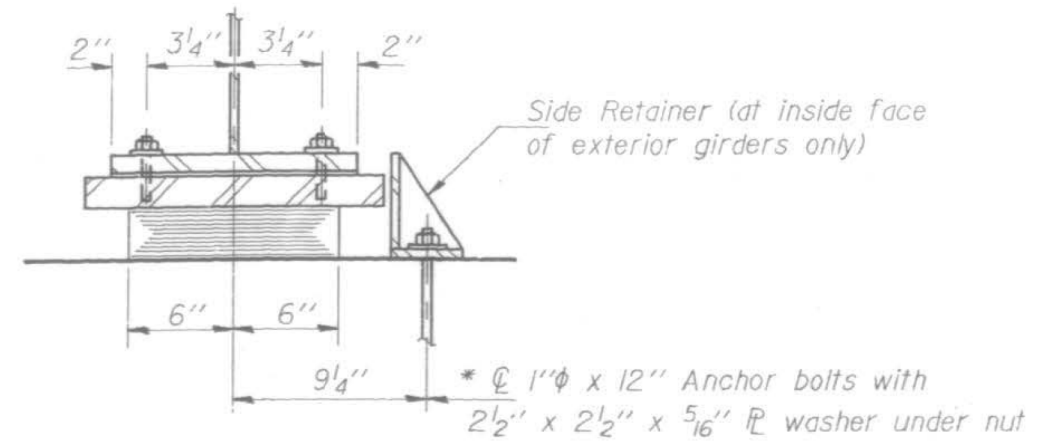
F.A.P. RTE.	SECTION	COUNTY	TOTAL SHEETS	SHEET NO.
VAR	2017-025BP	COOK	23	6
CONTRACT NO. 62F41				
ILLINOIS FED. AID PROJECT				

FOR INFORMATION ONLY

STATE OF ILLINOIS
DEPARTMENT OF TRANSPORTATION

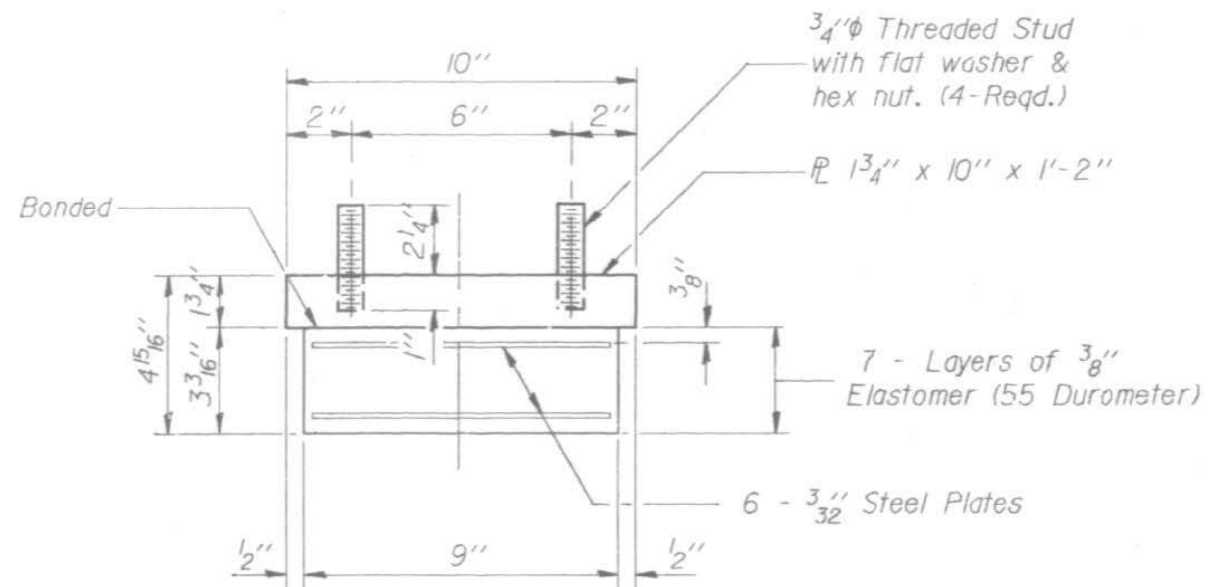


ELEVATION



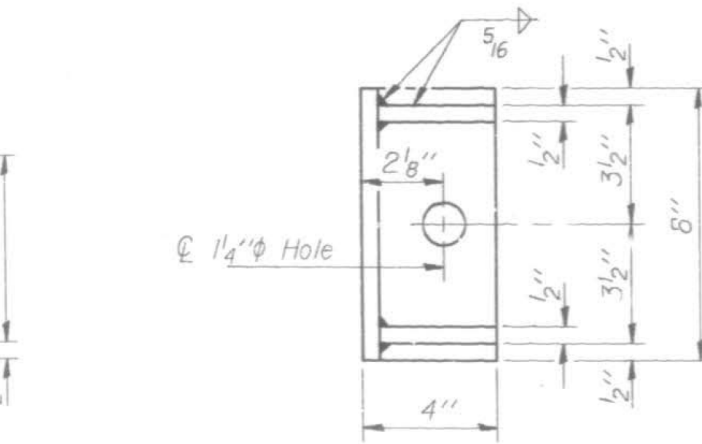
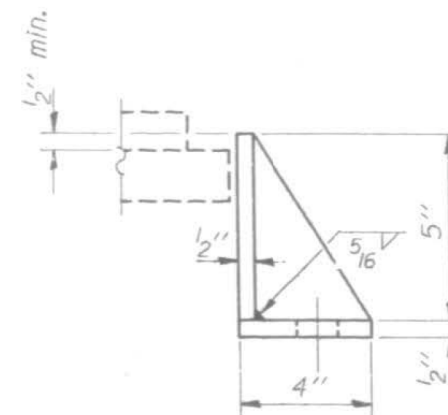
SECTION A-A

TYPE I ELASTOMERIC EXP. BRG. AT ABUT'S.



BEARING ASSEMBLY AT ABUT'S.

Note: Shim plates shall not be placed under Bearing Assembly.



SIDE RETAINER

STATE OF ILLINOIS
DEPARTMENT OF TRANSPORTATION

SN 016-0954
STRUCTURAL STEEL BEARINGS

F.A.P. RTE.	SECTION	COUNTY	TOTAL SHEETS	SHEET NO.
VAR	2017-025BP	COOK	23	7
			CONTRACT NO. 62F41	

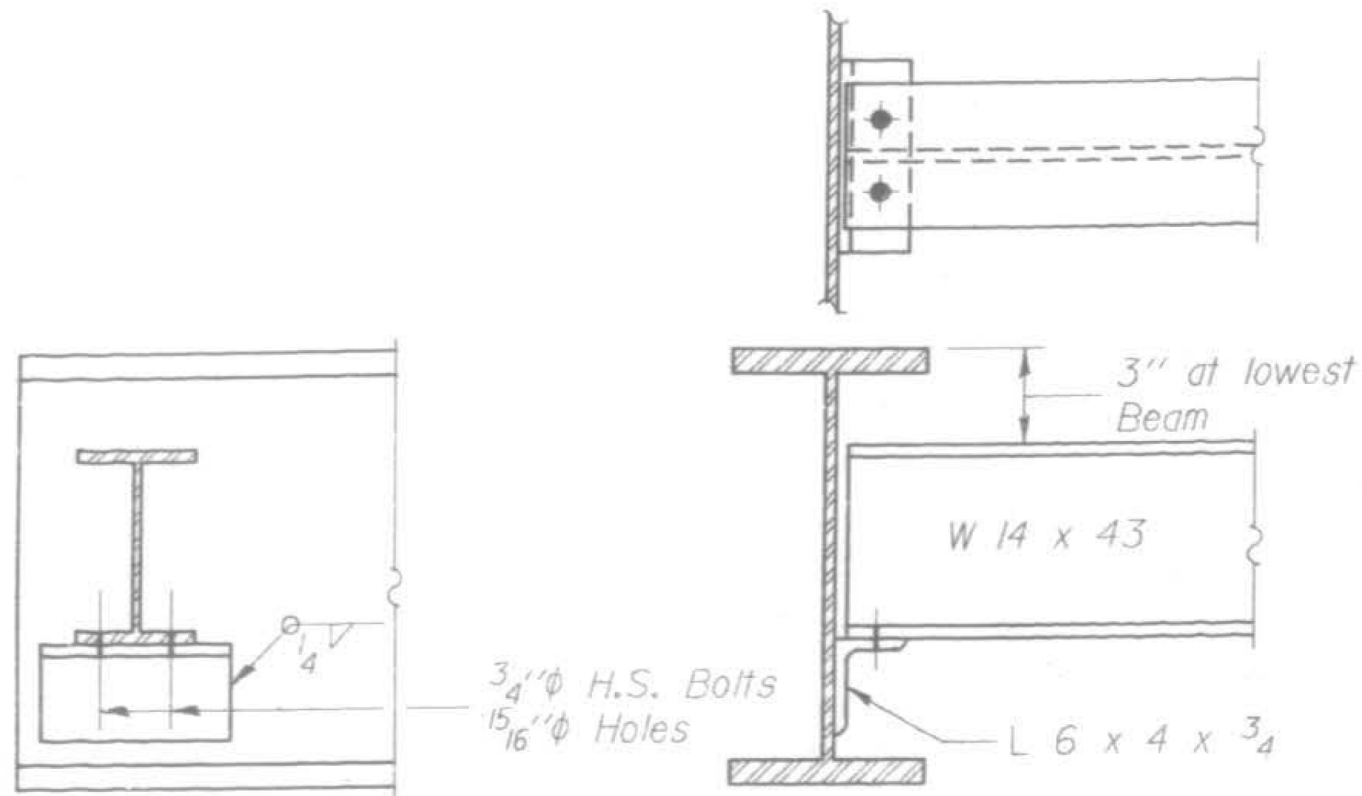
SCALE: SHEET OF SHEETS STA. TO STA.

ILLINOIS FED. AID PROJECT

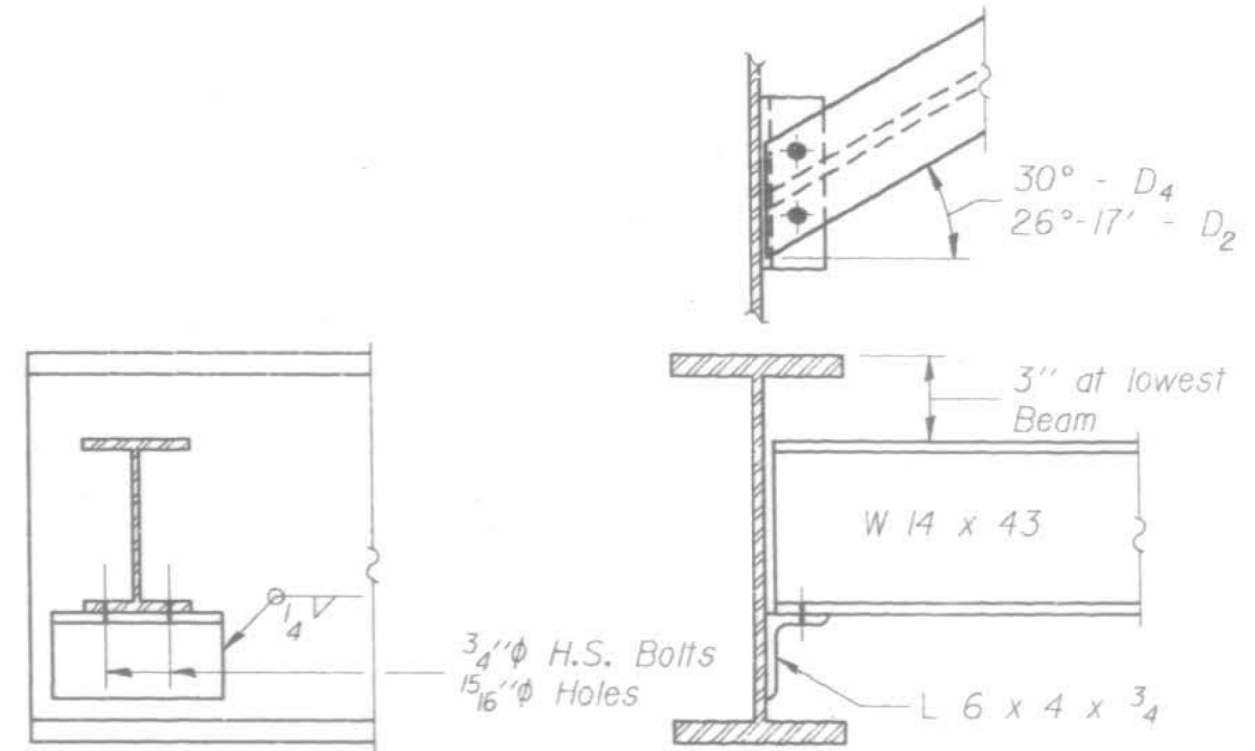
FOR INFORMATION ONLY

ROUTE NO.	SECTION	COUNTY	TOTAL SHEETS	SHEET NO.
S.B.L.	09091	COOK	125	67
P.A. 1602	BR(79)			
FED. ROAD DIST. NO. 7	ILLINOIS	FED. AID PROJECT-		

SHEET NO. 17
24 SHEETS



DIAPHRAGM D
6 Required



DIAPHRAGM D₂ or D₄
3 Required - D₄
1 Required - D₂

Note: Two hardened washers shall be required over all 3/4" holes. All contact surfaces of joints shall be free of paint or looper. Diaphragms under Stage Construction Bay shall be temporarily supported during Stage Construction. The Design Moment and Reaction Tables are on sheet #18.

STRUCTURAL STEEL
F.A.U. RT. 1602 SEC. 0909.IBR(79)
COOK COUNTY
STA. 129+41.00

MODEL: Default
FILE: \\nas01.cba.baeidn.net\illinois\paw\paw\DOT\Documents\DOT_Offices\DI\rt17\Projects\0129217\CADD\data\Design\0129217_sbr-plb\as.dgn

USER NAME = saintvlch	DESIGNED -	REVISED -
PLOT SCALE = 100.0000' / in.	DRAWN -	REVISED -
PLOT DATE = 8/22/2017	CHECKED -	REVISED -
	DATE -	REVISED -

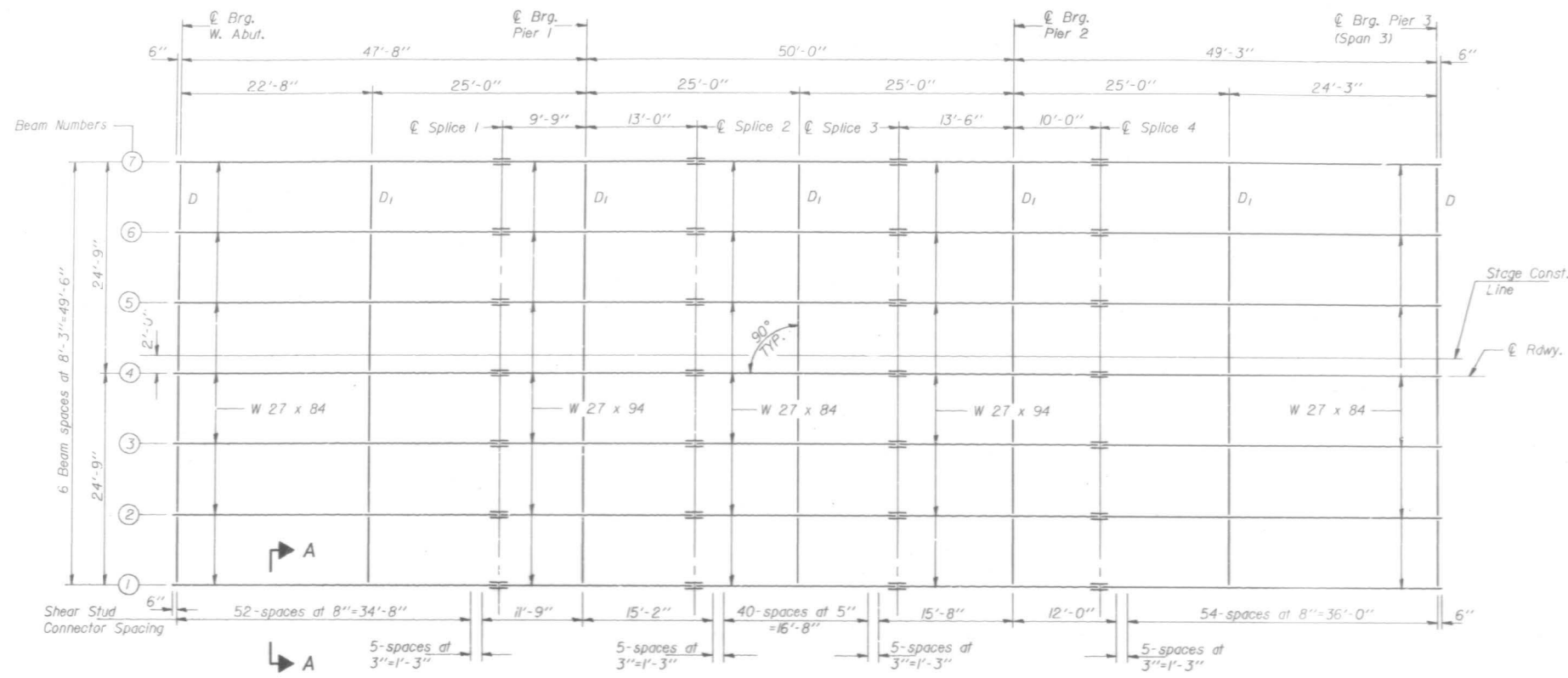
STATE OF ILLINOIS
DEPARTMENT OF TRANSPORTATION

SN 016-0954			
STRUCTURAL STEEL & DIAPHRAGM			
SCALE:	SHEET	OF SHEETS	STA. TO STA.

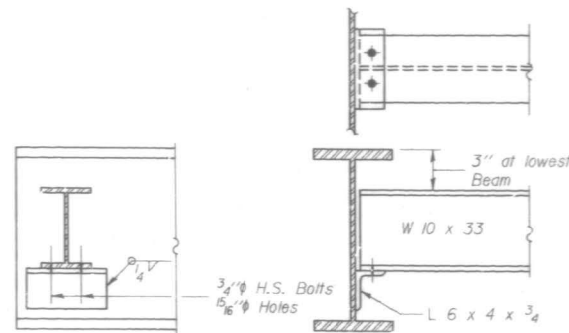
F.A.P. RTE.	SECTION	COUNTY	TOTAL SHEETS	SHEET NO.
VAR	2017-025BP	COOK	23	8
CONTRACT NO. 62F41				
ILLINOIS		FED. AID PROJECT		

FOR INFORMATION ONLY

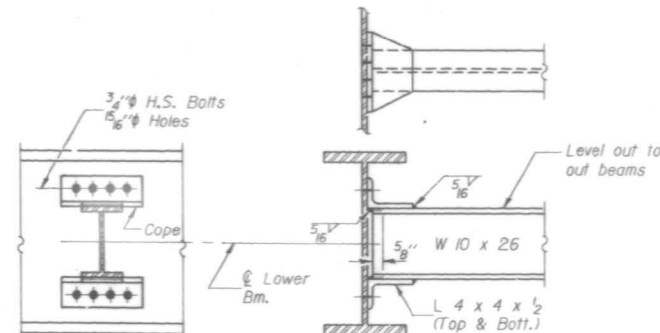
STATE OF ILLINOIS
DEPARTMENT OF TRANSPORTATION



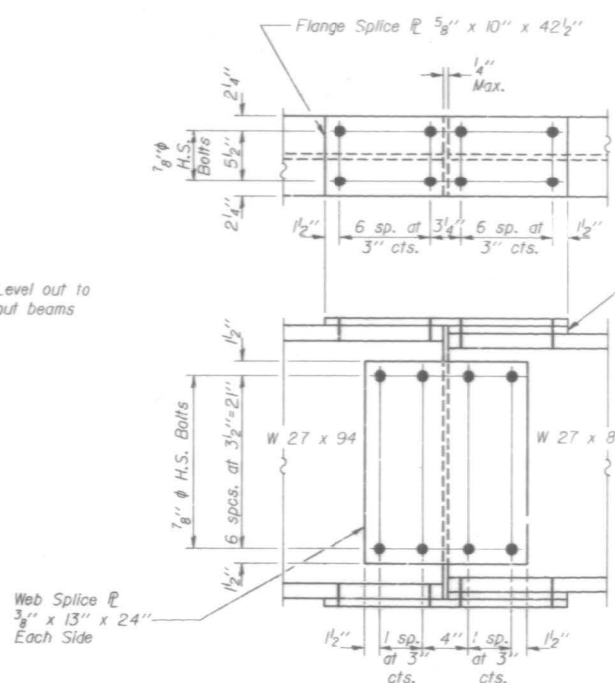
FRAMING PLAN



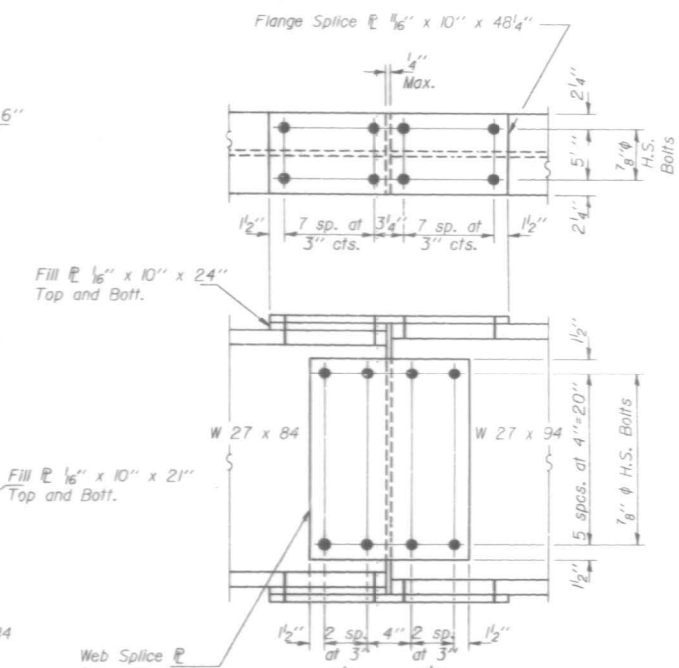
DIAPHRAGM D
12 Required



DIAPHRAGM D1
30 Required



SPLICE #1 & #4
(Looking South #1)
(Looking North #4)



SPLICE #2 & #3
(Looking South #2)
(Looking North #3)

STRUCTURAL STEEL
SPANS 1, 2, AND 3
F.A.U. RT. 1602 SEC. 1010-VB-BR(82)
COOK COUNTY
STATION 170+43.00

MODEL: Default
FILE: \hulib\B&E\BID\ITC\Illinois.gov\FWD\DOT\Documents\BID\DOT Office\BID\RT 1602\170+43\StructuralSteel\170+43-SP-Plan.dgn

USER NAME = saintvlch	DESIGNED -	REVISED -
	DRAWN -	REVISED -
PLOT SCALE = 100.0000' / in.	CHECKED -	REVISED -
PLOT DATE = 8/22/2017	DATE -	REVISED -

STATE OF ILLINOIS
DEPARTMENT OF TRANSPORTATION

SN 016-0955
STRUCTURAL STEEL FRAMING PLAN & DIAPHRAGM

SCALE: SHEET OF SHEETS STA. TO STA.

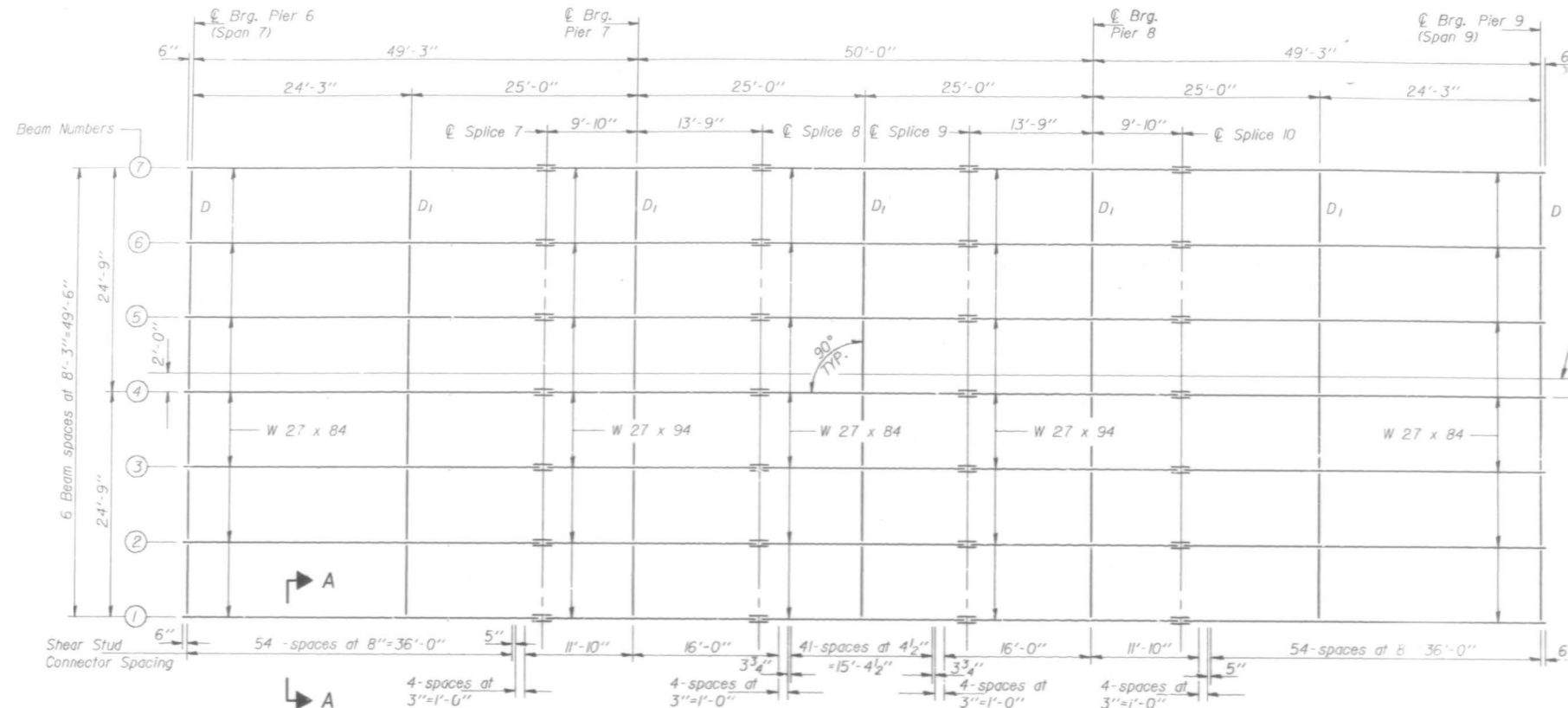
F.A.P. RTE.	SECTION	COUNTY	TOTAL SHEETS	SHEET NO.
VAR	2017-025BP	COOK	23	10
ILLINOIS FED. AID PROJECT			CONTRACT NO. 62F41	

FOR INFORMATION ONLY

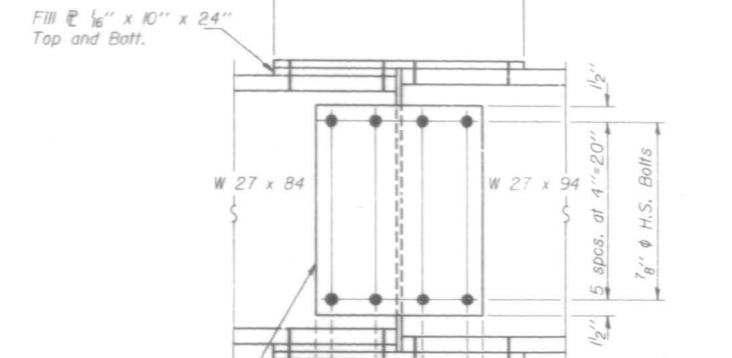
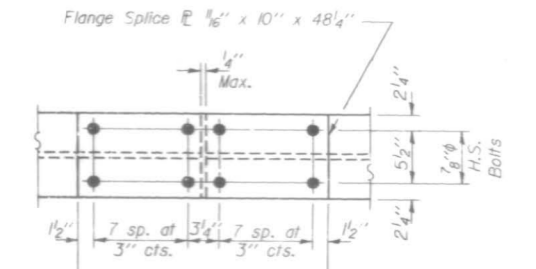
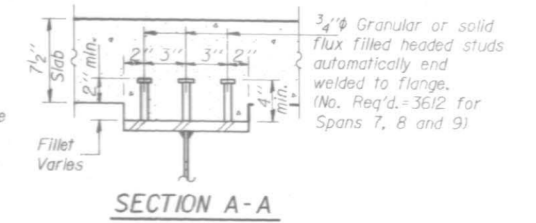
STATE OF ILLINOIS
DEPARTMENT OF TRANSPORTATION

ROUTE NO.	SECTION	COUNTY	SHEET NO.	SHEET NO.
1602	1010-VB-BR(82)	COOK	123	23
FED. AID DIST. NO.		ILLINOIS	FED. AID PROJECT	

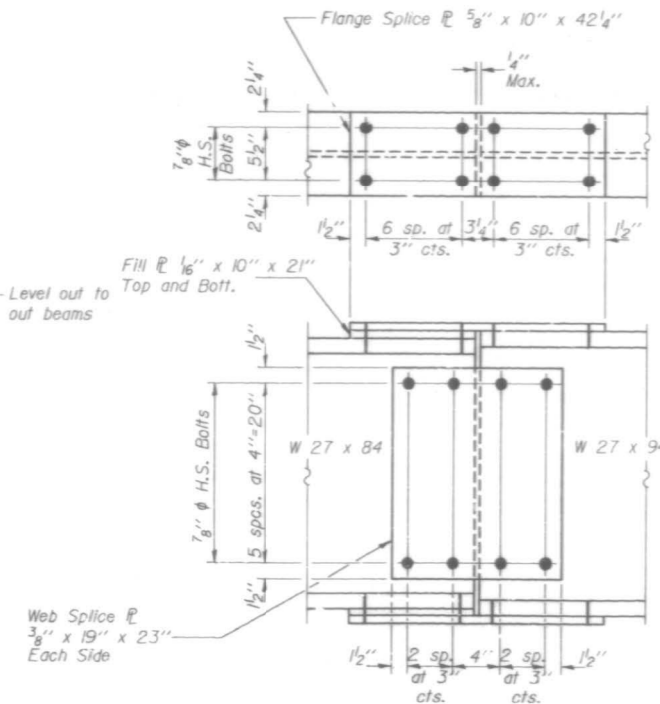
SHEET NO. 23
36 SHEETS



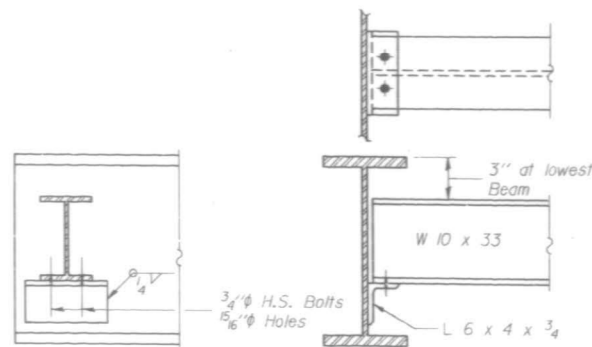
FRAMING PLAN



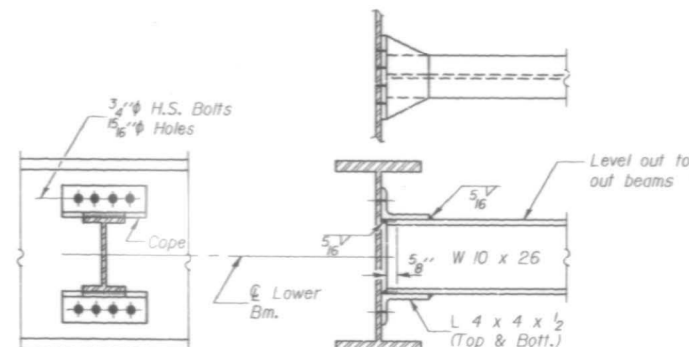
SPLICE #8 & #9
(Looking South #8)
(Looking North #9)



SPLICE #7 & #10
(Looking North #7)
(Looking South #10)



DIAPHRAGM D
12 Required



DIAPHRAGM D1
30 Required

STRUCTURAL STEEL
SPANS 7, 8, AND 9
F.A.U. RT. 1602 SEC. 1010-VB-BR(82)
COOK COUNTY
STATION 170+43.00

STATE OF ILLINOIS
DEPARTMENT OF TRANSPORTATION

SN 016-0955
STRUCTURAL STEEL FRAMING PLAN & DIAPHRAGM

F.A.P. RTE.	SECTION	COUNTY	TOTAL SHEETS	SHEET NO.
VAR	2017-025BP	COOK	23	12
CONTRACT NO. 62F41				

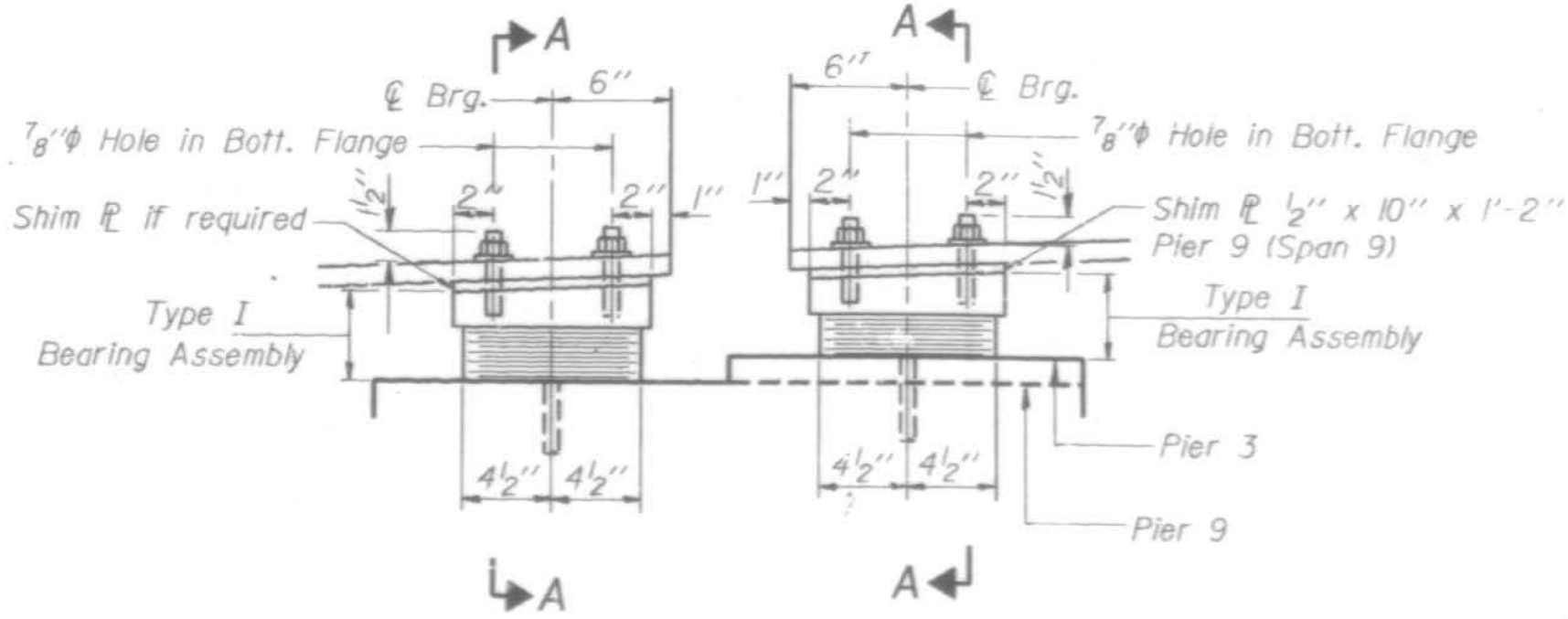
SCALE: SHEET OF SHEETS STA. TO STA.

USER NAME = saintvlch	DESIGNED -	REVISED -
	DRAWN -	REVISED -
PLOT SCALE = 100.0000' / in.	CHECKED -	REVISED -
PLOT DATE = 8/22/2017	DATE -	REVISED -

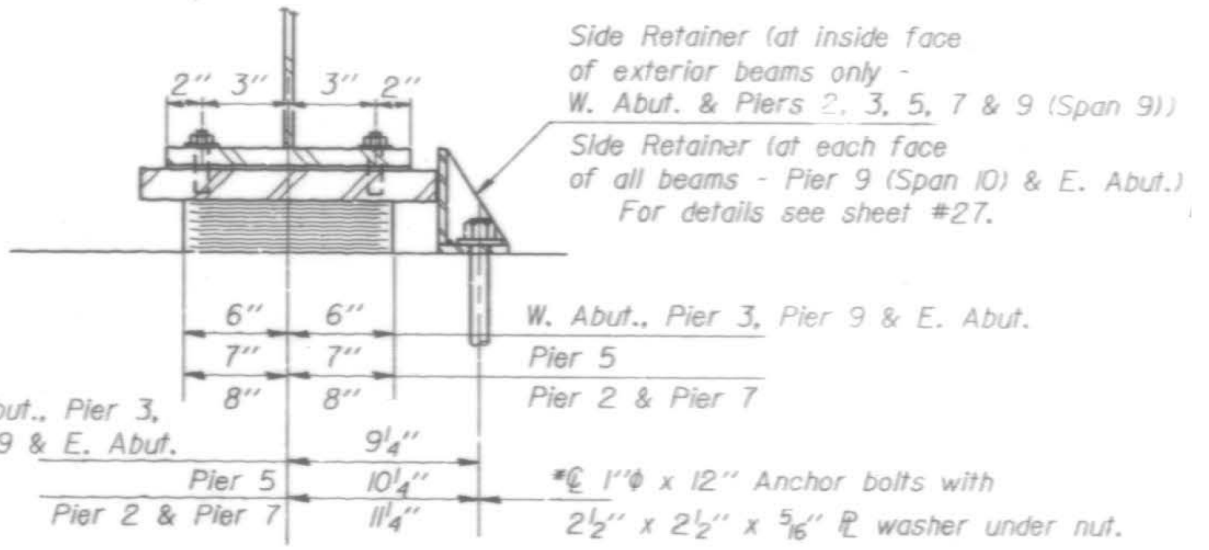
MODEL: Default
FILE: \\mhc\p\1602\1010-VB-BR(82)\Documents\170217\CADD\Drawings\170217-Sub-Plan.dwg

FOR INFORMATION ONLY

STATE OF ILLINOIS
DEPARTMENT OF TRANSPORTATION



ELEVATION AT PIERS 3 & 9
(Pier 3 Looking North)
(Pier 9 Looking South)



SECTION A-A

ELASTOMERIC EXPANSION BRG. TABLE

	"A"	"B"	"C"	"D"	"E"	"F"	"G"	"H"	"I"	"J"
W. Abut.	3/8"	4	3/32"	5	3/8"	2" x 10" x 1'-2"	2"	2 1/4"	1 1/8"	3 5/16"
Pier 2	1/2"	3	1/8"	4	1/2"	2 5/8" x 12" x 1'-6"	2 5/8"	2 3/4"	2 5/8"	4 1/8"
Pier 3 (Span 3)	3/8"	6	3/32"	7	3/8"	2" x 10" x 1'-2"	2"	3 3/16"	1 5/8"	4 7/8"
Pier 3 (Span 4)	3/8"	4	3/32"	5	3/8"	1 3/4" x 10" x 1'-2"	1 3/4"	2 1/4"	1 1/8"	3 5/8"
Pier 5	7/16"	4	1/8"	5	7/16"	2 1/8" x 11" x 1'-4"	—	2 1/8"	2 1/8"	4 3/8"
Pier 7	1/2"	4	1/8"	5	1/2"	2 1/4" x 12" x 1'-6"	—	3"	2 1/4"	5 1/4"
Pier 9 (Span 9)	3/8"	4	3/32"	5	3/8"	1 3/8" x 10" x 1'-2"	1 3/8"	2 1/4"	1 1/8"	3 5/8"
Pier 9 (Span 10)	3/8"	4	3/32"	5	3/8"	2" x 10" x 1'-2"	2"	2 1/4"	1 5/8"	3 7/8"
E. Abut.	3/8"	3	3/32"	4	3/8"	2 1/8" x 8" x 1'-2"	2 1/8"	1 3/4"	1 1/8"	3 5/8"

See sheet #27 for Bill of Material.

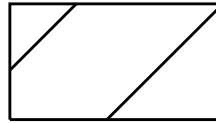
MODEL: Default
FILE: \\nas01\p01\B&E\BID\NTEC\Illinois\gov\PIV\DOT\Documents\BID\Office\BID\ref\1\Projects\129217\CADD\B&E\Design\129217-ehp-plb.dgn

USER NAME = saintvlch	DESIGNED -	REVISED -
	DRAWN -	REVISED -
PLOT SCALE = 100,0000' / in.	CHECKED -	REVISED -
PLOT DATE = 8/22/2017	DATE -	REVISED -

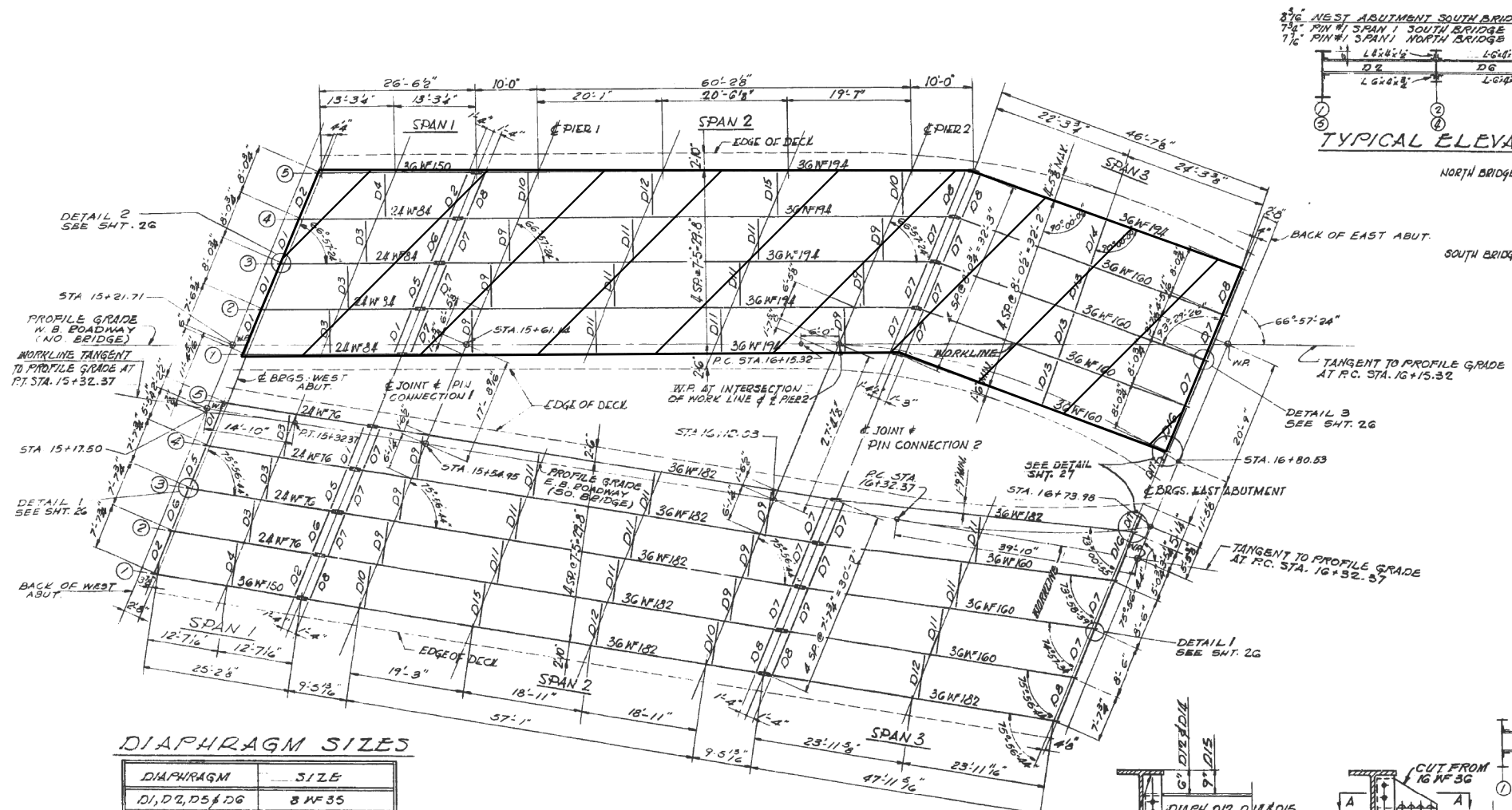
**STATE OF ILLINOIS
DEPARTMENT OF TRANSPORTATION**

SN 016-0955			
BEARING DETAILS FOR PIERS 3 & 9			
SCALE:	SHEET	OF SHEETS	STA. TO STA.

F.A.P. RTE.	SECTION	COUNTY	TOTAL SHEETS	SHEET NO.
VAR	2017-025BP	COOK	23	14
CONTRACT NO. 62F41				
ILLINOIS		FED. AID PROJECT		



- AREA TO BE PAINTED



DIAPHRAGM SIZES

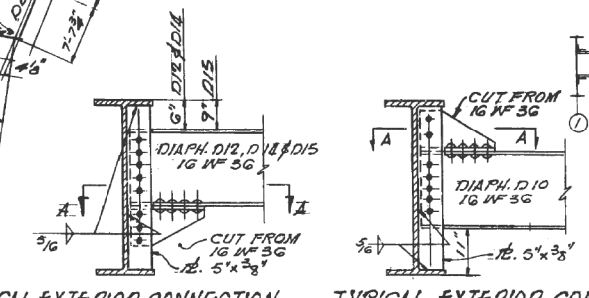
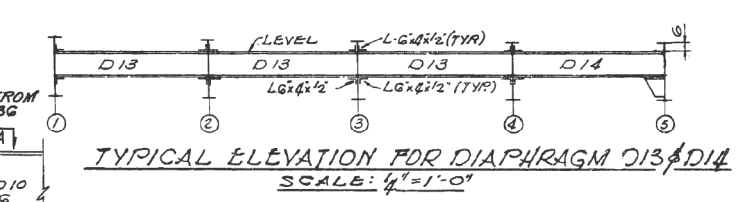
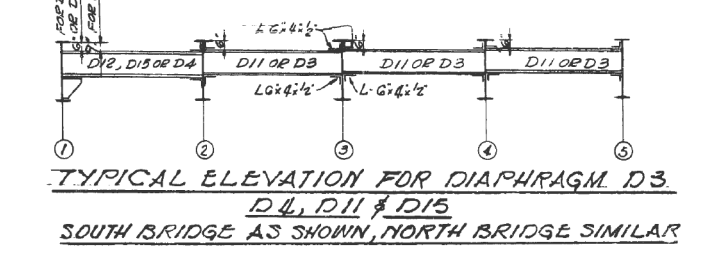
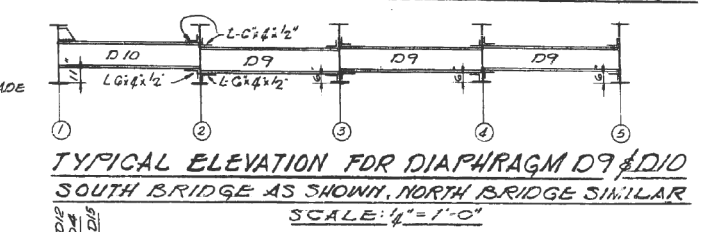
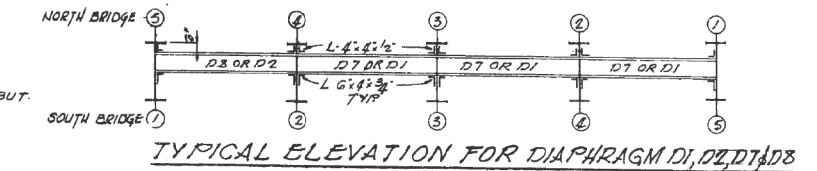
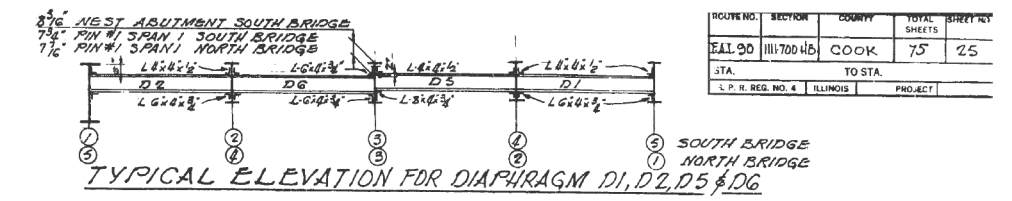
DIAPHRAGM	SIZE
D1, D2, D5 & D6	8 W 35
D3 & D4	12 W 36
D7, D10, D11, D12, D13, D14 & D15	18 W 36
D7 & D8	12 W 40
D16	12 W 45

STEEL FRAMING PLAN
SCALE: 1/4" = 1'-0"

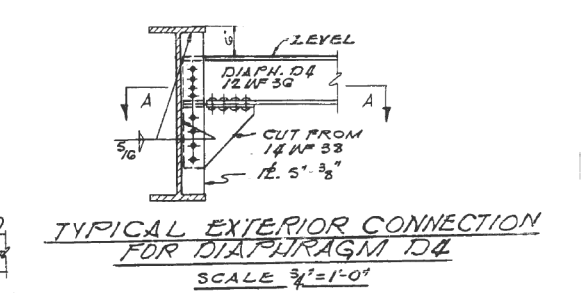
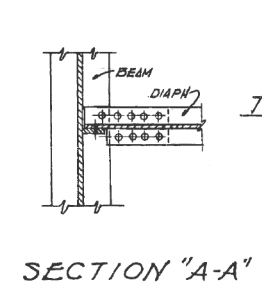
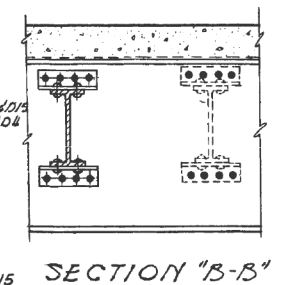
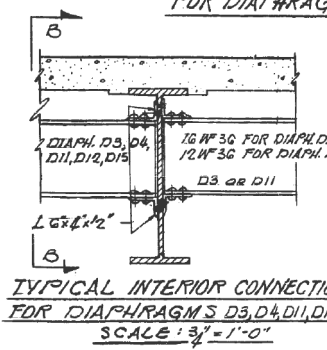
TOP OF BEAM ELEVATIONS FOR FABRICATION ONLY

BEAM LOCATION	SOUTH BRIDGE					NORTH BRIDGE				
	1	2	3	4	5	1	2	3	4	5
E BRGS. W. ABUT.	25.323	25.415	25.505	25.574	25.680	25.736	25.704	25.669	25.632	25.592
E PIN CONN. 1	25.578	25.653	25.728	25.802	25.875	25.926	25.872	25.814	25.755	25.693
E PIER 1	25.567	25.640	25.713	25.785	25.856	25.900	25.844	25.784	25.723	25.659
E PIER 2	25.503	25.563	25.622	25.683	25.742	25.746	25.673	25.601	25.528	25.456
E PIN CONN. 2	25.492	25.550	25.607	25.666	25.723	25.720	25.645	25.571	25.496	25.422
E BRGS. E. ABUT.	25.320	25.372	25.428	25.483	25.536	25.538	25.474	25.408	25.343	25.277

NOTE:
ELEVATIONS ARE BASED ON A DIMENSION OF 6 3/4" FROM THE THEORETICAL TOP OF SLABS TO TOP OF BEAMS AT E OF BEARINGS OF ABUTMENTS AND E OF PIN CONNECTIONS. THE TOP FLANGE IS CONSIDERED A STRAIGHT LINE BETWEEN THESE POINTS.



TYPICAL EXTERIOR CONNECTION DIAPHRAGM D10



ILLINOIS DIVISION OF HIGHWAYS
SOUTH EXPRESSWAY
115TH. ST. GRADE SEPARATION
STEEL FRAMING PLAN AND DETAILS
SCALE: AS NOTED DATE: 9-15-59

MODEL: Default FILE: \\mspc-pw\hul\B&E\BID\ITEC\Illinois\poc\p\WDDOT\Documents\BID\Office\BIDirect_1\Projects\2017\COAD\B&E\Design\2017-09-15-59.dgn

USER NAME = saintvlch	DESIGNED -	REVISED -
	DRAWN -	REVISED -
PLOT SCALE = 100,0000' / in.	CHECKED -	REVISED -
PLOT DATE = 8/24/2017	DATE -	REVISED -

STATE OF ILLINOIS
DEPARTMENT OF TRANSPORTATION

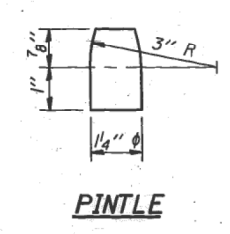
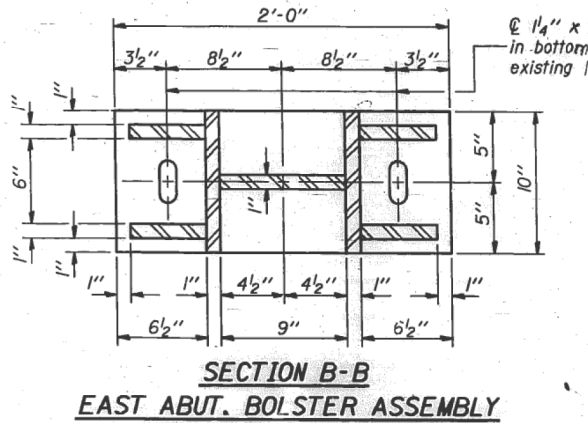
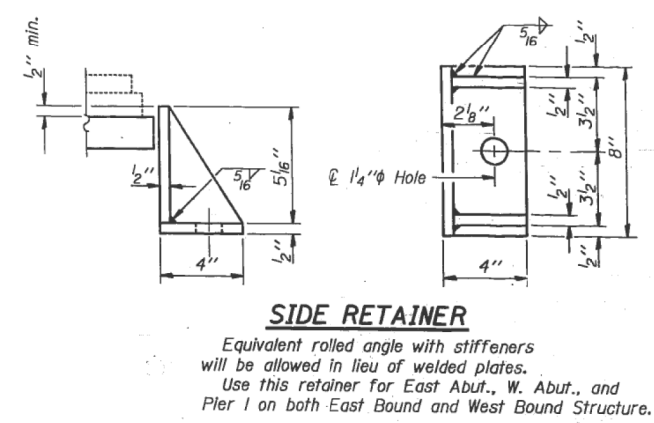
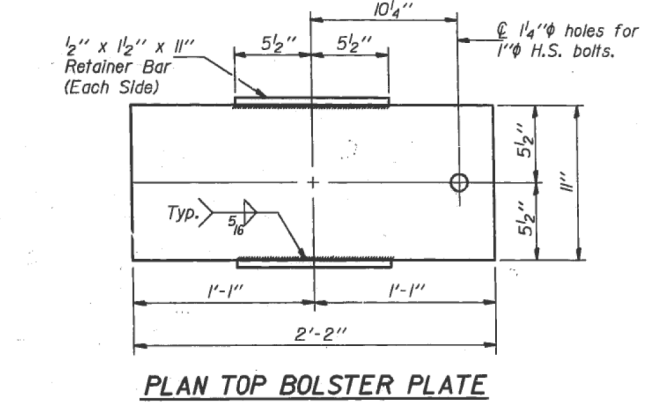
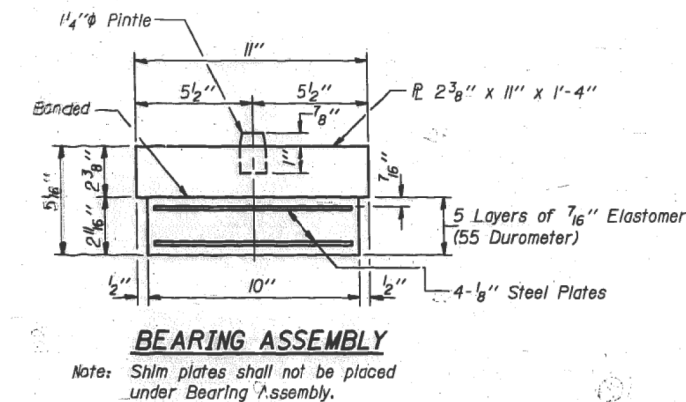
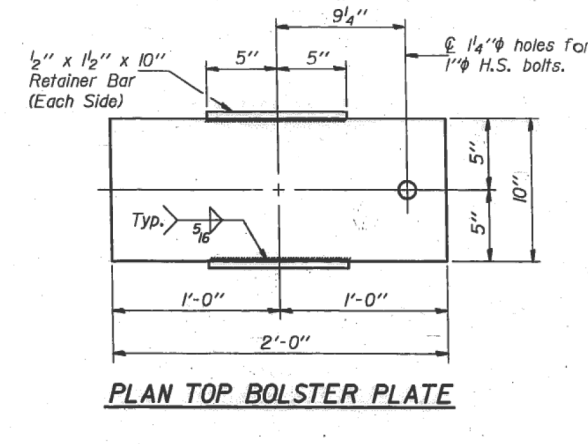
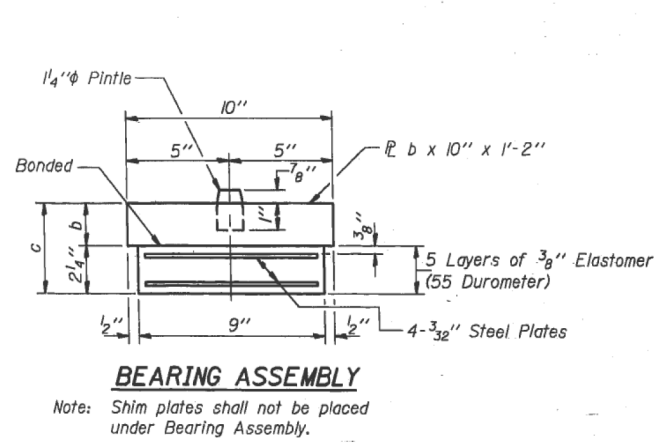
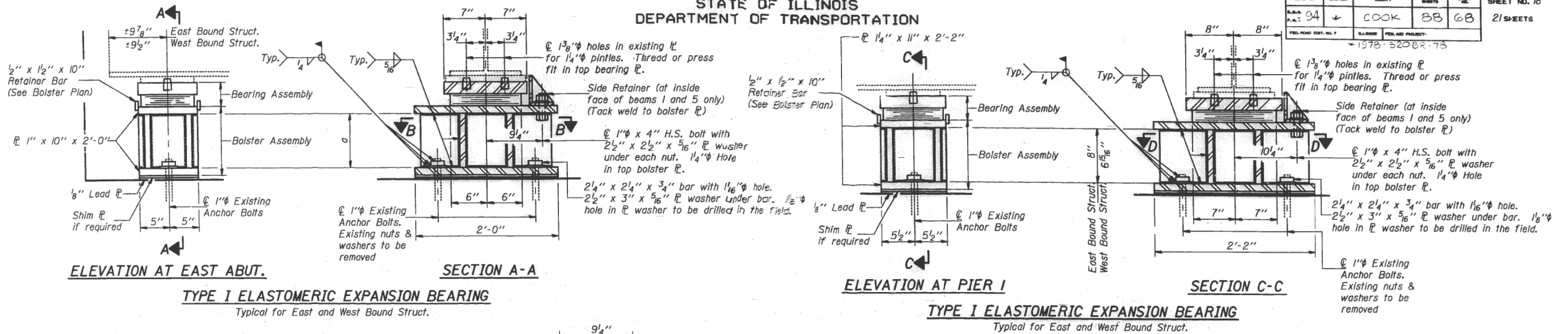
SN 016-2043
STRUCTURAL STEEL FRAMING PLAN & TYPICAL ELEVATION
SCALE: SHEET OF SHEETS STA. TO STA.

F.A.P. RTE.	SECTION	COUNTY	TOTAL SHEETS	SHEET NO.
VAR	2017-025BP	COOK	23	17
ILLINOIS FED. AID PROJECT			CONTRACT NO. 62F41	

FOR INFORMATION ONLY

STATE OF ILLINOIS
DEPARTMENT OF TRANSPORTATION

ROUTE NO.	SECTION	COUNTY	SHEET	NO.
94	+	COOK	88	68
FED. ROAD DIST. NO. 1				
FED. AID PROJECT: 1978-320BR-78				
SHEET NO. 18				21 SHEETS



Note: Cost of removal and disposal of existing expansion bearings, bearing plates, nuts, washers and shims will be incidental to "Removal of Existing Concrete Deck".

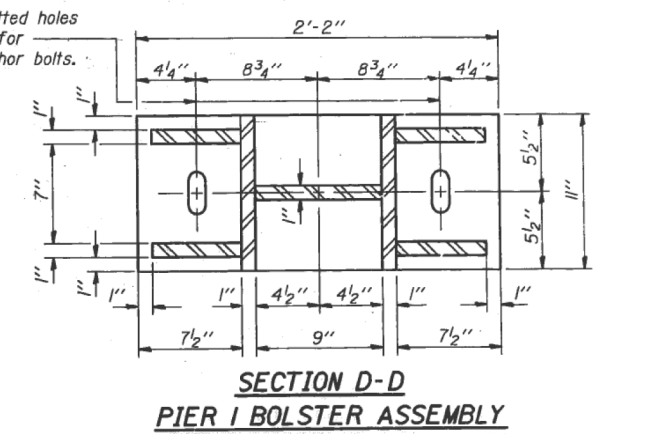


TABLE OF DIMENSIONS FOR EAST ABUTMENTS

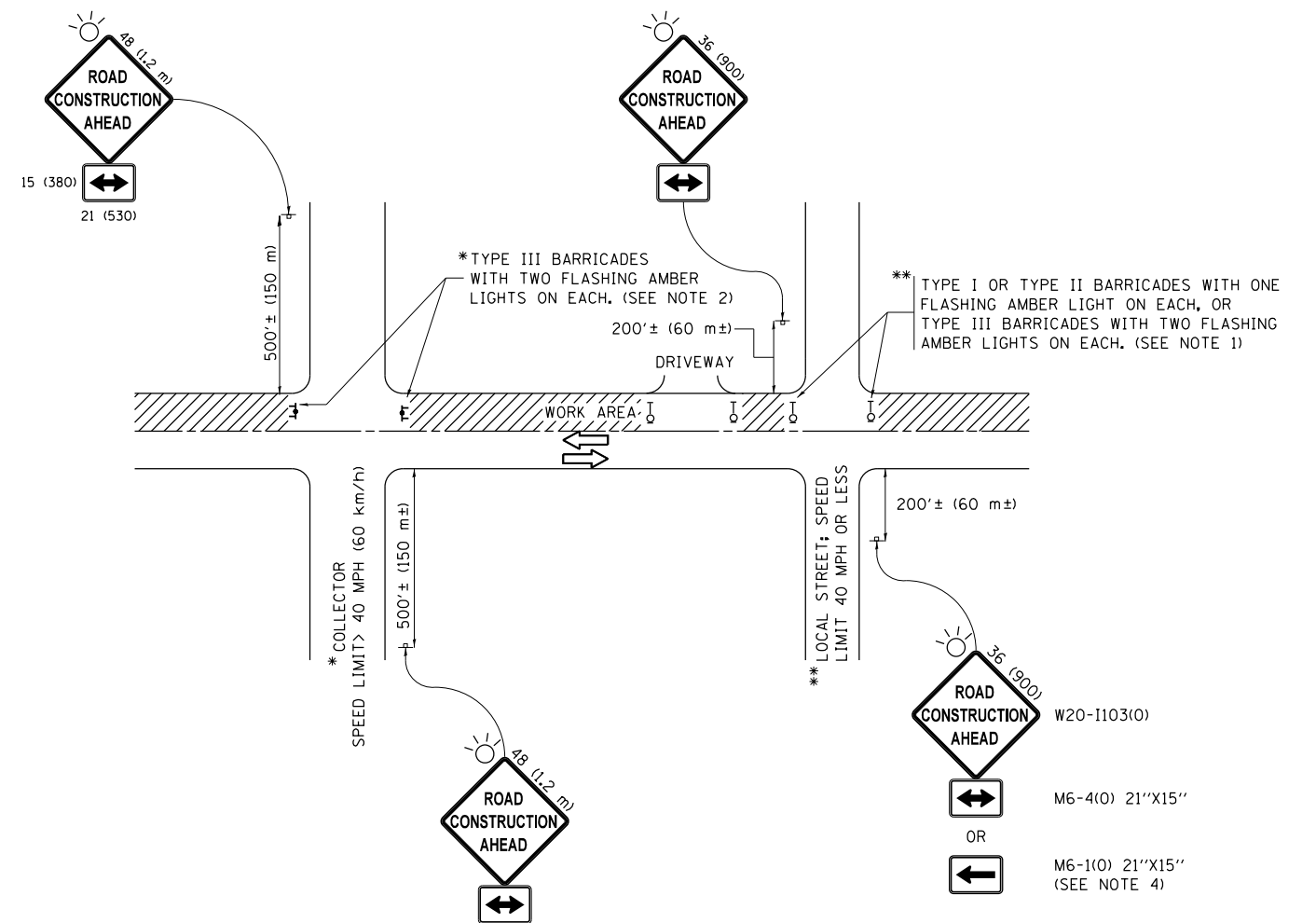
Location	West Bound Structure					East Bound Structure				
	Bm. 1	Bm. 2	Bm. 3	Bm. 4	Bm. 5	Bm. 1	Bm. 2	Bm. 3	Bm. 4	Bm. 5
a	7 1/8"	7 1/8"	7 1/8"	7 1/8"	7 3/4"	8 3/4"	8 1/2"	9 5/8"	9 1/8"	9 3/8"
b	1 1/8"	1 1/8"	1 1/8"	1 1/8"	2"	2"	1 1/8"	1 1/8"	1 1/8"	2"
c	4 1/8"	4 1/8"	4 1/8"	4 1/8"	4 1/4"	4 1/4"	4 1/8"	4 1/8"	4 1/8"	4 1/4"

BILL OF MATERIAL

Item	Unit	Total
Elastomeric Bearing Assembly Type I	Each	20

BEARING DETAILS
F.A.I. RT. 94 SEC. 1978-320BR-78
COOK COUNTY

MODEL: Default FILE: \\nas0101\B&E\IDNT\EC\Illinois\govt\PIV\DOT\Documents\1801\1\Projects\1292\1\COOD\B&E\Design\1292\17-shr-elb-an.dgn



NOTES:

1. SIDE ROAD WITH A SPEED LIMIT OF 40 MPH (60 km/h) OR LESS AS SHOWN ON THE DRAWING AND AS DIRECTED BY THE ENGINEER:
 - a) ONE "ROAD CONSTRUCTION AHEAD" SIGN 36 x 36 (900x900) WITH A FLASHER MOUNTED ON IT APPROXIMATELY 200' (60 m) IN ADVANCE OF THE MAIN ROUTE.
 - b) THE CLOSED PORTION OF THE MAIN ROUTE SHALL BE PROTECTED BY BLOCKING WITH TYPE I, TYPE II OR TYPE III BARRICADES, 1/3 OF THE CROSS SECTION OF THE CLOSED PORTION.
2. SIDE ROAD WITH A SPEED LIMIT GREATER THAN 40 MPH (60 km/h) AS SHOWN ON THE DRAWING AND AS DIRECTED BY THE ENGINEER:
 - a) ONE "ROAD CONSTRUCTION AHEAD" SIGN 48 x 48 (1.2 m x 1.2 m) WITH A FLASHER MOUNTED ON IT APPROXIMATELY 500' (150 m) IN ADVANCE OF THE MAIN ROUTE.
 - b) THE CLOSED PORTION OF THE MAIN ROUTE SHALL BE PROTECTED BY BLOCKING WITH TYPE III BARRICADES, 1/2 OF THE CROSS SECTION OF THE CLOSED PORTION.
3. CONES MAY BE SUBSTITUTED FOR BARRICADES OR DRUMS AT HALF THE SPACING DURING DAY OPERATIONS. CONES SHALL BE A MINIMUM OF 28 (710) IN HEIGHT.
4. WHEN THE SIDE ROAD LIES BETWEEN THE BEGINNING OF THE MAINLINE SIGNING AND THE WORK ZONE, A SINGLE HEADED ARROW (M6-1) SHALL BE USED IN LIEU OF THE DOUBLE HEADED ARROW (M6-4).
5. WHEN WORK IS BEING PERFORMED ON A SIDE ROAD OR DRIVEWAY, FOLLOW THE APPLICABLE STANDARD(S). THE DIRECTIONAL ARROW (M6-1 OR M6-4) SHALL BE COVERED OR REMOVED WHEN NO LONGER CONSISTENT WITH THE TRAFFIC CONTROL SET-UP.
6. ADVANCE WARNING SIGNS ARE TO BE OMITTED ON DRIVEWAYS UNLESS OTHERWISE SPECIFIED IN THE PLANS OR BY THE ENGINEER.
7. THE TRAFFIC CONTROL AND PROTECTION FOR SIDE ROADS, INTERSECTIONS, AND DRIVEWAYS SHALL BE INCLUDED IN THE COST OF SPECIFIED TRAFFIC CONTROL STANDARDS OR ITEMS.

All dimensions are in inches (millimeters) unless otherwise shown.

FILE NAME =	USER NAME = saintwilch	DESIGNED - L.H.A.	REVISED - A. HOUSEH 10-15-96
p:\11\084EBIDINTEG.illinois.gov\PIWIDOT\Documents\IDOT Offices\District 1\Projects\DI22\Drawings\Design\DistStd.dgn			REVISED - T. RAMMACHER 01-06-00
Default	PLOT SCALE = 100.0000' / in.	CHECKED -	REVISED - A. SCHUETZE 07-01-13
	PLOT DATE = 8/17/2017	DATE - 06-89	REVISED - A. SCHUETZE 09-15-16

**STATE OF ILLINOIS
DEPARTMENT OF TRANSPORTATION**

**TRAFFIC CONTROL AND PROTECTION FOR
SIDE ROADS, INTERSECTIONS, AND DRIVEWAYS**

SCALE: NONE SHEET 1 OF 1 SHEETS STA. TO STA.

F.A.P. RTE.	SECTION	COUNTY	TOTAL SHEETS	SHEET NO.
VAR.	2017-025BP	COOK	23	21
TC-10		CONTRACT NO.	62F41	
ILLINOIS FED. AID PROJECT				

TURN BAY ENTRANCE AT START OF LANE CLOSURE TAPER

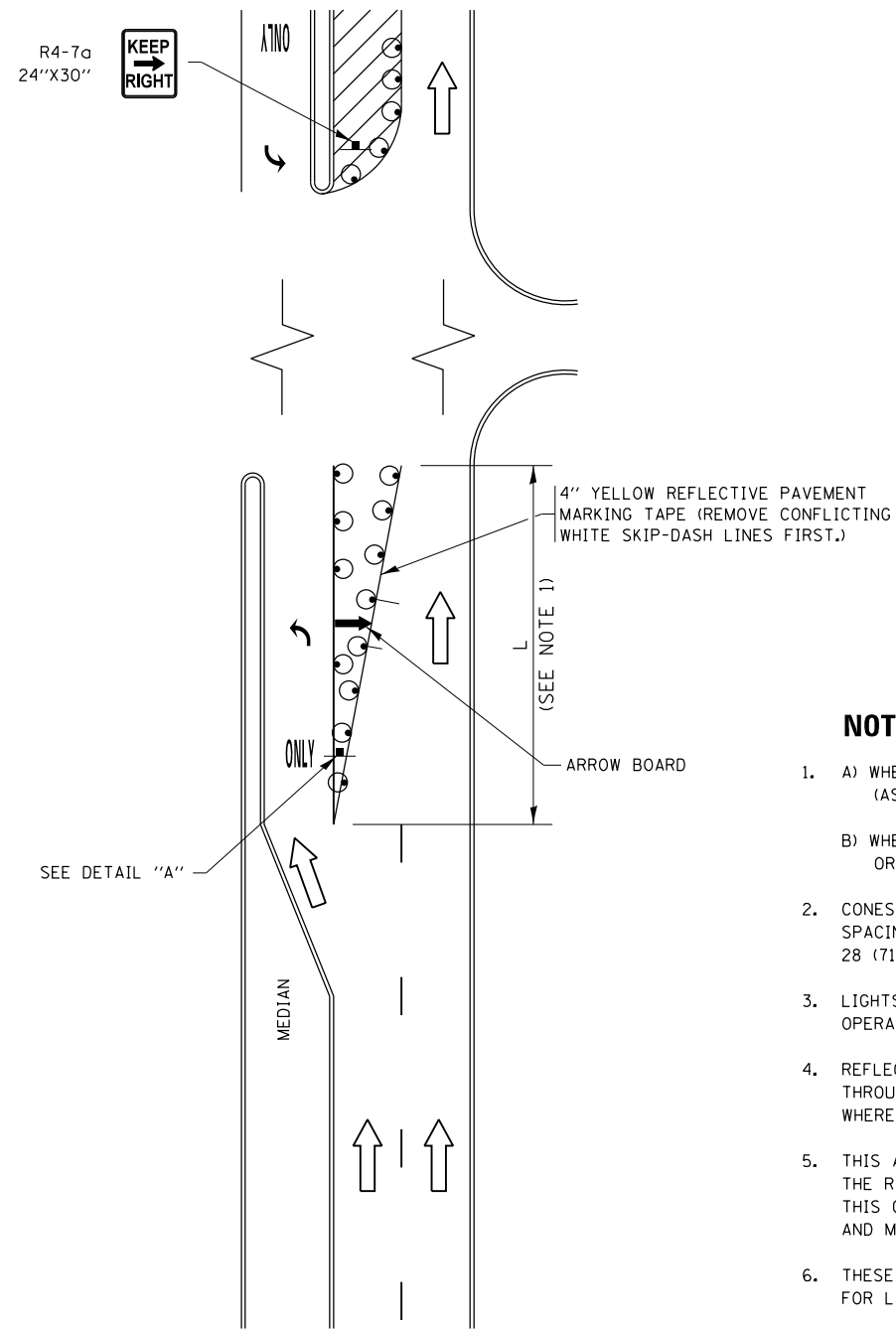


FIGURE 1

TURN BAY ENTRANCE WITHIN A LANE CLOSURE

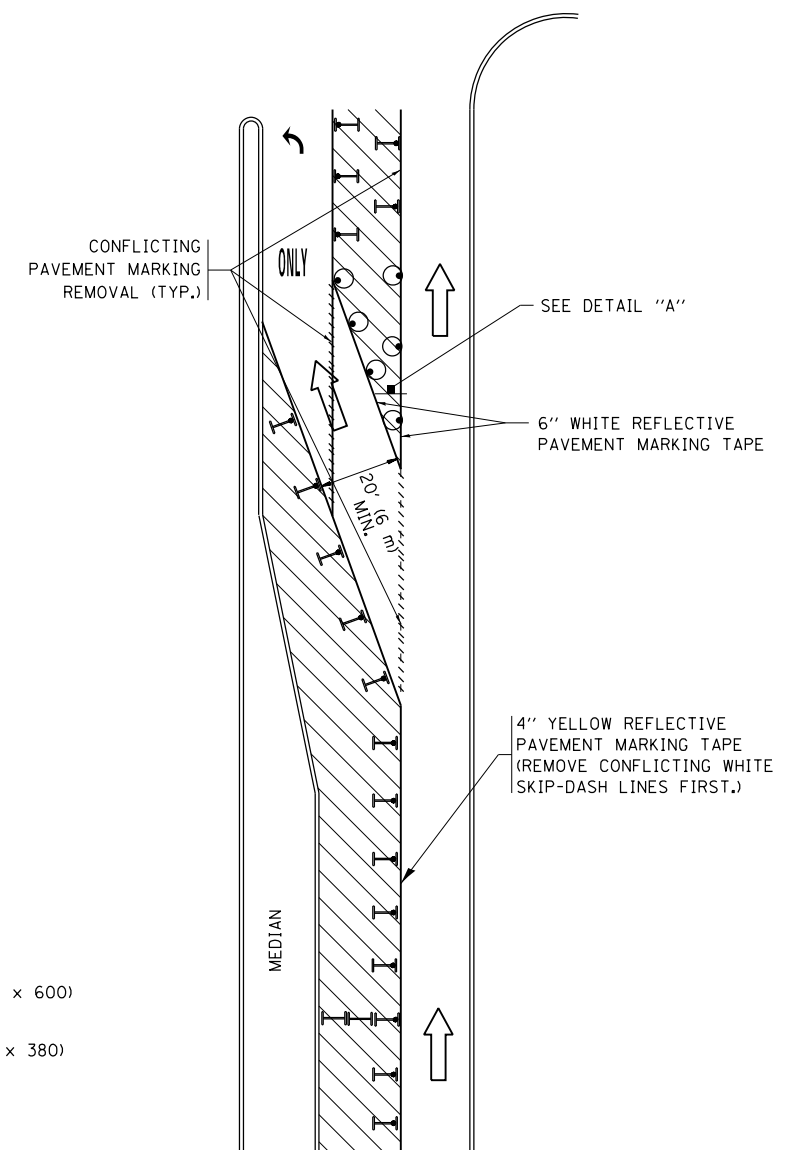
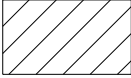
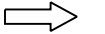







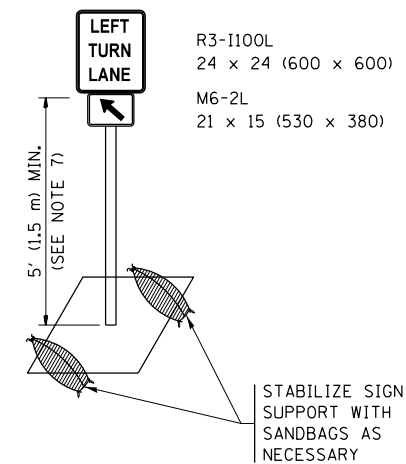
FIGURE 2

LEGEND

-  WORK AREA
-  LANE OPEN TO TRAFFIC
-  ARROW BOARD
-  TYPE I OR II BARRICADE OR DRUM WITH STEADY BURN LIGHT
-  DRUM WITH STEADY BURN LIGHT
-  SIGN ASSEMBLY
-  TYPE I OR II CHECK BARRICADE WITH FLASHING LIGHT

NOTES:

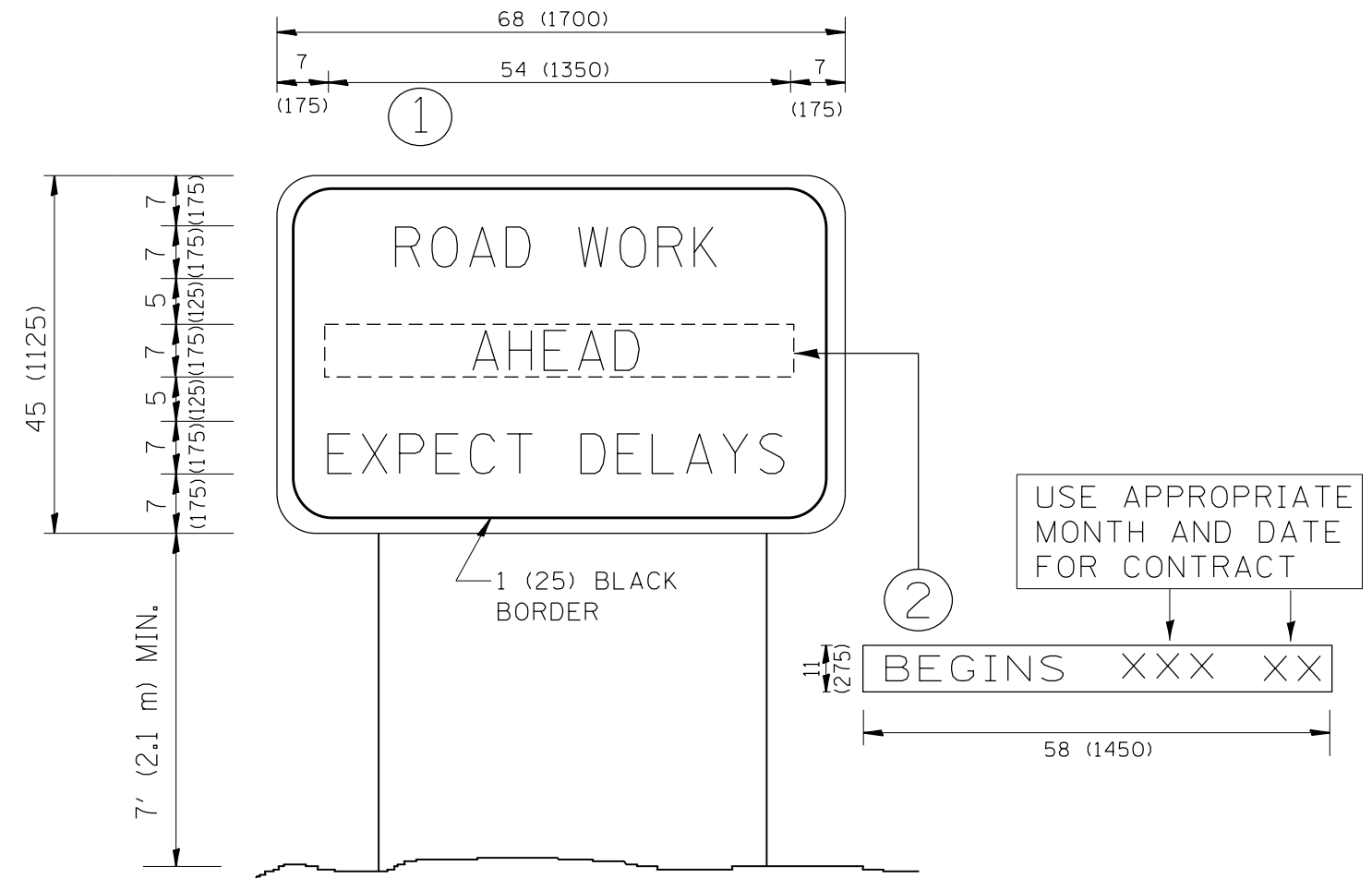
1. A) WHEN "L" IS \leq THE STORAGE LENGTH OF THE TURN LANE (AS SHOWN IN FIG. 1), USE FIGURE 1.
B) WHEN "L" IS $>$ THE STORAGE LENGTH OF THE TURN LANE OR THE TURN LANE IS WITHIN THE LANE CLOSURE, USE FIGURE 2.
2. CONES MAY BE SUBSTITUTED FOR BARRICADES OR DRUMS AT HALF THE SPACING DURING DAY OPERATIONS. CONES SHALL BE A MINIMUM OF 28 (710) IN HEIGHT.
3. LIGHTS WILL NOT BE REQUIRED ON BARRICADES OR DRUMS FOR DAY OPERATIONS. ALL LIGHTS SHALL BE MONODIRECTIONAL.
4. REFLECTIVE TEMPORARY PAVEMENT MARKINGS SHALL BE PLACED THROUGHOUT THE BARRICADED AREAS OF EACH TURN BAY AS SHOWN WHERE THE CLOSURE TIME IS GREATER THAN FOURTEEN (14) DAYS.
5. THIS APPLICATION ALSO APPLIES WHEN WORK IS BEING PERFORMED IN THE RIGHT LANE(S) AND THE RIGHT TURN BAY IS TO REMAIN OPEN. UNDER THIS CONDITION, "RIGHT TURN LANE" R3-1100R 24 x 24 (600 x 600) AND M6-2R 21 x 15 (530 x 380) SHALL BE USED.
6. THESE CONTROLS SHALL SUPPLEMENT MAINLINE TRAFFIC CONTROL FOR LANE CLOSURES.
7. THE SIGNS SHALL BE MOUNTED ABOVE THE BARRICADES/DRUMS ON SEPARATE SIGN SUPPORTS THAT MEET NCHRP 350 OR MASH PREQUIREMENTS.
8. TRAFFIC CONTROL AND PROTECTION AT TURN BAYS (TO REMAIN OPEN TO TRAFFIC) SHALL BE INCLUDED IN THE COST OF SPECIFIED TRAFFIC CONTROL STANDARDS OR ITEMS.



DETAIL A

All dimensions are in inches (millimeters) unless otherwise shown.

FILE NAME =	USER NAME = sornvilch	REVISED - T. RAMMACHER 09-08-94	REVISED - R. BORO 09-14-09	STATE OF ILLINOIS DEPARTMENT OF TRANSPORTATION	TRAFFIC CONTROL AND PROTECTION AT TURN BAYS (TO REMAIN OPEN TO TRAFFIC)	F.A.P. R.T.E.	SECTION	COUNTY	TOTAL SHEETS	SHEET NO.
pw:\IL\084EBIDINTEG\illinois.gov\PIDOT\Documents\IDOT Offices\District 1\Projects\DI22\REVISED Design\HOUSEH 11-07-95	REVISED - A. HOUSEH 11-07-95	REVISED - A. SCHUETZE 07-01-13	REVISED - A. SCHUETZE 07-01-13			VAR.	2017-025BP	COOK	23	22
Default	PLOT SCALE = 100.0000' / in.	REVISED - A. HOUSEH 10-12-96	REVISED - A. SCHUETZE 09-15-16			TC-14		CONTRACT NO. 62F41		
	PLOT DATE = 8/17/2017	REVISED - T. RAMMACHER 01-06-00	REVISED -			SCALE: NONE	SHEET 1 OF 1 SHEETS	STA. TO STA.	ILLINOIS FED. AID PROJECT	



NOTES:

1. USE BLACK LETTERING ON ORANGE BACKGROUND.
2. ERECT SIGNS IN ADVANCE OF THE LOCATION FOR THE "ROAD CONSTRUCTION AHEAD" SIGN AT LOCATIONS AS DIRECTED BY THE ENGINEER.
3. ERECT SIGN ① WITH INSTALLED PANEL ② ONE WEEK PRIOR TO THE START OF CONSTRUCTION.
4. REMOVE PANEL ② SOON AFTER THE START OF CONSTRUCTION.
5. SEE SPECIAL PROVISION FOR "TEMPORARY INFORMATION SIGNING" FOR ADDITIONAL INFORMATION.
6. ONE SIGN ASSEMBLY EQUALS 25.70 SQ. FT. (2.3 SQ. M.)
7. SHALL BE PAID FOR AS TEMPORARY INFORMATION SIGNING.

ALL DIMENSIONS ARE IN INCHES (MILLIMETERS) UNLESS OTHERWISE SHOWN.

FILE NAME =	USER NAME = saintwlch	DESIGNED -	REVISED - R. MIRS 09-15-97	STATE OF ILLINOIS DEPARTMENT OF TRANSPORTATION	ARTERIAL ROAD INFORMATION SIGN	F.A.P. RTE.	SECTION	COUNTY	TOTAL SHEETS	SHEET NO.	
pw:\IL\084EBIDINTEG.illinois.gov\PWIDOT\Documents\DOT Offices\District 1\Projects\DI22\Drawings\Design\DistStd.dgn	DRAWN	REVISED - R. MIRS 12-11-97	REVISED - T. RAMMACHER 02-02-99			VAR.	2017-025BP	COOK	23	23	
PLOT SCALE = 100.0000' / 1in.	CHECKED -	REVISED - C. JUCIUS 01-31-07	SCALE: NONE			SHEET NO. 1 OF 1 SHEETS	STA.	TO STA.	TC-22		CONTRACT NO. 62F41
PLOT DATE = 8/17/2017	DATE -		<small>FED. ROAD DIST. NO. 1 ILLINOIS FED. AID PROJECT</small>								