

STATE OF ILLINOIS  
DEPARTMENT OF TRANSPORTATION

F.A.U. RTE.	SECTION	COUNTY	TOTAL SHEETS	SHEET NO.
2807	1819SW-TR	COOK	22	1
ILLINOIS		CONTRACT NO.: 62F07		

FOR INDEX OF SHEETS, SEE SHEET NO. 2

# PROPOSED HIGHWAY PLANS

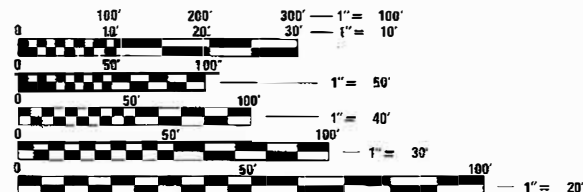
F.A.U. 2807 (HIBBARD RD.)  
AT ILLINOIS RD.  
TREE PRUNING AND  
ADA PEDESTRIAN RAMPS  
SECTION NO.: 1819SW-TR  
PROJECT: STP-2WWQ(001)  
COOK COUNTY  
C-91-207-17

PROJECT LOCATED IN THE VILLAGES  
OF WILMETTE AND WINNETKA

**TRAFFIC DATA:**

HIBBARD RD.  
SPEED LIMIT - 30MPH  
2014 ADT - 6750

ILLINOIS RD.  
SPEED LIMIT - 30MPH  
2014 ADT - 1800

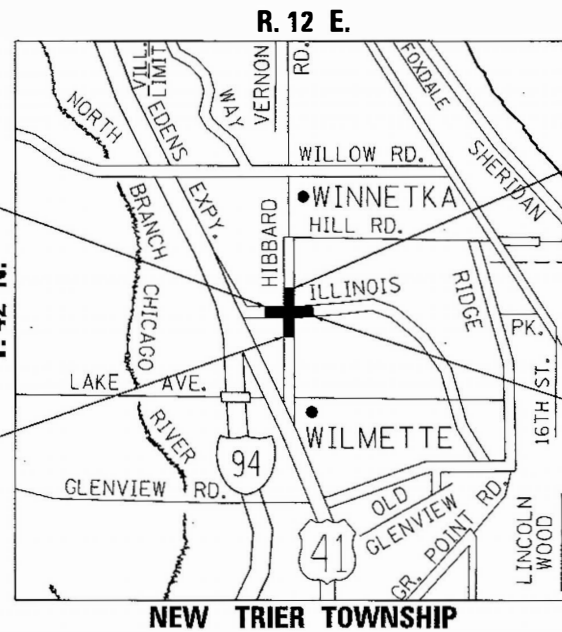


FULL SIZE PLANS HAVE BEEN PREPARED USING STANDARD ENGINEERING SCALES. REDUCED SIZED PLANS WILL NOT CONFORM TO STANDARD SCALES. IN MAKING MEASUREMENTS ON REDUCED PLANS, THE ABOVE SCALES MAY BE USED.

J.U.I.E.  
JOINT UTILITY LOCATION INFORMATION FOR EXCAVATION  
1-800-892-0123  
OR 811

ILLINOIS RD.  
PROJECT BEGINS  
STA. 49 + 00

HIBBARD RD.  
PROJECT BEGINS  
STA. 49 + 00



HIBBARD RD.  
PROJECT BEGINS  
STA. 51 + 00

ILLINOIS RD.  
PROJECT ENDS  
STA. 51 + 00



PROJECT ENGINEER: JENPAI CHANG (847) 705-4432  
PROJECT MANAGER: FAWAD AQUEEL (847) 705-4247

GROSS AND NET LENGTH OF PROJECT - 200 FEET - .04 MILES

CONTRACT NO. 62F07

STATE OF ILLINOIS  
DEPARTMENT OF TRANSPORTATION

SUBMITTED August 10 2017

*Anthony J. Quigley / CAB*  
REGION ENGINEER

*Maureen M. Addis PE, P.E.*  
ENGINEER OF DESIGN AND ENVIRONMENT

*Maureen M. Addis*  
DIRECTOR OF PROGRAM DEVELOPMENT

PRINTED BY THE AUTHORITY  
OF THE STATE OF ILLINOIS

INDEX OF SHEETS

SHEET NO.	DESCRIPTION	STATE STANDARDS
1	COVER SHEET	000001-06 STANDARD SYMBOLS, ABBREVIATIONS AND PATTERNS
2	INDEX OF SHEETS, STATE STANDARDS, AND GENERAL NOTES	424001-09 PERPENDICULAR CURB RAMPS FOR SIDEWALKS
3-4	SUMMARY OF QUANTITIES	424021-03 DEPRESSED CORNER RAMPS FOR SIDEWALKS
5-8	EXISTING AND PROPOSED TYPICAL SECTIONS	442201-03 CLASS C AND D PATCHES
9-10	EXISTING AND PROPOSED ROADWAY PLAN AND PROFILE	606001-06 CONCRETE CURB TYPE B AND COMBINATION CONCRETE CURB AND GUTTER
11	PROPOSED PAVEMENT MARKING PLAN	701006-05 OFF-ROAD OPERATIONS, 2L, 2W, 15' (4.5m) TO 24" (600mm) FROM PAVEMENT EDGE
12	PROPOSED LANDSCAPING PLAN	701301-04 LANE CLOSURE, 2L, 2W, SHORT TIME OPERATIONS
13	PROPOSED TRAFFIC PLAN	701311-03 LANE CLOSURE, 2L, 2W, MOVING OPERATIONS - DAY ONLY
14-15	PROPOSED ADA SIDEWALK RAMP DETAILS	701501-06 URBAN LANE CLOSURE, 2L, 2W, UNDIVIDED
16	PAVEMENT PATCHING FOR HMA SURFACED PAVEMENT (BD-22)	701801-06 LANE CLOSURE, MULTILANE, 1W OR 2W CROSSWALK OR SIDEWALK CLOSURE
17	CURB OR CURB AND GUTTER REMOVAL AND REPLACEMENT (BD-24)	701901-06 TRAFFIC CONTROL DEVICES
18	TRAFFIC CONTROL AND PROTECTION FOR SIDE ROADS, INTERSECTIONS, AND DRIVEWAYS (TC-10)	720001-01 SIGN PANEL MOUNTING DETAILS
19	DISTRICT ONE TYPICAL PAVEMENT MARKINGS (TC-13)	720006-04 SIGN PANEL ERECTION DETAILS
20	PRUNING FOR SAFETY AND EQUIPMENT CLEARANCE (BM-20)	780001-05 TYPICAL PAVEMENT MARKINGS
21	DISTRICT ONE FLASHING BEACON INSTALLATION DETAILS (TS-04)	
22	ARTERIAL ROAD INFORMATION SIGNING (TC-22)	

GENERAL NOTES:

BEFORE STARTING ANY EXCAVATION THE CONTRACTOR SHALL CALL "JULIE" AT 800-892-0123 OR "CUAN" (CHICAGO UTILITY ALERT NETWORK) AT 312-744-7000 FOR FIELD LOCATIONS OF BURIED ELECTRIC, TELEPHONE AND GAS FACILITIES, (48 HOURS NOTIFICATION IS REQUIRED).

10 FEET (3 METERS) TRANSITION SHALL BE USED TO MATCH PROPOSED CURB AND GUTTER AND MEDIAN ITEMS OF WORK TO EXISTING CURBS AND GUTTERS AND MEDIANS IN THE FIELD, UNLESS OTHERWISE SHOWN. THE TRANSITION SHALL BE PAID FOR AT THE CONTRACT UNIT PRICE FOR THE PROPOSED ITEMS OF WORK SPECIFIED.

THE CONTRACTOR SHALL COORDINATE CONSTRUCTION ACTIVITIES WITH THE UTILITY COMPANIES AND THE VILLAGES OF WILMETTE AND WINNETKA.

THE CONTRACTOR WILL NOT BE ALLOWED TO SET UP A YARD OR FIELD OFFICE ON STATE PROPERTY WITHOUT WRITTEN PERMISSION FROM THE DEPARTMENT.

BEFORE BEGINNING ANY WORK, THE CONTRACTOR SHALL RETAIN AND RECORD FOR FUTURE REFERENCE, ALL EXISTING PAVEMENT MARKING LINES (RAISED REFLECTIVE PAVEMENT MARKERS) IN ORDER THAT THESE LOCATIONS CAN BE RE-ESTABLISHED FOR STRIPING. EXACT LOCATIONS OF ALL PAVEMENT MARKINGS SHALL BE AS DIRECTED BY THE ENGINEER.

ANY DAMAGE TO EXISTING PAVEMENT MARKINGS OR RAISED REFLECTIVE PAVEMENT MARKERS OUTSIDE THE REMOVAL LINE SHOWN ON THE PLANS SHALL BE REPLACED AT THE CONTRACTOR'S EXPENSE.

ALL PAVEMENT PATCHING LOCATIONS WILL BE DETERMINED IN THE FIELD BY THE ENGINEER.

DRAINAGE ADJUSTMENT OR RECONSTRUCTION LOCATIONS WILL BE DETERMINED IN THE FIELD BY THE ENGINEER.

LOCATION OF COMBINATION CONCRETE CURB AND GUTTER REMOVAL AND REPLACEMENT (OR COMBINATION CURB AND GUTTER, WITH THE TYPE SPECIFIED ON THE PLANS), WILL BE DETERMINED IN THE FIELD BY THE ENGINEER.

FRAMES AND GRATES ADJUSTMENT OF PRIVATE UTILITIES WITHIN THE PROJECT LIMITS SHALL BE DONE BY THEIR RESPECTIVE OWNERS AND ARE NOT PART OF THIS CONTRACT.

THE CONTRACTOR SHALL CONTACT THE DISTRICT ONE TRAFFIC CONTROL CENTER AT (847) 705-4470 A MINIMUM OF 72 HOURS IN ADVANCE OF BEGINNING WORK.

PERMANENT PAVEMENT MARKINGS SHALL BE THERMOPLASTIC (OF THE EXTRUDED TYPE) AND SHOULD BE PLACED IN ACCORDANCE WITH THE "DISTRICT ONE TYPICAL PAVEMENT MARKINGS" DETAIL. (TC-13)

THE RESIDENT ENGINEER SHALL CONTACT CORY JUCIUS, ARTERIAL TRAFFIC ENGINEER, AT CORY.JUCIUS@ILLINOIS.GOV, A MINIMUM OF TWO (2) WEEKS PRIOR TO THE PLACEMENT OF PERMANENT PAVEMENT MARKINGS.

THE CONTRACTOR SHALL MAINTAIN PEDESTRIAN ACCESS AT ALL TIMES DURING CONSTRUCTION.

THE CONTRACTOR SHALL ERECT A TEMPORARY FENCE AROUND ALL TREES WITHIN THE CONSTRUCTION AREA TO ESTABLISH A "TREE PROTECTION ZONE" BEFORE ANY WORK BEGINS OR ANY MATERIAL IS DELIVERED TO THE JOBSITE. (A TEMPORARY FENCE SHOULD BE ERECTED ALONG THE DRIPLINE OF THE TREES AND SHRUBS WITHIN THE LIMITS OF CONSTRUCTION DESIGNATED TO REMAIN. IF EXISTING TREES AND SHRUBS ARE ADJACENT TO THE R.O.W., SUCH VEGETATION SHALL BE PROTECTED BY THE TEMPORARY FENCE AS WELL, WITH THE TEMPORARY FENCE BEING ERECTED WITHIN THE CONSTRUCTION LIMITS.) NO WORK IS TO BE PERFORMED (OTHER THAN ROOT PRUNING), MATERIALS STORED OR VEHICLES DRIVEN OR PARKED WITHIN THE "TREE PROTECTION ZONE." REMOVE PROTECTIVE TEMPORARY FENCE ONLY AFTER ALL CONSTRUCTION WORK HAS BEEN COMPLETED.

THE CONTRACTOR SHALL USE CARE IN GRADING OR EXCAVATING NEAR ANY AND ALL EXISTING ITEMS WHICH WILL NOT BE REMOVED. ANY DAMAGE DONE TO EXISTING ITEMS BY THE CONTRACTOR SHALL BE REPAIRED BY THE CONTRACTOR AT THE CONTRACTOR'S OWN EXPENSE.

TREE ROOT PRUNING IS TO BE USED ON EXISTING TREES TO PREVENT THE RIPPING UP OF ROOTS WHEN TRENCHING OR EXCAVATION IS WITHIN THE ROOT ZONE OF ADJACENT TREES TO REMAIN. SUPPLEMENTAL WATERING OF TREES SHOULD BEGIN IMMEDIATELY AFTER ROOT PRUNING OF THE TREES HAS OCCURED.

FILE NAME =	USER NAME = STEEDPA	DESIGNED -	REVISED -	<b>STATE OF ILLINOIS DEPARTMENT OF TRANSPORTATION</b>	<b>INDEX OF SHEETS, STATE STANDARDS AND GENERAL NOTES FAU 2807 (HIBBARD RD.) AT ILLINOIS ROAD</b>	F.A.U. RTE.	SECTION	COUNTY	TOTAL SHEETS	SHEET NO.
pr:\1\084E810\INTEG\Illinois.gov\FWIDOT\Documents\DOT Offices\District 1\Projects\P1470000\Design\P1470000-shr-cover.dgn		CHECKED -	REVISED -			2807	1819SW-TR	COOK	22	2
PLOT SCALE = 100.0000' / in.		DATE -	REVISED -			CONTRACT NO. 62F07				
PLOT DATE = 8/21/2017						ILLINOIS FED. AID PROJECT				



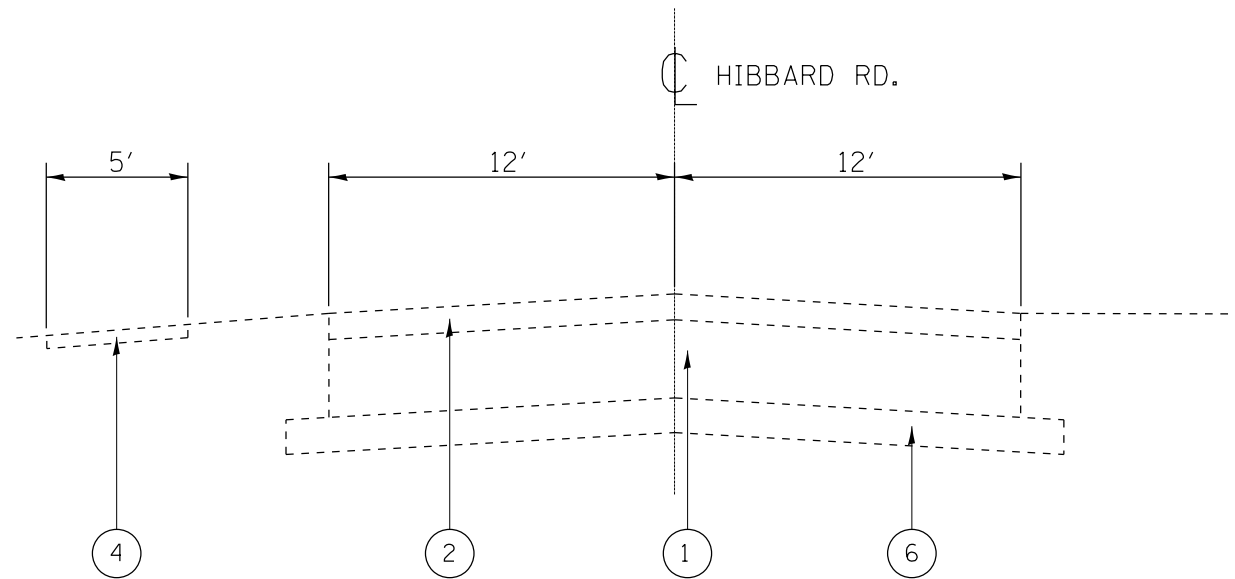
URBAN

SUMMARY OF QUANTITIES				CONSTRUCTION TYPE CODE					SUMMARY OF QUANTITIES				CONSTRUCTION TYPE CODE				
CODE NO	ITEM	UNIT	TOTAL QUANTITIES	80% FED 20% STATE 0021					CODE NO	ITEM	UNIT	TOTAL QUANTITIES					
*78000200	THERMOPLASTIC PAVEMENT MARKING - LINE 4"	FOOT	378	378													
*78000600	THERMOPLASTIC PAVEMENT MARKING - LINE 12"	FOOT	246	246													
*78000650	THERMOPLASTIC PAVEMENT MARKING - LINE 24"	FOOT	60	60													
X0320050	CONSTRUCTION LAYOUT (SPECIAL)	LSUM	1	1													
*X0325714	FLASHING BEACON, POST MOUNTED, SOLAR POWERED INSTALLATION	EACH	4	4													
*X0327980	PAVEMENT MARKING REMOVAL - WATER BLASTING	SO FT	492	492													
Z0004562	COMBINATION CONCRETE CURB AND GUTTER REMOVAL AND REPLACEMENT	FOOT	17	17													
Z0030850	TEMPORARY INFORMATION SIGNING	SO FT	102.8	102.8													
Z0064800	SELECTIVE CLEARING	UNIT	1	1													

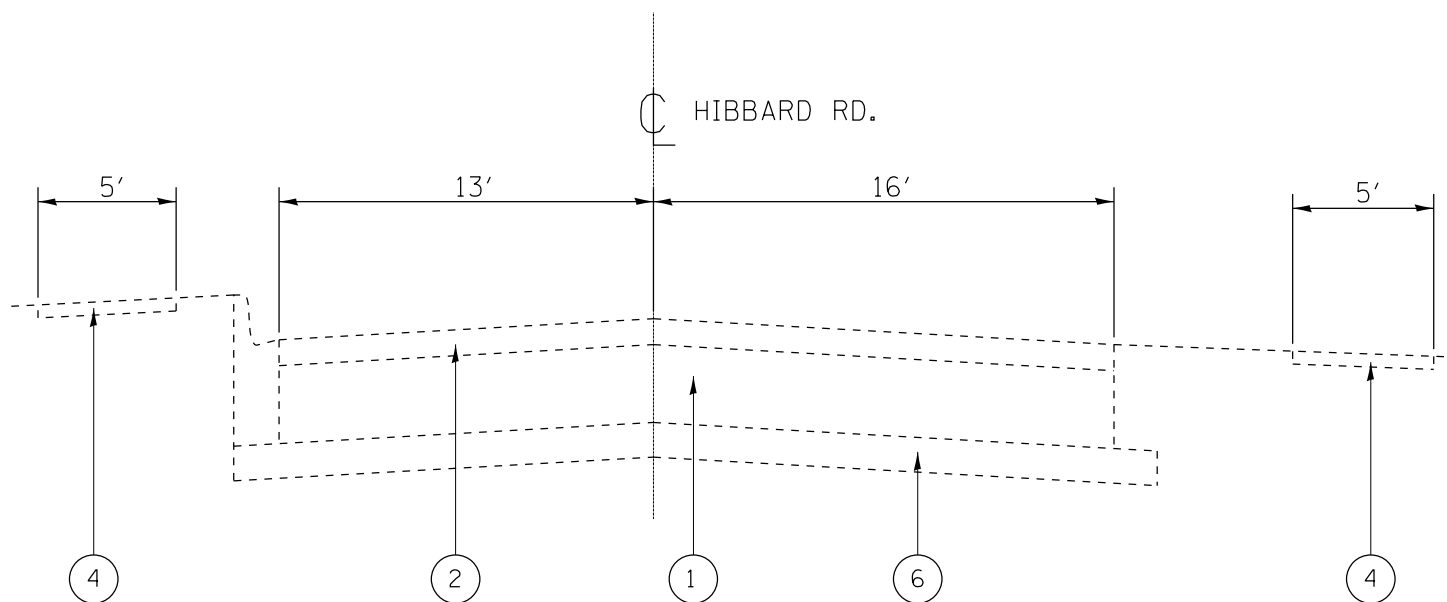
\* SPECIALTY ITEMS  
 NON-PARTICIPATING ITEMS

9

FILE NAME =	USER NAME = STEEDPA	DESIGNED -	REVISED -	<b>STATE OF ILLINOIS DEPARTMENT OF TRANSPORTATION</b>	<b>SUMMARY OF QUANTITIES FAU 2807 (HIBBARD RD.) AT ILLINOIS RD.</b>	FAU RTE.	SECTION	COUNTY	TOTAL SHEETS	SHEET NO.
Office\District\Projects\147009\CADD\Design\Plan\CD\2807.dgn	CHECKED -	REVISED -	2807			18195W-TR	COOK	22	4	
PLOT SCALE = 100,0000' / 1in.	DATE -	REVISED -	CONTRACT NO. 62F07							
PLOT DATE = 8/25/2017	DATE -	REVISED -	SCALE:			SHEET NO. OF SHEETS	STA. TO STA.	FED. ROAD DIST. NO. 1	ILLINOIS FED. AID PROJECT	



EXISTING TYPICAL SECTION  
STA. 49+00 TO 50+00



EXISTING TYPICAL SECTION  
STA. 50+00 TO 51+00

LEGEND:

- ① EXISTING P. C. C. PAVEMENT ±8"
- ② EXISTING HOT-MIX ASPHALT SURFACE, ±6"
- ③ EXISTING COMBINATION CONCRETE CURB & GUTTER, TYPE B-6.24
- ④ EXISTING SIDEWALK
- ⑤ EXISTING AGGREGATE SHOULDER
- ⑥ EXISTING STABILIZED SUB-BASE
- ⑦ PROPOSED P. C. C. SIDEWALK, 5'
- ⑧ PROPOSED COMBINATION CONCRETE CURB & GUTTER, TYPE B-6.24

MIXTURE REQUIREMENTS

MIXTURE TYPE	AIR VOIDS @ Ndes	OMP
<b>PAVEMENT PATCHING</b>		
HOT-MIX ASPHALT BINDER COURSE, 8" (IL-19MM)	4% @ 70 GYR.	QC / QA
HOT-MIX ASPHALT SURFACE COURSE, MIX "D", N70, 2" (IL-9.5MM)	4% @ 70 GYR.	QC / QA
OMP DESIGNATION: QUALITY CONTROL/ QUALITY ASSURANCE (QC/ QA)		

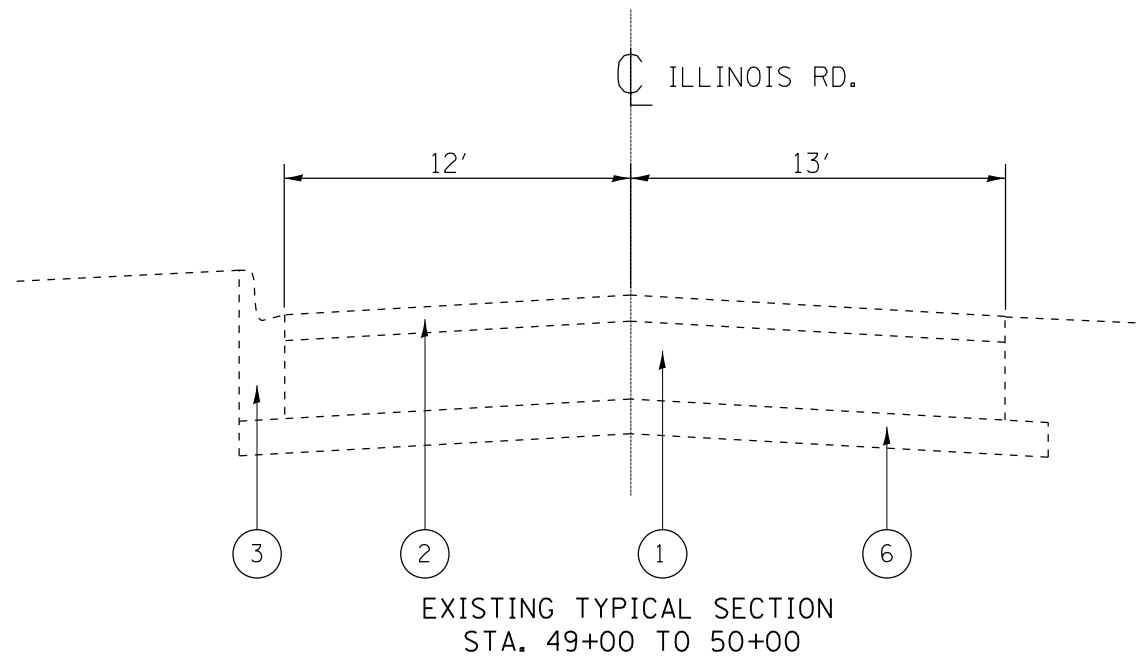
NOTES:

THE UNIT WEIGHT USED TO CALCULATE ALL HOT-MIX ASPHALT QUANTITIES IS 112 LBS./SQ. YD./ IN.

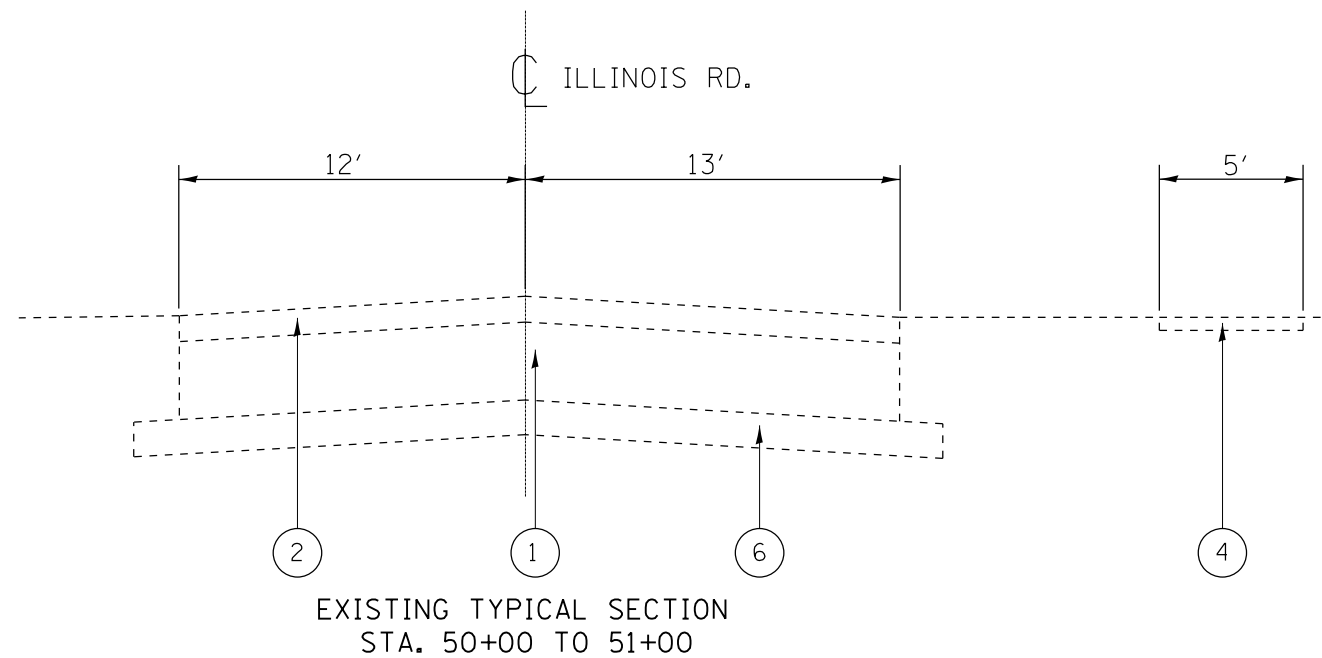
THE "AC TYPE" FOR POLYMERIZED HMA MIXES SHALL BE "SBS/SBR PG 76 -22" AND FOR NON-POLYMERIZED HMA THE "AC TYPE" SHALL BE "PG 64 -22" UNLESS MODIFIED BY DISTRICT ONE SPECIAL PROVISIONS.

QUALITY MANAGEMENT PROGRAM (OMP) IDENTIFIES THE PARTICULAR QUALITY CONTROL SPECIFICATION THAT APPLIES TO THE HMA MIXTURE

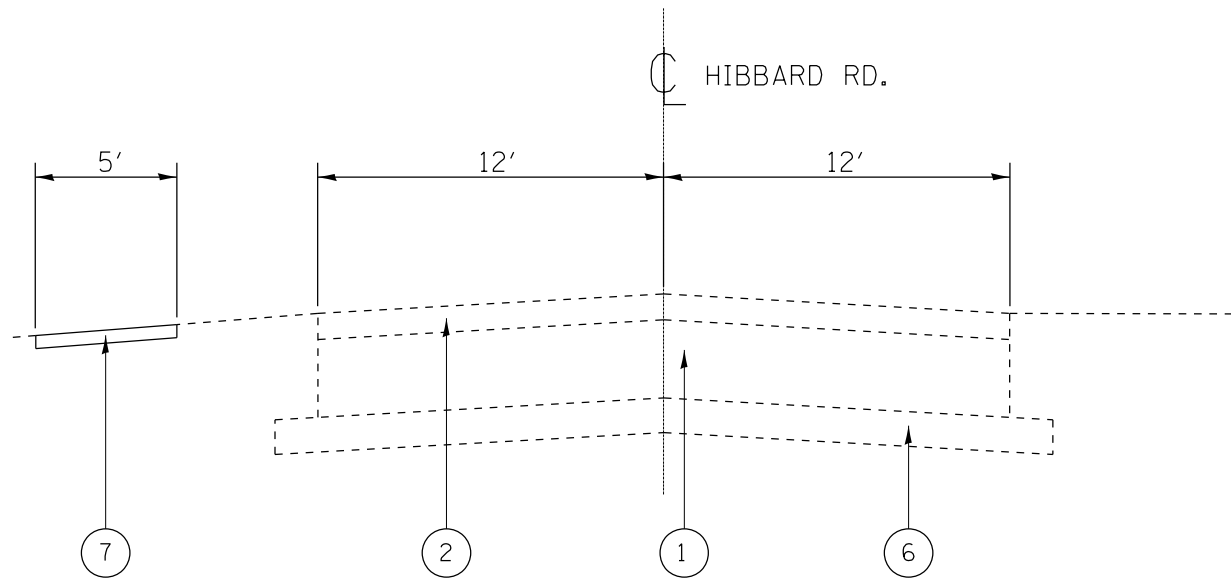
FOR USE OF RECYCLED MATERIALS SEE SPECIAL PROVISIONS



- LEGEND:**
- ① EXISTING P.C.C. PAVEMENT ±8"
  - ② EXISTING HOT-MIX ASPHALT SURFACE, ±6"
  - ③ EXISTING COMBINATION CONCRETE CURB & GUTTER, TYPE B-6.24
  - ④ EXISTING SIDEWALK
  - ⑤ EXISTING AGGREGATE SHOULDER
  - ⑥ EXISTING STABILIZED SUB-BASE
  - ⑦ PROPOSED P.C.C. SIDEWALK, 5'
  - ⑧ PROPOSED COMBINATION CONCRETE CURB & GUTTER, TYPE B-6.24



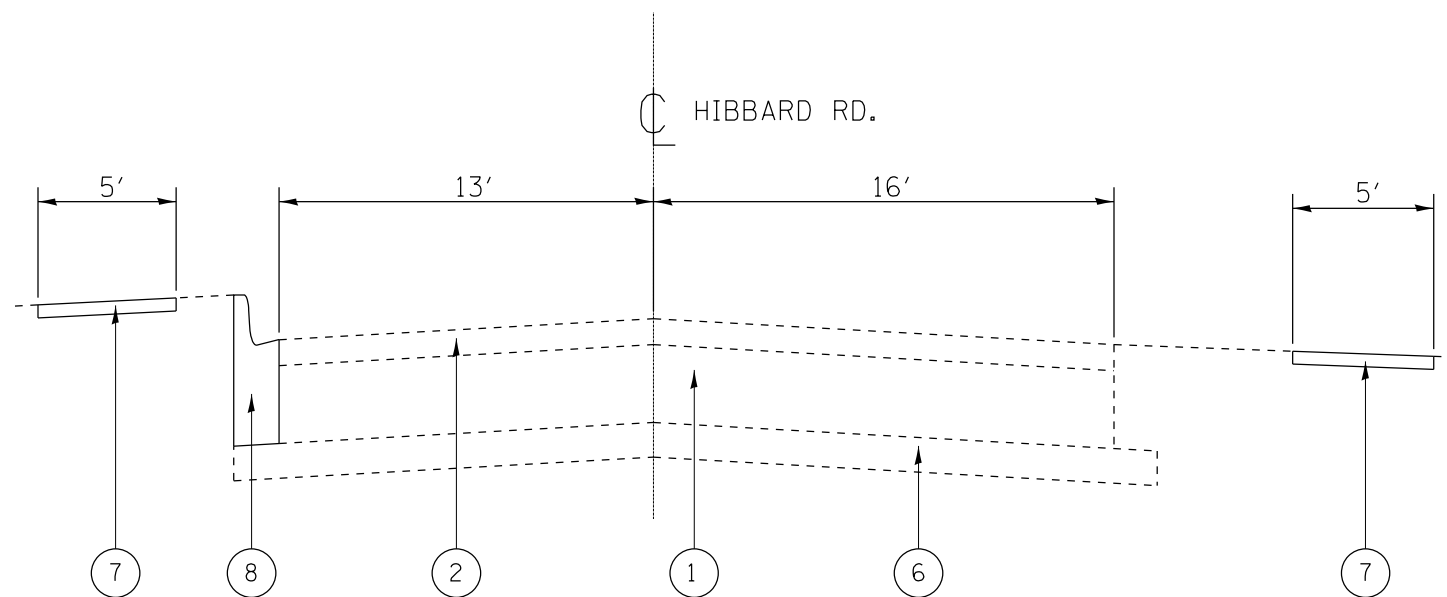
FILE NAME =	USER NAME = STEEDPA	DESIGNED -	REVISED -	<b>STATE OF ILLINOIS DEPARTMENT OF TRANSPORTATION</b>	<b>EXISTING AND PROPOSED TYPICAL SECTIONS FAU 2807 (HIBBARD RD.) AT ILLINOIS RD.</b>	F.A.U. RTÉ.	SECTION	COUNTY	TOTAL SHEETS	SHEET NO.
p:\11\084EBIDINTEG.illinois.gov\PWIDOT\Documents\IDOT Offices\District 1\Projects\P147000\Drawings\Design\P147009-sht-cover.dgn		CHECKED -	REVISED -			2807	1819SW-TR	COOK	22	6
PLOT SCALE = 100.0000' / in.		DATE -	REVISED -			CONTRACT NO. 62F07				
PLOT DATE = 8/15/2017						SCALE:	SHEET NO.	OF SHEETS	STA.	TO STA.



PROPOSED TYPICAL SECTION  
STA. 49+00 TO 50+00

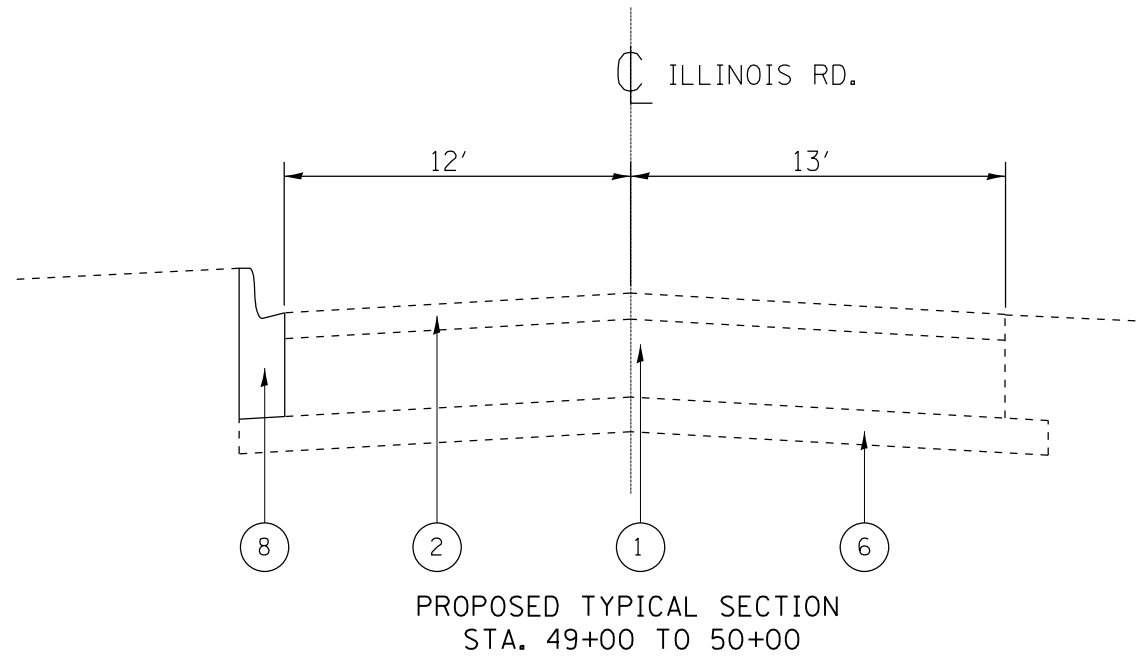
LEGEND:

- ① EXISTING P. C. C. PAVEMENT ±8"
- ② EXISTING HOT-MIX ASPHALT SURFACE, ±6"
- ③ EXISTING COMBINATION CONCRETE CURB & GUTTER, TYPE B-6.24
- ④ EXISTING SIDEWALK
- ⑤ EXISTING AGGREGATE SHOULDER
- ⑥ EXISTING STABILIZED SUB-BASE
- ⑦ PROPOSED P. C. C. SIDEWALK, 5'
- ⑧ PROPOSED COMBINATION CONCRETE CURB & GUTTER, TYPE B-6.24



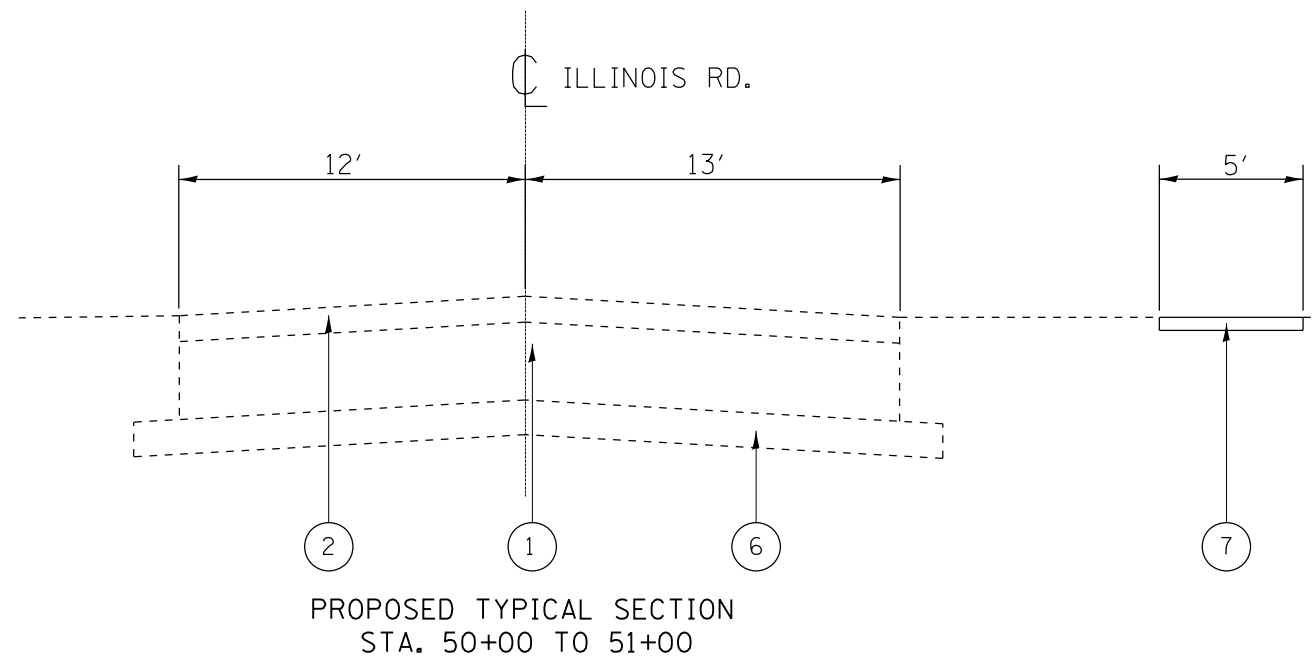
PROPOSED TYPICAL SECTION  
STA. 50+00 TO 51+00

FILE NAME =	USER NAME = STEEDPA	DESIGNED -	REVISED -	<b>STATE OF ILLINOIS DEPARTMENT OF TRANSPORTATION</b>	<b>EXISTING AND PROPOSED TYPICAL SECTIONS FAU 2807 (HIBBARD RD.) AT ILLINOIS RD.</b>	F.A.U. RTE.	SECTION	COUNTY	TOTAL SHEETS	SHEET NO.	
p:\11\084EBIDINTEG.illinois.gov\PI\DOT\Documents\DOT Offices\District 1\Projects\P14700\DRAWING>Data\Design\P147009-sht-cover.dgn		CHECKED -	REVISED -			2807	1819SW-TR	COOK	22	7	
PLOT SCALE = 100.0000' / 1in.		DATE -	REVISED -			CONTRACT NO. 62F07					
PLOT DATE = 8/15/2017						SCALE:	SHEET NO.	OF SHEETS	STA.	TO STA.	ILLINOIS FED. AID PROJECT



**LEGEND:**

- ① EXISTING P.C.C. PAVEMENT ±8"
- ② EXISTING HOT-MIX ASPHALT SURFACE, ±6"
- ③ EXISTING COMBINATION CONCRETE CURB & GUTTER, TYPE B-6.24
- ④ EXISTING SIDEWALK
- ⑤ EXISTING AGGREGATE SHOULDER
- ⑥ EXISTING STABILIZED SUB-BASE
- ⑦ PROPOSED P.C.C. SIDEWALK, 5'
- ⑧ PROPOSED COMBINATION CONCRETE CURB & GUTTER, TYPE B-6.24



FILE NAME =	USER NAME = STEEDPA	DESIGNED -	REVISED -
p:\11\084EBIDINTEG.illinois.gov\PWIDOT\Documents\DOT Offices\District 1\Projects\P147009\Drawings\Design\P147009-sht-cover.dgn		CHECKED -	REVISED -
		DATE -	REVISED -

**STATE OF ILLINOIS  
DEPARTMENT OF TRANSPORTATION**

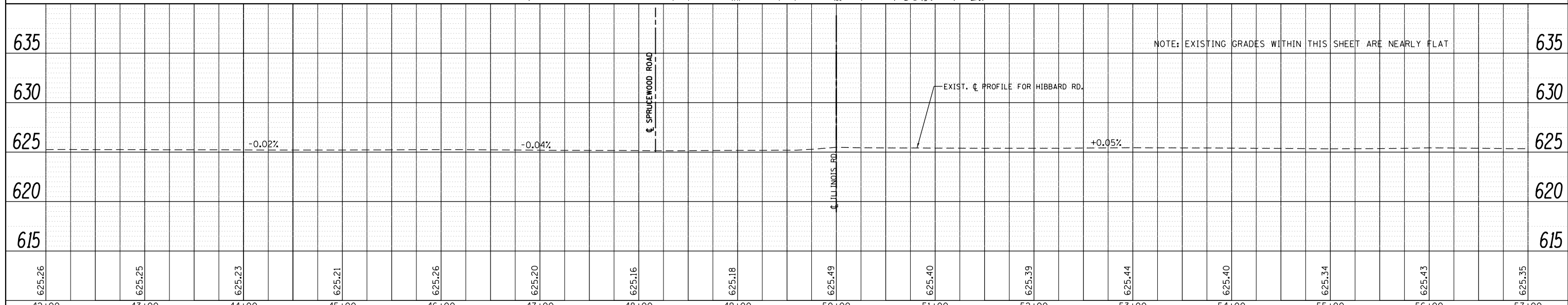
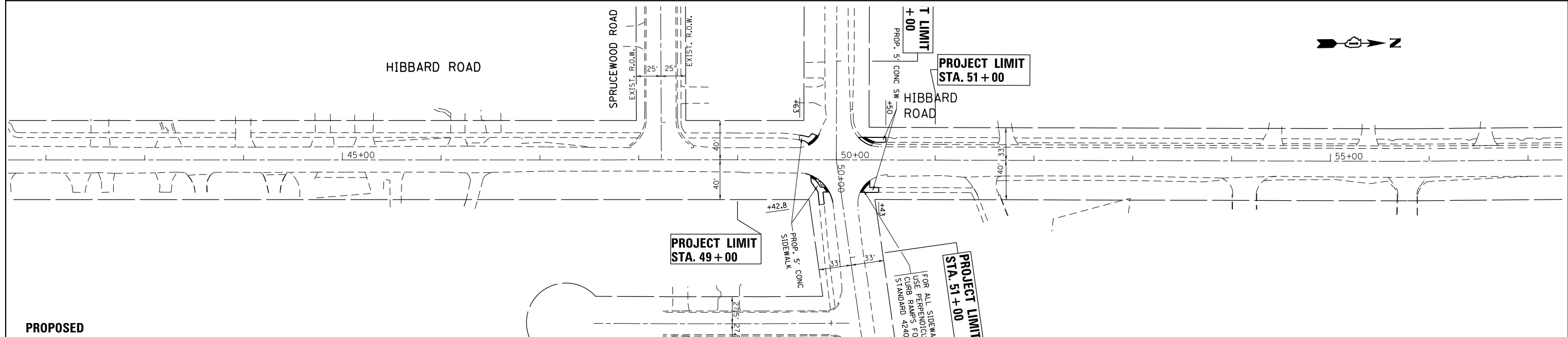
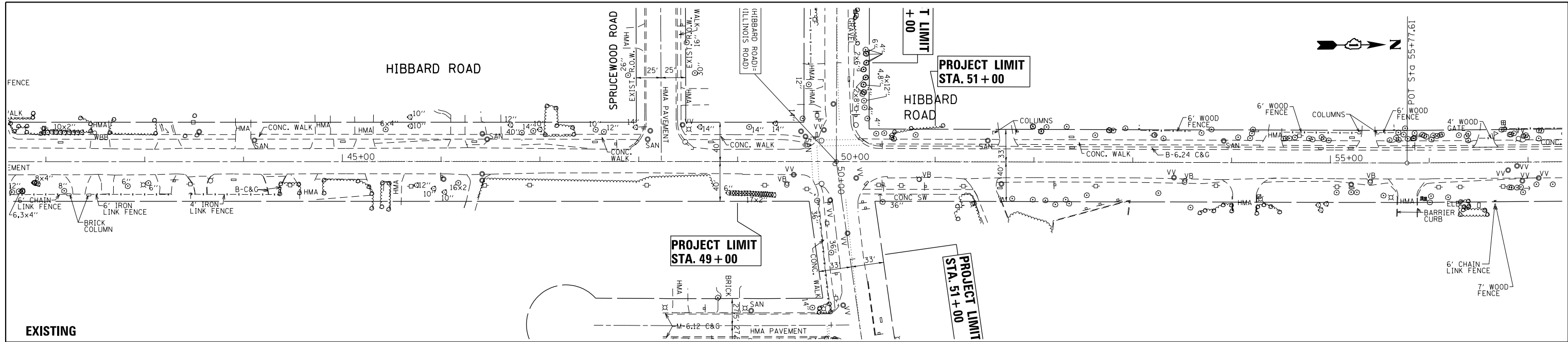
<b>EXISTING AND PROPOSED TYPICAL SECTIONS</b>			
<b>FAU 2807 (HIBBARD RD.) AT ILLINOIS RD.</b>			
SCALE:	SHEET NO.	OF SHEETS	STA. TO STA.

F.A.U. RTE.	SECTION	COUNTY	TOTAL SHEETS	SHEET NO.
2807	1819SW-TR	COOK	22	8
CONTRACT NO. 62F07				
ILLINOIS FED. AID PROJECT				



DATE	BY	SURVEYED	ALIGNED	CHECKED	DESIGNED
PLAN	NOTE BOOK NO.	NO.			

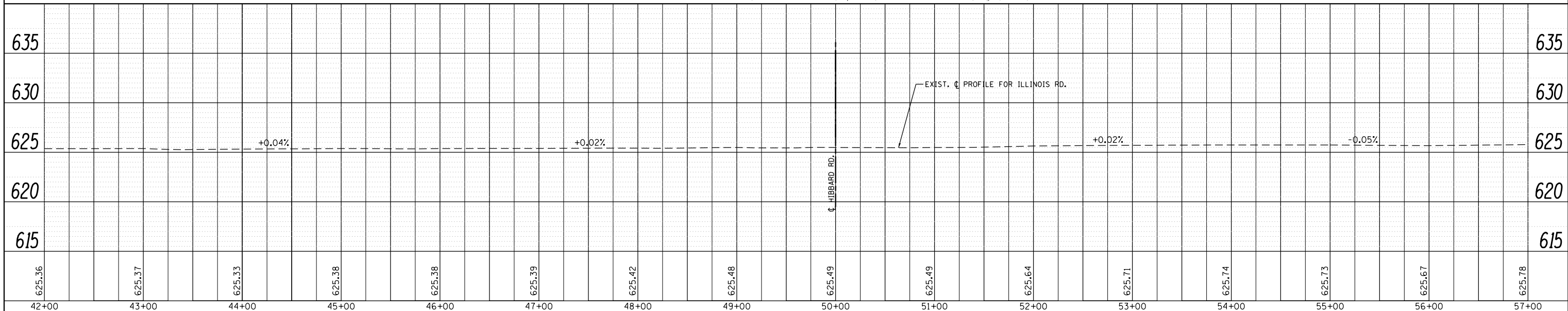
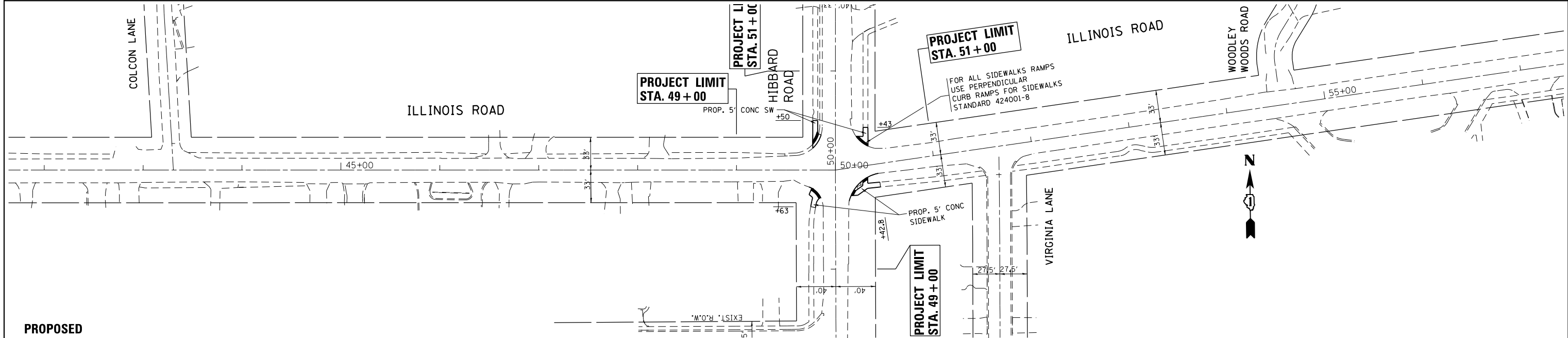
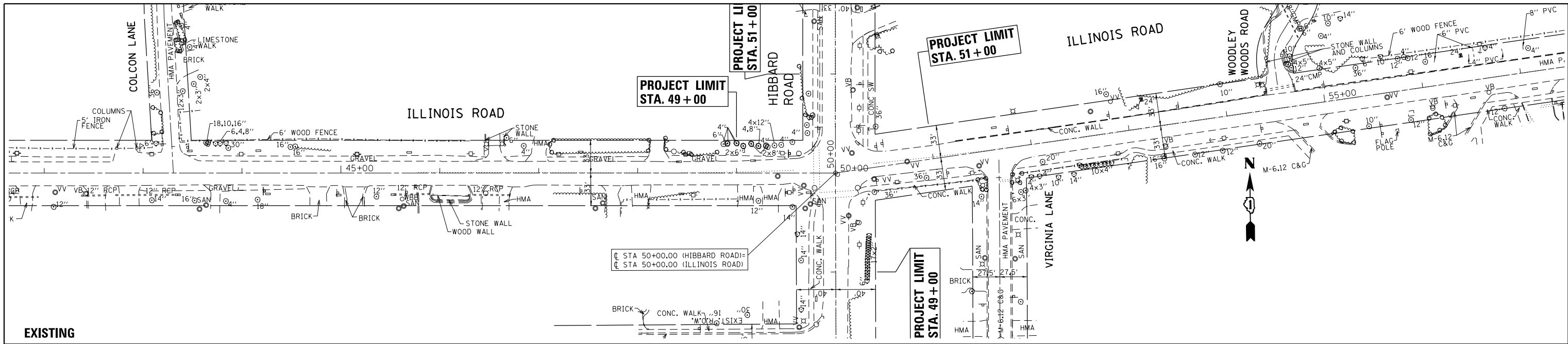
DATE	BY	SURVEYED	GRADES CHECKED	STRUCTURE NOTATIONS CHECKED
PROFILE	NOTE BOOK NO.	NO.		



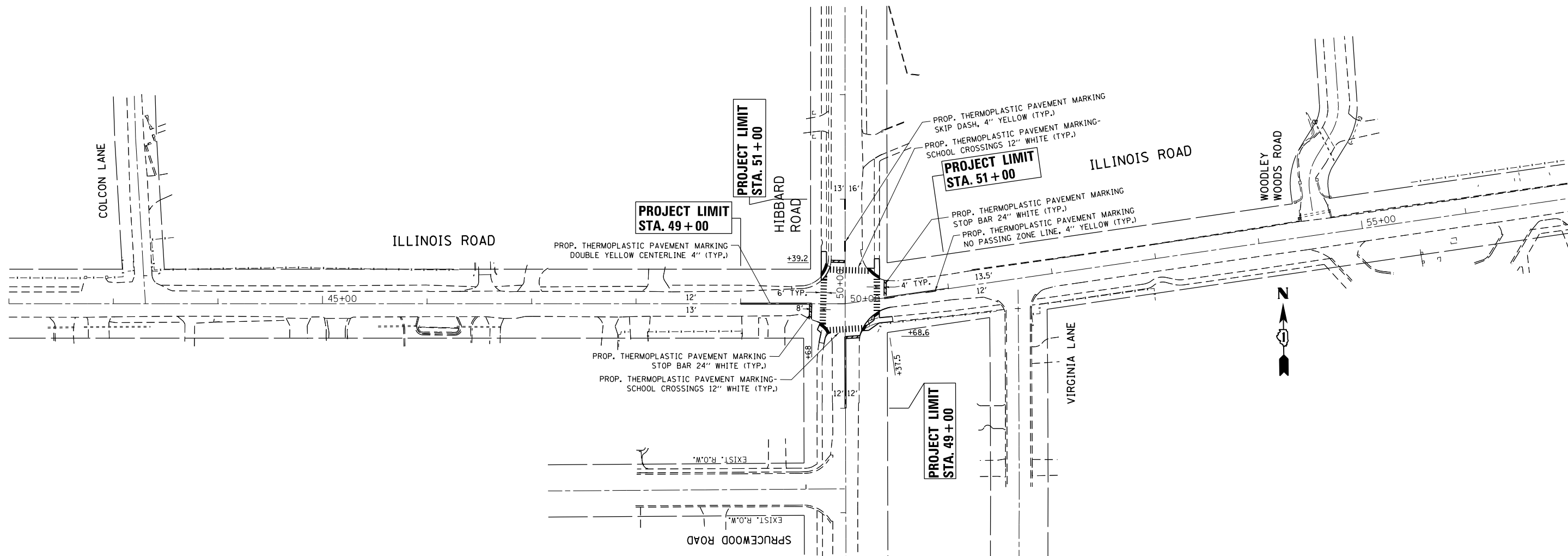
625.26	625.25	625.23	625.21	625.26	625.20	625.16	625.18	625.19	625.40	625.39	625.44	625.40	625.34	625.43	625.35
42+00	43+00	44+00	45+00	46+00	47+00	48+00	49+00	50+00	51+00	52+00	53+00	54+00	55+00	56+00	57+00

DATE	
BY	
SURVEYED	
PLOTTED	
ALIGNED	
CHECKED	
DESIGNED	
FILE NAME	
PLAN NO.	
NOTE BOOK NO.	

DATE	
BY	
SURVEYED	
PLOTTED	
GRADES CHECKED	
STRUCTURE NOTATIONS CHECKED	
PROFILE NO.	
NOTE BOOK NO.	



FILE NAME =	USER NAME = STEEDPA	DESIGNED -	REVISED -	<b>STATE OF ILLINOIS</b> <b>DEPARTMENT OF TRANSPORTATION</b>	<b>ROADWAY PLAN AND PROFILE</b> <b>ILLINOIS ROAD AT HIBBARD ROAD</b>				F.A.U. RE.	SECTION	COUNTY	TOTAL SHEETS	SHEET NO.
		CHECKED -	REVISED -		2807	1819SW-TR	COOK	22	10				
		DATE -	REVISED -		SCALE: 1"=50'    SHEET    OF    SHEETS    STA.    TO    STA.				CONTRACT NO. 62F07				
					ILLINOIS FED. AID PROJECT								



MODEL: Default  
 FILE: \\nas01.cas.usg.edu\B&E\BID\NTEC\Illinois\gov\PIV\DOT\Documents\1\DOT\Office\BID\refct\_1\Projects\177009\CADD\DATA\CAD\hearsp177009-sh-pmk.dgn

USER NAME = STEEDPA	DESIGNED -	REVISED -
	DRAWN -	REVISED -
PLOT SCALE = 100,0000' / in.	CHECKED -	REVISED -
PLOT DATE = 8/16/2017	DATE -	REVISED -

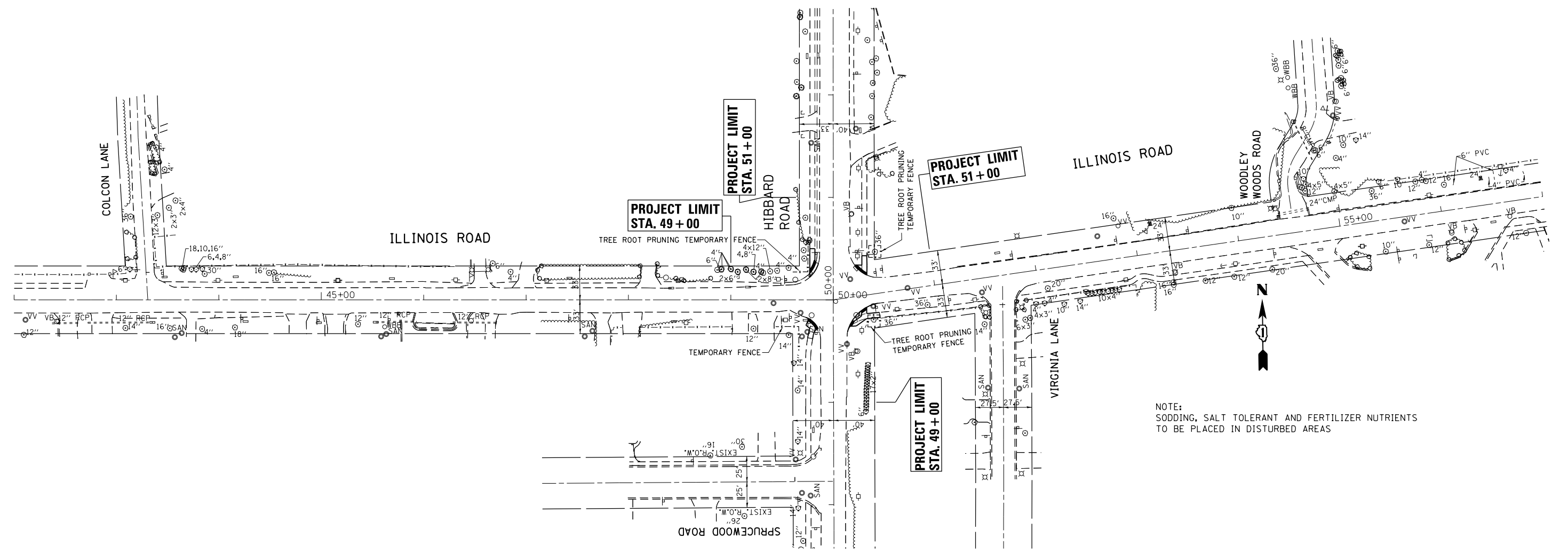
**STATE OF ILLINOIS**  
**DEPARTMENT OF TRANSPORTATION**

**PAVEMENT MARKING PLAN**  
**HIBBARD ROAD AT ILLINOIS ROAD**

SCALE: 1"=50'      SHEET      OF      SHEETS      STA.      TO      STA.

F.A.U. RTE.	SECTION	COUNTY	TOTAL SHEETS	SHEET NO.
2807	1819SW-TR	COOK	22	11
CONTRACT NO. 62F07				
ILLINOIS FED. AID PROJECT				

MODEL: Default  
 FILE: \\mhc-pw\ulb\B&E\ID\ITEC\Illinois\gov\PIWD\DOT\Documents\1\DOT\Office\11817009\CADD\DATA\CAD\Sheet\PI17009-sh-1-landscap.dgn



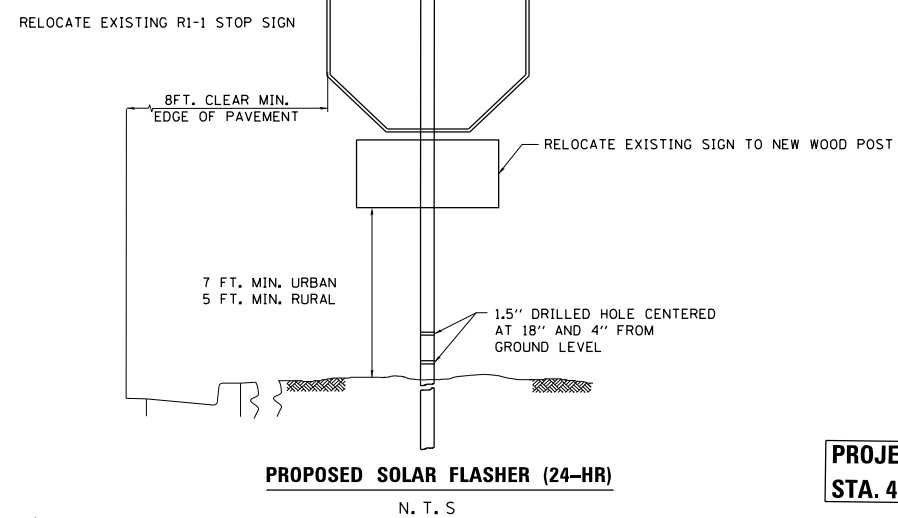
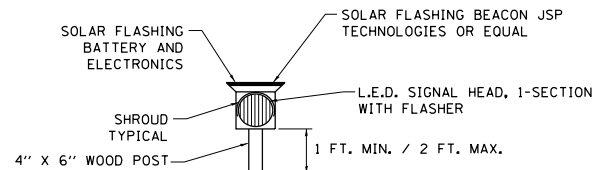
USER NAME = STEEDPA	DESIGNED -	REVISED -
	DRAWN -	REVISED -
PLOT SCALE = 100,0000' / in.	CHECKED -	REVISED -
PLOT DATE = 8/16/2017	DATE -	REVISED -

**STATE OF ILLINOIS  
 DEPARTMENT OF TRANSPORTATION**

**LANDSCAPING PLAN  
 HIBBARD ROAD AT ILLINOIS ROAD**

SCALE: 1"=50' SHEET OF SHEETS STA. TO STA.

F.A.U. RTE.	SECTION	COUNTY	TOTAL SHEETS	SHEET NO.
2807	1819SW-TR	COOK	22	12
CONTRACT NO. 62F07				
ILLINOIS FED. AID PROJECT				



**PROPOSED SOLAR FLASHER (24-HR)**  
N. T. S.

**PROJECT LIMIT  
STA. 49+00**

**PROJECT LIMIT  
STA. 51+00**

**PROJECT LIMIT  
STA. 51+00**

**PROJECT LIMIT  
STA. 49+00**

**SCHEDULE OF QUANTITIES**

ITEM DESCRIPTION	UNIT	TOTAL QTY.
RELOCATE SIGN PANEL ASSEMBLY, TYPE B	EACH	4
REMOVE SIGN PANEL ASSEMBLY, TYPE B	EACH	4
WOOD SIGN SUPPORT	FOOT	70
SOLAR POWERED FLASHING BEACON INSTALLATION	EACH	4

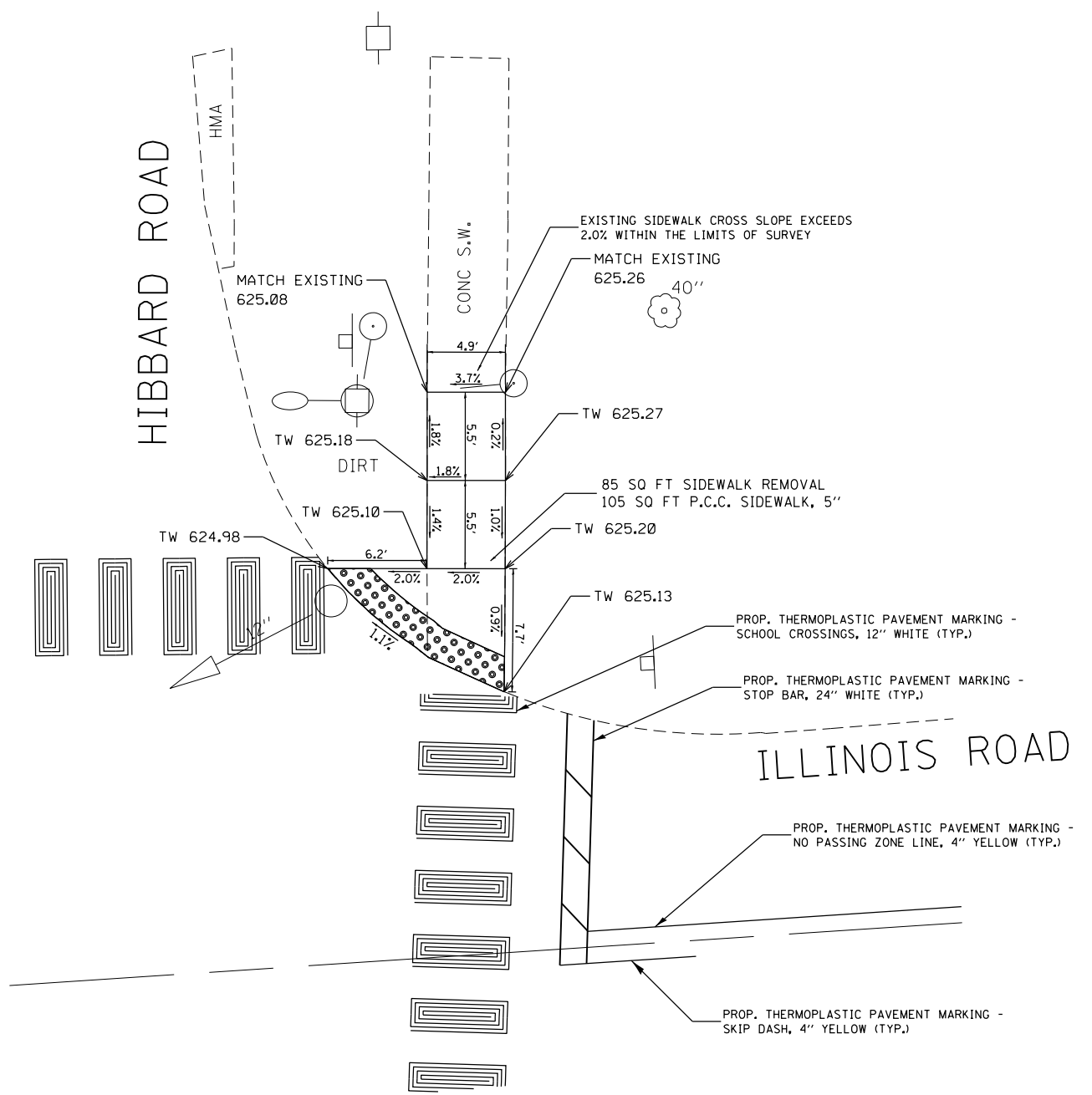
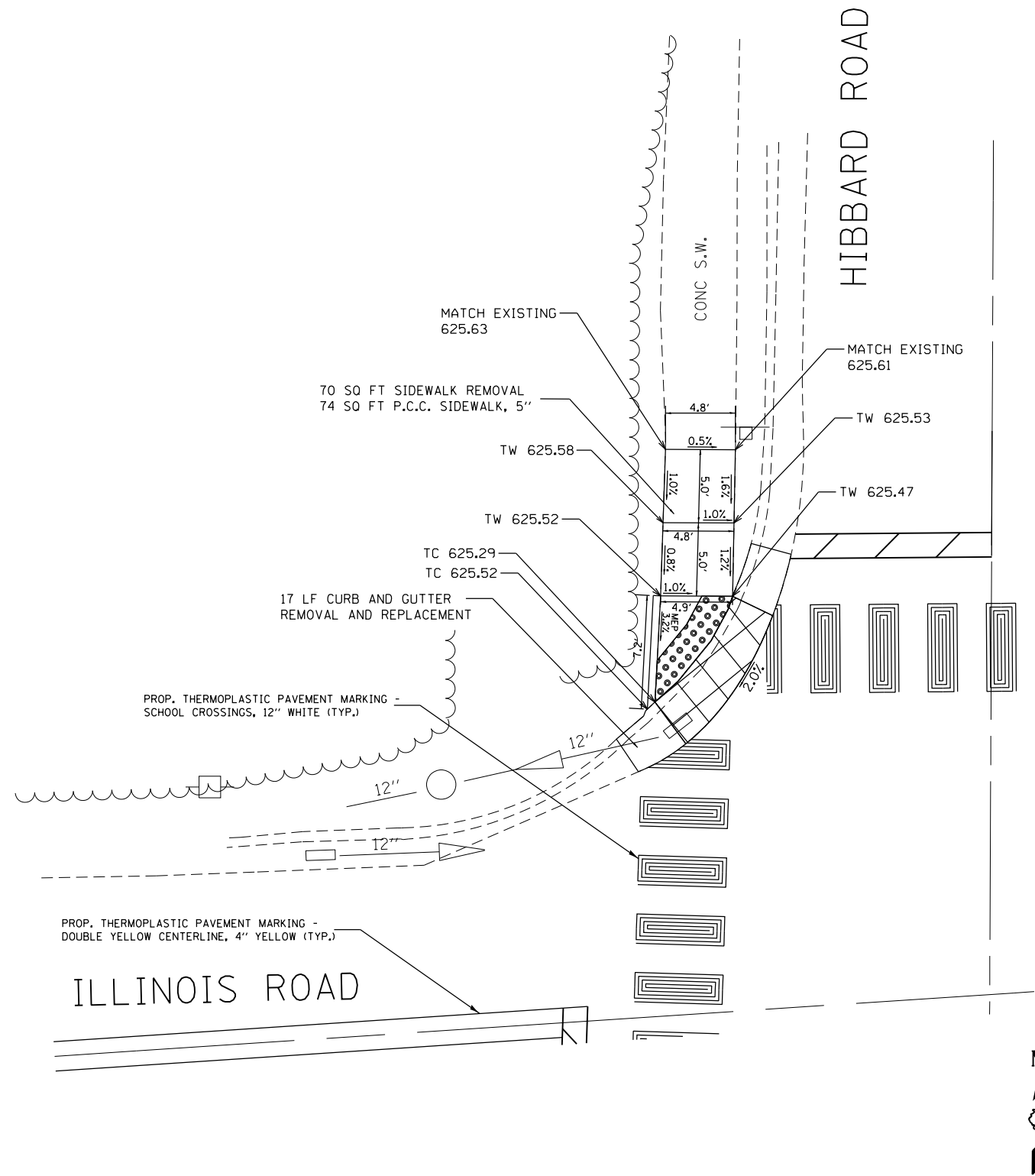
MODEL: Default  
 FILE: \\nas01\B&E\ID\NTEC\Illinois\gov\PIWDOT\Documents\DOT\_Offices\Director\1\Projects\IP147009\CADD\as\Des\p147009-plt-cover.dgn

**STATE OF ILLINOIS  
DEPARTMENT OF TRANSPORTATION**

**PROPOSED TRAFFIC PLAN  
HIBBARD ROAD AT ILLINOIS ROAD**

SCALE: 1"= 20' SHEET OF SHEETS STA. TO STA.

F.A.U. RTE.	SECTION	COUNTY	TOTAL SHEETS	SHEET NO.
2807	1819SW-TR	COOK	22	13
CONTRACT NO. 62F07				
ILLINOIS FED. AID PROJECT				

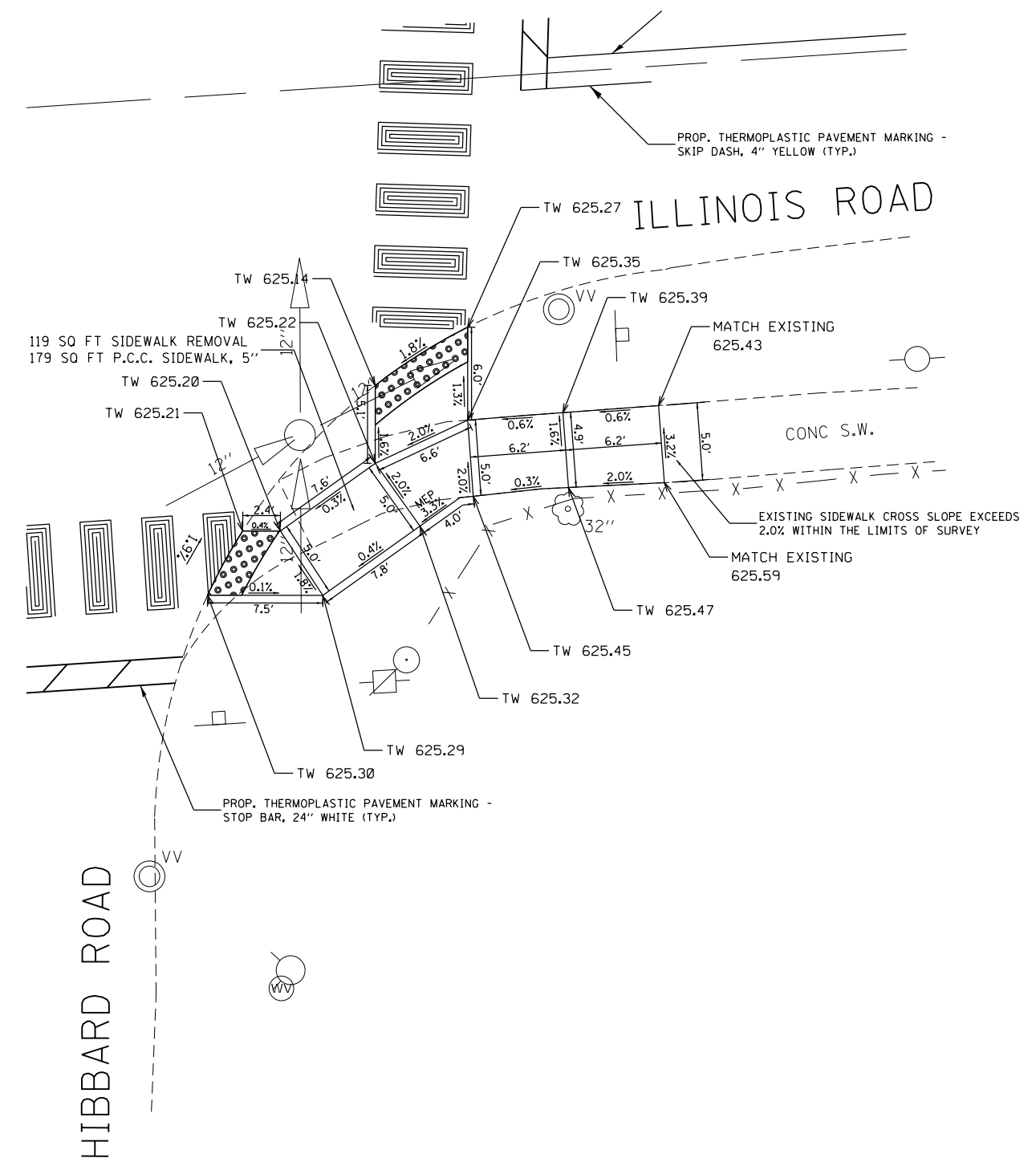
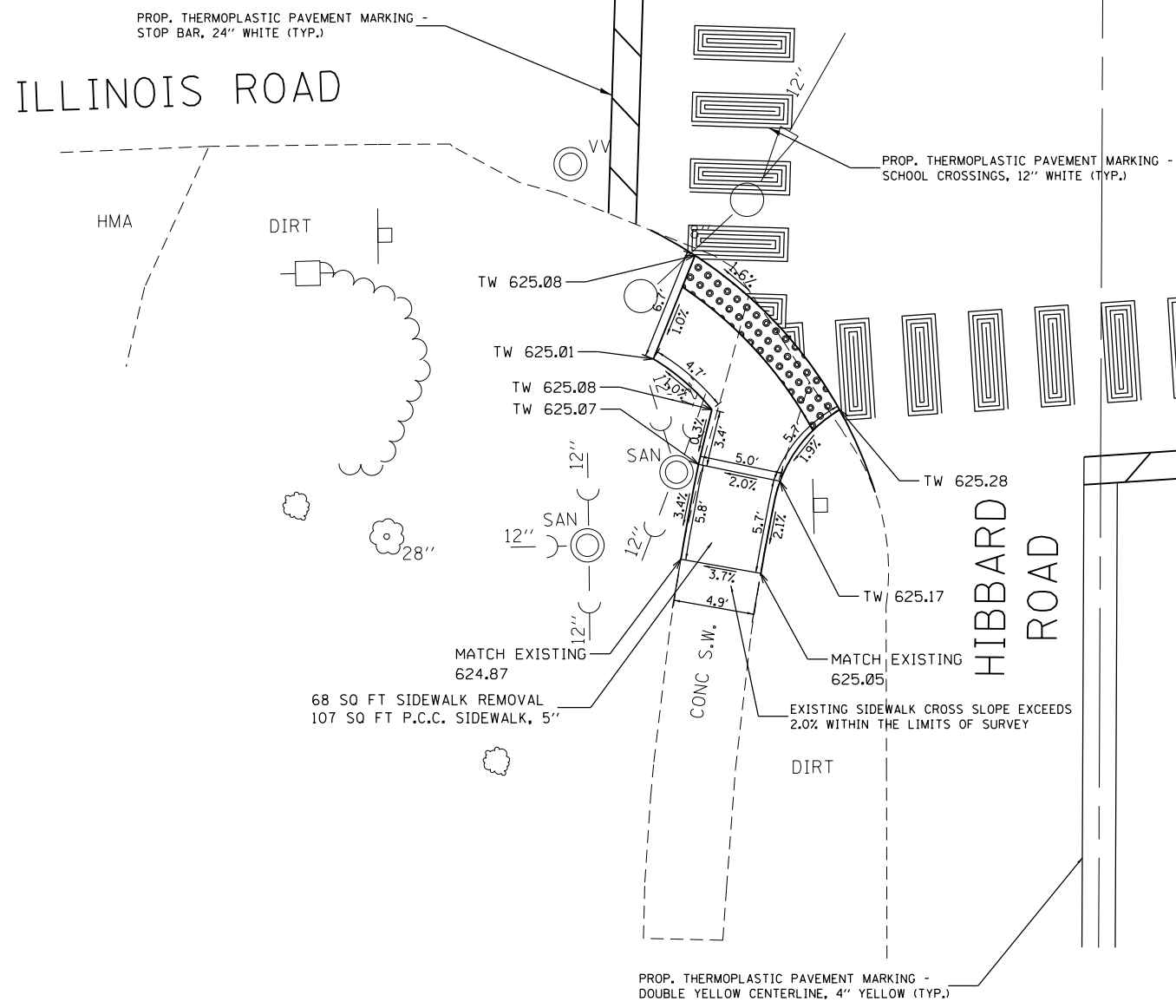


REFERENCE BENCH MARK ELEV 627.77  
 BENCHMARK : SET "X" CUT ON NORTHWEST BOLT OF FIRE HYDRANT  
 LOCATION : FIRE HYDRANT LOCATED AT THE SOUTHEAST CORNER OF HIBBARD RD.  
 AND ILLINOIS RD.

**LEGEND**

<span style="border: 1px solid black; padding: 2px;">xx.xx'</span>	EXISTING LENGTH		PROPOSED SIDEWALK
	PROPOSED SIDE CURB		DETECTABLE WARNINGS
( )	EXISTING ELEVATION/SLOPE		SIDEWALK REMOVAL REPLACE W/TOPSOIL & SOD

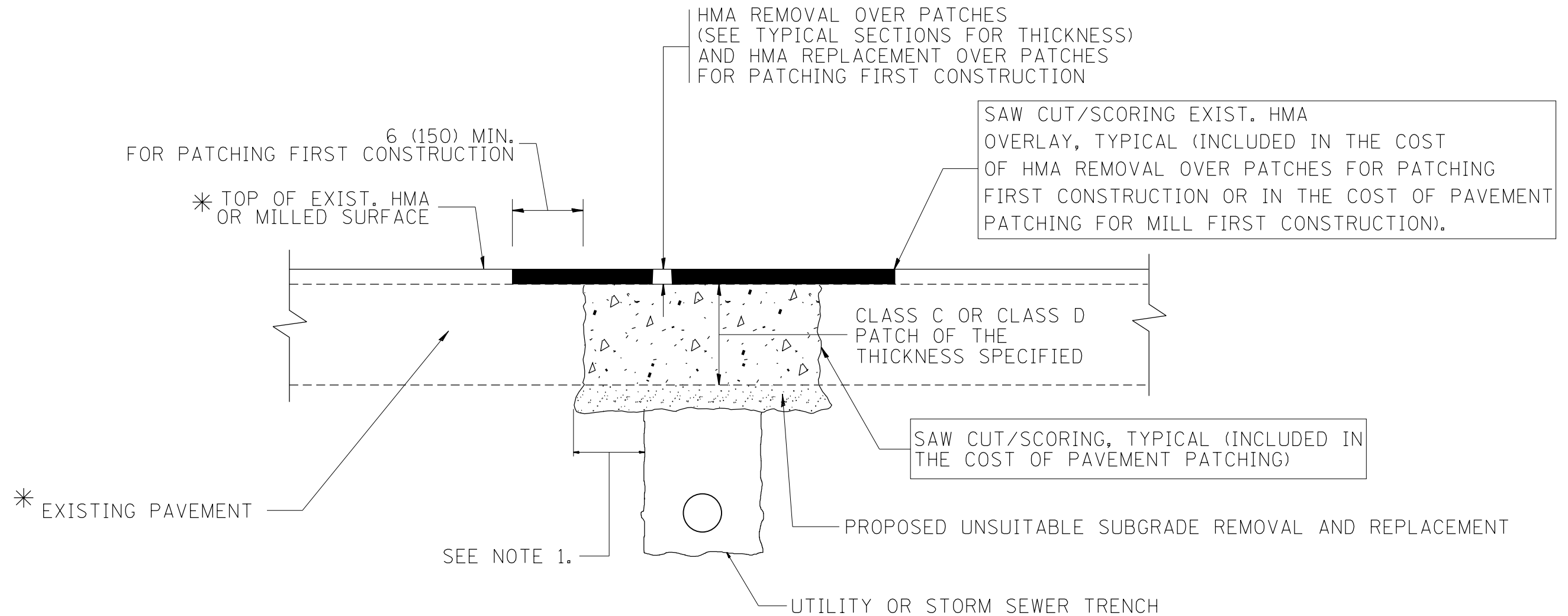
REFERENCE BENCH MARK ELEV 627.77  
 BENCHMARK : SET "X" CUT ON NORTHWEST BOLT OF FIRE HYDRANT  
 LOCATION : FIRE HYDRANT LOCATED AT THE SOUTHEAST CORNER OF HIBBARD RD.  
 AND ILLINOIS RD.



REFERENCE BENCH MARK ELEV 627.77  
 BENCHMARK : SET "X" CUT ON NORTHWEST BOLT OF FIRE HYDRANT  
 LOCATION : FIRE HYDRANT LOCATED AT THE SOUTHEAST CORNER OF HIBBARD RD.  
 AND ILLINOIS RD.

LEGEND	
xx.xx'	EXISTING LENGTH
==	PROPOSED SIDE CURB
( )	EXISTING ELEVATION/SLOPE
[Empty Box]	PROPOSED SIDEWALK
[Dotted Box]	DETECTABLE WARNINGS
[Cross-hatched Box]	SIDEWALK REMOVAL REPLACE W/TOPSOIL & SOD

REFERENCE BENCH MARK ELEV 627.77  
 BENCHMARK : SET "X" CUT ON NORTHWEST BOLT OF FIRE HYDRANT  
 LOCATION : FIRE HYDRANT LOCATED AT THE SOUTHEAST CORNER OF HIBBARD RD.  
 AND ILLINOIS RD.



\* SEE TYPICAL SECTIONS FOR THICKNESS AND MATERIALS

**NOTES:**

1. THE WIDTH OF THE FULL DEPTH PATCH OVER A TRENCH SHALL BE 12 (300) WIDER ON EACH SIDE OF THE TRENCH.
2. FOR METHOD OF MEASUREMENT AND BASIS OF PAYMENT, SEE RECURRING SPECIAL PROVISION "PATCHING WITH HOT-MIX ASPHALT OVERLAY REMOVAL".

SEQUENCE OF CONSTRUCTION (PATCHING FIRST)

1. REMOVE THE EXISTING HMA MATERIAL OVER THE AREA TO BE PATCHED.
2. REMOVE AND REPLACE WITH CLASS C OR D PATCH.
3. REPLACE HMA MATERIAL OVER THE AREA TO BE PATCHED.

SEQUENCE OF CONSTRUCTION (MILLING FIRST)

1. MILL HMA FIRST IF THERE IS AT LEAST 4 1/2 INCHES OR MORE OF HMA MATERIAL ON TOP OF THE EXISTING PAVEMENT OR IF THE PAVEMENT IS FULL DEPTH HMA. A MINIMUM OF 2 INCHES OF HMA MATERIAL SHALL BE IN PLACE AFTER MILLING.
2. REMOVE AND REPLACE WITH FULL DEPTH CLASS D PATCHES TO TOP OF MILLED SURFACE.

ALL DIMENSIONS ARE IN INCHES (MILLIMETERS) UNLESS OTHERWISE SHOWN.

FILE NAME =	USER NAME = STEEDPA	DESIGNED - R. SHAH	REVISED - A. ABBAS 04-27-98	<b>STATE OF ILLINOIS DEPARTMENT OF TRANSPORTATION</b>	<b>PAVEMENT PATCHING FOR HMA SURFACED PAVEMENT</b>	F.A.U. RTE.	SECTION	COUNTY	TOTAL SHEETS	SHEET NO.
pw\ill084EBIDINTEG.illinois.gov\PIWIDOT\Documents\IDOT Offices\District 1\Projects\PI4700\Drawings\Design\DistStd.dgn		REVISION	REVISED - R. BORO 01-01-07			2807	1819SW-TR	COOK	22	16
PLOT SCALE = 100.0000' / 1" =	CHECKED -	REVISED - R. BORO 09-04-07	<b>BD400-04 (BD-22)</b>			<b>CONTRACT NO. 62F07</b>				
PLOT DATE = 7/28/2017	DATE - 10-25-94	REVISED - K. ENG 10-27-08	SCALE: NONE			SHEET NO. 1 OF 1 SHEETS	STA.	TO STA.	FED. ROAD DIST. NO. 1   ILLINOIS   FED. AID PROJECT	



VARIABLE - TO MEET EXISTING DIMENSIONS AND FIELD CONDITIONS (SEE NOTE ②)

PROP. CONC. CURB OR CURB AND GUTTER REPLACEMENT IN ACCORDANCE WITH STATE STANDARD 606001. (SEE NOTE ②)

SAW CUT FULL DEPTH - INCLUDED IN THE COST OF SIDEWALK, DRIVEWAY OR MEDIAN SURFACE REMOVAL PAY ITEM.

SEE STATE STANDARD 606001  
EXISTING OR PROPOSED HMA SURFACE (IF APPLICABLE)

18" (450) MAX.

1/4" (5) \*\*

EXISTING SIDEWALK, DRIVEWAY, MEDIAN SURFACE, SOD OR GROUND.

PROPOSED SIDEWALK, DRIVEWAY PAVEMENT, MEDIAN SURFACE OR SODDING SALT TOLERANT WITH TOP SOIL, 4" (100) SOD RESTORATION (SEE NOTE ①).

EXISTING CONCRETE PAVEMENT, CONCRETE BASE COURSE OR FLEXIBLE PAVEMENT

3" (75) MIN.

SUITABLE BACKFILL MATERIAL (INCLUDED IN THE COST OF CURB OR CURB AND GUTTER REMOVAL AND REPLACEMENT)

PROPOSED 3/4" (20) PREFORMED EXPANSION JOINT AT CONCRETE SIDEWALKS, DRIVEWAYS, AND MEDIANS. (INCLUDED IN THE COST OF CURB OR CURB AND GUTTER REMOVAL AND REPLACEMENT.)

\* 3" (75) MINIMUM FROM TOP AND BOTTOM OF THE CONCRETE PAVEMENT OR BASE COURSE.

\*\* IF THE FINAL SURFACE OF THE PAVEMENT IS CONCRETE, THE GUTTER IS TO BE FLUSH WITH THE PAVEMENT.

NOTE: ① SIDEWALK, DRIVEWAY PAVEMENT OR MEDIAN SURFACE SHALL BE SIMILAR TO THE MATERIAL BEING REMOVED AND WILL BE PAID FOR SEPARATELY.

SODDING, SALT TOLERANT AND TOP SOIL, FURNISH AND PLACE 4" WILL BE PAID FOR SEPARATELY.

② FERTILIZER FOR THE PLACEMENT OF THE SOD IS NOT REQUIRED

③ CURB OR CURB AND GUTTER REPLACEMENT SHALL MATCH THE SHAPE OF THE EXISTING CURB OR CURB AND GUTTER UNLESS OTHERWISE SPECIFIED.

④ FOR CURB OR CURB AND GUTTER REMOVAL AND REPLACEMENT ADJACENT TO FLEXIBLE PAVEMENT DELETE EPOXY COATED TIE BARS.

⑤ LONGITUDINAL BARS, IF ENCOUNTERED IN THE EXISTING CURB OR CURB AND GUTTER, ARE NOT TO BE REPLACED. CUTTING AND REMOVING LONGITUDINAL BARS SHALL BE INCLUDED IN THE COST OF CURB OR CURB AND GUTTER REMOVAL AND REPLACEMENT.

⑥ THE COST OF HMA SURFACE REMOVAL IN THE EXISTING GUTTER FLAG SHALL BE INCLUDED IN THE COST OF THE CURB AND GUTTER REMOVAL AND REPLACEMENT.

⑦ THE REMOVAL AND REPLACEMENT OF THE EXISTING CURB OR CURB AND GUTTER SHALL BE DONE IN ACCORDANCE WITH THE APPLICABLE PORTIONS OF SECTION 440 AND 606 OF THE STANDARD SPECIFICATIONS.

⑧ THE LOCATIONS OF REMOVAL AND REPLACEMENT OF EXISTING CURB OR CURB AND GUTTER SHALL BE DETERMINED BY THE RESIDENT ENGINEER AT THE TIME OF CONSTRUCTION.

UNSUITABLE SUB-BASE MATERIAL TO BE REMOVED, IF DIRECTED BY THE ENGINEER, SHALL BE REPLACED WITH EITHER SUB-BASE GRANULAR MATERIAL, TYPE B OR ADDITIONAL THICKNESS OF CONCRETE.

REMOVAL AND REPLACEMENT 4" (100) OR LESS IS INCLUDED IN THE COST OF CURB OR CURB AND GUTTER REMOVAL AND REPLACEMENT.

REMOVAL AND REPLACEMENT IN EXCESS OF 4" (100) WILL BE PAID FOR IN ACCORDANCE WITH ARTICLE 109.04 OF THE STANDARD SPECIFICATIONS.

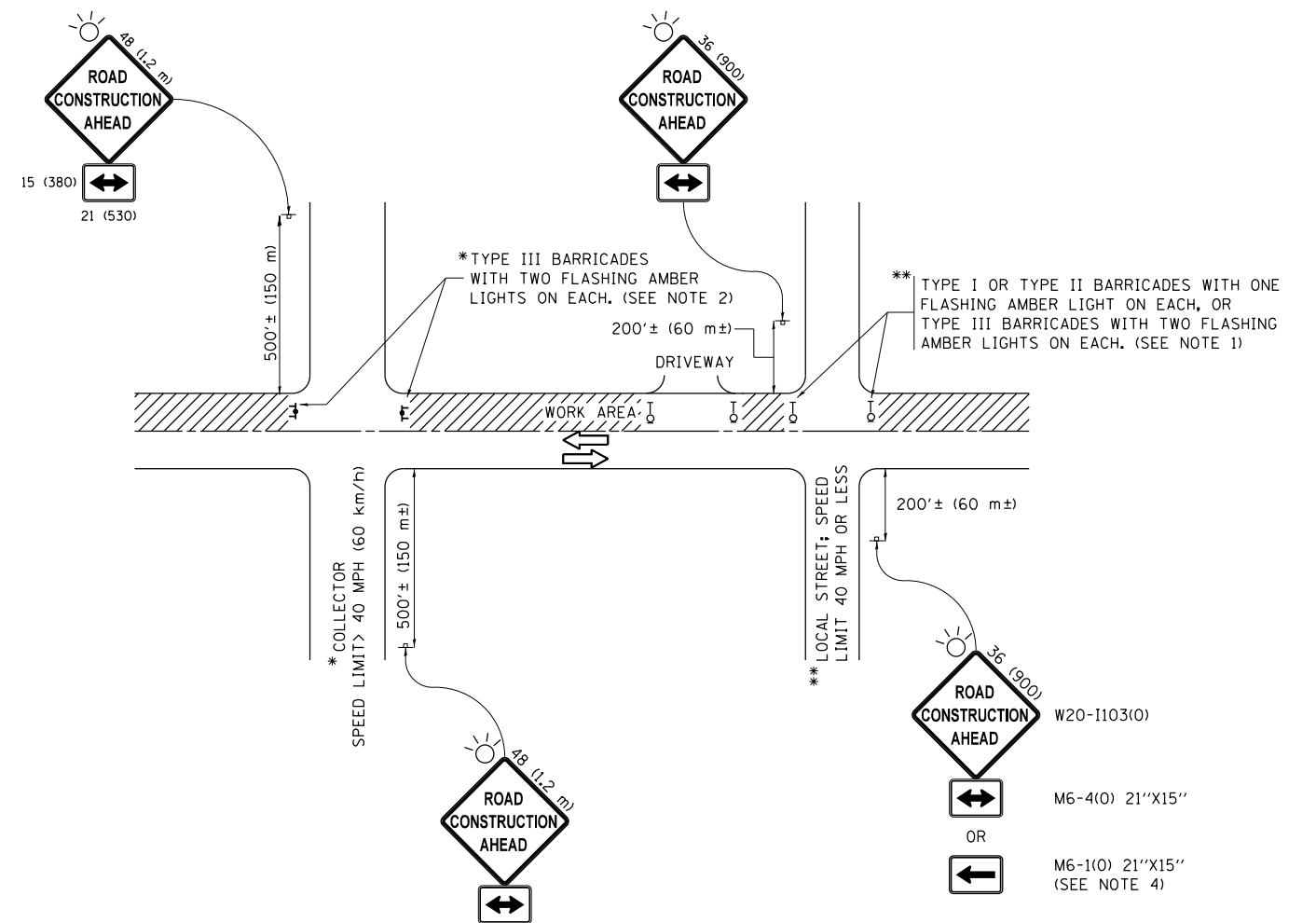
PROPOSED #6 (20) EPOXY COATED TIE BARS 24" (600) LONG AT 24" (600) CENTERS WILL NOT BE PAID FOR SEPARATELY. DELETE EPOXY COATED TIE BARS IF EXISTING TIE BARS ARE USUABLE AS DETERMINED BY THE ENGINEER. (SEE NOTE ③).

BASIS OF PAYMENT:  
THIS WORK WILL BE PAID FOR AT THE CONTRACT UNIT PRICE PER FOOT (METER) FOR "CURB REMOVAL AND REPLACEMENT" OR "COMBINATION CONCRETE CURB AND GUTTER REMOVAL AND REPLACEMENT".

# CURB OR CURB AND GUTTER REMOVAL AND REPLACEMENT

ALL DIMENSIONS ARE IN INCHES (MILLIMETERS) UNLESS OTHERWISE SHOWN.

FILE NAME =	USER NAME = STEEDPA	DESIGNED - A. HOUSEH	REVISED - R. SHAH 10-03-96	<b>STATE OF ILLINOIS DEPARTMENT OF TRANSPORTATION</b>	<b>CURB OR CURB AND GUTTER REMOVAL AND REPLACEMENT</b>	F.A.U. RE.	SECTION	COUNTY	TOTAL SHEETS	SHEET NO.
pw\11\084EBIDINTEG\illinois.gov\PIWIDOT\Documents\DOT Offices\District 1\Projects\PI4700\Drawings\Design\DistStd.dgn		REVISED - A. ABBAS 03-21-97	REVISED - M. GOMEZ 01-22-01			2807	1819SW-TR	COOK	22	17
PLOT SCALE = 100.0000' / 1".	CHECKED -	REVISED - R. BORO 12-15-09				<b>BD600-06 (BD-24)</b>		<b>CONTRACT NO. 62F07</b>		
PLOT DATE = 7/28/2017	DATE - 03-11-94					SCALE: NONE	SHEET NO. 1 OF 1 SHEETS	STA.	TO STA.	FED. ROAD DIST. NO. 1   ILLINOIS FED. AID PROJECT

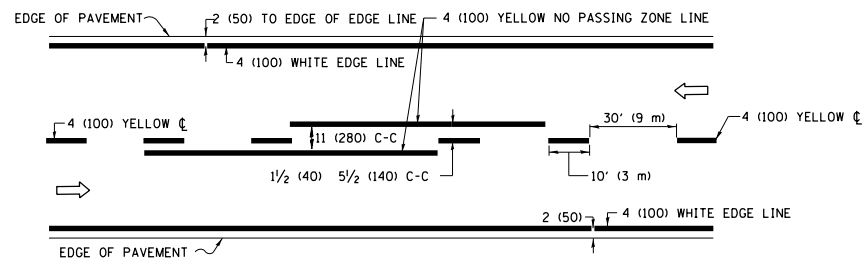


**NOTES:**

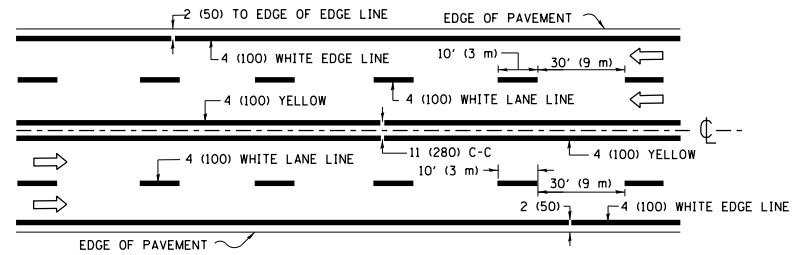
1. SIDE ROAD WITH A SPEED LIMIT OF 40 MPH (60 km/h) OR LESS AS SHOWN ON THE DRAWING AND AS DIRECTED BY THE ENGINEER:
  - a) ONE "ROAD CONSTRUCTION AHEAD" SIGN 36 x 36 (900x900) WITH A FLASHER MOUNTED ON IT APPROXIMATELY 200' (60 m) IN ADVANCE OF THE MAIN ROUTE.
  - b) THE CLOSED PORTION OF THE MAIN ROUTE SHALL BE PROTECTED BY BLOCKING WITH TYPE I, TYPE II OR TYPE III BARRICADES, 1/3 OF THE CROSS SECTION OF THE CLOSED PORTION.
2. SIDE ROAD WITH A SPEED LIMIT GREATER THAN 40 MPH (60 km/h) AS SHOWN ON THE DRAWING AND AS DIRECTED BY THE ENGINEER:
  - a) ONE "ROAD CONSTRUCTION AHEAD" SIGN 48 x 48 (1.2 m x 1.2 m) WITH A FLASHER MOUNTED ON IT APPROXIMATELY 500' (150 m) IN ADVANCE OF THE MAIN ROUTE.
  - b) THE CLOSED PORTION OF THE MAIN ROUTE SHALL BE PROTECTED BY BLOCKING WITH TYPE III BARRICADES, 1/2 OF THE CROSS SECTION OF THE CLOSED PORTION.
3. CONES MAY BE SUBSTITUTED FOR BARRICADES OR DRUMS AT HALF THE SPACING DURING DAY OPERATIONS. CONES SHALL BE A MINIMUM OF 28 (710) IN HEIGHT.
4. WHEN THE SIDE ROAD LIES BETWEEN THE BEGINNING OF THE MAINLINE SIGNING AND THE WORK ZONE, A SINGLE HEADED ARROW (M6-1) SHALL BE USED IN LIEU OF THE DOUBLE HEADED ARROW (M6-4).
5. WHEN WORK IS BEING PERFORMED ON A SIDE ROAD OR DRIVEWAY, FOLLOW THE APPLICABLE STANDARD(S). THE DIRECTIONAL ARROW (M6-1 OR M6-4) SHALL BE COVERED OR REMOVED WHEN NO LONGER CONSISTENT WITH THE TRAFFIC CONTROL SET-UP.
6. ADVANCE WARNING SIGNS ARE TO BE OMITTED ON DRIVEWAYS UNLESS OTHERWISE SPECIFIED IN THE PLANS OR BY THE ENGINEER.
7. THE TRAFFIC CONTROL AND PROTECTION FOR SIDE ROADS, INTERSECTIONS, AND DRIVEWAYS SHALL BE INCLUDED IN THE COST OF SPECIFIED TRAFFIC CONTROL STANDARDS OR ITEMS.

All dimensions are in inches (millimeters) unless otherwise shown.

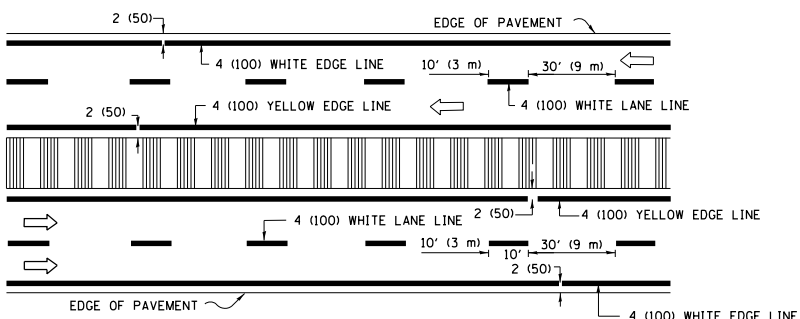
FILE NAME =	USER NAME = STEEDPA	DESIGNED - L.H.A.	REVISED - A. HOUSEH 10-15-96	<b>STATE OF ILLINOIS DEPARTMENT OF TRANSPORTATION</b>	<b>TRAFFIC CONTROL AND PROTECTION FOR SIDE ROADS, INTERSECTIONS, AND DRIVEWAYS</b>	F.A.U. RTE.	SECTION	COUNTY	TOTAL SHEETS	SHEET NO.
pw:\IL\084EBIDINTEG\illinois.gov\PIWIDOT\Documents\IDOT Offices\District 1\Projects\P14700\DRAWING\Design\DistStd.dgn			REVISED - T. RAMMACHER 01-06-00			2807	18195W-TR	COOK	22	18
Default	PLOT SCALE = 100.0000' / in.	CHECKED -	REVISED - A. SCHUETZE 07-01-13			<b>TC-10</b>		<b>CONTRACT NO. 62F07</b>		
	PLOT DATE = 7/28/2017	DATE - 06-89	REVISED - A. SCHUETZE 09-15-16			SCALE: NONE	SHEET 1 OF 1 SHEETS	STA. TO STA.	ILLINOIS FED. AID PROJECT	



**2-LANE ROADWAY**

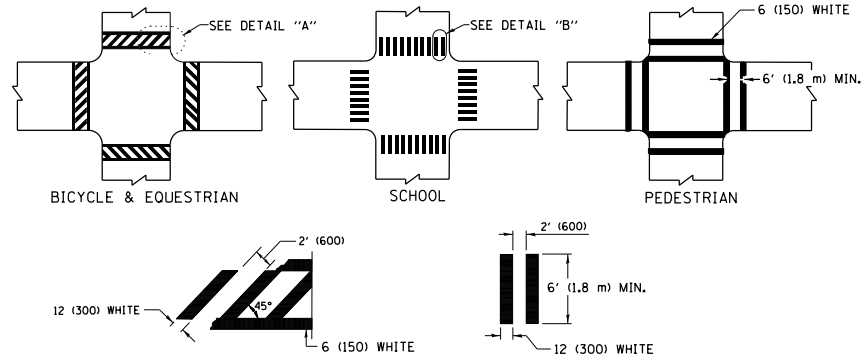


**MULTI-LANE UNDIVIDED**



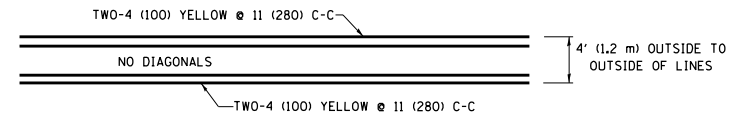
**MULTI-LANE DIVIDED WITH MEDIAN**

**TYPICAL LANE AND EDGE LINE MARKING**

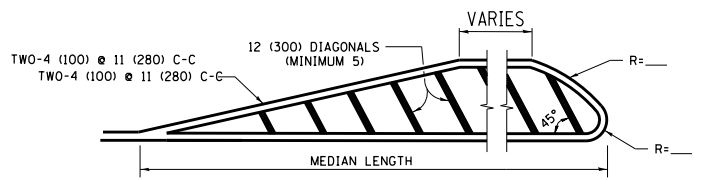


**TYPICAL CROSSWALK MARKING**

\* MARKINGS SHALL BE INSTALLED PARALLEL TO THE CENTERLINE OF THE ROAD WHICH IT CROSSES

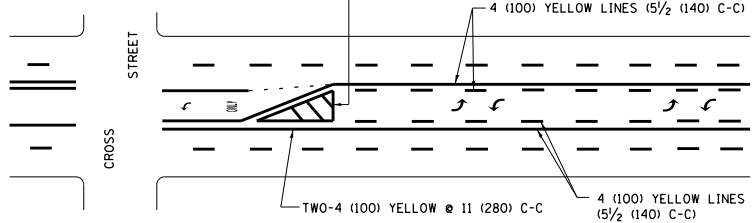


**4' (1.2 m) WIDE MEDIANS ONLY**



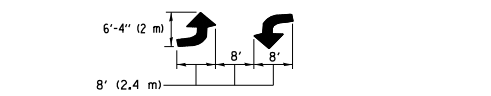
**MEDIANS OVER 4' (1.2 m) WIDE**

DIAGONAL LINE SPACING: 50' (15 m) C-C (LESS THAN 30MPH (50 km/h))  
75' (25 m) C-C 30MPH (50 km/h) TO 45MPH (70 km/h)  
150' (45 m) C-C (MORE THAN 45MPH (70 km/h))



**MEDIAN WITH TWO-WAY LEFT TURN LANE TYPICAL PAINTED MEDIAN MARKING**

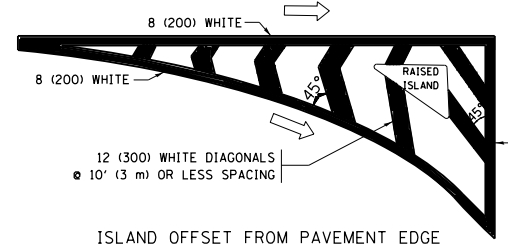
A MINIMUM OF TWO PAIRS OF TURN ARROWS SHALL BE USED, WHITE IN COLOR. ADDITIONAL PAIRS SHALL BE PLACED AT 200' (60 m) TO 300' (90 m) INTERVALS.



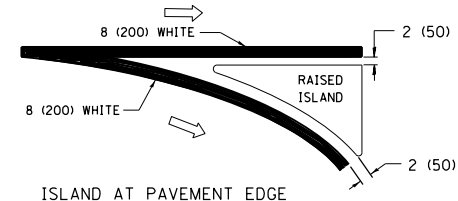
**TYPICAL LEFT (OR RIGHT) TURN LANE**

FULL SIZE LETTERS 8' (2.4 m) AND ARROWS SHALL BE USED.  
AREA = 15.6 SQ. FT. (1.5 m<sup>2</sup>) ONLY AREA = 20.8 SQ. FT. (1.9 m<sup>2</sup>)  
\* TURN LANES IN EXCESS OF 400' (120 m) IN LENGTH MAY HAVE AN ADDITIONAL SET OF ARROW - "ONLY" INSTALLED MIDWAY BETWEEN THE OTHER TWO SETS OF ARROW - "ONLY".

**TYPICAL TURN LANE MARKING**

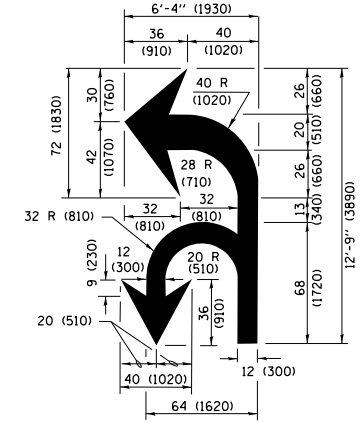


**ISLAND OFFSET FROM PAVEMENT EDGE**

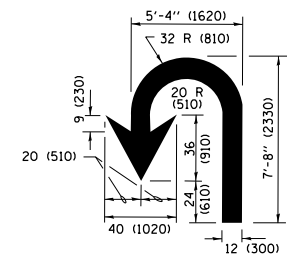


**ISLAND AT PAVEMENT EDGE**

**TYPICAL ISLAND MARKING**



**COMBINATION LEFT AND U-TURN**



**U-TURN**

**LANE REDUCTION TRANSITION**  
\* LANE REDUCTION ARROWS REQUIRED AT SPEEDS OF 45 MPH OR GREATER OR WHEN SPECIFIED IN PLANS.

D(FT)	SPEED LIMIT
345	30
425	35
500	40
580	45
665	50
750	55

TYPE OF MARKING	WIDTH OF LINE	PATTERN	COLOR	SPACING /REMARKS
CENTERLINE ON 2 LANE PAVEMENT	4 (100)	SKIP-DASH	YELLOW	10' (3 m) LINE WITH 30' (9 m) SPACE
CENTERLINE ON MULTI-LANE UNDIVIDED PAVEMENT	2 @ 4 (100)	SOLID	YELLOW	11 (280) C-C
NO PASSING ZONE LINES FOR ONE DIRECTION FOR BOTH DIRECTIONS	4 (100) 2 @ 4 (100)	SOLID SOLID	YELLOW YELLOW	5/2 (140) C-C FROM SKIP-DASH CENTERLINE 11 (280) C-C OMIT SKIP-DASH CENTERLINE BETWEEN
LANE LINES	4 (100) 5 (125) ON FREEWAYS	SKIP-DASH SKIP-DASH	WHITE WHITE	10' (3 m) LINE WITH 30' (9 m) SPACE
DOTTED LINES (EXTENSIONS OF CENTER, LANE OR TURN LANE MARKINGS)	SAME AS LINE BEING EXTENDED	SKIP-DASH	SAME AS LINE BEING EXTENDED	2' (600) LINE WITH 6' (1.8 m) SPACE
EDGE LINES	4 (100)	SOLID	YELLOW-LEFT WHITE-RIGHT	OUTLINE MEDIANS IN YELLOW
TURN LANE MARKINGS	6 (150) LINE; FULL SIZE LETTERS & SYMBOLS (8' (2.4m))	SOLID	WHITE	SEE TYPICAL TURN LANE MARKING DETAIL
TWO WAY LEFT TURN MARKING	2 @ 4 (100) EACH DIRECTION 8' (2.4m) LEFT ARROW	SKIP-DASH AND SOLID IN PAIRS	YELLOW WHITE	10' (3 m) LINE WITH 30' (9 m) SPACE FOR SKIP-DASH; 5/2 (140) C-C BETWEEN SOLID LINE AND SKIP-DASH LINE SEE TYPICAL TWO-WAY LEFT TURN MARKING DETAIL
CROSSWALK LINES (PEDESTRIAN) A. DIAGONALS (BIKE & EQUESTRIAN) B. LONGITUDINAL BARS (SCHOOL)	2 @ 6 (150) 12 (300) @ 45° 12 (300) @ 90°	SOLID SOLID SOLID	WHITE WHITE WHITE	NOT LESS THAN 6' (1.8 m) APART 2' (600) APART SEE TYPICAL CROSSWALK MARKING DETAILS.
STOP LINES	24 (600)	SOLID	WHITE	PLACE 4' (1.2 m) IN ADVANCE OF AND PARALLEL TO CROSSWALK, IF PRESENT, OTHERWISE, PLACE AT DESIRED STOPPING POINT, PARALLEL TO CROSSROAD CENTERLINE, WHERE POSSIBLE.
PAINTED MEDIANS	2 @ 4 (100) WITH 12 (300) DIAGONALS @ 45° NO DIAGONALS USED FOR 4' (1.2 m) WIDE MEDIANS	SOLID	YELLOW; TWO WAY TRAFFIC WHITE; ONE WAY TRAFFIC	11 (280) C-C FOR THE DOUBLE LINE SEE TYPICAL PAINTED MEDIAN MARKING.
GORE MARKING AND CHANNELIZING LINES	8 (200) WITH 12 (300) DIAGONALS @ 45°	SOLID	WHITE	DIAGONALS: 15' (4.5 m) C-C (LESS THAN 30MPH (50 km/h)) 20' (6 m) C-C 30MPH (50 km/h) TO 45MPH (70 km/h) 30' (9 m) C-C (OVER 45MPH (70 km/h))
RAILROAD CROSSING	24 (600) TRANSVERSE LINES; "RR" IS 6' (1.8 m) LETTERS; 16 (400) LINE FOR "X"	SOLID	WHITE	SEE STATE STANDARD 780001 AREA OF: "R"=3.6 SQ. FT. (0.33 m <sup>2</sup> ) EACH "X"=54.0 SQ. FT. (5.0 m <sup>2</sup> )
SHOULDER DIAGONALS (REQUIRED FOR SHOULDERS ≥ 8')	12 (300) @ 45°	SOLID	WHITE - RIGHT YELLOW - LEFT	50' (15 m) C-C (LESS THAN 30MPH (50 km/h)) 75' (25 m) C-C (30 MPH (50 km/h) TO 45MPH (70 km/h)) 150' (45 m) C-C (OVER 45MPH (70 km/h))
U TURN ARROW	SEE DETAIL	SOLID	WHITE	16.3 SF
2 ARROW COMBINATION LEFT AND U TURN	SEE DETAIL	SOLID	WHITE	30.4 SF

FOR FURTHER DETAILS ON PAVEMENT MARKING REFER TO STANDARD SPECIFICATIONS FOR ROAD AND BRIDGE CONSTRUCTION AND STATE STANDARD 780001.

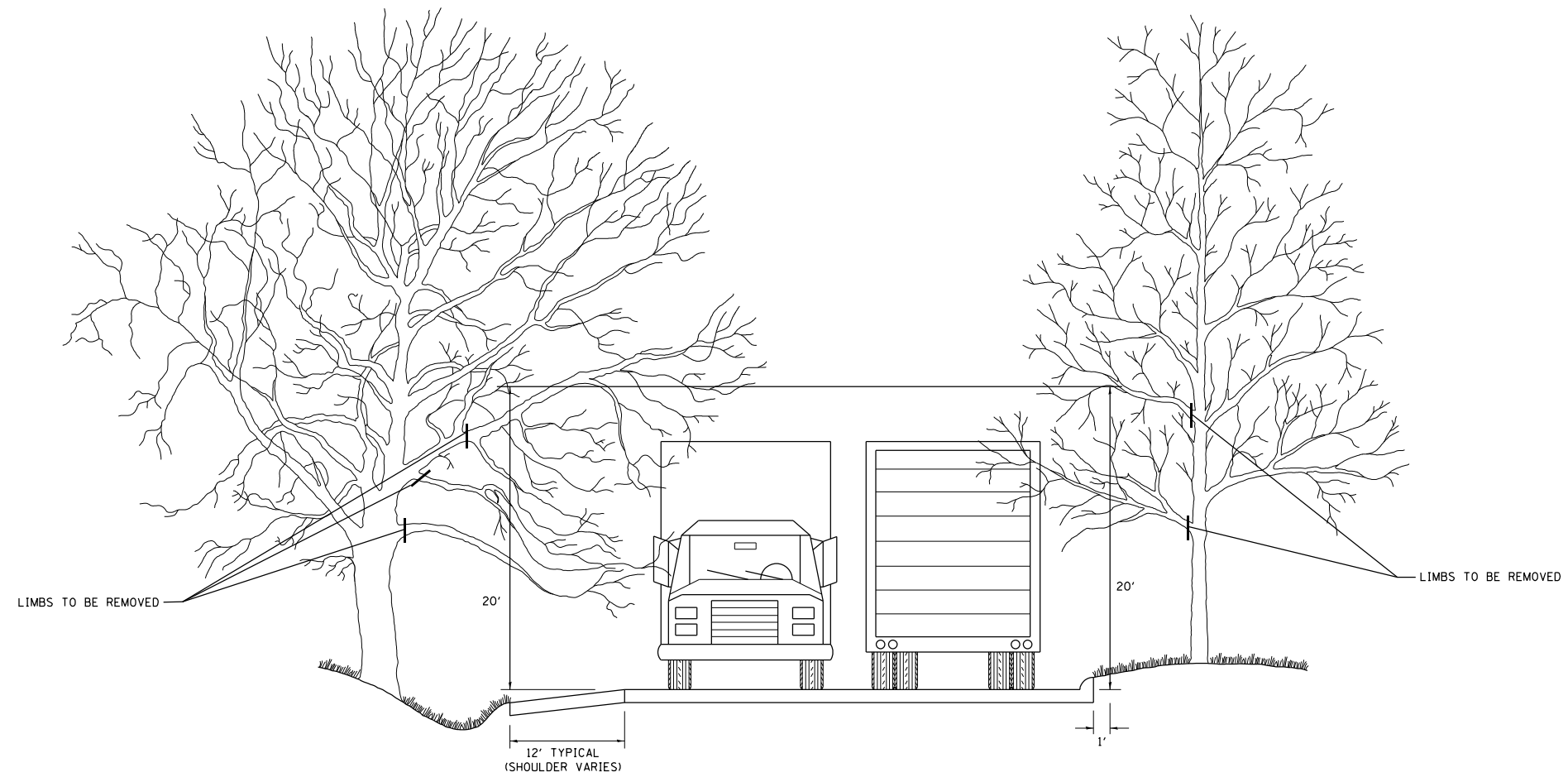
All dimensions are in inches (millimeters) unless otherwise shown.

FILE NAME =	USER NAME = STEEDPA	DESIGNED - EVERS	REVISED - C. JUCIUS 09-09-09
pw\1\084EBIDINTEG\illinois.gov\PIWIDOT\Documents\DOT Offices\District 1\Projects\P1470\Drawings\Design\DistStd.dgn			REVISED - C. JUCIUS 07-01-13
Default	PLOT SCALE = 100.0000' / in.	CHECKED -	REVISED - C. JUCIUS 12-21-15
	PLOT DATE = 7/28/2017	DATE - 03-19-90	REVISED - C. JUCIUS 04-12-16

**STATE OF ILLINOIS  
DEPARTMENT OF TRANSPORTATION**

<b>DISTRICT ONE</b>			
<b>TYPICAL PAVEMENT MARKINGS</b>			
SCALE: NONE	SHEET 1	OF 1 SHEETS	STA. TO STA.

F.A.U R.T.E.	SECTION	COUNTY	TOTAL SHEETS	SHEET NO.
2807	1819SW-TR	COOK	22	19
<b>TC-13</b>		<b>CONTRACT NO.</b>	<b>62F07</b>	
ILLINOIS FED. AID PROJECT				



FILE NAME =	USER NAME = STEEDPA	DESIGNED -	REVISED - R. BORO 10-31-06
p:\11\084EBIDINTEG.illinois.gov\PIWIDOT\Documents\IDOT Offices\District 1\Projects\P14700\Drawings\Design\DistStd.dgn		CHECKED -	REVISED -
	PLOT SCALE = 100.0000' / 1in.	DATE -	REVISED -
	PLOT DATE = 7/28/2017		

**STATE OF ILLINOIS  
DEPARTMENT OF TRANSPORTATION**

**PRUNING FOR SAFETY AND  
EQUIPMENT CLEARANCE**

SCALE: NONE    SHEET NO. 1 OF 1 SHEETS    STA.    TO STA.

F.A.U. RTE.	SECTION	COUNTY	TOTAL SHEETS	SHEET NO.
2807	1819SW-TR	COOK	22	20
<b>BM-20</b>			<b>CONTRACT NO. 62F07</b>	
FED. ROAD DIST. NO. 1   ILLINOIS FED. AID PROJECT				

SIGNAL HEAD, 1-FACE, 1-SECTION  
THE BOTTOM OF THE HOUSING SHALL  
BE NOT LESS THAN 12" (305mm) NOR  
MORE THAN 24" (610mm) ABOVE THE  
TOP OF THE SIGN.

4" (102 mm) X 6" (152 mm)  
WOOD POST AND SIGN

FLASHER  
CONTROLLER  
AND CABINET

FLASHER  
CONTROLLER  
AND CABINET

CONDUIT CLAMP

7' (2.134m) MIN. URBAN  
5' (1.524m) MIN. RURAL

EDGE OF PAVEMENT

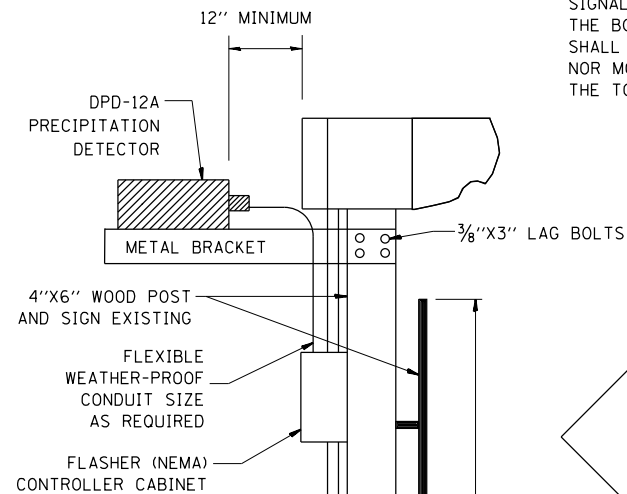
1/2" (38mm) G.S. CONDUIT. FIVE  
EVENLY SPACED CONDUIT  
CLAMPS SHALL BE USED TO  
ATTACH CONDUIT TO POST

1/2" (38mm) DRILLED HOLE CENTERED  
AT 18" (457mm) FROM GROUND LEVEL

1/2" (38mm) DRILLED HOLE CENTERED  
AT 4" (102mm) FROM GROUND LEVEL

30" (76mm) MIN.

**POST MOUNTED FLASHING BEACON  
WITH CONTROLLER AND CABINET**



SIGNAL HEAD, 1-FACE, 1-SECTION  
THE BOTTOM OF THE HOUSING  
SHALL BE NOT LESS THAN 12"  
NOR MORE THAN 24" ABOVE  
THE TOP OF THE SIGN.

12" MINIMUM  
24" MAXIMUM

W8-5 SIGN

7' MIN. URBAN  
5' MIN RURAL

EDGE OF  
PAVEMENT

1-1/2" G.S. CONDUIT.  
4 EVENLY SPACED CONDUIT  
CLAMPS SHALL BE USED TO  
ATTACH CONDUIT TO POST

2/C CABLE AND 1/2" G.S.  
CONDUIT IN TRENCH TO  
CONTROLLER AND SERVICE  
INSTALLATION

30' MIN.

SIDE VIEW

FRONT VIEW

**POST MOUNTED FLASHING BEACON  
WITH PRECIPITATION DETECTOR**

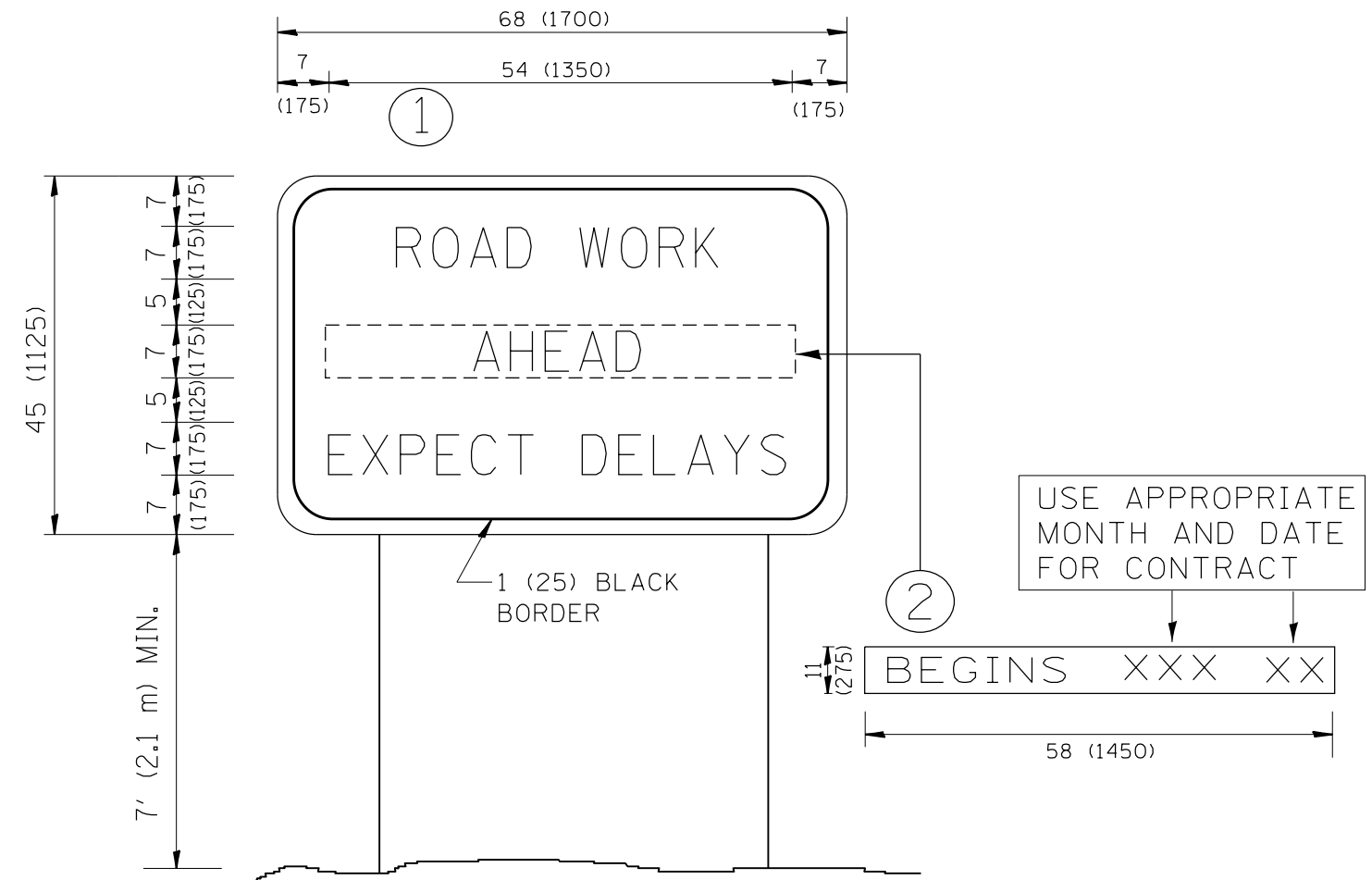
FILE NAME =	USER NAME = STEEDPA	DESIGNED - TRF	REVISED - 01-01-2007
pw:\IL\084EBIDINTEG\illinois.gov\PWIDOT\Documents\IDOT Offices\District 1\Projects\14700\Drawings\Design\1819SW-TR\Std.dgn		CHECKED -	REVISED - 07-01-2015
Default	PLOT SCALE = 100.0000' / 1in.	DATE -	REVISED -
	PLOT DATE = 7/28/2017		

**STATE OF ILLINOIS  
DEPARTMENT OF TRANSPORTATION**

**DISTRICT ONE  
FLASHING BEACON INSTALLATION DETAILS**

SCALE: NTS SHEET 1 OF 2 SHEETS STA. TO STA.

F.A.U RTE.	SECTION	COUNTY	TOTAL SHEETS	SHEET NO.
2807	1819SW-TR	COOK	22	21
<b>TS-04</b>		<b>CONTRACT NO. 62F07</b>		
ILLINOIS FED. AID PROJECT				



**NOTES:**

1. USE BLACK LETTERING ON ORANGE BACKGROUND.
2. ERECT SIGNS IN ADVANCE OF THE LOCATION FOR THE "ROAD CONSTRUCTION AHEAD" SIGN AT LOCATIONS AS DIRECTED BY THE ENGINEER.
3. ERECT SIGN ① WITH INSTALLED PANEL ② ONE WEEK PRIOR TO THE START OF CONSTRUCTION.
4. REMOVE PANEL ② SOON AFTER THE START OF CONSTRUCTION.
5. SEE SPECIAL PROVISION FOR "TEMPORARY INFORMATION SIGNING" FOR ADDITIONAL INFORMATION.
6. ONE SIGN ASSEMBLY EQUALS 25.70 SQ. FT. (2.3 SQ. M.)
7. SHALL BE PAID FOR AS TEMPORARY INFORMATION SIGNING.

ALL DIMENSIONS ARE IN INCHES (MILLIMETERS) UNLESS OTHERWISE SHOWN.

FILE NAME =	USER NAME = STEEDPA	DESIGNED -	REVISED - R. MIRS 09-15-97	<b>STATE OF ILLINOIS DEPARTMENT OF TRANSPORTATION</b>	<b>ARTERIAL ROAD INFORMATION SIGN</b>	F.A.U. RTE.	SECTION	COUNTY	TOTAL SHEETS	SHEET NO.
p:\11\084EBIDINTEG\illinois.gov\PIDOT\Documents\DOT Offices\District 1\Projects\P14700\DRAWING\Design\DistStd.dgn			REVISED - R. MIRS 12-11-97			2807	1819SW-TR	COOK	22	22
PLOT SCALE = 100.0000' / 1in.	CHECKED -	REVISED - T. RAMMACHER 02-02-99				<b>TC-22</b>		<b>CONTRACT NO. 62F07</b>		
PLOT DATE = 7/28/2017	DATE -	REVISED - C. JUCIUS 01-31-07	SCALE: NONE			SHEET NO. 1 OF 1 SHEETS	STA.	TO STA.		FED. ROAD DIST. NO. 1   ILLINOIS FED. AID PROJECT