

F.A.P. RTE.	SECTION	COUNTY	TOTAL SHEETS	SHEET NO.
310	(124) BRR	MORGAN	16	1
		ILLINOIS	CONTRACT NO. 72K13	

STATE OF ILLINOIS
DEPARTMENT OF TRANSPORTATION
DIVISION OF HIGHWAYS

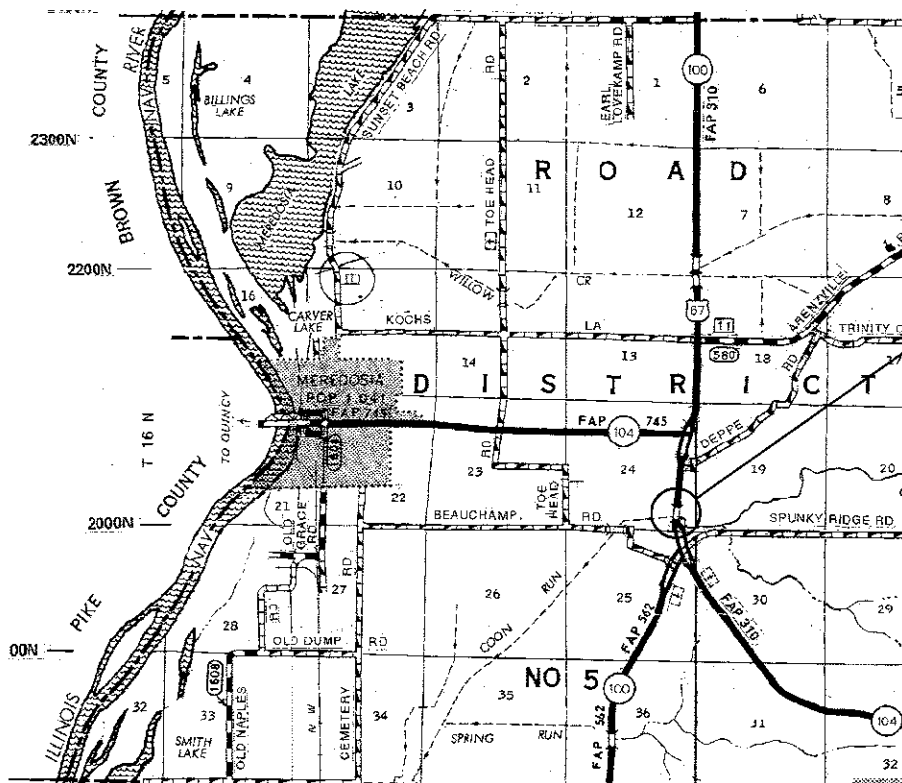
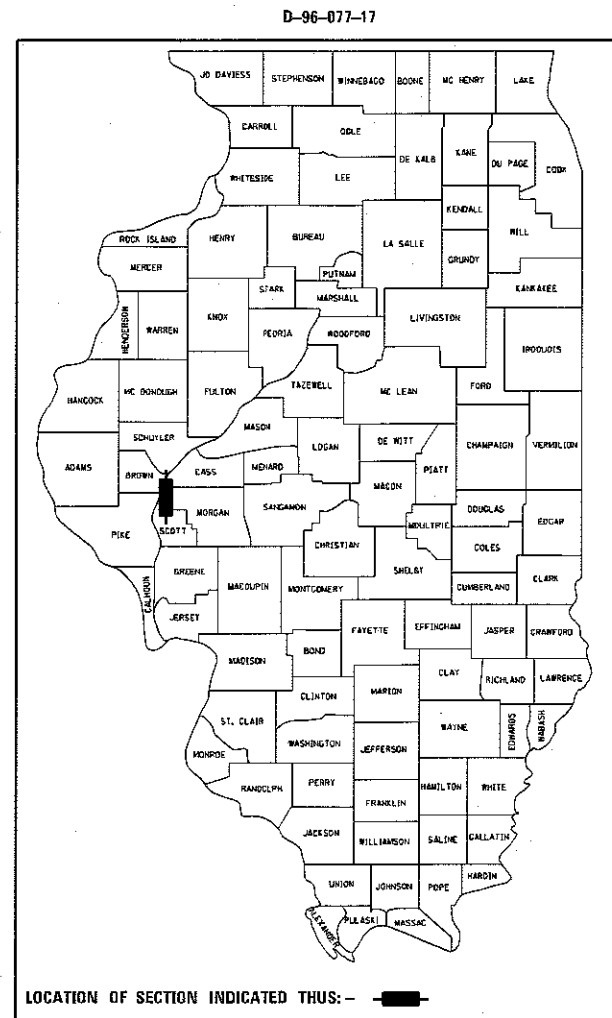
**PROPOSED
CONTRACT MAINTENANCE**

F.A.P. ROUTE 310 (US 67 / IL 100 / IL 104)
SECTION (124) BRR

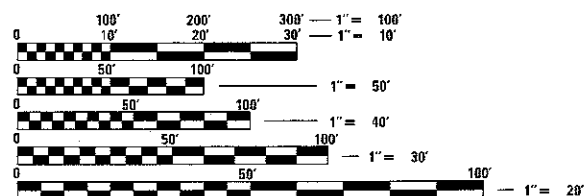
BRIDGE DECK OVERLAY
MORGAN COUNTY

C-96-077-17

FOR INDEX OF SHEETS, SEE SHEET NO. 2



PROJECT LOCATION
SN 069-0017
US 67 OVER COON RUN
0.3 MI N OF IL 100



FULL SIZE PLANS HAVE BEEN PREPARED USING STANDARD ENGINEERING SCALES. REDUCED SIZED PLANS WILL NOT CONFORM TO STANDARD SCALES. IN MAKING MEASUREMENTS ON REDUCED PLANS, THE ABOVE SCALES MAY BE USED.

J.U.L.I.E.
JOINT UTILITY LOCATION INFORMATION FOR EXCAVATION
1-800-892-0123
OR 811

BRIDGE MAINTENANCE ENGINEER: BRANDON DUDLEY (217) 785-9290

GROSS LENGTH = 540 FT. = 0.10 MILE
NET LENGTH = 540 FT. = 0.10 MILE

STATE OF ILLINOIS
DEPARTMENT OF TRANSPORTATION
DIVISION OF HIGHWAYS

SUBMITTED *29 August 2017*

[Signature]
REGION FOUR ENGINEER

Oct 13 2017
Hauman M. Addis, PE
ENGINEER OF DESIGN AND ENVIRONMENT

Oct 13 2017
[Signature]
DIRECTOR OF HIGHWAYS, CHIEF ENGINEER

PRINTED BY THE AUTHORITY
OF THE STATE OF ILLINOIS

CONTRACT NO. 72K13

0-01624-6008
100% STATE

CODE NO.	ITEM	UNIT	TOTAL QUANTITY	BRIDGE	
				0047	RURAL
70300100	SHORT TERM PAVEMENT MARKING	FOOT	100	100	
70300150	SHORT TERM PAVEMENT MARKING REMOVAL	SO FT	33	33	
70400100	TEMPORARY CONCRETE BARRIER	FOOT	440	440	
70400200	RELOCATE TEMPORARY CONCRETE BARRIER	FOOT	410	410	
70600260	IMPACT ATTENUATORS, TEMPORARY (FULLY REDIRECTIVE, NARROW), TEST LEVEL 3	EACH	2	2	
70600332	IMPACT ATTENUATORS, RELOCATE (FULLY REDIRECTIVE, NARROW), TEST LEVEL 3	EACH	2	2	
* 72501000	TERMINAL MARKER - DIRECT APPLIED	EACH	4	4	
* 78001120	PAINT PAVEMENT MARKING - LINE 5"	FOOT	2000	2000	
* 78200006	GUARDRAIL REFLECTORS , TYPE B	EACH	6	6	
78300200	RAISED REFLECTIVE PAVEMENT MARKER REMOVAL	EACH	4	4	
X0322469	PLUG EXISTING FLOOR DRAIN	EACH	12	12	
X0323818	CLEANING AND PAINTING EXPOSED REBAR	SO FT	110	110	
X0327979	PAVEMENT MARKING REMOVAL - GRINDING	SO FT	442	442	
X7010202	TRAFFIC CONTROL AND PROTECTION, STANDARD 701321 (SPECIAL)	EACH	1	1	

* SPECIALTY ITEM

0-01624-6008
100% STATE

CODE NO.	ITEM	UNIT	TOTAL QUANTITY	BRIDGE	
				0047	RURAL
X7015005	CHANGEABLE MESSAGE SIGN	CAL DA	120	120	
Z0012132	BRIDGE DECK SCARIFICATION, 1"	SO YD	594	594	
Z0012164	BRIDGE DECK MICROSILICA CONCRETE OVERLAY, 2-1/2"	SO YD	594	594	
Z0012754	STRUCTURAL REPAIR OF CONCRETE (DEPTH EQUAL TO OR LESS THAN 5")	SO FT	96	96	
Z0016002	DECK SLAB REPAIR (FULL DEPTH, TYPE II)	SO YD	5	5	

S

MODEL: D:\work\p\DOT\Documents\DOT - Office\District 6\Projects\B027413\CAD\DATA\CAD\Sheet10.kxd; 8/23/2017 10:58:41 AM

USER NAME = audreybm	DESIGNED -	REVISED -
PLOT SCALE = 100.0000' / in.	DRAWN -	REVISED -
PLOT DATE = 8/23/2017	CHECKED -	REVISED -
	DATE -	REVISED -

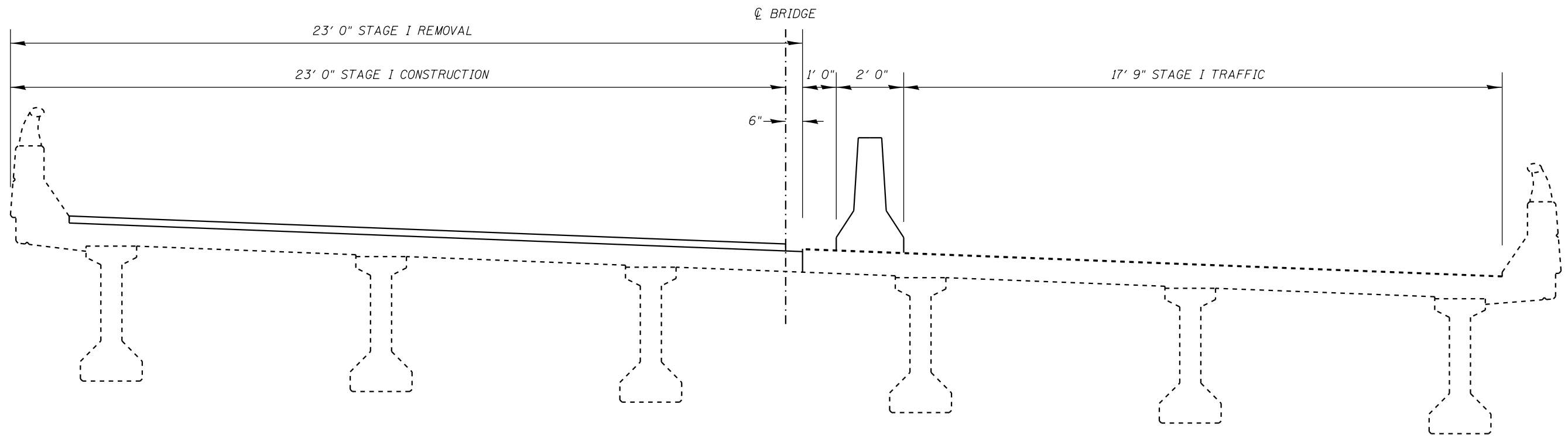
STATE OF ILLINOIS
DEPARTMENT OF TRANSPORTATION

SUMMARY OF QUANTITIES

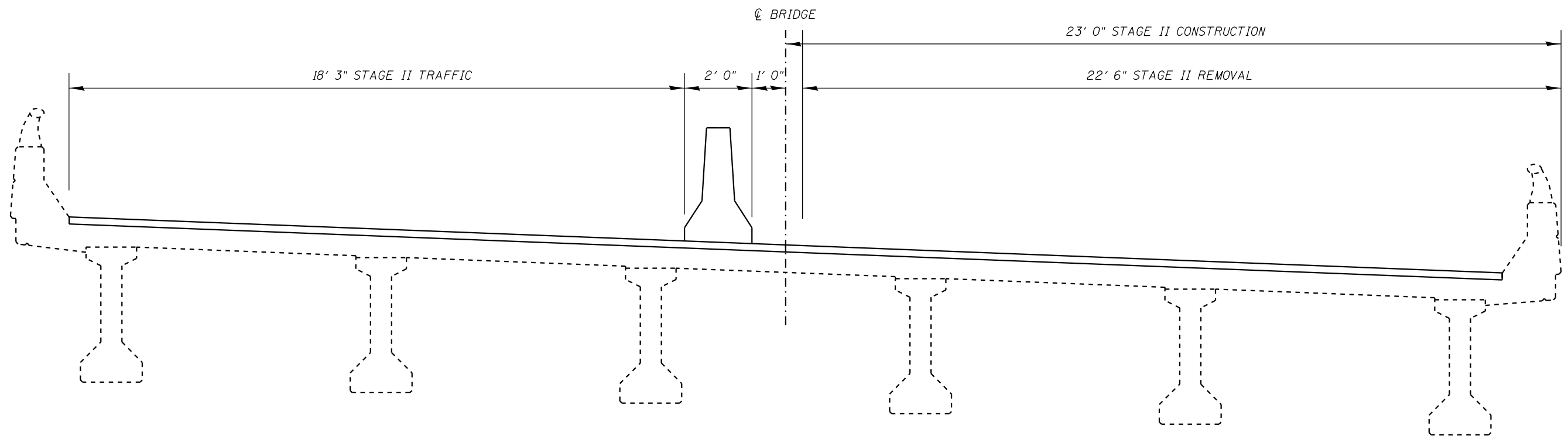
SCALE: SHEET OF SHEETS STA. TO STA.

F.A.P. RTE. 310	SECTION (124) BRR	COUNTY MORGAN	TOTAL SHEETS 18	SHEET NO. 4
CONTRACT NO. 72K13			ILLINOIS FED. AID PROJECT	

REV



STAGE I CROSS SECTION (LOOKING NORTH)



STAGE I CROSS SECTION (LOOKING NORTH)

MODEL: Default
 FILE: \\nas01c.psu.edu\B&E\BID\NTEC\Illinois.gov\PW\DOT\Documents\DOT_Offices\Director\Projects\0672\K13\CADD\DATA\CAD\Sheet\0672K13.dgn

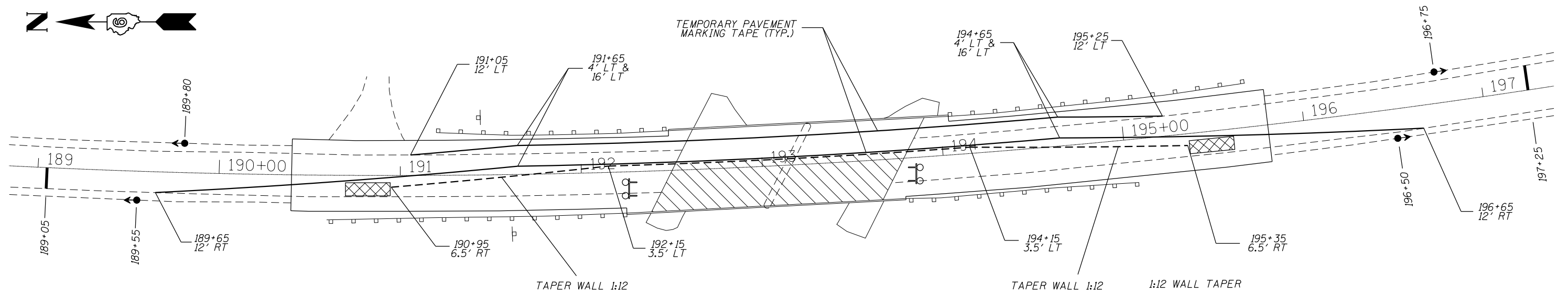
USER NAME = dudleybm	DESIGNED -	REVISED -
PLOT SCALE = 100.0000' / in.	DRAWN -	REVISED -
PLOT DATE = 8/23/2017	CHECKED -	REVISED -
	DATE -	REVISED -

STATE OF ILLINOIS
DEPARTMENT OF TRANSPORTATION

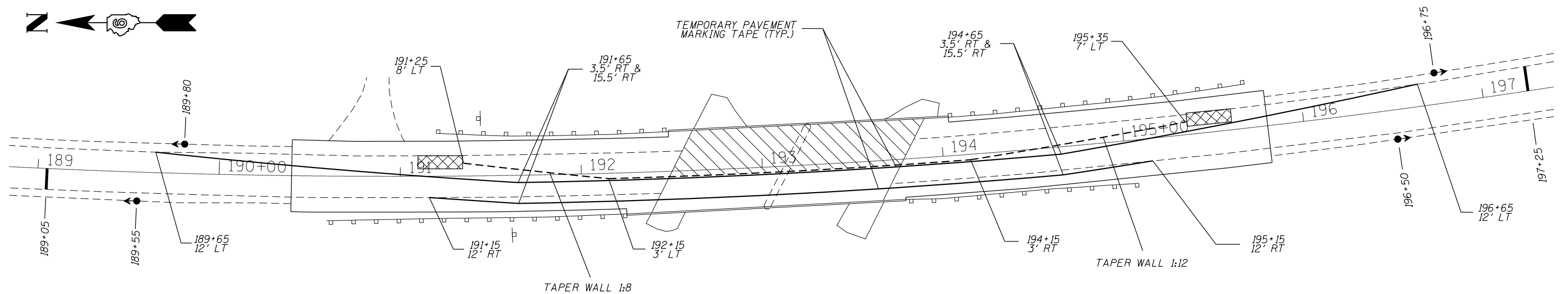
STAGING DETAIL

SCALE: SHEET OF SHEETS STA. TO STA.

F.A.P. RTE.	SECTION	COUNTY	TOTAL SHEETS	SHEET NO.
310	(124) BRR	MORGAN	18	7
CONTRACT NO. 72K13				
ILLINOIS FED. AID PROJECT				








STAGE I TRAFFIC CONTROL PLAN



STAGE II TRAFFIC CONTROL PLAN

SYMBOLS

-  WORK AREA
-  TEMPORARY CONCRETE BARRIER
-  IMPACT ATTENUATOR
-  TRAFFIC SIGNAL
-  TYPE III BARRICADE WITH FLASHING LIGHTS

TRAFFIC CONTROL NOTES:

1. TRAFFIC CONTROL DEVICES NOT SHOWN IN THIS DETAIL SHALL BE PER STANDARD 701321. DEVICES AND TEMPORARY PAVEMENT MARKINGS SHOWN IN THIS DETAIL SHALL BE INCLUDED IN THE COST OF TRAFFIC CONTROL AND PROTECTION, STANDARD 701321 (SPECIAL). IMPACT ATTENUATORS, TEMPORARY RUMBLE STRIPS, AND TEMPORARY CONCRETE BARRIER SHALL BE PAID SEPARATELY.
2. TEMPORARY CONCRETE BARRIER OFFSETS GIVEN IN THIS DETAIL REFER TO THE EDGE OF THE BARRIER NEAREST TO LIVE TRAFFIC.
3. SIGNS SHALL BE PROVIDED PER THE SIGNING DETAIL PROVIDED ON THE FOLLOWING PAGE AND PER STANDARD 701321. THE COST OF ALL REQUIRED SIGNS SHALL BE INCLUDED IN THE BID PRICE FOR TRAFFIC CONTROL AND PROTECTION, STANDARD 701321 (SPECIAL).

MODEL: Default
 FILE: \\mspc-pw\ulb\BARRIERS\Illinois\gov\PIWDOT\Documents\DOT Office\DI\erict @Project\0672\13\CADDData\CAD\Sheet\DXXXXXX.rvt\plan.dgn

USER NAME = dudleybm	DESIGNED -	REVISED -
	DRAWN -	REVISED -
PLOT SCALE = 100,0000' / in.	CHECKED -	REVISED -
PLOT DATE = 8/23/2017	DATE -	REVISED -

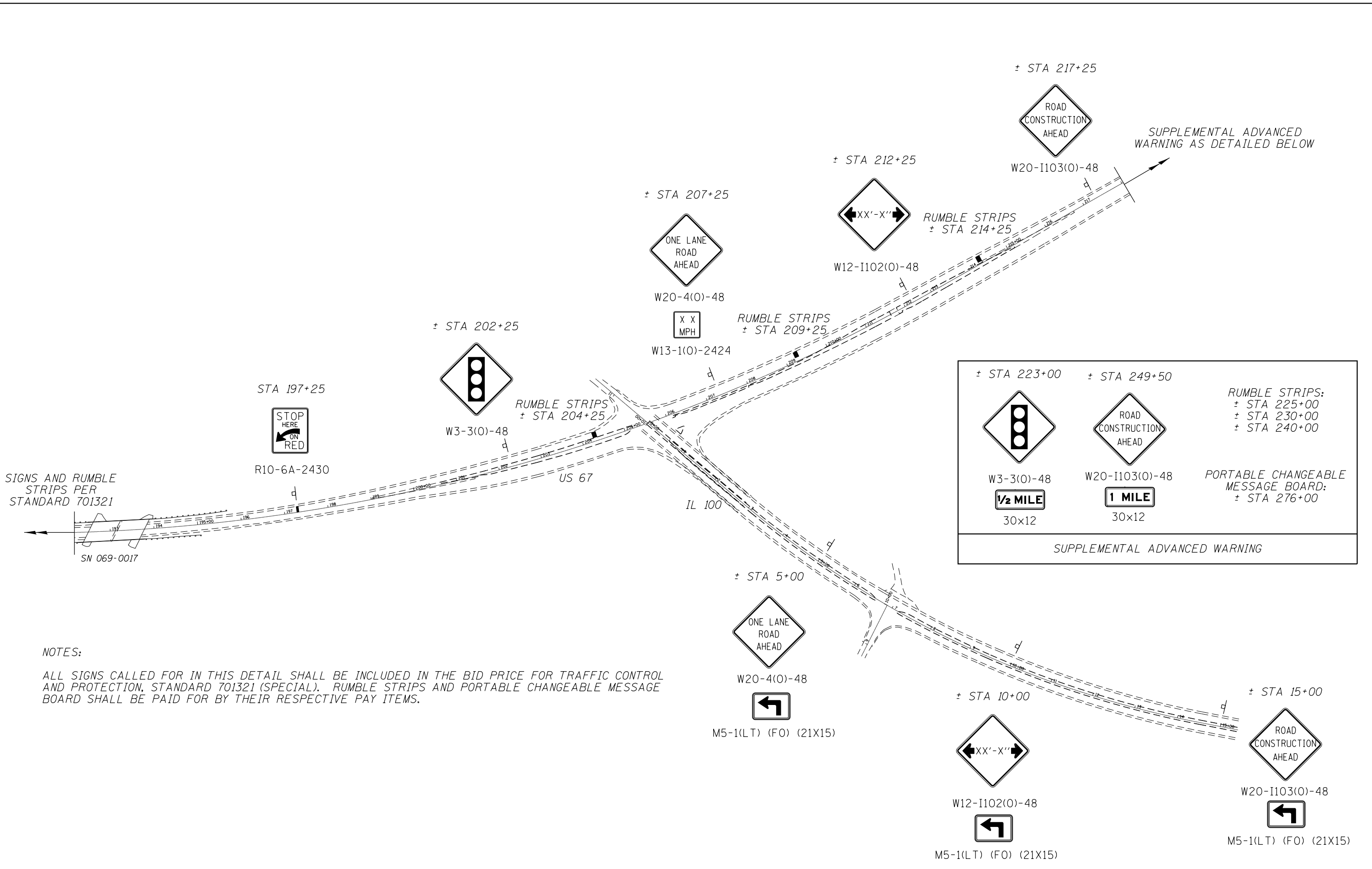
STATE OF ILLINOIS
DEPARTMENT OF TRANSPORTATION

TRAFFIC STAGING PLAN

SCALE: SHEET OF SHEETS STA. TO STA.

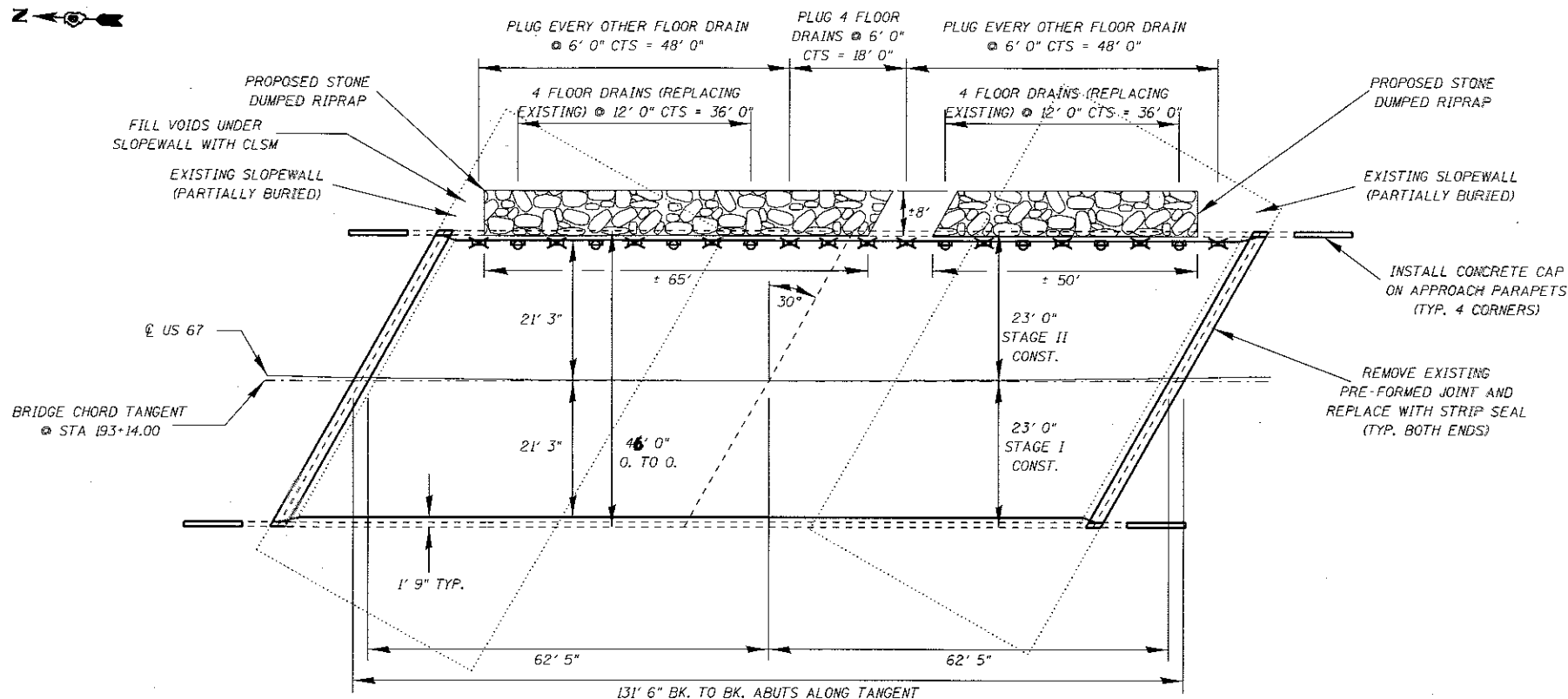
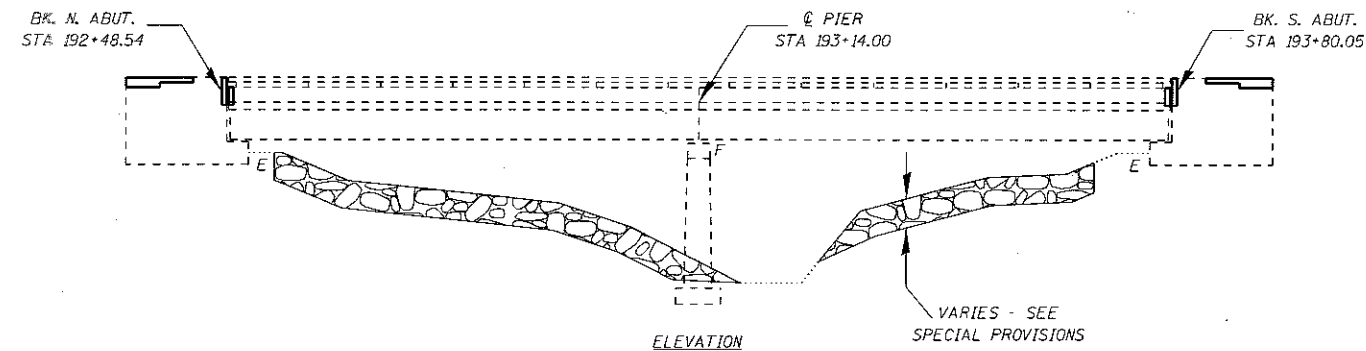
F.A.P. RTE.	SECTION	COUNTY	TOTAL SHEETS	SHEET NO.
310	(124) BRR	MORGAN	18	8
CONTRACT NO. 72K13			ILLINOIS FED. AID PROJECT	

MODEL: Default
 FILE: \\mhc-pw\ulb\B&E\DOT\Illinois\gov\PIW\DOT\Documents\DOT - Offices\Director @ Projects\0672\X13\CADD\data\CAD\sheet\DOT\XXXXXX\sheet\plan.dgn



NOTES:
 ALL SIGNS CALLED FOR IN THIS DETAIL SHALL BE INCLUDED IN THE BID PRICE FOR TRAFFIC CONTROL AND PROTECTION, STANDARD 701321 (SPECIAL). RUMBLE STRIPS AND PORTABLE CHANGEABLE MESSAGE BOARD SHALL BE PAID FOR BY THEIR RESPECTIVE PAY ITEMS.

USER NAME = dudleybm DESIGNED - DRAWN - PLOT SCALE = 100,0000' / in. CHECKED - PLOT DATE = 8/23/2017 DATE -				REVISED - REVISED - REVISED - REVISED -				STATE OF ILLINOIS DEPARTMENT OF TRANSPORTATION				SUPPLEMENTAL SIGNING DETAIL				F.A.P. RTE. 310 SECTION (124) BRR COUNTY MORGAN TOTAL SHEETS 18 SHEET NO. 9 CONTRACT NO. 72K13	
SCALE:		SHEET OF SHEETS		STA. TO STA.		ILLINOIS		FED. AID PROJECT									



David Carl Puzey 9/25/17
Expires 11/30/18

GENERAL NOTES:

ALL STRUCTURAL STEEL SHALL BE AASHTO M-270 GRADE 36, UNLESS OTHERWISE NOTED.

REINFORCEMENT BARS DESIGNATED (E) SHALL BE EPOXY COATED.

PRIOR TO POURING THE NEW CONCRETE DECK, ALL HEAVY OR LOOSE MILL SCALE AND OTHER LOOSE OR POTENTIALLY DETRIMENTAL FOREIGN MATERIAL SHALL BE REMOVED FROM THE SURFACES IN CONTACT WITH CONCRETE. TIGHTLY ADHERED PAINT MAY REMAIN UNLESS OTHERWISE NOTED. REMOVAL SHALL BE ACCOMPLISHED BY METHODS THAT WILL NOT DAMAGE THE STEEL AND THE COST WILL BE INCLUDED IN CONCRETE REMOVAL.

PLAN DIMENSIONS AND DETAILS RELATIVE TO EXISTING PLANS ARE SUBJECT TO NOMINAL CONSTRUCTION VARIATIONS. THE CONTRACTOR SHALL FIELD VERIFY EXISTING DIMENSIONS AND DETAILS AFFECTING NEW CONSTRUCTION AND MAKE NECESSARY APPROVED ADJUSTMENTS PRIOR TO CONSTRUCTION OR ORDERING OF MATERIALS. SUCH VARIATIONS SHALL NOT BE CAUSE FOR ADDITIONAL COMPENSATION FOR A CHANGE IN THE SCOPE OF WORK, HOWEVER, THE CONTRACTOR WILL BE PAID FOR THE QUANTITY ACTUALLY FURNISHED AT THE UNIT PRICE BID FOR THE WORK.

EXISTING REINFORCEMENT BARS EXTENDING INTO THE REMOVAL AREA SHALL BE CLEANED, STRAIGHTENED, AND INCORPORATED INTO THE NEW CONSTRUCTION. ANY REINFORCEMENT BARS THAT ARE DAMAGED DURING CONCRETE REMOVAL SHALL BE REPLACED WITH AN APPROVED BAR SPLICER OR ANCHORAGE SYSTEM. COST INCLUDED WITH CONCRETE REMOVAL.

JOINT OPENINGS SHALL BE ADJUSTED ACCORDING TO ARTICLE 520.04 OF THE STANDARD SPECIFICATIONS WHEN THE DECK IS POURED AT AN AMBIENT TEMPERATURE OTHER THAN 50°F.

THE ABUTMENT SURFACE IN THE AREAS OF EXPANSION JOINT REPLACEMENT SHALL HAVE A TINED FINISH AS PER ARTICLE 420.09(a)(1) OF THE STANDARD SPECIFICATIONS. COST INCLUDED WITH CONCRETE SUPERSTRUCTURE. THE DECK SURFACE IN THE AREAS OF EXPANSION JOINT REPLACEMENT SHALL BE GROOVED WITH THE DECK OVERLAY PER ARTICLE 503.16(a)(3)(b) OF THE STANDARD SPECIFICATIONS AND SHALL BE PAID AT THE BID PRICE PER SQUARE YARD FOR "BRIDGE DECK GROOVING."

PROTECTIVE COAT SHALL ONLY BE APPLIED TO THE DECK AND PARAPETS ADJACENT TO THE PROPOSED EXPANSION JOINTS AND THE NEW PARAPET CAPS, NOT THE MICROSILICA OVERLAY.

EXCAVATION WILL NOT BE REQUIRED FOR RIPRAP PLACEMENT. NO FILTER FABRIC OR BEDDING MATERIAL WILL BE REQUIRED. WORK SHALL CONSIST ONLY OF PLACING RIPRAP AS SHOWN ON THIS SHEET TO FILL EXISTING ERODED AREAS.

TOTAL BILL OF MATERIAL (069-0017)

ITEM	UNIT	QUANTITY
Concrete Removal	Cu. Yd.	6.5
Concrete Superstructure	Cu. Yd.	8.6
Bridge Deck Grooving	Sq. Yd.	572
Reinforcement Bars, Epoxy Coated	Pound	1230
Bar Splicers	Each	12
Preformed Joint Strip Seal	Foot	112
Bridge Deck Scarification, 1"	Sq. Yd.	594
Bridge Deck Microsilica Concrete Overlay, 2-1/2"	Sq. Yd.	594
Deck Slab Repair (Full Depth, Type II)	Sq. Yd.	5
Structural Repair of Concrete (Depth Equal to or Less Than 5")	Sq. Ft.	96
Floor Drains	Each	8
Plug Existing Floor Drains	Each	12
Cleaning and Painting Exposed Rebar	Sq. Ft.	110
Protective Coat	Sq. Yd.	33
Stone Dumped Riprap, Class A4	Ton	100
Controlled Low-Strength Material	Cu. Yd.	5

MODEL: Default
 FILE NAME: p:\w\l\04\EBRTEG\Illinois.gov\FM\DOT\Documents\DOT - Offices\District 13\CA\001\CA\01\Sheets\069-0017-Plan.dgn

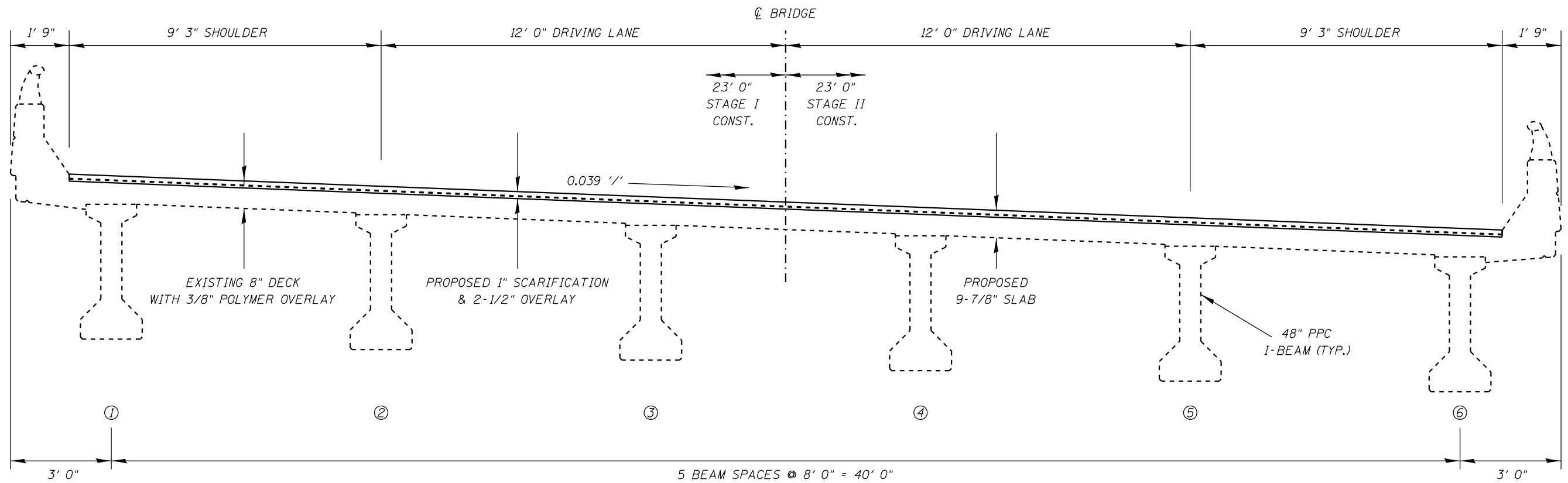
USER NAME = dudleybm	DESIGNED -	REVISED -
	DRAWN -	REVISED -
PLOT SCALE = 100.0000' / in.	CHECKED -	REVISED -
PLOT DATE = 8/23/2017	DATE -	REVISED -

**STATE OF ILLINOIS
 DEPARTMENT OF TRANSPORTATION**

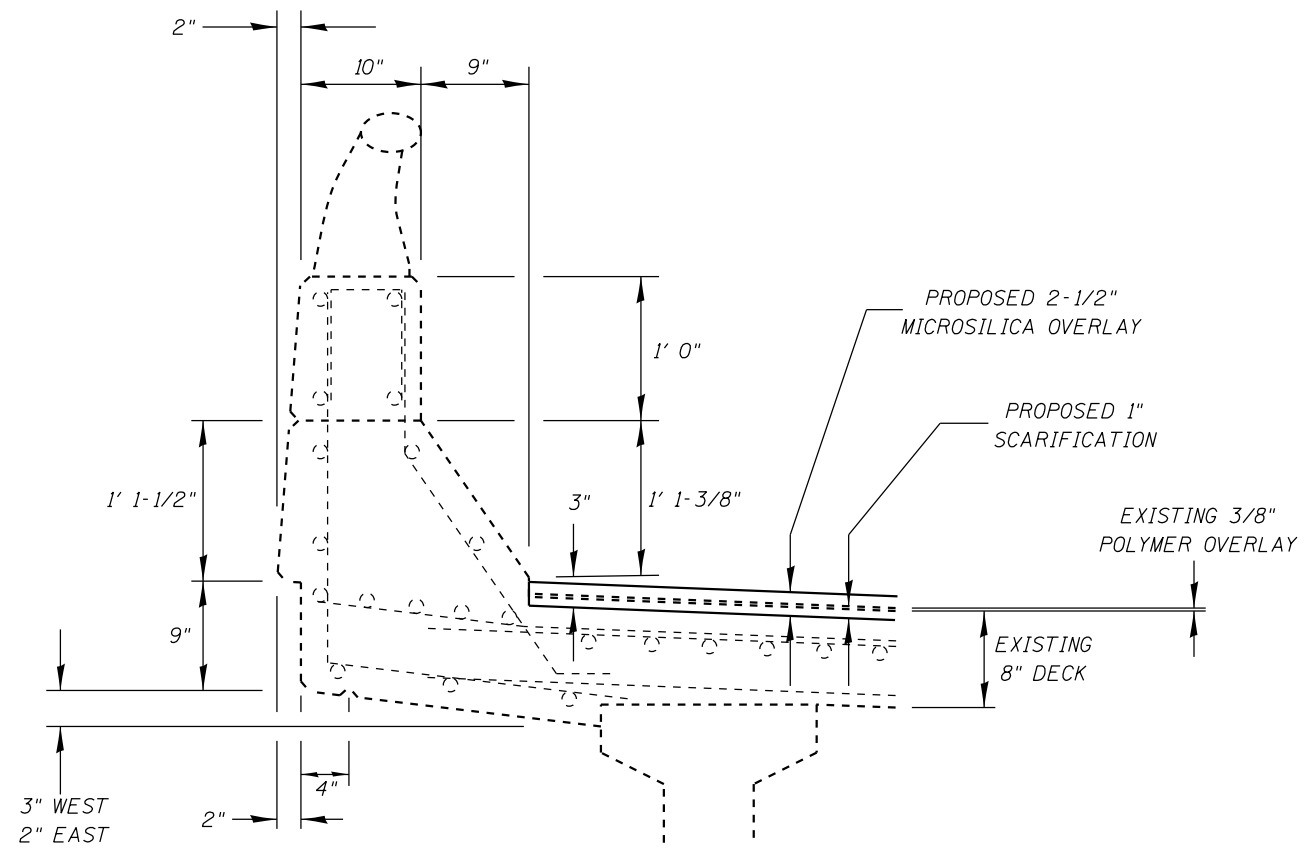
**GENERAL PLAN & ELEVATION
 SN 069-0017**

SCALE: SHEET 1 OF 9 SHEETS STA. TO STA.

F.A.P. RTE.	SECTION	COUNTY	TOTAL SHEETS	SHEET NO.
310	(124) BRR	MORGAN	18	10
CONTRACT NO. 72K13				
ILLINOIS FED. AID PROJECT				



BRIDGE CROSS SECTION (LOOKING NORTH)



TYPICAL PARAPET CROSS SECTION

MODEL: Default
 FILE: \\nas0101\B&E\BID\NTEC\Illinois\pwr\pwr\DOT\Documents\13DOT\Office\13DOT\13\CAD\DATA\CAD\Sheet\13\Sheet\13\Sheet\13.dgn

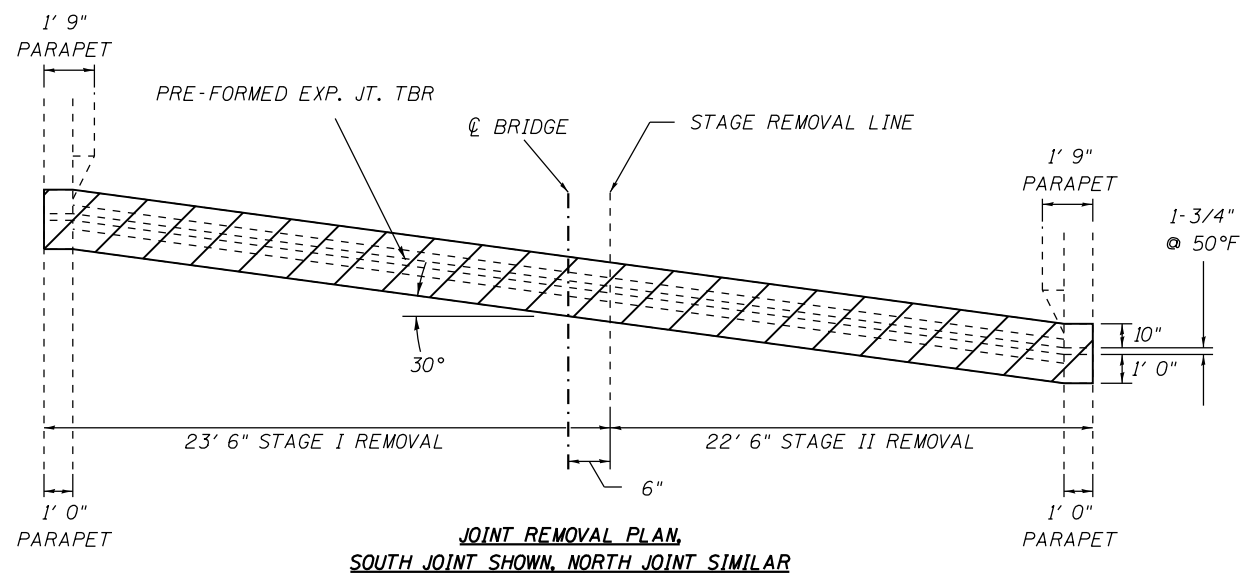
USER NAME = dudleybm	DESIGNED -	REVISED -
	DRAWN -	REVISED -
PLOT SCALE = 100.0000' / in.	CHECKED -	REVISED -
PLOT DATE = 8/23/2017	DATE -	REVISED -

STATE OF ILLINOIS
DEPARTMENT OF TRANSPORTATION

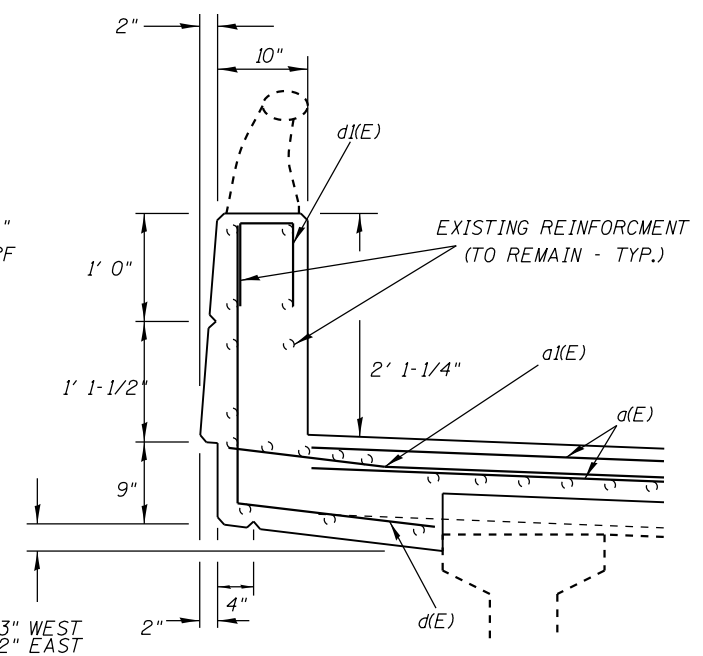
BRIDGE CROSS SECTION
SN 069-0017

SCALE: SHEET 2 OF 9 SHEETS STA. TO STA.

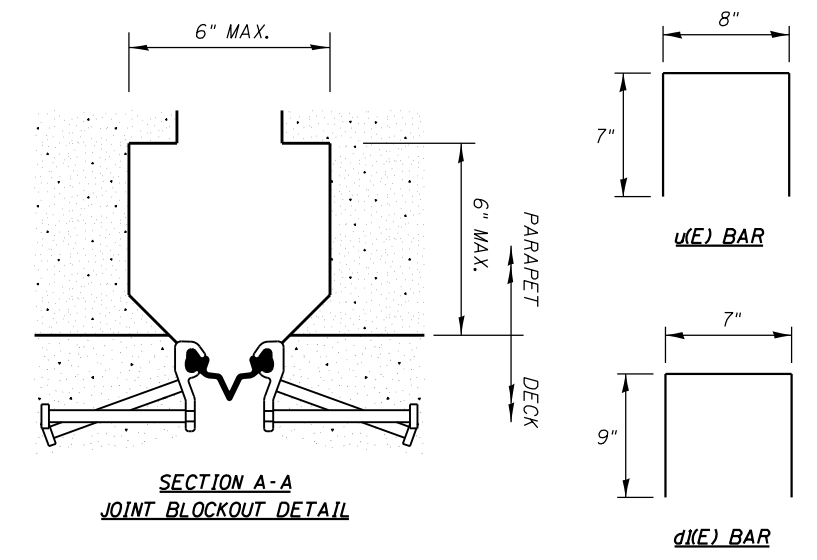
F.A.P. RTE.	SECTION	COUNTY	TOTAL SHEETS	SHEET NO.
310	(124) BRR	MORGAN	18	11
CONTRACT NO. 72K13			ILLINOIS FED. AID PROJECT	



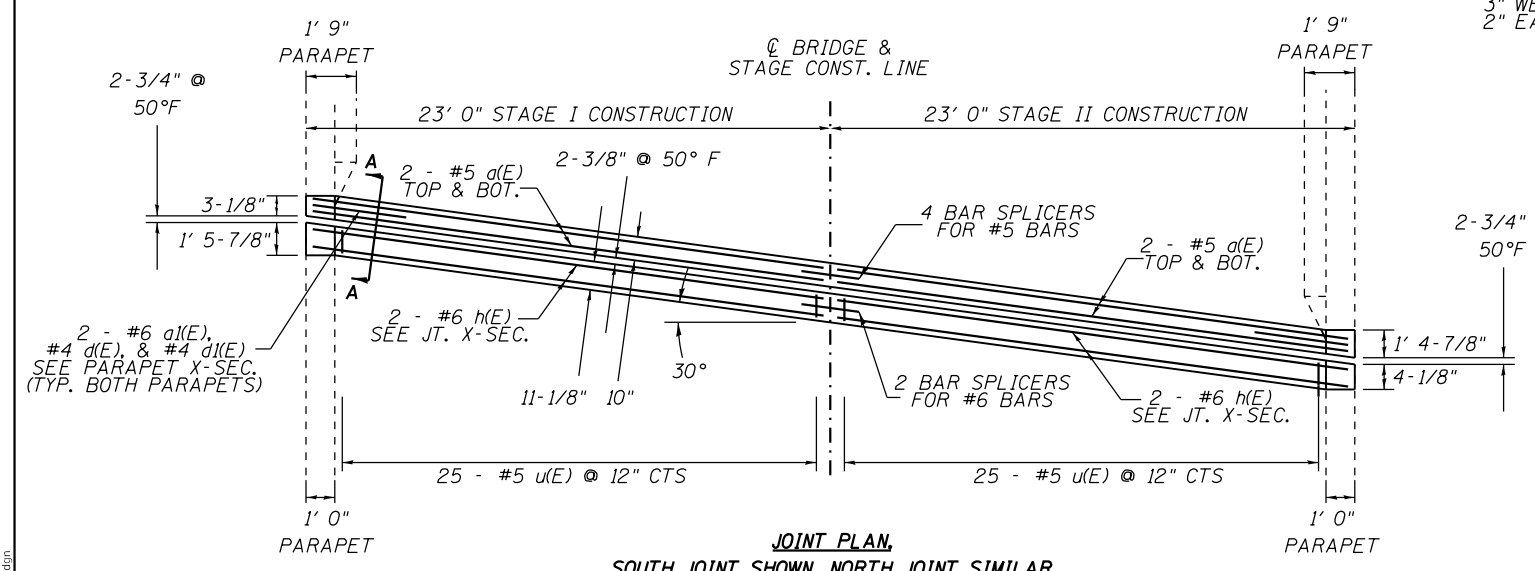
**JOINT REMOVAL PLAN,
SOUTH JOINT SHOWN, NORTH JOINT SIMILAR**



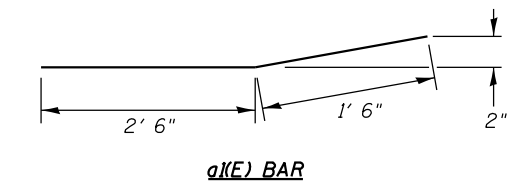
PARAPET CROSS SECTION AT JOINT



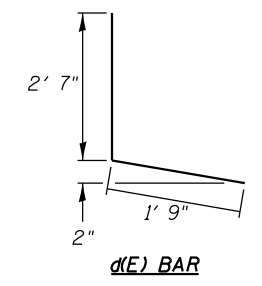
**SECTION A-A
JOINT BLOCKOUT DETAIL**



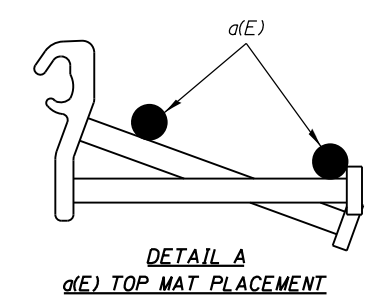
**JOINT PLAN,
SOUTH JOINT SHOWN, NORTH JOINT SIMILAR**



a(E) BAR



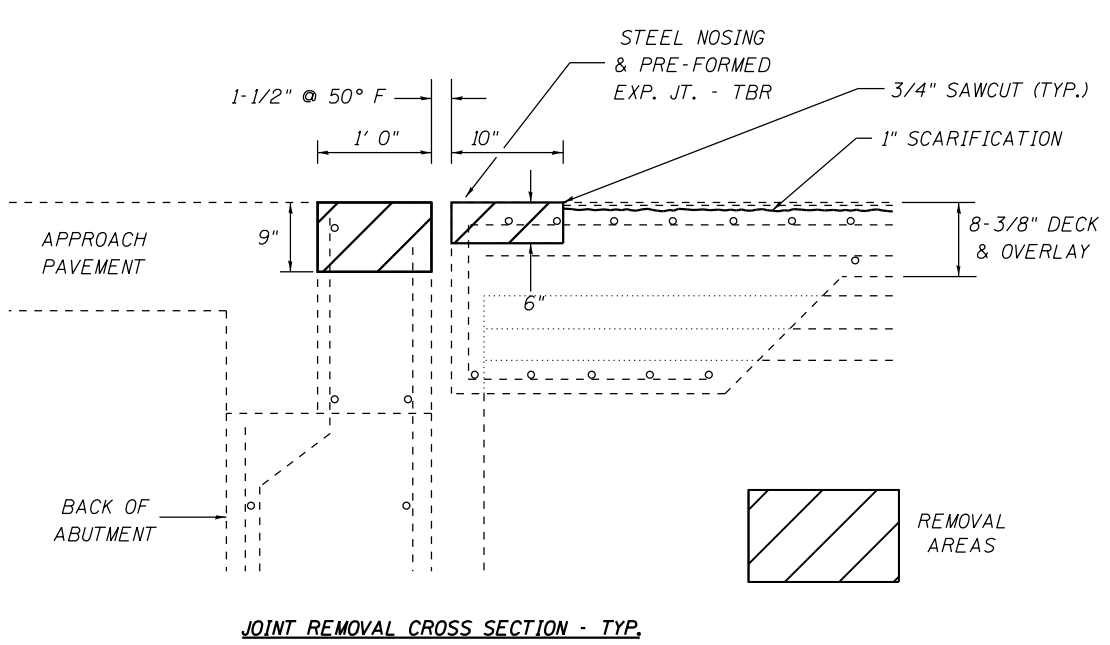
d(E) BAR



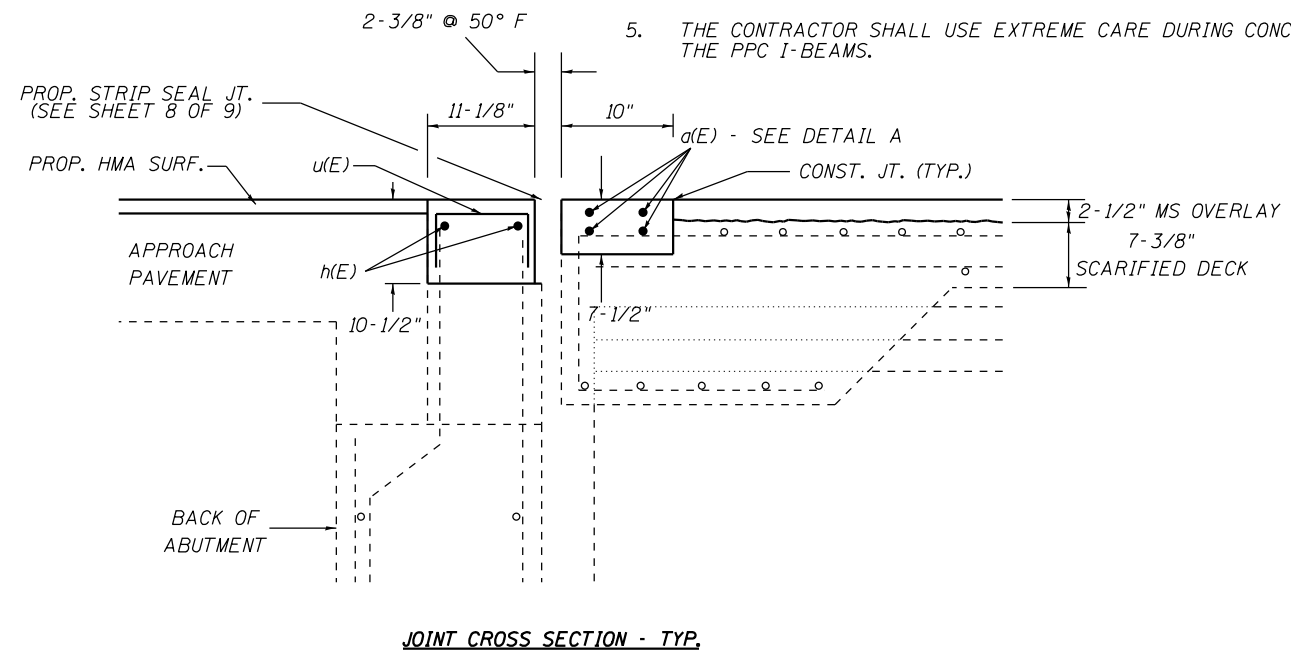
**DETAIL A
d(E) TOP MAT PLACEMENT**

NOTES:

1. ANY BRIDGE RAIL HARDWARE ENCOUNTERED IN THE REMOVAL AREAS SHALL BE LEFT IN PLACE AND RE-INCORPORATED INTO THE NEW CONCRETE.
2. REMOVAL OF EXISTING EXPANSION JOINT SHALL BE INCLUDED IN THE COST OF CONCRETE REMOVAL.
3. CONCRETE REMOVAL AT THE NORTHWEST PARAPET SHALL BE EXTENDED LONGITUDINALLY TO INCLUDE THE EXISTING BRIDGE NAME PLATE. THE NAME PLATE SHALL BE SALVAGED AND RE-INCORPORATED INTO THE NEW PARAPET, COST INCLUDED IN CONCRETE SUPERSTRUCTURE.
4. A 6" X 6" BLOCKOUT WILL BE PERMITTED IN THE BASE OF THE PARAPET AT THE EXPANSION JOINT IN ORDER TO FACILITATE JOINT SEAL INSTALLATION.
5. THE CONTRACTOR SHALL USE EXTREME CARE DURING CONCRETE REMOVAL SO AS NOT TO DAMAGE THE PPC I-BEAMS.



JOINT REMOVAL CROSS SECTION - TYP.



JOINT CROSS SECTION - TYP.

BILL OF MATERIAL - 2 JOINTS				
BAR	#	SIZE	LENGTH	SHAPE
a(E)	16	#5	25' 0"	—
a(E)	8	#6	4' 0"	—
d(E)	8	#4	4' 4"	—
d(E)	8	#4	2' 1"	⊏
h(E)	8	#6	25' 0"	⊏
u(E)	100	#5	1' 10"	⊏
REINFORCEMENT BARS (EPOXY COATED)		POUND	1000	
CONC. SUPERSTRUCTURE		CU YD	6.1	
CONC. REMOVAL		CU YD	5.4	

MODEL: Default
 FILE: \\paulb@rediron.net\lln\ok.gov\pww\DOT\Documents\DOT - Offices\Director\6\Projects\0672\13\CADData\CAD\Revised\0672\13\pban.dwg
 PLOT SCALE = 100.0000' / in.
 PLOT DATE = 8/23/2017




USER NAME = dudleybm	DESIGNED -	REVISED -
	DRAWN -	REVISED -
PLOT SCALE = 100.0000' / in.	CHECKED -	REVISED -
PLOT DATE = 8/23/2017	DATE -	REVISED -

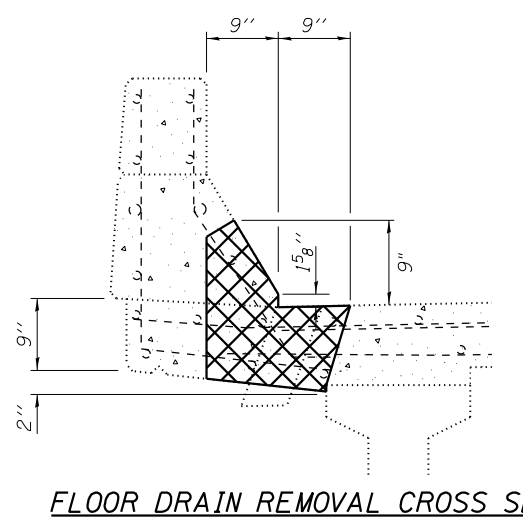
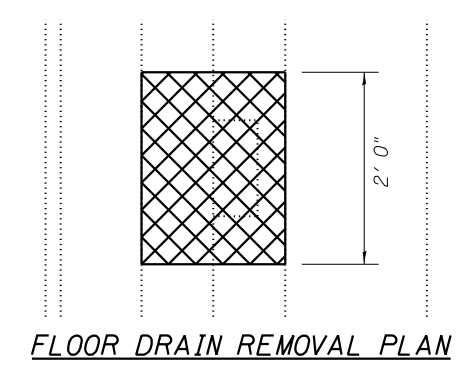
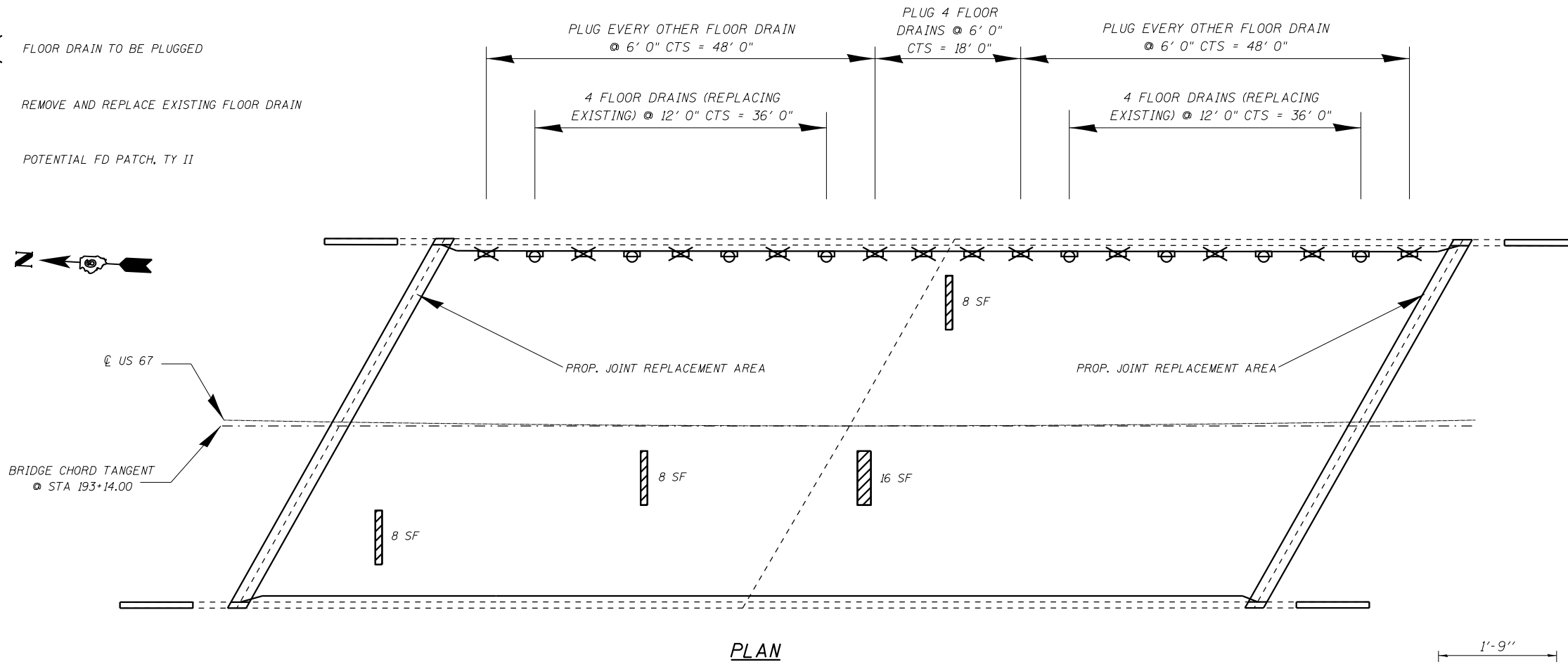
**STATE OF ILLINOIS
DEPARTMENT OF TRANSPORTATION**

**JOINT DETAILS
SN 069-0017**

SCALE: SHEET 3 OF 9 SHEETS STA. TO STA.

F.A.P. RTE.	SECTION	COUNTY	TOTAL SHEETS	SHEET NO.
310	(124) BRR	MORGAN	18	12
ILLINOIS FED. AID PROJECT			CONTRACT NO. 72K13	

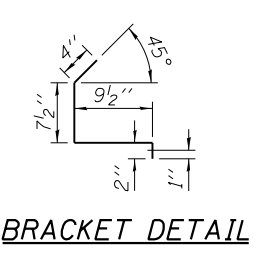
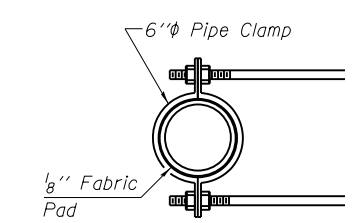
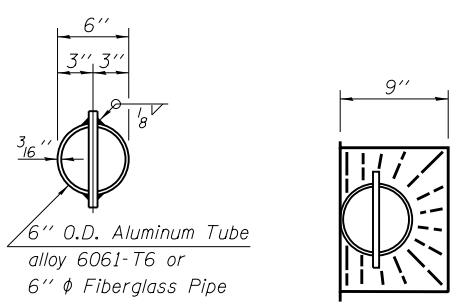
-  FLOOR DRAIN TO BE PLUGGED
-  REMOVE AND REPLACE EXISTING FLOOR DRAIN
-  POTENTIAL FD PATCH, TY II



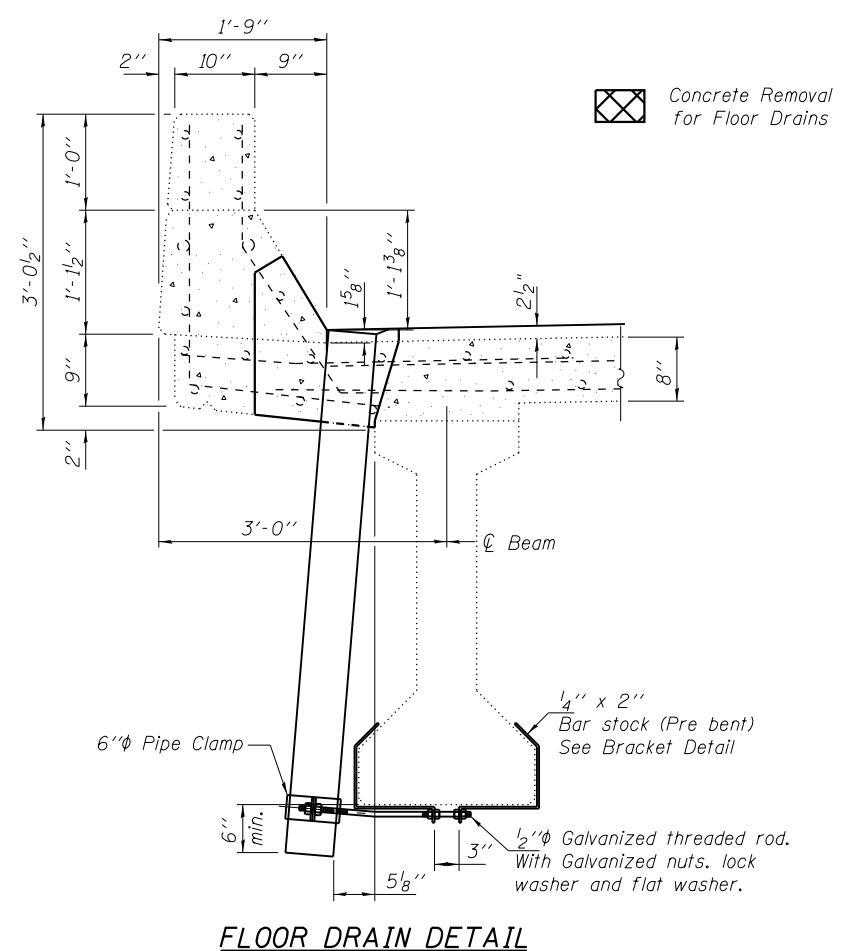
- NOTES:
- NO FULL DEPTH PATCHES ARE ANTICIPATED. FULL DEPTH PATCH AREAS IDENTIFIED REPRESENT AREAS WHICH HAVE POTENTIAL TO BECOME FULL DEPTH PATCHES DURING SCARIFICATION OPERATIONS. THESE AREAS SHALL NOT BE INTENTIONALLY REMOVED UNLESS DECK SCARIFICATION REVEALS UNSOUND CONCRETE.
 - EXTREME CAUTION SHALL BE EXERCISED WHILE REMOVING CONCRETE ADJACENT TO BEAMS. IN THESE AREAS, CONCRETE REMOVAL BELOW THE BOTTOM REINFORCEMENT MAT SHALL BE ACCOMPLISHED WITH CHIPPING HAMMERS NO LARGER THAN 30 LBS. ANY DAMAGE TO BEAMS SHALL BE REPAIRED AT THE CONTRACTOR'S EXPENSE.
 - EXISTING DECK REINFORCEMENT WHICH PREVENTS INSTALLATION OF THE PROPOSED FLOOR DRAINS MAY BE CUT TO FACILITATE DRAIN INSTALLATION. APPROVAL FROM THE ENGINEER SHALL BE OBTAINED PRIOR TO CUTTING ANY EXISTING REINFORCEMENT.
 - THE PIPE CLAMP, BEAM BRACKET, AND ALL HARDWARE NECESSARY FOR SECURING THE PROPOSED FLOOR DRAINS SHALL BE INCLUDED IN THE BID PRICE PER EACH FOR FLOOR DRAINS.
 - REMOVAL AREAS FOR FLOOR DRAIN REPLACEMENT SHALL RECEIVE A 1" SAW CUT AROUND THE ENTIRE PERIMETER BEFORE REMOVAL.
 - THE NEW FLOOR DRAINS SHALL BE CAST MONOLITHICALLY WITH THE MICROSILICA OVERLAY. THE PORTION OF THE PARAPET REMOVED ABOVE THE DECK GRADE MAY BE CAST SEPARATELY AFTER THE OVERLAY IS COMPLETED. REMOVAL AREAS FOR FLOOR DRAIN REPLACEMENT SHALL BE PAID AS CONCRETE REMOVAL. REMOVAL OF EXISTING FLOOR DRAINS SHALL BE INCLUDED IN THE COST FOR CONCRETE REMOVAL. REPLACEMENT OF AREAS REMOVED SHALL BE PAID AS CONCRETE SUPERSTRUCTURE, EXCEPT FOR A NOMINAL 2-1/2" OVERLAY THICKNESS WHICH SHALL BE INCLUDED IN THE MEASURED AREA FOR BRIDGE DECK MICROSILICA CONCRETE OVERLAY, 2-1/2".

BILL OF MATERIAL

ITEM	UNIT	QUANTITY
Deck Slab Repair (Full Depth, Type II)	Sq. Yd.	5
Floor Drains	Each	8
Plug Existing Floor Drains	Each	12
Concrete Removal	Cu. Yd.	1.1
Concrete Superstructure	Cu. Yd.	1.1



BRACKET DETAIL



FLOOR DRAIN DETAIL

MODEL: Default
 FILE: \\paulb@rediron.net\lln\ok.gov\pww\DOT\Documents\1301\1301000013\CAD\Drawings\DRG\XXXXXX-2-13-13.dwg
 PROJECT: 1301000013

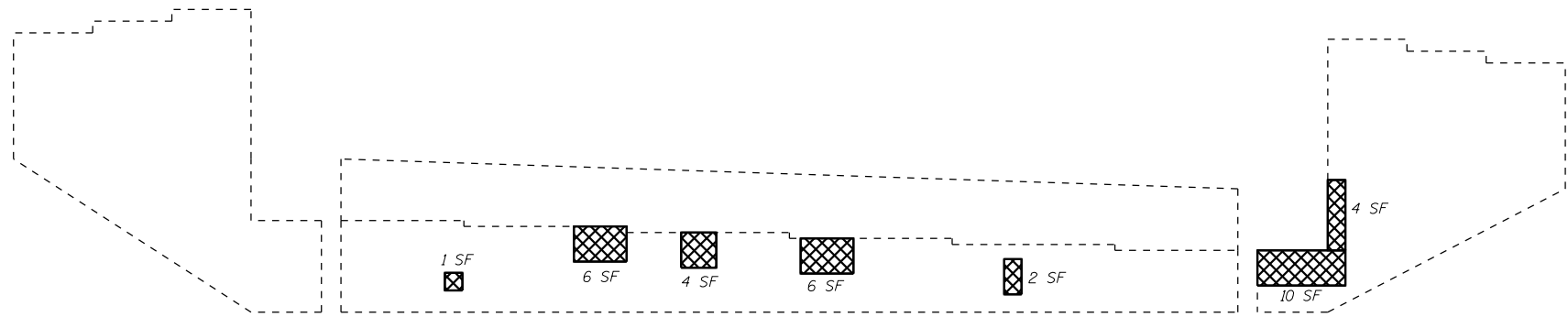
USER NAME = dudleybm	DESIGNED -	REVISED -
PLOT SCALE = 100.0000' / in.	DRAWN -	REVISED -
PLOT DATE = 8/23/2017	CHECKED -	REVISED -
	DATE -	REVISED -

**STATE OF ILLINOIS
DEPARTMENT OF TRANSPORTATION**

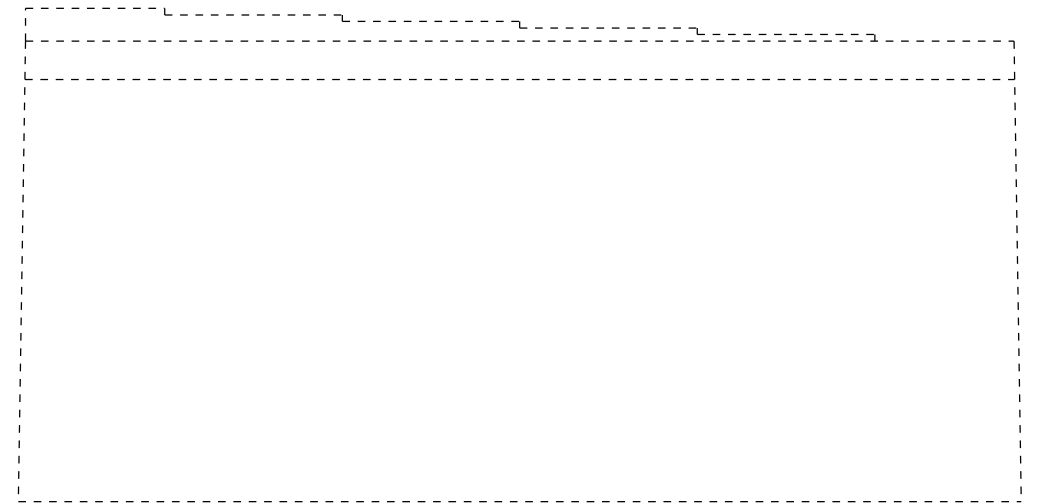
**DECK REPAIR & FLOOR DRAIN DETAILS
SN 069-0017**

SCALE: SHEET 4 OF 9 SHEETS STA. TO STA.

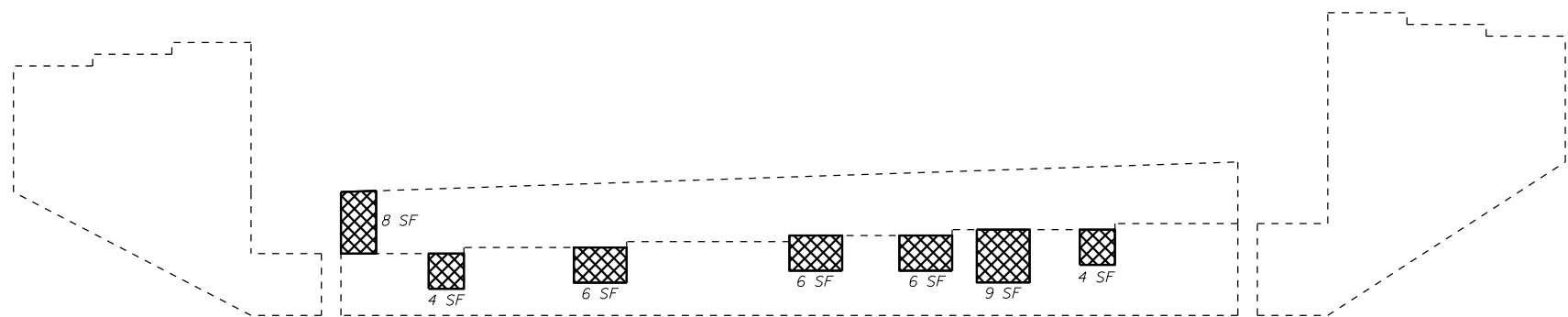
F.A.P. RTE. 310	SECTION (124) BRR	COUNTY MORGAN	TOTAL SHEETS 18	SHEET NO. 13
CONTRACT NO. 72K13				
ILLINOIS FED. AID PROJECT				



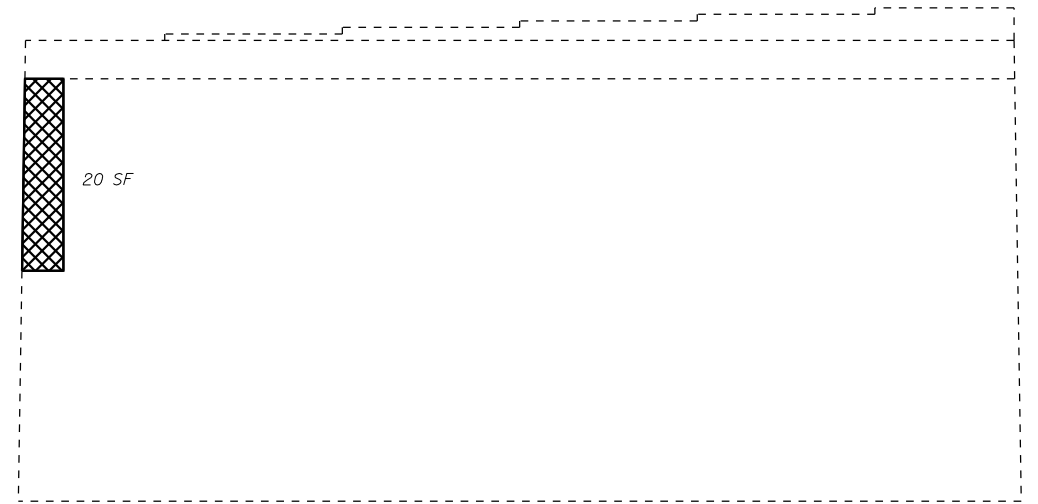
NORTH ABUTMENT ELEVATION - LOOKING NORTH



PIER ELEVATION - LOOKING NORTH



SOUTH ABUTMENT ELEVATION - LOOKING SOUTH



PIER ELEVATION - LOOKING SOUTH



STRUCTURAL REPAIR OF CONCRETE
(DEPTH EQUAL TO OR LESS THAN 5")

SUBSTRUCTURE REPAIR BILL OF MATERIAL

ITEM	UNIT	QUANTITY
Structural Repair of Concrete (Depth Equal to or Less Than 5")	Sq. Ft.	96

MODEL: Default
 FILE: \\mhc-pw\ulb\BEBID\NTEC\Illinois.gov\PW\DOT\Documents\DOT_Offices\Director @ Projects\0672\13\CADDData\CAD\Sheet5\DXF\Sheet5.dwg

USER NAME = dudleybm	DESIGNED -	REVISED -
PLOT SCALE = 100.0000' / in.	DRAWN -	REVISED -
PLOT DATE = 8/23/2017	CHECKED -	REVISED -
	DATE -	REVISED -

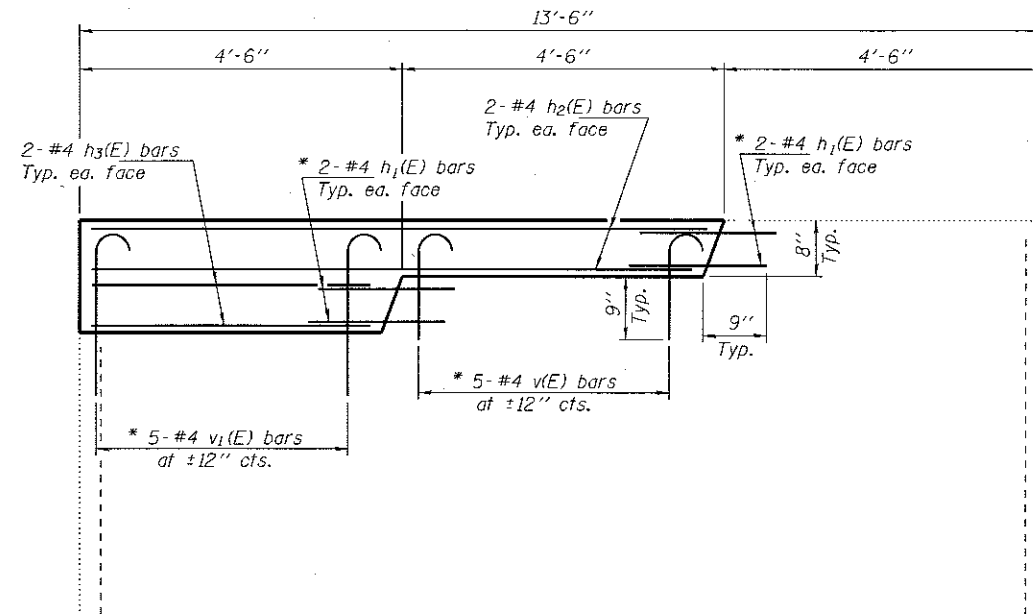
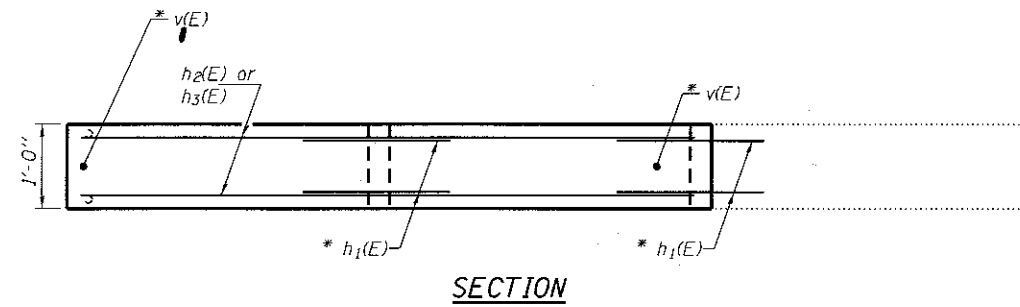
**STATE OF ILLINOIS
DEPARTMENT OF TRANSPORTATION**

**SUBSTRUCTURE REPAIR DETAIL
SN 069-0017**

SCALE: SHEET 5 OF 9 SHEETS STA. TO STA.

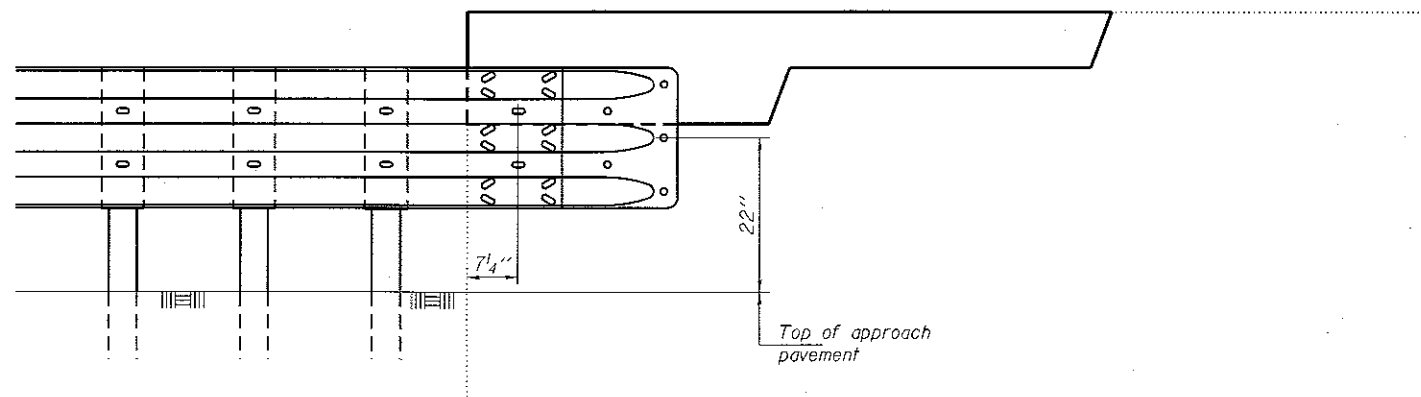
F.A.P. RTE.	SECTION	COUNTY	TOTAL SHEETS	SHEET NO.
310	(124) BRR	MORGAN	18	14
ILLINOIS FED. AID PROJECT			CONTRACT NO. 72K13	

NOTES

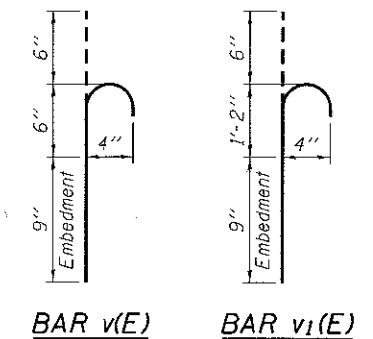


PROPOSED ELEVATION

* Epoxy grout $h_1(E)$, $v_1(E)$ & $v_1(E)$ bars in 9" min. holes according to Article 584 of the Standard Specifications. Cost included with Reinforcement Bars, Epoxy Coated.



GUARDRAIL LOCATION



BAR $v(E)$ BAR $v_1(E)$

**BILL OF MATERIAL
4 WINGWALLS**

Bar	No.	Size	Length	Shape
$h_1(E)$	32	#4	1'-9"	—
$h_2(E)$	16	#4	8'-6"	—
$h_3(E)$	16	#4	4'-0"	—
$v(E)$	20	#4	1'-9"	┌
$v_1(E)$	20	#4	2'-5"	┌
Concrete Superstructure			Cu. Yd.	1.4
Reinforcement Bars, Epoxy Coated			Pound	230

MODEL: Default
 FILE NAME: p:\w\44848DANTEG Illinois.gov\FWIDOT\Documents\DOT Offices\District 6\Projects\0672K13\CAD\04a\CAD\SheetD\xxxxx.rvt-plan.dgn

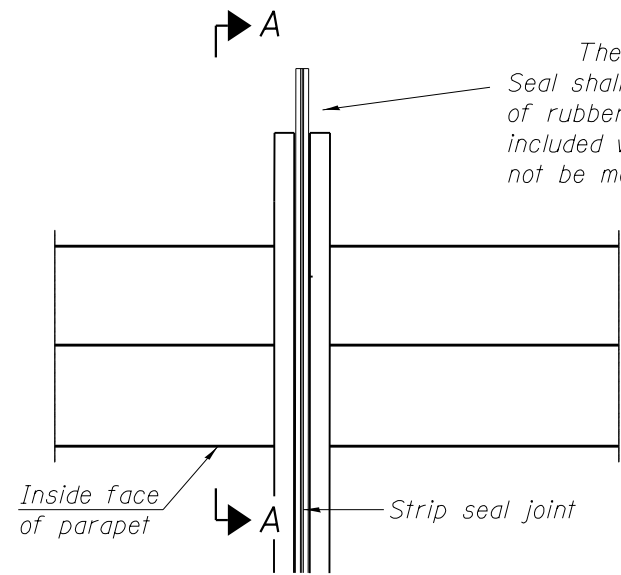
USER NAME = dudleybm	DESIGNED -	REVISED -
PLOT SCALE = 100.0000' / in.	DRAWN -	REVISED -
PLOT DATE = 8/23/2017	CHECKED -	REVISED -
	DATE -	REVISED -

**STATE OF ILLINOIS
DEPARTMENT OF TRANSPORTATION**

**PARAPET MODIFICATION DETAIL
SN 069-0017**

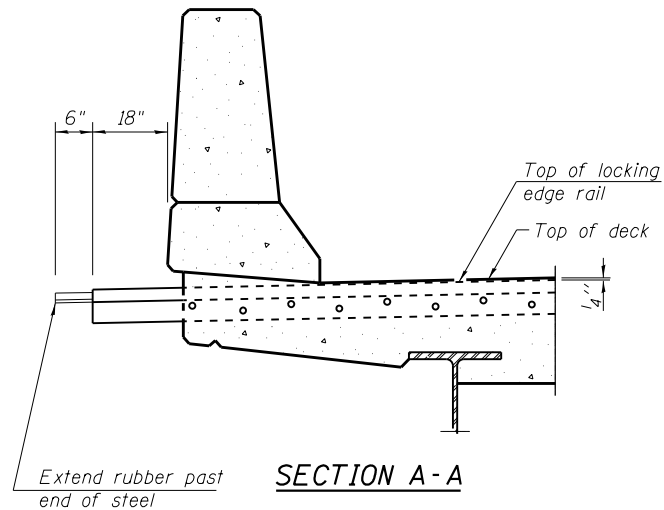
SCALE: SHEET 7 OF 9 SHEETS STA. TO STA.

F.A.P. RTE.	SECTION	COUNTY	TOTAL SHEETS	SHEET NO.
310	(124) BRR	MORGAN	18	16
ILLINOIS FED. AID PROJECT			CONTRACT NO. 72K13	



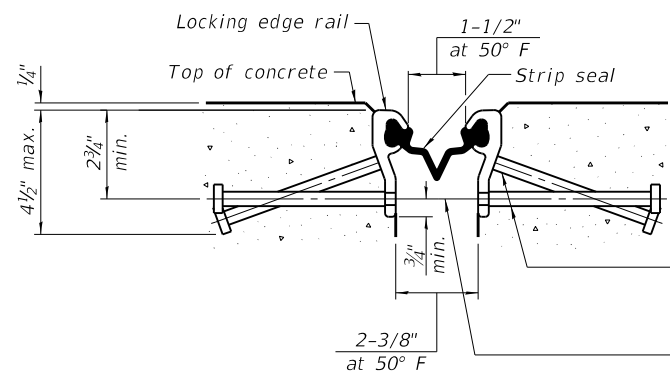
PLAN THROUGH PARAPET

The pay limits for Preformed Joint Strip Seal shall be to the end of the steel plate. The 6" of rubber extending past the end of steel shall be included with Preformed Joint Strip Seal and shall not be measured for payment.



SECTION A-A

Notes:
 The strip seal shall be made continuous and shall have a minimum thickness of 1/4". The configuration of the strip seal shall match the configuration of the locking edge rails. Open or "webbed" strip seal gland configurations are not permitted. The gland shall be sized for a maximum rated movement of 4 inches.
 The locking edge rails depicted are configured for typical applications and are conceptual only. The actual configuration of the locking edge rails and matching strip seal may vary from manufacturer to manufacturer provided they fit the application and meet the minimum anchorage shown. Flanged edge rails, however, will not be allowed. Locking edge rails may exceed the 4 1/2" maximum depth provided the anchorage system is revised according to the manufacturer's recommendation.
 The manufacturer's recommended installation methods shall be followed.
 All steel components shall be galvanized after fabrication according to Article 520.03 of the Standard Specifications.
 The Maximum space between locking edge rail segments shall be 3/16" and sealed with a suitable sealant; however, any rail joint within 10' measured perpendicular to the face of the curb or parapet shall be welded as shown in the locking edge rail splice detail.
 Cost of parapet sliding plates, embedded plates, and anchorage studs included with Preformed Joint Strip Seal.
 34" F-shape barrier shown, 42" F-shape similar as noted.
 The concrete opening below the strip seal will vary based on the locking edge rail chosen by the Contractor. Deck and parapet lengths shown elsewhere in the plans are dimensioned to the concrete opening, not the joint opening, and are based on the rolled locking edge rail. If the Contractor elects to use a different locking edge rail, dimensional adjustments may be required. One exception to this would be the strip seal joint at the end of the precast bridge approach slab. For these cases the pavement connector length shall be adjusted, not the length of the bridge approach slab.

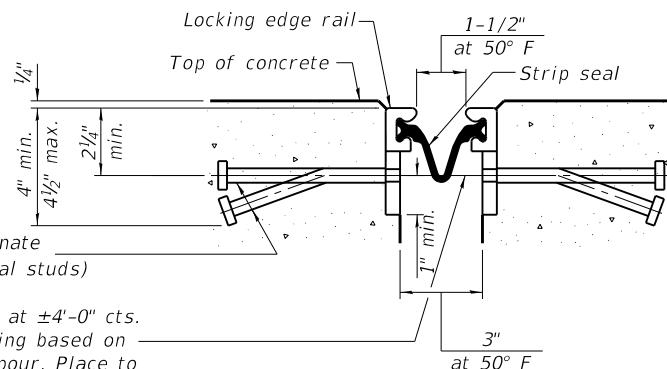


SHOWING ROLLED RAIL JOINT

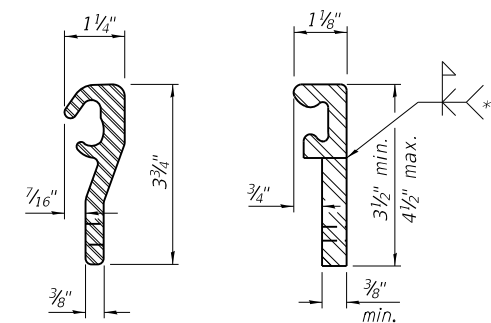
* 3/8" Ø x 6" studs @ 6" cts. (alternate angled/bent studs with horizontal studs)
 3/8" Ø threaded rods in 7/16" Ø holes at ±4"-0" cts. for holding the proper joint opening based on the temperature during the deck pour. Place to miss studs. All rods shall be burned, or sawed off flush with the plates after concrete is set.

SECTION THROUGH JOINT

* Granular or solid flux filled headed studs conforming to Article 1006.32 of the Std. Specs., automatically end welded.

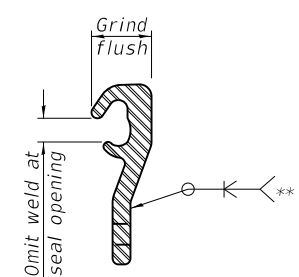


SHOWING WELDED RAIL JOINT



LOCKING EDGE RAILS

** Back gouge not required if complete joint penetration is verified by mock-up.



LOCKING EDGE RAIL SPLICE

The inside of the locking edge rail groove shall be free of weld residue. Rolled rail shown, welded rail similar.

BILL OF MATERIAL

Item	Unit	Total
Preformed Joint Strip Seal	Foot	112

MODEL: Default
 FILE: \\mllc-pw\ulb\BIBID\NTEC\Illinois\gov\PIWDOT\Documents\DOT - Offices\Director @ Project\0672K13\CADD\DATA\CAD\Sheet\SDXXXXXX-SP-PLAN.dgn

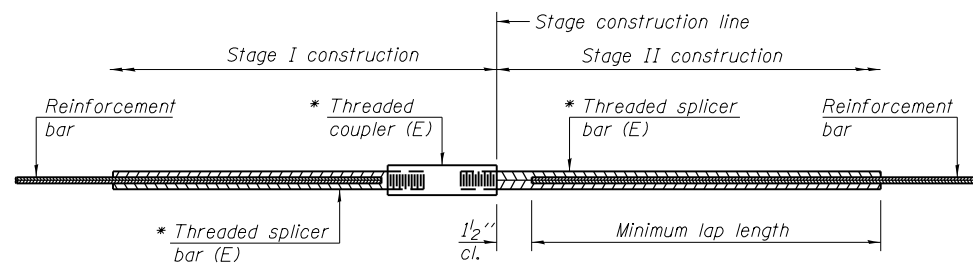
USER NAME = dudleybm	DESIGNED -	REVISED -
PLOT SCALE = 100.0000' / in.	DRAWN -	REVISED -
PLOT DATE = 8/23/2017	CHECKED -	REVISED -
	DATE -	REVISED -

**STATE OF ILLINOIS
 DEPARTMENT OF TRANSPORTATION**

**PREFORMED JOINT STRIP SEAL
 SN 069-0017**

SCALE: SHEET 8 OF 9 SHEETS STA. TO STA.

F.A.P. RTE.	SECTION	COUNTY	TOTAL SHEETS	SHEET NO.
310	(124) BRR	MORGAN	18	17
			CONTRACT NO. 72K13	
ILLINOIS FED. AID PROJECT				

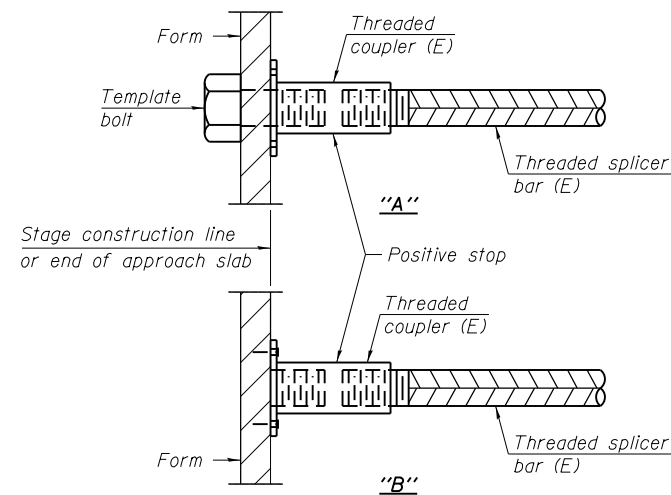


STANDARD BAR SPLICER ASSEMBLY

Threaded splicer bar length = min. lap length + 1 1/2" + thread length

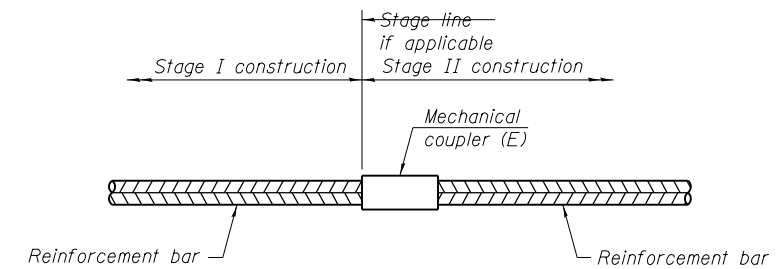
* Epoxy not required on Bar Splicer Assembly components used in conjunction with black bars.

Location	Bar size	No. assemblies required	Minimum lap length
Abuts. (deck side)	#5	8	3' 6"
Abuts. (appr. side)	#6	4	4' 0"



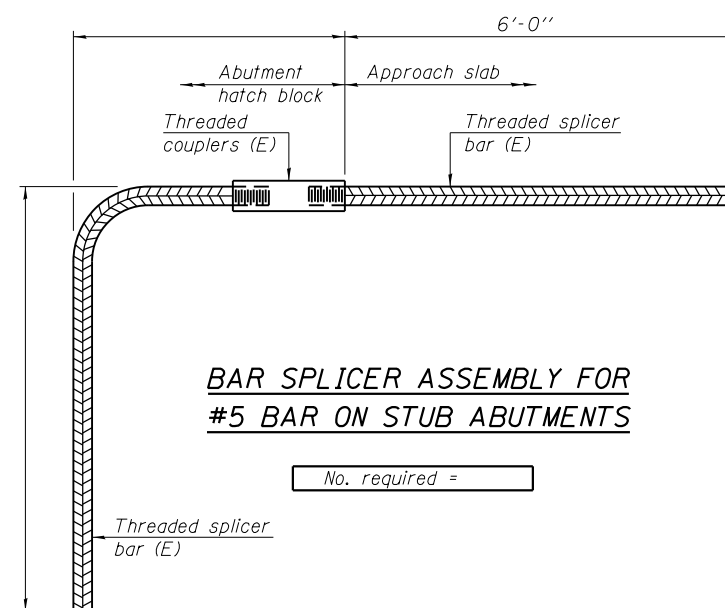
INSTALLATION AND SETTING METHODS

"A" : Set bar splicer assembly by means of a template bolt.
 "B" : Set bar splicer assembly by nailing to wood forms or cementing to steel forms.
 (E) : Indicates epoxy coating.



STANDARD MECHANICAL SPLICER

Location	Bar size	No. assemblies required



BAR SPLICER ASSEMBLY FOR #5 BAR ON STUB ABUTMENTS

No. required =

NOTES

Splicer bars shall be deformed with threaded ends and have a minimum 60 ksi yield strength.
 All reinforcement shall be lapped and tied to the splicer bars.
 Bar splicer assemblies shall be epoxy coated according to the requirements for reinforcement bars. See Section 508 of the Standard Specifications.
 See approved list of bar splicer assemblies and mechanical splicers for alternatives.

BSD-1

6-8-15

MODEL: Default
 FILE: \\nas01.cba.illinois.gov\pww\DOT\Documents\DOT_Offices\DLierfert @Projects\0672413\CADDData\CAD\SheetSet\DOT\SheetSet\BRR\BRR.dwg

USER NAME = dudleybm	DESIGNED -	REVISED -
PLOT SCALE = 100.0000' / in.	DRAWN -	REVISED -
PLOT DATE = 8/23/2017	CHECKED -	REVISED -
	DATE -	REVISED -

STATE OF ILLINOIS
 DEPARTMENT OF TRANSPORTATION

BAR SPLICERS DETAILS
 SN 069-0017

SCALE: SHEET 9 OF 9 SHEETS STA. TO STA.

F.A.P. RTE.	SECTION	COUNTY	TOTAL SHEETS	SHEET NO.
310	(124) BRR	MORGAN	18	18
CONTRACT NO. 72K13				
ILLINOIS FED. AID PROJECT				