

STATE OF ILLINOIS
DEPARTMENT OF TRANSPORTATION

F.A.I. RTE.	SECTION	COUNTY	TOTAL SHEETS	SHEET NO.
72	(75-4, 75-5) DR	PIKE	9	1
		ILLINOIS	CONTRACT NO. 72K17	

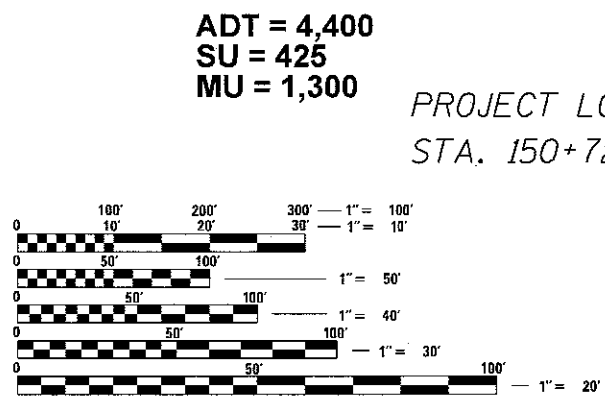
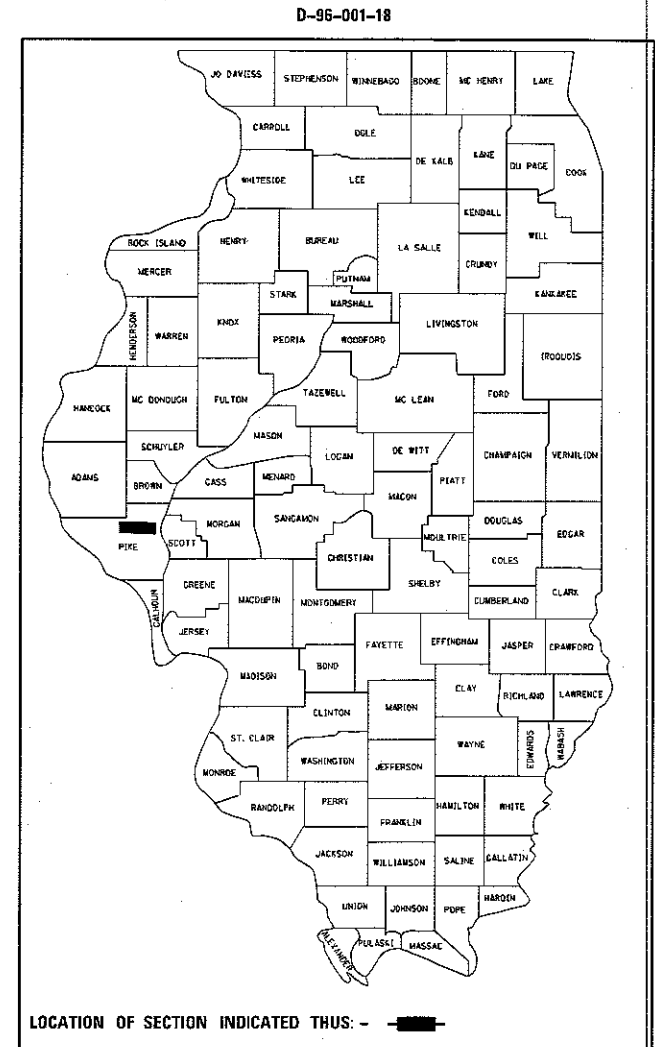
FOR INDEX OF SHEETS, SEE SHEET NO. 2

PROPOSED IMPROVEMENTS

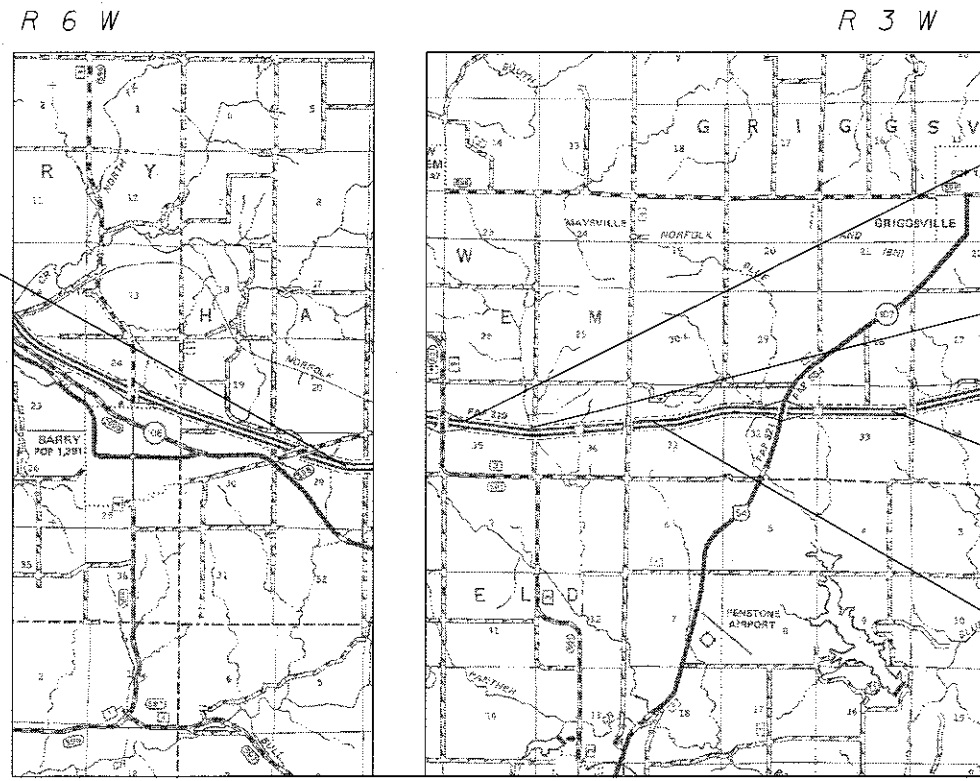
FAI 72 (I-72)
SECTION (75-4, 75-5) DR
CULVERT LINERS

PIKE CO.

C-96-004-18



ADT = 4,400
SU = 425
MU = 1,300
PROJECT LOC #1
STA. 150+72



- PROJECT LOC #2
STA. 42+90
- PROJECT LOC #3
STA. 82+24
- PROJECT LOC #5
STA. 101+00
- PROJECT LOC #4
STA. 148+10

FULL SIZE PLANS HAVE BEEN PREPARED USING STANDARD ENGINEERING SCALES. REDUCED SIZED PLANS WILL NOT CONFORM TO STANDARD SCALES. IN MAKING MEASUREMENTS ON REDUCED PLANS, THE ABOVE SCALES MAY BE USED.

J.U.L.I.E.
JOINT UTILITY LOCATION INFORMATION FOR EXCAVATION
1-800-892-0123
OR 811

PROJECT ENGINEER : MIKE IRWIN - (217)524-7765
PROJECT MANAGER : TIM SHARP - (217)524-9160

CONTRACT NO. 72K17

STATE OF ILLINOIS
DEPARTMENT OF TRANSPORTATION

SUBMITTED 29 August 2017

[Signature]
REGION FOUR ENGINEER

Oct 13 2017
[Signature]
ENGINEER OF DESIGN AND ENVIRONMENT

Oct 13 2017
[Signature]
DIRECTOR OF HIGHWAYS, CHIEF ENGINEER

PRINTED BY THE AUTHORITY
OF THE STATE OF ILLINOIS

INDEX OF SHEETS

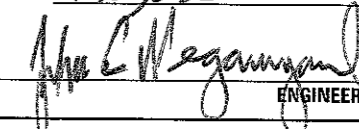
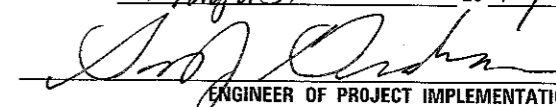
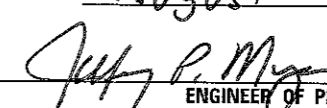
- 1. COVER
- 2. INDEX OF SHEETS, GENERAL NOTES, AND HIGHWAY STANDARDS
- 3. SUMMARY OF QUANTITIES AND SCHEDULES
- 4-8. PLANS
- 9. DETAILS

HIGHWAY STANDARDS

- 604101-01 MEDIAN INLET for 24" (600 mm) REINFORCED CONCRETE PIPE
- 701400-09 APPROACH TO LANE CLOSURE, FREEWAY/EXPRESSWAY
- 701401-10 LANE CLOSURE, FREEWAY/EXPRESSWAY
- 701901-06 TRAFFIC CONTROL DEVICES

GENERAL NOTES

- 1. ANY REFERENCE TO THE STANDARDS THROUGHOUT THE PLANS SHALL BE INTERPRETED TO BE THE LATEST STANDARDS OF THE DEPARTMENT AS INCLUDED IN THE PLANS.

STATE OF ILLINOIS DEPARTMENT OF TRANSPORTATION DIVISION OF HIGHWAYS DISTRICT 6	
EXAMINED	August 26 th 20 17
 ENGINEER OF OPERATIONS	
EXAMINED	August 22 nd 20 17
 ENGINEER OF PROJECT IMPLEMENTATION	
EXAMINED	August 28 20 17
 ENGINEER OF PROGRAM DEVELOPMENT	

FILE NAME =	USER NAME = sharptd	DESIGNED -	REVISED -	STATE OF ILLINOIS DEPARTMENT OF TRANSPORTATION	INDEX OF SHEETS, HIGHWAY STANDARDS AND GENERAL NOTES	F.A.I. RTE.	SECTION	COUNTY	TOTAL SHEETS	SHEET NO.	
S:\CONTRMINT\CAD\72K17 - FAI 72 (172)P1	E_CULVERT LINERS - PIKE CD\Plans\0672K17-01\01.dgn					72	(75-4, 75-5) DR	PIKE	9	2	
PLOT SCALE = 10.0000' / in.	CHECKED -	REVISED -				SCALE: _____ SHEET OF SHEETS STA. _____ TO STA. _____		CONTRACT NO. 72K17			
PLOT DATE = 8/29/2017	DATE -	REVISED -				ILLINOIS FED. AID PROJECT					



EX 36"φ x 26' CMP RISER
WITH MED INLET (STD 604106)
PR INSERTION CULVERT LINER,
36"φ x 26' (SEE DETAILS)

STA. 150+72 EX. 8' X 6'
R.C.B.C., 10 DEG. SKEW

FILE NAME =	USER NAME = sharptd	DESIGNED -	REVISD -
S:\CONTRMAINT_CAD\72K17 - FAI 72 (1 72)PI	PIPE_CULVERT LINERS - PIKE CO\Plans\0672K17-sh	DRAWN	REVISD
Default	PLOT SCALE = 40.0000' / in.	CHECKED -	REVISD -
	PLOT DATE = 9/1/2017	DATE -	REVISD -

**STATE OF ILLINOIS
DEPARTMENT OF TRANSPORTATION**

PLAN

SCALE: _____ SHEET OF SHEETS STA. _____ TO STA. _____

F.A.I. RTE.	SECTION	COUNTY	TOTAL SHEETS	SHEET NO.
72	(75-4, 75-5) DR	PIKE	9	4
CONTRACT NO. 72K17				
ILLINOIS FED. AID PROJECT				



EX 24"φ x 2' CMP RISER
WITH MED INLET (STD 604101)
PR REMOVE AND REPLACE W/
PIPE CULVERT, CL. A, TY. 3,
24"φ x 2' (SEE DETAILS)

STA. 42+90 EX. 8' X 6'
R.C.B.C., 15 DEG. SKEW

FILE NAME =	USER NAME = sharpd	DESIGNED -	REVISD -
S:\CONTRMAINT_CAD\72K17 - FAI 72 (172)PI	PIPE_CULVERT LINERS - PIKE CO\Plans\0672K17-sh	DRAWN	REVISD
Default	PLOT SCALE = 40.0000' / in.	CHECKED -	REVISD -
	PLOT DATE = 9/1/2017	DATE -	REVISD -

**STATE OF ILLINOIS
DEPARTMENT OF TRANSPORTATION**

PLAN

SCALE: _____ SHEET OF SHEETS STA. _____ TO STA. _____

F.A.I. RTE.	SECTION	COUNTY	TOTAL SHEETS	SHEET NO.
72	(75-4, 75-5) DR	PIKE	9	5
CONTRACT NO. 72K17				
ILLINOIS FED. AID PROJECT				



EX 24"φ x 11' CMP RISER
WITH MED INLET (STD 604101)
PR INSERTION CULVERT LINER,
24"φ x 11' (SEE DETAILS)
REMOVE AND REPLACE EX.
MEDIAN INLET

STA. 82+30 EX. DBL 12' x 12'
R.C.B.C., 25 DEG. SKEW

FILE NAME =	USER NAME = sharpd	DESIGNED -	REVISD -
S:\CONTRMAINT_CAD\72K17 - FA1 72 (1 72)PI	PIPE_CULVERT LINERS - PIKE CO\Plans\0672K17-sh	DRAWN	REVISD
Default	PLOT SCALE = 40.0000' / in.	CHECKED -	REVISD -
	PLOT DATE = 9/1/2017	DATE -	REVISD -

**STATE OF ILLINOIS
DEPARTMENT OF TRANSPORTATION**

PLAN

SCALE: _____ SHEET OF SHEETS STA. _____ TO STA. _____

F.A.I. RTE.	SECTION	COUNTY	TOTAL SHEETS	SHEET NO.
72	(75-4, 75-5) DR	PIKE	9	6
ILLINOIS FED. AID PROJECT			CONTRACT NO. 72K17	



EX 24"φ x 10' CMP RISER
WITH MED INLET (STD 604101)
PR INSERTION CULVERT LINER,
24"φ x 10' (SEE DETAILS)
REMOVE AND REPLACE EX.
MEDIAN INLET

STA. 148+10 EX. 8' x 8'
R.C.B.C., 5 DEG. SKEW

FILE NAME =	USER NAME = sharptd	DESIGNED -	REVISD -
S:\CONTRMAINT_CAD\72K17 - FAI 72 (1 72)PI	PIPE_CULVERT LINERS - PIKE CO\Plans\0672K17-sh	DRAWN	REVISD
Default	PLOT SCALE = 40.0000' / in.	CHECKED -	REVISD -
	PLOT DATE = 9/1/2017	DATE -	REVISD -

**STATE OF ILLINOIS
DEPARTMENT OF TRANSPORTATION**

PLAN			
SCALE: _____	SHEET _____	OF _____	SHEETS _____
STA. _____		TO STA. _____	

F.A.I. RTE.	SECTION	COUNTY	TOTAL SHEETS	SHEET NO.
72	(75-4, 75-5) DR	PIKE	9	7
CONTRACT NO. 72K17				
ILLINOIS FED. AID PROJECT				



EX 24"φ x 18' CMP RISER
WITH MED INLET (STD 604101)
PR INSERTION CULVERT LINER,
24"φ x 18' (SEE DETAILS)

STA. 101+00 EX. 9' x 5'
R.C.B.C., 30 DEG. SKEW

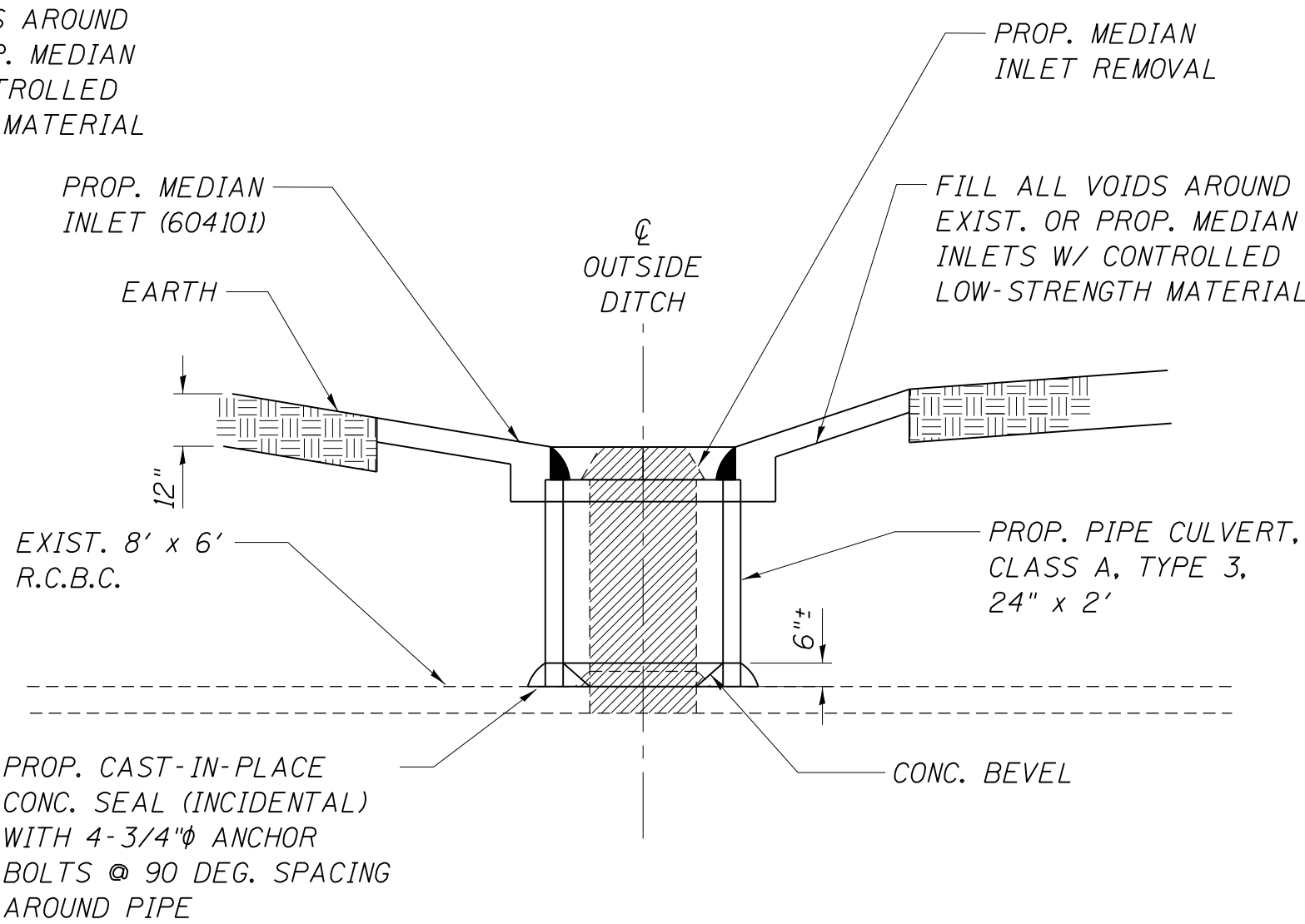
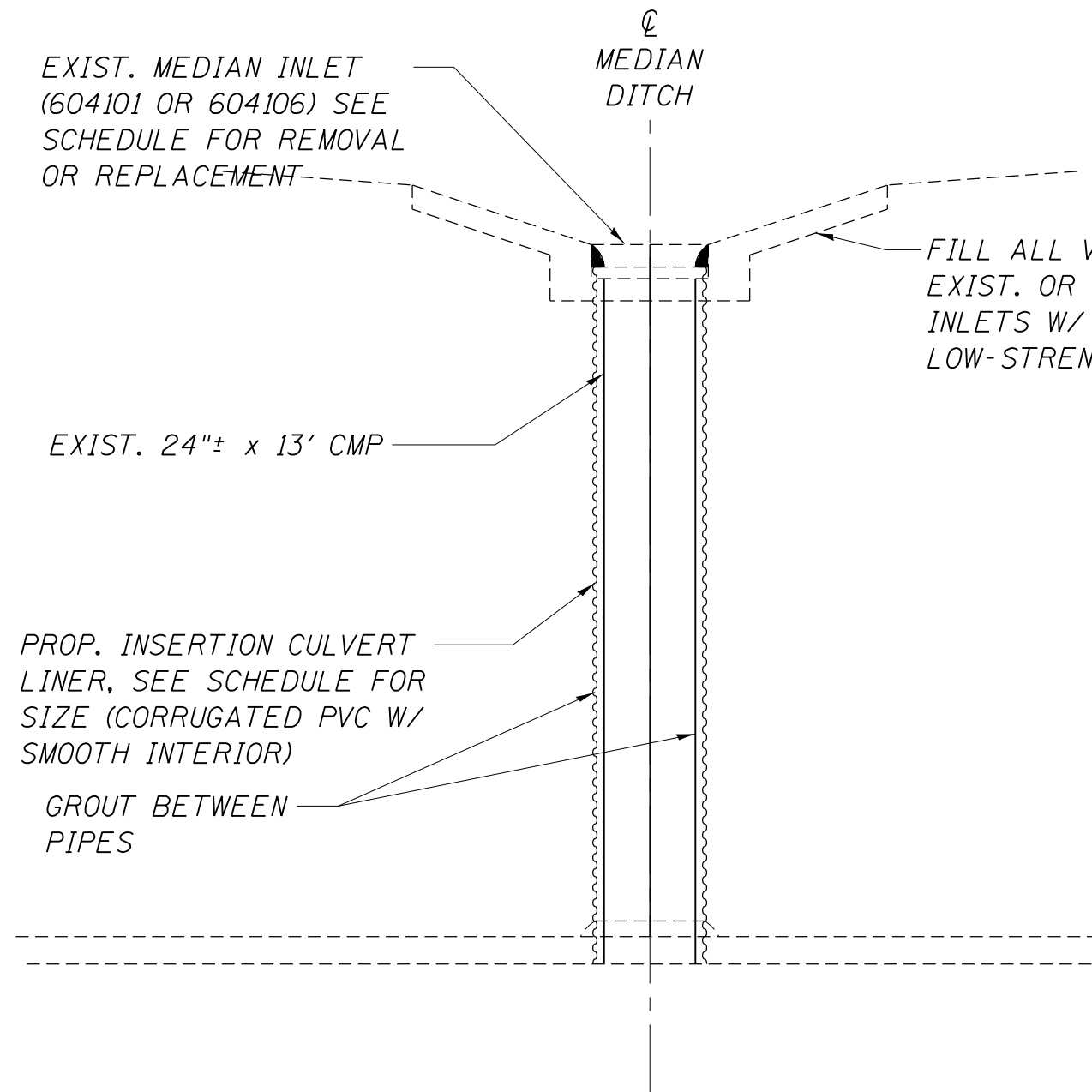
FILE NAME =	USER NAME = sharptd	DESIGNED -	REVISD -
S:\CONTRMAINT_CAD\72K17 - FAI 72 (1 72)PIPE CULVERT LINERS - PIKE CO\Plans\0672K17-sharptd\RAWNS.dgn	RAWNS	---	---
	PLOT SCALE = 40.0000' / in.	CHECKED -	REVISD -
Default	PLOT DATE = 9/1/2017	---	---
		DATE -	REVISD -
		---	---

**STATE OF ILLINOIS
DEPARTMENT OF TRANSPORTATION**

PLAN

SCALE: _____ SHEET OF SHEETS STA. _____ TO STA. _____

F.A.I. RTE.	SECTION	COUNTY	TOTAL SHEETS	SHEET NO.
72	(75-4, 75-5) DR	PIKE	9	8
CONTRACT NO. 72K17				
ILLINOIS FED. AID PROJECT				



LOCATION #1 STA. 150+72.00
 LOCATION #3 STA. 52+24.00
 LOCATION #4 STA. 148+10.00
 LOCATION #5 STA. 101+00.00

NOTE:
 BACKFILL EXCAVATED AREA WITH CA-06 (INCIDENTAL)

LOCATION #2 STA. 42+90.00

FILE NAME =	USER NAME = sharptd	DESIGNED -	REVISED -	STATE OF ILLINOIS DEPARTMENT OF TRANSPORTATION	DETAILS			F.A.I. RTE.	SECTION	COUNTY	TOTAL SHEETS	SHEET NO.
S:\CONTRMAINT_CAD\72K17 - FAI 72 (1 72)PIPE CULVERT LINERS - PIKE CO\Plans\0672K17-SHARP\DRAWING\15.dgn	PLOT SCALE = 3.0000' / 1" =	CHECKED -	REVISED -					72	(75-4, 75-5) DR	PIKE	9	9
Default	PLOT DATE = 9/1/2017	DATE -	REVISED -		SCALE: SHEET OF SHEETS STA. TO STA.			CONTRACT NO. 72K17				
										ILLINOIS FED. AID PROJECT		