

STATE OF ILLINOIS
DEPARTMENT OF TRANSPORTATION

F.A.J. RTE.	SECTION	COUNTY	TOTAL SHEETS	SHEET NO.
94	2017-0191	COOK	16	1
		ILLINOIS	CONTRACT NO. 62F38	

FOR INDEX OF SHEETS, SEE SHEET NO.

**PROPOSED
HIGHWAY PLANS**
FAI ROUTE 94: I-94 (EDENS EXPRESSWAY)
AT 1) GLENVIEW RD. & 2) LINCOLN AVE.
SECTION: 2017-0191
BRIDGE REPAIR (SUBSTRUCTURE REPAIRS)
COOK COUNTY
C-91-288-17

IMPROVEMENTS IS LOCATED IN THE VILLAGES OF GLENVIEW & MORTON GROVE.

SN 016-0821 I-94 (EDENS EXPWY)
AT GLENVIEW RD.

TRAFFIC DATA:
I-94 (EDENS EXPWY)
2016 ADT = 160,400
POSTED SPEED LIMIT = 55MPH

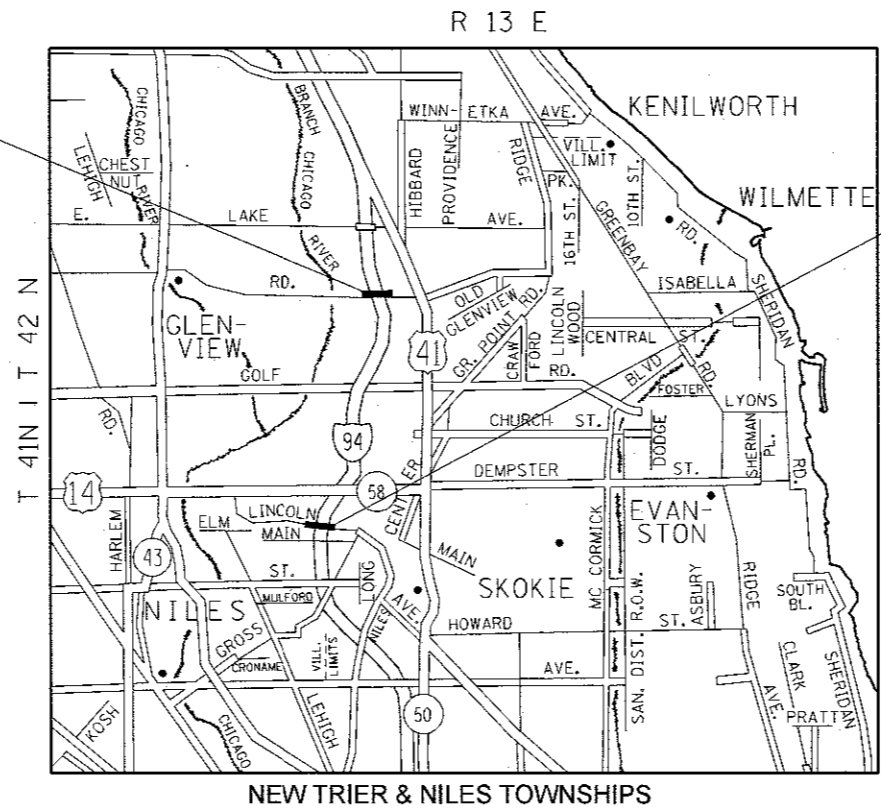
GLENVIEW RD.
2014 ADT = 12,600
POSTED SPEED LIMIT = 35MPH

LINCOLN AVE.
2014 ADT = 7,750
POSTED SPEED LIMIT = 25MPH

J.U.L.I.E.
JOINT UTILITY LOCATION INFORMATION FOR EXCAVATION
1-800-892-0123
OR 811

PROJECT ENGINEER: J. ALAIN MIDY (847) 221-3056
PROJECT MANAGER: ISSAM RAYYAN (847) 705-4178

CONTRACT NO. 62F38



SN 016-0826 I-94 (EDENS EXPWY)
AT LINCOLN AVE.



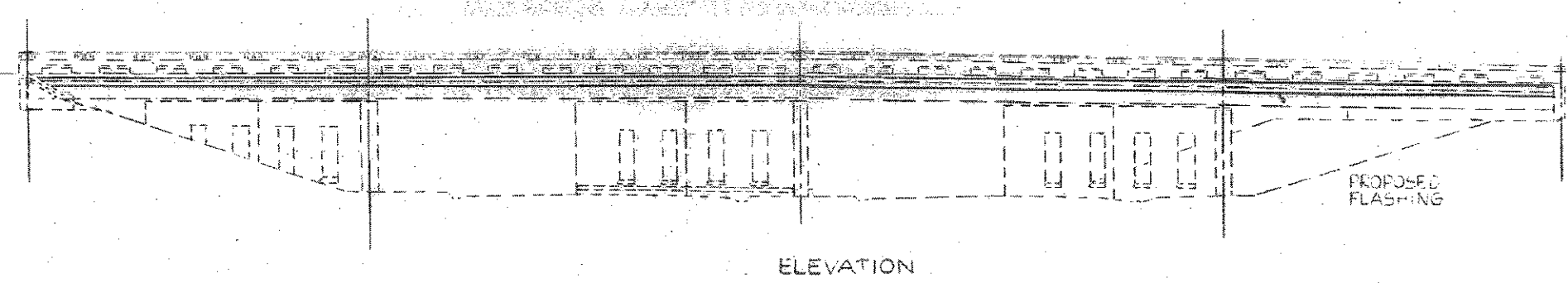
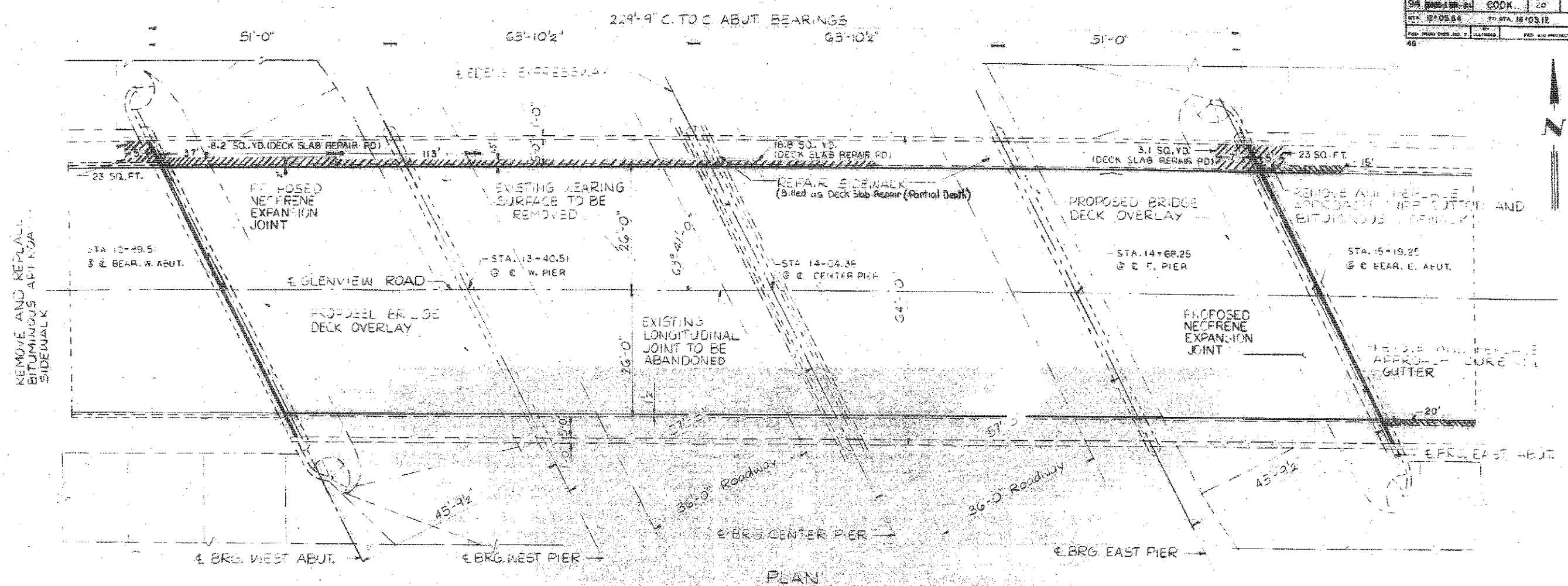
STATE OF ILLINOIS
DEPARTMENT OF TRANSPORTATION
SUBMITTED August 15 2017
Anthony J. Quigley / AS REGIONAL ENGINEER
Oct 13 2017
Hawson M. Addison PE/E ENGINEER OF DESIGN AND ENVIRONMENT
Oct 13 2017
Director of Program Development

NILES TOWNSHIP
PRINTED BY THE AUTHORITY
OF THE STATE OF ILLINOIS

URBAN 100% STATE

SUMMARY OF QUANTITIES				CONSTRUCTION TYPE CODE				SUMMARY OF QUANTITIES				CONSTRUCTION TYPE CODE			
CODE NO	ITEM	UNIT	TOTAL QUANTITIES	0013 BRIDGE 1 016-0821	0013 BRIDGE 2 016-0826			CODE NO	ITEM	UNIT	TOTAL QUANTITIES	0014 BRIDGE 1 016-0821	0014 BRIDGE 2 016-0826		
67000400	ENGINEER'S FIELD OFFICE, TYPE A	CAL MO	6	3	3										
67100100	MOBILIZATION	LSUM	1	0.5	0.5										
70400100	TEMPORARY CONCRETE BARRIER	FOOT	200	100	100										
70600250	IMPACT ATTENUATORS, TEMPORARY (NON-REDIRECTIVE), TEST LEVEL 3	EACH	2	1	1										
X7010410	SPEED DISPLAY TRAILER	CAL MO	2	1	1										
X7011015	TRAFFIC CONTROL AND PROTECTION (EXPRESSWAYS)	LSUM	1	0.5	0.5										
X7015005	CHANGEABLE MESSAGE SIGN	CAL DA	60	30	30										
X7040125	PINNING TEMPORARY CONCRETE BARRIER	EACH	12	6	6										
Z0012754	STRUCTURAL REPAIR OF CONCRETE (DEPTH EQUAL TO OR LESS THAN 5 INCHES)	SQ FT	1906	984	922										
Z0012755	STRUCTURAL REPAIR OF CONCRETE (DEPTH GREATER THAN 5 INCHES)	SQ FT	58	38	20										
Z0073200	TEMPORARY SHORING AND CRIBBING	EACH	13	11	2										

F.A.I. NO.	SECTION	COUNTY	TOTAL SHEETS	SHEET NO.
94	2017-0191	COOK	16	4
STA. 12+05.86		TO STA. 16+03.12		
FED. ROAD DIST. NO. 1		FED. AID PROJECT		



FOR TOTAL BILL OF MATERIALS SEE SH. 36

ILLINOIS DIVISION OF HIGHWAYS
GLENVIEW ROAD OVER EDENS EXPRESSWAY
 GENERAL PLAN
 SCALE: VERT. 1/8" = 1'-0"
 HORIZ. 1/4" = 1'-0"
 DATE: 4/78
 DRAWN BY: S.M.
 CHECKED BY: B.H.



David Carl Puzey 9/25/17
 Expires 11/30/18

USER NAME = saintvlch	DESIGNED - JAM	REVISED -
PLOT SCALE = 100.0000" / in.	DRAWN -	REVISED -
PLOT DATE = 8/9/2017	CHECKED - VHV	REVISED -
	DATE -	REVISED -

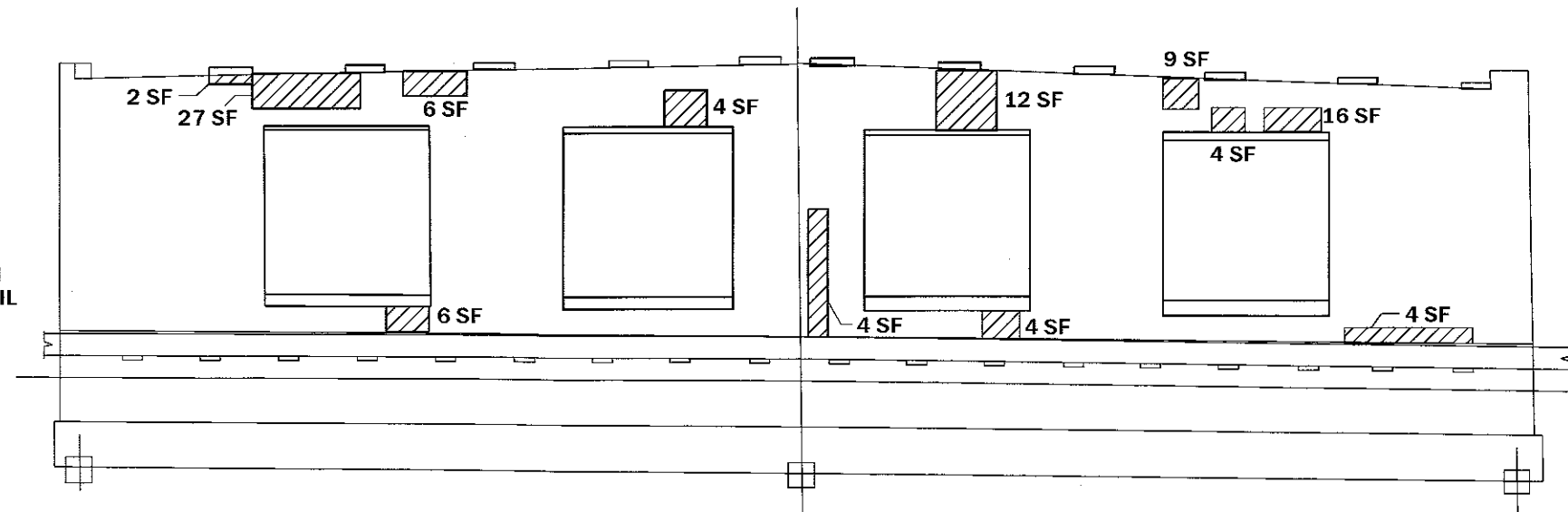
STATE OF ILLINOIS
 DEPARTMENT OF TRANSPORTATION

I-94 EDENS EXPWY AT GLENVIEW ROAD (SN 016-0821)
 PLAN AND PROFILE

F.A.I. RTE.	SECTION	COUNTY	TOTAL SHEETS	SHEET NO.
94	2017-0191	COOK	16	4
SCALE: SHEET OF SHEETS STA. TO STA.			CONTRACT NO. 62F38	
ILLINOIS FED. AID PROJECT				

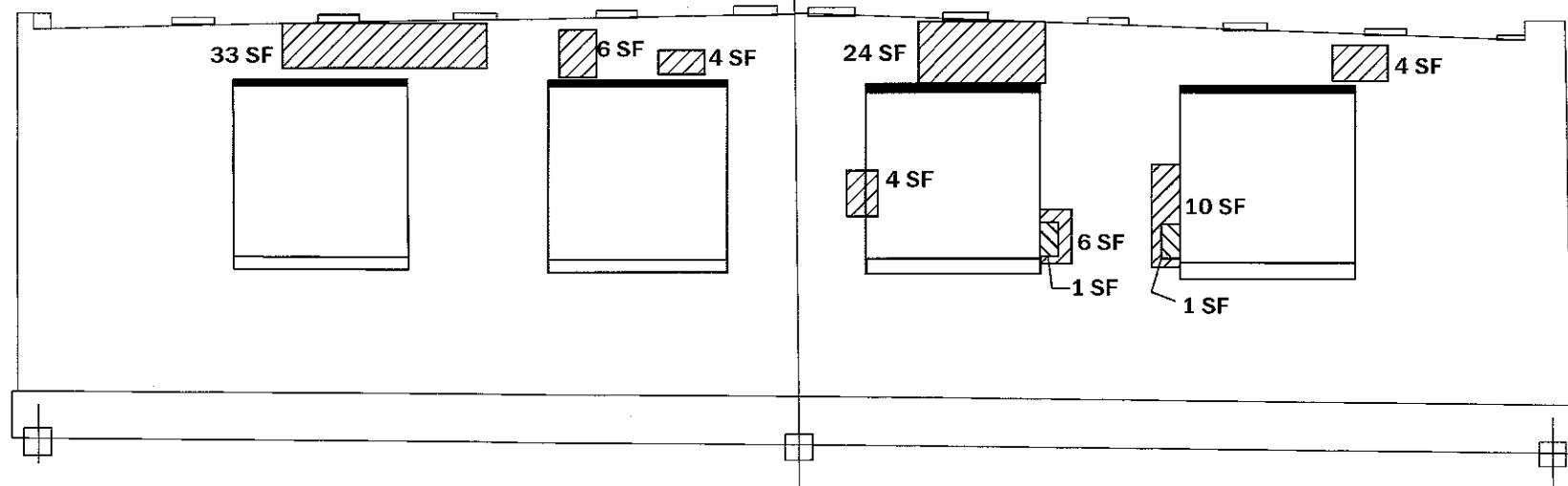
MODEL: Default
 FILE NAME: c:\p1046\BID\BID\BID\Documents\DOT Offices\District 3\Projects\0128817\CA\CA\plan.dwg
 PROJECT: 0128817

W-BEAM
GUARDRAIL

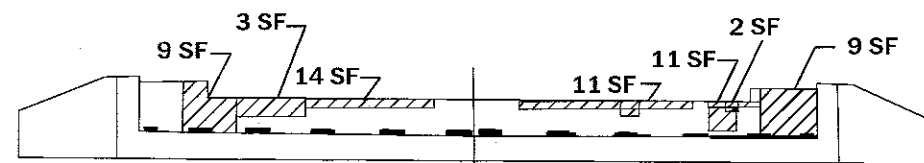


EAST PIER - WEST ELEVATION

- STRUCTURAL REPAIR OF CONCRETE \leq 5" - 194 SF
- STRUCTURAL REPAIR OF CONCRETE \geq 5" - 8 SF



EAST PIER - EAST ELEVATION



EAST ABUTMENT WEST ELEVATION

REACTIONS SN 016-0821

INTERIOR GIRDER REACTION TABLE					
	W. ABUTMENT	PIER 1	PIER 2	PIER 3	E. ABUTMENT
R DL (k)	18.9	63.6	64.0	63.6	18.9
R LL (k)	30.6	38.3	39.3	38.3	30.6
R IMP (k)	8.7	10.5	10.4	10.5	8.7
R (total) (k)	58.2	112.4	113.7	112.4	58.2

TOTAL BILL OF MATERIAL

ITEM	UNIT	QUANTITY
STRUCTURAL REPAIR OF CONCRETE \leq 5 INCHES	SQ FT	984
STRUCTURAL REPAIR OF CONCRETE \geq 5 INCHES	SQ FT	38
TEMPORARY SHORING	EACH	11

EAST PIER REPAIRS BILL OF MATERIAL (SN 016-0821)

ITEM	UNIT	QUANTITY
STRUCTURAL REPAIR OF CONCRETE \leq 5 INCHES	SQ FT	194
STRUCTURAL REPAIR OF CONCRETE \geq 5 INCHES	SQ FT	8

MODEL: Default
 FILE NAME: p:\1\1084EDIDMTEG Illinois.gov\PWDOT\Documents\DOT Office\Design\1\Projects\10128817\COB\BAA\Design\10128817-ans-plan.dgn

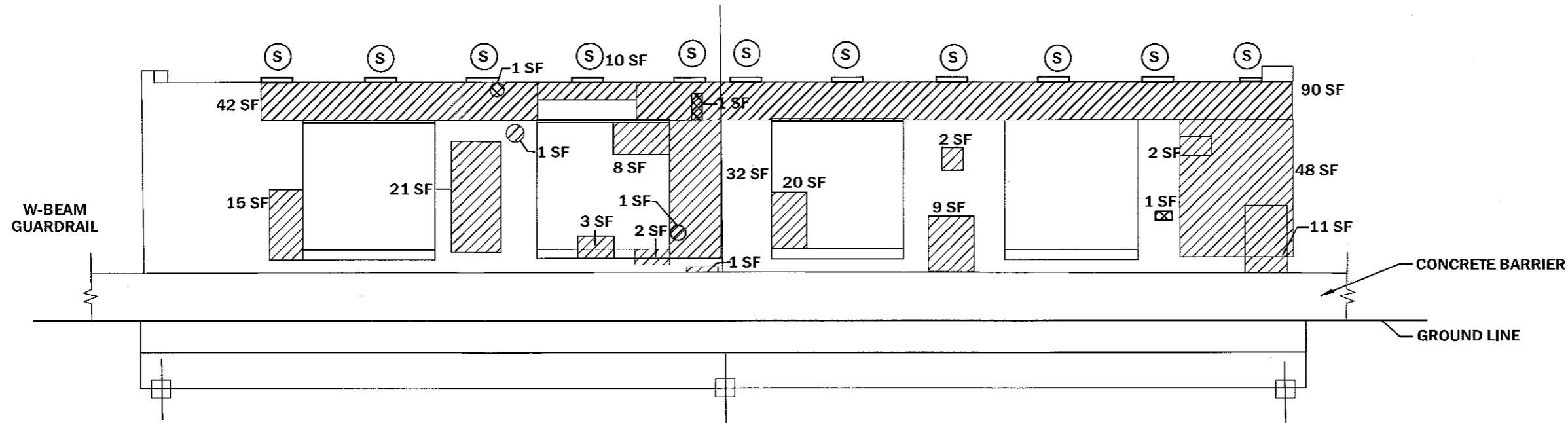
USER NAME = saintvlch	DESIGNED -	REVISED -
	DRAWN -	REVISED -
PLOT SCALE = 100.0000' / in.	CHECKED -	REVISED -
PLOT DATE = 8/23/2017	DATE -	REVISED -

**STATE OF ILLINOIS
DEPARTMENT OF TRANSPORTATION**

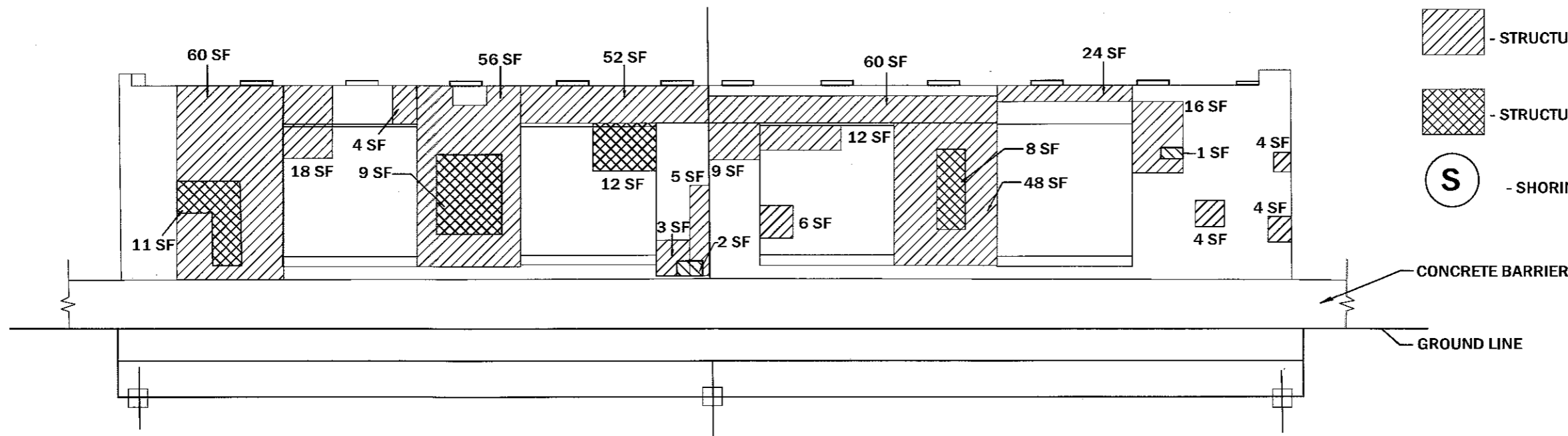
**I-94 EDENS EXPWY AT GLENVIEW ROAD (SN 016-0821)
EAST PIER REPAIRS**

SCALE: SHEET OF SHEETS STA. TO STA.

F.A.I. RTE. 94	SECTION 2017-0191	COUNTY COOK	TOTAL SHEETS 16	SHEET NO. 5
CONTRACT NO. 62F38				ILLINOIS FED. AID PROJECT



CENTER PIER - WEST ELEVATION



CENTER PIER - EAST ELEVATION

- STRUCTURAL REPAIR OF CONCRETE \leq 5" - 653 SF
- STRUCTURAL REPAIR OF CONCRETE \geq 5" - 21 SF
- SHORING - 11 EACH

CENTER PIER REPAIRS BILL OF MATERIAL

ITEM	UNIT	QUANTITY
STRUCTURAL REPAIR OF CONCRETE \leq 5 INCHES	SQ FT	653
STRUCTURAL REPAIR OF CONCRETE \geq 5 INCHES	SQ FT	21
TEMPORARY SHORING	EACH	11

MODEL: Default
 FILE NAME: P:\11\84848\EDATES\Illinois\pwr\pwr\DOT\Documents\DOT_Offices\012817\11\0000\0000\Design\MD_12817-shp-plan.dgn

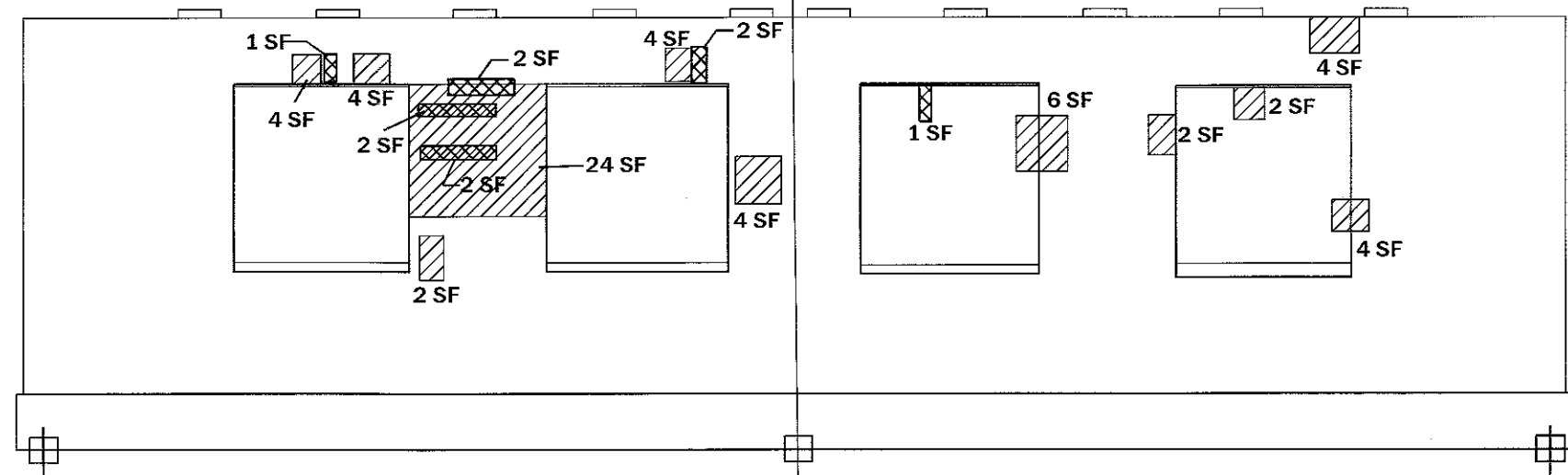
USER NAME = saintvich	DESIGNED -	REVISED -
	DRAWN -	REVISED -
PLOT SCALE = 100.0000' / in.	CHECKED -	REVISED -
PLOT DATE = 6/23/2017	DATE -	REVISED -

STATE OF ILLINOIS
DEPARTMENT OF TRANSPORTATION

I-94 EDENS EXPWY AT GLENVIEW ROAD (SN 016-0821)
CENTRAL PIER REPAIRS

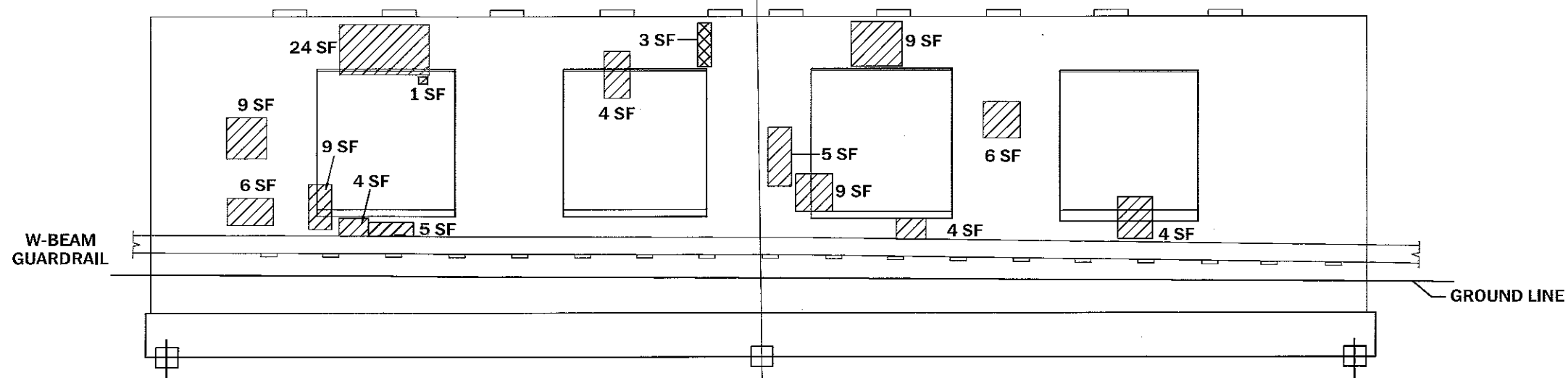
F.A.I. RTE.	SECTION	COUNTY	TOTAL SHEETS	SHEET NO.
94	2017-019I	COOK	16	6
CONTRACT NO. 62F38			ILLINOIS FED. AID PROJECT	

SCALE: SHEET OF SHEETS STA. TO STA.

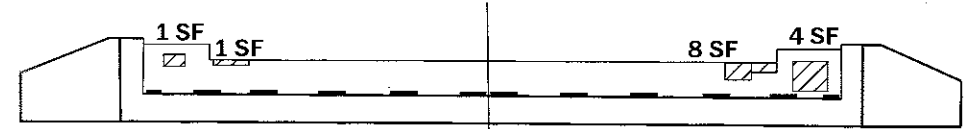


 - STRUCTURAL REPAIR OF CONCRETE \leq 5" - 137 SF

 - STRUCTURAL REPAIR OF CONCRETE \geq 5" - 9 SF



WEST PIER - EAST ELEVATION



EAST PIER REPAIRS BILL OF MATERIAL

ITEM	UNIT	QUANTITY
STRUCTURAL REPAIR OF CONCRETE \leq 5 INCHES	SQ FT	137
STRUCTURAL REPAIR OF CONCRETE \geq 5 INCHES	SQ FT	9

MODEL: Default
 FILE NAME: p:\w\084EBD\INTG Illinois.gov\FW\DOT\Documents\DOT Offices\Desic\1\Projects\012881\CAD\Drawings\0128817-11-17-17.dgn

USER NAME = saintvlch	DESIGNED -	REVISED -
	DRAWN -	REVISED -
PLOT SCALE = 100,0000' / in.	CHECKED -	REVISED -
PLOT DATE = 8/23/2017	DATE -	REVISED -

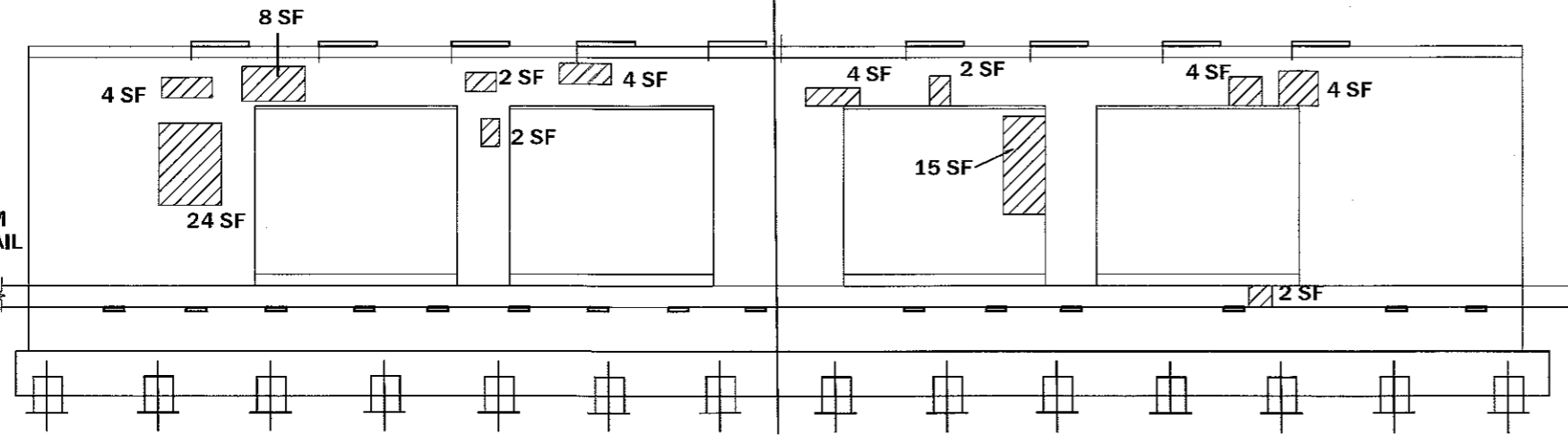
STATE OF ILLINOIS
DEPARTMENT OF TRANSPORTATION

I-94 EDENS EXPWY AT GLENVIEW ROAD (SN 016-0821)
WEST PIER REPAIRS

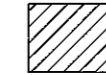
SCALE: SHEET OF SHEETS STA. TO STA.

F.A.I. RTE: 94	SECTION 2017-019I	COUNTY COOK	TOTAL SHEETS 16	SHEET NO. 7
CONTRACT NO. 62F38				
ILLINOIS FED. AID PROJECT				

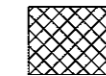
W-BEAM
GUARDRAIL



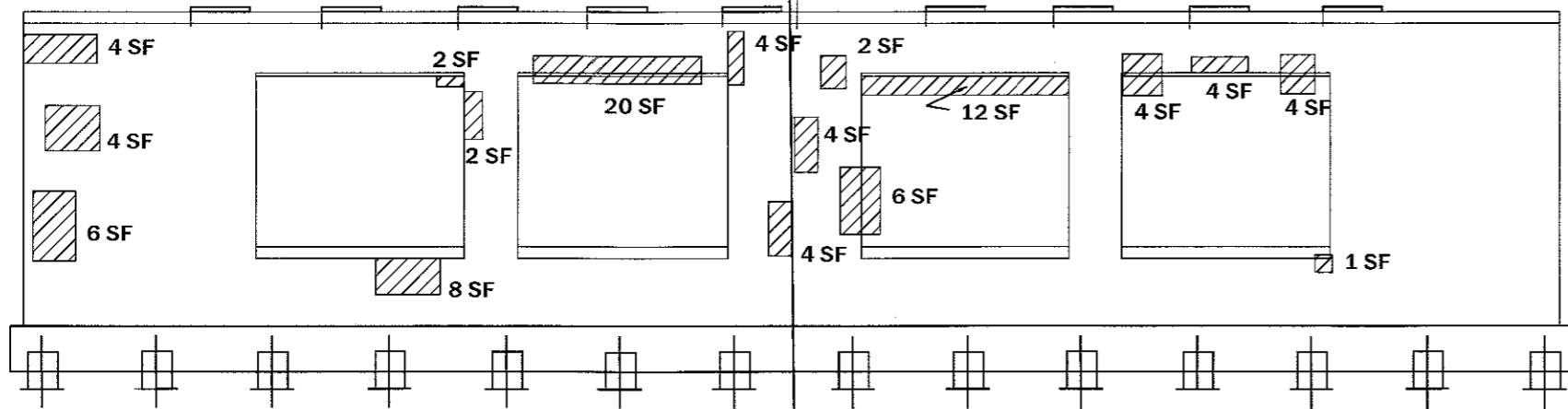
WEST PIER - EAST ELEVATION



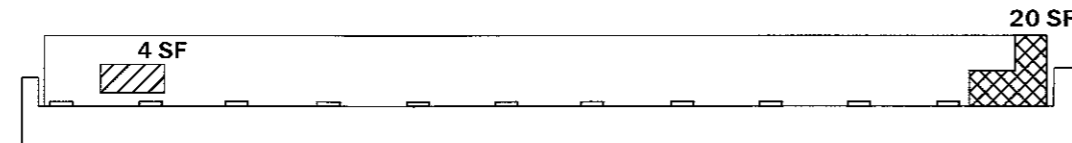
- STRUCTURAL REPAIR OF CONCRETE \leq 5" - 170 SF



- STRUCTURAL REPAIR OF CONCRETE \geq 5" - 20 SF



WEST PIER - WEST ELEVATION



WEST ABUTMENT

REACTIONS SN 016-0826

INTERIOR GIRDER REACTION TABLE					
	W. ABUTMENT	PIER 1	PIER 2	PIER 3	E. ABUTMENT
R DL (k)	20.3	66.9	66.1	66.9	20.3
R LL (k)	31.0	39.3	40.1	39.3	31.0
R IMP (k)	8.7	10.6	10.5	10.6	8.7
R (total) (k)	60.0	116.8	116.7	116.8	60.0

TOTAL BILL OF MATERIAL

ITEM	UNIT	QUANTITY
STRUCTURAL REPAIR OF CONCRETE \leq 5 INCHES	SQ FT	922
STRUCTURAL REPAIR OF CONCRETE \geq 5 INCHES	SQ FT	20
TEMPORARY SHORING	EACH	2

WEST PIER REPAIRS BILL OF MATERIAL (sn 016-0826)

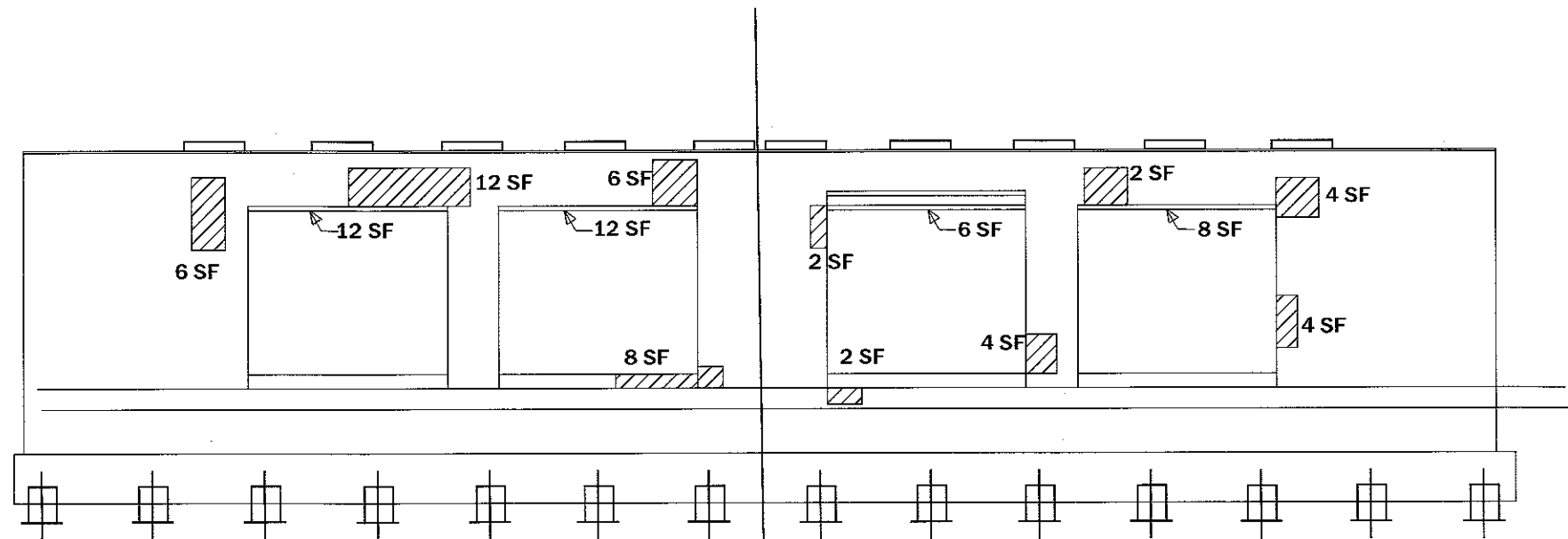
ITEM	UNIT	QUANTITY
STRUCTURAL REPAIR OF CONCRETE \leq 5 INCHES	SQ FT	170
STRUCTURAL REPAIR OF CONCRETE \geq 5 INCHES	SQ FT	20

MODEL: Default
 FILE NAME: P:\11084ED\INTEG\Illinois.gov\PM\DOT\Documents\DOT_offices\District_11\Projects\0128817\CADD\Drawings\128817-91c-plan.dgn

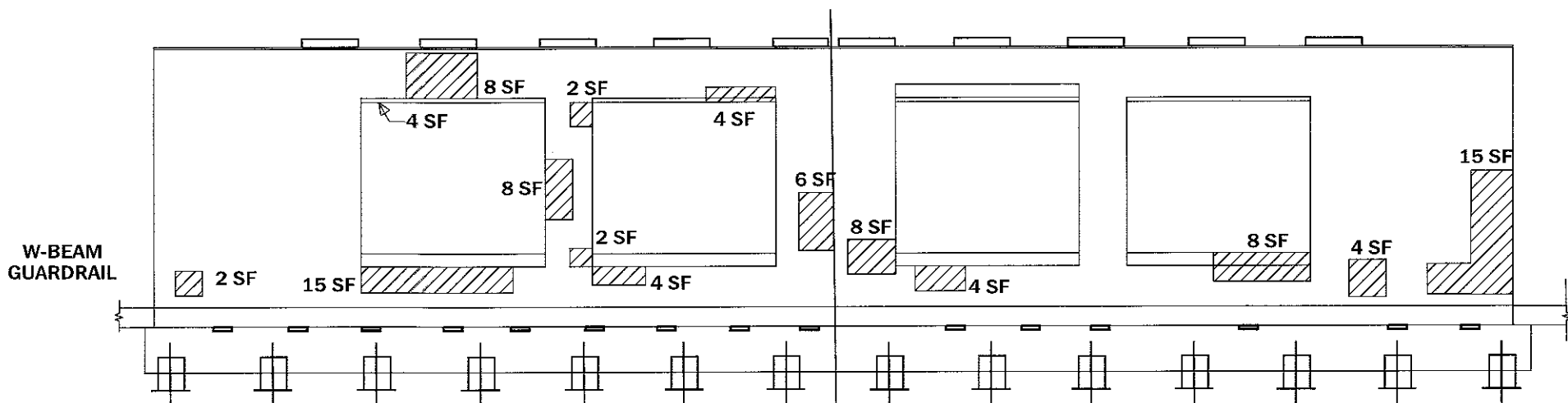
USER NAME = saintvlch	DESIGNED -	REVISED -
PLOT SCALE = 100.0000' / in.	DRAWN -	REVISED -
PLOT DATE = 8/9/2017	CHECKED -	REVISED -
	DATE -	REVISED -

STATE OF ILLINOIS
DEPARTMENT OF TRANSPORTATION

I-94 EDENS EXPWY AT LINCOLN AVE. (SN 016-0826)		F.A.I. RTE.	SECTION	COUNTY	TOTAL SHEETS	SHEET NO.
WEST PIER REPAIRS		94	2017-0191	COOK	16	9
SCALE:	SHEET OF SHEETS	STA.	TO STA.	ILLINOIS FED. AID PROJECT CONTRACT NO. 62F38		

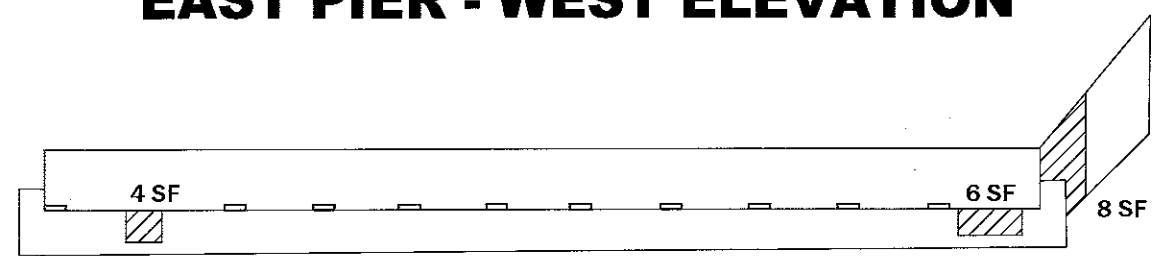


EAST PIER - EAST ELEVATION



EAST PIER - WEST ELEVATION

 - STRUCTURAL REPAIR OF CONCRETE ≤ 5" - 202 SF



EAST ABUTMENT

EAST PIER REPAIRS BILL OF MATERIAL

ITEM	UNIT	QUANTITY
STRUCTURAL REPAIR OF CONCRETE ≤ 5 INCHES	SQ FT	202
STRUCTURAL REPAIR OF CONCRETE ≥ 5 INCHES	SQ FT	

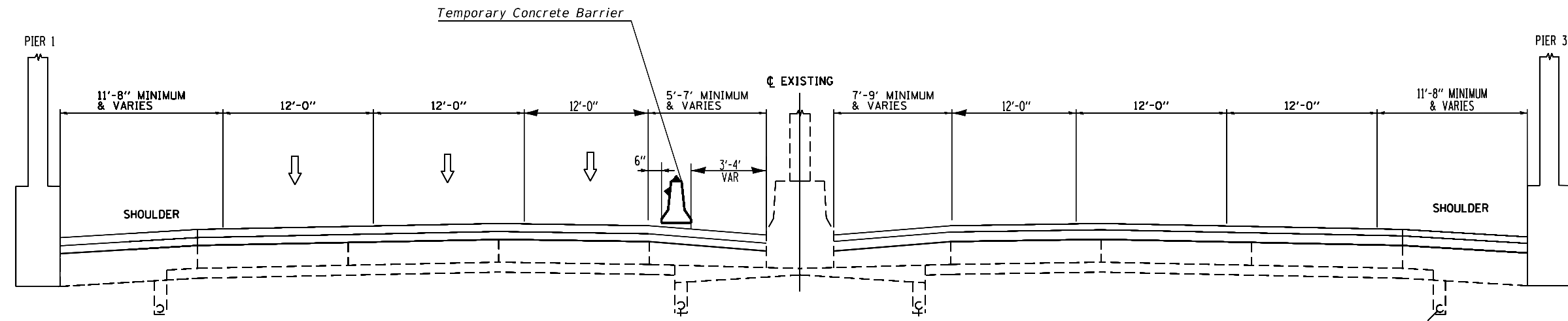
MODEL: Default
 FILE NAME: p:\w\0848ED\INTG\Illinois.ppt\WIDOT\Documents\DOT_Offices\Beverly_I\Projects\123817\CAD\Drawings\123817-111-01.dgn

USER NAME = saintvlch	DESIGNED -	REVISED -
	DRAWN -	REVISED -
PLOT SCALE = 100.0000' / in.	CHECKED -	REVISED -
PLOT DATE = 8/23/2017	DATE -	REVISED -

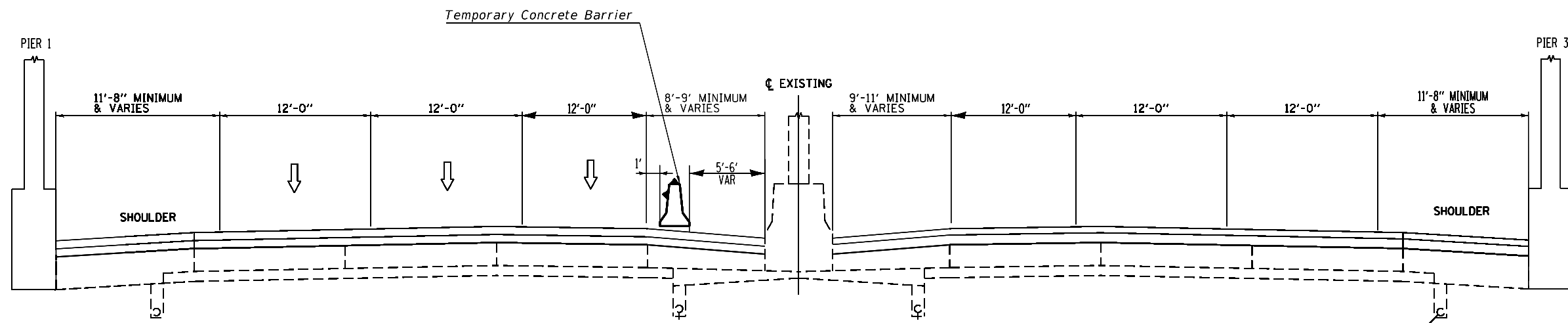
**STATE OF ILLINOIS
DEPARTMENT OF TRANSPORTATION**

**I-94 EDENS EXPWY AT LINCOLN AVE. (SN 016-0826)
EAST PIER REPAIRS**

F.A.J. RTE. 94	SECTION 2017-0191	COUNTY COOK	TOTAL SHEETS 16	SHEET NO. 11
SCALE: SHEET OF SHEETS STA. TO STA.			CONTRACT NO. 62F38	
ILLINOIS FED. AID PROJECT				



SECTION
I-94 AT GLENVIEW ROAD



SECTION
I-94 AT LINCOLN AVENUE

MODEL: Default
FILE NAME: P:\110848\BID\ITEG\Illinois\gov\PIV\DOT\Documents\1\Projects\1288\17\CADD\Bids\Design\128817_sht-plan.dgn

USER NAME = saintvlch	DESIGNED -	REVISED -
	DRAWN -	REVISED -
PLOT SCALE = 100.0000' / in.	CHECKED -	REVISED -
PLOT DATE = 8/9/2017	DATE -	REVISED -




STATE OF ILLINOIS
DEPARTMENT OF TRANSPORTATION

EXISTING STAGING TYPICAL SECTIONS
AT GLENVIEW RD. AND LINCOLN AVE.

SCALE: SHEET OF SHEETS STA. TO STA.

F.A.I. RTE.	SECTION	COUNTY	TOTAL SHEETS	SHEET NO.
94	2017-019I	COOK	16	12
CONTRACT NO. 62F38				
ILLINOIS FED. AID PROJECT				

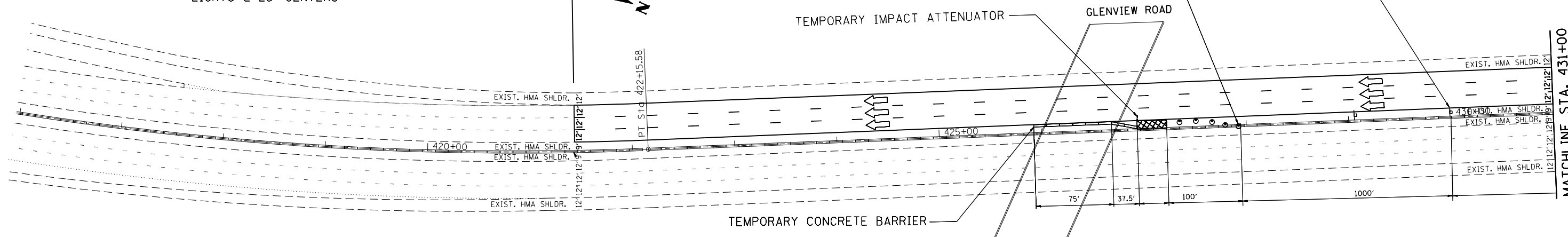
LEGEND

-  IMPACT ATTENUATORS, TEMPORARY (NON-REDIRECTIVE), TEST LEVEL 3
-  TEMPORARY CONCRETE BARRIER
-  DRUMS WITH MONO DIRECTIONAL LIGHTS @ 25' CENTERS

**PROJECT BEGINS
STA. 421 + 43.9**

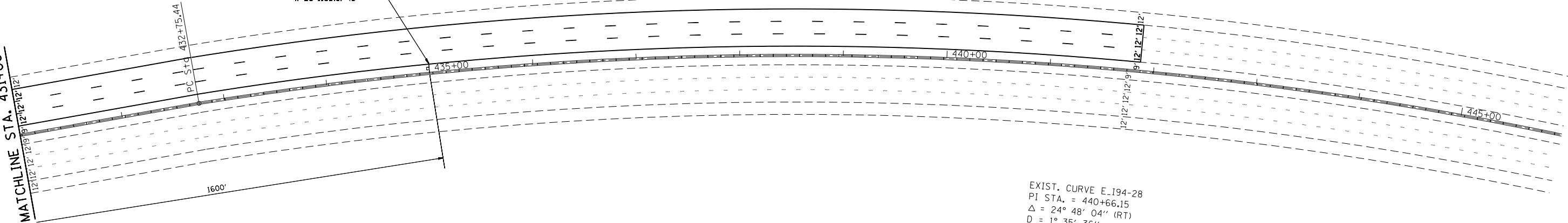
I-94
(EDENS EXPRESSWAY)

DRUMS AT 25' (8m) CENTERS



I-94
(EDENS EXPRESSWAY)

MATCHLINE STA. 431+00



EXIST. CURVE E-194-28
 PI STA. = 440+66.15
 $\Delta = 24^\circ 48' 04''$ (RT)
 $D = 1^\circ 35' 36''$
 $R = 3,596.18'$
 $T = 790.71'$
 $L = 1,556.65'$
 $E = 85.90'$
 $e = \text{-----}$
 $T.R. = \text{-----}$
 $S.E. \text{ RUN} = \text{-----}$
 $P.C. \text{ STA.} = 432+75.44$
 $P.T. \text{ STA.} = 448+32.09$

MODEL: Default
 FILE NAME: p:\u0008\EBID\NTEC\Illinois.gov\PIV\DOT\Documents\DOT_Offices\District 1\Projects\28817\CAD\Drawings\28817-shr-plan.dgn

USER NAME = saintvich	DESIGNED -	REVISED -
	DRAWN -	REVISED -
PLOT SCALE = 100.0000' / in.	CHECKED -	REVISED -
PLOT DATE = 8/28/2017	DATE -	REVISED -




**STATE OF ILLINOIS
DEPARTMENT OF TRANSPORTATION**

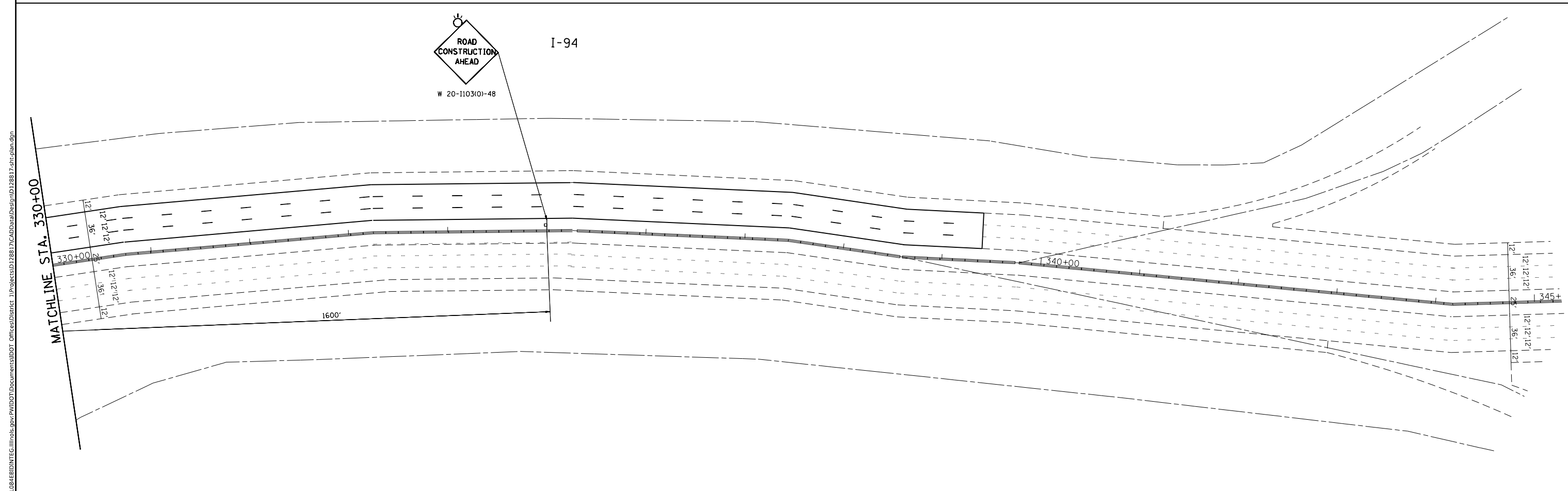
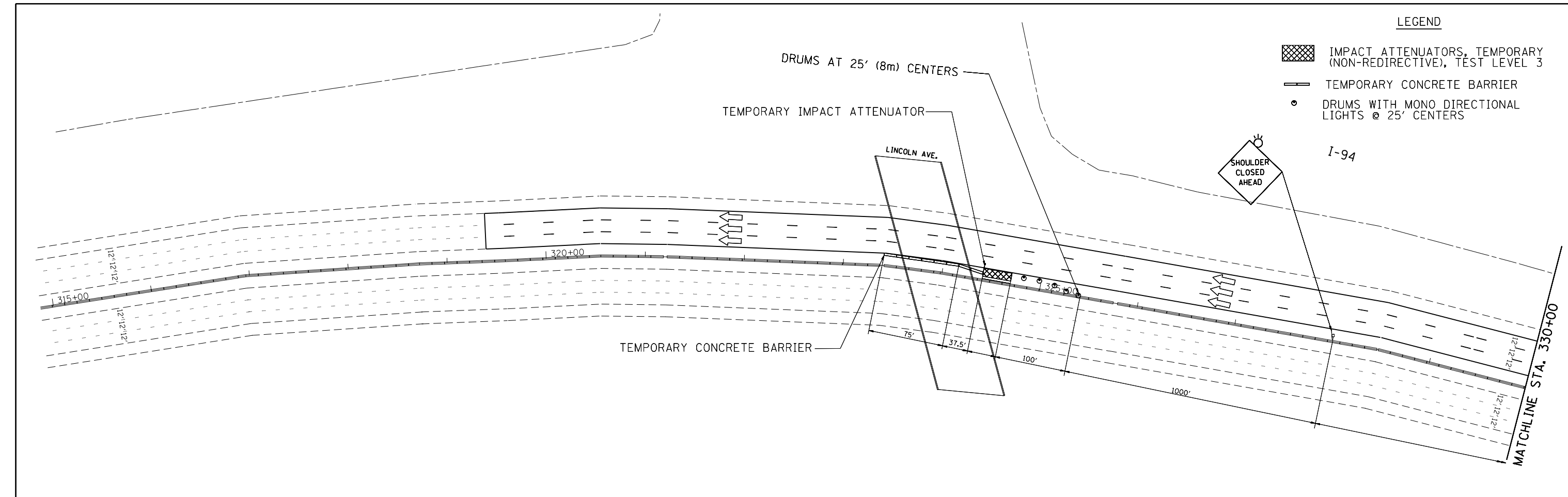
**ROADWAY PLAN I-94 (EDENS EXPY.)
AT GLENVIEW RD**

SCALE: 1"=50' SHEET OF SHEETS STA. 421+43.9 TO STA. 441+85.5

F.A.I. RTE.	SECTION	COUNTY	TOTAL SHEETS	SHEET NO.
94	2017-019I	COOK	16	13
CONTRACT NO. 62F38				
ILLINOIS FED. AID PROJECT				

LEGEND

-  IMPACT ATTENUATORS, TEMPORARY (NON-REDIRECTIVE), TEST LEVEL 3
-  TEMPORARY CONCRETE BARRIER
-  DRUMS WITH MONO DIRECTIONAL LIGHTS @ 25' CENTERS



MODEL: Default
 FILE NAME: P:\1103\B&E\BID\ITEC\Illinois\gov\PIW\DOT\Documents\1\DOT\Office\1\Projects\128817\CADD\B&E\Design\128817-shr-plan.dgn

USER NAME = saintvlch	DESIGNED -	REVISED -
	DRAWN -	REVISED -
PLOT SCALE = 100.0000' / in.	CHECKED -	REVISED -
PLOT DATE = 8/28/2017	DATE -	REVISED -

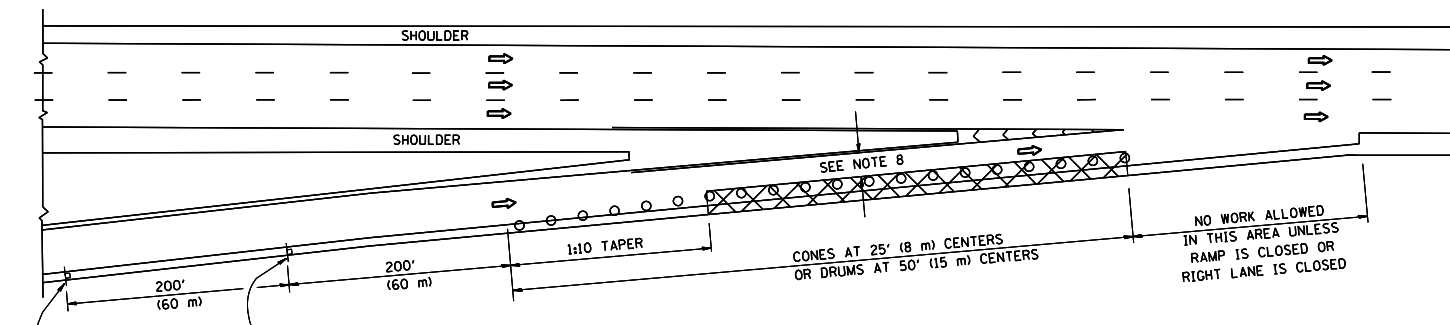
STATE OF ILLINOIS
DEPARTMENT OF TRANSPORTATION

ROADWAY PLAN I-94 (EDENS EXPY.)
AT LINCOLN AVE

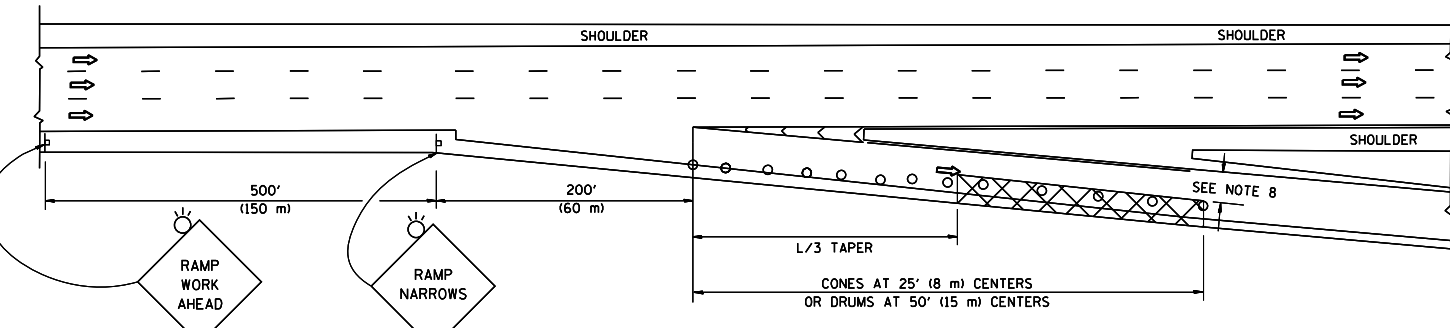
SCALE: 1"=50' SHEET OF SHEETS STA. 421+43.9 TO STA. 441+85.5

F.A.I. RTE.	SECTION	COUNTY	TOTAL SHEETS	SHEET NO.
94	2017-019I	COOK	16	14
CONTRACT NO. 62F38				
ILLINOIS FED. AID PROJECT				

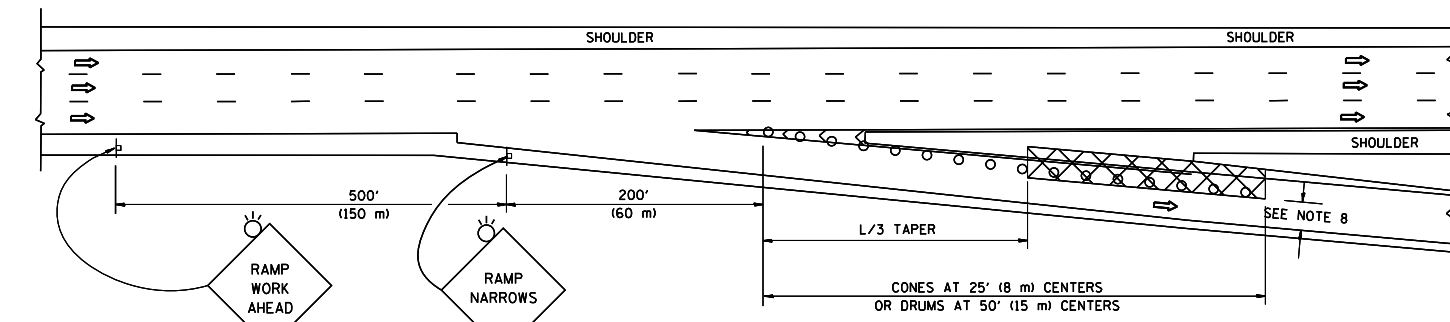
PARTIAL RAMP CLOSURE DETAILS



TYPICAL ENTRANCE RAMP



TYPICAL EXIT RAMP



TYPICAL EXIT RAMP

SYMBOLS

- ACTIVE WORK AREA
- SIGN ON PORTABLE OR PERMANENT SUPPORT
- FLAGGER WITH CONTROL SIGN
- TYPE II BARRICADE OR DRUM WITH STEADY BURN MONO-DIRECTIONAL LIGHT
- CONE, DRUM OR BARRICADE
- IMPACT ATTENUATOR OF TYPE AND TEST LEVEL SPECIFIED

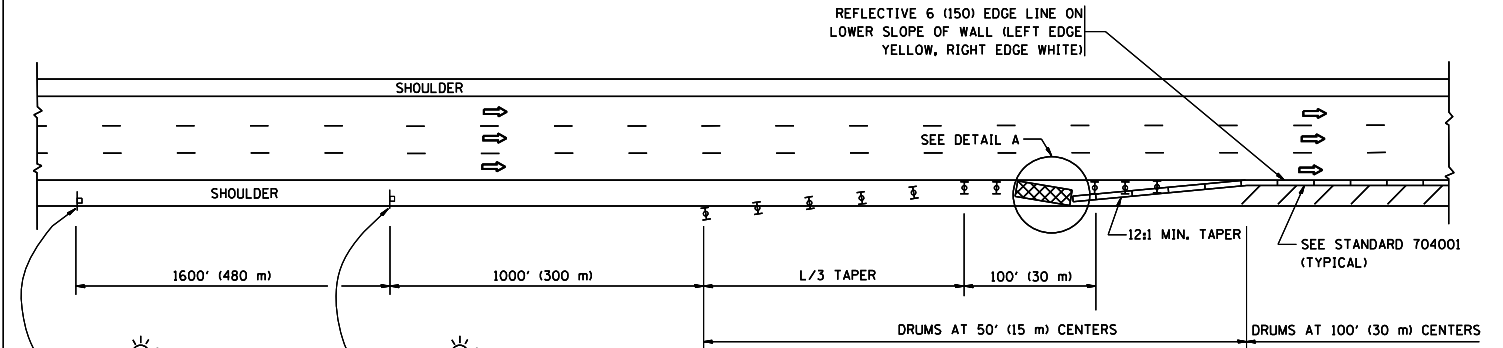
GENERAL NOTES

1. THE "L" DISTANCE EQUALS:

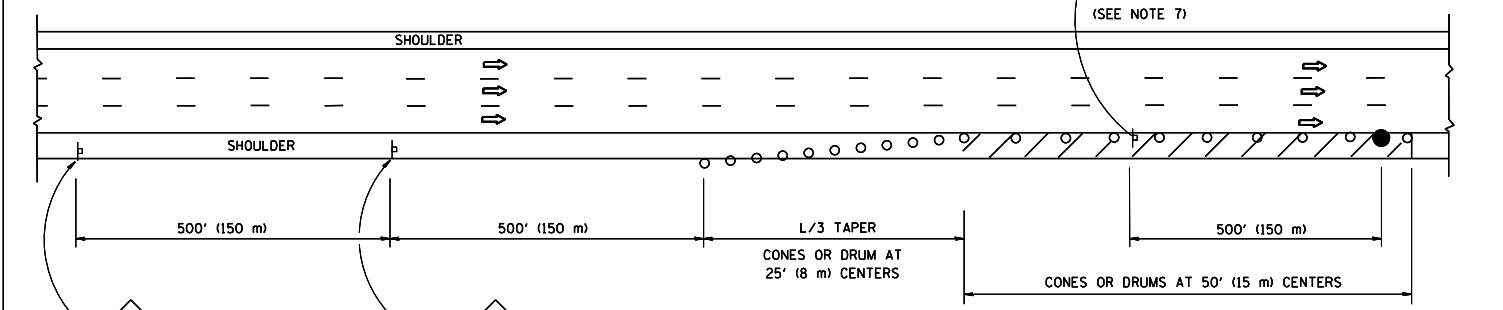
SPEED LIMIT	FORMULAS
45 mph (80 km/h) OR GREATER:	METRIC ENGLISH
	$L=0.65(W)(S)$ $L=(W)(S)$

W = WIDTH OF OFFSET IN FEET (METERS)
 S = NORMAL POSTED SPEED MPH (KM/H)
2. PLASTIC DRUMS WITH HIGH PERFORMANCE REFLECTIVE SHEETING AND STEADY BURNING LIGHTS ARE REQUIRED FOR ALL NIGHTTIME CLOSURES.
3. ALL SIGNS SHALL BE POST MOUNTED IF THE CLOSURE TIME EXCEEDS FOUR DAYS.
4. FLASHING LIGHTS SHALL BE USED DURING THE HOURS OF DARKNESS AND SHALL BE INSTALLED ABOVE THE FIRST TWO SETS OF SIGNS.

SHOULDER CLOSURE DETAILS

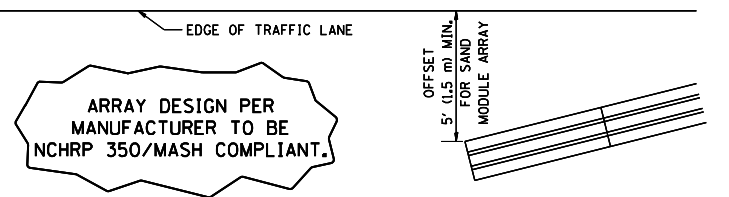


PERMANENT SHOULDER CLOSURE



DAYTIME SHOULDER CLOSURE

THIS DETAIL IS USED WHERE:
 1. VEHICLES, EQUIPMENT, WORKERS OR THEIR ACTIVITIES ENCR OACH IN AN AREA CLOSER THAN 15' (4.5 m) TO THE EDGE OF PAVEMENT FOR A PERIOD IN EXCESS OF 15 MINUTES.



DETAIL "A"
 IMPACT ATTENUATOR, TEMPORARY
 (SEE NOTE 5)

5. THE IMPACT ATTENUATOR, TEMPORARY IS NOT REQUIRED WHEN THE TEMPORARY CONCRETE BARRIER WALL IS PROTECTED BY OR IS TIED INTO THE EXISTING GUARDRAIL. IF OFFSET IS LESS THAN 5 FEET USE NARROW USE TYPE DEVICE TO MEET NCHRP350/MASH.
6. AUTHORIZATION FROM THE DISTRICT'S BUREAU OF TRAFFIC IS REQUIRED FOR ALL FREEWAY CLOSURES.
7. THE FLAGGER AND FLAGGER SIGN ARE REQUIRED AT THE ABOVE WORK SITES WHEN:
 - a. FOUR OR MORE WORK VEHICLES ENTER THE TRAFFIC LANES IN A ONE HOUR PERIOD.
 - b. THE WORK ACTIVITY REQUIRES FREQUENT ENCR OACHMENT INTO THE LANE OPEN TO TRAFFIC.
 THE FLAGGER SHALL BE STATIONED APPROXIMATELY 100' (30 m) TO 200' (60 m) IN ADVANCE OF THE WORKERS.
8. 12' MIN. WIDTH TANGENT SECTION
 16' MIN. WIDTH CURVE SECTION.

ALL DIMENSIONS ARE IN INCHES (MILLIMETERS) UNLESS OTHERWISE SHOWN.

FILE NAME =	USER NAME = saintwich	DESIGNED -	REVISED - -	STATE OF ILLINOIS DEPARTMENT OF TRANSPORTATION	SCALE: NONE	SHEET NO. 1 OF 1 SHEETS	STA. TO STA.	F.A.I. RTE.	SECTION	COUNTY	TOTAL SHEETS	SHEET NO.
pw\11084EBIDINTEG\illinois.gov\PI\DOT\Documents\DOT Offices\District 1\Projects\DI2881\Design\DI28817-sht-plen.dgn	PLOT SCALE = 100.0000' / 1in.	CHECKED -	REVISED - -					94	2017-019I	COOK	16	15
PLOT DATE = 8/3/2017	DATE - -	REVISED - M.D. 06-13						CONTRACT NO. 62F38				
								FED. ROAD DIST. NO. 1 ILLINOIS FED. AID PROJECT				

