

11-17-2023 LETTING ITEM 001

INDEX OF SHEETS:

1. COVER SHEET
2. GENERAL NOTES
3. SUMMARY OF QUANTITIES
4. RAISED REFLECTIVE PAVEMENT MARKER REPLACEMENT LOCATIONS
5. DISTRICT 1 - LAKE COUNTY
6. DISTRICT 1 - COOK COUNTY
7. DISTRICT 1 - DUPAGE COUNTY
8. DISTRICT 1 - WILL COUNTY

STATE STANDARDS

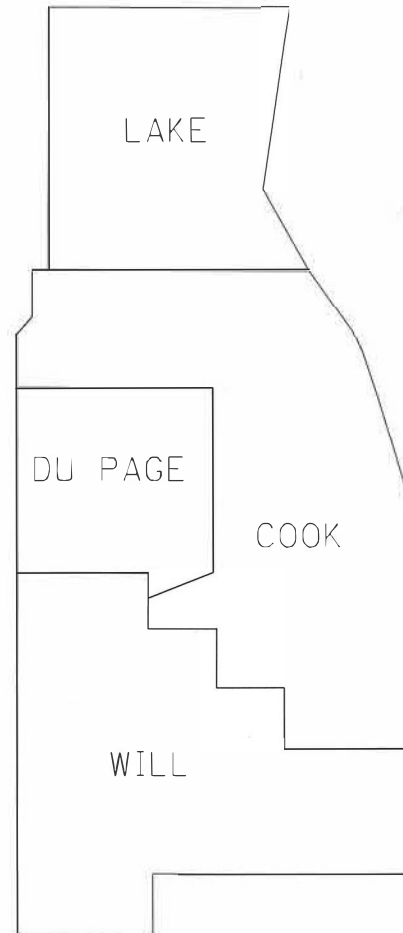
- | | |
|-----------|---|
| 701400-11 | APPROACH TO LANE CLOSURE, FREEWAY/EXPRESSWAY |
| 701401-13 | LANE CLOSURE, FREEWAY/EXPRESSWAY |
| 701428-01 | TRAFFIC CONTROL SETUP AND REMOVAL FREEWAY/EXPRESSWAY |
| 701411-09 | LANE CLOSURE, MULTILANE, AT ENTRANCE OR EXIT RAMP, FOR SPEEDS ≥ 45MPH |
| 701446-11 | TWO LANE CLOSURE, FREEWAY/EXPRESSWAY |
| 701901-08 | TRAFFIC CONTROL DEVICES |

**STATE OF ILLINOIS
DEPARTMENT OF TRANSPORTATION**

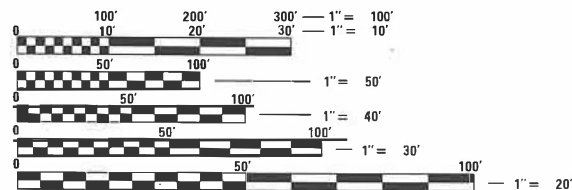
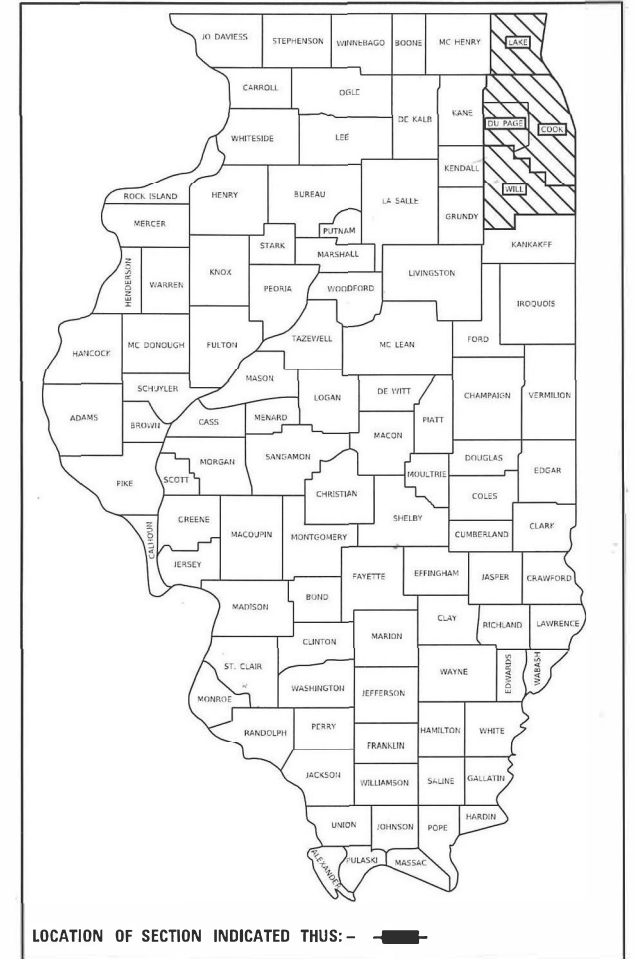
PROPOSED HIGHWAY PLANS

VARIOUS INTERSTATES ROUTES SECTION D1 REFLECTOR REPL 23-16 RAISED REFLECTOR REPLACEMENT VARIOUS COUNTIES

M-60-016-23



F.A. RTE.	SECTION	COUNTY	TOTAL SHEETS	SHEET NO.
	D1 REFLECTOR REPL 23-16	VARIOUS	8	1
ILLINOIS			CONTRACT NO. 46606	



FULL SIZE PLANS HAVE BEEN PREPARED USING STANDARD ENGINEERING SCALES. REDUCED SIZED PLANS WILL NOT CONFORM TO STANDARD SCALES. IN MAKING MEASUREMENTS ON REDUCED PLANS, THE ABOVE SCALES MAY BE USED.

J.U.L.I.E.
JOINT UTILITY LOCATION INFORMATION FOR EXCAVATION
1-800-892-0123
OR 811

CONTRACT NO. 46606

STATE OF ILLINOIS
DEPARTMENT OF TRANSPORTATION

SUBMITTED MARCH 10, 2023

John Paul L. Ours
REGIONAL ENGINEER

October 13, 2023

Scott A. Etk
ENGINEER OF DESIGN AND ENVIRONMENT

October 13, 2023

Stephen M. Smith
DIRECTOR OF HIGHWAYS PROJECT IMPLEMENTATION

**PRINTED BY THE AUTHORITY
OF THE STATE OF ILLINOIS**

GENERAL NOTES

The Department may remove and not install markers in certain locations at the engineer's discretion.

The Department may install markers in certain locations that did previously have markers at the engineer's discretion

The locations of the repairs areas shall be determined by the engineer.

No material should be left on or near the roadway.

Removal of damaged materials will include loading, hauling and disposal.

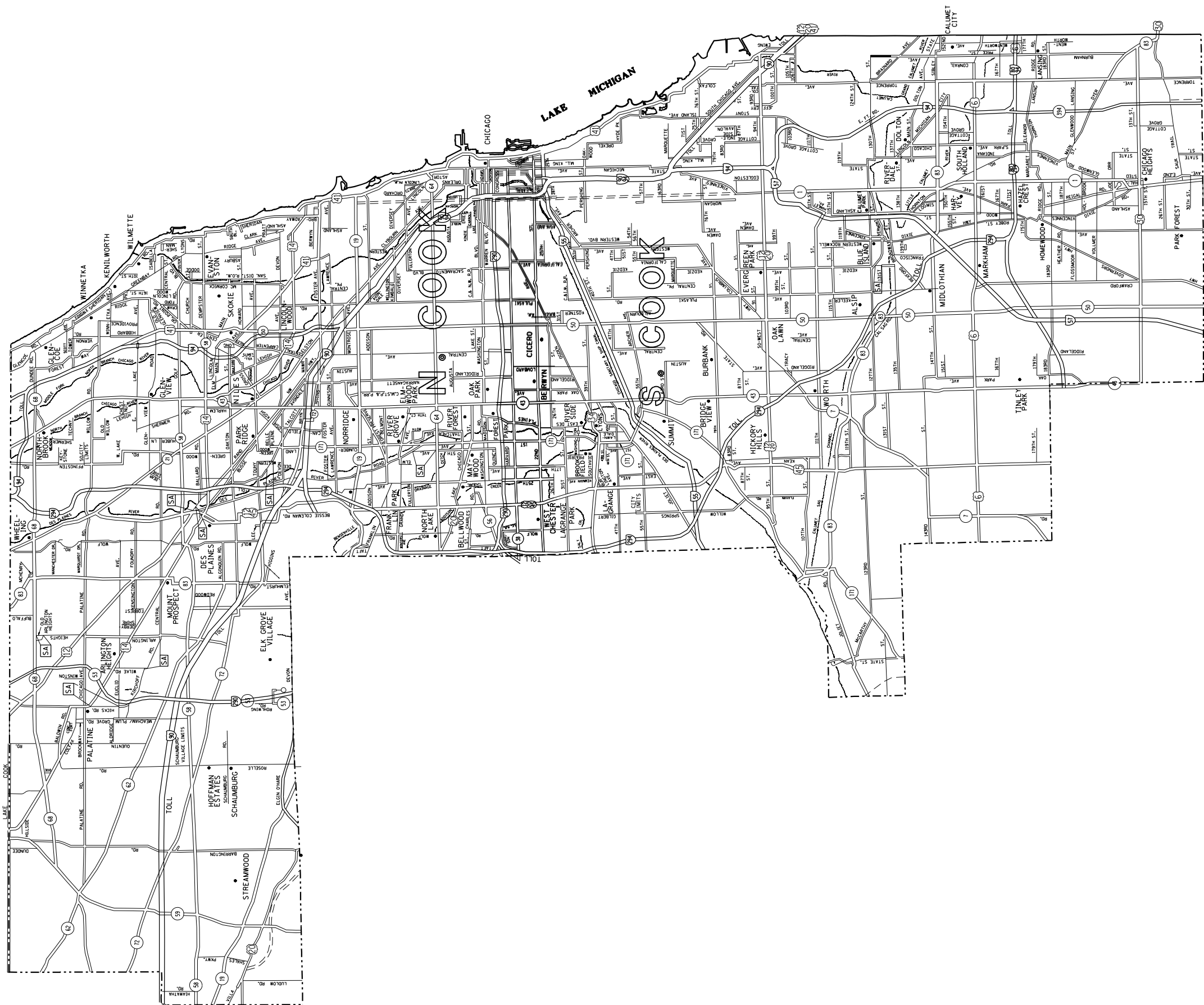
MODEL: Default
FILE NAME: S:\338\Contracts\CAD\CoverSheets for Contracts.dgn

USER NAME = David.Gonzalez2 PLOT SCALE = 102.7569 ' / in. PLOT DATE = 3/6/2023	DESIGNED - DRAWN - CHECKED - DATE -	REVISED - REVISED - REVISED - REVISED -	STATE OF ILLINOIS DEPARTMENT OF TRANSPORTATION	GENERAL NOTES	<table border="1" style="width: 100%; border-collapse: collapse;"> <tr> <th style="width: 10%;">F.A. RTE.</th> <th style="width: 40%;">SECTION</th> <th style="width: 15%;">COUNTY</th> <th style="width: 10%;">TOTAL SHEETS</th> <th style="width: 15%;">SHEET NO.</th> </tr> <tr> <td></td> <td>D 1 REFLECTOR REPL 23-16</td> <td>VARIOUS</td> <td>8</td> <td>2</td> </tr> <tr> <td colspan="5" style="text-align: right;">CONTRACT NO. 46606</td> </tr> </table>	F.A. RTE.	SECTION	COUNTY	TOTAL SHEETS	SHEET NO.		D 1 REFLECTOR REPL 23-16	VARIOUS	8	2	CONTRACT NO. 46606				
F.A. RTE.	SECTION	COUNTY	TOTAL SHEETS	SHEET NO.																
	D 1 REFLECTOR REPL 23-16	VARIOUS	8	2																
CONTRACT NO. 46606																				
SCALE: SHEET 2 OF 8 SHEETS STA.				TO STA.	ILLINOIS FED. AID PROJECT															

CODE NO.	ITEM	UNIT	100% STATE URBAN 0021 QUANTITY
78100100	RAISED REFLECTIVE PAVEMENT MARKER	EACH	16,000
78100300	REPLACEMENT REFLECTOR	EACH	52,000
78300200	RAISED REFLECTIVE PAVEMENT MARKER REMOVAL	EACH	16,000
X7011015	TRAFFIC CONTROL AND PROTECTION EXPRESSWAYS	L SUM	1

MODEL: Default
 FILE NAME: S:\Contracts\CAD\CoverSheets for Contracts.dgn

USER NAME = David.Gonzalez2	DESIGNED -	REVISED -	STATE OF ILLINOIS DEPARTMENT OF TRANSPORTATION	SUMMARY OF QUANTITIES			F.A. RTE.	SECTION	COUNTY	TOTAL SHEETS	SHEET NO.
PLOT SCALE = 102,9343 ' / in.	DRAWN -	REVISED -					D 1 REFLECTOR REPL 23-16	VARIOUS	8	3	
CHECKED -	REVISED -			SCALE: SHEET 3 OF 8 SHEETS STA. TO STA.			CONTRACT NO. 46606				
PLOT DATE = 8/23/2023	DATE -	REVISED -					ILLINOIS FED. AID PROJECT				



MODEL: D:\civ\it
 FILE NAME: S:\SI\Contracts\CAD\CoverSheets for Contracts.dgn

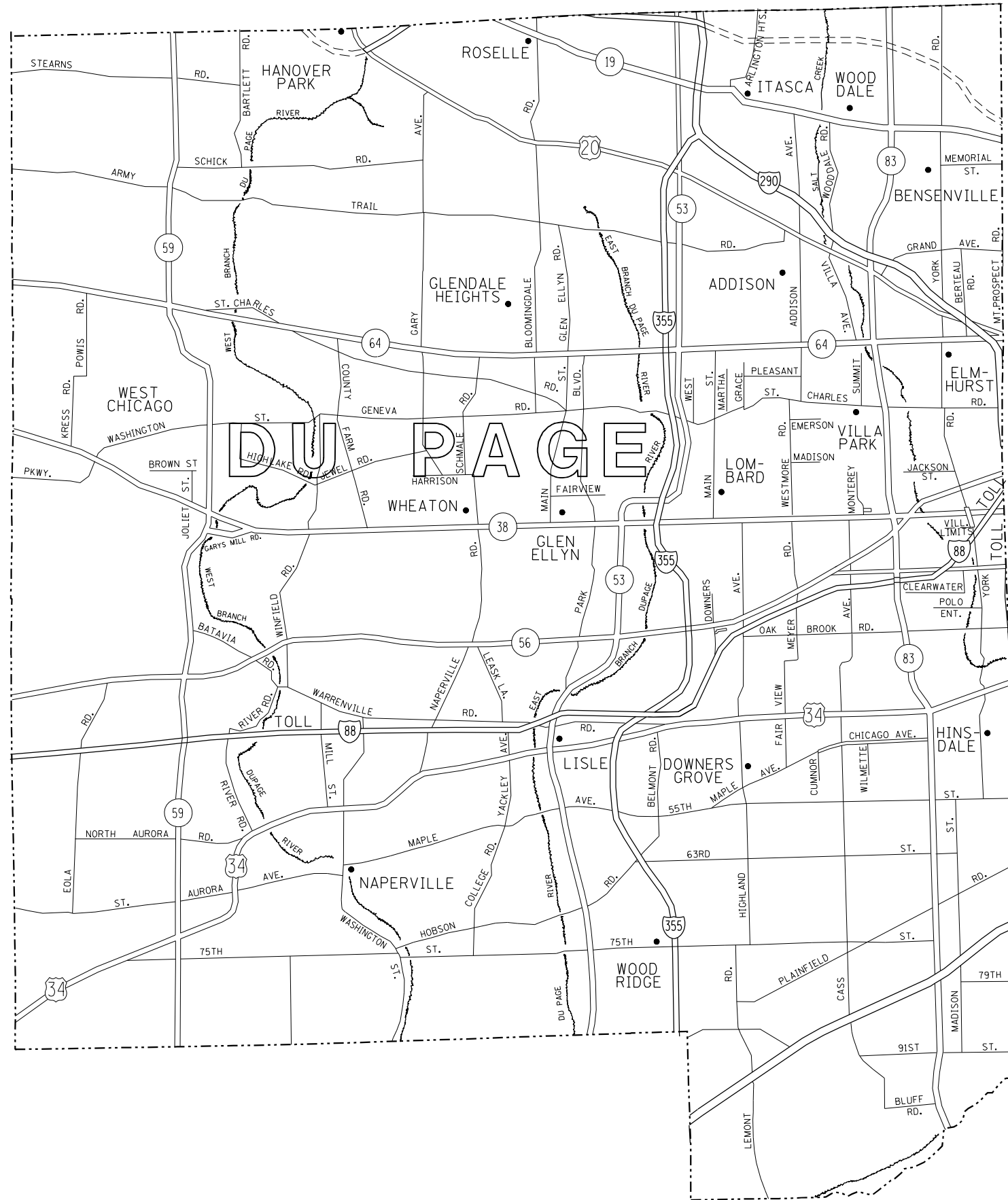
USER NAME = David.Gonzalez	DESIGNED -	REVISED -
PLOT SCALE = 101.4881' / in.	DRAWN -	REVISED -
PLOT DATE = 3/6/2023	CHECKED -	REVISED -
	DATE -	REVISED -

**STATE OF ILLINOIS
 DEPARTMENT OF TRANSPORTATION**

DISTRICT 1 - COOK COUNTY

SCALE: SHEET 6 OF 8 SHEETS STA. TO STA.

F.A. RTE.	SECTION	COUNTY	TOTAL SHEETS	SHEET NO.
	D 1 REFLECTOR REPL 23-16	VARIOUS	8	6
CONTRACT NO. 46606				
ILLINOIS FED. AID PROJECT				



MODEL: Default
 FILE NAME: S:\55\CONTRACTS\CAD\CoverSheets for Contracts.dgn

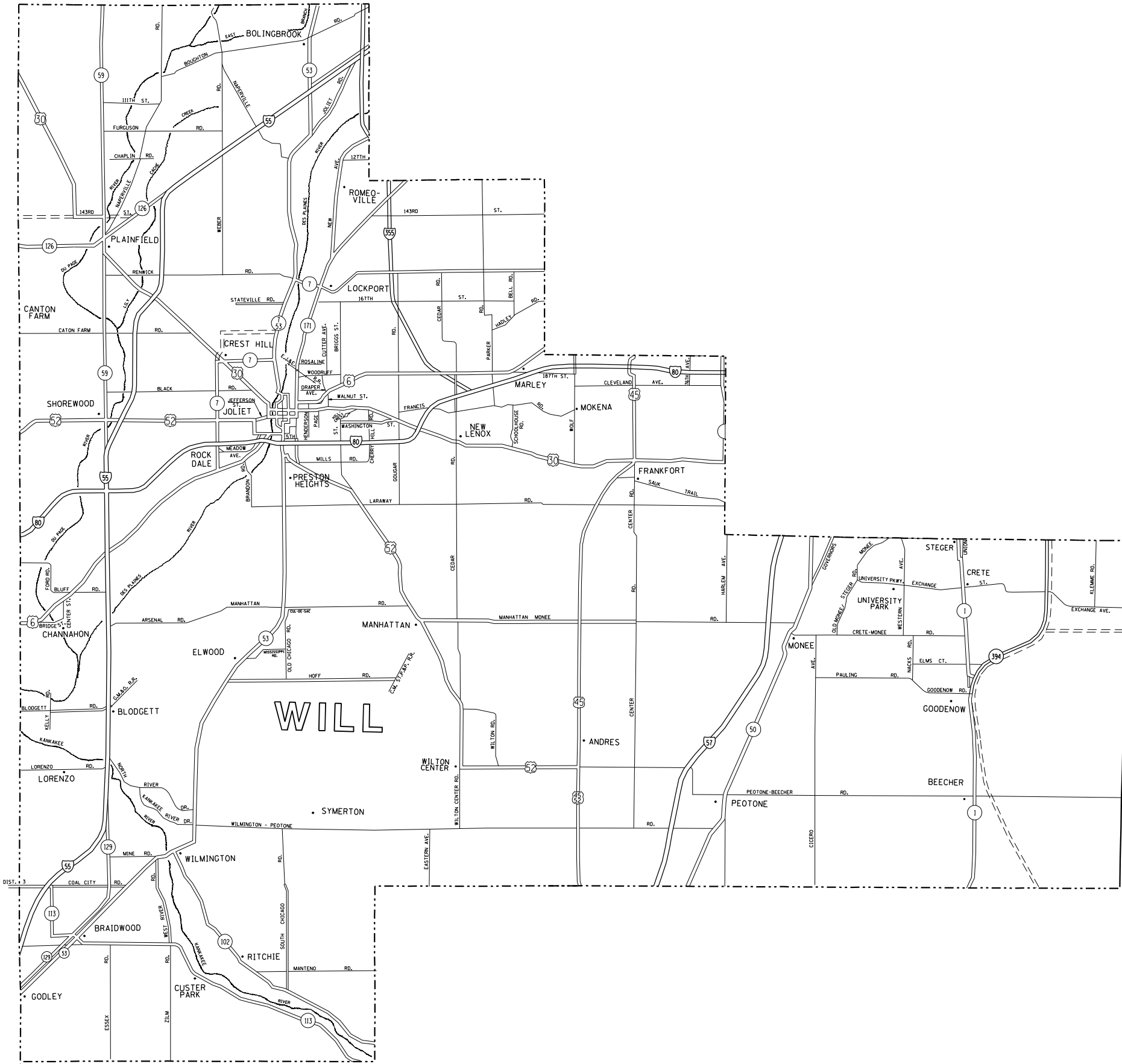
USER NAME = David.Gonzalez2	DESIGNED -	REVISED -
PLOT SCALE = 102.5132' / in.	DRAWN -	REVISED -
PLOT DATE = 3/6/2023	CHECKED -	REVISED -
	DATE -	REVISED -

**STATE OF ILLINOIS
 DEPARTMENT OF TRANSPORTATION**

DISTRICT 1 - DUPAGE COUNTY

SCALE: SHEET 7 OF 8 SHEETS STA. TO STA.

F.A. RTE.	SECTION	COUNTY	TOTAL SHEETS	SHEET NO.
	D J REFLECTOR REPL 23-16	VARIOUS	8	7
CONTRACT NO. 46606				
ILLINOIS FED. AID PROJECT				



MODEL: Defaul.r
 FILE NAME: S:\S\Contract\CAD\CoverSheets for Contracts.dwg

USER NAME = David.Gonzalez2	DESIGNED -	REVISED -
PLOT SCALE = 102.3668' / in.	DRAWN -	REVISED -
PLOT DATE = 3/6/2023	CHECKED -	REVISED -
	DATE -	REVISED -

STATE OF ILLINOIS
DEPARTMENT OF TRANSPORTATION

DISTRICT 1 - WILL COUNTY	
SCALE:	SHEET 8 OF 8 SHEETS STA. TO STA.

F.A. RTE.	SECTION	COUNTY	TOTAL SHEETS	SHEET NO.
	D 1 REFLECTOR REPL 23-16	VARIOUS	8	8
CONTRACT NO. 46606				
ILLINOIS FED. AID PROJECT				