

STATE OF ILLINOIS  
DEPARTMENT OF TRANSPORTATION

FAU RTE.	SECTION	COUNTY	TOTAL SHEETS	SHEET NO.
3510	2018-121-RS	WILL	14	1
		ILLINOIS	CONTRACT NO. 62H63	

FOR INDEX OF SHEETS, SEE SHEET NO. 2

THIS PROJECT IS LOCATED IN  
THE VILLAGE OF BOLINGBROOK

TRAFFIC DATA:

EAST FRONTAGE RD:

ADT NOT LISTED  
SPEED LIMIT = 45 MPH

PROPOSED  
HIGHWAY PLANS

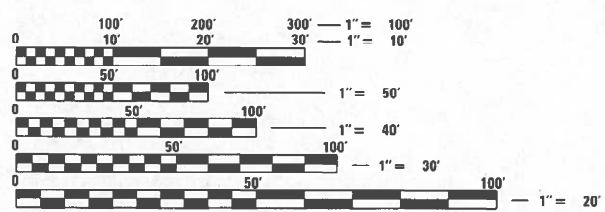
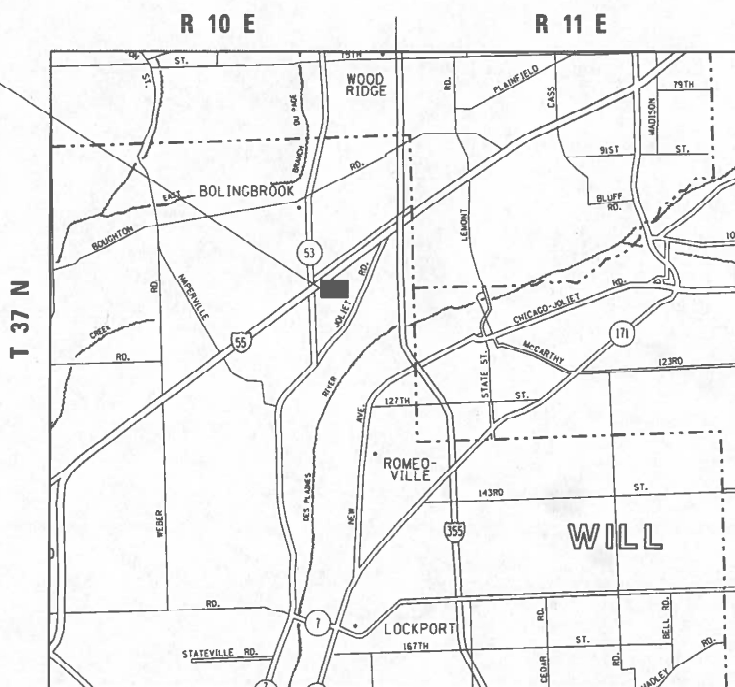
FAU ROUTE 3510: EAST FRONTAGE ROAD  
I-55 MAINTENANCE YARD  
151 E. SOUTH FRONTAGE RD, BOLINGBROOK  
SECTION: 2018-121-RS  
PARKING IMPROVEMENT  
WILL COUNTY

C-91-273-19

D-91-079-19



IMPROVEMENT  
LOCATION



FULL SIZE PLANS HAVE BEEN PREPARED USING STANDARD ENGINEERING SCALES. REDUCED SIZED PLANS WILL NOT CONFORM TO STANDARD SCALES. IN MAKING MEASUREMENTS ON REDUCED PLANS, THE ABOVE SCALES MAY BE USED.

J.U.L.I.E.  
JOINT UTILITY LOCATION INFORMATION FOR EXCAVATORS  
1-800-892-0123  
OR 811

PROJECT ENGINEER: VESELIN VELICHKOV (847) 705-4432  
PROJECT MANAGER: FAWAD AQUEEL (847) 705-4247

GROSS & NET LENGTH = N/A (SPOT IMPROVEMENT)

CONTRACT NO. 62H63

STATE OF ILLINOIS  
DEPARTMENT OF TRANSPORTATION

SUBMITTED August 28, 2023  
[Signature] REGIONAL ENGINEER  
October 13, 2023  
[Signature] ENGINEER OF DESIGN AND ENVIRONMENT  
October 13, 2023  
[Signature] DIRECTOR OF HIGHWAYS PROJECT IMPLEMENTATION

PRINTED BY THE AUTHORITY  
OF THE STATE OF ILLINOIS

**INDEX OF SHEETS**

**STATE STANDARDS**

**GENERAL NOTES**

SHEET NO.	DESCRIPTION	STANDARD NO.	DESCRIPTION
1	COVER SHEET	000001-08	STANDARD SYMBOLS, ABBREVIATIONS AND PATTERNS
2-3	INDEX OF SHEETS, STATE STANDARDS & GENERAL NOTES	280001-07	TEMPORARY EROSION CONTROL SYSTEMS
4-5	SUMMARY OF QUANTITIES	604001-05	FRAME AND LIDS TYPE 1
6	TYPICAL SECTIONS	606001-08	CONCRETE CURB TYPE B AND COMBINATION CONCRETE CURB AND GUTTER
7	EXISTING SITE PLAN	664001-02	CHAIN LINK FENCE
8	PROPOSED SITE GRADING PLAN	701001-02	OFF-RD OPERATIONS, 2L, 2W, MORE THAN 15' (4.5 m) AWAY
9	LANDSCAPING, EROSION AND SEDIMENT CONTROL PLAN	701006-05	OFF-RD OPERATIONS, 2L, 2W, 15' (4.5 m) TO 24" (600 mm) FROM PAVEMENT EDGE
10	PAVEMENT MARKING AND SIGNING PLAN	701301-04	LANE CLOSURE, 2L, 2W SHORT TIME OPERATIONS
11	BD-01: DRIVEWAY DETAILS - DISTANCE BETWEEN R.O.W. AND FACE OF CURB AND EDGE OF SHOULDER GREATER THAN OR EQUAL TO 15' (4.5 M)	701501-06	URBAN LANE CLOSURE, 2L, 2W, UNDIVIDED
12	BD-24: CURB OR CURB AND GUTTER REMOVAL AND REPLACEMENT	701901-08	TRAFFIC CONTROL DEVICES
13	TC-10: TRAFFIC CONTROL AND PROTECTION FOR SIDE ROADS, INTERSECTIONS AND DRIVEWAYS	720001-01	SIGN PANEL MOUNTING DETAILS
14	TC-22: ARTERIAL ROAD INFORMATION SIGN	720006-04	SIGN PANEL ERECTION DETAILS
		720011-01	METAL POSTS FOR SIGNS, MARKERS & DELINEATORS
		729001-01	APPLICATIONS OF TYPES A & B METAL POSTS (FOR SIGNS & MARKERS)

- BEFORE STARTING ANY EXCAVATION, THE CONTRACTOR SHALL CALL "JULIE" AT (800) 892-0123 OR 811 FOR FIELD LOCATIONS OF BURIED ELECTRIC, TELEPHONE, AND GAS FACILITIES. (48 HOUR NOTIFICATION REQUIRED)
- ANY DAMAGE TO EXISTING PAVEMENT MARKINGS OR RAISED REFLECTIVE PAVEMENT MARKERS OUTSIDE THE REMOVAL LINE SHOWN ON THE PLANS SHALL BE REPLACED AT NO ADDITIONAL COST TO THE DEPARTMENT.
- BEFORE BEGINNING ANY WORK, THE CONTRACTOR SHALL RETAIN AND RECORD FOR FUTURE REFERENCE, ALL EXISTING PAVEMENT MARKING LINES (AND RAISED REFLECTIVE PAVEMENT MARKERS) IN ORDER THAT THESE LOCATIONS CAN BE RE-ESTABLISHED FOR STRIPING. EXACT LOCATIONS OF ALL PAVEMENT MARKINGS SHALL BE AS DIRECTED BY THE ENGINEER.
- THE CONTRACTOR WILL NOT BE ALLOWED TO SET UP A YARD OR FIELD OFFICE ON STATE PROPERTY WITHOUT THE WRITTEN PERMISSION OF THE DEPARTMENT.
- IT SHALL BE THE CONTRACTOR'S RESPONSIBILITY TO VERIFY ALL DIMENSIONS AND CONDITIONS EXISTING IN THE FIELD PRIOR TO CONSTRUCTION AND ORDERING OF MATERIALS.
- THE RESIDENT ENGINEER SHALL CONTACT ERIC CAMPOS, AREA TRAFFIC FIELD ENGINEER, AT ERIC.CAMPOS@ILLINOIS.GOV A MINIMUM OF TWO (2) WEEKS PRIOR TO THE PLACEMENT OF PERMANENT PAVEMENT MARKINGS.
- DO NOT SCALE PLANS FOR CONSTRUCTION DIMENSIONS.
- THE CONTRACTOR SHALL BE REQUIRED TO PROVIDE ACCESS TO ABUTTING PROPERTY AT ALL TIMES DURING THE CONSTRUCTION OF THIS PROJECT.
- LOCATIONS OF COMBINATION CONCRETE CURB AND GUTTER REMOVAL AND REPLACEMENT (OR COMBINATION CURB AND GUTTER (THE TYPE SPECIFIED ON THE PLANS)), WILL BE DETERMINED IN THE FIELD BY THE RESIDENT ENGINEER / TECHNICIAN.
- CATCH BASINS, MANHOLES, INLETS, DRAINAGE STRUCTURES AND VALVE VAULTS ADJUSTMENT AND/OR RECONSTRUCTION LOCATIONS WILL BE DETERMINED IN THE FIELD BY THE RESIDENT ENGINEER / TECHNICIAN.
- EXISTING BROKEN FRAMES AND LIDS SHALL BE REMOVED AND DISPOSED OF BY THE CONTRACTOR AND SHALL BE REPLACED AS DIRECTED BY THE ENGINEER. REPLACEMENT FRAMES AND LIDS WILL BE PAID FOR ACCORDING TO ARTICLE 109.04 OF THE STANDARD SPECIFICATIONS, UNLESS A SEPARATE PAY ITEM HAS BEEN PROVIDED.
- ALL DRAINAGE ADJUSTMENTS, AND CHAIN LINK REMOVAL AND PLACEMENT WILL BE DETERMINED IN THE FIELD BY THE RESIDENT ENGINEER.
- THE CONTRACTOR SHALL USE CARE IN GRADING OR EXCAVATING NEAR ANY AND ALL EXISTING ITEMS THAT WILL NOT BE REMOVED INCLUDING PREVIOUSLY SEEDED AREAS. ANY DAMAGE DONE TO EXISTING ITEMS BY THE CONTRACTOR SHALL BE REPAIRED AT THE CONTRACTOR'S OWN EXPENSE TO THE SATISFACTION OF THE ENGINEER.
- THE CONTRACTOR SHALL MAINTAIN PEDESTRIAN ACCESS AT ALL TIMES DURING CONSTRUCTION.
- ANY LOOSE MATERIAL DEPOSITED IN THE FLOW LINE OF CURB OR DRAINAGE STRUCTURES, WHICH OBSTRUCTS THE NATURAL FLOW OF WATER, SHALL BE REMOVED AT THE CLOSE OF EACH WORKING DAY. PRIOR TO ACCEPTANCE OF THE IMPROVEMENT, ALL DRAINAGE STRUCTURES SHALL BE FREE OF DIRT AND DEBRIS. THIS WORK WILL NOT BE PAID FOR SEPARATELY BUT SHALL BE CONSIDERED AS INCIDENTAL.
- THE CONTRACTOR SHALL TAKE ALL NECESSARY PRECAUTIONS FOR THE PROTECTION OF EXISTING PLANT MATERIAL FOR WHICH THE CONTRACT DOES NOT PROVIDE REMOVAL. THE PROTECTION OF EXISTING PLANT MATERIAL AND THE REPAIR OR REPLACEMENT OF EXISTING PLANT MATERIAL DAMAGED BY THE CONTRACTOR SHALL BE DONE IN ACCORDANCE WITH THE REQUIREMENTS OF SECTION 201 OF THE STANDARD SPECIFICATIONS.
- TEN (10) FOOT TRANSITIONS SHALL BE USED TO MATCH PROPOSED CURB AND GUTTER ITEMS OF WORK TO EXISTING CURBS AND GUTTER IN THE FIELD, UNLESS OTHERWISE SHOWN. THE TRANSITIONS SHALL BE PAID FOR AT THE CONTRACT UNIT PRICE FOR THE PROPOSED ITEMS OF WORK SPECIFIED.
- THE GENERAL CONTRACTOR IS REQUIRED TO HIRE AN ENVIRONMENT FIRM TO CONTINUOUSLY MONITOR FOR WORKER SAFETY AND SOIL CONTAMINATION AT SEVERAL LOCATIONS. SEE SPECIAL PROVISION AND SUPPLEMENTAL SPECIFICATIONS FOR DETAILS.
- IT IS THE CONTRACTOR'S RESPONSIBILITY TO PROVIDE A FIELD LABORATORY FOR USE FOR ANY ON-SITE TESTING BY THE ENVIRONMENTAL FIRM. NO TESTING OF ANY KIND, CONTAMINATED OR NON-CONTAMINATED, FLUID OR SOLID SHALL BE PERMITTED IN THE ENGINEER'S FIELD OFFICE.

**GENERAL NOTES CONTINUE ON SHEET NO.3**

MODEL: Default  
 FILE NAME: p:\bullet-paw-beadley.com\P\INDOT\Documents\DOT\_Offices\Dir\rdet\_1\Project\107919\Cadd\data\Design\107919-shr-agen\cadd.dgn

USER NAME = aya.elkhatib	DESIGNED -	REVISED -	<b>STATE OF ILLINOIS DEPARTMENT OF TRANSPORTATION</b>	<b>I-55 #137 MAINTENANCE YARD INDEX OF SHEETS, STATE STANDARDS &amp; GENERAL NOTES</b>	FAU RTE.	SECTION	COUNTY	TOTAL SHEETS	SHEET NO.
DRAWN -	REVISED -	3510			2018-121-R5	WILL	14	2	
PLOT SCALE = 100,0000 ' / in.	CHECKED -	REVISED -			CONTRACT NO. 62H63				
PLOT DATE = 10/11/2023	DATE -	REVISED -			SCALE:	SHEET	OF	SHEETS	STA.
					ILLINOIS FED. AID PROJECT				

**GENERAL NOTES (CONTINUED)**

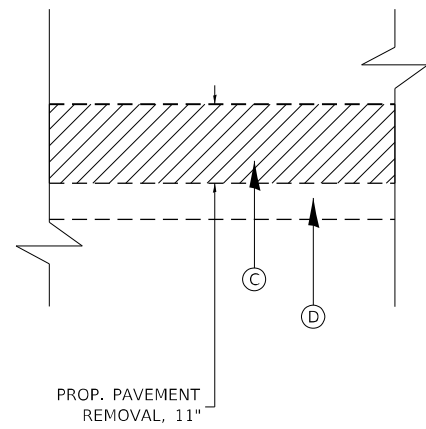
- 20. THE CONTRACTOR SHALL COORDINATE CONSTRUCTION ACTIVITIES WITH THE UTILITY COMPANIES AND VILLAGE OF BOLINGBROOK.
- 21. FRAMES AND GRATES ADJUSTMENT OF PRIVATE UTILITIES WITHIN THE LIMITS OF THE IMPROVEMENTS SHALL BE BONE BY THEIR RESPECTIVE OWNERS AND ARE NOT PART OF THIS CONTRACT.
- 22. THE CONTRACTOR SHALL CONTACT KALPANA KANNAN-HOSADURGA, THE DISTRICT ONE TRAFFIC CONTROL SUPERVISOR AT KALPANA.KANNAN-HOSADURGA@ILLINOIS.GOV A MINIMUM OF 72 HOURS IN ADVANCE OF BEGINNING WORK.

MODEL: Default  
 FILE NAME: p:\ultra-cw-bea\ey.com\PIV\DOT\Documents\DOT Office\Dir\dct\_1\Project\1079\_19\CADD\DATA\Design\1079\_19-ubr-agenccr.dgn

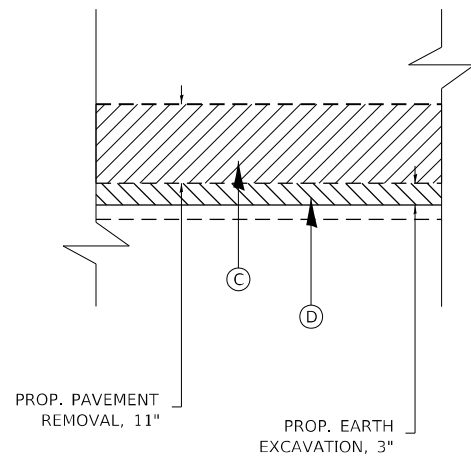
USER NAME = aya.elkhatib	DESIGNED -	REVISED -	<b>STATE OF ILLINOIS DEPARTMENT OF TRANSPORTATION</b>	<b>I-55 #137 MAINTENANCE YARD INDEX OF SHEETS, STATE STANDARDS &amp; GENERAL NOTES</b>	FAU RTE.	SECTION	COUNTY	TOTAL SHEETS	SHEET NO.
PLOT SCALE = 100,0000 ' / in.	DRAWN -	REVISED -			3510	2018-121-R5	WILL	14	3
PLOT DATE = 10/11/2023	CHECKED -	REVISED -			CONTRACT NO. 62H63				
	DATE -	REVISED -			ILLINOIS FED. AID PROJECT				
				SCALE:	SHEET	OF	SHEETS	STA.	TO STA.



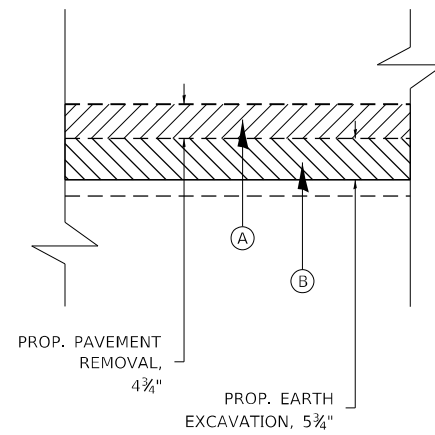




EXISTING TYPICAL SECTION NO. 1  
STA. 10+21 TO STA. 11+44



EXISTING TYPICAL SECTION NO. 1A  
(PCC PAD)  
STA. 10+64 TO STA. 12+14



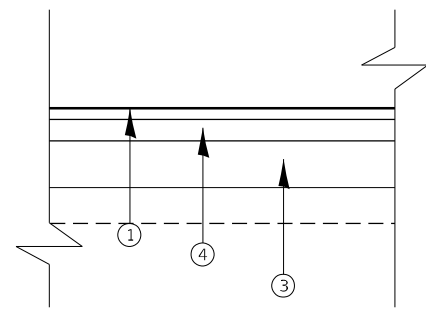
EXISTING TYPICAL SECTION NO. 2  
STA. 11+44 TO STA. 14+52

**LEGEND - EXISTING:**

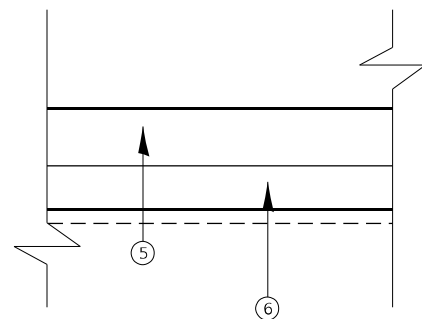
- (A) EXISTING HMA SURFACE COURSE, ±4.75"
- (B) EXISTING CRUSHED STONE, ±8"
- (C) EXISTING HMA SURFACE COURSE, 11"
- (D) EXISTING SILTY CLAY, 5"+

**LEGEND - PROPOSED**

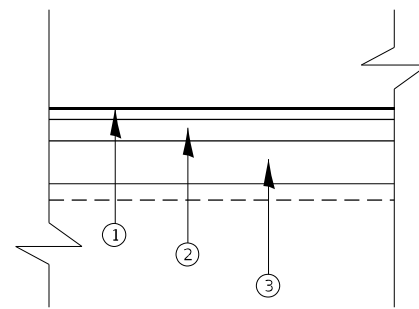
- (1) PROPOSED HOT-MIX ASPHALT SURFACE COURSE, IL-9.5, MIX "D", N70, 1-1/2"
- (2) PROPOSED HOT-MIX ASPHALT BINDER COURSE, IL-19.0, N70, 3"
- (3) PROPOSED SUBBASE GRANULAR MATERIAL, TYPE B, 6"
- (4) PROPOSED HOT-MIX ASPHALT BINDER COURSE, IL-19.0, N70, 3.5"
- (5) PROPOSED PCC PAVEMENT, 8"
- (6) PROPOSED AGGREGATE BASE COURSE, 6"



PROPOSED TYPICAL SECTION NO. 1  
STA. 10+21 TP STA. 11+44



PROPOSED TYPICAL SECTION NO. 1A  
(PCC PAD)  
STA. 10+64 TO STA. 12+14



PROPOSED TYPICAL SECTION NO. 2  
STA. 11+44 TO STA 14+52

HOT-MIX ASPHALT MIXTURE REQUIREMENTS		QUALITY MANAGEMENT PROGRAM (QMP)
MIXTURE TYPE	AIR VOIDS @ Ndes	
<b>PAVEMENT RECONSTRUCTION</b>		
HOT-MIX ASPHALT SURFACE COURSE, IL-9.5, MIX "D", N70, 1-1/2"	4% AT 70 GYR.	QC/QA
HOT-MIX ASPHALT BINDER COURSE, IL-19.0, N70, 3" and 3.5"	4% AT 70 GYR.	QC/QA
<b>DRIVEWAYS</b>		
HOT-MIX ASPHALT SURFACE COURSE, IL-9.5, MIX "D", N70, 1-1/2"	4% AT 70 GYR.	QC/QA
HOT-MIX ASPHALT BINDER COURSE, IL-19.0, N70, 8-1/2"	4% AT 70 GYR.	QC/QA
QMP DESIGNATION: QUALITY CONTROL/QUALITY ASSURANCE (QC/QA): QUALITY CONTROL FOR PERFORMANCE (QCP)		

NOTE 1: THE UNIT WEIGHT USED TO CALCULATE ALL HMA SURFACE MIXTURE QUANTITIES IS 112 LBS/SQ YD/IN.

NOTE 2: THE "AC TYPE" FOR POLYMERIZED HMA MIXES SHALL BE "SBS/SBR PG 76-22" AND FOR NON-POLYMERIZED HMA THE "AC TYPE" SHALL BE "PG 64-22" UNLESS MODIFIED BY RECLAIMED MATERIALS SPECIFICATIONS.

MODEL: Default  
 FILE NAME: p:\ultra-cw-beachy.com\PIV\DOT\Documents\DOT Office\Dir\rdet\_1\Project\1079\9\Cadd\data\Design\107919-shr-tyr\pic1.dgn

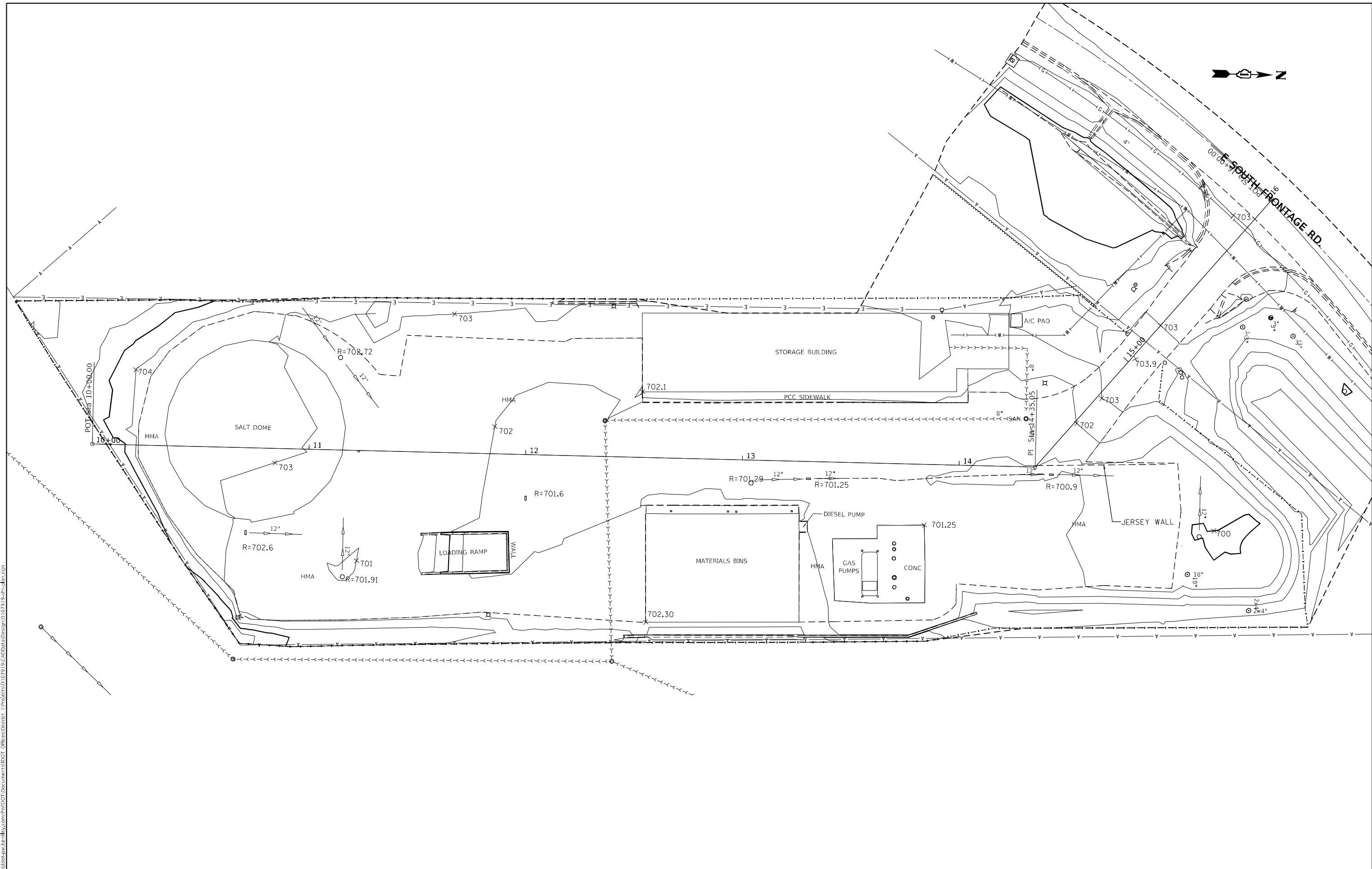
USER NAME = aya.elkhatib	DESIGNED -	REVISED -
PLOT SCALE = 100,0000' / in.	DRAWN -	REVISED -
PLOT DATE = 10/11/2023	CHECKED -	REVISED -
	DATE -	REVISED -

**STATE OF ILLINOIS  
DEPARTMENT OF TRANSPORTATION**

**I-55 #137 MAINTENANCE YARD  
TYPICAL SECTIONS**

SCALE: SHEET OF SHEETS STA. TO STA.

F.A.U. RTE.	SECTION	COUNTY	TOTAL SHEETS	SHEET NO.
3510	2018-121-R5	WILL	14	6
CONTRACT NO. 62H63				
ILLINOIS FED. AID PROJECT				



MODEL: Default  
 FILE NAME: p:\project\aw\_bentley.com\p\indot\documents\dot\_office\dir\det\_1\project\107919\cadd\data\design\107919\_sht-6a.dwg

USER NAME = aya.elkhatib	DESIGNED -	REVISED -
	DRAWN -	REVISED -
PLOT SCALE = 40,0000 * / in.	CHECKED -	REVISED -
PLOT DATE = 9/1/2023	DATE -	REVISED -

**STATE OF ILLINOIS**  
**DEPARTMENT OF TRANSPORTATION**

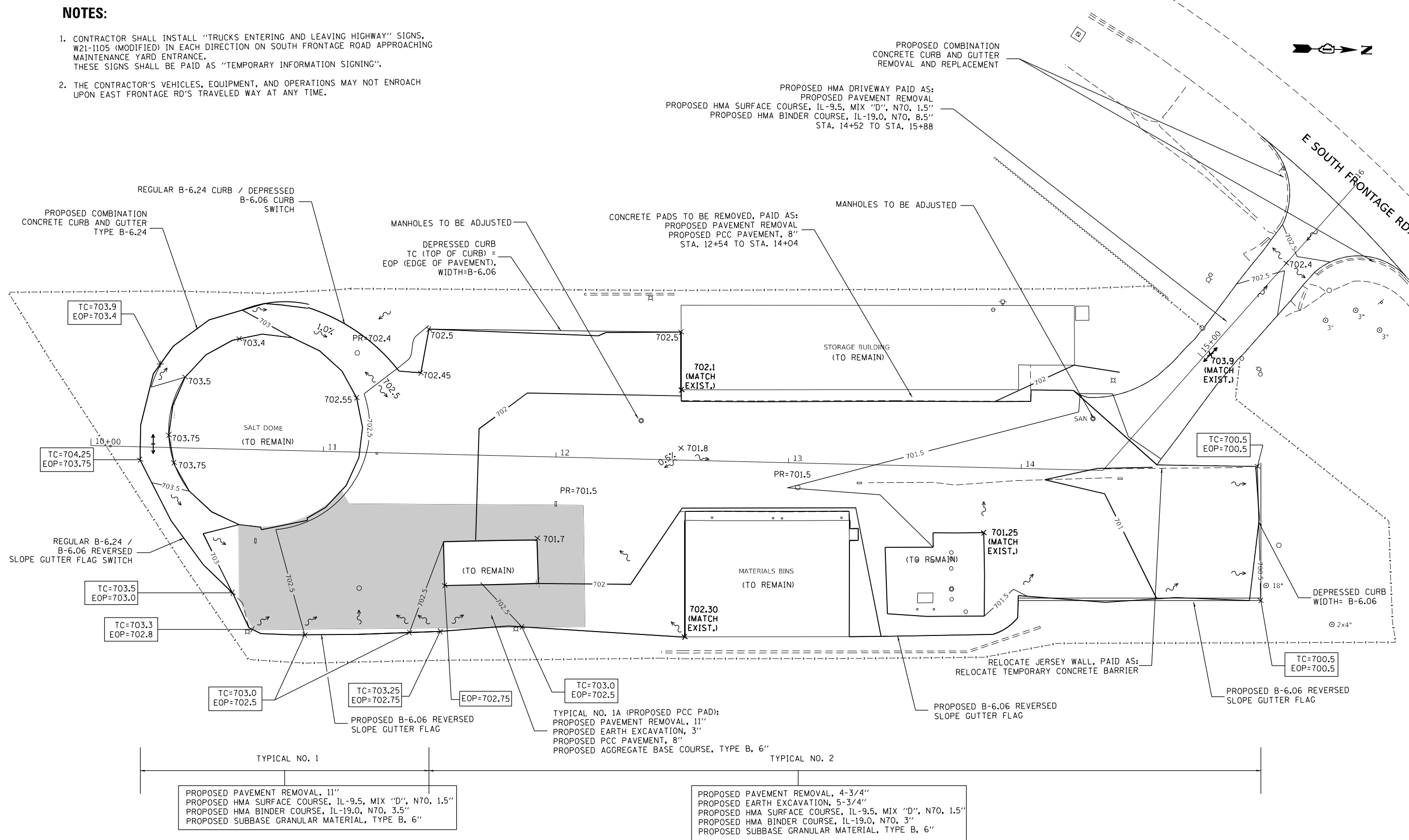
**I-55 #137 MAINTENANCE YARD**  
**EXISTING SITE PLAN**

SCALE: SHEET OF SHEETS STA. TO STA.

F.A.U. RTE. 3510	SECTION 2018-121-R5	COUNTY WILL	TOTAL SHEETS 14	SHEET NO. 7
			CONTRACT NO. 62H63	
ILLINOIS FED. AID PROJECT				

**NOTES:**

- CONTRACTOR SHALL INSTALL "TRUCKS ENTERING AND LEAVING HIGHWAY" SIGNS, W21-1105 (MODIFIED) IN EACH DIRECTION ON SOUTH FRONTAGE ROAD APPROACHING MAINTENANCE YARD ENTRANCE. THESE SIGNS SHALL BE PAID AS "TEMPORARY INFORMATION SIGNING".
- THE CONTRACTOR'S VEHICLES, EQUIPMENT, AND OPERATIONS MAY NOT ENROACH UPON EAST FRONTAGE RD'S TRAVELED WAY AT ANY TIME.



**TYPICAL NO. 1**

PROPOSED PAVEMENT REMOVAL, 11"  
 PROPOSED HMA SURFACE COURSE, IL-9.5, MIX "D", N70, 1.5"  
 PROPOSED HMA BINDER COURSE, IL-19.0, N70, 3.5"  
 PROPOSED SUBBASE GRANULAR MATERIAL, TYPE B, 6"

**TYPICAL NO. 2**

PROPOSED PAVEMENT REMOVAL, 4-3/4"  
 PROPOSED EARTH EXCAVATION, 5-3/4"  
 PROPOSED HMA SURFACE COURSE, IL-9.5, MIX "D", N70, 1.5"  
 PROPOSED HMA BINDER COURSE, IL-19.0, N70, 3"  
 PROPOSED SUBBASE GRANULAR MATERIAL, TYPE B, 6"

**TYPICAL NO. 1A (PROPOSED PCC PAD):**  
 PROPOSED PAVEMENT REMOVAL, 11"  
 PROPOSED EARTH EXCAVATION, 3"  
 PROPOSED PCC PAVEMENT, 8"  
 PROPOSED AGGREGATE BASE COURSE, TYPE B, 6"

MODEL: Default  
 FILE: I:\AutoCAD\Projects\I-55\I-55\_#137\_Maintenance\_Yard\I-55\_#137\_Maintenance\_Yard.dwg  
 PROJECT: I-55\_#137\_Maintenance\_Yard  
 I:\AutoCAD\Projects\I-55\I-55\_#137\_Maintenance\_Yard\I-55\_#137\_Maintenance\_Yard.dwg

USER NAME = aya.elkhatib	DESIGNED -	REVISED -
	DRAWN -	REVISED -
PLOT SCALE = 40,0000 * / in.	CHECKED -	REVISED -
PLOT DATE = 9/1/2023	DATE -	REVISED -

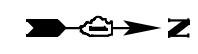
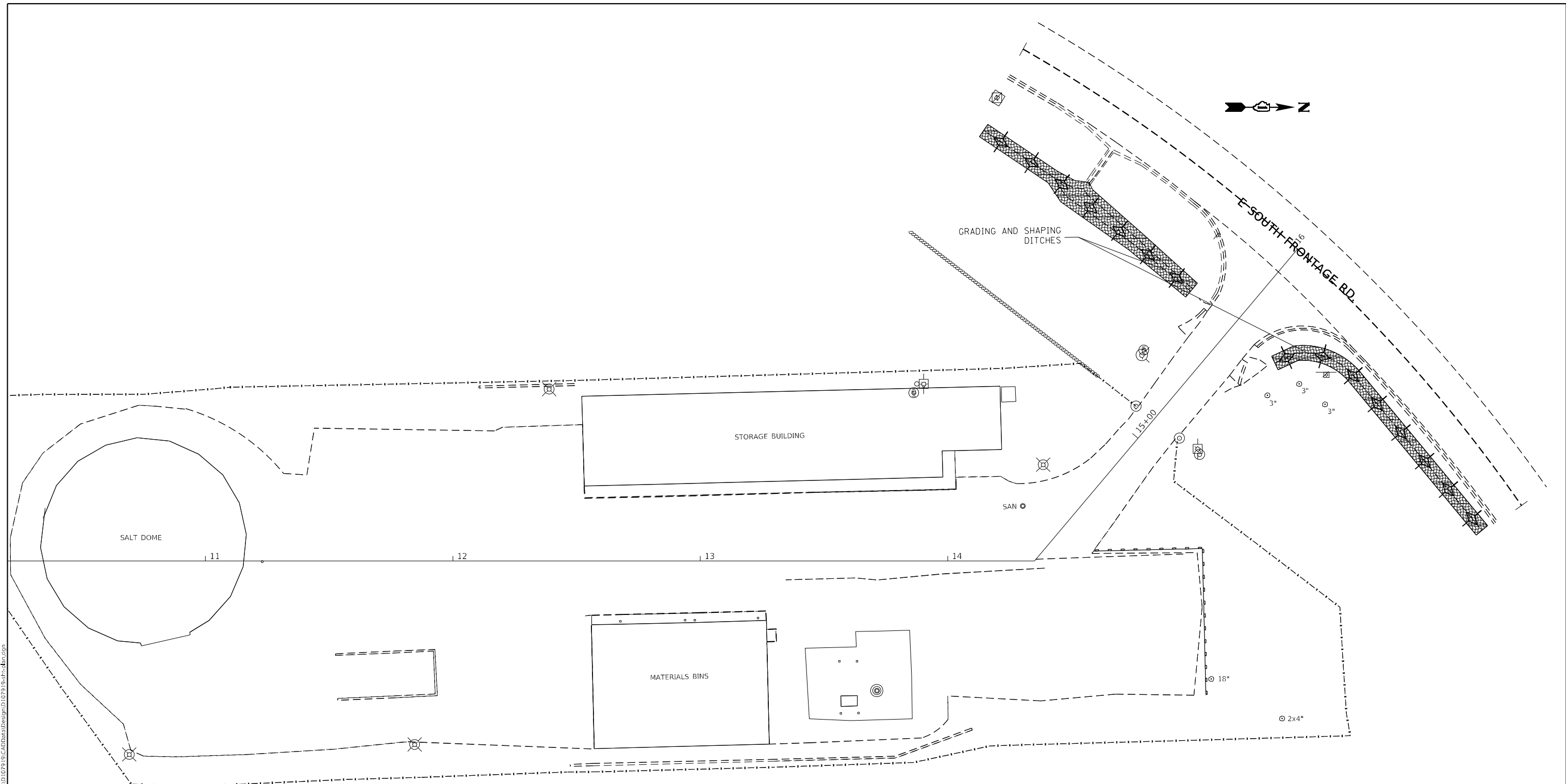
**STATE OF ILLINOIS  
 DEPARTMENT OF TRANSPORTATION**

<b>I-55 #137 MAINTENANCE YARD          PROPOSED SITE GRADING PLAN</b>	
SCALE:	SHEET OF SHEETS STA. TO STA.

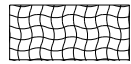
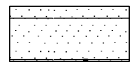

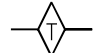
F.A.U. RTE.	SECTION	COUNTY	TOTAL SHEETS	SHEET NO.
3510	2018-121-R5	WILL	14	8
CONTRACT NO. 62H63				
ILLINOIS FED. AID PROJECT				



MODEL: Default  
 FILE NAME: p:\ultra-cw-bentley.com\PIV\DOT\Documents\DOT Office\District 11\Project\11079 19\CADD\data\Design\11079 19-shr-land-con.dwg



**LEGEND**

-  EROSION CONTROL BLANKET
-  SEEDING, CLASS 2A
-  PERIMETER EROSION BARRIER
-  TEMPORARY DITCH CHECKS

USER NAME = aya.elkhatib	DESIGNED -	REVISED -
	DRAWN -	REVISED -
PLOT SCALE = 40,0000 * / in.	CHECKED -	REVISED -
PLOT DATE = 9/1/2023	DATE -	REVISED -

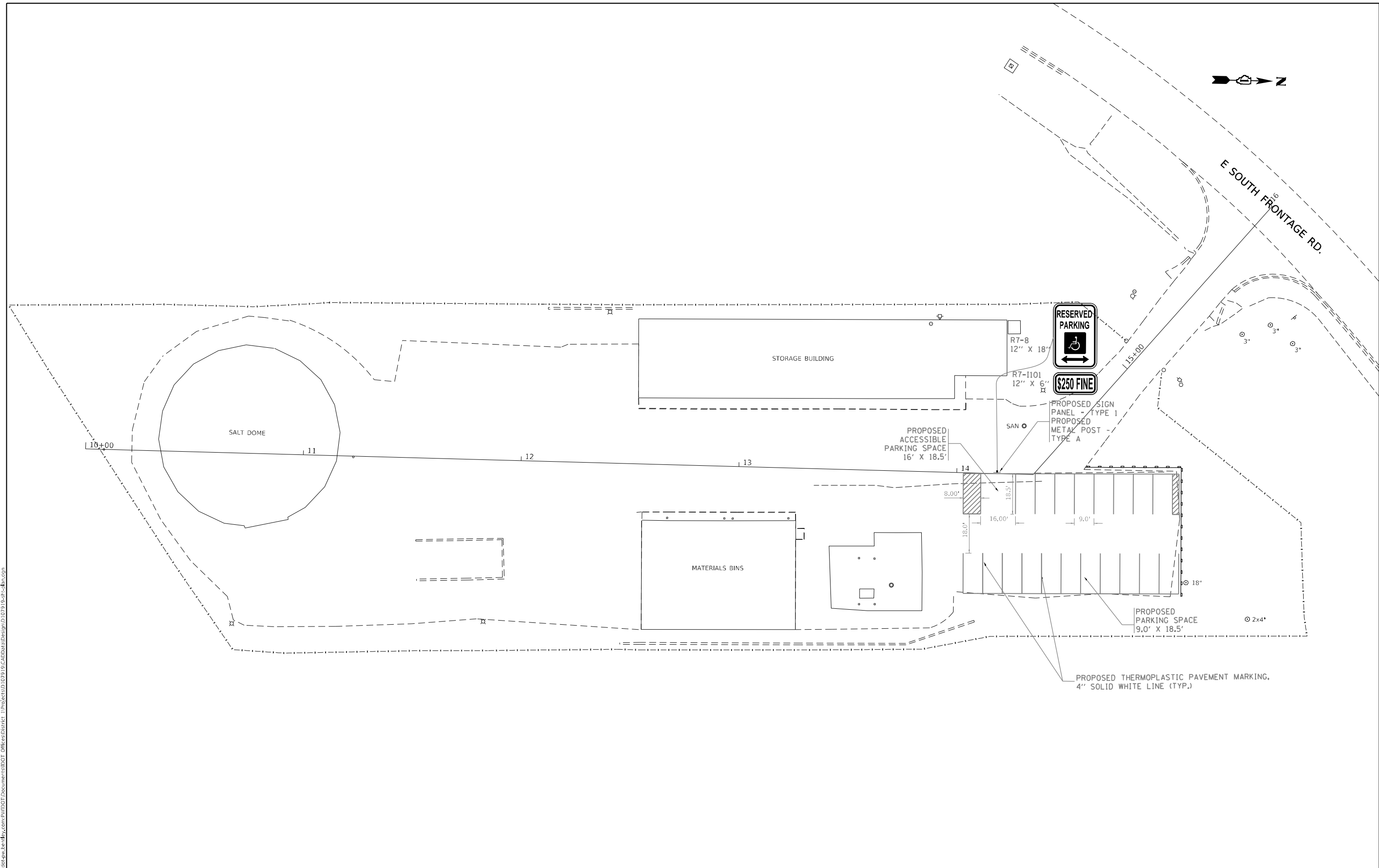
**STATE OF ILLINOIS  
 DEPARTMENT OF TRANSPORTATION**

**I-55 #137 MAINTENANCE YARD  
 LANDSCAPING, EROSION AND SEDIMENT CONTROL PLAN**

F.A.U. RTE.	SECTION	COUNTY	TOTAL SHEETS	SHEET NO.
3510	2018-121-R5	WILL	14	9
CONTRACT NO. 62H63				
ILLINOIS FED. AID PROJECT				

SCALE: SHEET OF SHEETS STA. TO STA.

MODEL: Default  
 FILE NAME: \\sldocpaw.bentley.com\P\I\DOT\Documents\DOT Office\District 1\Project\107919\CADD\Drawings\107919-19-19-19-19.dwg



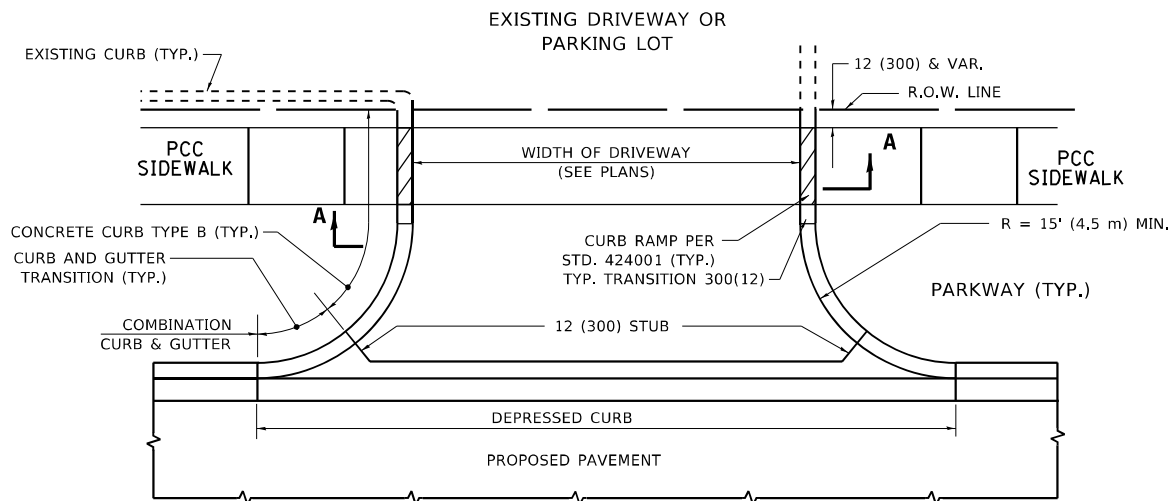
USER NAME = aya.elkhatib	DESIGNED -	REVISED -
	DRAWN -	REVISED -
PLOT SCALE = 40,0000 * / in.	CHECKED -	REVISED -
PLOT DATE = 10/11/2023	DATE -	REVISED -

**STATE OF ILLINOIS**  
**DEPARTMENT OF TRANSPORTATION**

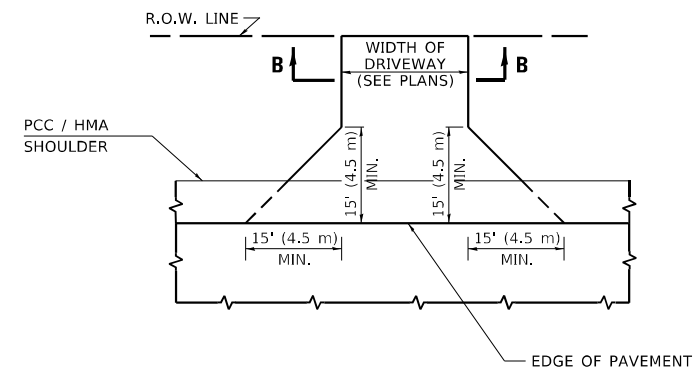
**I-55 #137 MAINTENANCE YARD**  
**PAVEMENT MARKING AND SIGNING PLAN**

F.A.U. RTE.	SECTION	COUNTY	TOTAL SHEETS	SHEET NO.
3510	2018-121-R5	WILL	14	10
CONTRACT NO. 62H63				
ILLINOIS FED. AID PROJECT				

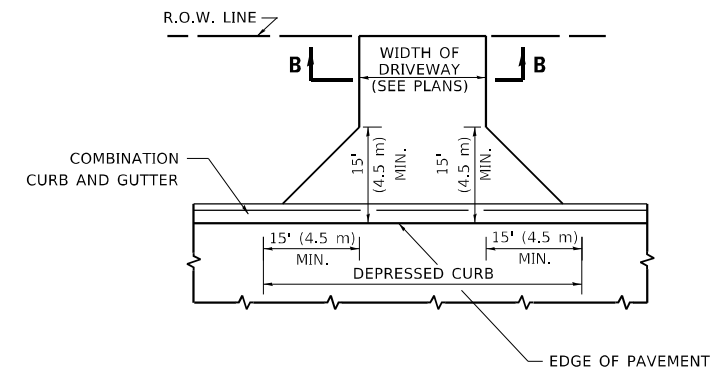
SCALE: SHEET OF SHEETS STA. TO STA.



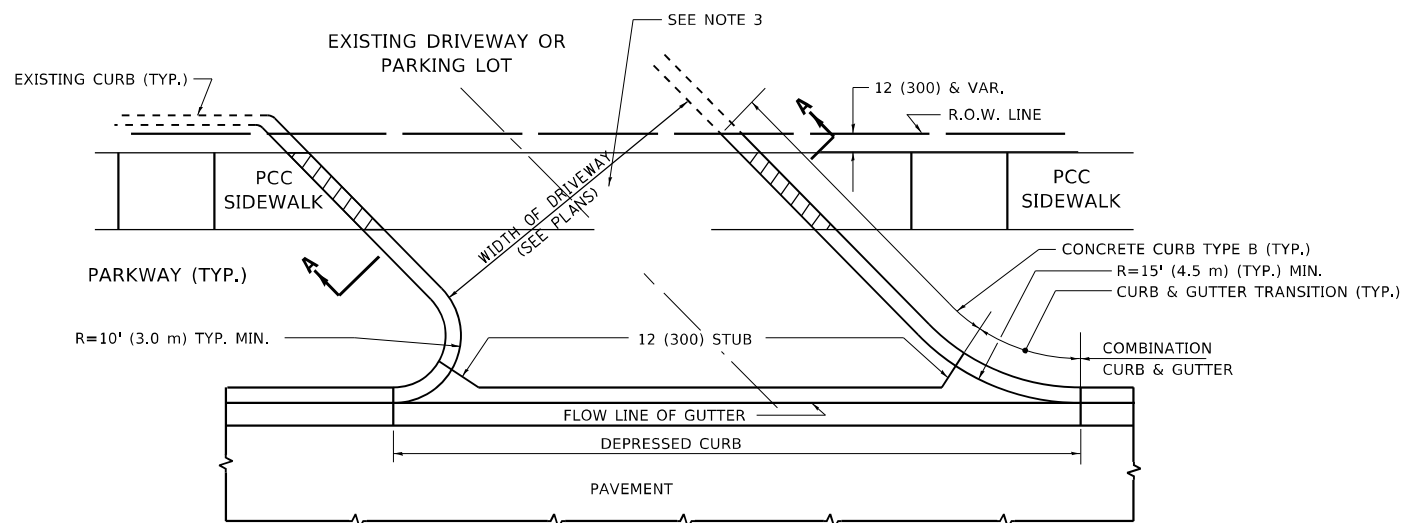
**WITH CONCRETE CURB, TYPE B**



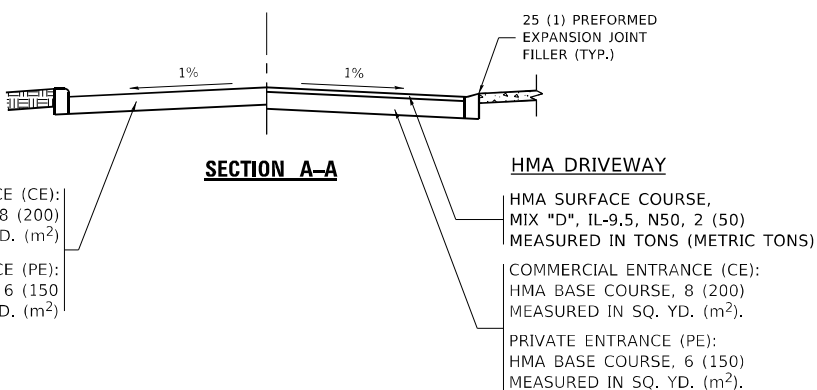
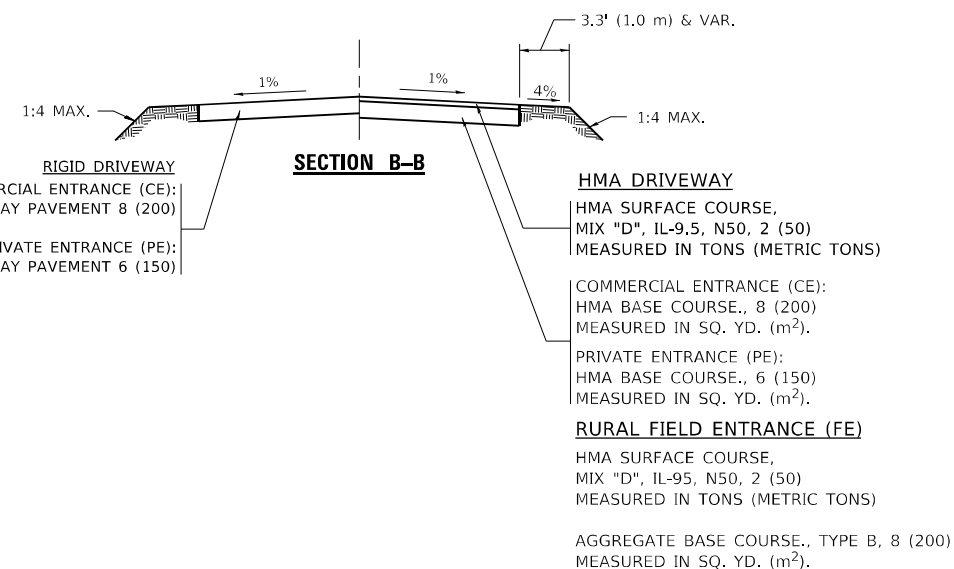
**ADJACENT TO PCC / HMA SHOULDER**



**ADJACENT TO CURB AND GUTTER**



**WITH CONCRETE CURB, TYPE B**



**GENERAL NOTES**

1. DRIVEWAY SLOPES, LOCATIONS, & GEOMETRIC LAYOUT SHALL BE IN ACCORDANCE WITH THE LATEST EDITION OF THE "HANDBOOK FOR POLICY ON PERMITS FOR ACCESS DRIVEWAYS TO STATE HIGHWAYS". FOR FURTHER LAYOUT REQUIREMENTS, REFER TO ILLUSTRATIONS IN THE PERMIT HANDBOOK. DRIVEWAYS SHALL BE REPLACED IN KIND, UNLESS OTHERWISE NOTED ON THE PLANS.
2. COMMERCIAL DRIVEWAYS SHALL BE CONSTRUCTED WITH CONCRETE CURB, TYPE B RETURNS EXCEPT WHEN THE SIDEWALK EDGE IS 4 FEET (1.2 METERS) OR LESS FROM THE BACK OF CURB, CONSTRUCT A FLARE DRIVEWAY WITHOUT CURB.

ALL DIMENSIONS ARE IN INCHES (MILLIMETERS) UNLESS OTHERWISE NOTED.

MODEL: Default  
 FILE NAME: p:\projects\paw\_bentley.com\p\w\DOT\Documents\DOT Office\Drawings\11\Project\11079\91\CAD\DATA\Design\DrStk.dgn

USER NAME = aya.elkhatib	DESIGNED - R. SHAH	REVISED - R. BORO 06-11-08
	DRAWN -	REVISED - R. BORO 09-06-11
PLOT SCALE = 100,0000' / in.	CHECKED -	REVISED - K. SMITH 08-28-19
PLOT DATE = 9/1/2023	DATE - 11-04-95	REVISED - K. SMITH 11-18-22

STATE OF ILLINOIS  
 DEPARTMENT OF TRANSPORTATION

DRIVEWAY DETAILS - DISTANCE BETWEEN R.O.W.  
 AND FACE OF CURB & EDGE OF SHOULDER ≥ 15'(4.5m)

SCALE: NONE SHEET 1 OF 1 SHEETS STA. TO STA.

FAU RTE.	SECTION	COUNTY	TOTAL SHEETS	SHEET NO.
3510	2018-121-R5	WILL	14	11
BD400-01 (BD-01)		CONTRACT NO. 62H63		
ILLINOIS FED. AID PROJECT				





