

FAP RTE.	SECTION	COUNTY	TOTAL SHEETS	SHEET NO.
VAR	2001-083 I	WILL	6	1

STATE OF ILLINOIS  
DEPARTMENT OF TRANSPORTATION  
DIVISION OF HIGHWAYS

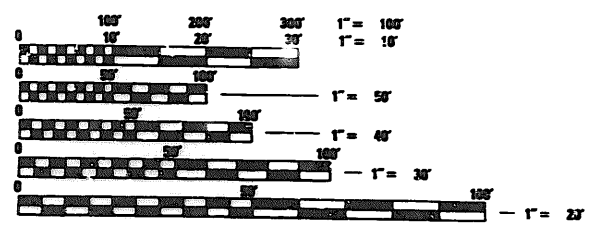
# PLANS FOR PROPOSED HIGHWAY

FOR INDEX OF SHEETS, SEE SHEET NO. 2

VARIOUS LOCATIONS  
SECTION: 2001-083I  
BRIDGE SLOPEWALL REPAIR  
WILL COUNTY  
C-91-260-01



1. SN: 099-0040 I-80 EB OVER DU PAGE RIVER
2. SN: 099-0041 I-80 WB OVER DU PAGE RIVER
3. SN: 099-0039 I-57 SB OVER ABANDONED RR
4. SN: 099-0038 I-57 WB OVER ABANDONED RR
5. SN: 099-0171 ILL 113 OVER HORSE CREEK
6. SN: 099-0186 CENTER ST. OVER U.S. 52



FULL SIZE PLANS HAVE BEEN PREPARED USING STANDARD ENGINEERING SCALES, REDUCED SIZED PLANS WILL NOT CONFORM TO STANDARD SCALES, IN MAKING MEASUREMENTS ON REDUCED PLANS, THE ABOVE SCALES MAY BE USED.

JULIE  
JOINT UTILITY LOCATION INFORMATION FOR EXCAVATION  
800-883-0123

CONTRACT NO. 62231

FOR LOCATION MAP SEE SHEET NO. 2

STATE OF ILLINOIS  
DEPARTMENT OF TRANSPORTATION  
DIVISION OF HIGHWAYS

SUBMITTED July 5, 2001  
John P. Kay DISTRICT ENGINEER

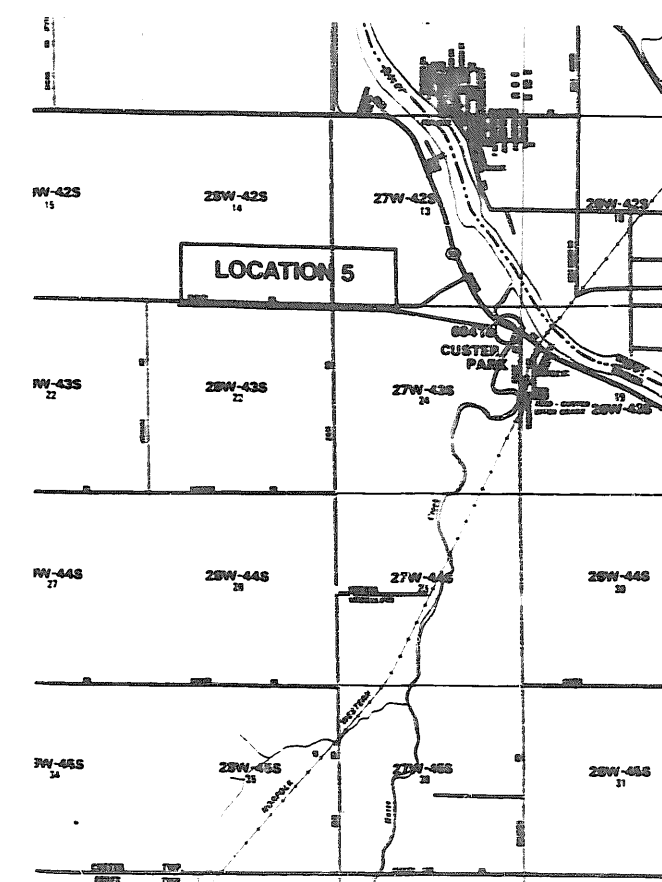
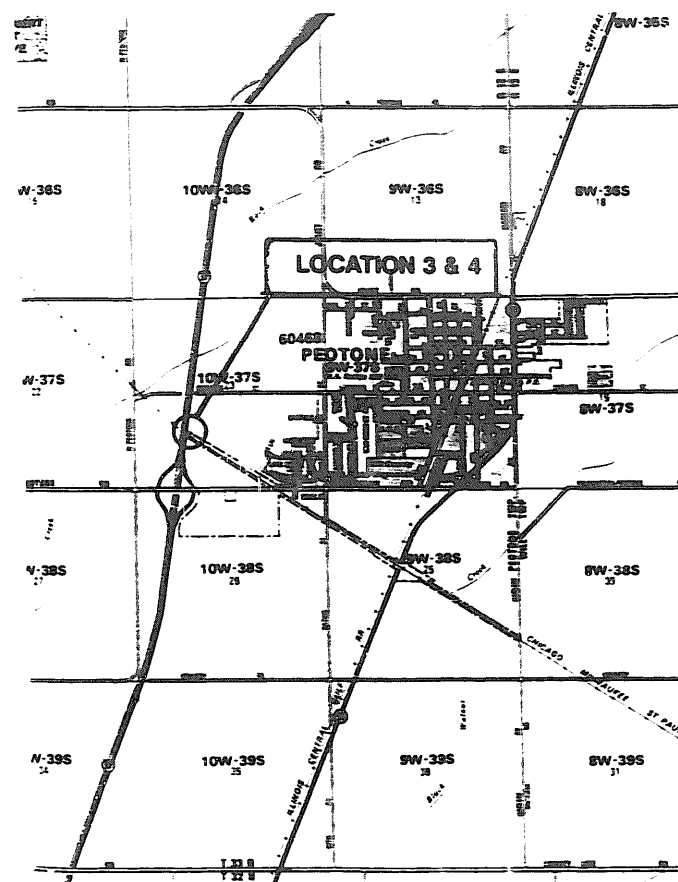
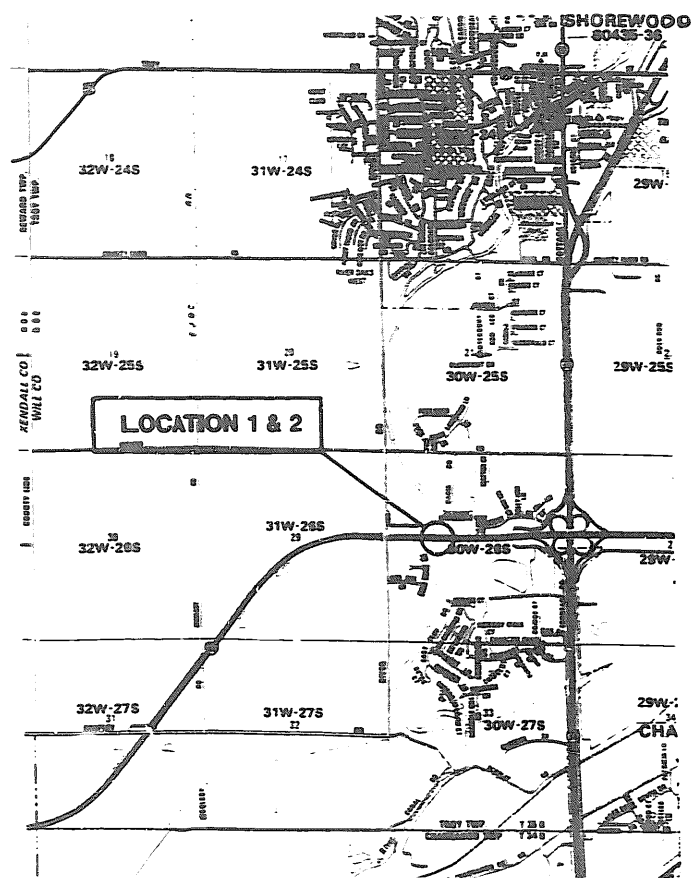
AUGUST 17, 2001  
Michael Blinn  
ENGINEER OF DESIGN AND ENVIRONMENT

AUGUST 17, 2001  
James P. St. James  
DIRECTOR, DIVISION OF HIGHWAYS

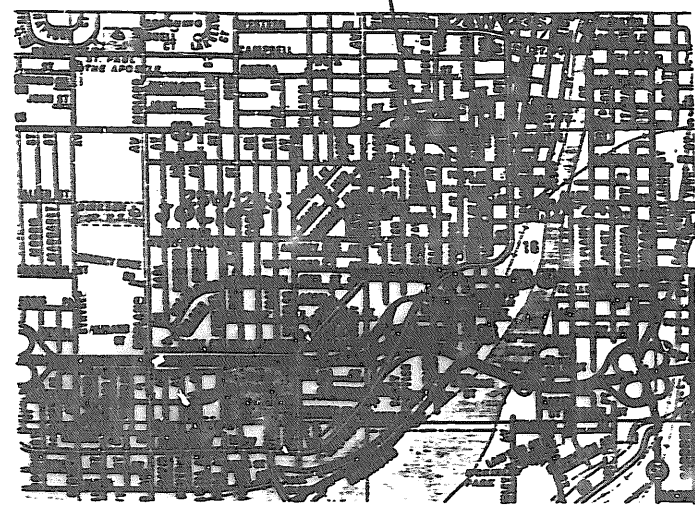
PRINTED BY AUTHORITY OF THE  
STATE OF ILLINOIS

DISTRICT ONE - BUREAU OF MAINTENANCE: K. ANTONSON  
MAINTENANCE DESIGN ENGINEER: R. BORO/B. EPINO (847) 705-4178

SECTION	COUNTY	TOTAL SHEETS	SHEET NO.
VAR 2W-0881	WILL	6	2
STA TO STA		FED. ROAD DIST. NO. 1	
		FED. A. D. PROJECT	



LOCATION 6



**INDEX OF SHEETS**

- 1 TITLE SHEET
- 2 INDEX OF SHEETS AND LOCATION MAPS
- 3 SUMMARY OF QUANTITIES, STATE STANDARDS AND GENERAL NOTES
- 4-5 PLAN SHEETS
- 6 TRAFFIC CONTROL DETAILS FOR FREEWAY SHOULDER CLOSURES, PARTIAL RAMP CLOSURES

REVISIONS	
NAME	DATE
TR	7/16/61

ILLINOIS DEPARTMENT OF TRANSPORTATION

**INDEX OF SHEETS**

**LOCATION MAP**

SCALE VERT HORIZ

DRAWN BY

CHECKED BY

SECTION	COUNTY	TOTAL QUANTITY	SHEET NO.
VAR 2601-0011	WILL	6	3
STA TO STA			
FED ROAD DIST NO 7		ILLINOIS	FED AID PROJECT

**SUMMARY OF QUANTITIES**

**CONSTRUCTION TYPE CODE**

SFTY-2A  
100% STATE

			SN 099-0040	SN 099-0041	SN 099-0038	SN 200-0038	SN 099-0171	SN 099-0186	
20700420	POROUS GRANULAR EMBANKMENT, SUBGRADE	CU YD	1271.00	222.00	222.00	302.00	235.00	88.00	202.0
28100105	STONE RIPRAP, CLASS A3	SQ YD	10.00	0.00	0.00	0.00	0.00	10.00	
50104850	SLOPE WALL REMOVAL	SQ YD	2372.00	350.00	350.00	540.00	540.00	250.00	342.0
51100100	SLOPE WALL 4 INCH	SQ YD	1422.00	0.00	0.00	540.00	540.00	0.00	342.0
51100300	SLOPE WALL 6 INCH	SQ YD	950.00	350.00	350.00	0.00	0.00	250.00	
67000400	ENGINEER'S FIELD OFFICE, TYPE A	CAL MO	3.00	0.50	0.50	0.50	0.50	0.50	0.50
77100100	MOBILIZATION	L SUM	1.00	0.20	0.20	0.20	0.20	0.10	0.10
X0322467	TEMPORARY INFORMATION SIGNING FOR LANE CLOSURE	SQ FT	192.00	0.00	0.00	0.00	0.00	96.00	96.0
X4207400	QCQA CONCRETE	CU YD	316.00	58.00	58.00	60.00	60.00	42.00	38.0
70101800	TRAFFIC CONTROL AND PROTECTION (SPECIAL)	L SUM	1.00	0.17	0.17	0.17	0.17	0.16	0.16

**GENERAL NOTES**

- BEFORE STARTING ANY EXCAVATION, THE CONTRACTOR SHALL CALL "J.U.L.I.E." AT (800)892-0123 FOR FIELD LOCATIONS OF BURIED ELECTRIC, TELEPHONE AND GAS UTILITIES. (48 HOUR NOTIFICATION IS REQUIRED).
- THE CONTRACTOR WILL NOT BE ALLOWED TO SET UP A YARD OR FIELD OFFICE ON STATE PROPERTY WITHOUT WRITTEN PERMISSION FROM THE DEPARTMENT.
- BARRICADES:** THE CONTRACTOR SHALL PROVIDE AND INSTALL TWO (2) WEIGHTED SAND BAGS ON EACH UNBALLASTED TYPE I OR TYPE II BARRICADE USED. (ONE [1] WEIGHTED SAND BAG ACROSS EACH BOTTOM RAIL). THIS WORK WILL NOT BE PAID FOR SEPARATELY, BUT THE COSTS SHALL BE CONSIDERED AS INCLUDED IN THE CONTRACT UNIT PRICES FOR THE CONSTRUCTION ITEMS INVOLVED, AND NO ADDITIONAL COMPENSATION WILL BE ALLOWED.
- IT SHALL BE THE CONTRACTOR'S RESPONSIBILITY TO VERIFY ALL DIMENSIONS AND CONDITIONS EXISTING IN THE FIELD PRIOR TO CONSTRUCTION AND ORDERING OF MATERIALS.
- THE CONTRACTOR SHALL CONTACT THE DISTRICT ONE TRAFFIC CONTROL SUPERVISOR AT (847)705-4155 and (847) 705-4470 A MINIMUM OF 72 HOURS IN ADVANCE OF BEGINNING WORK.

**STATE STANDARD**

- 701001 Off-Road Operations, 2L 2W
- 701101 Off Road Operations Multilane
- 701301-01 Lane Closure, 2L 2W Short time Operations
- 702001-02 Traffic Control Devices

REVISIONS	
NAME	DATE

ILLINOIS DEPARTMENT OF TRANSPORTATION

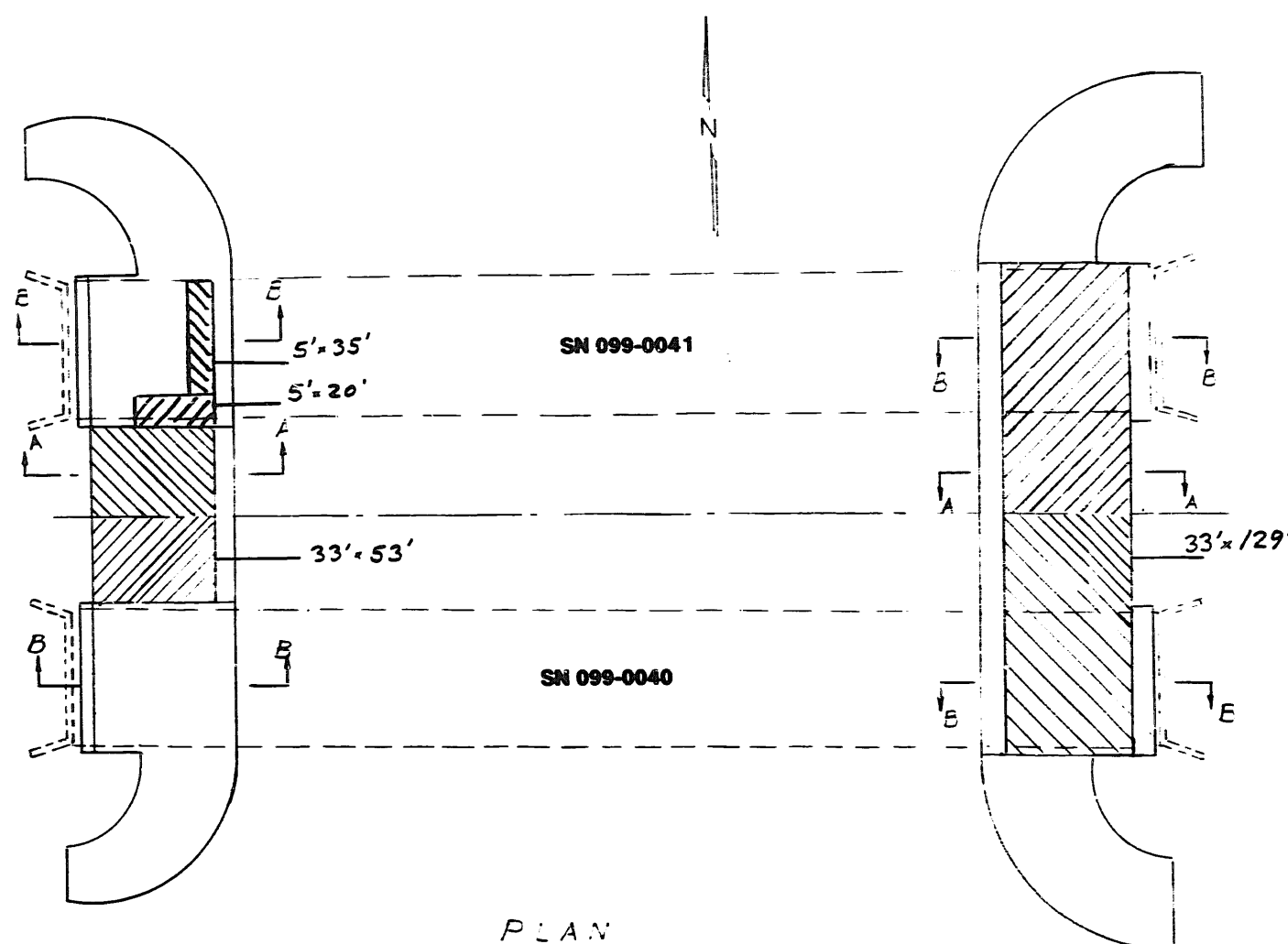
**SUMMARY OF QUANTITIES  
STATE STANDARDS  
GENERAL NOTES**

SCALE: VERT. NONE

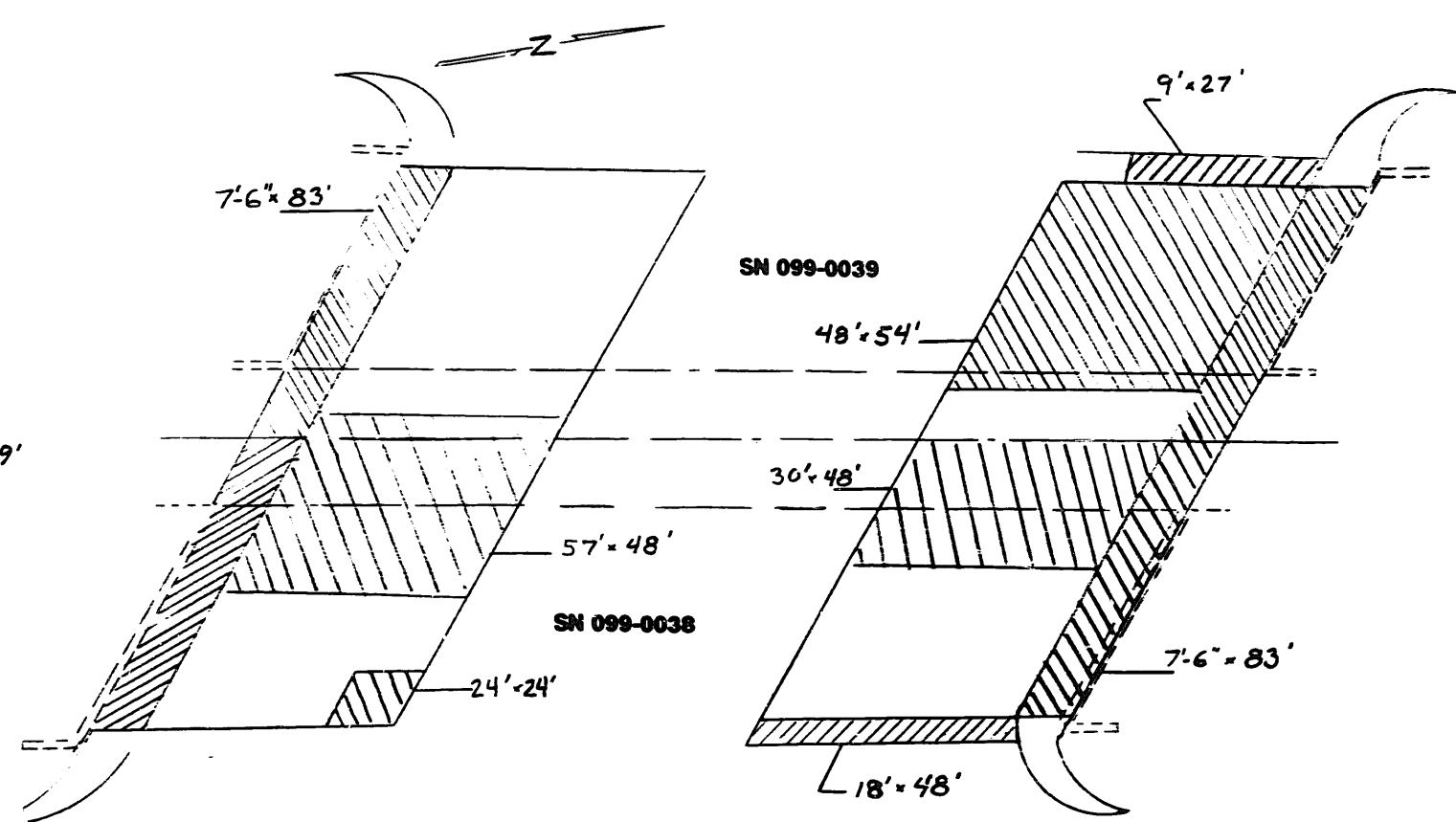
DRAWN BY: \_\_\_\_\_  
CHECKED BY: \_\_\_\_\_



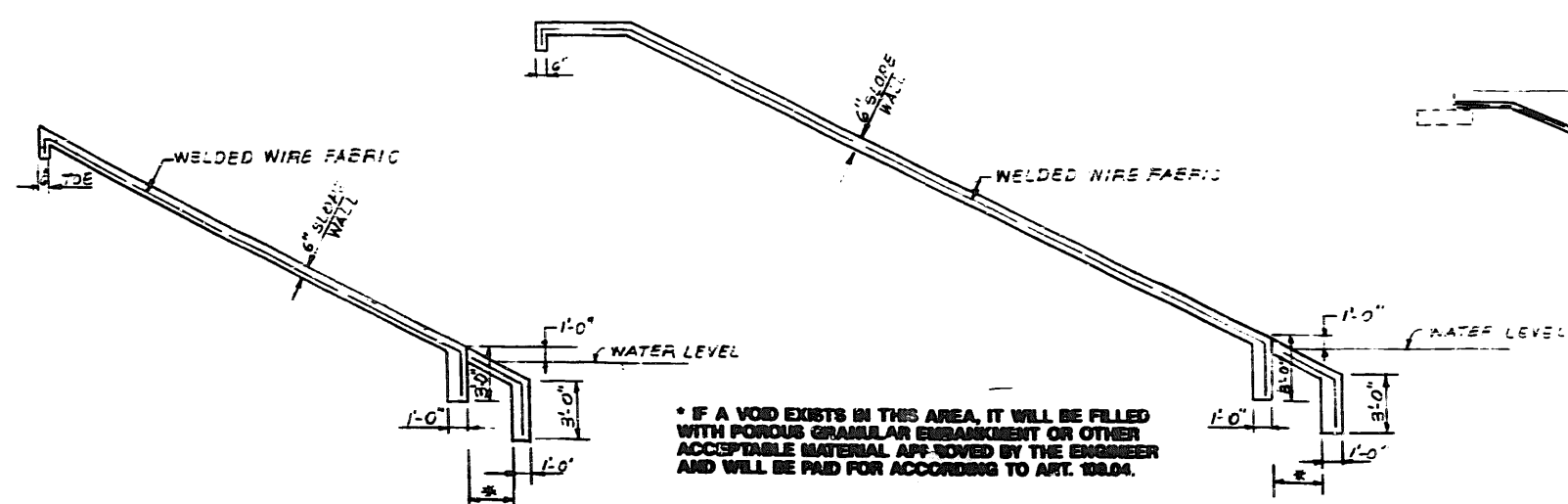
P. & S. NO.	SECTION	COUNTY	FED. AID DIST.	SHEET NO.
VAR 2001-0881	WILL		6	4
STA.	TO STA.			
FED. ROAD DIST. NO. 7	ILLINOIS	FED. AID PROJECT		



PLAN



PLAN

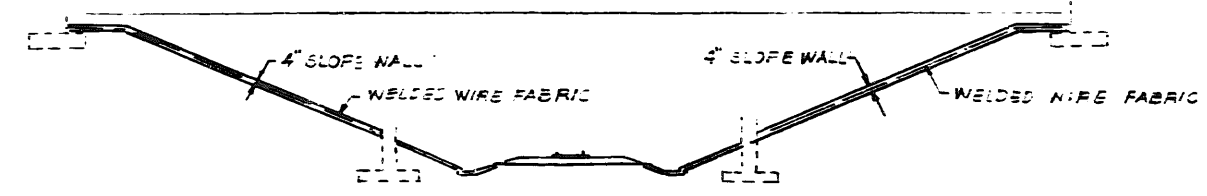


SECTION A-A

SECTION B-B

LOCATION 1 & 2  
I-80 (EB & WB) OVER DUPAGE RIVER

\* IF A VOID EXISTS IN THIS AREA, IT WILL BE FILLED WITH POROUS GRANULAR EMBANKMENT OR OTHER ACCEPTABLE MATERIAL APPROVED BY THE ENGINEER AND WILL BE PAID FOR ACCORDING TO ART. 108.04.



LOCATION 3 & 4  
I-57 (SB & NB) OVER ABANDONED RR

NOTE: MATCHED AREAS INDICATE LOCATIONS OF SLOPEWALL REPAIR. VOIDS UNDER REPAIR LOCATIONS TO BE BACKFILLED WITH POROUS GRANULAR EMBANKMENT, SUBGRADE.

REVISIONS	
NAME	DATE

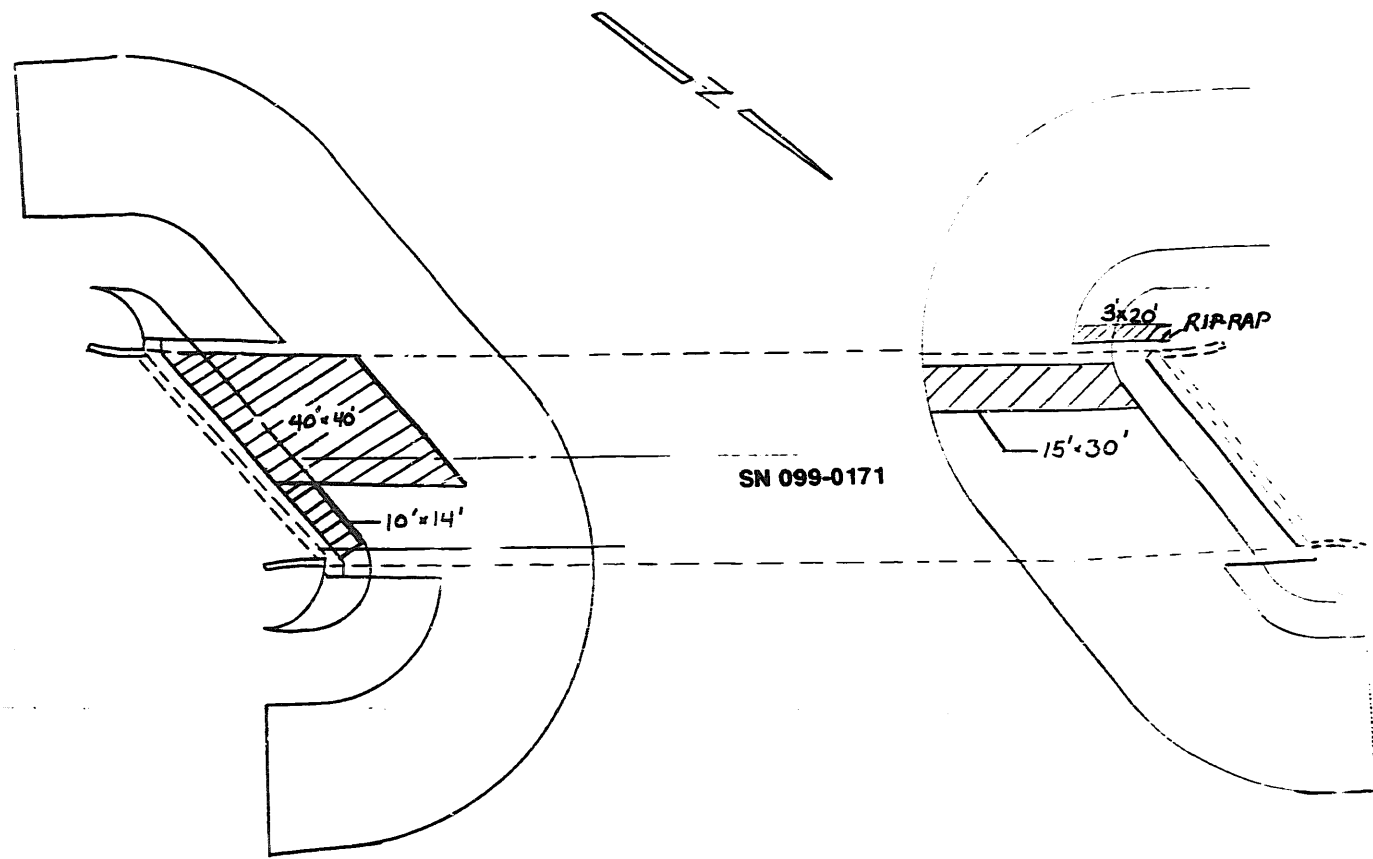
ILLINOIS DEPARTMENT OF TRANSPORTATION

LOCATION 1 & 2  
I-80 SN 099-0040 SN 099-0041  
LOCATION 3 & 4  
I-57 SN 099-0038 SN 099-0039

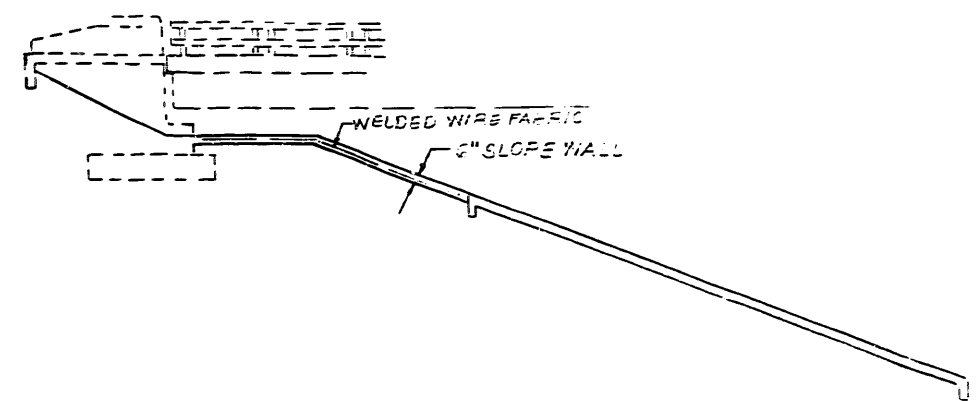
SCALE: VERT. 1"=10'  
HORIZ. 1"=40'

DRAWN BY: [Signature]

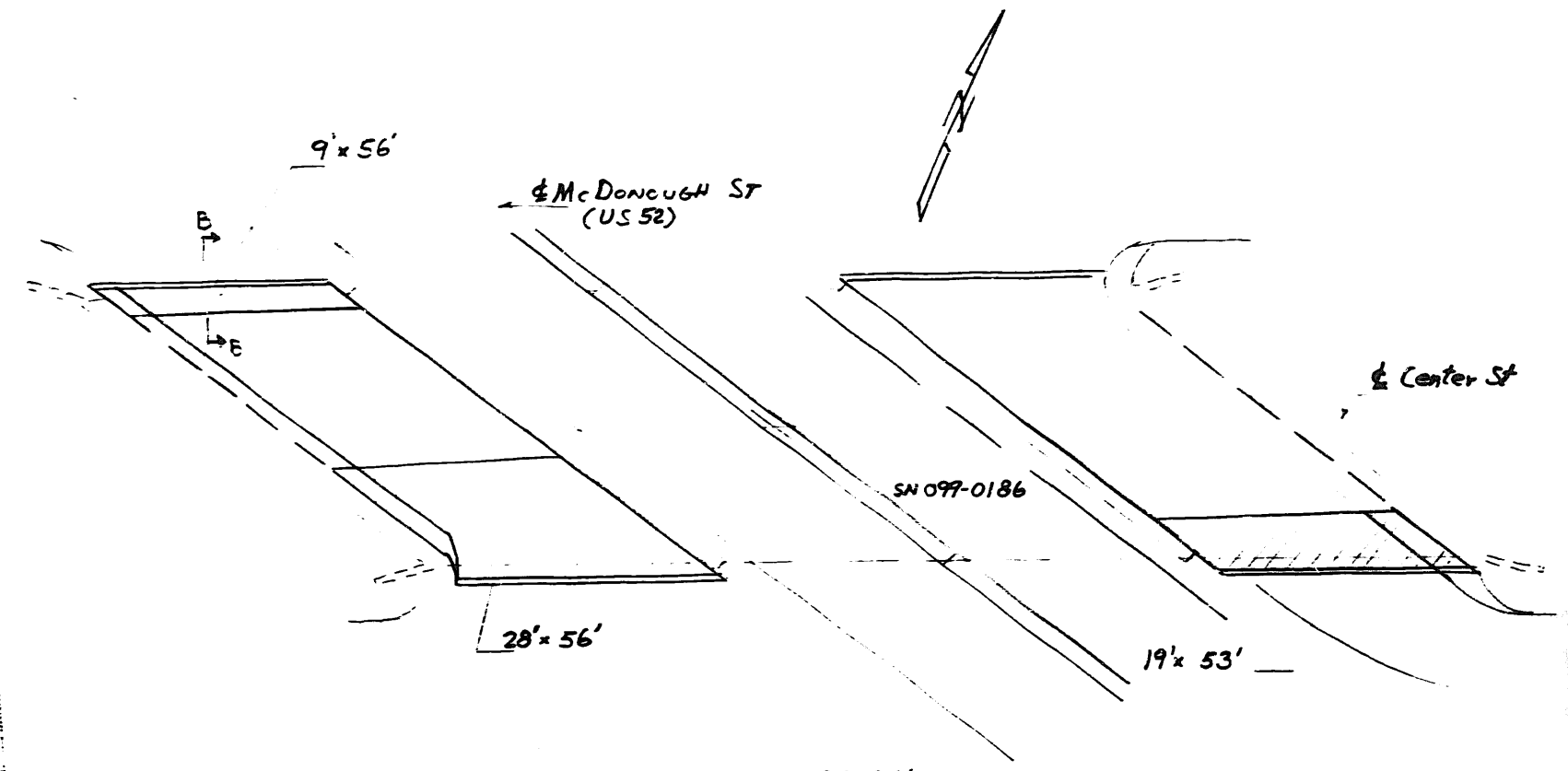
SECTION	COUNTY	TOTAL SHEETS	SHEET NO.
2001-0831	WILL	6	5
STATION		TO STA	
FED ROAD DIST NO 1		ALIGN	FED AID PROJECT



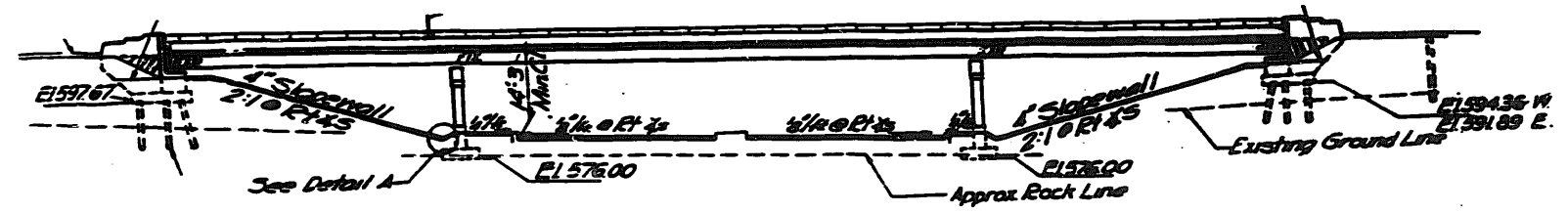
PLAN  
LOCATION 5



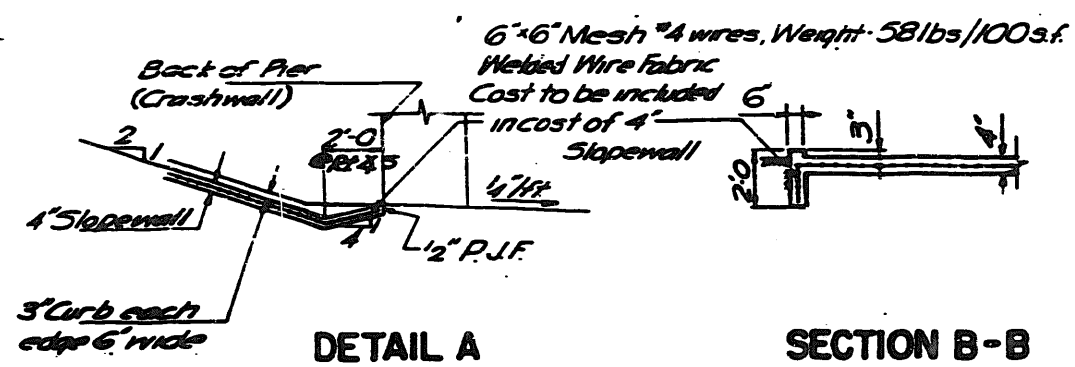
ELEVATION



PLAN  
(LOCATION 6)



ELEVATION



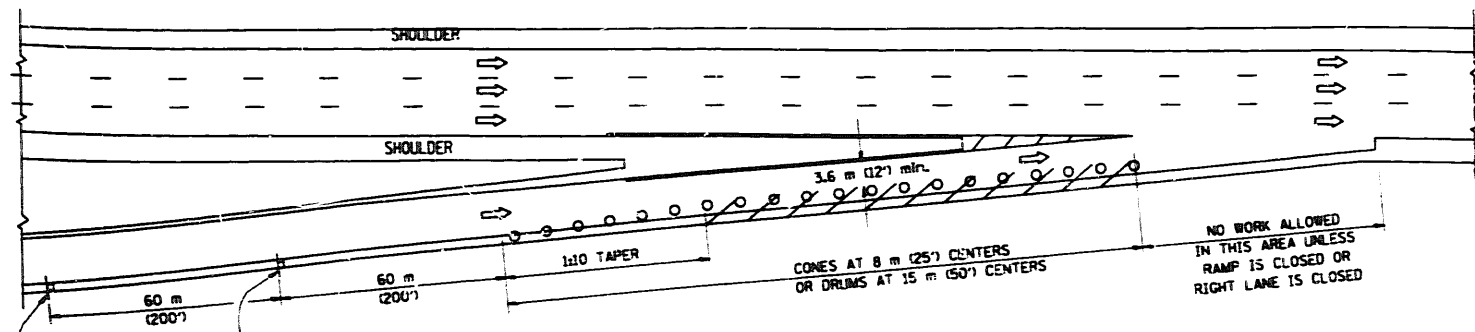
DETAIL A

SECTION B-B

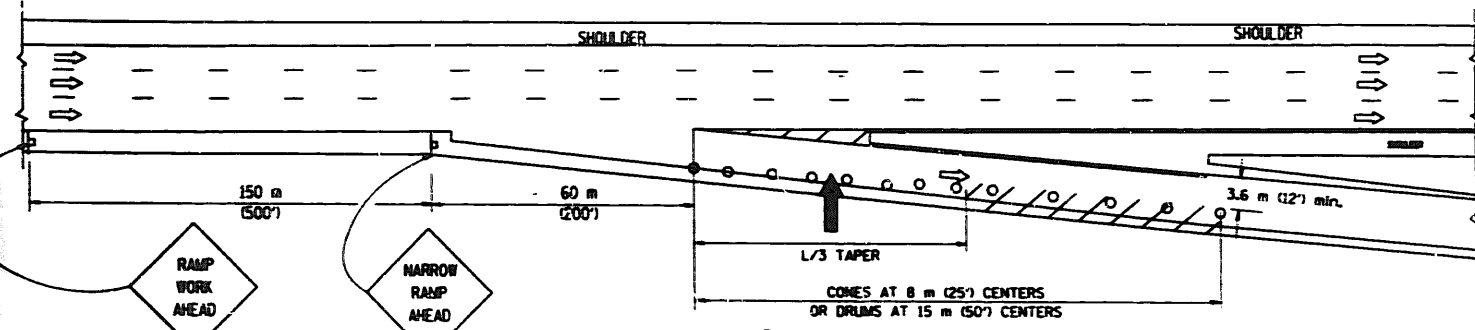
REVISIONS	
NAME	DATE
R78	7/8/4

ILLINOIS DEPARTMENT OF TRANSPORTATION  
**LOCATION 5**  
 IL 113 OVER HORSE CREEK  
**LOCATION 6**  
 CENTER ST. OVER US 52  
 SCALE: VERT. \_\_\_\_\_  
 HORIZ. \_\_\_\_\_  
 DRAWN BY \_\_\_\_\_

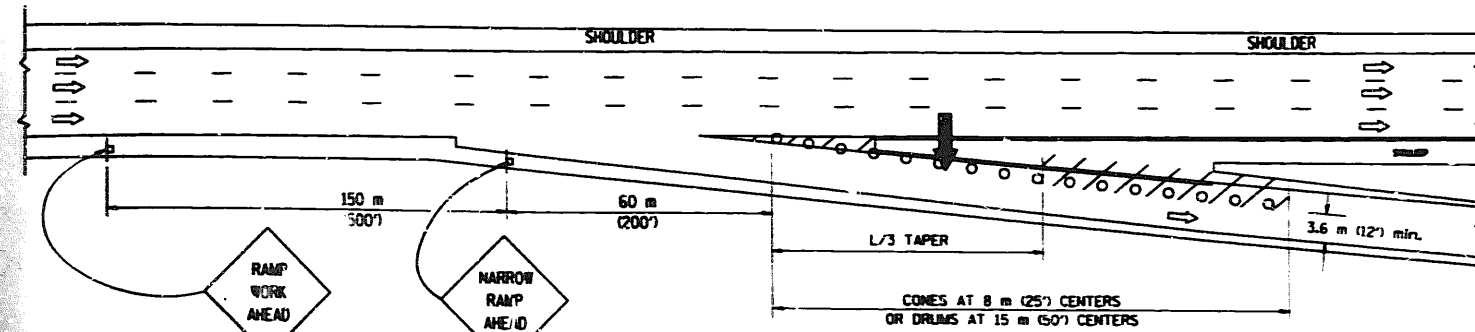
# PARTIAL RAMP CLOSURE DETAILS



TYPICAL ENTRANCE RAMP



TYPICAL EXIT RAMP



TYPICAL EXIT RAMP

### SYMBOLS

- ARROWBOARD
- WORK AREA
- 450 x 450 (18 x 18) MINIMUM ORANGE FLAG
- SIGN ON PORTABLE OR PERMANENT SUPPORT
- FLAGGER WITH CONTROL SIGN
- DRUM WITH MONO-DIRECTIONAL STEADY BURNING LIGHT
- CONES - 700 (28) IN HEIGHT

### GENERAL

1. THE "L" DISTANCE EQUALS:
 

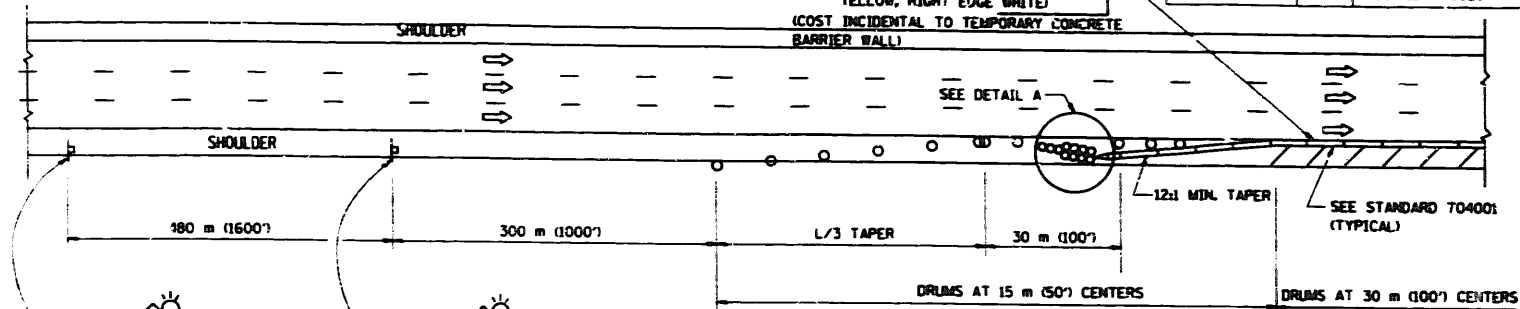
SPEED LIMIT	FORMULAS
80 km/h (45 mph) OR GREATER	METRIC: $L = 0.6S(S+MS)$ ENGLISH: $L = WS(S+MS)$
	W = WIDTH OF OFFSET IN METERS (FEET) S = NORMAL POSTED SPEED KM/H (MPH)
2. PLASTIC DRUMS WITH HIGH PERFORMANCE REFLECTIVE SHEETING AND STEADY BURNING LIGHTS ARE REQUIRED FOR ALL NIGHTTIME CLOSURES.
3. ALL SIGNS SHALL BE POST MOUNTED IF THE CLOSURE TIME EXCEEDS FOUR DAYS.
4. FLASHING LIGHTS SHALL BE USED DURING THE HOURS OF DARKNESS AND SHALL BE INSTALLED ABOVE THE FIRST TWO SETS OF SIGNS.

### NOTES

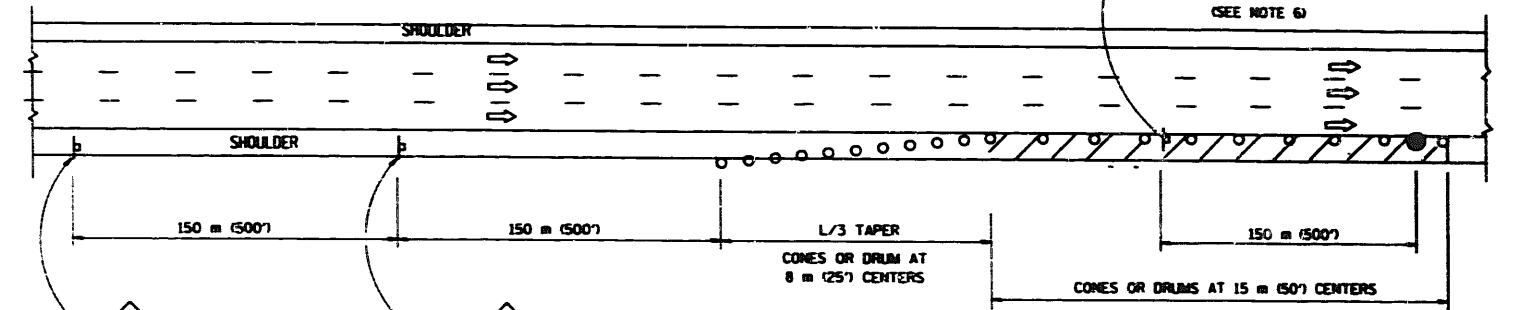
5. THE SAND MODULE IMPACT ATTENUATOR, TEMPORARY IS NOT REQUIRED WHEN THE TEMPORARY BARRIER END SECTION IS OUTSIDE THE CLEAR ZONE OR IS TIED INTO THE EXISTING GUARDRAIL.
6. THE FLAGGER AND FLAGGER SIGN ARE REQUIRED AT THE ABOVE WORK SITES WHEN:
  - a. FOUR OR MORE WORK VEHICLES ENTER THE TRAFFIC LANES IN A ONE HOUR PERIOD.
  - b. THE WORK ACTIVITY REQUIRES FREQUENT ENCROACHMENT INTO THE LANE OPEN TO TRAFFIC.
 THE FLAGGER SHALL BE STATIONED APPROXIMATELY 30 m (100') TO 60 m (200') IN ADVANCE OF THE WORKERS.
7. AUTHORIZATION FROM THE DISTRICT'S BUREAU OF TRAFFIC IS REQUIRED FOR ALL FREEWAY CLOSURES.

# SHOULDER CLOSURE DETAILS

F.A. RTE.	SECTION	COUNTY	TOTAL SHEETS	SHEET NO.
VAR 2001-083J	MILL		6	6
STA.	TO STA.			
FED. ROAD DIST. NO.	ILLINOIS		FED. AID PROJECT	

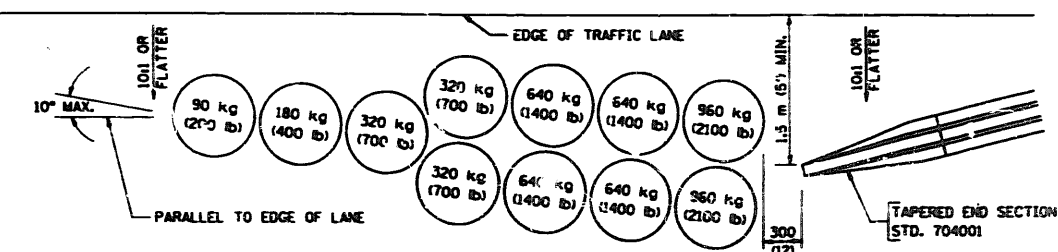


PERMANENT SHOULDER CLOSURE



DAYTIME SHOULDER CLOSURE

THIS DETAIL IS USED WHERE:  
1. VEHICLES, EQUIPMENT, WORKERS OR THEIR ACTIVITIES ENCROACH IN AN AREA CLOSER THAN 4.5 m (15') TO THE EDGE OF PAVEMENT FOR A PERIOD IN EXCESS OF 15 MINUTES.



DETAIL "A"  
SAND MODULE IMPACT ATTENUATOR, TEMPORARY  
(SEE NOTE 5)

ALL DIMENSIONS ARE IN MILLIMETERS (INCHES) UNLESS OTHERWISE SHOWN

ILLINOIS DEPARTMENT OF TRANSPORTATION  
TRAFFIC CONTROL DETAILS  
FOR FREEWAY  
SHOULDER CLOSURES  
PARTIAL RAMP CLOSURES

REVISIONS	
NAME	DATE
DWS	11/96

SCALE: NONE  
DRAWN BY: [blank]  
CHECKED BY: DWS