

STATE OF ILLINOIS
DEPARTMENT OF TRANSPORTATION

F.A.S. RTE.	SECTION	COUNTY	TOTAL SHEETS	SHEET NO.
819	101CR-1	WASHINGTON	19	1
CONTRACT NO. 76M90				
ILLINOIS FED. AID PROJECT				

- INDEX OF SHEETS**
- 1 COVER SHEET
 - 2 HIGHWAY STANDARDS, GENERAL NOTES, AND COMMITMENTS
 - 3-5 SUMMARY OF QUANTITIES
 - 6 TYPICAL SECTIONS
 - 7-8 SCHEDULE OF QUANTITIES
 - 9 IDOT CONTROL POINTS & BENCHMARKS TIE IN POINTS
 - 10 CENTERLINE ALIGNMENT TIE IN POINTS
 - 11 PLAN & PROFILE
 - 12 EROSION CONTROL PLAN
 - 13 ROAD CLOSURE PLAN / DETOUR PLAN
 - 14 TYPICAL APPLICATION OF ROAD CLOSURE
 - 15 GENERAL PLAN AND ELEVATION
 - 16-17 BOX CULVERT APRON DETAILS
 - 18 BORING LOGS
 - 19 CROSS SECTIONS

**PROPOSED
HIGHWAY PLANS**

**FAS ROUTE 819 (IL-177)
SECTION 101CR-1
PROJECT HBFP-IGV1(607)
CULVERT REPLACEMENT
WASHINGTON COUNTY**

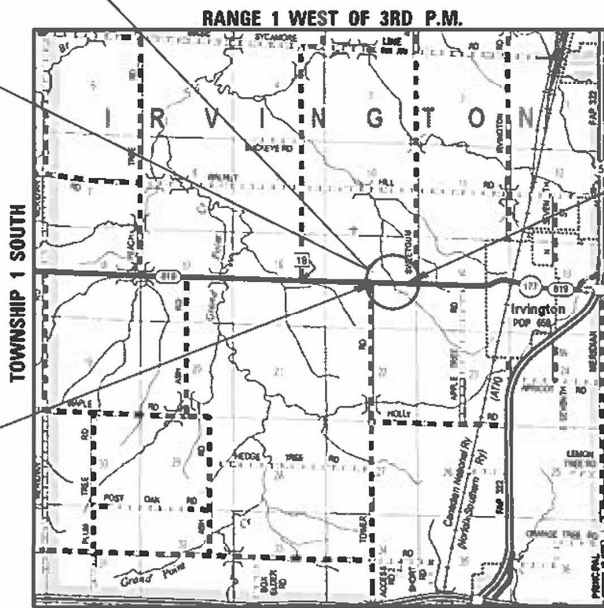
C-98-032-20



FUNCTIONAL CLASSIFICATION: MAJOR COLLECTOR
2019 ADT = 2200 (ACTUAL)
2024 ADT = 2400 (ESTIMATED)
2044 ADT = 3200 (ESTIMATED)
SU = 4.5% MU = 5.0%
DIRECTIONAL DISTRIBUTION = 50/50
DHV = 330

PROPOSED STRUCTURE
LAT: 38.43929163 LONG: -89.18661197
S.N. 095-2529

EXISTING STRUCTURE
LAT: 38.43929163 LONG: -89.18661197
S.N. 095-2496 BUILT IN 1928 AS A SINGLE
BARREL 8'-0" X 8'-0" CONCRETE BOX CULVERT
WITH NO SKEW. THE OUT TO OUT HEADWALL
LENGTH IS 41'-8".



**PROJECT ENDS
STA. 459 + 39
LAT: 38.43928611
LONG: -89.18656111**

**PROJECT BEGINS
STA. 458 + 79
LAT: 38.43930556
LONG: -89.18699444**

MAP NOT TO SCALE
LOCATION MAP

GROSS LENGTH = 60.00 FT. = 0.0114 MILE
NET LENGTH = 60.00 FT. = 0.0114 MILE

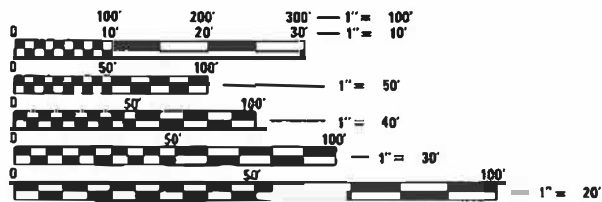


DATE: 8/15/2023
EXPIRES 11/30/23

STATE OF ILLINOIS
DEPARTMENT OF TRANSPORTATION

SUBMITTED August 24 2023
Gregory B. Gerardy REGIONAL ENGINEER
October 13, 2023
Steph M. Smith ENGINEER OF DESIGN AND ENVIRONMENT
October 13, 2023
Steph M. Smith DIRECTOR OF HIGHWAYS PROJECT IMPLEMENTATION

**PRINTED BY THE AUTHORITY
OF THE STATE OF ILLINOIS**



FULL SIZE PLANS HAVE BEEN PREPARED USING STANDARD ENGINEERING SCALES. REDUCED SIZED PLANS WILL NOT CONFORM TO STANDARD SCALES. IN MAKING MEASUREMENTS ON REDUCED PLANS, THE ABOVE SCALES MAY BE USED.

J.U.L.I.E.
JOINT UTILITY LOCATION INFORMATION FOR EXCAVATORS
1-800-892-0123
OR 811

PROJECT ENGINEER: BILLIE OWEN
PROJECT MANAGER: MEIWU AN

CONTRACT NO. 76M90

STANDARDS

000001-08	STANDARD SYMBOLS, ABBREVIATIONS AND PATTERNS
001001-02	AREAS OF REINFORCEMENT BARS
001006-00	DECIMAL OF AN INCH AND OF A FOOT
280001-07	TEMPORARY EROSION CONTROL SYSTEMS
420001-10	PAVEMENT JOINTS
420701-03	PAVEMENT WELDED WIRE REINFORCEMENT
442101-09	CLASS B PATCHES
515001-04	NAME PLATE FOR BRIDGES
630001-12	STEEL PLATE BEAM GUARDRAIL
630101-10	STRONG POST GUARDRAIL ATTACHED TO CULVERT
635001-02	DELINEATORS
701001-02	OFF-RD OPERATIONS, 2L, 2W, MORE THAN 15' AWAY
701006-05	OFF-RD OPERATIONS, 2L, 2W, 15' TO 24" FROM PAVEMENT EDGE
701011-04	OFF-RD OPERATIONS, 2L, 2W, DAY ONLY
701201-05	LANE CLOSURE, 2L, 2W, DAY ONLY FOR SPEEDS ≥ 45MPH
701901-08	TRAFFIC CONTROL DEVICES
720001-01	SIGN PANEL MOUNTING DETAILS
720006-04	SIGN PANEL ERECTION DETAILS
720011-01	METAL POSTS FOR SIGNS, MARKERS & DELINEATORS
728001-01	TELESCOPING STEEL SIGN SUPPORT
729001-01	APPLICATIONS OF TYPES A & B METAL POSTS (FOR SIGNS & MARKERS)
780001-05	TYPICAL PAVEMENT MARKINGS
781001-04	TYPICAL APPLICATIONS RAISED REFLECTIVE PAVEMENT MARKERS
782006-01	GUARDRAIL AND BARRIER WALL REFLECTOR MOUNTING DETAILS
B.L.R.-21-9	TYPICAL APPLICATION OF TRAFFIC CONTROL DEVICES FOR CONSTRUCTION ON RURAL LOCAL HIGHWAYS

GENERAL NOTES

1. THE PROPOSED PAVEMENT MARKINGS SHALL MATCH THE LOCATIONS OF THE EXISTING PAVEMENT MARKINGS, AS DIRECTED BY THE ENGINEER.
2. THE CONTRACTOR SHALL PROVIDE POSITIVE AND ADEQUATE DRAINAGE AT ALL TIMES.
3. THE TWO (2) CHANGEABLE MESSAGE SIGNS REQUIRED FOR THIS PROJECT SHALL BE IN PLACE AND OPERATION TWO (2) WEEKS PRIOR TO ANY LANE CLOSURE AT LOCATIONS DETERMINED BY THE ENGINEER. THE ENGINEER WILL PROVIDE THE MESSAGE TO THE CONTRACTOR FOR THE TWO (2) WEEKS PRIOR TO CONSTRUCTION AND DURING CONSTRUCTION.
4. ALL ELEVATIONS REFER TO THE USGS MEAN SEA LEVEL DATUM, NAVD 88.
5. IF THE CONTRACTOR, FOR HIS CONSTRUCTION ACTIVITY, REMOVES TREES WITHIN THE RIGHT-OF-WAY LIMITS WHICH ARE NOT DESIGNATED ON THE PLANS FOR REMOVAL, I.E. IN ORDER TO GAIN ACCESS TO THE PROJECT SITE; IT WILL BE HIS RESPONSIBILITY TO REPLACE THE TREES AT A 1:1 RATIO. THE TREES WILL BE REPLACED WITH A 1 GALLON NATIVE ILLINOIS TREE SPECIES AND SHALL BE APPROVED BY THE ENGINEER. THE TREE REMOVAL AND TREE REPLACEMENT WILL BE AT THE CONTRACTOR'S EXPENSE, AND NO ADDITIONAL COMPENSATION WILL BE ALLOWED.
6. UTILITIES KNOWN TO HAVE FACILITIES WITHIN THE PROJECT AREA:
 AT&T ILLINOIS
 CLEARWAVE COMMUNICATIONS
 EGYPTIAN TELEPHONE COOP. ASSN.
 TRI-COUNTY ELECTRIC COOPERATIVE, INC
 WASHINGTON COUNTY

COMMITMENTS

1. TREES THREE (3) INCHES IN DIAMETER AT BREAST HEIGHT SHALL NOT BE CLEARED FROM APRIL 1ST THROUGH SEPTEMBER 30TH OF ANY GIVEN YEAR.
2. ALL LANES OF IL ROUTE 177 SHALL BE OPEN TO TRAFFIC DURING THE 2024 SOLAR ECLIPSE FROM 7:00 A.M. ON SATURDAY APRIL 6TH, 2024 THROUGH 10:00 P.M. ON MONDAY APRIL 8TH, 2024.

ADT			
ROUTE	FAS 819 (IL 177)	ADT (CONST YR)	2400
SECTION	101CR-1	MU %	5
COUNTY	WASHINGTON	SU %	4.5
CONTRACT	76M90	20 YR. ESAL'S	0.79
DESCRIPTION	CULVERT REPLACEMENT - IL 177 AT W TRIBUTARY TO GRAND POINT CREEK 4.7 MILE EAST OF HOYLETON - SN 095-2496		

PLAN QUANTITIES FOR HOT-MIX ASPHALT ITEMS ARE CALCULATED USING A UNIT WEIGHT OF 112 LBS / SQ YD / INCH
 ANY QCP PAY ITEM THAT HAS A QUANTITY OF 1600 TONS OR LESS WILL HAVE TWO SUBLOTS EACH OF WHICH WILL BE HALF OF THE PLAN QUANTITY OR HALF OF THE ADJUSTED QUANTITY BY THE ENGINEER / TECHNICIAN.

REV. - MS

FILE NAME: S:\PROJECTS\2020\1155D20_IDOTD8DESIGN\CAD_SHEETS\WO_61155D22_WO_6_General_Notes.dgn



USER NAME = greg	DESIGNED = GBG	REVISED =
	CHECKED = DBB	REVISED =
PLOT SCALE = 10.0000' / in.	DRAWN = EDL	REVISED =
PLOT DATE = 8/24/2023	CHECKED = DBB	REVISED =

STATE OF ILLINOIS
 DEPARTMENT OF TRANSPORTATION

HIGHWAY STANDARDS, GENERAL NOTES, AND COMMITMENTS

SHEET NO. 1 OF 1 SHEETS

F.A.S. RTE.	SECTION	COUNTY	TOTAL SHEETS	SHEET NO.
819	101CR-1	WASHINGTON	19	2
WHA# 1155D20			CONTRACT NO. 76M90	
ILLINOIS FED. AID PROJECT				

SUMMARY OF QUANTITIES

PAY CODE	PAY ITEM	UNIT	TOTAL QUANTITY	CONSTRUCTION CODE 80% FED / 20% STATE	
				CULVERT REPLACEMENT	
				0004	RURAL
20300100	CHANNEL EXCAVATION	CU YD	514	514	
20400800	FURNISHED EXCAVATION	CU YD	72	72	
25000210	SEEDING, CLASS 2A	ACRE	0.10	0.10	
25000400	NITROGEN FERTILIZER NUTRIENT	POUND	9	9	
25000500	PHOSPHORUS FERTILIZER NUTRIENT	POUND	9	9	
25000600	POTASSIUM FERTILIZER NUTRIENT	POUND	9	9	
25100630	EROSION CONTROL BLANKET	SQ YD	373	373	
28100107	STONE RIPRAP, CLASS A4	SQ YD	79	79	
28100109	STONE RIPRAP, CLASS A5	SQ YD	91	91	
28200200	FILTER FABRIC	SQ YD	170	170	
35102400	AGGREGATE BASE COURSE, TYPE B 12"	SQ YD	160	160	
44000100	PAVEMENT REMOVAL	SQ YD	160	160	
44200050	WELDED WIRE REINFORCEMENT	SQ YD	160	160	
44200976	CLASS B PATCHES, TYPE IV, 10 INCH	SQ YD	160	160	

REV. - MS

FILE NAME: S:\PROJECTS\2020\1155D20_IDOTD8DESIGN\CAD_SHEETS\WO_61155D20_W06_Summary-of-QTY.dgn



USER NAME = greg	DESIGNED = GBG	REVISED =
CHECKED = GFS	REVISIONS =	
PLOT SCALE = 20.0000' / in.	DRAWN = GBG	REVISED =
PLOT DATE = 8/24/2023	CHECKED = GFS	REVISED =

**STATE OF ILLINOIS
DEPARTMENT OF TRANSPORTATION**

SUMMARY OF QUANTITIES

SHEET 01 OF 03 SHEETS

F.A.S. RTE.	SECTION	COUNTY	TOTAL SHEETS	SHEET NO.
819	101CR-1	WASHINGTON	19	3
WHA# 1155D20			CONTRACT NO. 76M90	
ILLINOIS FED. AID PROJECT				

SUMMARY OF QUANTITIES

PAY CODE	PAY ITEM	UNIT	TOTAL QUANTITY	CONSTRUCTION CODE 80% FED / 20% STATE	
				CULVERT REPLACEMENT	
				0004	RURAL
44201299	DOWEL BARS 1 1/2"	EACH	30	30	
44213204	TIE BARS 3/4"	EACH	36	36	
48101500	AGGREGATE SHOULDERS, TYPE B 6"	SQ YD	120	120	
50100100	REMOVAL OF EXISTING STRUCTURES	EACH	1	1	
50200100	STRUCTURE EXCAVATION	CU YD	372	372	
51500100	NAME PLATES	EACH	1	1	
54001001	BOX CULVERT END SECTIONS, CULVERT NO. 1	EACH	2	2	
* 63000007	STEEL PLATE BEAM GUARDRAIL, TYPE B, 6 FOOT POSTS	FOOT	68	68	
* 63000030	STRONG POST GUARDRAIL ATTACHED TO CULVERT	FOOT	52	52	
63200310	GUARDRAIL REMOVAL	FOOT	120	120	
67100100	MOBILIZATION	L SUM	1	1	
70100450	TRAFFIC CONTROL AND PROTECTION, STANDARD 701201	L SUM	1	1	
70107025	CHANGEABLE MESSAGE SIGN	CAL DA	28	28	
* 78001110	PAINT PAVEMENT MARKING - LINE 4"	FOOT	260	260	

* SPECIALTY ITEM

REV. - MS

FILE NAME: S:\PROJECTS\2020\1155D20_IDOTD8DESIGN\CAD_SHEETS\WO_61155D20_W06_Summary-of-QTY.dgn



USER NAME = greg	DESIGNED - GBG	REVISED -
	CHECKED - GFS	REVISED -
PLOT SCALE = 20.0000' / in.	DRAWN - GBG	REVISED -
PLOT DATE = 8/24/2023	CHECKED - GFS	REVISED -

**STATE OF ILLINOIS
DEPARTMENT OF TRANSPORTATION**

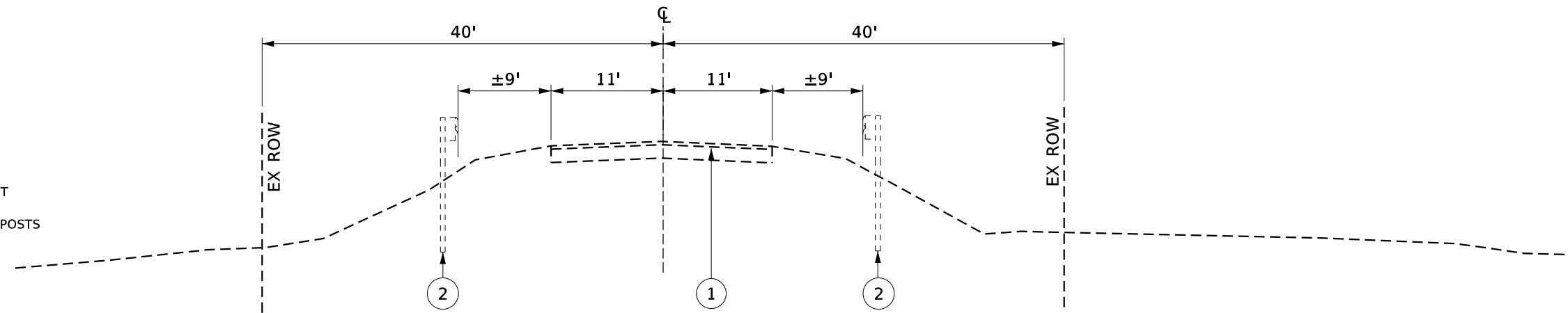
SUMMARY OF QUANTITIES

SHEET 02 OF 03 SHEETS

F.A.S. RTE.	SECTION	COUNTY	TOTAL SHEETS	SHEET NO.
819	101CR-1	WASHINGTON	19	4
WHA# 1155D20			CONTRACT NO. 76M90	
ILLINOIS FED. AID PROJECT				

LEGEND

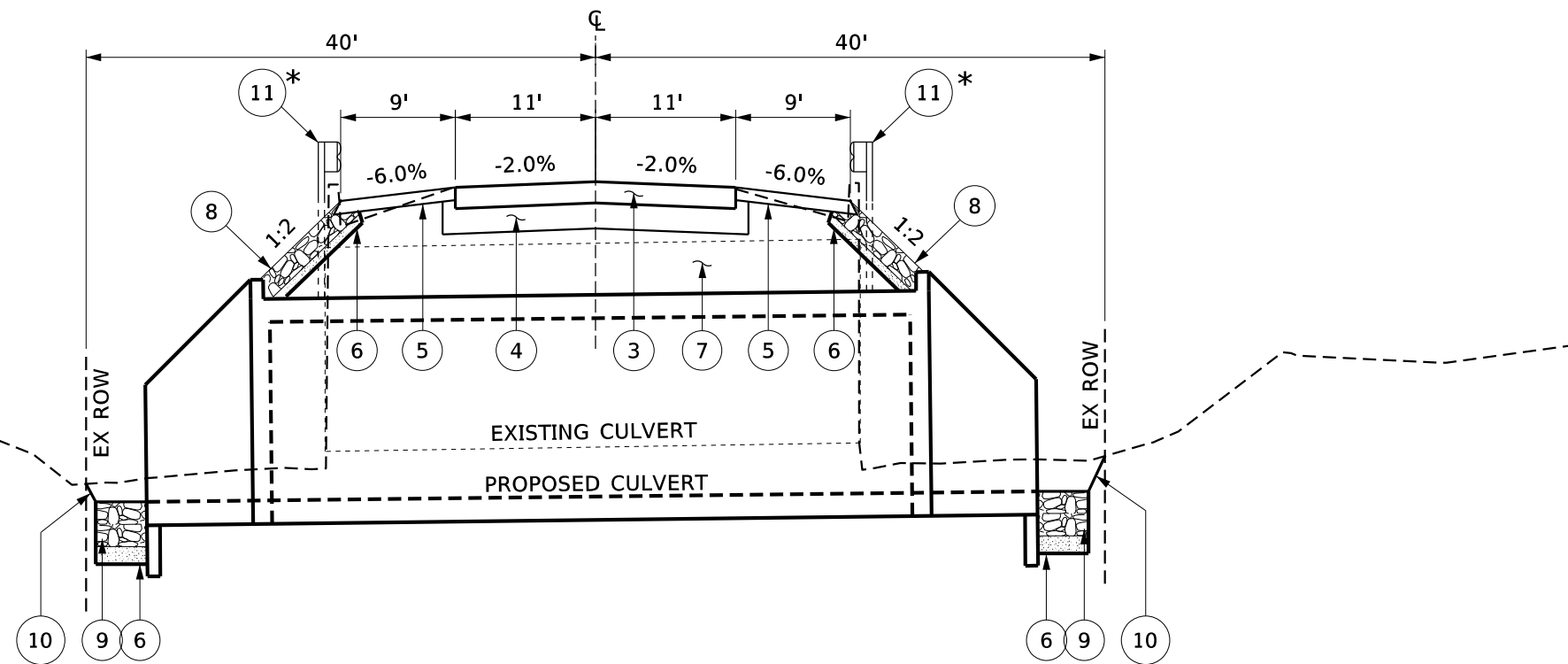
- ① EXISTNG PAVEMENT (IL RTE 177) - 2" HMA / 8" PCC
- ② EXISTNG GUARDRAIL
- ③ CLASS B PATCHES, TYPE IV, 10 INCH
- ④ AGGREGATE BASE COURSE, TYPE B 12"
- ⑤ AGGREGATE SHOULDERS, TYPE B 6"
- ⑥ FILTER FABRIC W/ BEDDING STONE
- ⑦ COMPACTED EARTH FILL
- ⑧ RIPRAP, A4
- ⑨ RIPRAP, A5
- ⑩ PROPOSED FINISHED GRADE LINE
- ⑪ STRONG POST GUARDRAIL ATTACHED TO CULVERT & STEEL PLATE BEAM GUARDRAIL, TYPE B, 6 FOOT POSTS



EXISTING TYPICAL SECTION

* STRONG POST BEAM GUARDRAIL IS ATTACHED TO THE TOP OF THE CULVERT. BETWEEN STA: 258+96 TO 259+22

STEEL PLATE BEAM GUARDRAIL, TYPE B WILL BE INSTALLED BEYOND THE CULVERT TO CONNECT INTO THE EXISTING GUARDRAIL



PROPOSED TYPICAL SECTION

PROPOSED CULVERT - STA: 258+96.04 TO 259+21.96
 PROPOSED PATCH - STA: 258+79.00 TO 259+39.00

FILE NAME: S:\PROJECTS\2020\1155D20_IDOTD8DESIGN\CAD_SHEETS\WO 6\1155D20_W06_Typical_Sections.dgn



USER NAME = greg	DESIGNED - GBG	REVISED -
	CHECKED - GFS	REVISED -
PLOT SCALE = 13.3333' / in.	DRAWN - GBG	REVISED -
PLOT DATE = 8/24/2023	CHECKED - GFS	REVISED -

STATE OF ILLINOIS
 DEPARTMENT OF TRANSPORTATION

TYPICAL SECTIONS

SHEET NO. 1 OF 1 SHEETS

F.A.S. RTE.	SECTION	COUNTY	TOTAL SHEETS	SHEET NO.
819	101CR-1	WASHINGTON	19	6
WHA# 1155D20			CONTRACT NO. 76M90	
ILLINOIS FED. AID PROJECT				

SCHEDULE OF QUANTITIES

SEEDING & RESTORATION							
			SEEDING, CLASS 2A	NITROGEN FERTILIZER NUTRIENT	PHOSPHORUS FERTILIZER NUTRIENT	POTASSIUM FERTILIZER NUTRIENT	EROSION CONTROL BLANKET
ROAD	STATION / OFFSET	REMARKS	ACRE	POUND	POUND	POUND	SQ YD
IL RTE 177	LT 258+70.00	90 LBS PER ACRE	0.03	2.7	2.7	2.7	103
IL RTE 177	RT 258+70.00	90 LBS PER ACRE	0.03	2.7	2.7	2.7	104
IL RTE 177	LT 259+45.00	90 LBS PER ACRE	0.02	1.8	1.8	1.8	87
IL RTE 177	RT 259+45.00	90 LBS PER ACRE	0.02	1.8	1.8	1.8	79
PROJECT TOTAL			0.10	9.0	9.0	9.0	373

PAVEMENT & ROADWAY IMPROVEMENTS									
			AGGREGATE BASE COURSE, TYPE B 12"	PAVEMENT REMOVAL	WELDED WIRE REINFORCEMENT	CLASS B PATCHES, TYPE IV, 10 INCH	DOWEL BARS 1 1/2"	TIE BARS 3/4"	AGGREGATE SHOULDERS, TYPE B 6"
ROAD	STATION / OFFSET	REMARKS	SQ YD	SQ YD	SQ YD	SQ YD	EACH	EACH	SQ YD
IL RTE 177	258+79.00 to 259+39.00		160	160	160	160		20	
IL RTE 177	LT 258+79.00 to 259+39.00						15	8	60
IL RTE 177	RT 258+79.00 to 259+39.00						15	8	60
PROJECT TOTAL			160	160	160	160	30	36	120

GUARDRAIL IMPROVEMENTS						
			STRONG POST GUARDRAIL ATTACHED TO CULVERT	STEEL PLATE BEAM GUARDRAIL, TYPE B, 6 FOOT POSTS	GUARDRAIL REMOVAL	GUARDRAIL REFLECTORS, TYPE A
ROAD	STATION / OFFSET	REMARKS	FOOT	FOOT	FOOT	EACH
IL RTE 177	LT 258+79.00 to 259+39.00				60	2
IL RTE 177	RT 258+79.00 to 259+39.00				60	2
IL RTE 177	LT 258+79 to 258+96			17		
IL RTE 177	LT 258+96 to 259+22		26			
IL RTE 177	LT 259+22 to 259+39			17		
IL RTE 177	RT 258+79 to 258+96			17		
IL RTE 177	RT 258+96 to 259+22		26			
IL RTE 177	RT 259+22 to 259+39			17		
PROJECT TOTAL			52	68	120	4

FILE NAME: S:\PROJECTS\2020\1155D20_IDOTD8DESIGN\CAD_SHEETS\WO_6\1155D20_WO_6_Schedule-of-Qty.dgn



USER NAME = greg	DESIGNED - GBG	REVISED -
	CHECKED - GFS	REVISED -
PLOT SCALE = 2.0000' / in.	DRAWN - GBG	REVISED -
PLOT DATE = 8/24/2023	CHECKED - GFS	REVISED -

**STATE OF ILLINOIS
DEPARTMENT OF TRANSPORTATION**

SCHEDULE OF QUANTITIES

SHEET 01 OF 02 SHEETS

F.A.S. RTE.	SECTION	COUNTY	TOTAL SHEETS	SHEET NO.
819	101CR-1	WASHINGTON	19	7
WHA# 1155D20			CONTRACT NO. 76M90	
ILLINOIS FED. AID PROJECT				

SCHEDULE OF QUANTITIES

PAVEMENT MARKINGS & DELINEATORS				
			PAINT PAVEMENT MARKING - LINE 4"	RAISED REFLECTIVE PAVEMENT MARKER
ROAD	STATION / OFFSET	REMARKS	FOOT	EACH
IL RTE 177	LT 258+69 to 259+59		90	
IL RTE 177	RT 258+69 to 259+59		90	
IL RTE 177	259+09 to 259+59		50	
IL RTE 177	258+69 to 259+59		30	
IL RTE 177	259+36.52			1
PROJECT TOTAL			260	1

EARTHWORK TABLE						
			EARTH EXCAVATION (SPECIAL)	EARTH EXCAVATION ADJUSTED FOR SHRINKAGE 25%	EMBANKMENT	EARTH BALANCE WASTE (+) OR FURNISHED EXCAVATION (-)
ROAD	STATION / OFFSET	REMARKS	CU YD	CU YD	CU YD	CU YD
IL RTE 177	258+63.50 TO 259+54.50	ENTIRE PROJECT AREA	294	220	292	-72
PROJECT TOTAL			294	220	292	-72

FILE NAME: S:\PROJECTS\2020\1155D20_IDOTD8DESIGN\CAD_SHEETS\WO_6\1155D20_WO_6_Schedule-of-Qty.dgn



USER NAME = greg	DESIGNED - GBG	REVISED -
	CHECKED - GFS	REVISED -
PLOT SCALE = 2.0000' / in.	DRAWN - GBG	REVISED -
PLOT DATE = 8/24/2023	CHECKED - GFS	REVISED -

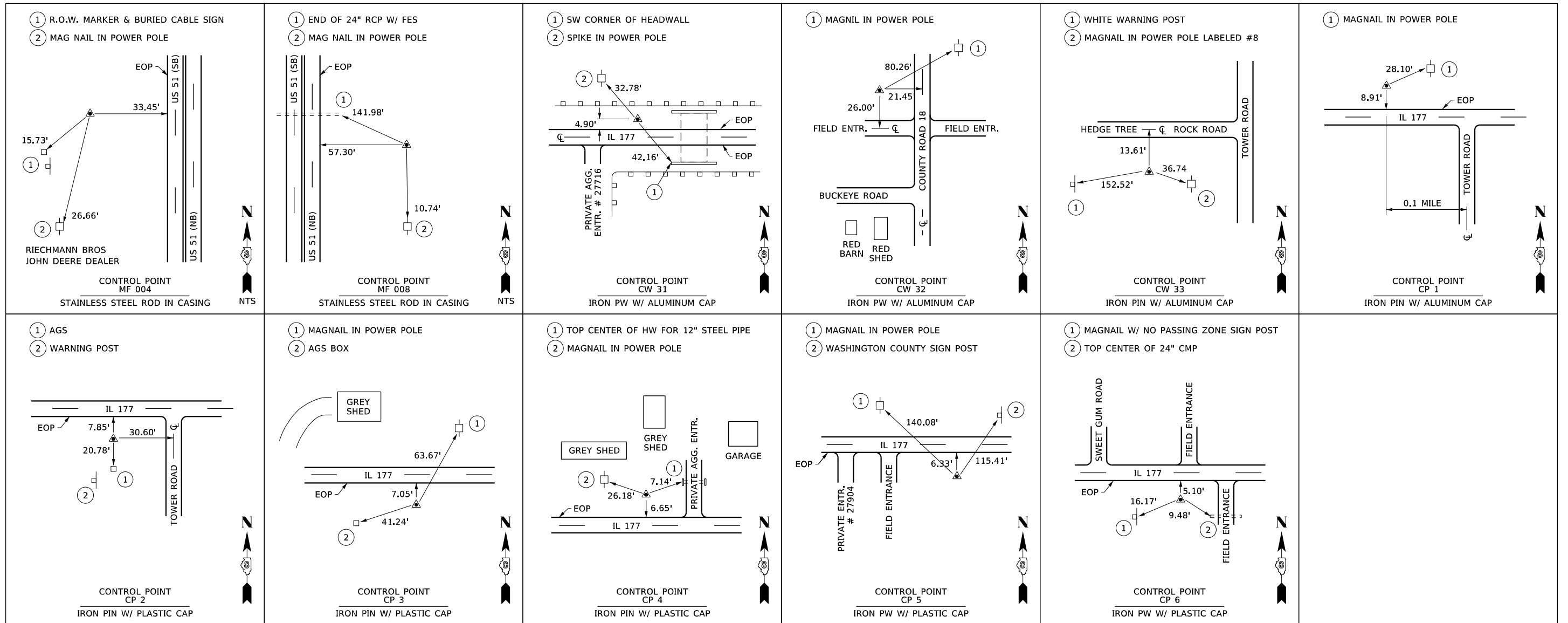
**STATE OF ILLINOIS
DEPARTMENT OF TRANSPORTATION**

SCHEDULE OF QUANTITIES

SHEET 02 OF 02 SHEETS

F.A.S. RTE.	SECTION	COUNTY	TOTAL SHEETS	SHEET NO.
819	101CR-1	WASHINGTON	19	8
WHA# 1155D20			CONTRACT NO. 76M90	
ILLINOIS FED. AID PROJECT				

CONTROL POINTS ALIGNMENT & TIES



IL 177 CONTROL POINTS					
POINT ID	NORTHING	EASTING	ELEVATION	DESCRIPTION	LOCATION
1	87316.7087	152055.3810	490.620	Iron Pin w/ Plastic Cap	2.5 miles west of US Route 51 on IL RTE 177
2	87260.2696	152535.2650	492.832	Iron Pin w/ Plastic Cap	2.5 miles west of US Route 51 on IL RTE 177
3	87238.6369	153127.8807	494.804	Iron Pin w/ Plastic Cap	2.5 miles west of US Route 51 on IL RTE 177
4	87223.4680	154403.3462	504.537	Iron Pin w/ Plastic Cap	2.25 miles west of US Route 51 on IL RTE 177
5	87167.7034	154920.3838	508.882	Iron Pin w/ Plastic Cap	2.0 miles west of US Route 51 on IL RTE 177
6	87145.3154	155522.9968	510.585	Iron Pin w/ Plastic Cap	2.0 miles west of US Route 51 on IL RTE 177
CW31	87246.5894	153795.8848	497.388	Iron Pin w/ Alum Cap	2.25 miles west of US Route 51 on IL RTE 177
CW32	96036.5158	148693.8924	-	Iron Pin w/ Alum Cap	1.5 miles north of IL RTE 177 on CO HWY 18
CW33	76740.1141	150059.6275	-	Iron Pin w/ Alum Cap	2.0 miles south of IL RTE 177 on Tower Rd and 0.5 miles west on Hedge Tree Road
MF 004	94925.7844	165821.9786	-	Stainless Steel Rod in Casing NGS PID DQ1786	1.5 miles north of IL RTE 177 on US Route 51
MF 008	76060.1159	160582.6522	-	Stainless Steel Rod in Casing NGS PID DQ1790	2.4 miles south of IL RTE 177 on US Route 51

BENCHMARKS		
POINT ID	ELEVATION	DESCRIPTION
Z 159	535.690	NGS MONUMENT SET IN TOP OF NE END OF CONCRETE WINGWALL OF THE SOUTH CONCRETE HEADWALL OF CONCRETE BOX CULVERT, 265' SOUTH OF THE CENTERLINE OF IL177, 49' WEST OF THE CENTERLINE OF FIRST ST., 44' EAST OF THE RAILROAD TRACKS, IN IRVINGTON. PID JB1034
Y 159	529.652	NGS MONUMENT SET IN TOP OF AND 0.8' WEST OF THE EAST END OF THE SOUTH CONCRETE HEADWALL OF DOUBLE BOX CULVERT, 29' SOUTH OF THE CENTERLINE OF IL 177, 40' WEST OF THE CENTERLINE OF FIRST ST., 34' EAST OF THE RAILROAD TRACKS, IN IRVINGTON. PID JB1033,
BM 1	522.130	CUT "SQUARE" ON OF EAST HEADWALL FOR A FIELD ENTRANCE, 0.5' FROM SOUTH END OF HEADWALL, 253' WEST OF SN 095-2467, NORTH OF IL 177, 0.1 MILE EAST OF APPLE TREE RD.
BM 2	510.092	CHISELED "X" ON SOUTH BOLT OF FIRE HYDRANT AT THE NORTHWEST QUAD OF THE INTERSECTION OF IL 127 AND SWEETGUM RD.
BM 3	493.761	RR SPIKE IN SOUTH SIDE OF POWER POLE, NORTH OF IL 177, NORTHWEST OF SN 095-2496, 0.2 MILES EAST OF TOWER RD.
BM 4	493.940	RR SPIKE IN SOUTH SIDE OF POWER POLE, NORTH OF IL 177, 0.1 MILES WEST OF TOWER RD.

FILE NAME: S:\PROJECTS\2020\1155D20_IDOT\DESIGN\CAD_SHEETS\WO 6\1155D20_WO6_Alignments&Ties.dgn



USER NAME = greg	DESIGNED - GBG	REVISED -
CHECKED - GFS	REVISED -	
PLOT SCALE = 20,0000' / in.	DRAWN - GBG	REVISED -
PLOT DATE = 8/15/2023	CHECKED - GFS	REVISED -

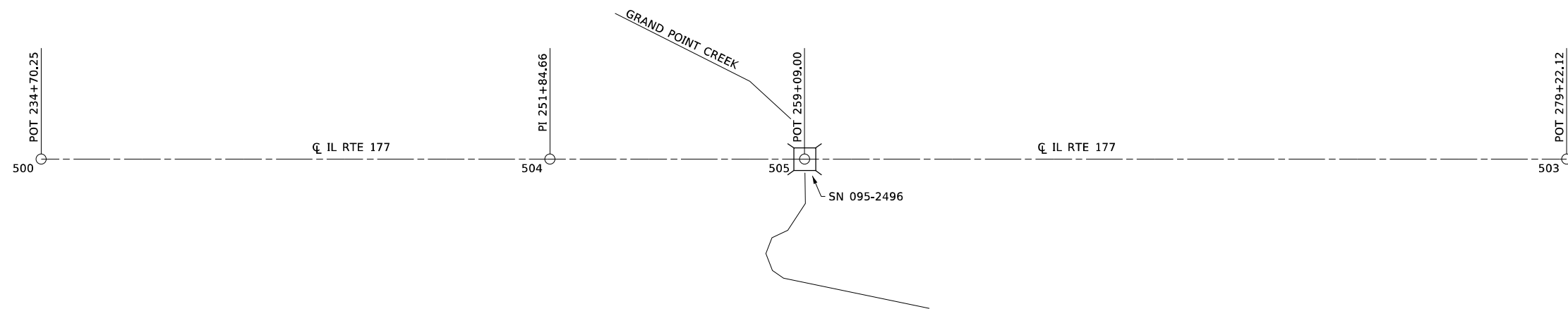
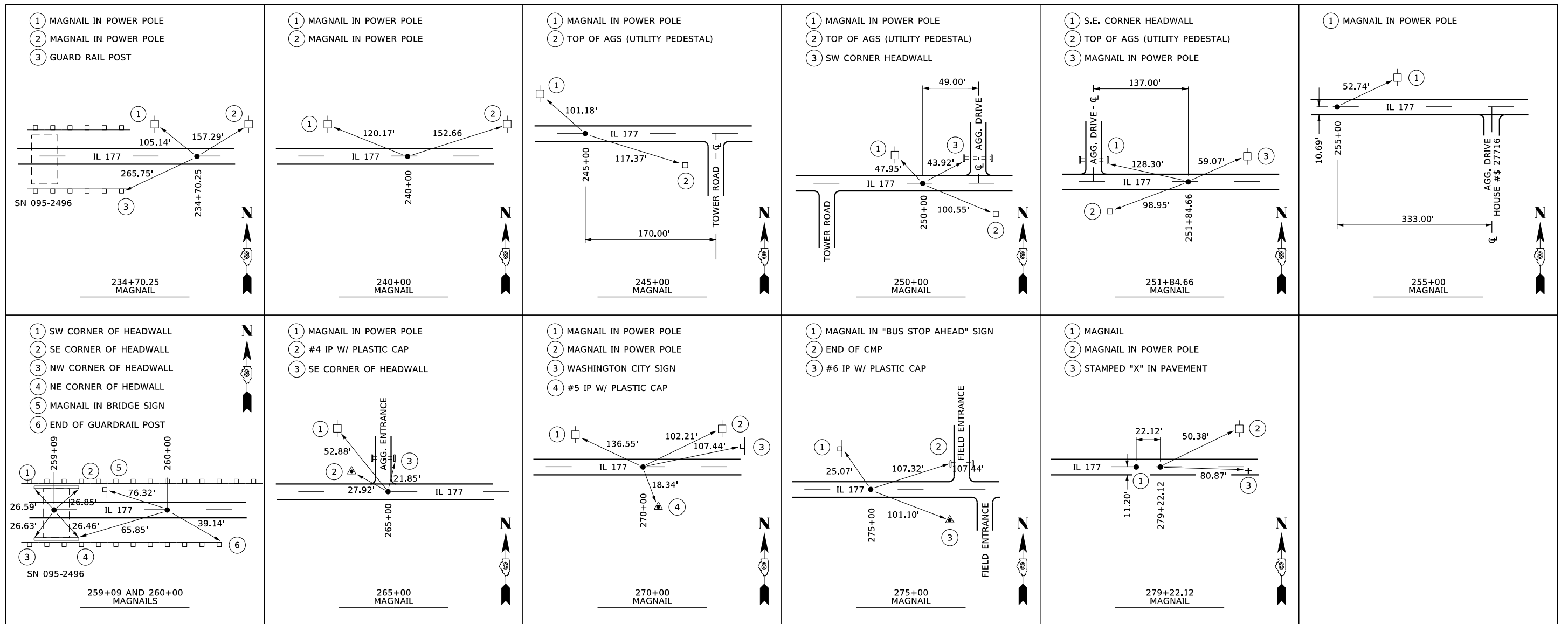
**STATE OF ILLINOIS
DEPARTMENT OF TRANSPORTATION**

**IDOT CONTROL POINTS & BENCHMARKS
TIE IN POINTS**

SCALE: N / A SHEET 1 OF 1 SHEETS

F.A.S. RTE.	SECTION	COUNTY	TOTAL SHEETS	SHEET NO.
819	101CR-1	WASHINGTON	19	9
WHA# 1155D20			CONTRACT NO. 76M90	
ILLINOIS FED. AID PROJECT				

CENTERLINE ALIGNMENT & TIES



FILE NAME: S:\PROJECTS\2020\1155D20_IDOTD8DESIGN\CAD_SHEETS\WO 6\1155D20_W06_Alignments&Ties.dgn



USER NAME = greg	DESIGNED - GBG	REVISED -
PLOT SCALE = 20,0000' / in.	CHECKED - GFS	REVISED -
PLOT DATE = 8/15/2023	DRAWN - GBG	REVISED -
	CHECKED - GFS	REVISED -

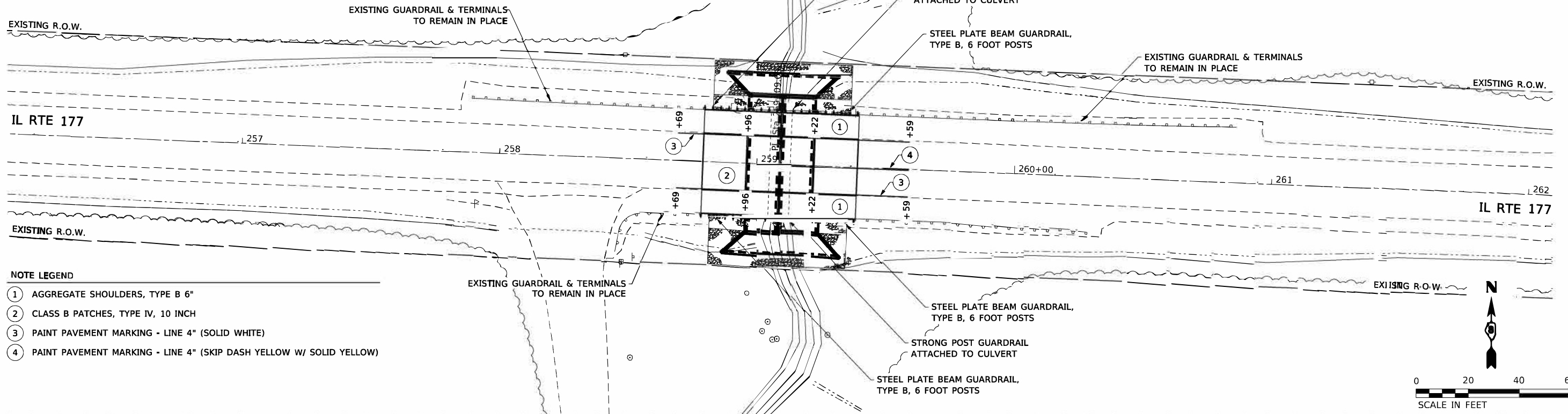
**STATE OF ILLINOIS
DEPARTMENT OF TRANSPORTATION**

CENTERLINE ALIGNMENT TIE IN POINTS	
SCALE: N / A	SHEET 1 OF 1 SHEETS

F.A.S. RTE.	SECTION	COUNTY	TOTAL SHEETS	SHEET NO.
819	101CR-1	WASHINGTON	19	10
WHA# 1155D20		CONTRACT NO. 76M90		
ILLINOIS FED. AID PROJECT				

NOTES:

THE EXISTING GUARDRAIL IS TO REMAIN IN PLACE, THE CONTRACTOR SHALL REMOVE GUARDRAIL AS NEEDED FOR CULVERT REMOVAL AND CONSTRUCTION. THE GUARDRAIL SHALL BE REPLACED AS SPECIFIED AND CONNECT TO THE EXISTING GUARDRAIL SYSTEM.

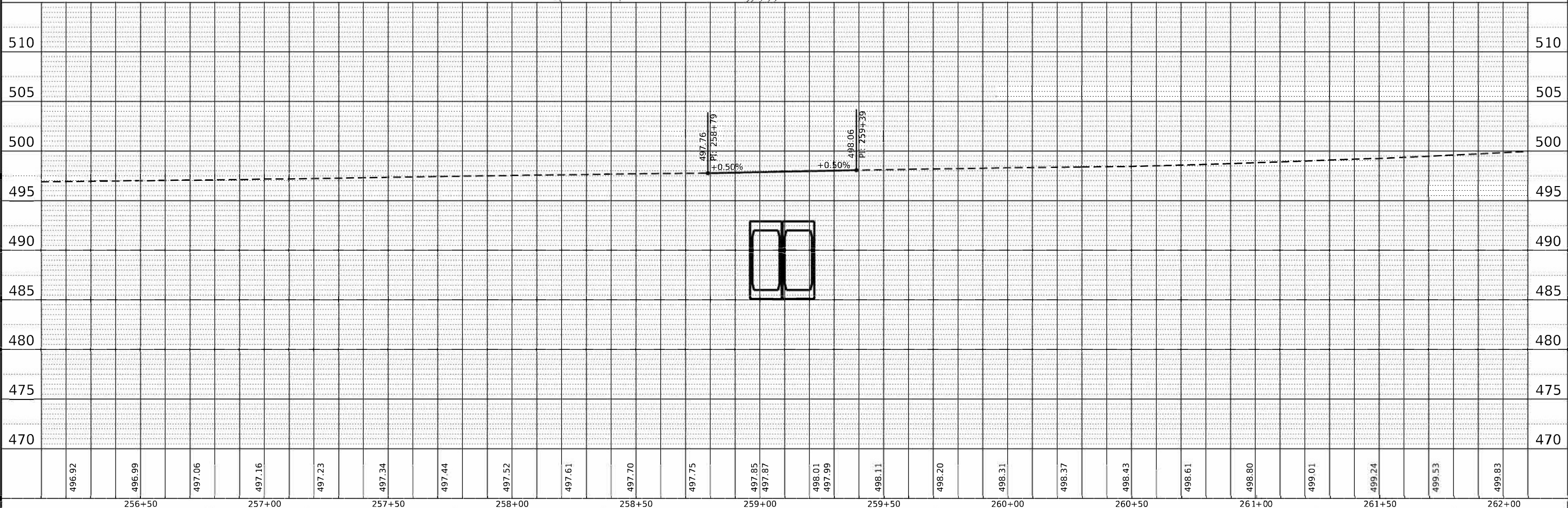


NOTE LEGEND

- ① AGGREGATE SHOULDERS, TYPE B 6"
- ② CLASS B PATCHES, TYPE IV, 10 INCH
- ③ PAINT PAVEMENT MARKING - LINE 4" (SOLID WHITE)
- ④ PAINT PAVEMENT MARKING - LINE 4" (SKIP DASH YELLOW W/ SOLID YELLOW)

PLAN	SURVEYED	DATE
	PLOTTED	
	GRADES CHECKED	
	STRUCTURE NOTATIONS CHND	
	NO.	

PROFILE	SURVEYED	DATE
	PLOTTED	
	GRADES CHECKED	
	STRUCTURE NOTATIONS CHND	
	NO.	



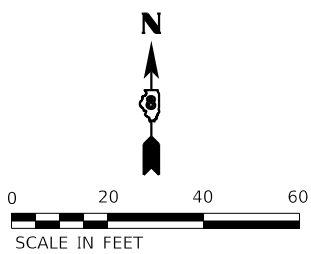
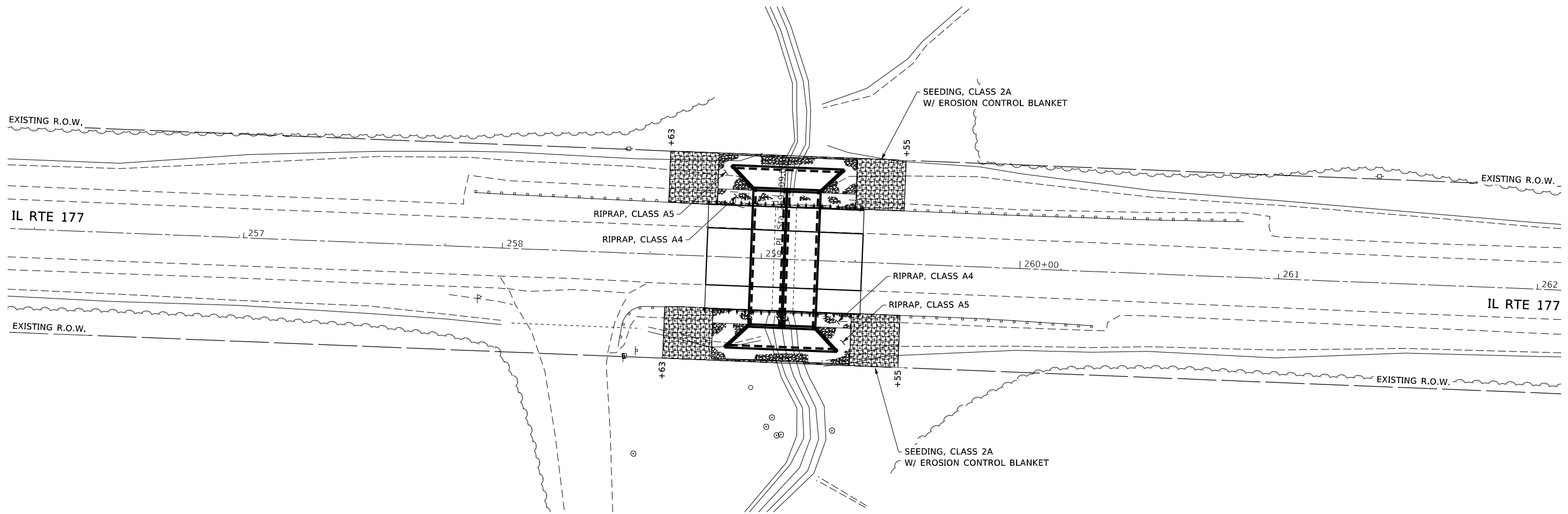
FILE NAME: S:\PROJECTS\2020\1155D20_IDOT\BDESIGN\CAD_SHEETS\W06_61155D20_W06_Plan&Profile.dgn

<p>WILLET HOFMANN & ASSOCIATES INC. ENGINEERING ARCHITECTURE LAND SURVEYING 809 EAST 2ND STREET, DIXON, IL 61021-0367 T: 815-284-3381 DESIGN FIRM: # 84-000918</p>	USER NAME = greg	DESIGNED = GG	REVISED =	<p align="center">STATE OF ILLINOIS DEPARTMENT OF TRANSPORTATION</p>	<p align="center">PLAN & PROFILE</p>	F.A.S. RTE. = 819	SECTION = 101CR-1	COUNTY = WASHINGTON	TOTAL SHEETS = 19	SHEET NO. = 11
	PLOT SCALE = 40.0000' / in.	CHECKED = GFS	REVISED =			SCALE: SHEET 01 OF 01 SHEETS STA. TO STA.	WHA# 1155D20	CONTRACT NO. 76M90	ILLINOIS FED. AID PROJECT	
	PLOT DATE = 8/24/2023	DRAWN = GG	REVISED =							
		CHECKED = GFS	REVISED =							

PLAN	SURVEYED	DATE
	PLOTTED	BY
NOTE BOOK NO.	ALIGNMENT CHECKED	
	STRUCTURE NOTATIONS CHECKED	
	CADD FILE NAME	

PROFILE	SURVEYED	DATE
	GRADES CHECKED	BY
NOTE BOOK NO.	STRUCTURE NOTATIONS CHECKED	

FILE NAME: S:\PROJECTS\2020\1155D20_1D01D8\DESIGN\CAD_SHEETS\W06_Erosion-Control.dgn



WILLETT HOFMANN & ASSOCIATES INC
 ENGINEERING ARCHITECTURE LAND SURVEYING
 809 EAST 2ND STREET, DIXON, IL 61021-0367
 T: 815-284-3381 DESIGN FIRM: #184-000918

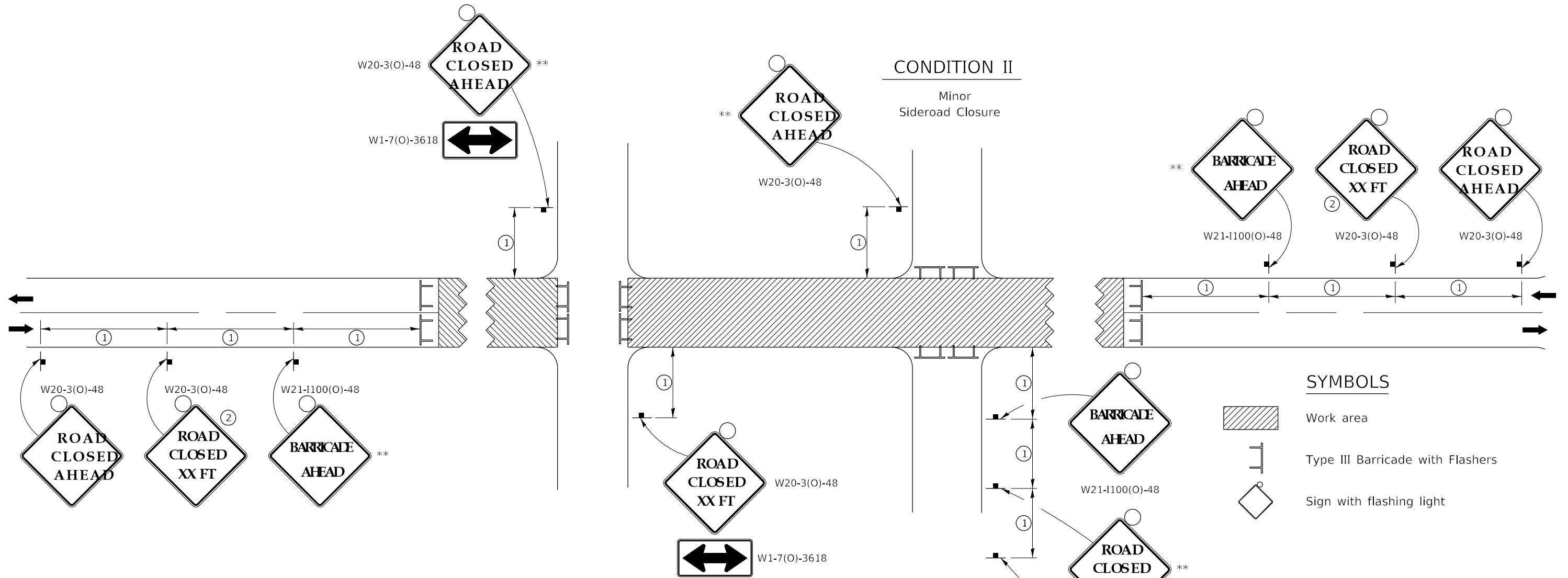
USER NAME = greg	DESIGNED - GBG	REVISED -
	CHECKED - GFS	REVISED -
PLOT SCALE = 40,0000' / in.	DRAWN - GBG	REVISED -
PLOT DATE = 8/24/2023	CHECKED - GFS	REVISED -

**STATE OF ILLINOIS
DEPARTMENT OF TRANSPORTATION**




EROSION CONTROL PLAN			
SCALE:	SHEET 01	OF 01 SHEETS	STA. TO STA.

F.A.S. RTE. 819	SECTION 101CR-1	COUNTY WASHINGTON	TOTAL SHEETS 19	SHEET NO. 12
WHA# 1155D20		CONTRACT NO. 76M90		
ILLINOIS FED. AID PROJECT				

TRAFFIC CONTROL FOR ROAD CLOSURE



SYMBOLS

-  Work area
-  Type III Barricade with Flashers
-  Sign with flashing light

GENERAL NOTES

Longitudinal dimensions may be adjusted to fit field conditions.

Side roads requiring all three signs as shown in CONDITION I (Major Sideroad Closure), shall be listed in the special provision.

** Where local access is to be maintained, barricades are to be set up as shown in "Road Closed To Thru Traffic". Type III Barricades and R11-2-4830 signs shall be as shown in "Road Closed To All Traffic" detail on Highway Standard 701901.

All dimensions are in inches unless otherwise shown.

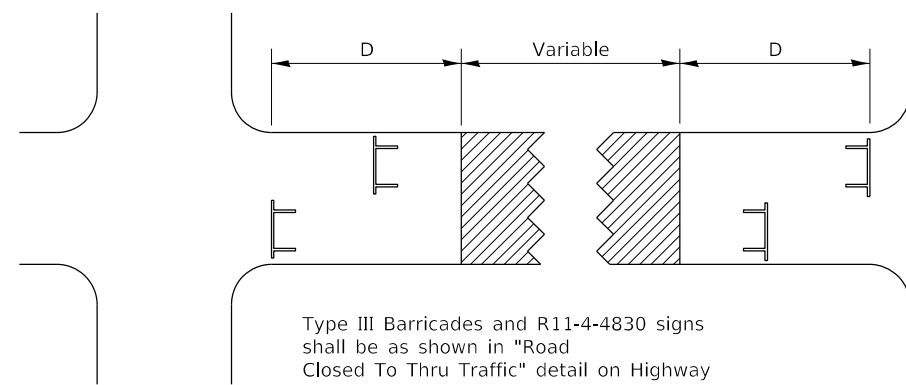
①

SIGN SPACING TABLE	
Posted Speed	Sign Spacing
45 MPH and above	500'
Below 45 MPH	250'

②

SIGN LEGEND	
Posted Speed Limit	Distance
45 MPH and above	1000'
Below 45 MPH	500'

ROAD CLOSED TO THRU TRAFFIC BARRICADE SET UP



Type III Barricades and R11-4-4830 signs shall be as shown in "Road Closed To Thru Traffic" detail on Highway Standard 701901. If the distance "D" exceeds 2000' an additional set of barricades and R11-4-4830 shall be placed at each end of the work area.

CONDITION I

Major Sideroad Closure

CONDITION II

Minor Sideroad Closure

TYPICAL APPLICATION FOR ROAD CLOSURE

FILE NAME: S:\PROJECTS\2020\1155D20_IDOTD8DESIGN\CAD_SHEETS\WO 6\1155D20_WO6_Summary-of-QTY.dgn



USER NAME = greg
DESIGNED - GBG
CHECKED - GFS
PLOT SCALE = 20,0000' / in.
DRAWN - GBG
REVISIED -
PLOT DATE = 8/15/2023
CHECKED - GFS
REVISIED -

DESIGNED - GBG
CHECKED - GFS
DRAWN - GBG
REVISIED -
CHECKED - GFS
REVISIED -

DESIGNED - GBG
CHECKED - GFS
DRAWN - GBG
REVISIED -
CHECKED - GFS
REVISIED -

STATE OF ILLINOIS
DEPARTMENT OF TRANSPORTATION

TYPICAL APPLICATION FOR ROAD CLOSURE

SHEET 01 OF 01 SHEETS

F.A.S. RTE.	SECTION	COUNTY	TOTAL SHEETS	SHEET NO.
819	101CR-1	WASHINGTON	19	14
WHA# 1155D20			CONTRACT NO. 76M90	
ILLINOIS FED. AID PROJECT				

Benchmark: RR spike in South power pole, North of IL 177, Northwest of S.N. 095-2496, 0.2 miles East of Tower Rd. Elev. = 493.761

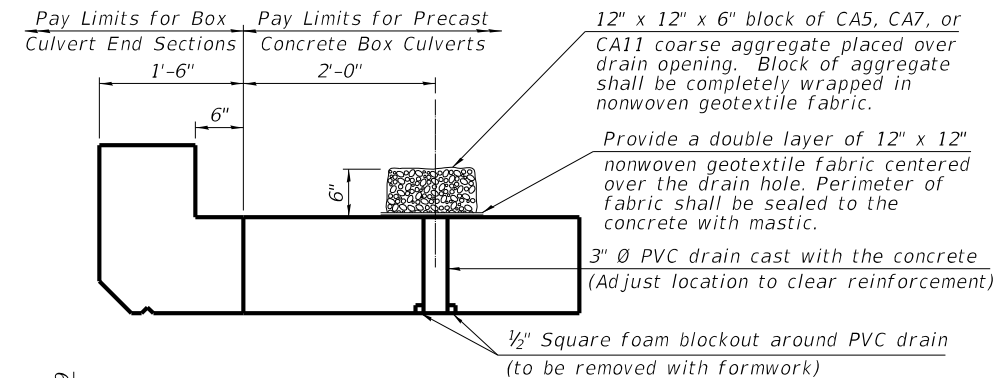
Existing Structure: S.N. 095-2496 built in 1928 as a single barrel 8'-0" x 8'-0" concrete box culvert with no skew.
The out to out headwall length is 41'-8". Roadway will be closed during construction.

INDEX OF SHEETS

1. General Plan and Elevation
- 2-3. Multi-cell Precast Concrete Box Culvert Apron End Section Details
4. Boring Logs

GENERAL NOTES

The design fill height for this box is 4.4 ft. The precast box culvert sections shall conform to the requirements of ASTM C 1577.
Drain holes shall be provided on exterior culvert walls for each precast box segment with a clear rise greater than 3 ft. The drain hole shall be located within 1/3 of the clear rise of the box culvert, shall not intercept the haunch, and shall conform to the requirements of Article 503.11 of the Standard Specification.
Nonwoven geotextile fabric shall conform to the requirements of Art. 1080.01 of the Standard Specifications. The minimum weight of the fabric shall be 6 ounces per square yard.
Precast concrete box culverts and box culvert end sections shall be backfilled with Porous Granular Embankment in the required excavation areas on the sides of the box culvert from the top of the box culvert to the bottom of the box culvert. This area of PGE is included in the Porous Granular Embankment pay item. The 1'-6" thick layer of porous granular material required under the precast concrete box culvert, according to Section 540.06 of the standard specifications, shall also apply to the end sections. Cost of this porous granular material will not be paid for separately but shall be included in the unit price of the work for which it is required.
The posts of the "Strong Post Guardrail Attached to Culvert" shall miss the sidewalls of the culvert.



DRAIN DETAIL

(All costs associated with furnishing and constructing the above drain detail will not be measured for payment but shall be included in the contract unit price for the associated work.)

WATERWAY INFORMATION

Drainage Area = 0.75 sq. mi. Low Grade Elev. = 496.00 @ Sta. 248+77.37

Flood	Freq. Yr.	Q C.F.S.	Opening Sq. Ft.		Nat. H.W.E.	Head - Ft.		Headwater El.	
			Exist.	Prop.		Exist.	Prop.	Exist.	Prop.
Design	10	479	64	99				495.86	490.03
Base	50	789	64	132				496.91	491.52
Overtopping	100	932	64	132				497.08	492.14
Max. Calc.	500	1,290	65	132				496.00	N/A
								497.38	493.60

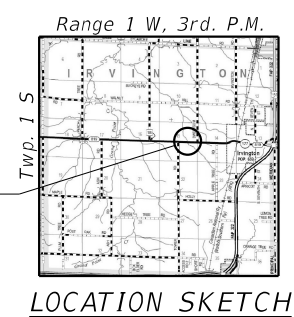
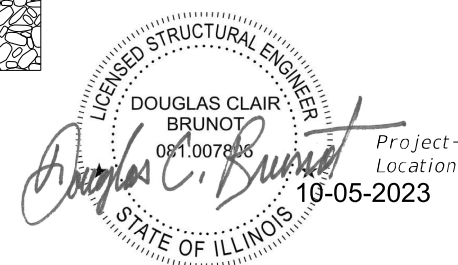
TOTAL BILL OF MATERIAL

ITEM	UNIT	TOTAL
Channel Excavation	Cu. Yd.	514
Stone Riprap, Class A4	Sq. Yd.	79
Stone Riprap, Class A5	Sq. Yd.	91
Filter Fabric	Sq. Yd.	170
Removal of Existing Structures	Each	1
Structure Excavation	Cu. Yd.	372
Name Plates	Each	1
Box Culvert End Sections, Culvert No. 1	Each	2
Precast Concrete Box Culverts 11' x 7'	Foot	102
Strong Post Guardrail Attached to Culvert	Foot	52
Porous Granular Embankment, Special	Cu. Yd.	405

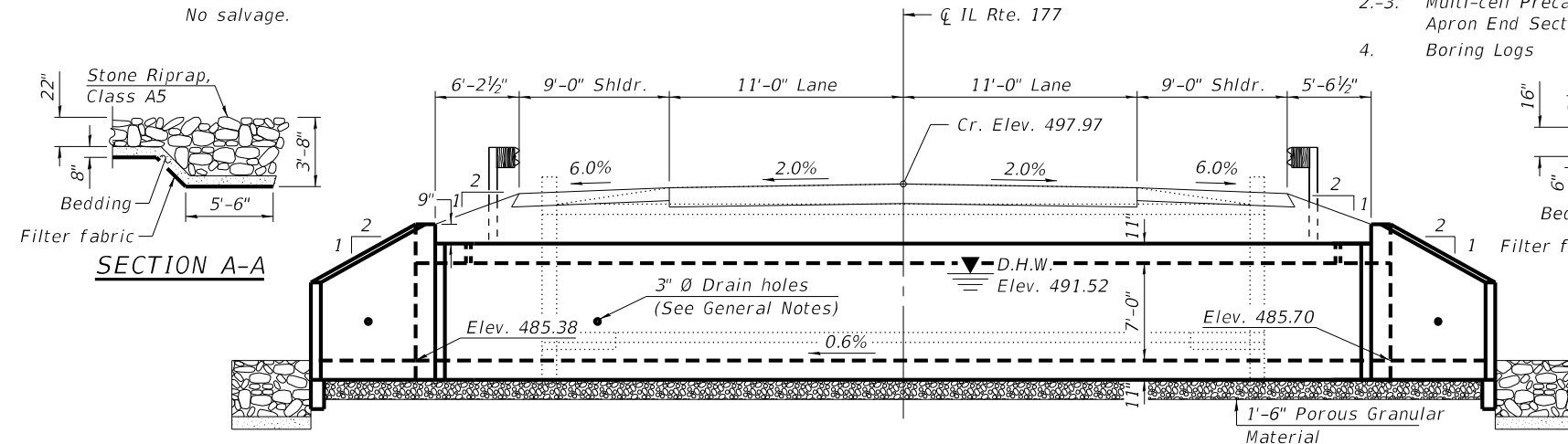


STATION 259+09
BUILT 202_ BY
STATE OF ILLINOIS
F.A.S. RT. 819 SEC. 101CR-1
LOADING HL-93
STR. NO. 095-2529

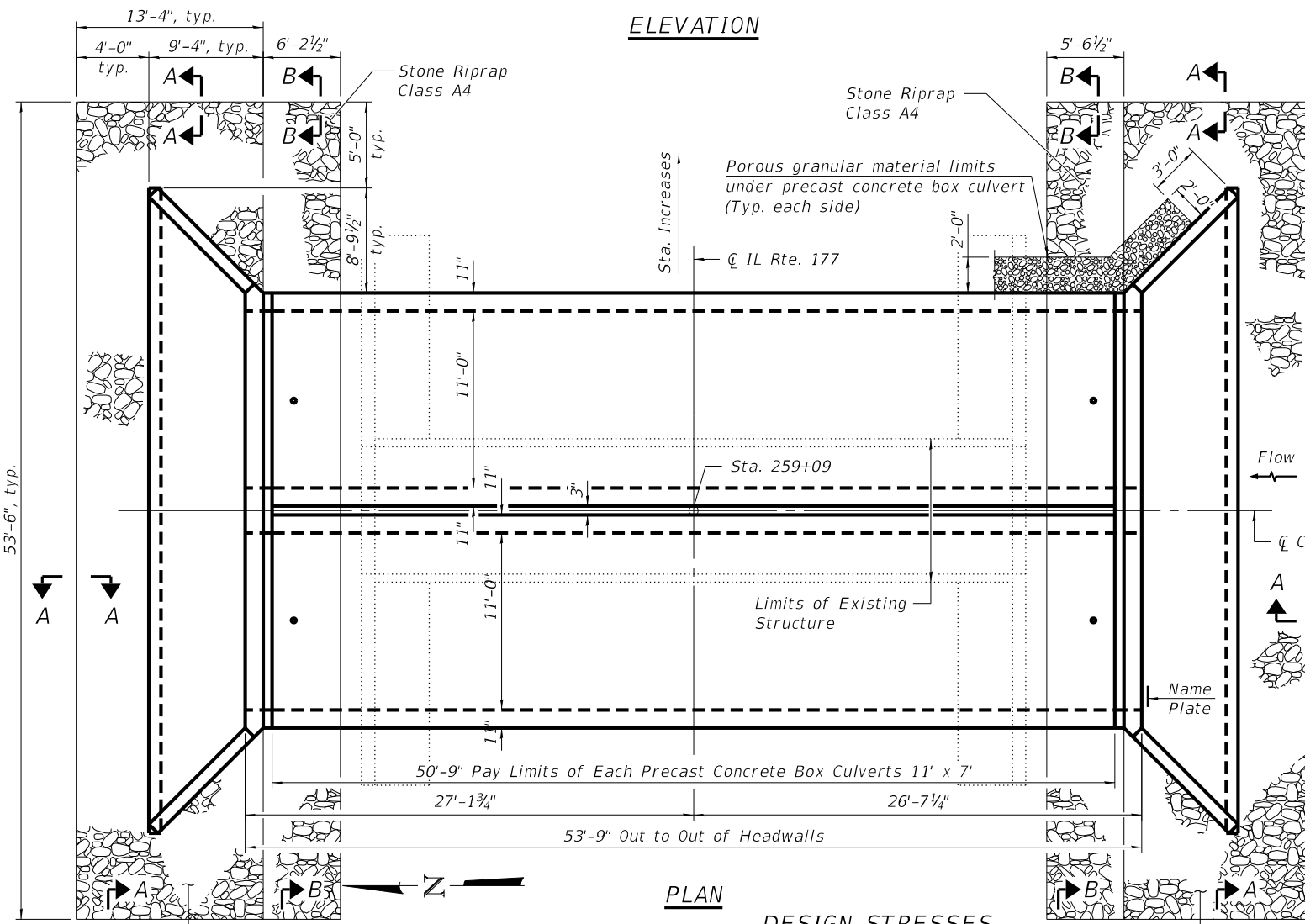
NAME PLATE
See Std. 515001



GENERAL PLAN AND ELEVATION
IL TRE 177 OVER W. TRIB TO
GRAND POINT CREEK
F.A.S. TRE. 819 SEC. 101CR-1
WASHINGTON COUNTY
STATION 259+09
S.N. 095-2529



ELEVATION



PLAN

DESIGN STRESSES

LOADING HL-93
Allow 50#/sq. ft. for future wearing surface.

DESIGN SPECIFICATIONS
2020 AASHTO LRFD Bridge Design Specifications
Customary U.S. Units, 9th Edition

PRECAST UNITS
f'c = 5,000 psi
fy = 65,000 psi (Welded Wire Reinforcement)

FIELD UNITS
f'c = 3,500 psi
fy = 65,000 psi (Welded Wire Reinforcement)

FILE NAME: S:\PROJECTS\2020\1155D20_IDOTD8\SUBMITTALS\W06\Final CADD Files\0952529-0876\90-001-GPE.dgn



USER NAME = frank	DESIGNED - SM	REVISIONS
CHECKED - DCB	REVISIONS	
PLOT SCALE = 2.0000" / F.	DRAWN - FDL	REVISIONS
PLOT DATE = 10/5/2023	CHECKED - DCB	REVISIONS

STATE OF ILLINOIS
DEPARTMENT OF TRANSPORTATION

GENERAL PLAN AND ELEVATION

F.A.S. RTE.	SECTION	COUNTY	TOTAL SHEETS	SHEET NO.
819	101CR-1	WASHINGTON	19	15
WHA# 1155D20			CONTRACT NO. 76M90	
ILLINOIS FED. AID PROJECT				

GENERAL NOTES

Box Culvert End Sections shall be constructed according to the requirements of Section 540 of the Standard Specifications except as modified herein. End sections will be paid for at the contract unit price per each for Box Culvert End Sections.

Box section dimensions, materials, and reinforcement details for Box Culvert End Sections shall be according to the requirements for ASTM C 1577 as required for the design of the portion of the culvert within the limits of Precast Concrete Box Culverts except as modified herein.

Details for Double Cell Box Culvert shown. Details for Triple Cell Box Culvert similar.

The details contained herein are for constructing the end sections using cast-in-place (CIP) construction. The Contractor may propose to furnish the end sections using precast construction methods and the end sections may consist of multiple precast concrete segments. The Contractor shall be responsible for determining all details associated with the precast option including any strengthening or stiffening provisions necessary for handling the precast segments. Conceptual details followed by shop drawings and design calculations sealed by an Illinois Licensed Structural Engineer shall be submitted to the Engineer for review and approval. Elements of the precast option shall at a minimum result in the same wingwall geometry and not have a thickness less than that detailed herein. The option to construct the end sections using precast construction methods shall be at no additional charge.

Shop drawings that detail slab thickness and reinforcement layout for the Box Culvert End Sections shall be provided to the Engineer for review and approval. Reinforcement bars not detailed herein shall be detailed with a clear distance at the end of the reinforcement not less than 1/2" nor more than 2".

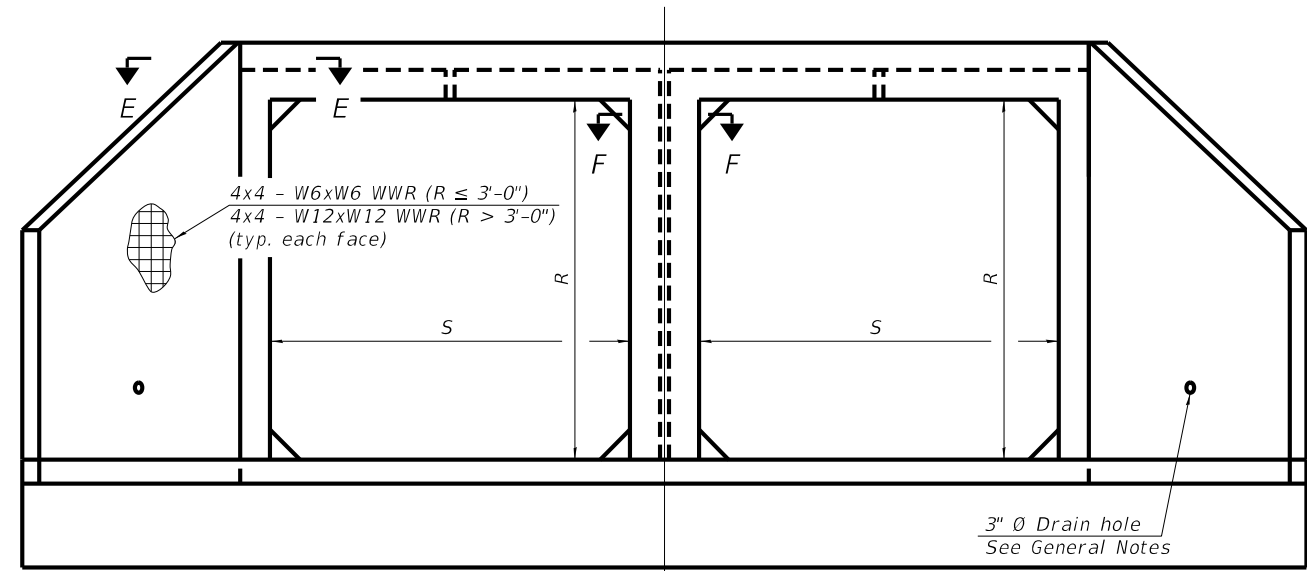
The contractor may use reinforcement bars in lieu of welded wire reinforcement (WWR). Reinforcement bars shall be limited to the sizes of #3 through #5 bars, a maximum spacing of the lesser of 8" or the member thickness, and shall result in an area of reinforcement equal to or greater than that provided by the WWR. Minimum lap lengths detailed herein are applicable to WWR and reinforcement bars.

Reinforcement (circumferential and longitudinal) in the precast concrete box culvert segments immediately adjacent to the box culvert end sections that is being lapped with the end section reinforcement shall not be less than that required by ASTM C 1577 for the design fill height or the reinforcement detailed for the end section, whichever is greater.

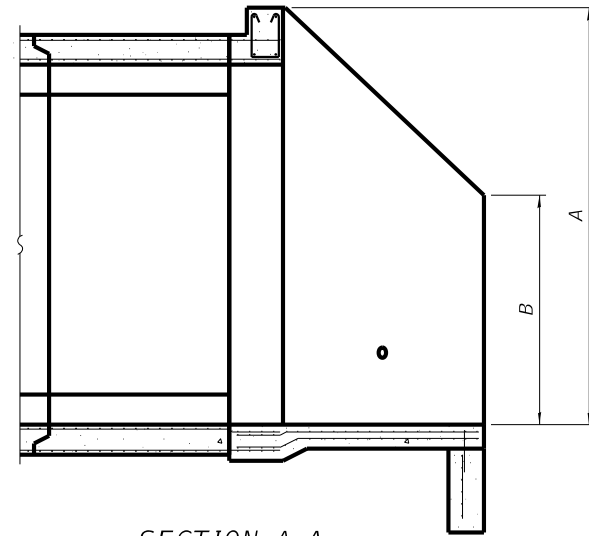
One drain hole shall be provided in each wingwall for end sections of box culverts having an opening with a clear rise greater than 3 ft. The drain hole shall be located within 1/3 of the clear rise of the box culvert and shall conform to the requirements of Article 503.11 of the Standard Specifications.

APRON END SECTION DIMENSIONS

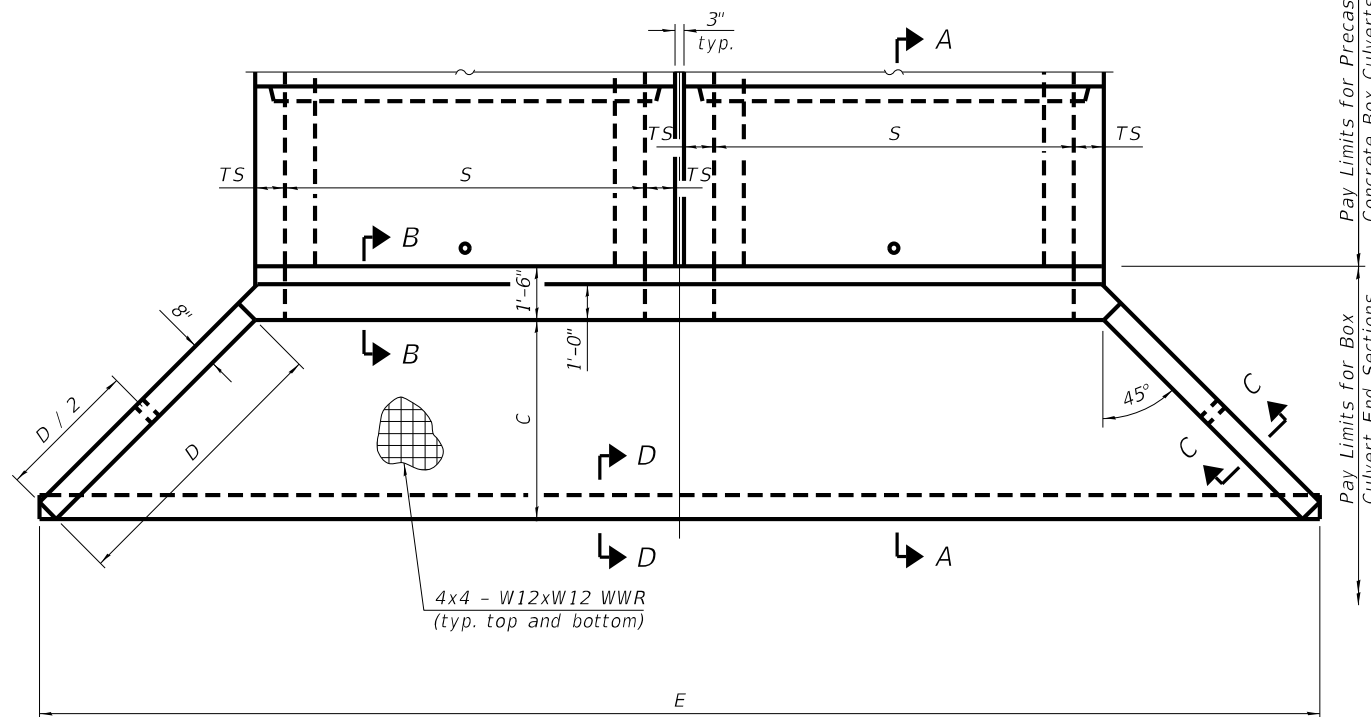
Span (S)	Rise (R)	Tt, Tb, & Ts	Double Cell					Concrete Cu. Yd.
			A	B	C	D	E	
11'-0"	7'-0"	11"	8'-8"	5'-0"	8'-3 3/4"	11'-9"	43'-5 3/4"	20.7



END VIEW



SECTION A-A



PLAN

(Sheet 1 of 2)



USER NAME = grbg	DESIGNED - SM	REVISED -
	CHECKED - DCB	REVISED -
PLOT SCALE = 0.1667' / in.	DRAWN - FDL	REVISED -
PLOT DATE = 8/15/2023	CHECKED - DCB	REVISED -

**STATE OF ILLINOIS
DEPARTMENT OF TRANSPORTATION**

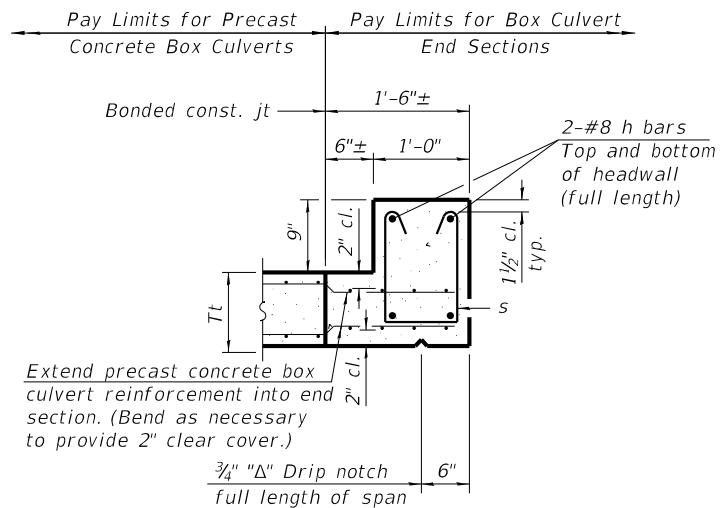
**MULTI-CELL PRECAST CONCRETE BOX CULVERT APRON END
SECTION DETAILS - STRUCTURE NO. 095-2529**

SHEET 2 OF 4 SHEETS

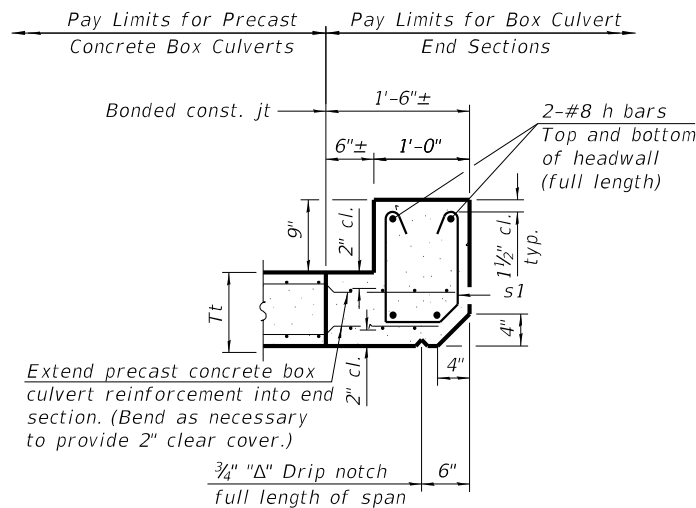
F.A.S. RTE.	SECTION	COUNTY	TOTAL SHEETS	SHEET NO.
819	101CR-1	WASHINGTON	19	16
WHA# 1155D20			CONTRACT NO. 76M90	

ILLINOIS FED. AID PROJECT

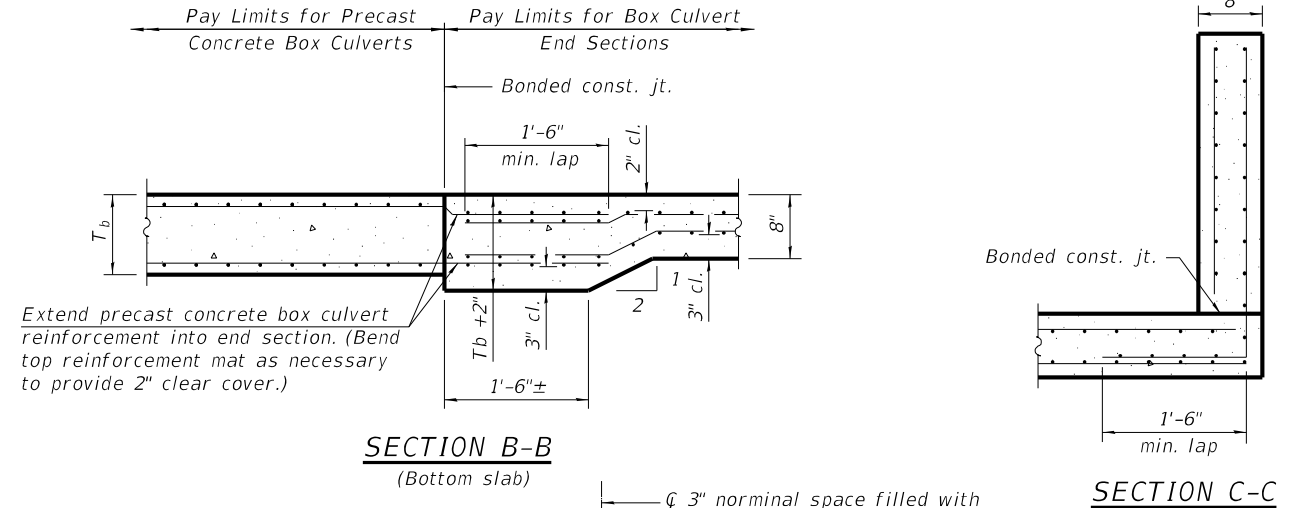
FILE NAME: S:\PROJECTS\2020\1155D20_IDOT\BID\DESIGN\CAD_SHEETS\W0_61155D20_Box Culvert Apron Details.dgn



SECTION B-B
(Top slab at downstream end)

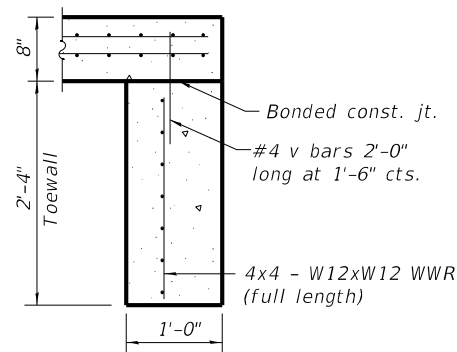


SECTION B-B
(Top slab at upstream end)

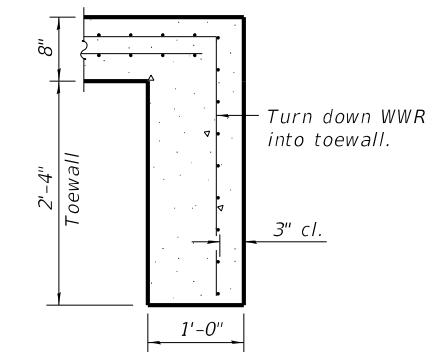


SECTION B-B
(Bottom slab)

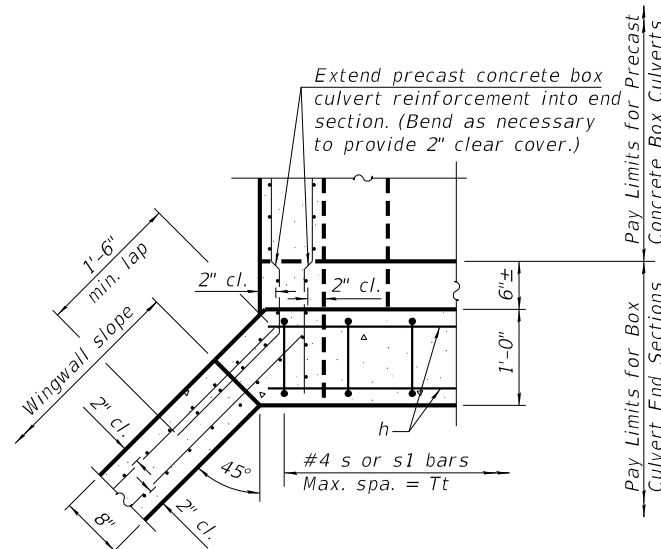
SECTION C-C



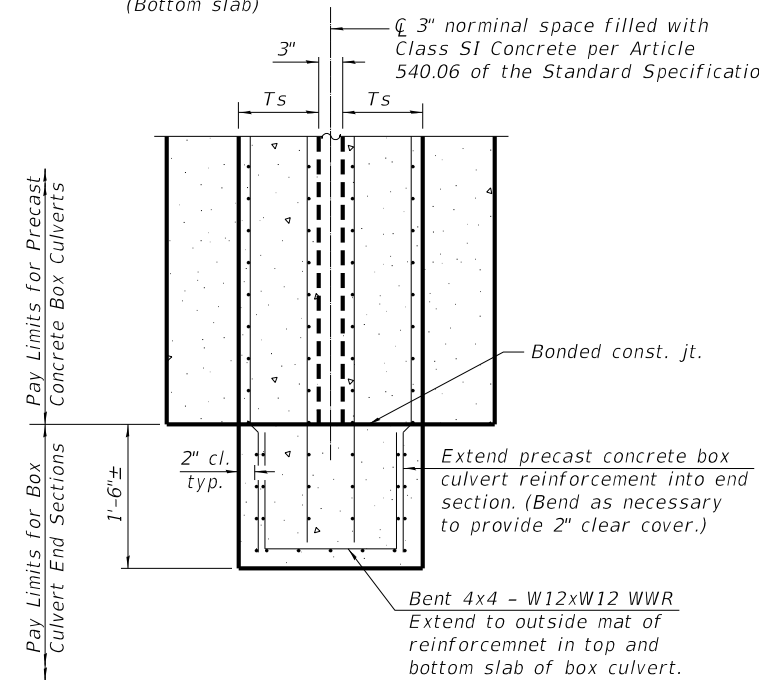
SECTION D-D



ALT. SECTION D-D



SECTION E-E



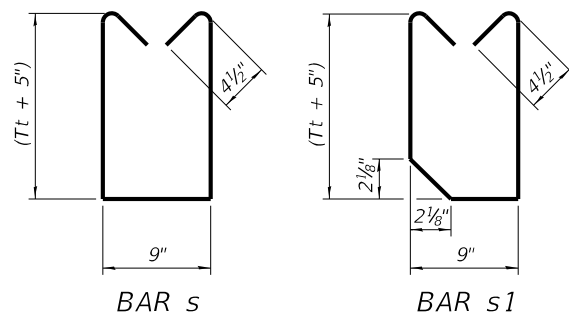
SECTION F-F

TOEWALL CONSTRUCTION SEQUENCE

1. Perform excavation and construct toewall.
2. Backfill accordingly and prepare bedding for box culvert end sections.
3. Construct remainder of box culvert end section.

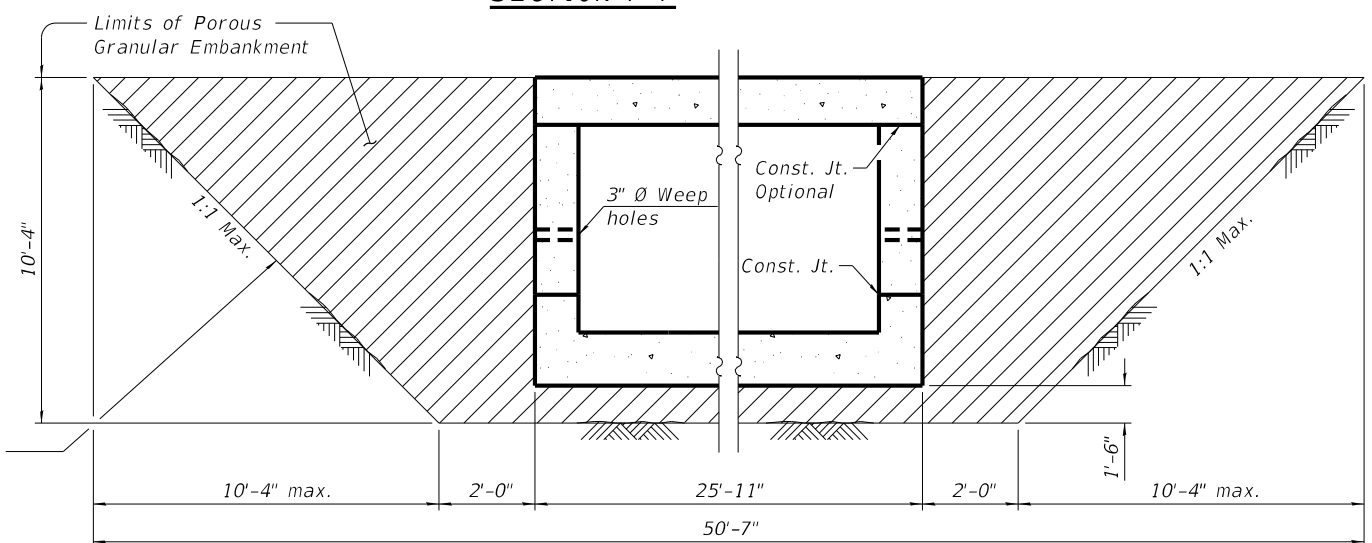
Note:

If soil conditions permit, the toewall may be poured monolithically with the bottom slab of the end section using Alt. Section D-D subject to approval from the Engineer.



BAR s

BAR s1



Excavation is incidental to the pay item Precast Concrete Box Culverts 11'x7' and shall not be measured for payment.

PAY LIMITS FOR POROUS GRANULAR EMBANKMENT
(Hatched area)

(Sheet 2 of 2)

FILE NAME: S:\PROJECTS\2020\1155020_IDOTD8\SUBMITTALS\W06\Final CADD Files\0952529-D876\095-002-003-ApronD1.dgn



USER NAME = frank
DESIGNED - SM
CHECKED - DCB
PLOT SCALE = 2.0000' / ft.
DRAWN - FDL
PLOT DATE = 10/5/2023
CHECKED - DCB
DESIGNED - SM
REVISOR -
REVISOR -
REVISOR -
REVISOR -

STATE OF ILLINOIS
DEPARTMENT OF TRANSPORTATION

MULTI-CELL PRECAST CONCRETE BOX CULVERT APRON END
SECTION DETAILS - STRUCTURE NO. 095-2529

SHEET 3 OF 4 SHEETS

F.A.S. RTE. 819 SECTION 101CR-1 COUNTY WASHINGTON TOTAL SHEETS 19 SHEET NO. 17
WHA# 1155D20 CONTRACT NO. 76M90

ILLINOIS FED. AID PROJECT



SOIL BORING LOG

Date 1/27/23

ROUTE F.A.S. 819 (IL 177) DESCRIPTION IL-177 Culvert Replacement LOGGED BY KEG

SECTION 101CR-1 LOCATION Near Irvington Illinois, Latitude 38.43929°, Longitude -89.18699°

COUNTY Washington DRILLING METHOD HSA HAMMER TYPE AUTO

STRUCT. NO.	DEPT H	BLOW S	UCS Qu	MOIST T	Surface Water Elev.	DEPT H	BLOW S	UCS Qu	MOIST T
Station	(ft)	(/6")	(tsf)	(%)	ft	(ft)	(/6")	(tsf)	(%)
095-2496									
SB-01 (SW quad.)									
Station 258+64									
Offset 11.3 ft RT									
Ground Surface Elev. 497.76									
ASPHALT PAVEMENT - 2"									
CONCRETE PAVEMENT - 8"									
SILTY CLAY - Brownish Gray, Medium Stiff	3		1.5	18		5	7	3.4	14
	2		P						
	3								
	1						4		
	3	2.3		28			7	4.1	13
	3	P					10	B	
LL=29%, PL=17%, PI=12%	4						4		
	2	0.6		18			8	3.8	13
	3	B					10	B	
Becomes Medium Stiff to Stiff	1						4		
	2	1.3		24			6	3.7	13
	3	B					8	B	
End of Boring					467.8				
Becomes Stiff	2								
LL=49%, PL=16%, PI=33%	2	2.6		18					
	4	B							
Becomes Medium Stiff	1								
	2	0.9		18					
	3	B							
Becomes Gray and Brown	1								
	2	1.0		21					
	2	B							
Becomes Gray and Stiff	4								
	5	2.5		14					
	10	B							

The Unconfined Compressive Strength (UCS) Failure Mode is indicated by (B-Bulge, S-Shear, P-Penetrometer)
The SPT (N value) is the sum of the last two blow values in each sampling zone (AASHTO T206)

BBS, form 137 (Rev. 8-99)



SOIL BORING LOG

Date 1/27/23

ROUTE F.A.S. 819 (IL 177) DESCRIPTION IL-177 Culvert Replacement LOGGED BY KEG

SECTION 101CR-1 LOCATION Near Irvington Illinois, Latitude 38.43932°, Longitude -89.18672°

COUNTY Washington DRILLING METHOD HSA HAMMER TYPE AUTO

STRUCT. NO.	DEPT H	BLOW S	UCS Qu	MOIST T	Surface Water Elev.	DEPT H	BLOW S	UCS Qu	MOIST T
Station	(ft)	(/6")	(tsf)	(%)	ft	(ft)	(/6")	(tsf)	(%)
095-2496									
SB-02 (NE quad.)									
Station 259+64									
Offset 11.3 ft LT									
Ground Surface Elev. 498.06									
ASPHALT PAVEMENT - 2"									
CONCRETE PAVEMENT - 8"									
SILTY CLAY - Brown and Gray, Soft to Medium Stiff	3					4			
	2	0.7		17		8	2.0	13	
	2	B				12	B		
Becomes Gray, Medium Stiff to Stiff, w/ Lignite Stains	5					5			
	10	2.8		14		8	1.7	11	
	10	P				12	B		
Becomes Brown and Gray, Soft to Medium Stiff, w/ Gravel Pieces	WH					5			
	3	1.3		23		8	1.9	11	
	3	B				13	B		
LL=31%, PL=16%, PI=15%	WH					4			
	2	0.3		21		8	1.6	11	
	2	B				12	B		
End of Boring					468.1				
w/ Lignite Stains	1								
	2	0.6		21					
	2	B							
Becomes Light Brown, Stiff, w/ Gravel	1								
	2	0.7		20					
	3	B							
Becomes Gray	2								
LL=26%, PL=15%, PI=11%	7	2.5		14					
	11	B							
Becomes Gray	5								
LL=26%, PL=15%, PI=11%	7	1.7		10					
	10	B							

The Unconfined Compressive Strength (UCS) Failure Mode is indicated by (B-Bulge, S-Shear, P-Penetrometer)
The SPT (N value) is the sum of the last two blow values in each sampling zone (AASHTO T206)

BBS, form 137 (Rev. 8-99)

FILE NAME: S:\PROJECTS\2020\1155D20_IDOTD8DESIGN\CAD_SHEETS\WO 6\1155D20_Boring_Logs.dgn



USER NAME = grbg	DESIGNED - SM	REVISED -
CHECKED - DCB	REVISIONS -	
PLOT SCALE = 0.1667' / in.	DRAWN - FDL	REVISED -
PLOT DATE = 8/15/2023	CHECKED - DCB	REVISED -

STATE OF ILLINOIS
DEPARTMENT OF TRANSPORTATION

BORING LOGS
STRUCTURE NO. 095-2529

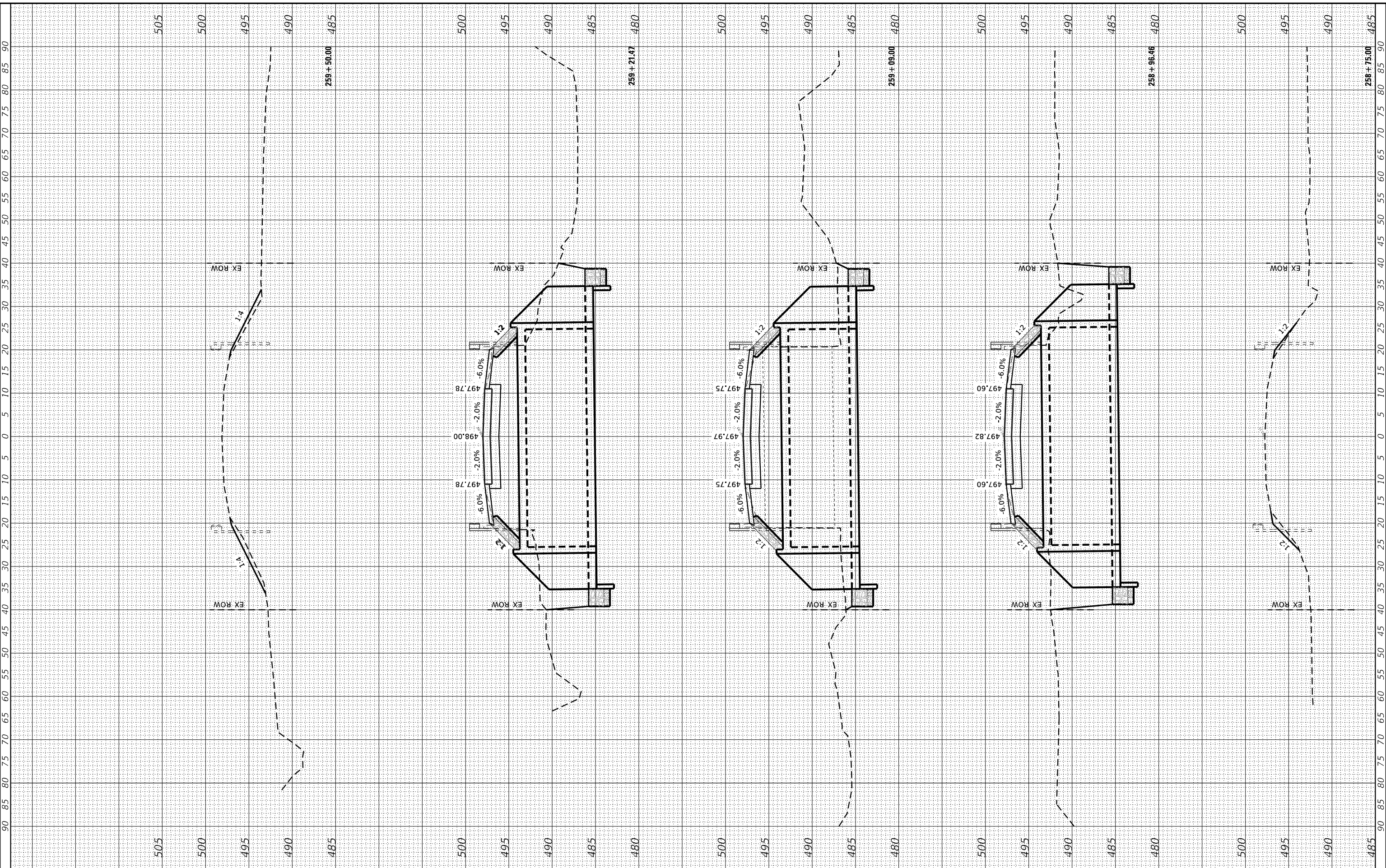
SHEET 4 OF 4 SHEETS

F.A.S. RTE. 819	SECTION 101CR-1	COUNTY WASHINGTON	TOTAL SHEETS 19	SHEET NO. 18
WHA# 1155D20		CONTRACT NO. 76M90		
ILLINOIS FED. AID PROJECT				

FINAL SURVEY NO.	SURVEYED	DATE
NOTE BOOK	PLOTTED	
AREAS CHECKED	TEMPLATE	
	AREAS CHECKED	

ORIGINAL SURVEY NO.	SURVEYED	DATE
NOTE BOOK	PLOTTED	
AREAS CHECKED	TEMPLATE	
	AREAS CHECKED	

MODEL: D:\mif\...
 FILE NAME: S:\PROJECTS\2020\1155D20_100\DOT\DESIGN\CAD_SHEETS\100_1155D20_W06_VS_SHEET.dgn



WILLETTS HOFMANN & ASSOCIATES INC.
 ENGINEERING ARCHITECTURE LAND SURVEYING
 809 EAST 2ND STREET, DIXON, IL 61021-0367
 T: 815-284-3381 DESIGN FIRM: #184-000918

USER NAME = greg	DESIGNED - GBG	REVISED -
PLOT SCALE = 240,0000' / ft.	DRAWN - GBG	REVISED -
PLOT DATE = 8/24/2023	CHECKED - GFS	REVISED -
	DATE - 8/24/2023	REVISED -

DESIGNED - GBG	REVISED -
DRAWN - GBG	REVISED -
CHECKED - GFS	REVISED -
DATE - 8/24/2023	REVISED -

**STATE OF ILLINOIS
 DEPARTMENT OF TRANSPORTATION**

SCALE:		SHEET 01 OF 01 SHEETS		STA. 258+75.00 TO STA. 259+50.00	
--------	--	-----------------------	--	----------------------------------	--

F.A.S. RTE. 819	SECTION 101CR-1	COUNTY WASHINGTON	TOTAL SHEETS 19	SHEET NO. 19
WHA# 1155D20		CONTRACT NO. 76M90		
ILLINOIS FED. AID PROJECT				