

F.A. RTE	SECTION	COUNTY	TOTAL SHEETS	SHEET NO.
	21-00186-00-R5	JACKSON	23	1
HMG JOB NO. 8111		ILLINOIS	CONTRACT NO. 99711	

# JACKSON COUNTY HIGHWAY DEPARTMENT

## PROPOSED ROADWAY PLANS

**NORTH MARION STREET  
SECTION 21-00186-00-R5  
FEDERAL AID PROJECT U012(455)  
HSIP #202012019  
SAFETY IMPROVEMENTS AND RESURFACING  
JACKSON COUNTY**

### INDEX OF SHEETS

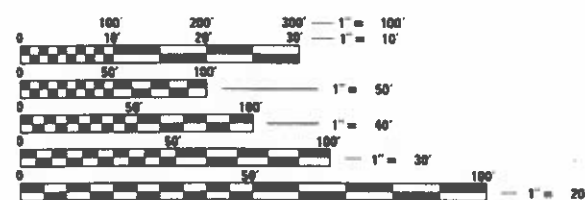
- 1 COVER SHEET
- 2 GENERAL NOTES & HIGHWAY STANDARDS
- 3-5 SUMMARY OF QUANTITIES
- 6-7 TYPICAL SECTIONS
- 8-9 SCHEDULE OF QUANTITIES
- 10 ALIGNMENTS, TIES & BENCHMARKS
- 11-18 PLAN & PROFILE
- 19 EROSION CONTROL
- 20 SPECIAL DETAILS
- 21-23 CROSS SECTIONS

### DESIGN INFORMATION

N. MARION ST  
ADT 400 (2017) ACTUAL  
400 (2021) ESTIMATED



LOCATION OF SECTION INDICATED THUS: - [black rectangle] -



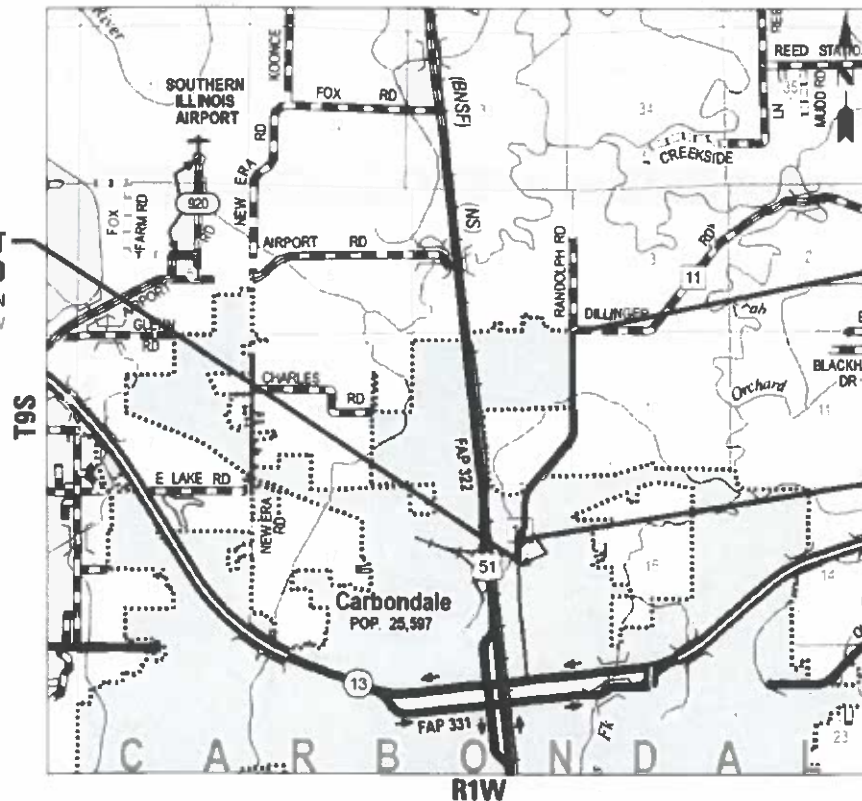
FULL SIZE PLANS HAVE BEEN PREPARED USING STANDARD ENGINEERING SCALES. REDUCED SIZED PLANS WILL NOT CONFORM TO STANDARD SCALES. IN MAKING MEASUREMENTS ON REDUCED PLANS, THE ABOVE SCALES MAY BE USED.

J.U.L.I.E.  
JOINT UTILITY LOCATION INFORMATION FOR EXCAVATION  
1-800-892-0123  
OR 811

**HMG** ENGINEERS, INC.  
9360 HOLY CROSS LANE  
BREESE, ILLINOIS 62230  
ENGINEERS 888.HMG.ENGR  
IL PROF. DESIGN FIRM NO. 184.000899  
EXPIRES 04/30/2023

CONTRACT NO. 99711

**BEGIN PROJECT**  
10 + 44.30  
LAT: 37°44'17.12"N  
LONG: 89°12'52.92"W



**END PROJECT**  
97 + 20.21  
LAT: 37°45'37.29"N  
LONG: 89°12'28.63"W

**FULL DEPTH PAVEMENT RECONSTRUCTION**  
STA. 19 + 36.96 TO  
STA. 24 + 41.05

NOT TO SCALE

GROSS LENGTH = 8,735.35 FT. = 1.654 MILES  
NET LENGTH = 8,735.35 FT. = 1.654 MILES

AGENCY RESPONSIBLE FOR LETTING	
APPROVED	August 14, 2023 [Signature] MITCH BURDICK, COUNTY ENGINEER JACKSON COUNTY HIGHWAY DEPARTMENT
PASSED	Sept 6, 2023 [Signature] DISTRICT 1 ENGINEER OF LOCAL ROADS & STREETS
RELEASED FOR BID BASED ON LIMITED REVIEW	Sept 6, 2023 [Signature] REGION 1 ENGINEER



[Signature] 8/10/2023  
MARK O'BRIEN, P.E.  
ILLINOIS REGISTERED ENGINEER NO. 062-066496  
REGISTRATION EXPIRES NOV. 30, 2023

**HIGHWAY STANDARDS**

- 000001-08 STANDARD SYMBOLS, ABBREVIATIONS AND PATTERNS
- 001001-02 AREAS OF REINFORCEMENT BARS
- 001006 DECIMAL OF AN INCH AND OF A FOOT
- 280001-07 TEMPORARY EROSION CONTROL SYSTEMS
- 482011-03 HMA SHLD, STRIPS/SHLDS, WITH RESURFACING OR WIDENING AND RESURFACING PROJECTS
- 642006-01 SHOULDER RUMBLE STRIPS, 8 IN.
- 701006-05 OFF-ROAD OPERATIONS, 2L, 2W, 15' (4.5 M) TO 24" (600 MM) FROM PAVEMENT EDGE
- 701011-04 OFF-ROAD MOVING OPERATIONS, 2L, 2W, DAY ONLY
- 701201-05 LANE CLOSURE, 2L, 2W, DAY ONLY, FOR SPEEDS ≥ 45 MPH
- 701301-04 LANE CLOSURE, 2L, 2W, SHORT TIME OPERATIONS
- 701306-04 LANE CLOSURE, 2L, 2W, SLOW MOVING OPERATIONS DAY ONLY, FOR SPEEDS ≥ 45 MPH
- 701311-03 LANE CLOSURE, 2L, 2W, MOVING OPERATIONS - DAY ONLY
- 701326-04 LANE CLOSURE, 2L, 2W, PAVEMENT WIDENING, FOR SPEEDS ≥ 45 MPH
- 701501-06 URBAN LANE CLOSURE, 2L, 2W, UNDIVIDED
- 701901-08 TRAFFIC CONTROL DEVICES
- 720001-01 SIGN PANEL MOUNTING DETAILS
- 720006-04 SIGN PANEL ERECTION DETAILS
- 725001-01 OBJECT AND TERMINAL MARKERS
- 780001-05 TYPICAL PAVEMENT MARKINGS
- 781001-04 TYPICAL APPLICATIONS RAISED REFLECTIVE PAVEMENT MARKERS
- BLR 24-2 MAILBOX TURNOUT FOR LOCAL ROADS

**GENERAL NOTES**

1. ALL CONSTRUCTION SHALL BE IN ACCORDANCE WITH THE ILLINOIS DEPARTMENT OF TRANSPORTATION STANDARD SPECIFICATIONS FOR ROAD AND BRIDGE CONSTRUCTION, ADOPTED JANUARY 1, 2022.
2. UTILITIES KNOWN TO HAVE FACILITIES WITHIN THE PROJECT AREA ARE AS FOLLOWS.

UTILITY	CONTACT	PHONE
AMEREN ILLINOIS (SOUTH)	SAM KASSING	618-972-1965
CLEARWAVE COMMUNICATIONS	ROTH CLAYTON	-
CITY OF CARBONDALE	TONY HARRISON	618-457-3240
EGYPTIAN ELECTRIC COOP	BRAD AUSTIN	618-322-8830
FRONTIER COMMUNICATIONS	KALIN HINSHAW	815-895-1515
ZITO MEDIA	BRANDON PAYNE	814-203-9584
LAKESIDE WATER DIST	BRIAN ZEIGLER	618-993-6411
VERIZON	-	-
MEDIACOM (JACKSON COUNTY)	CHRIS MCMURTRY	618-993-5216
MEDIACOM	DANIEL SALEE	845-768-8074

3. THE PROPOSED PAVEMENT MARKING SHALL MATCH THE LOCATIONS OF THE EXISTING PAVEMENT MARKING, AS DIRECTED BY THE ENGINEER.
4. EXCAVATION & GRADING REQUIRED FOR THE PLACEMENT OF PROPOSED HMA SHOULDERS SHALL BE INCLUDED IN THE CONTRACT UNIT PRICE FOR HMA SHOULDERS, 6".
5. THE QUANTITY FOR REMOVAL AND DISPOSAL OF UNSUITABLE MATERIAL IS AN ESTIMATED QUANTITY AND MAY OR MAY NOT BE REQUIRED FOR THE COMPLETION OF THIS CONTRACT. USE OF THIS PAY ITEM WILL BE AT THE INSTRUCTION OF THE ENGINEER.
6. FACTORS FOR ESTIMATING PLAN QUANTITIES ARE AS FOLLOWS AND SHALL NOT BE USED FOR THE BASIS OF FINAL QUANTITIES:

HOT-MIX ASPHALT BASE COURSE	112 LBS/SQ YD/IN
HOT-MIX ASPHALT SURFACE COURSE	112 LBS/SQ YD/IN
AGGREGATE (SURFACE, BASE, BACKFILL)	2.05 TON/CU YD
BITUMINOUS MATERIALS (TACK COAT):	
-EXISTING HMA, MILLED HMA	0.05 LB/SQ FT
-NEW HMA	0.025 LB/SQ FT

7. THE FOLLOWING MIXTURE REQUIREMENTS ARE APPLICABLE FOR THIS PROJECT:

ROUTE	NORTH MARION STREET
SECTION	21-00186-00-RS
COUNTY	JACKSON

DESCRIPTION: PAVEMENT OVERLAY, ADDING PAVED SHOULDERS, PAVEMENT MARKINGS, AND VERTICAL CURVE CORRECTION.

LOCATIONS	HOT-MIX ASPHALT FULL DEPTH 8"	
	SURFACE COURSE, MIX C, N 50	BINDER COURSE, N50, IL-19.0
MIXTURE USE		
THICKNESS	2"	6" (4" MAX LIFT)
AC/PG	PG 64-22	PG 64-22
DESIGN AIR VOIDS	4.0%, 50 GYRATION DESIGN	4.0%, 70 GYRATION DESIGN
MIX COMPOSITION	IL-9.5mm	IL-19.0mm
FRICTION AGG	MIX C	NONE
MIXTURE WEIGHT	112 LBS/SQ YD/IN	112 LBS/SQ YD/IN
QUALITY MGMT PROG.	QC/QA	QC/QA
SUBLOT SIZE	3000	---
MATERIAL TRANSFER DEVICE	NO	NO

LOCATIONS	HOT-MIX ASPHALT SHOULDERS			
	TOP LIFT	LOWER LIFT	TOP LIFT	LOWER LIFT
MIXTURE USE	SURFACE COURSE, N 30, IL-19.5L	BINDER COURSE, N30, IL-19.0	SURFACE COURSE, N 30, IL-19.5L	BINDER COURSE, N30, IL-19.0
THICKNESS	2"	4" (4" MAX LIFT)	2"	4" (4" MAX LIFT)
AC/PG	PG 64-22	PG 64-22	PG 64-22	PG 64-22
DESIGN AIR VOIDS	4.0%, 70 GYRATION DESIGN	4.0%, 70 GYRATION DESIGN	4.0%, 70 GYRATION DESIGN	4.0%, 30 GYRATION DESIGN
MIX COMPOSITION	IL-9.5L	IL-9.5L	IL-9.5L	IL-19.0L
FRICTION AGG	MIX C	NONE	MIX C	NONE
MIXTURE WEIGHT	112 LBS/SQ YD/IN	112 LBS/SQ YD/IN	112 LBS/SQ YD/IN	112 LBS/SQ YD/IN
QUALITY MGMT PROG.	QC/QA	QC/QA	QC/QA	QC/QA
SUBLOT SIZE	1630	1630	N/A	N/A
MATERIAL TRANSFER DEVICE	YES	YES	NO	NO

MODEL: Default  
FILE NAME: \\HMG\Jobs\8111\_Jackson\_Co\_Master\_Task\_Curbs\8111-1-18-2023\8111-1-18-2023.dgn



USER NAME = mobrien  
DESIGNED -  
DRAWN -  
PLOT SCALE = 100,0000' / in.  
CHECKED -  
PLOT DATE = 10/2/2023  
DATE -

REVISOR -  
REVISION -  
REVISOR -  
REVISION -

**JACKSON COUNTY  
HIGHWAY DEPARTMENT**

**HIGHWAY STANDARDS & GENERAL NOTES**

SCALE: NTS SHEET 1 OF 1 SHEETS STA. TO STA.

F.A. RTE.	SECTION	COUNTY	TOTAL SHEETS	SHEET NO.
	21-00186-00-RS	JACKSON	23	2
HMG JOB NO. 8111.100		CONTRACT NO. 99711		
ILLINOIS		FED. AID PROJECT U012(455)		

CODE NO.	ITEM	UNIT	TOTAL QUANTITY	CONSTRUCTION CODE	
				HSIP 90% FED/10% COUNTY	MOTOR FUEL TAX 100% COUNTY
				ROADWAY	ROADWAY
				0004 RURAL	0005 RURAL
20200100	EARTH EXCAVATION	CU YD	385	385	
20201200	REMOVAL AND DISPOSAL OF UNSUITABLE MATERIAL	CU YD	100	100	
31101000	SUBBASE GRANULAR MATERIAL, TYPE B	TON	63	63	
31101400	SUBBASE GRANULAR MATERIAL, TYPE B 6"	SQ YD	128	128	
31101810	SUBBASE GRANULAR MATERIAL, TYPE B 12"	SQ YD	454	454	
40200800	AGGREGATE SURFACE COURSE, TYPE B	TON	89	89	
40600275	BITUMINOUS MATERIALS (PRIME COAT)	POUND	1021	1021	
40600290	BITUMINOUS MATERIALS (TACK COAT)	POUND	13018	307	12711
40600370	LONGITUDINAL JOINT SEALANT	FOOT	26640	1224	25416
40600982	HOT-MIX ASPHALT SURFACE REMOVAL - BUTT JOINT	SQ YD	89		89
40602985	HOT-MIX ASPHALT BINDER COURSE, IL-9.5, N70	TON	1587		1587
40604052	HOT-MIX ASPHALT SURFACE COURSE, IL-9.5, MIX "C", N70	TON	1587		1587
40701841	HOT-MIX ASPHALT PAVEMENT (FULL-DEPTH), 8"	SQ YD	454	454	
44000100	PAVEMENT REMOVAL	SQ YD	454	454	

MODEL: Default  
 FILE NAME: \\hmg\pub\8111\_Jackson\_Co\_Master\_Task\_Order\8111\_01\_Item\_Matlen\_S1\_TO\CAD\_Sheets\8111-915-500.dwg



USER NAME = mabrien	DESIGNED -	REVISED -
PLOT SCALE = 100.0000' / In.	DRAWN -	REVISED -
PLOT DATE = 9/19/2023	CHECKED -	REVISED -
	DATE -	REVISED -

**JACKSON COUNTY  
 HIGHWAY DEPARTMENT**

**SUMMARY OF QUANTITIES**


SCALE: NTS      SHEET 1 OF 1 SHEETS      STA.      TO STA.

F.A. RTE.	SECTION	COUNTY	TOTAL SHEETS	SHEET NO.
	21-00186-00-R5	JACKSON	23	3
HMG JOB NO. 8111.100		CONTRACT NO. 99711		
ILLINOIS FED. AID PROJECT			U012(455)	

CODE NO.	ITEM	UNIT	TOTAL QUANTITY	CONSTRUCTION CODE	
				HSIP	MOTOR FUEL TAX
				90% FED/10% COUNTY	100% COUNTY
				ROADWAY	ROADWAY
				0004	0005
				RURAL	RURAL
48203021	HOT-MIX ASPHALT SHOULDERS, 6"	SQ YD	5784	5784	
56109210	WATER VALVES TO BE ADJUSTED	EACH	1		1
6060095	CLASS SI CONCRETE (OUTLET)	CU YD	7.6	7.6	
60602800	CONCRETE GUTTER, TYPE B	FOOT	383	383	
64200108	SHOULDER RUMBLE STRIPS, 8 INCH	FOOT	16151	16151	
67100100	MOBILIZATION	L SUM	1	0.67	0.33
70100450	TRAFFIC CONTROL AND PROTECTION, STANDARD 701201	L SUM	1	0.6	0.4
70100460	TRAFFIC CONTROL AND PROTECTION, STANDARD 701306	L SUM	1	0.5	0.5
70100500	TRAFFIC CONTROL AND PROTECTION, STANDARD 701326	L SUM	1	0.5	0.5
70102620	TRAFFIC CONTROL AND PROTECTION, STANDARD 701501	L SUM	1	0.6	0.4
70300100	SHORT TERM PAVEMENT MARKING	FOOT	880		880
70300150	SHORT TERM PAVEMENT MARKING REMOVAL	SQ FT	241		241
# 72000100	SIGN PANEL - TYPE 1	SQ FT	74	74	
# 72400100	REMOVE SIGN PANEL ASSEMBLY - TYPE A	EACH	4	4	

# SPECIALTY ITEM


PROJECT: 21-00186-00-RS, Section 011.01 Item: Signs, Co. Master File, Section 011.01 Item: Signs, S. DIVISION, Sheet: 011.01-45-50.dwg  
 PLOT DATE: 8/29/2023

 HMG ENGINEERS IL PROF DESIGN FIRM 184,000899	USER NAME = mobrion	DESIGNED -	REVISED -	<b>JACKSON COUNTY HIGHWAY DEPARTMENT</b>	<b>SUMMARY OF QUANTITIES</b>			F.A. RTE.	SECTION	COUNTY	TOTAL SHEETS	SHEET NO.
	PLOT SCALE = 100.0000' / in	DRAWN -	REVISED -					HMG JOB NO. 8111.100	21-00186-00-RS	JACKSON	23	4
	PLOT DATE = 8/29/2023	CHECKED -	REVISED -		SCALE: NTS	SHEET 2 OF 1 SHEETS	STA.	TO STA.	ILLINOIS FED. AID PROJECT U012(455)			
	DATE -	REVISED -										

CODE NO.	ITEM	UNIT	TOTAL QUANTITY	CONSTRUCTION CODE	
				HSIP 90% FED/10% COUNTY	MOTOR FUEL TAX 100% COUNTY
				ROADWAY	ROADWAY
				0004 RURAL	0005 RURAL
# 72800100	TELESCOPING STEEL SIGN SUPPORT	FOOT	183	183	
# 78001110	PAINT PAVEMENT MARKING - LINE 4"	FOOT	24421	24421	
# 78001180	PAINT PAVEMENT MARKING - LINE 24"	FOOT	12	12	
X2501020	SEEDING, CLASS 2A (SPECIAL)	ACRE	0.25	0.25	
X7010216	TRAFFIC CONTROL AND PROTECTION, (SPECIAL)	L SUM	1	1	
# X7240600	REMOVE AND RE-ERECT EXISTING SIGN	EACH	3	1	2
Z0034105	MATERIAL TRANSFER DEVICE	TON	3377	203	3174

# SPECIALITY ITEM

MODEL: Default  
 FILE NAME: W:\Projects\8111 Jackson Co Master Data\8111 01 North Marion St TOI\EGD Sheets\8111-01-500.dgn

 ILL. PROF. DESIGN FIRM 184.000899	USER NAME = mobrien	DESIGNED -	REVISED -	<b>JACKSON COUNTY HIGHWAY DEPARTMENT</b>	<b>SUMMARY OF QUANTITIES</b>	F.A. RTE.	SECTION	COUNTY	TOTAL SHEETS	SHEET NO.	
	PLOT SCALE = 100.0000 / in.	CHECKED -	REVISED -				21-00186-00-RS	JACKSON	23	5	
	PLOT DATE = 9/20/2023	DATE -	REVISED -			SCALE: NTS	SHEET 3 OF 1 SHEETS	STA.	TO STA.	HMG JOB NO. 8111.100	CONTRACT NO. 99711
										ILLINOIS FED. AID PROJECT	U012(455)





**PAVING SCHEDULE**

LOCATION			SUBBASE GRANULAR MATERIAL, TYPE B	SUBBASE GRANULAR MATERIAL, TYPE B 6"	SUBBASE GRANULAR MATERIAL, TYPE B 12"	AGGREGATE SURFACE COURSE, TYPE B	BITUMINOUS MATERIALS (PRIME COAT)	BITUMINOUS MATERIALS (TACK COAT)	LONGITUDINAL JOINT SEALANT	HOT-MIX ASPHALT SURFACE REMOVAL - BUTT JOINT	HOT-MIX ASPHALT BINDER COURSE, IL-9.5, N70	HOT-MIX ASPHALT SURFACE COURSE, IL-9.5, MIX "C", N70	HOT-MIX ASPHALT PAVEMENT (FULL DEPTH), 8"	MATERIAL TRANSFER DEVICE	PAVEMENT REMOVAL	HOT-MIX ASPHALT SHOULDERS, 6"	CLASS SI CONCRETE (OUTLET)	CONCRETE GUTTER, TYPE B	SHOULDER RUMBLE STRIPS, 8 INCH	
STA	TO	STA	LENGTH	TON	SQ YD	SQ YD	TON	POUND	POUND	FOOT	SQ YD	TON	TON	SQ YD	TON	SQ YD	SQ YD	CU YD	FOOT	FOOT
<b>NORTH MARION STREET</b>																				
10+44.30	TO	19+36.96	893		75.7	453.5				2678.1	44.4	166.8	166.8		333.6		595.1	1.9		1242.0
19+36.96	TO	21+41.05	204.09	62.2	52.0		89.1	1021.0		1224.3				453.5	203.0	453.5	136.0	5.7	383.0	170.3
21+41.05	TO	24+96.54	355.49							22737.5		66.4	66.4		132.8		237.0			711.4
24+96.54	TO	30+53.75	557									104.1	104.1		208.2		371.5			1115.0
30+53.75	TO	39+74.94	921									172.0	172.0		344.0		614.1			1792.9
39+74.94	TO	59+00.00	1925									359.4	359.4		718.8		1283.4			3796.0
59+00.00	TO	63+00.00	400									74.8	74.8		149.6		266.7			824.0
63+00.00	TO	84+00.00	2100									392.0	392.0		784.0		1400.0			3978.0
84+00.00	TO	97+20.21	1320.21								44.4	251.5	251.5		503.0		880.1			2521.0
SUBTOTAL :				62.2	127.7	453.5	89.1	1021.0		26639.9	88.8	1587.0	1587.0		3377.0		5783.9	7.6	383.0	16150.6
ROUNDED TOTAL :				62.2	127.7	453.75	89	1021		26640	89	1587	1587		3377		5784	7.6	383	16151

**PAVEMENT MARKING SCHEDULE**

LOCATION			PAINT PAVEMENT MARKING - LINE 4"			PAINT PAVEMENT MARKING - LINE 24" SOLID WHITE	SHORT TERM PAVEMENT MARKING	SHORT TERM PAVEMENT MARKING REMOVAL
			SOLID WHITE	SOLID YELLOW	40' - 10' SKIP-DASH YELLOW			
STA	TO	STA	FOOT	FOOT	FOOT	FOOT	FOOT	SQ FT
<b>NORTH MARION STREET</b>								
10+44.30	TO	18+00.00	1511.4				75.6	18.9
18+00.00	TO	38+00.00	4000.0	4000.0			200.0	50.0
38+00.00	TO	57+00.00	3800.0	475.0			190.0	47.5
57+00.00	TO	65+00.00	1600.0	1600.0			80.0	20.0
65+00.00	TO	97+20.21	6440.4	805.1		12.0	334.0	104.5
SUBTOTAL :			17351.8	6880.1	188.9	12.0	879.6	240.9
ROUNDED TOTAL :				24421		12	880	241

MODEL: Default  
FILE NAME: H:\G:\Jobs\8111\_Jackson\_Co\_Master\_Task\_Curbs\8111\_01\_North\_Marion\_St\_TO\CAD\_Sheets\8111-Pht-Schedule.dgn



USER NAME = mobrien  
DESIGNED -  
DRAWN -  
PLOT SCALE = 100,0000' / in.  
CHECKED -  
PLOT DATE = 9/26/2023  
DATE -

DESIGNED -  
DRAWN -  
CHECKED -  
DATE -

REVISED -  
REVISED -  
REVISED -  
REVISED -

**JACKSON COUNTY  
HIGHWAY DEPARTMENT**

**SCHEDULE OF QUANTITIES**

SCALE: NTS      SHEET 1 OF 2 SHEETS      STA.      TO STA.

F.A. RTE.	SECTION	COUNTY	TOTAL SHEETS	SHEET NO.
	21-00186-00-R5	JACKSON	23	8
HMG JOB NO. 8111.100		CONTRACT NO. 99711		
		ILLINOIS	FED. AID PROJECT	U012(455)



**SIGN SCHEDULE**

LOCATION		MUTCD TYPE	SIZE (W X H) (IN X IN)	DESCRIPTION	SIGN PANEL - TYPE 1 SQ FT	TELESCOPING STEEL SIGN SUPPORT FT	REMOVE AND RE-ERECT EXISTING SIGN EACH	REMOVE SIGN PANEL ASSEMBLY - TYPE A EACH
STATION	OFFSET							
<b>NORTH MARION STREET</b>								
17+68.00	LT			NO PARKING			1.0	
19+95.00	LT			NO PARKING			1.0	
21+38.00	RT	W1-4	30 X 30	REVERSE CURVE	6.25	18.0		1.0
21+38.00	RT	W13-1P	18 X 18	CHEVRON	2.25			
21+72.18	LT	W1-8	18 X 24	CHEVRON	3.00	15.0		
22+37.48	LT	W1-8	18 X 24	CHEVRON	3.00	15.0		
23+02.78	LT	W1-8	18 X 24	CHEVRON	3.00	15.0		
23+67.97	LT	W1-8	18 X 24	CHEVRON	3.00	15.0		
29+00.00	LT	W1-4	30 X 30	REVERSE CURVE	6.25	15.0		
29+00.00	LT	W13-1P	18 X 18	ADVISORY SPEED	2.25			
32+50.00	RT	W1-2	30 X 30	CURVE	6.25	18.0		
32+50.00	RT	W13-1P	18 X 18	ADVISORY SPEED	2.25			
40+20.00	LT	W1-2	30 X 30	CURVE	6.25	18.0		1.0
40+20.00	LT	W13-1P	18 X 18	ADVISORY SPEED	2.25			
58+80.00	RT	W1-2	30 X 30	CURVE	6.25	18.0		1.0
58+80.00	RT	W13-1P	18 X 18	ADVISORY SPEED	2.25			
63+25.00	LT	W1-2	30 X 30	CURVE	6.25	18.0		
63+25.00	LT	W13-1P	18 X 18	ADVISORY SPEED	2.25			
64+87.00	LT							1.0
93+73.00	RT	W3-1	30 X 30	STOP AHEAD	6.25	18.0		
93+73.00	RT	W16-8P	46 X 12	STREET NAME	3.83			
96+98.00	RT			STOP			1.0	
<b>SUB-TOTAL</b>					<b>73.1</b>	<b>183.0</b>	<b>3.0</b>	<b>4.0</b>
<b>TOTAL</b>					<b>74</b>	<b>183</b>	<b>3</b>	<b>4</b>

**EARTHWORK SCHEDULE**

	EARTH EXCAVATION	EARTH EXCAVATION ADJUSTED FOR SHRINKAGE
	CU YD	CU YD
<b>GIANT CITY ROAD</b>		
STA. 19+37.00 TO STA. 21+41.05	385.0	289.0
<b>TOTALS</b>	<b>385</b>	<b>289</b>

MODEL: Default  
FILE NAME: U012(455)\_Jackson\_Co\_Master\_Task\_Order0111\_01\_North\_Marion\_Sign\_Schedule.dgn



USER NAME = mobrien  
PLOT SCALE = 100,0000 ' / in.  
PLOT DATE = 8/29/2023

DESIGNED -  
DRAWN -  
CHECKED -  
DATE -

REVISED -  
REVISED -  
REVISED -  
REVISED -

**JACKSON COUNTY  
HIGHWAY DEPARTMENT**

**SCHEDULE OF QUANTITIES**

SCALE: NTS      SHEET 2 OF 2 SHEETS      STA.      TO STA.

F.A. RTE.	SECTION	COUNTY	TOTAL SHEETS	SHEET NO.
	21-00186-00-R5	JACKSON	23	9
HMG JOB NO. 8111.100		CONTRACT NO. 99711		
ILLINOIS		FED. AID PROJECT U012(455)		

**CONTROL POINTS**

POINT #	STATION	OFFSET	NORTHING	EASTING	ELEVATION	DESCRIPTION
811115	16+24.4	17.4' RT	392,104.489	2,571,877.805	387.09	IRON ROD W/HMG CAP
811114	21+67.6	31.5' LT	392,646.266	2,571,815.312	390.24	IRON ROD W/HMG CAP

HORIZONTAL COORDINATES SHOWN IN PLANS ARE BASED ON NAD 83 ILLINOIS STATE PLANE WEST COORDINATE SYSTEM. VERTICAL COORDINATES ARE BASED ON NAVD 88.

Chain EX NMARION contains:  
2042 2043 2044 CUR EX NMARION 7 CUR EX NMARION 10 2045 CUR EX NMARION 15 CUR E-  
X NMARION 16 CUR EX NMARION 19 2046 2047 2048 2049 2050

Beginning chain EX NMARION description  
Feature: Geom Pr Centerline

Point 2042 N 391,480.2301 E 2,571,871.3543 Sta 10+00.00  
Course from 2042 to 2043 N 0° 54' 22.57" W Dist 490.8263  
Point 2043 N 391,970.9950 E 2,571,863.5910 Sta 14+90.83  
Course from 2043 to 2044 N 1° 41' 57.80" W Dist 268.8890  
Point 2044 N 392,239.7657 E 2,571,855.6169 Sta 17+59.72  
Course from 2044 to PC EX NMARION 7 N 1° 19' 50.22" W Dist 412.4688

Curve Data  
\*-----\*

Curve EX NMARION 7  
P.I. Station 22+73.23 N 392,753.1430 E 2,571,843.6923  
Delta = 34° 57' 47.52" (RT)  
Degree = 17° 51' 29.15"  
Tangent = 101.0469  
Length = 195.7834  
Radius = 320.8392  
External = 15.5360  
Long Chord = 192.7599  
Mid. Ord. = 14.8184  
P.C. Station 21+72.18 N 392,652.1233 E 2,571,846.0388  
P.T. Station 23+67.97 N 392,837.2753 E 2,571,899.6587  
C.C. N 392,659.5737 E 2,572,166.7915  
Back = N 1° 19' 50.22" W  
Ahead = N 33° 37' 57.31" E  
Chord Bear = N 16° 09' 03.55" E

Course from PT EX NMARION 7 to PC EX NMARION 10 N 33° 37' 57.31" E Dist 128.5767

Curve Data  
\*-----\*

Curve EX NMARION 10  
P.I. Station 26+45.12 N 393,068.0311 E 2,572,053.1617  
Delta = 26° 17' 08.30" (LT)  
Degree = 9° 00' 16.49"  
Tangent = 148.5720  
Length = 291.9140  
Radius = 636.2958  
External = 17.1152  
Long Chord = 289.3608  
Mid. Ord. = 16.6669  
P.C. Station 24+96.54 N 392,944.3291 E 2,571,970.8728  
P.T. Station 27+88.46 N 393,215.3834 E 2,572,072.1607  
C.C. N 393,296.7512 E 2,571,441.0889  
Back = N 33° 37' 57.31" E  
Ahead = N 7° 20' 49.01" E  
Chord Bear = N 20° 29' 23.16" E

Course from PT EX NMARION 10 to 2045 N 7° 20' 49.01" E Dist 265.2961

Point 2045 N 393,478.5014 E 2,572,106.0861 Sta 30+53.75

Course from 2045 to PC EX NMARION 15 N 6° 45' 32.68" E Dist 311.2466

Curve Data  
\*-----\*

Curve EX NMARION 15  
P.I. Station 34+92.47 N 393,914.1670 E 2,572,157.7205  
Delta = 20° 36' 46.31" (RT)  
Degree = 8° 10' 25.87"  
Tangent = 127.4681  
Length = 252.1805  
Radius = 700.9642  
External = 11.4956  
Long Chord = 250.8228  
Mid. Ord. = 11.3101  
P.C. Station 33+65.00 N 393,787.5848 E 2,572,142.7181  
P.T. Station 36+17.18 N 394,027.3638 E 2,572,216.3258  
C.C. N 393,705.0850 E 2,572,838.8106  
Back = N 6° 45' 32.68" E  
Ahead = N 27° 22' 18.99" E  
Chord Bear = N 17° 03' 55.84" E

Curve Data  
\*-----\*

Curve EX NMARION 16  
P.I. Station 37+96.60 N 394,186.6967 E 2,572,298.8172  
Delta = 10° 54' 32.14" (RT)  
Degree = 3° 02' 57.33"  
Tangent = 179.4208  
Length = 357.7569  
Radius = 1,879.0074  
External = 8.5467  
Long Chord = 357.2167  
Mid. Ord. = 8.5080  
P.C. Station 36+17.18 N 394,027.3638 E 2,572,216.3258  
P.T. Station 39+74.94 N 394,327.5390 E 2,572,409.9714  
C.C. N 393,163.4620 E 2,573,884.9608  
Back = N 27° 22' 18.99" E  
Ahead = N 38° 16' 51.14" E  
Chord Bear = N 32° 49' 35.06" E

Course from PT EX NMARION 16 to PC EX NMARION 19 N 38° 16' 51.14" E Dist 2,008.7412

Curve Data  
\*-----\*

Curve EX NMARION 19  
P.I. Station 60+90.49 N 395,988.2138 E 2,573,720.5933  
Delta = 37° 41' 39.30" (LT)  
Degree = 18° 18' 36.57"  
Tangent = 106.8133  
Length = 205.8652  
Radius = 312.9180  
External = 17.7280  
Long Chord = 202.1727  
Mid. Ord. = 16.7774  
P.C. Station 59+83.68 N 395,904.3672 E 2,573,654.4207  
P.T. Station 61+89.54 N 396,095.0215 E 2,573,721.6869  
C.C. N 396,098.2252 E 2,573,408.7853  
Back = N 38° 16' 51.14" E  
Ahead = N 0° 35' 11.83" E  
Chord Bear = N 19° 26' 01.48" E

Course from PT EX NMARION 19 to 2046 N 0° 35' 11.83" E Dist 831.1679

Point 2046 N 396,926.1458 E 2,573,730.1966 Sta 70+20.71

Course from 2046 to 2047 N 0° 13' 09.61" E Dist 776.9799

Point 2047 N 397,703.1200 E 2,573,733.1710 Sta 77+97.69

Course from 2047 to 2048 N 0° 09' 30.02" E Dist 999.0813

Point 2048 N 398,702.1975 E 2,573,735.9320 Sta 87+96.77

Course from 2048 to 2049 N 0° 04' 49.88" W Dist 246.1947

Point 2049 N 398,948.3920 E 2,573,735.5860 Sta 90+42.97

Course from 2049 to 2050 N 0° 14' 09.72" E Dist 688.0658

Point 2050 N 399,636.4519 E 2,573,738.4205 Sta 97+31.03

Ending chain EX NMARION description

MODEL: Default  
FILE NAME: 811111\_Jackson\_Co\_Marter\_Task\_Order81111\_01\_North\_Marion\_Ss\_TO10CAD\_Sheets81111-jhrt-ATB.dgn



USER NAME = mobrien	DESIGNED -	REVISED -
PLOT SCALE = 100,0000' / in.	DRAWN -	REVISED -
PLOT DATE = 8/29/2023	CHECKED -	REVISED -
	DATE -	REVISED -

**JACKSON COUNTY  
HIGHWAY DEPARTMENT**

**ALIGNMENTS, TIES AND  
BENCHMARKS**

SCALE: NTS SHEET 1 OF 1 SHEETS STA. TO STA.

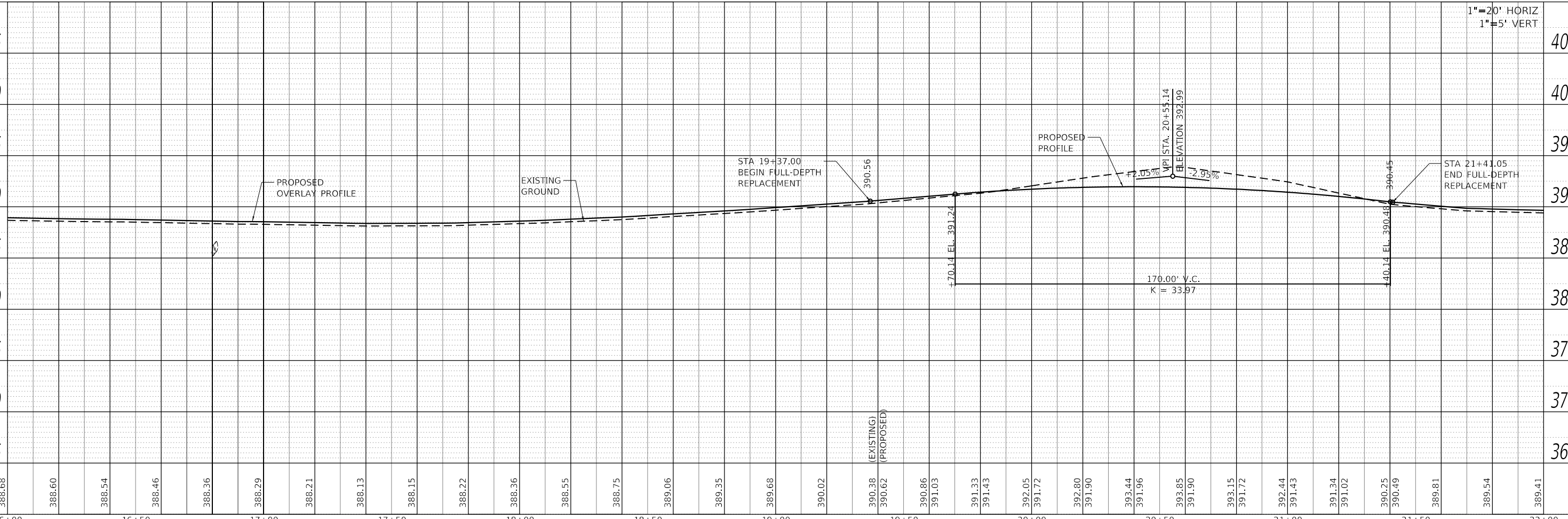
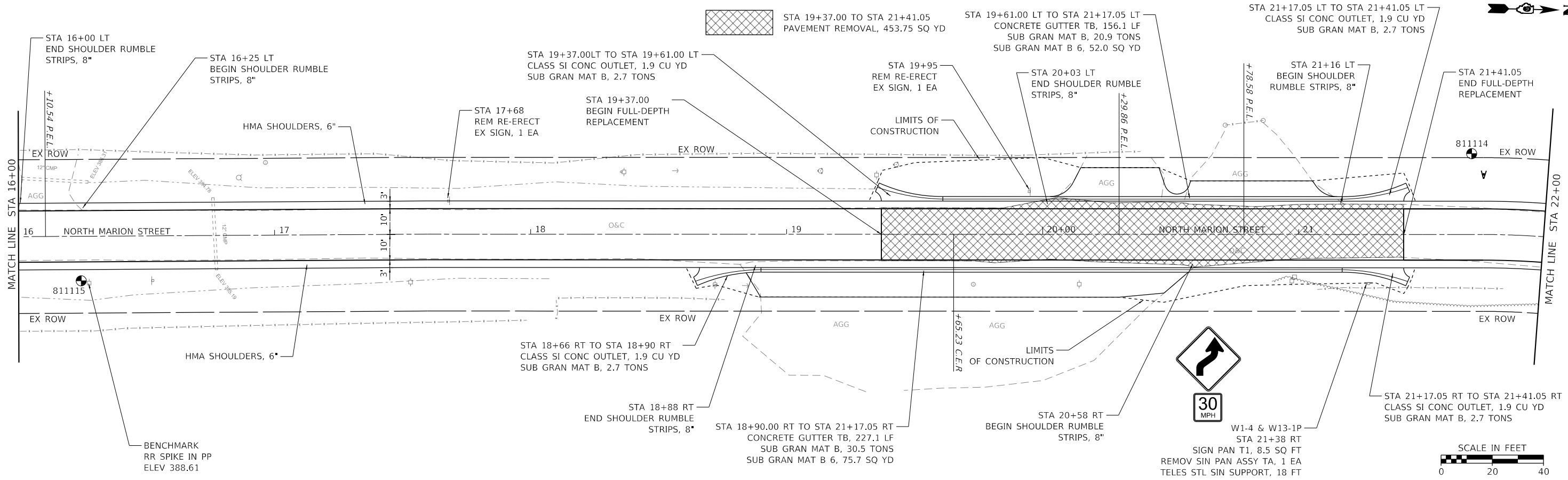
F.A. RTE.	SECTION	COUNTY	TOTAL SHEETS	SHEET NO.
	21-00186-00-R5	JACKSON	23	10
HMG JOB NO. 8111.100		CONTRACT NO. 99711		
		ILLINOIS	FED. AID PROJECT	U012(455)



PLAN	SURVEYED	DATE
	PLOTTED	BY
	ALIGNMENT CHECKED	
	GRADE CHECKED	
	STRUCTURE NOTATIONS CHECKED	
	NOTE BOOK NO.	
	CADD FILE NAME	

PROFILE	SURVEYED	DATE
	PLOTTED	BY
	GRADES CHECKED	
	STRUCTURE NOTATIONS CHECKED	
	NOTE BOOK NO.	
	CADD FILE NAME	

MODEL: Default  
FILE NAME: H31111\_Jackson\_Co\_Master\_Task\_Order(3)11\_01\_North Marion\_Sc\_101CAD\_Sheets(8)11-18-23.dgn



388.68	388.60	388.54	388.46	388.36	388.29	388.21	388.13	388.15	388.22	388.36	388.55	388.75	389.06	389.35	389.68	390.02	390.38 (EXISTING)	390.62 (PROPOSED)	390.86	391.03	391.33	391.43	392.05	391.72	392.80	391.90	393.44	391.96	393.85	391.90	393.15	391.72	392.44	391.43	391.34	391.02	390.25	390.49	389.81	389.54	389.41
16+00	16+50	17+00	17+50	18+00	18+50	19+00	19+50	20+00	20+50	21+00	21+50	22+00																													



USER NAME = mobrien	DESIGNED -	REVISED -
PLOT SCALE = 40.0000' / in.	DRAWN -	REVISED -
PLOT DATE = 8/29/2023	CHECKED -	REVISED -
	DATE -	REVISED -

**JACKSON COUNTY  
HIGHWAY DEPARTMENT**

**PLAN & PROFILE  
NORTH MARION STREET**

SCALE: 1" = 20' SHEET 2 OF 3 SHEETS STA. 16+00.00 TO STA. 22+00.00

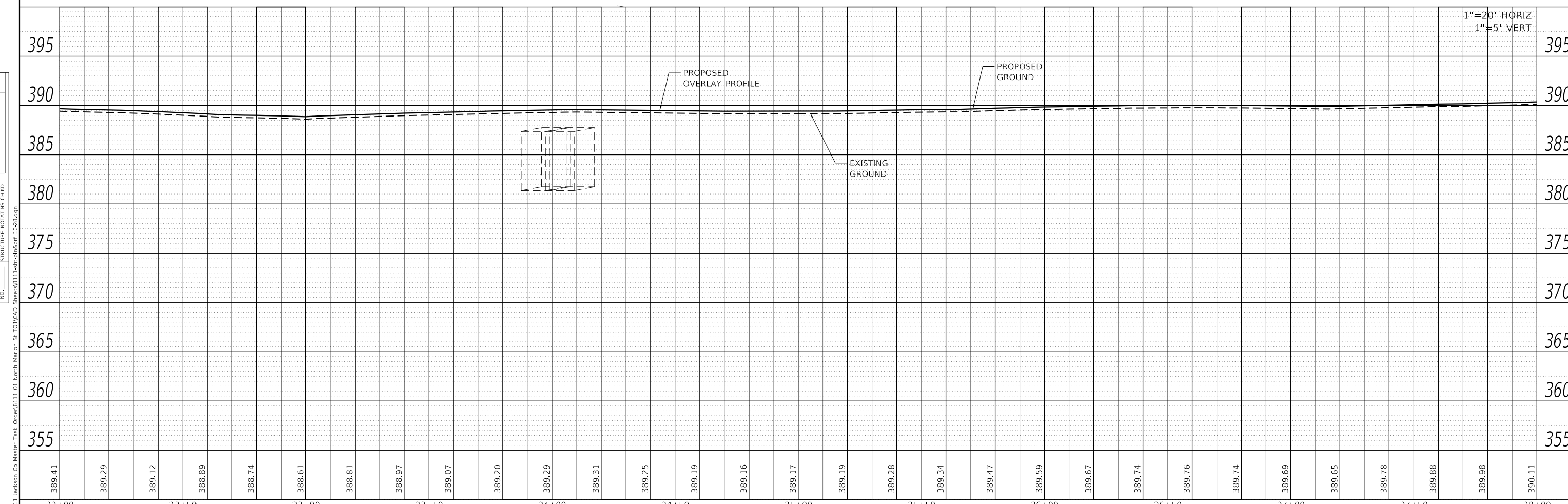
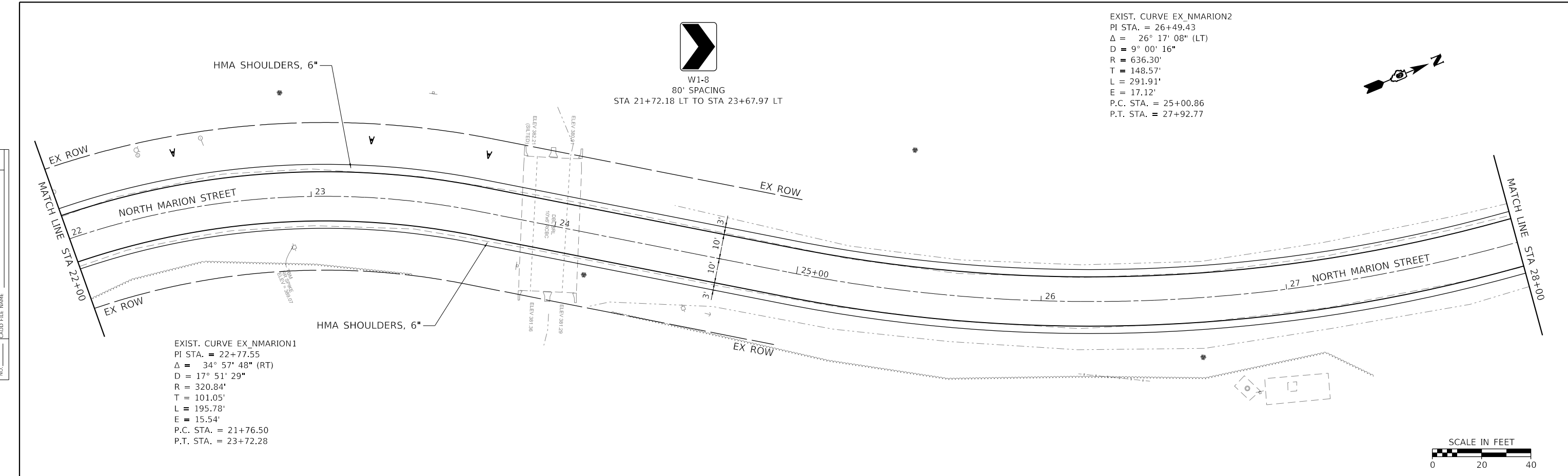
F.A.P. RTE.	SECTION	COUNTY	TOTAL SHEETS	SHEET NO.
HMG JOB NO. 8111.100	21-00186-00-R5	JACKSON	23	12
ILLINOIS		FED. AID PROJECT		U012(455)



W1-4 & W13-1P  
STA 21+38 RT  
SIGN PAN T1, 8.5 SQ FT  
REMOV SIN PAN ASSY TA, 1 EA  
TELES STL SIN SUPPORT, 18 FT

PLAN	SURVEYED	DATE
	PLOTTED	
	ALIGNED	
	CHECKED	
	FILED	
	CAD FILE NAME	
	NO.	

PROFILE	SURVEYED	DATE
	PLOTTED	
	GRADES	
	CHECKED	
	STRUCTURE	
	NOTATION	
	NO.	

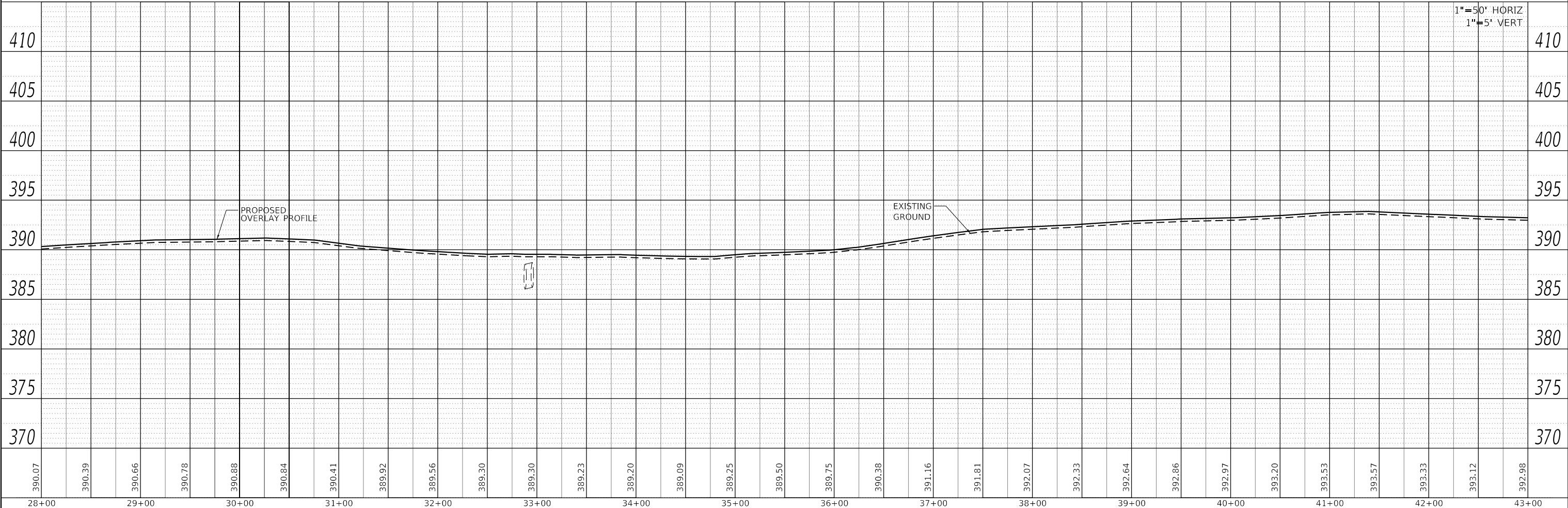
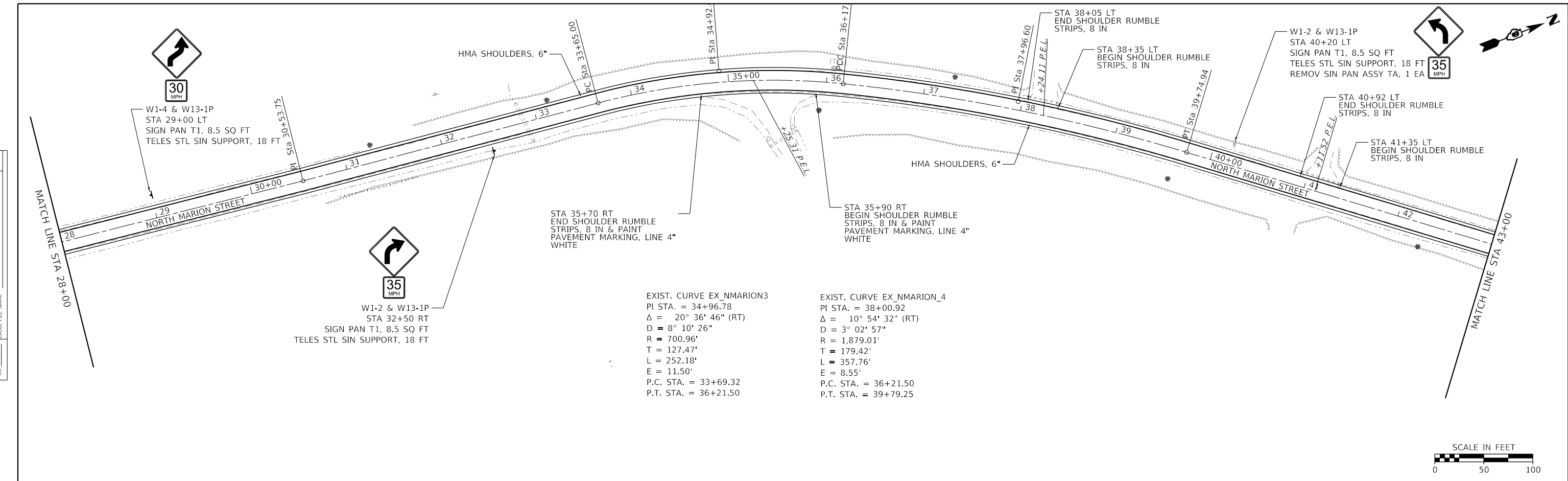


 IL PROF DESIGN FIRM 184.000899	USER NAME = mobrien	DESIGNED -	REVISED -	<b>JACKSON COUNTY HIGHWAY DEPARTMENT</b>	<b>PLAN &amp; PROFILE NORTH MARION STREET</b>		F.A.P. RTE.	SECTION	COUNTY	TOTAL SHEETS	SHEET NO.
	PLOT SCALE = 40.0000' / in.	CHECKED -	REVISED -		HMG JOB NO. 8111.100	21-00186-00-R5	JACKSON	23	13		
	PLOT DATE = 8/29/2023	DATE -	REVISED -		CONTRACT NO. 99711	ILLINOIS FED. AID PROJECT U012(455)					

SCALE: 1" = 20' SHEET 3 OF 3 SHEETS STA. 22+00.00 TO STA. 28+00.00

PLAN	SURVEYED	DATE
	PLOTTED	BY
	ALIGNED	CHECKED
	NOTE BOOK	NO.

PROFILE	SURVEYED	DATE
	PLOTTED	BY
	GRADES CHECKED	CHECKED
	NOTE BOOK	NO.



USER NAME = mobrien	DESIGNED -	REVISED -
PLOT SCALE = 100.0000' / in.	DRAWN -	REVISED -
PLOT DATE = 8/29/2023	CHECKED -	REVISED -
	DATE -	REVISED -

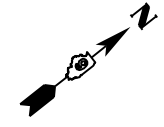
**STATE OF ILLINOIS**  
**DEPARTMENT OF TRANSPORTATION**

**PLAN & PROFILE**  
**NORTH MARION STREET**

SCALE: 1" = 50' SHEET 4 OF 8 SHEETS STA. TO STA.

F.A. RTE.	SECTION	COUNTY	TOTAL SHEETS	SHEET NO.
	21-00186-00-R5	JACKSON	23	14
HMG JOB NO. 8111.100		CONTRACT NO. 99711		
ILLINOIS		FED. AID PROJECT U012(455)		

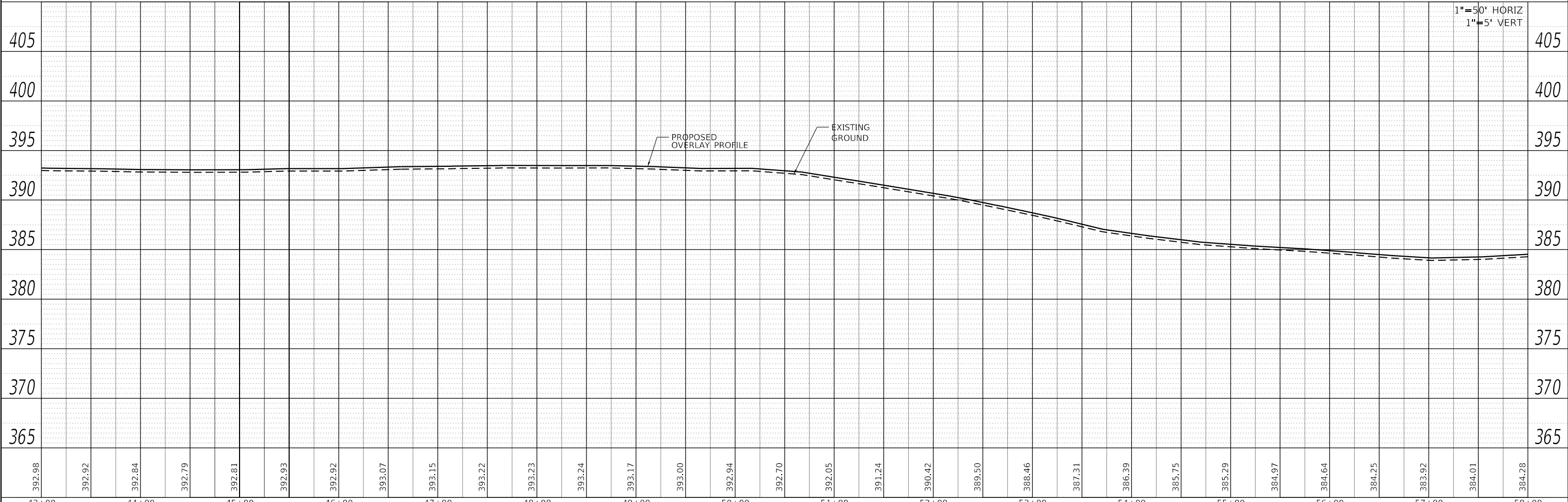
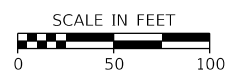
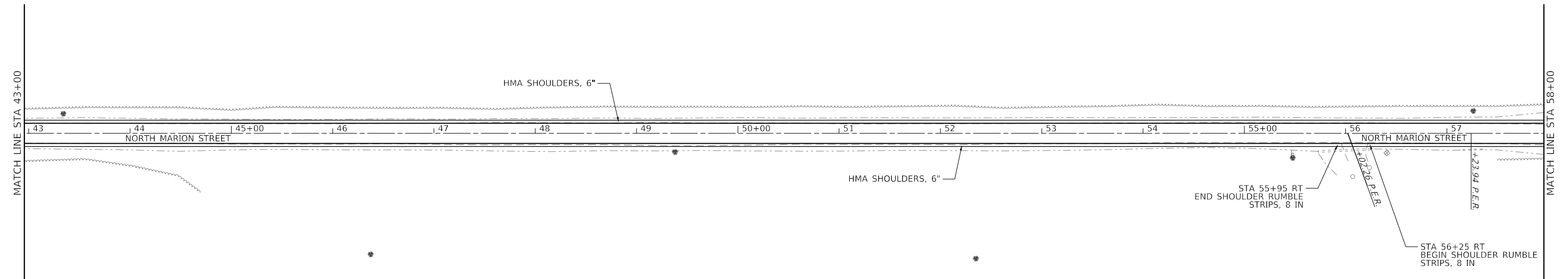
MODEL: Default  
 FILE NAME: H:\31111 Junction\_Co\_Master\_Task\_Order\31111\_01\_North Marion\_Sc\_101\CAD\_Sheets\31111\hmg\plan\prf\_28-28.dgn



PLAN	SURVEYED	BY	DATE
	PLOTTED		
NOTE BOOK NO.	ALIGNMENT CHECKED		
	GRADES CHECKED		
	STRUCTURE NOTATIONS CHECKED		
	CADD FILE NAME		

PROFILE	SURVEYED	BY	DATE
	PLOTTED		
NOTE BOOK NO.	GRADES CHECKED		
	STRUCTURE NOTATIONS CHECKED		

MODEL: Default  
 FILE NAME: H:\31111\_Jackson\_Co\_Master\_Task\_Order\31111\_01\_North Marion\_Sc\_101\CAD\_Sheets\31111-hatch\p1prf\_28-28.dgn



392.98	392.92	392.84	392.79	392.81	392.93	392.92	393.07	393.15	393.22	393.23	393.24	393.17	393.00	392.94	392.70	392.05	391.24	390.42	389.50	388.46	387.31	386.39	385.75	385.29	384.97	384.64	384.25	383.92	384.01	384.28
43+00	44+00	45+00	46+00	47+00	48+00	49+00	50+00	51+00	52+00	53+00	54+00	55+00	56+00	57+00	58+00															



USER NAME = mobrien	DESIGNED -	REVISED -
PLOT SCALE = 100.0000' / in.	DRAWN -	REVISED -
PLOT DATE = 8/29/2023	CHECKED -	REVISED -
	DATE -	REVISED -

**STATE OF ILLINOIS  
DEPARTMENT OF TRANSPORTATION**

**PLAN & PROFILE  
NORTH MARION STREET**

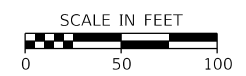
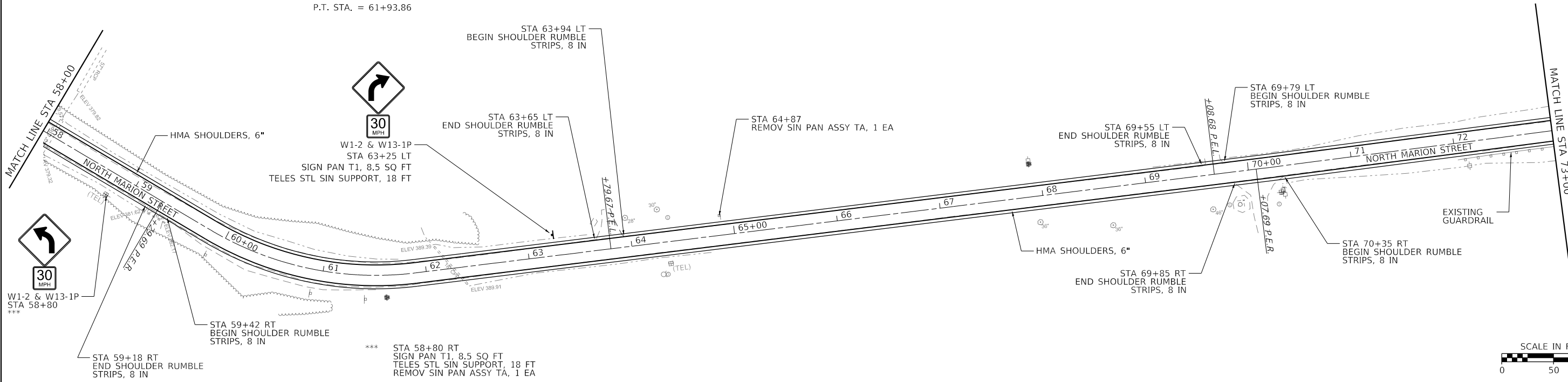
SCALE: 1" = 50'    SHEET 5 OF 8 SHEETS    STA.    TO STA.

F.A. RTE.	SECTION	COUNTY	TOTAL SHEETS	SHEET NO.
	21-00186-00-R5	JACKSON	23	15
HMG JOB NO. 8111.100		CONTRACT NO. 99711		
ILLINOIS FED. AID PROJECT U012(455)				

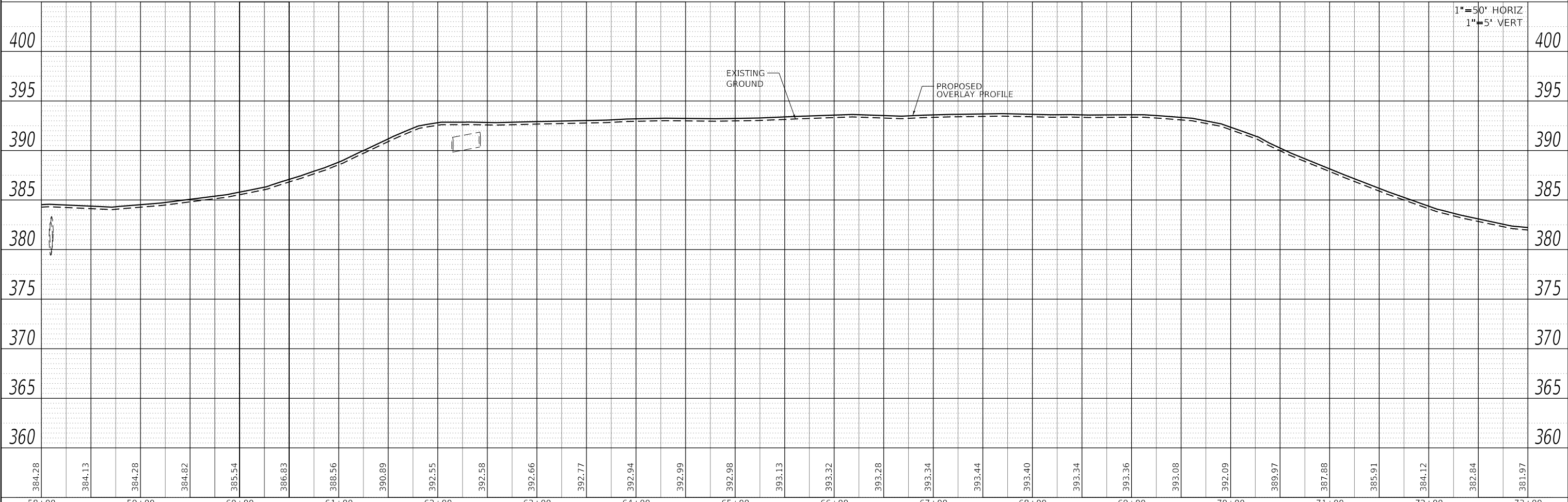
EXIST. CURVE EX\_NMARIONS  
 PI STA. = 60+94.81  
 $\Delta = 37^\circ 41' 39"$  (LT)  
 $D = 18^\circ 18' 37"$   
 $R = 312.92'$   
 $T = 106.81'$   
 $L = 205.87'$   
 $E = 17.73'$   
 P.C. STA. = 59+87.99  
 P.T. STA. = 61+93.86



DATE	
BY	
PLAN	
SURVEYED	
PLOTTED	
ALIGNMENT CHECKED	
NOTE BOOK NO.	
CADD FILE NAME	



DATE	
BY	
PROFILE	
SURVEYED	
PLOTTED	
GRADES CHECKED	
NOTE BOOK NO.	
STRUCTURE NOTATION	



1" = 50' HORIZ  
 1" = 5' VERT

384.28	384.13	384.28	384.82	385.54	386.83	388.56	390.89	392.55	392.58	392.66	392.77	392.94	392.99	392.98	393.13	393.32	393.28	393.34	393.44	393.40	393.34	393.36	393.08	392.09	389.97	387.88	385.91	384.12	382.84	381.97	
58+00	59+00	60+00	61+00	62+00	63+00	64+00	65+00	66+00	67+00	68+00	69+00	70+00	71+00	72+00	73+00																



USER NAME = mobrien	DESIGNED -	REVISED -
PLOT SCALE = 100,0000' / in.	DRAWN -	REVISED -
PLOT DATE = 8/29/2023	CHECKED -	REVISED -
	DATE -	REVISED -

STATE OF ILLINOIS  
 DEPARTMENT OF TRANSPORTATION

PLAN & PROFILE	
NORTH MARION STREET	
SCALE: 1" = 50'	SHEET 6 OF 8 SHEETS STA. TO STA.

F.A. RTE.	SECTION	COUNTY	TOTAL SHEETS	SHEET NO.
	21-00186-00-R5	JACKSON	23	16
HMG JOB NO. 8111.100		CONTRACT NO. 99711		
ILLINOIS FED. AID PROJECT U012(455)				

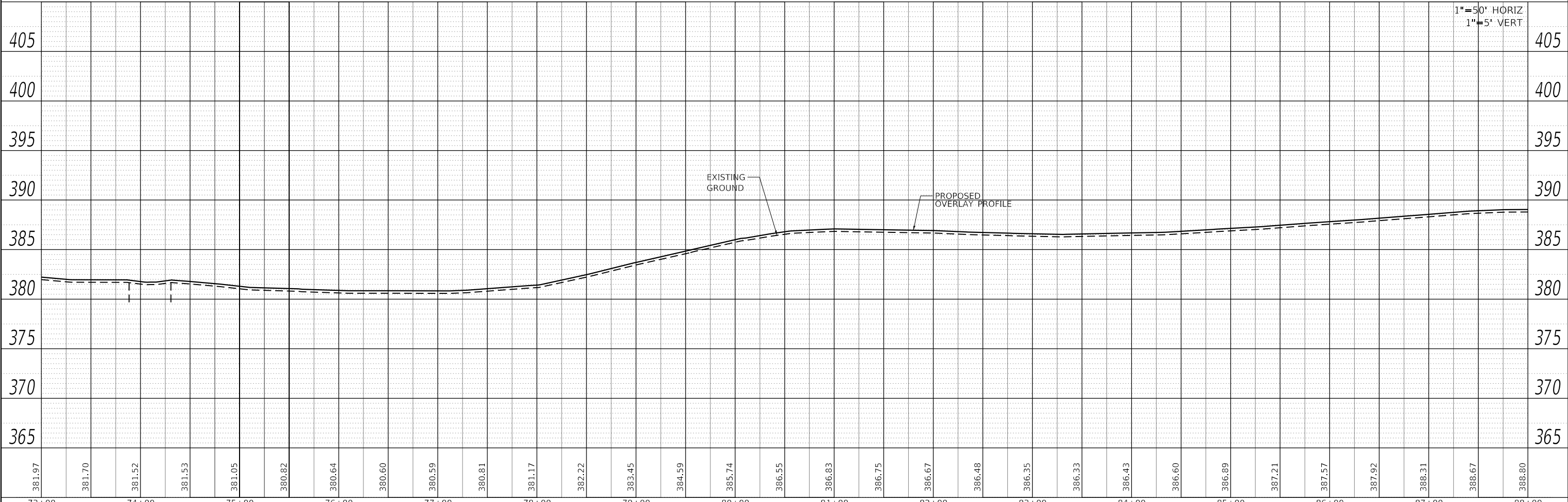
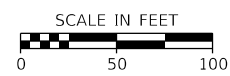
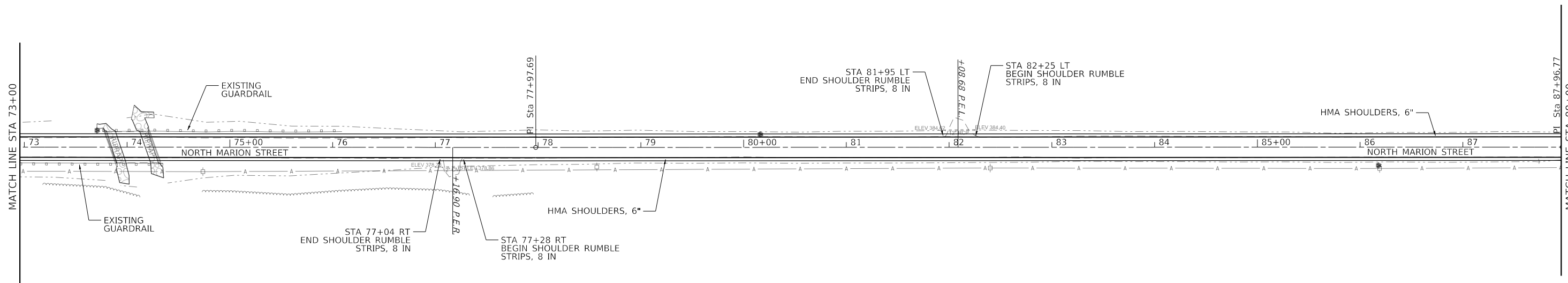




PLAN	SURVEYED	BY	DATE
	PLOTTED		
NOTE BOOK NO.	ALIGNMENT CHECKED		
	GRADE CHECKED		
	STRUCTURE NOTATION CHECKED		
	CADD FILE NAME		

PROFILE	SURVEYED	BY	DATE
	PLOTTED		
NOTE BOOK NO.	GRADES CHECKED		
	STRUCTURE NOTATION CHECKED		

MODEL: Default  
 FILE NAME: H:\31111\_Jackson\_Co\_Master\_Task\_Order\31111\_01\_North Marion\_Sc\_101\CAD\_Sheets\31111-hair\p1prf\_28-28.dgn



381.97	381.70	381.52	381.53	381.05	380.82	380.64	380.60	380.59	380.81	381.17	382.22	383.45	384.59	385.74	386.55	386.83	386.75	386.67	386.48	386.35	386.33	386.43	386.60	386.89	387.21	387.57	387.92	388.31	388.67	388.80		
73+00	74+00	75+00	76+00	77+00	78+00	79+00	80+00	81+00	82+00	83+00	84+00	85+00	86+00	87+00	88+00																	



USER NAME = mobrien	DESIGNED -	REVISED -
PLOT SCALE = 100.0000' / in.	DRAWN -	REVISED -
PLOT DATE = 8/29/2023	CHECKED -	REVISED -
	DATE -	REVISED -

STATE OF ILLINOIS  
 DEPARTMENT OF TRANSPORTATION

PLAN & PROFILE  
 NORTH MARION STREET

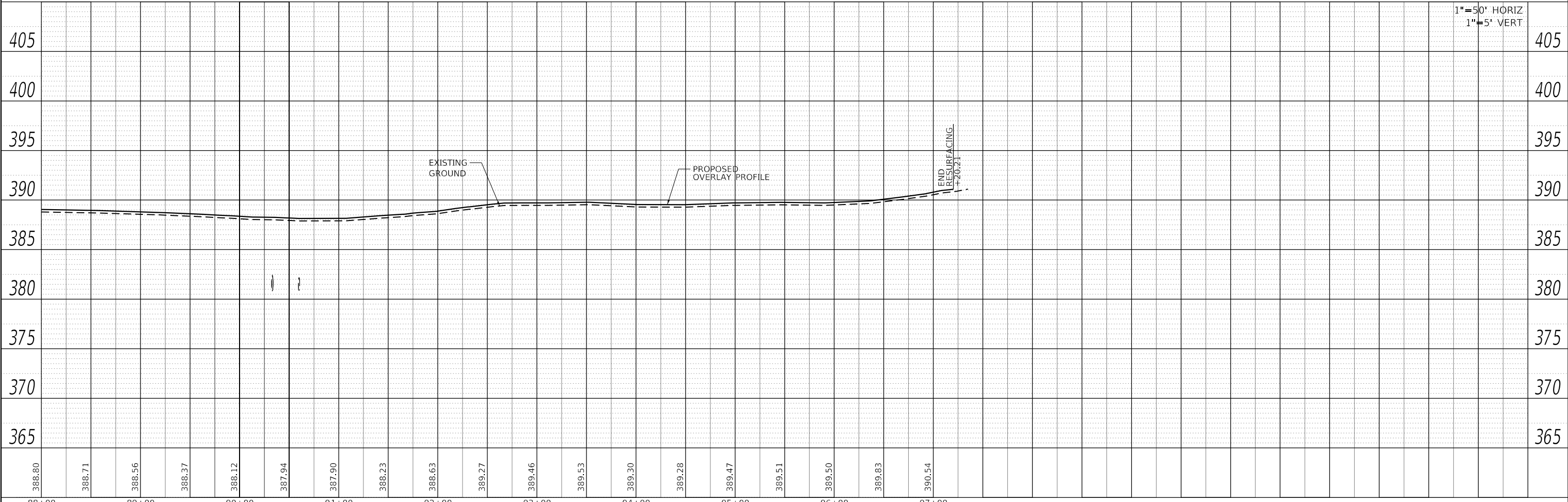
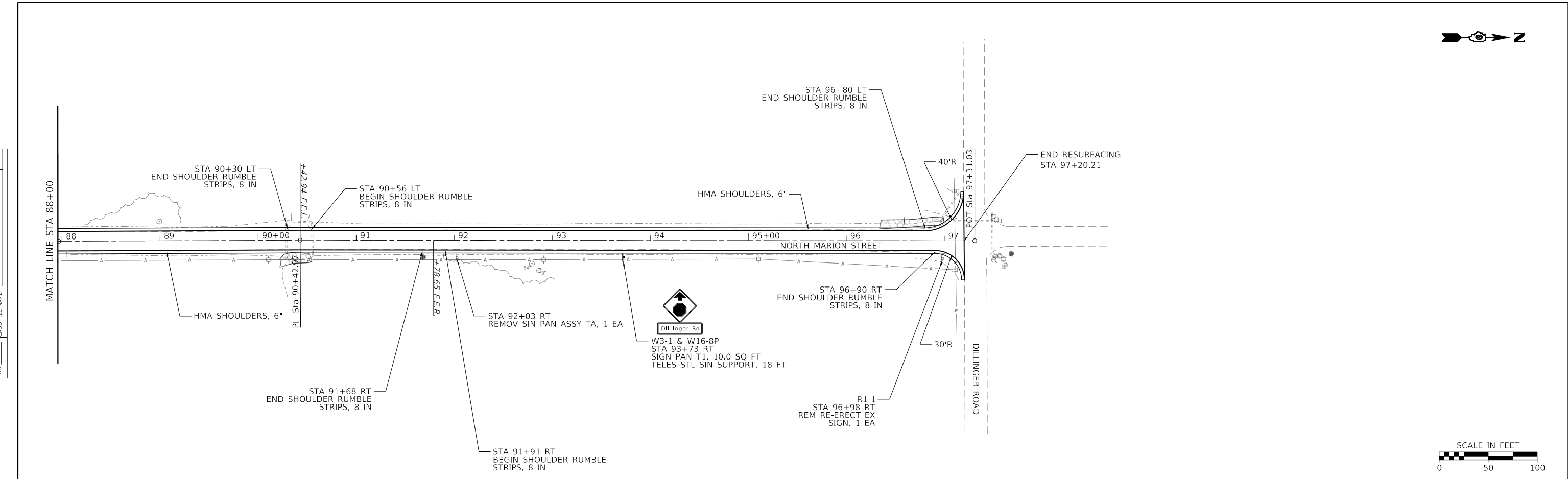
SCALE: 1" = 50' SHEET 7 OF 8 SHEETS STA. TO STA.

F.A. RTE.	SECTION	COUNTY	TOTAL SHEETS	SHEET NO.
	21-00186-00-R5	JACKSON	23	17
HMG JOB NO. 8111.100		CONTRACT NO. 99711		
ILLINOIS FED. AID PROJECT U012(455)				



PLAN	SURVEYED	DATE
	PLOTTED	
	ALIGNMENT CHECKED	
	GRADES CHECKED	
	STRUCTURE NOTATIONS CHECKED	
	NO. _____	
	FILE NAME _____	

PROFILE	SURVEYED	DATE
	PLOTTED	
	GRADES CHECKED	
	STRUCTURE NOTATIONS CHECKED	
	NO. _____	
	FILE NAME _____	



**HMG**  
ENGINEERS  
IL PROF DESIGN FIRM 184.000899

USER NAME = mobrien	DESIGNED -	REVISED -
PLOT SCALE = 100.0000' / in.	DRAWN -	REVISED -
PLOT DATE = 8/29/2023	CHECKED -	REVISED -
	DATE -	REVISED -

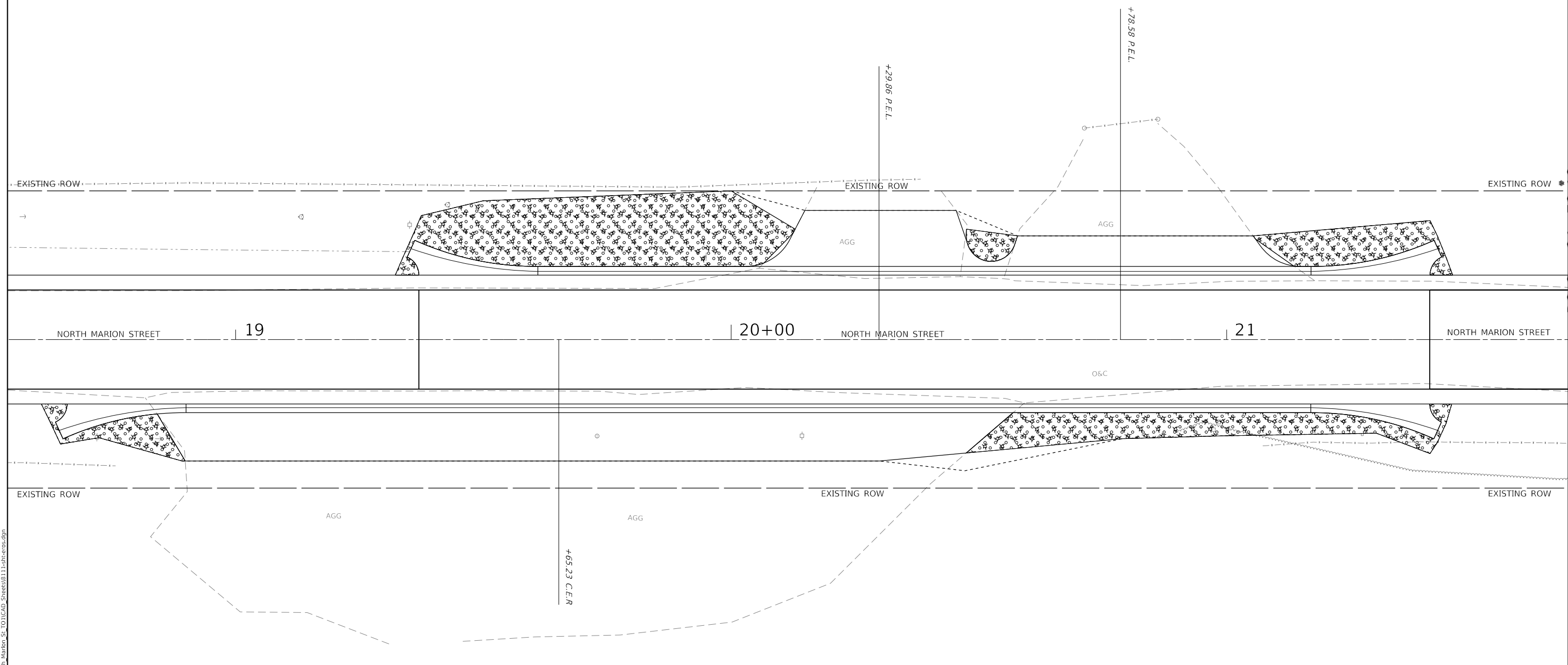
**STATE OF ILLINOIS  
DEPARTMENT OF TRANSPORTATION**

**PLAN & PROFILE  
NORTH MARION STREET**

SCALE: 1" = 50'    SHEET 8 OF 8 SHEETS    STA.    TO STA.

F.A. RTE.	SECTION	COUNTY	TOTAL SHEETS	SHEET NO.
	21-00186-00-R5	JACKSON	23	18
HMG JOB NO. 8111.100			CONTRACT NO. 99711	
ILLINOIS FED. AID PROJECT U012(455)				

MODEL: Default  
FILE NAME: H:\31111 Jackson Co Master Task Order\31111 North Marion St\_101\CAD Sheets\31111-north-marion-st-28-28.dgn



MODEL: Default  
 FILE NAME: I:\81111\_Jackson\_Co\_Master\_Task\_Order\81111\_01\_North\_Marion\_Ss\_TO\CAD\_Sheets\81111-ehc-arcs.dgn

**HMG**  
ENGINEERS  
IL PROF DESIGN FIRM 184,000899

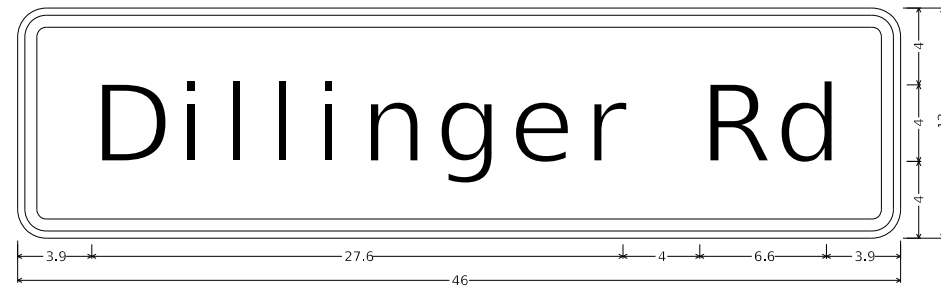
USER NAME = mobrien	DESIGNED -	REVISED -
PLOT SCALE = 20,000' / in.	DRAWN -	REVISED -
PLOT DATE = 8/29/2023	CHECKED -	REVISED -
	DATE -	REVISED -

**JACKSON COUNTY  
HIGHWAY DEPARTMENT**

**EROSION CONTROL & SEEDING  
PLAN**

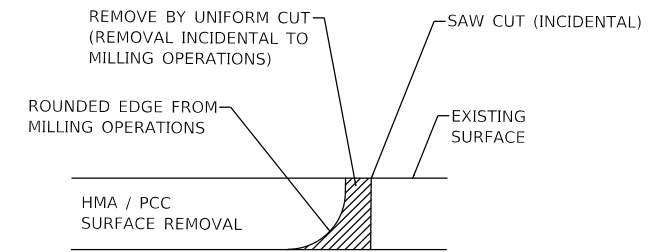
SCALE: SHEET OF SHEETS STA. TO STA.

F.A. RTE.	SECTION	COUNTY	TOTAL SHEETS	SHEET NO.
	21-00186-00-RS	JACKSON	23	19
HMG JOB 8111.100		CONTRACT NO. 99711		
		ILLINOIS	FED. AID PROJECT	U012(455)

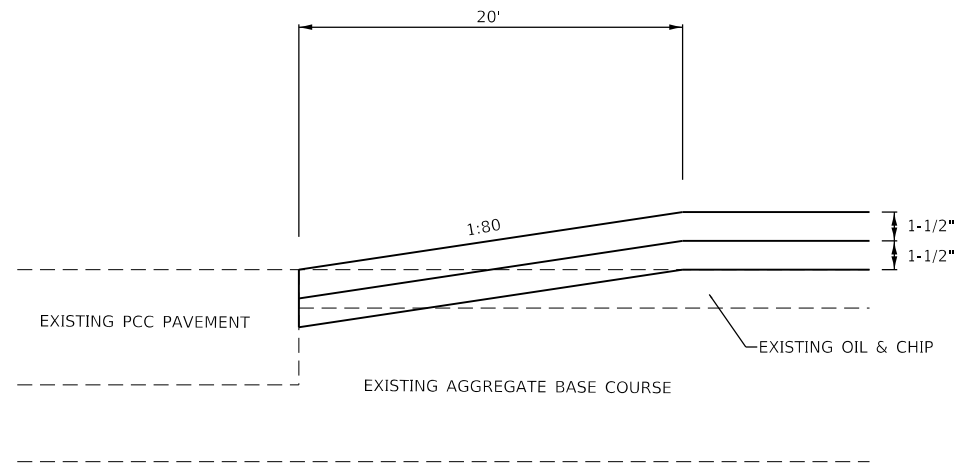


1.5" Radius, 0.6" Border, 0.4" Indent, Black on Yellow;  
 "Dillinger Rd", E Mod 2K;  
 Table of widths and spaces

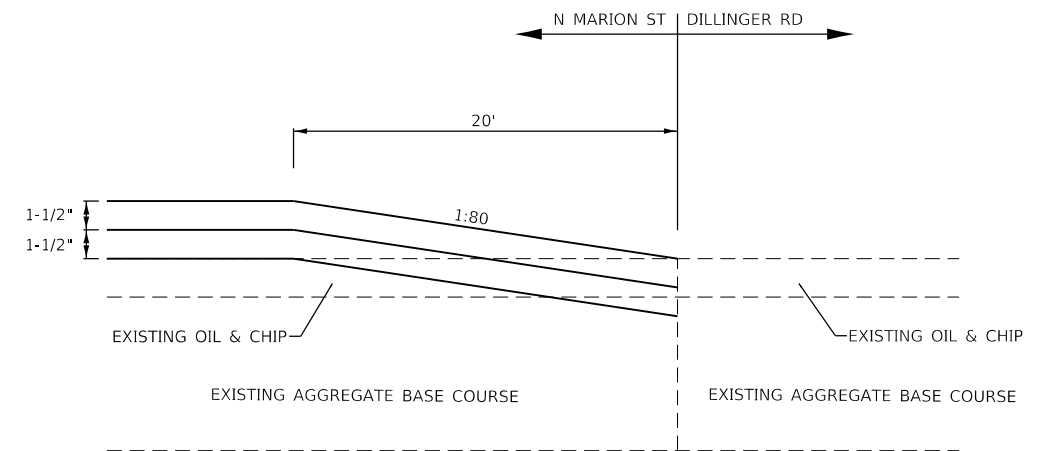
D	i	l	i	n	g	e	r	R	d											
3.9	3.2	1.2	0.8	1.6	0.8	1.6	0.8	1.6	2.6	1.3	2.6	1.3	2.6	1.2	2.0	4.0	3.3	0.7	2.6	3.9



NOTE:  
 WHEN MILLING OPERATIONS PRODUCE A ROUNDED EDGE,  
 THEN A SAW CUT SHALL BE USED TO MANUFACTURE  
 A PERPENDICULAR EDGE AS SHOWN IN THE DETAIL.  
 THE ENGINEER SHALL BE THE SOLE JUDGE  
 CONCERNING THE USE OF THIS DETAIL.



**TERMINATING AT EXISTING  
 PCC PAVEMENT**  
 ELEVATION VIEW



**TERMINATING AT EXISTING  
 OIL & CHIP**  
 ELEVATION VIEW

**BUTT JOINT DETAILS**

MODEL: Default  
 FILE NAME: U012(455)\_Jackson\_Co\_Master\_Task\_Order0111\_01\_North\_Marion\_St\_TO1CAD\_Sheets0111-Subdetail.dgn



USER NAME = mobrien	DESIGNED -	REVISED -
PLOT SCALE = 100,0000' / in.	DRAWN -	REVISED -
PLOT DATE = 8/29/2023	CHECKED -	REVISED -
	DATE -	REVISED -

**JACKSON COUNTY  
 HIGHWAY DEPARTMENT**

**SPECIAL DETAILS**

SCALE: NTS SHEET 1 OF 1 SHEETS STA. TO STA.

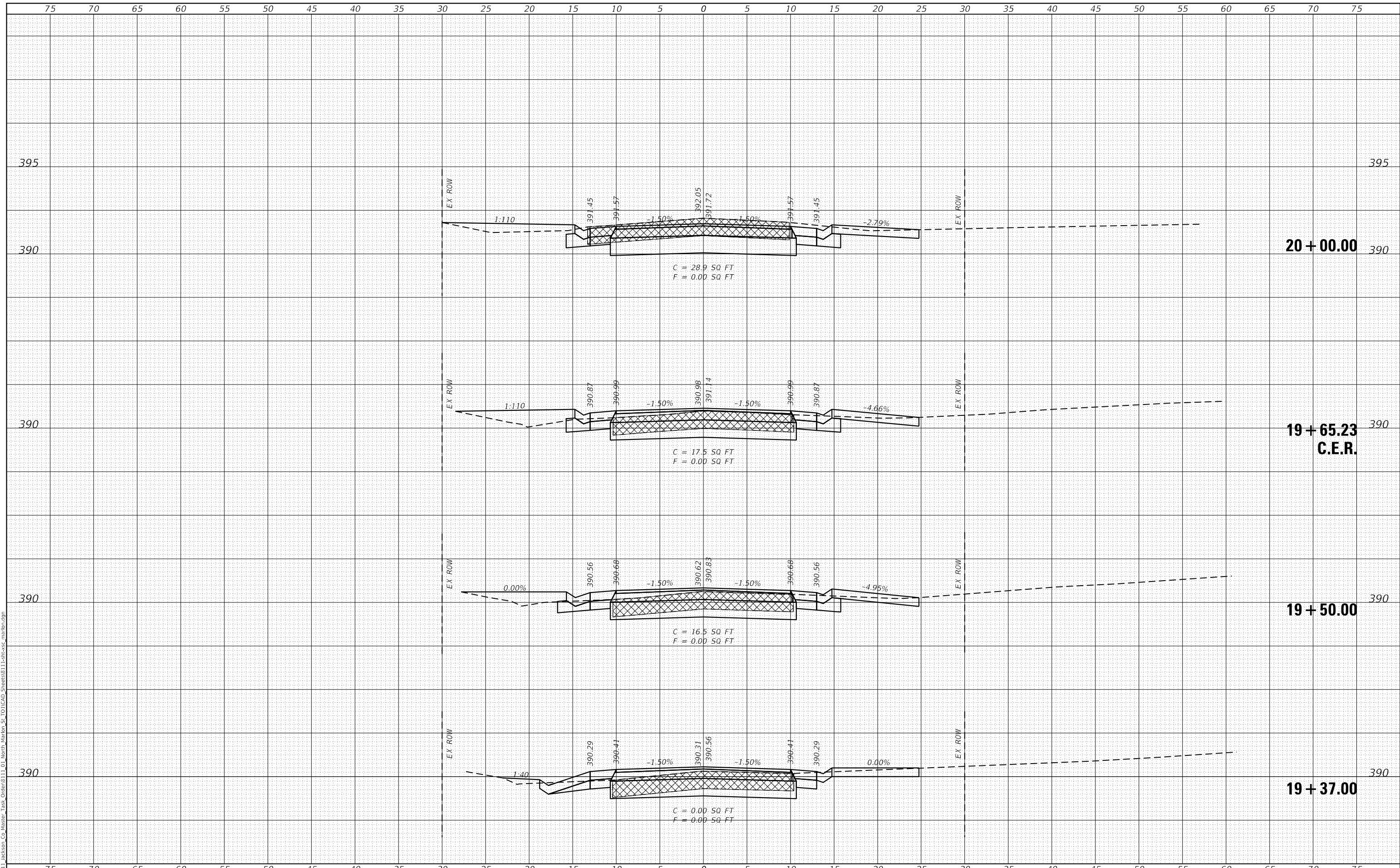
F.A. RTE.	SECTION	COUNTY	TOTAL SHEETS	SHEET NO.
	21-00186-00-R5	JACKSON	23	20
CONTRACT NO. 99711			U012(455)	

ILLINOIS FED. AID PROJECT U012(455)

DATE	
BY	
SURVEYED	
PLOTTED	
TEMPLATE	
AREAS	
CHECKED	
FINAL SURVEY	
NOTE BOOK	
NO.	

DATE	
BY	
SURVEYED	
PLOTTED	
TEMPLATE	
AREAS	
CHECKED	
ORIGINAL SURVEY	
NOTE BOOK	
NO.	

MODEL: Definit  
 FILE NAME: H8111\_jackson\_Co\_Master\_Task\_Order611\_01\_North\_Marion\_St\_011CAD\_Sheets8111-19+37.00-19+50.00.dgn



USER NAME = mobrien  
 PLOT SCALE = 10.0000 ' / in.  
 PLOT DATE = 8/29/2023

DESIGNED -  
 DRAWN -  
 CHECKED -  
 DATE -

REVISED -  
 REVISED -  
 REVISED -  
 REVISED -

**JACKSON COUNTY  
 HIGHWAY DEPARTMENT**

**CROSS SECTIONS  
 NORTH MARION STREET**

SCALE: 1" = 5' SHEET 1 OF 3 SHEETS STA. 19+37.00 TO STA. 20+00.00

F.A. RTE.	SECTION	COUNTY	TOTAL SHEETS	SHEET NO.
	21-00186-00-R5	JACKSON	23	21
HMG JOB NO. 8111.100			CONTRACT NO. 99711	
ILLINOIS FED. AID PROJECT			U012(455)	



