

INDEX OF SHEETS

FOR INDEX OF SHEETS, SEE SHEET NO. 2

PROJECT LOCATED IN THE CITY OF CHICAGO

DAN RYAN EXPRESSWAY:	ADT (2010)	DESIGN SPEED	POSTED SPEED
NB I-94 (DAN RYAN)	151,800	60 MPH	55 MPH
NB 95TH STREET ENTRANCE RAMP	10,500	45 MPH	40 MPH
NB 87TH STREET EXIT RAMP	11,600	45 MPH	40 MPH
NB 87TH STREET ENTRANCE RAMP	14,300	45 MPH	40 MPH
NB 79TH STREET C-D ENTRANCE RAMP	9,000	45 MPH	40 MPH
NB 76TH STREET C-D EXIT RAMP	7,200	45 MPH	40 MPH
NB 75TH STREET C-D ENTRANCE RAMP	11,300	45 MPH	40 MPH
NB 71ST STREET C-D EXIT RAMP	6,600	45 MPH	40 MPH

PROJECT DESCRIPTION

PROJECT INCLUDES THE CONSTRUCTION OF CONCRETE SERVICE PADS AROUND 20 HIGH MAST LIGHT TOWERS LOCATIONS.

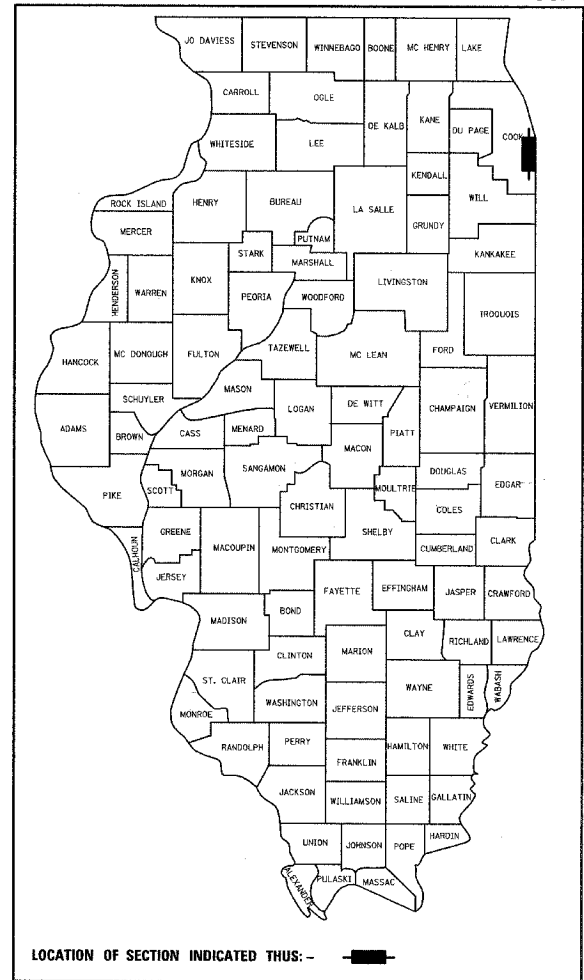
**STATE OF ILLINOIS
DEPARTMENT OF TRANSPORTATION
DIVISION OF HIGHWAYS**

PROPOSED HIGHWAY PLANS

**F.A.I. ROUTE 94 (DAN RYAN EXPRESSWAY)
SECTION 2005-037 L
I-57 INTERCHANGE TO 71ST STREET
HIGH MAST LIGHT TOWER SERVICE PADS**

**COOK COUNTY
C-91-267-05
R. 14 E.**

F.A.I. RTE.	SECTION	COUNTY	TOTAL SHEETS	SHEET NO.
94	2005-037 L	COOK	45	1
FED. ROAD DIST. NO.	ILLINOIS	FED. AID PROJECT		
D-91-267-05				# 60A08



LOCATION OF SECTION INDICATED THIS: -

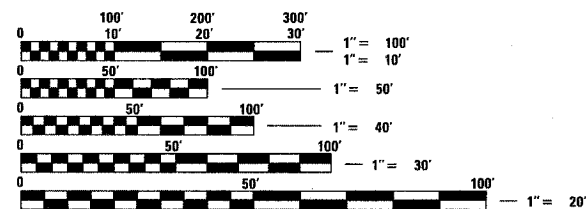
**STATE OF ILLINOIS
DEPARTMENT OF TRANSPORTATION
DIVISION OF HIGHWAYS**

SUBMITTED Aug. 19 20 05
Dean A. Klesling DISTRICT ENGINEER

October 14 20 05
Mike Dine ENGINEER OF DESIGN AND ENVIRONMENT

October 14 20 05
Eric E. Horn DEPUTY DIRECTOR, DIVISION OF HIGHWAYS

CONTRACT 40A



FULL SIZE PLANS HAVE BEEN PREPARED USING STANDARD ENGINEERING SCALES; REDUCED SIZED PLANS WILL NOT CONFORM TO STANDARD SCALES. IN MAKING MEASUREMENTS ON REDUCED PLANS, THE ABOVE SCALES MAY BE USED

DIGGER:
CHICAGO UTILITY ALERT NETWORK
(312) 744-7000

CTA CONTACT:
MARVIN A. WATSON,
GENERAL MANAGER, CONSTRUCTION
(312) 681-3860

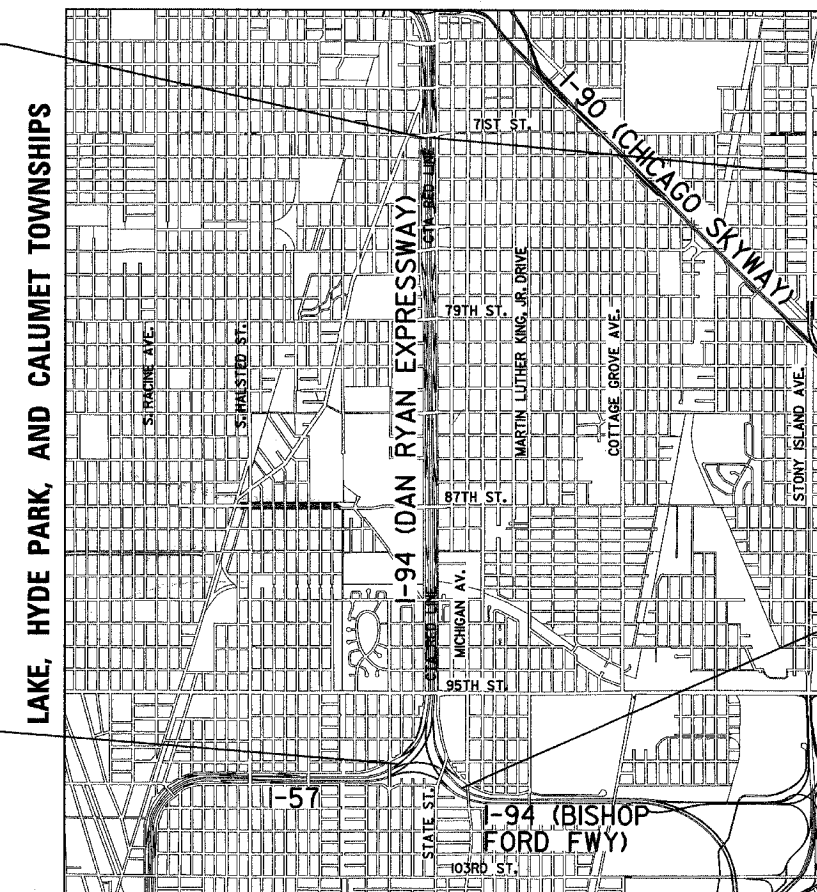
CONTRACT NO. 60A08

F.A.I. 94 (RYAN) PROJECT LIMIT
STA. 1364 + 69 (SB I-94)

F.A.I. 94 (RYAN) PROJECT LIMIT
STA. 2364 + 90 (NB I-94)

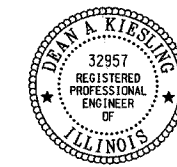
F.A.I. 94 (FORD) PROJECT LIMIT
STA. 2021 + 83 (NB I-94)

F.A.I. 57 PROJECT LIMIT
STA. 134 + 97 (SB I-57)



LOCATION MAP

0 1/2 MILE 1 MILE
GROSS LENGTH OF PROJECT = 20466.04 FT. = 3.876 MI.
MAP SCALE: 1" = 1/2 MILE
NET LENGTH OF PROJECT = 20466.04 FT. = 3.876 MI.



Signed Dean A. Klesling
Dean A. Klesling, P.E., Ill. Lic. No. 32957
Expires 11-30-2005.
Date 08-17-05

DISTRICT ONE DESIGN / PROJECT MANAGER:
BRIAN KUTTAB (847) 705 - 4431