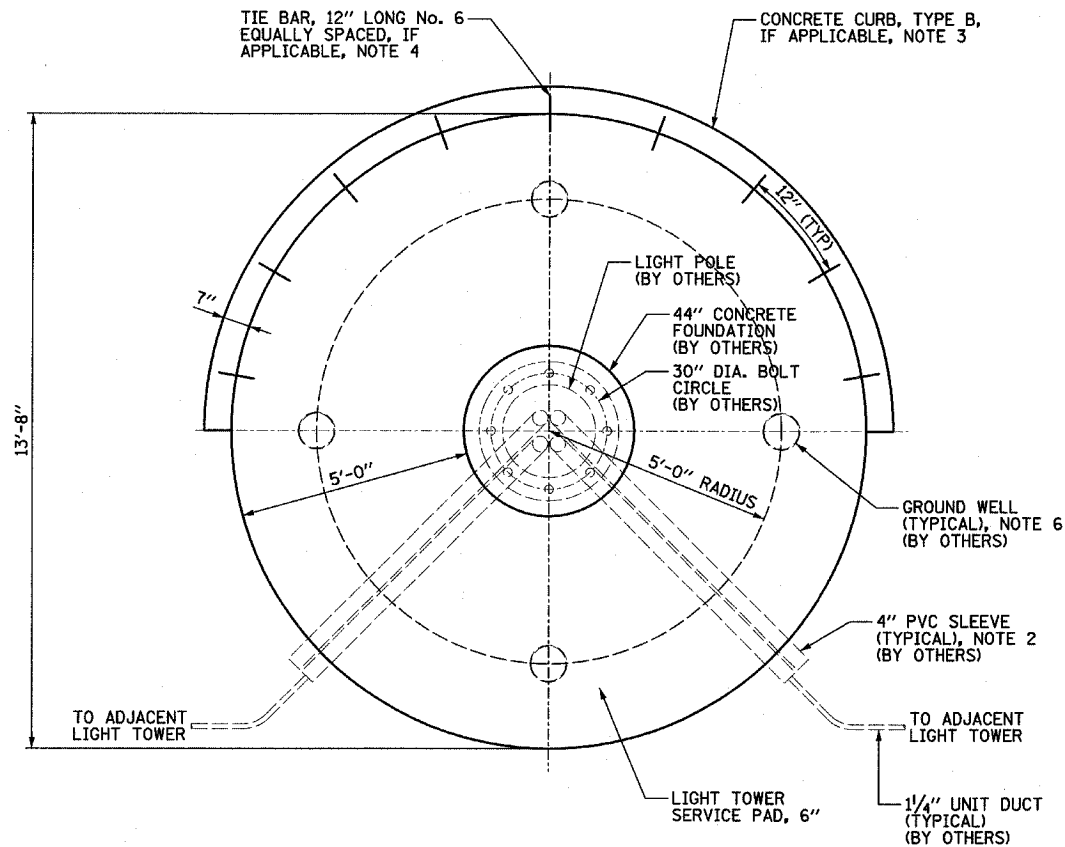
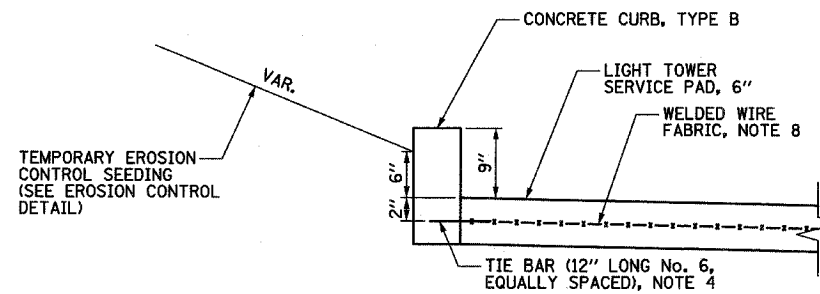


NOTES:

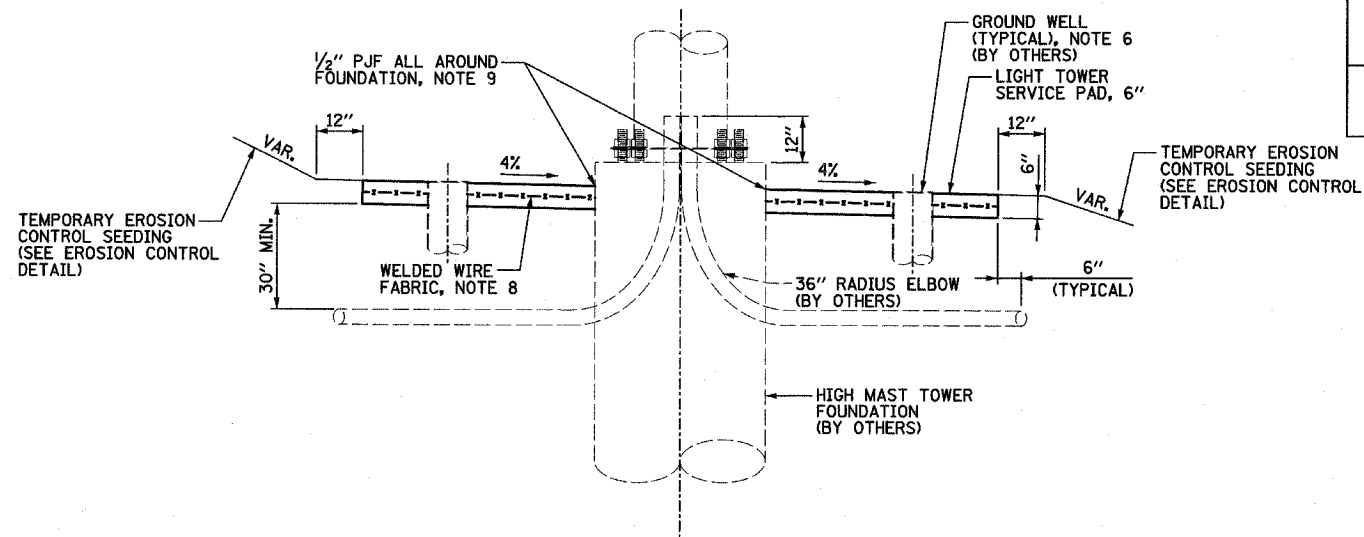
- SEE IDOT STANDARD DRAWING BE501 FOR ADDITIONAL HIGH MAST TOWER FOUNDATION DETAILS.
- 4" PVC SLEEVES PROVIDED BY THE FOUNDATION CONTRACTOR SHOULD EXTEND 6 INCHES BEYOND THE PROPOSED SERVICE PAD. IF THE CONTRACTOR DISCOVERS ANY SLEEVE TO BE UNACCEPTABLE IT SHALL BE BROUGHT TO THE ATTENTION OF THE ENGINEER.
- SEE CROSS SECTIONS FOR LOCATIONS WHERE CONCRETE CURB, TYPE B IS REQUIRED.
- TIE BARS WILL NOT BE PAID FOR SEPARATELY BUT WILL BE INCLUDED IN THE COST OF CONCRETE CURB, TYPE B.
- SEE IDOT STANDARD 606001 FOR DIMENSIONS OF CONCRETE CURB, TYPE B.
- GROUND WELLS 5'-0" AS MEASURED FROM THE CENTER LINE OF THE HIGH MAST TOWER TO THE CENTER LINE OF THE WELL TO BE INSTALLED BY OTHERS. ANY NECESSARY VERTICAL ADJUSTMENTS WILL BE PERFORMED BY THE CONTRACTOR WHO INSTALLED THE GROUND WELLS AT THE SPECIFIC LOCATION.
- CONTRACTOR FOR CONTRACT #60A08 SHALL COORDINATE WORK WITH CONTRACTS #62583, #62694, #62695, & OTHERS.
- WELDED WIRE FABRIC WILL NOT BE PAID FOR SEPARATELY BUT WILL BE INCLUDED IN THE COST OF LIGHT TOWER SERVICE PAD, 6". FABRIC SHALL BE 6 X 6, W4.5 X W4.5 AND PLACED AT MID-DEPTH OF THE PAD.
- PREFORMED JOINT FILLER WILL NOT BE PAID FOR SEPARATELY BUT WILL BE INCLUDED IN THE COST OF LIGHT TOWER SERVICE PAD, 6".



PLAN



PARTIAL ELEVATION - SHOWN WITH CURB
NOTE 3



ELEVATION - SHOWN WITHOUT CURB

GROUND MOUNTED HIGH MAST TOWER SERVICE PAD DETAIL

TYLIN INTERNATIONAL

REVISIONS	
NAME	DATE

ILLINOIS DEPARTMENT OF TRANSPORTATION
F.A.I. 94 (DAN RYAN EXPRESSWAY)
I-57 to 71st STREET

HIGH MAST LIGHT TOWER SERVICE PAD
DETAIL WITH & WITHOUT CURB

SCALE: N.T.S. DRAWN BY: RTM
DATE: AUGUST 19, 2005 CHECKED BY: TGB