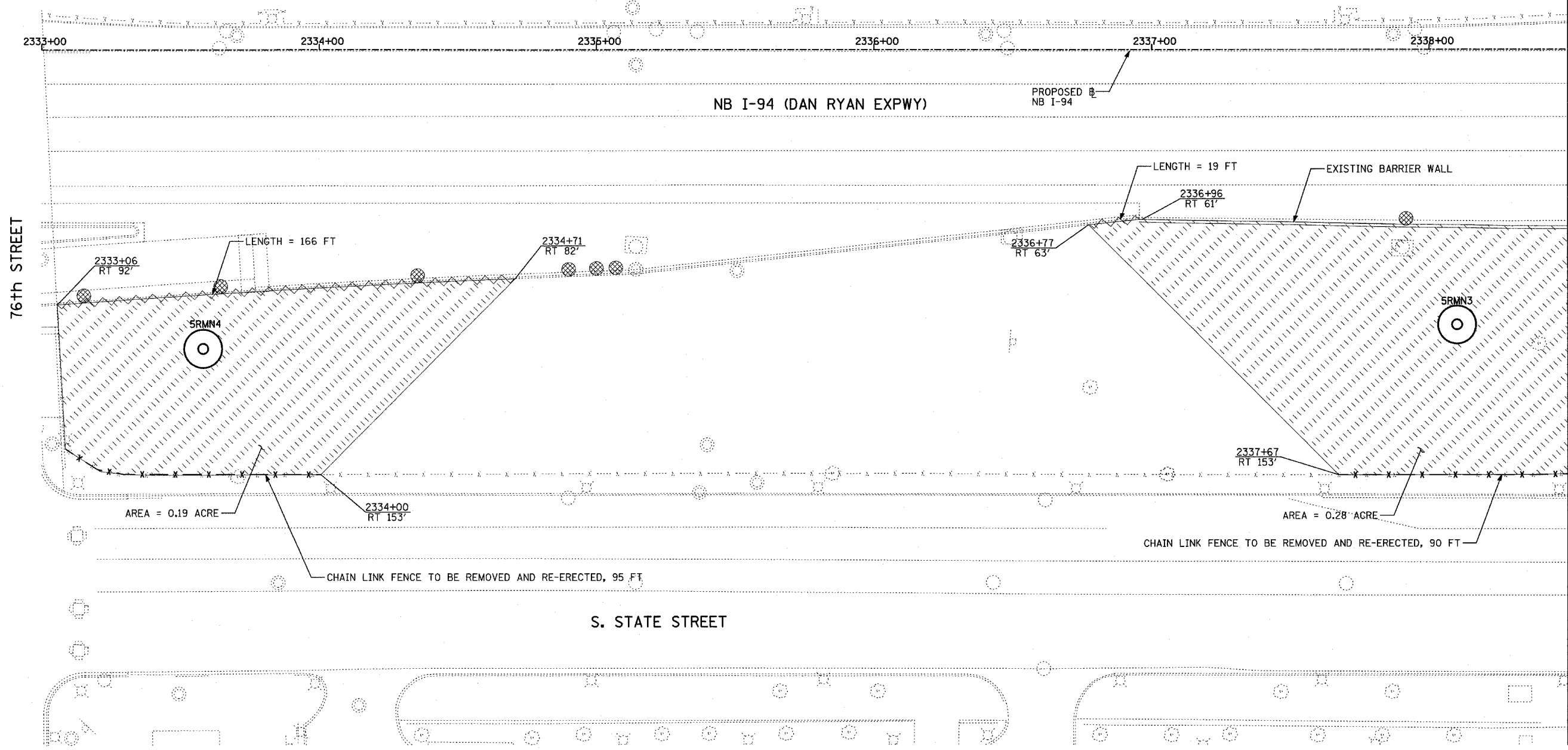
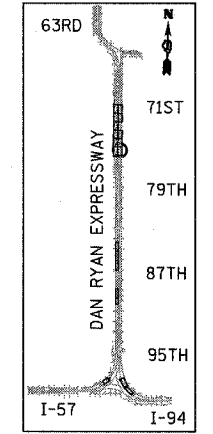


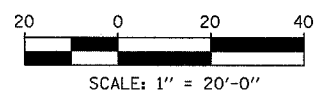
CTA RED LINE



MATCHLINE NB I-94 STA. 2338+50.00



LOCATION MAP



**NOTES:**

1. ALL HIGH MAST LIGHT TOWER SERVICE PADS MUST BE CONSTRUCTED AFTER THE ADJACENT RAMP IN CONTRACTS #62694 & #62695 IS OPENED.
2. FINAL TURF RESTORATION WILL BE PROVIDED BY CONTRACTS #62593 & #62304.
3. PLAN REFLECTS CONTRACTS #62694 & #62695 AS EXISTING CONDITIONS.

**LEGEND:**

- TEMPORARY EROSION CONTROL SEEDING (100 LBS PER ACRE)
- PERIMETER EROSION BARRIER
- INLET FILTER, TO BE INSTALLED IN OFF PROJECT DRAINAGE STRUCTURES ACCEPTING STORMWATER RUNOFF

REVISIONS	
NAME	DATE

ILLINOIS DEPARTMENT OF TRANSPORTATION  
 F.A.I. 94 (DAN RYAN EXPRESSWAY)  
 I-57 to 71st STREET  
 EROSION CONTROL PLAN  
 NB I-94 (DAN RYAN EXPRESSWAY)  
 NB I-94 STA. 2333+00.00 TO 2338+50.00  
 SRMN4, SRMN3  
 SCALE: 1"=20'  
 DATE: AUGUST 19, 2005  
 DRAWN BY: RTM  
 CHECKED BY: TGB

**TYLIN** INTERNATIONAL