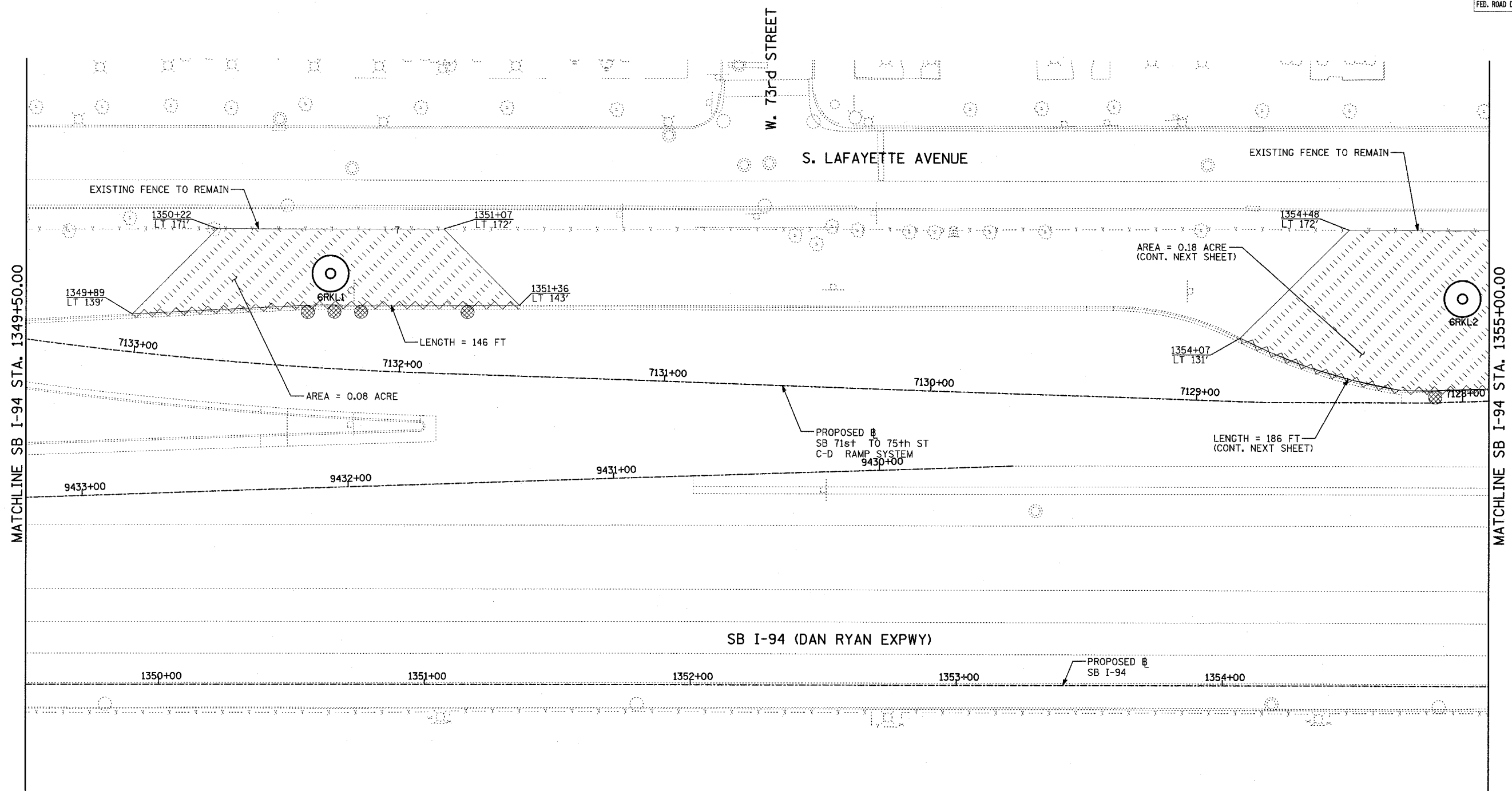
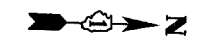


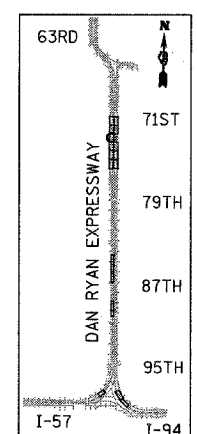
F.A.I. RTE.	SECTION	COUNTY	TOTAL SHEETS	SHEET NO.
94	2005-037 L	COOK	45	18
STA. 2021+00.00		TO STA. 2365+00.00		
FED. ROAD DIST. NO.	ILLINOIS	FED. AID PROJECT		

#60A08

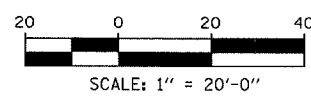


MATCHLINE SB I-94 STA. 1349+50.00

MATCHLINE SB I-94 STA. 1355+00.00



LOCATION MAP



NOTES:

1. ALL HIGH MAST LIGHT TOWER SERVICE PADS MUST BE CONSTRUCTED AFTER THE ADJACENT RAMP IN CONTRACTS #62694 & #62695 IS OPENED.
2. FINAL TURF RESTORATION WILL BE PROVIDED BY CONTRACTS #62593 & #62304.
3. PLAN REFLECTS CONTRACTS #62694 & #62695 AS EXISTING CONDITIONS.

LEGEND:

- TEMPORARY EROSION CONTROL SEEDING (100 LBS PER ACRE)
- PERIMETER EROSION BARRIER
- INLET FILTER, TO BE INSTALLED IN OFF PROJECT DRAINAGE STRUCTURES ACCEPTING STORMWATER RUNOFF

REVISIONS	
NAME	DATE

ILLINOIS DEPARTMENT OF TRANSPORTATION
 F.A.I. 94 (DAN RYAN EXPRESSWAY)
 I-57 to 71st STREET
 EROSION CONTROL PLAN
 SB 71st TO 75th ST RAMP
 SB I-94 STA. 1349+50.00 TO 1355+00.00
 6RKL1, 6RKL2

SCALE: 1"=20'
 DATE: AUGUST 19, 2005

DRAWN BY: RTM
 CHECKED BY: TGB

TYLIN INTERNATIONAL