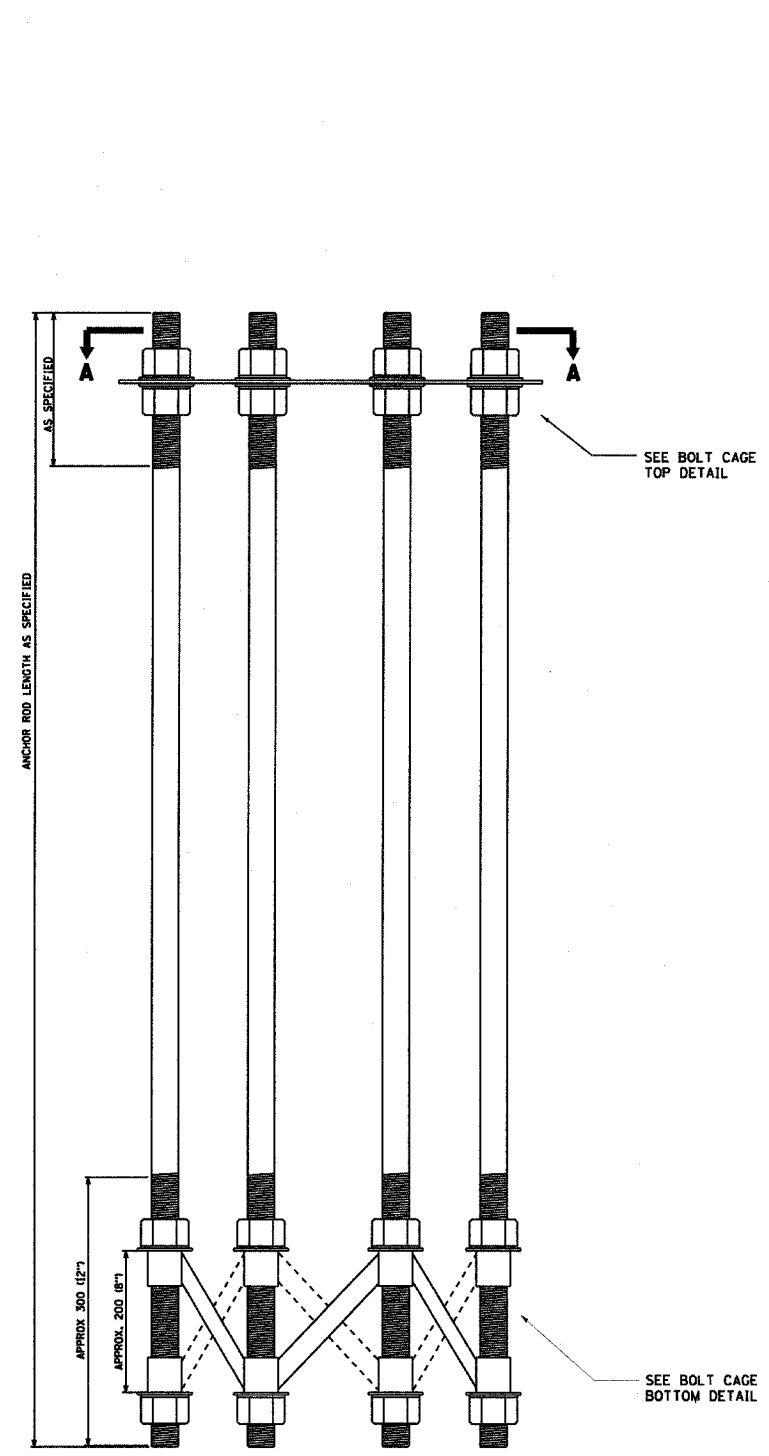


F. A. NO.	SECTION	COUNTY	TOTAL SHEETS	SHEET NO.
94	2005-0371	COOK	45	25
STA. 2021+00.00 TO STA. 2365+00.00				
FED. ROAD DIST. NO. 7	ILLINOIS	FED. AID PROJECT		

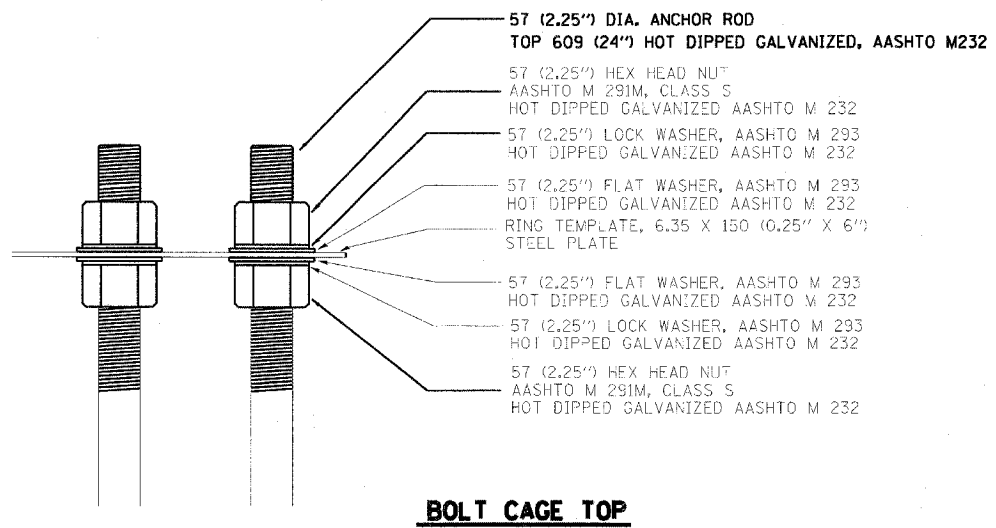
#60A08

**NOTES**

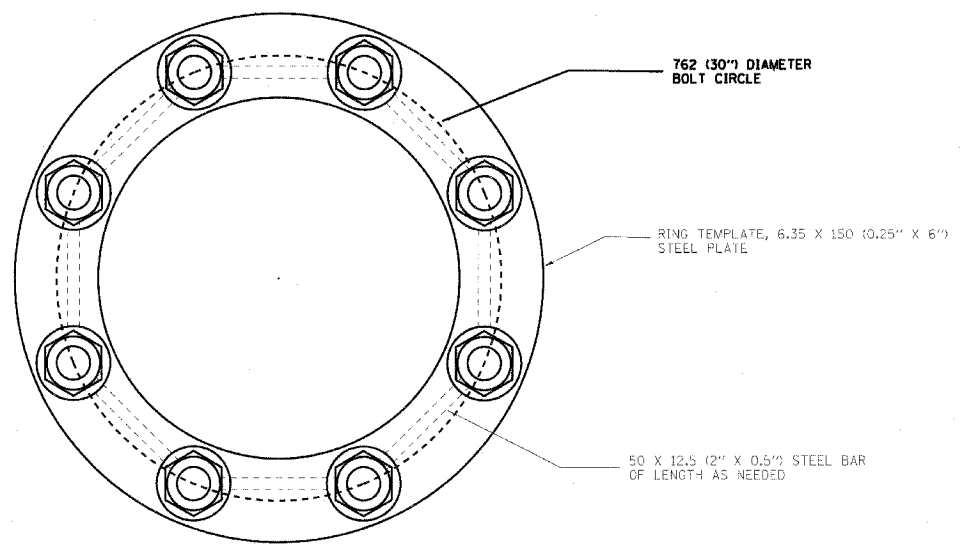
1. ALL DIMENSIONS IN MILLIMETERS (INCHES) UNLESS OTHERWISE SHOWN
2. ANCHOR RODS SHALL BE STRAIGHT AND SHALL BE ACCORDING TO AASHTO M 314 OR ASTM F1554, GRADE 725 (GRADE 105) AND GALVANIZED ACCORDING TO ARTICLE 1006.09.
3. ANCHOR ROD INFORMATION SHALL BE SUBMITTED FOR APPROVAL AND SHALL BE FULLY COORDINATED WITH TOWER MANUFACTURERS REQUIREMENTS.



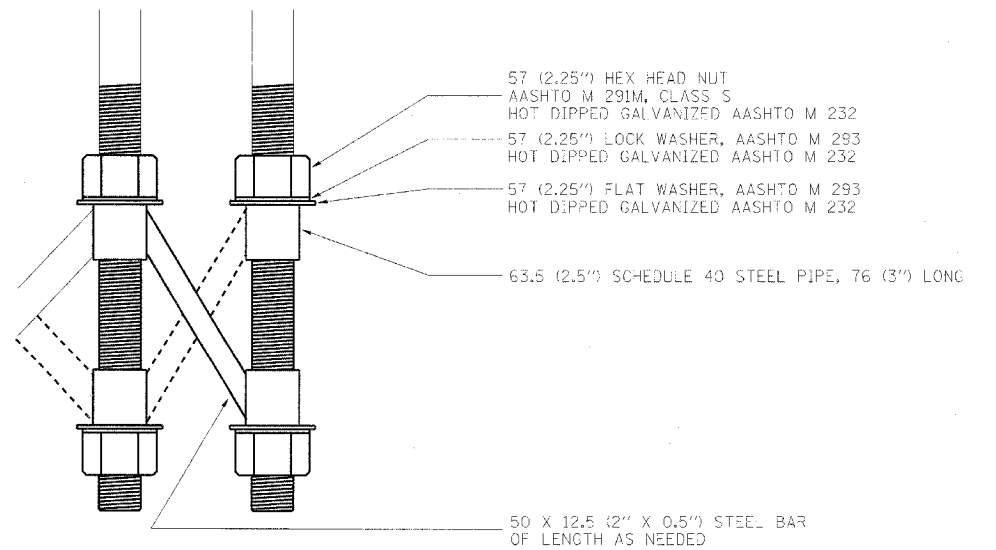
**ANCHOR BOLT CAGE**



**BOLT CAGE TOP**



**SECTION A-A**



**BOLT CAGE BOTTOM**

**FOR INFORMATION ONLY**

REVISIONS	
NAME	DATE

BE501

**ILLINOIS DEPARTMENT OF TRANSPORTATION**

**HIGH MAST LIGHT TOWER**  
27m TO 36m (90FT TO 120FT)  
**FOUNDATION DETAIL**

SHEET 2 OF 2

SCALE: NONE  
DATE 4/13/2005

DRAWN BY  
CHECKED BY  
BE08 (BE501)