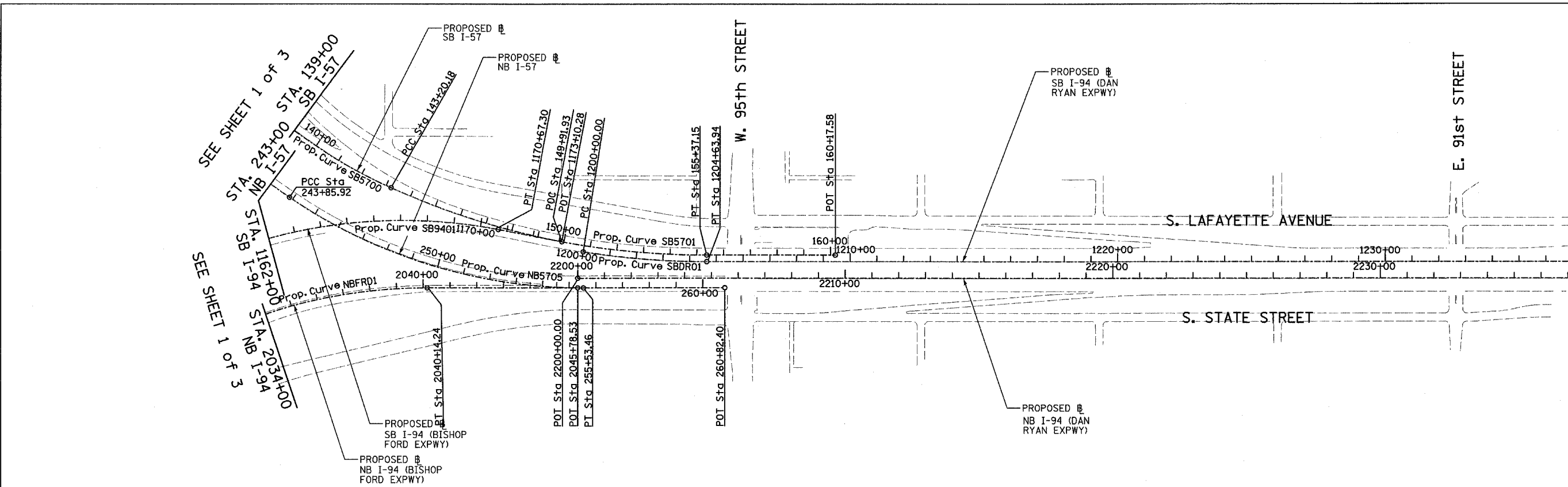


F.A.I. RTE.	SECTION	COUNTY	TOTAL SHEETS	SHEET NO.
94	2005-037 L	COOK	45	30
STA. 2021+00.00		TO STA. 2365+00.00		
FED. ROAD DIST. NO.		ILLINOIS	FED. AID PROJECT	

#60A08



Prop. Curve NBFDR1  
P.I. STA = 2029+29.73  
N = 1,838,902.75  
E = 1,177,946.02  
 $\Delta = 90^\circ 04' 24.06''$  (RT)  
D =  $3^\circ 00' 56.04''$   
R = 1,900.00  
L = 2,986.95  
E = 788.73  
T = 1,902.43  
P.C. STA = 2010+27.29  
N = 1,838,959.64  
E = 1,179,847.60  
P.T. STA = 2040+14.24  
N = 1,840,804.40  
E = 1,177,891.56

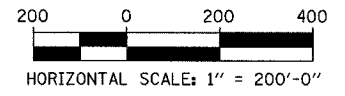
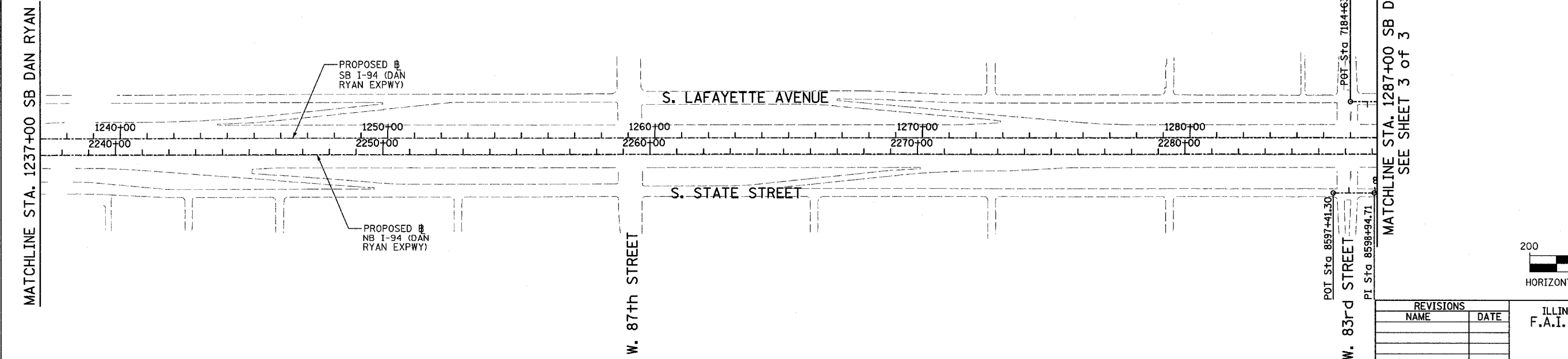
Prop. Curve SB9401  
P.I. STA = 1160+15.97  
N = 1,838,783.95  
E = 1,177,299.83  
 $\Delta = 100^\circ 48' 58.07''$  (RT)  
D =  $2^\circ 59' 59.20''$   
R = 1,910.00  
L = 3,360.79  
E = 1,086.95  
T = 2,309.46  
P.C. STA = 1137+06.52  
N = 1,838,851.99  
E = 1,179,608.28  
P.T. STA = 1170+67.30  
N = 1,841,064.16  
E = 1,177,666.20

Prop. Curve SB5700  
P.I. STA = 133+70.06  
N = 1,839,521.70  
E = 1,177,054.03  
 $\Delta = 66^\circ 11' 55.15''$  (LT)  
D =  $3^\circ 02' 10.83''$   
R = 1,887.00  
L = 2,180.21  
E = 365.53  
T = 1,230.09  
P.C. STA = 121+39.97  
N = 1,839,491.52  
E = 1,175,824.31  
P.T. STA = 143+20.18  
N = 1,840,659.02  
E = 1,177,522.68

Prop. Curve SB5701  
P.I. STA = 149+37.75  
N = 1,841,230.00  
E = 1,177,757.97  
 $\Delta = 24^\circ 02' 07.49''$  (LT)  
D =  $1^\circ 58' 30.13''$   
R = 2,901.00  
L = 1,216.96  
E = 65.01  
T = 617.56  
P.C. STA = 143+20.18  
N = 1,840,659.02  
E = 1,177,522.68  
P.T. STA = 155+37.15  
N = 1,841,847.31  
E = 1,177,740.29

Prop. Curve NB5705  
P.I. STA = 249+87.51  
N = 1,840,788.31  
E = 1,177,892.02  
 $\Delta = 34^\circ 03' 37.98''$  (LT)  
D =  $2^\circ 55' 02.28''$   
R = 1,964.00  
L = 1,167.54  
E = 90.07  
T = 601.59  
P.C. STA = 243+85.92  
N = 1,840,280.48  
E = 1,177,569.49  
P.T. STA = 255+53.46  
N = 1,841,389.65  
E = 1,177,874.80

Prop. Curve SBDR01  
P.I. STA = 1202+32.46  
N = 1,841,615.64  
E = 1,177,770.94  
 $\Delta = 9^\circ 05' 16.13''$  (LT)  
D =  $1^\circ 57' 31.79''$   
R = 2,925.00  
L = 463.94  
E = 9.22  
T = 232.46  
P.C. STA = 1200+00.00  
N = 1,841,385.14  
E = 1,177,740.80  
P.T. STA = 1204+63.94  
N = 1,841,848.00  
E = 1,177,764.28



REVISIONS	
NAME	DATE

ILLINOIS DEPARTMENT OF TRANSPORTATION  
F.A.I. 94 (DAN RYAN EXPRESSWAY)  
I-57 to 71st STREET

ALIGNMENT  
SHEET 2 OF 3

SCALE: 1"=200'  
DATE: AUGUST 19, 2005  
DRAWN BY: JPM  
CHECKED BY: DAK

TYLIN INTERNATIONAL