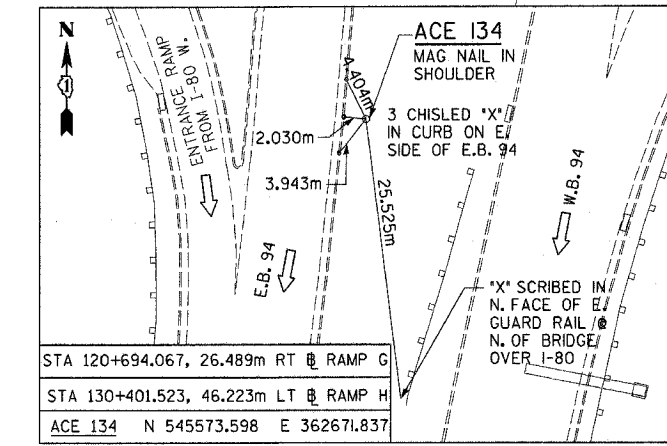
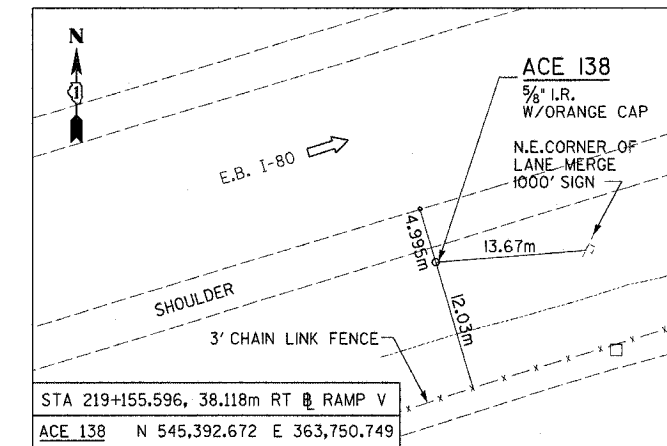
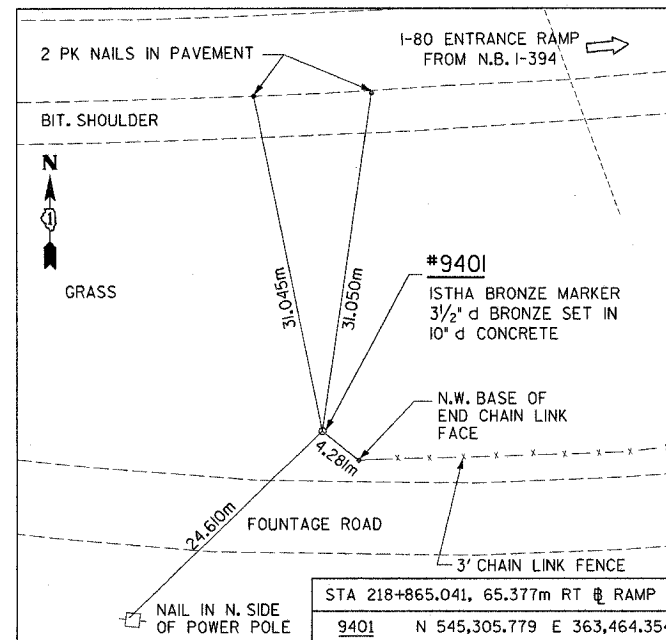
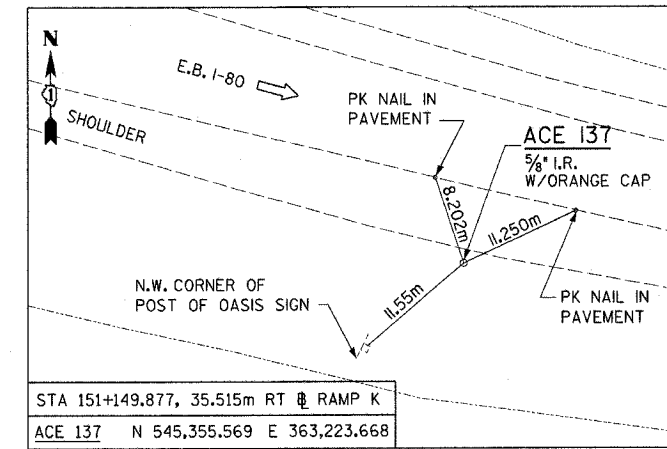
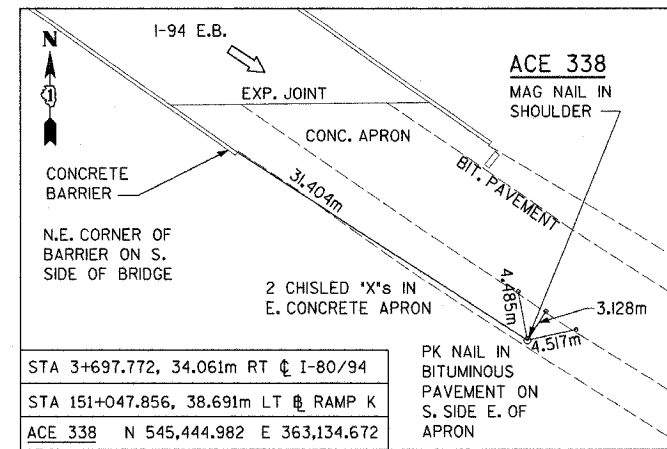
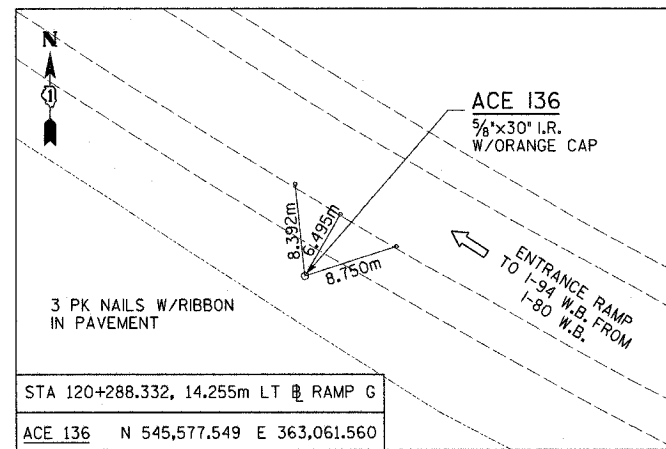
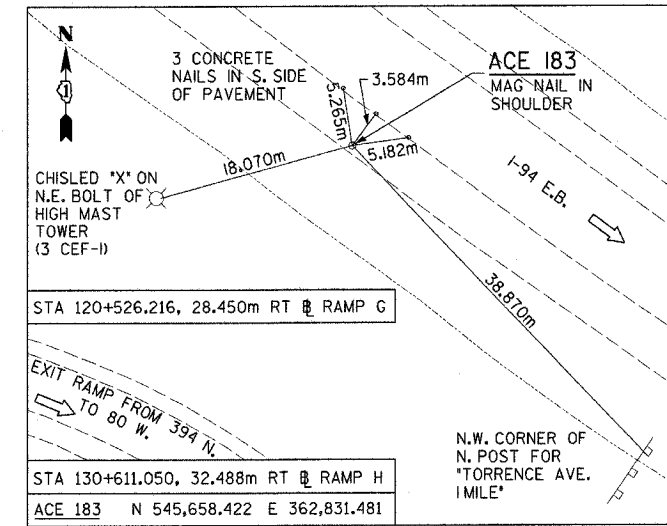
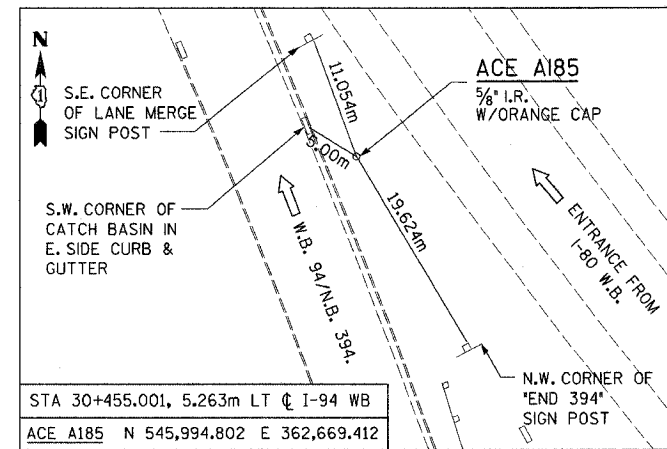
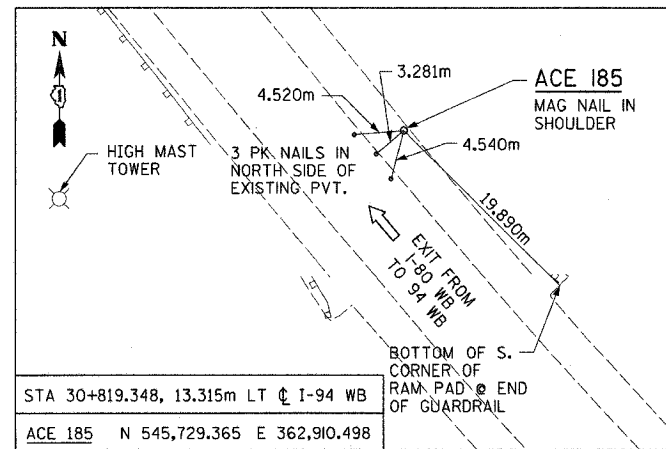


F.A.I. RTE.	SECTION	COUNTY	TOTAL SHEETS	SHEET NO.
80/94	*	COOK	231	28
STA.		TO STA.		
FED. ROAD DIST. NO. 1		ILLINOIS FED. AID PROJECT		
*(0203.1 & 0304) R-6		CONTRACT # 62105		



NOTES:

- FOR BENCHMARKS SEE DRAWING TB-7
- MONUMENTS, BENCHMARKS AND TIE POINTS MAY HAVE BEEN REMOVED AND RELOCATED UNDER PREVIOUS CONTRACTS. COORDINATE MONUMENTS AND TIE POINTS WITH RESIDENT ENGINEER.

REVISIONS	
NAME	DATE

ILLINOIS DEPARTMENT OF TRANSPORTATION
F.A.I. ROUTE 80/94 (INTERSTATE 80/294)

ALIGNMENT, TIES,
AND BENCHMARKS

SCALE: NONE
DATE: JULY 18, 2005
DRAWN BY: CTT
CHECKED BY: RCH

McDonough Associates Inc.
Engineers / Architects

TB-6