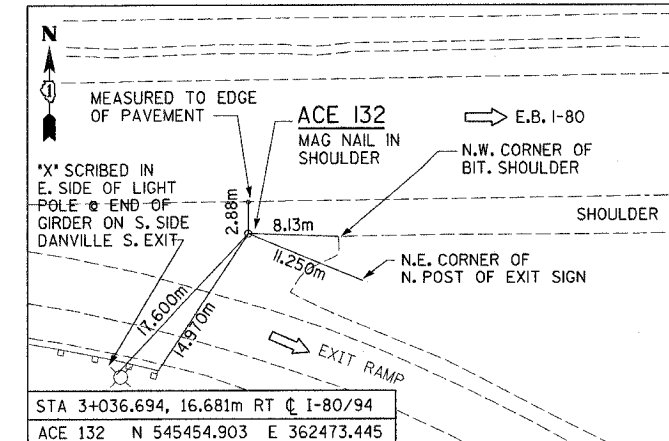
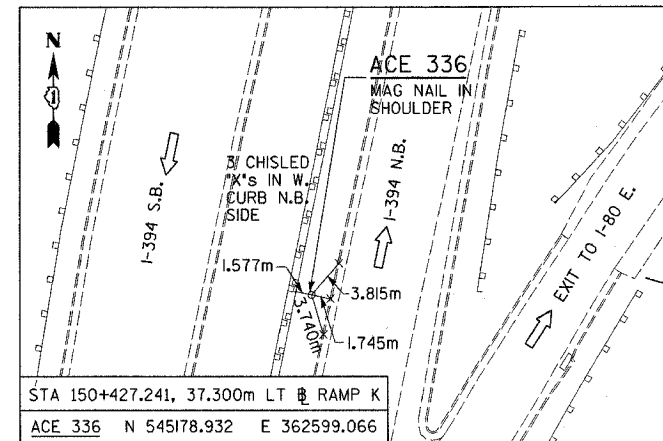
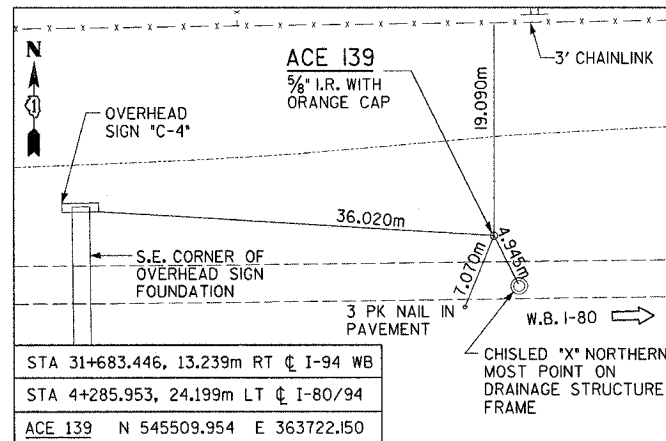
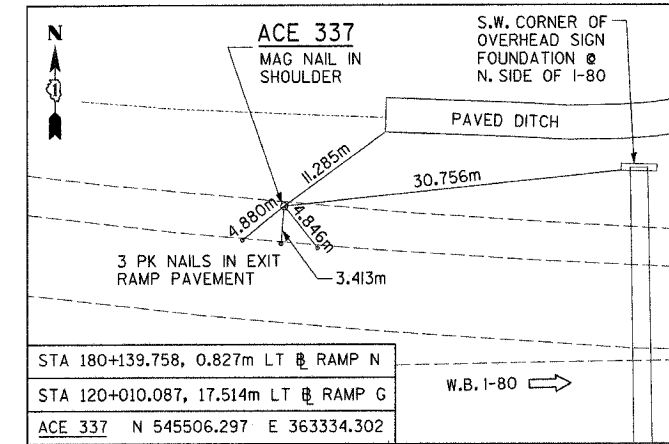
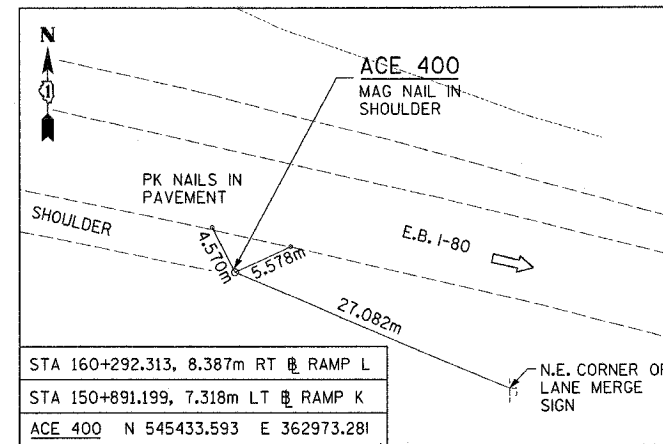
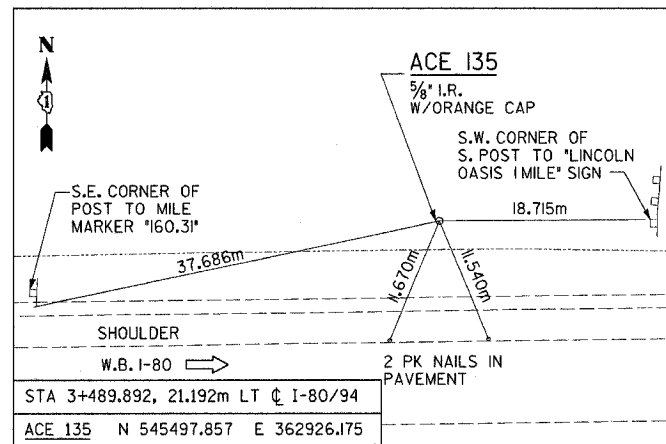


F.A.I. RTE.	SECTION	COUNTY	TOTAL SHEETS	SHEET NO.
80/94	*	COOK	231	29
STA.	TO STA.			
FED. ROAD DIST. NO. 1	ILLINOIS	FED. AID PROJECT		
* (0203.1 & 0304) R-6			CONTRACT # 62105	



BENCHMARKS

- | | | | |
|-------------|---|------------|--|
| B.M. ASC220 | SQUARE CUT ON SOUTHEAST CORNER OF ILL 394 NORTHBOUND LANE BRIDGE OVER I-80 (LOWER LEVEL).
ELEV=184.942 | T.B.M. 117 | SET CUT BOX ON CRASHWALL NE CORNER OF BRIDGE TO IL 394 SOUTH, WESTBOUND I-80, APPROXIMATELY MILE MARKER 160.61.
ELEV=185.164 |
| T.B.M. 200 | CHISELED "X" ON NORTHEAST BOLT OF LIGHT POLE #DEF2 LOCATED AT SOUTHEAST QUADRANT OF IL 394 & I-80 RAMP INTERCHANGE.
ELEV=184.031 | T.B.M. 118 | SET CUT BOX ON CRASHWALL NE CORNER OF NE WINGWALL, WESTBOUND I-80 AT MILE MARKER 0, RAILROAD BRIDGE.
ELEV=190.545 |
| T.B.M. 216 | CHISELED BOX ON NORTHEAST CORNER OF METAL BASE OF #DEF5 LIGHT POLE LOCATED AT SOUTHWEST QUADRANT OF IL 394 AND I-80.
ELEV=185.034 | T.B.M. 300 | SET CUT BOX AT SE END OF CRASHWALL AT THORN CREEK BRIDGE TO WESTBOUND I-94 FROM WESTBOUND I-80.
ELEV=183.791 |
| T.B.M. 217 | FOUND 'CUT' BOX ON NORTHEAST CORNER OF CEMENT BOX TRUST FOUNDATION #B1 +/-250m WEST OF IL 394 ON I-80.
ELEV=190.636 | T.B.M. 301 | RAILROAD SPIKE IN SW SIDE OF 0.55m TREE (+/- 380m) NORTH OF T.B.M. 300 LOCATED +/- 6m EAST OF SHOULDER WHERE IL 394 NORTHBOUND RAMP MERGES WITH I-94 WESTBOUND.
ELEV=184.726 |
| T.B.M. 218 | CHISELED BOX ON NORTHWEST CORNER OF CRASHWALL OF EASTBOUND I-80 OVER RAILROAD BRIDGE JUST WEST OF IL 394 ON SOUTH SIDE OF I-80.
ELEV=196.229 | T.B.M. 316 | SET CUT BOX ON FOUNDATION OF OVERHEAD SIGN TRUSS (C3) NE CORNER OF EXIT RAMP TO I-80 WESTBOUND; APPROXIMATELY MILE MARKER 74.30.
ELEV=183.274 |
| T.B.M. 221 | CHISELED BOX ON SOUTHWEST CORNER OF CONCRETE FOUNDATION OF BOX SIGN TRUST ON NORTHBOUND IL 394 APPROXIMATELY 300m SOUTH OF I-80 ON WEST FOUNDATION OF SIGN #D4.
ELEV=185.164 | T.B.M. 617 | A STANDARD DISK STAMPED K25E SET ON TOP OF THE SOUTH END OF THE WEST PIER OF THE CALUMET EXPRESSWAY WESTBOUND GRADE SEPARATION OVERPASS TRI-STATE EXPRESSWAY SEC. 25-36-14
ELEV=188.016 |

NOTES:

- MONUMENTS, BENCHMARKS AND TIE POINTS MAY HAVE BEEN REMOVED AND RELOCATED UNDER PREVIOUS CONTRACTS. COORDINATE MONUMENTS AND TIE POINTS WITH RESIDENT ENGINEER.

TB-7

REVISIONS		ILLINOIS DEPARTMENT OF TRANSPORTATION F.A.I. ROUTE 80/94 (INTERSTATE 80/294)
NAME	DATE	
		ALIGNMENT, TIES, AND BENCHMARKS
		SCALE: NONE
		DATE: JULY 18, 2005
		DRAWN BY: CTT
		CHECKED BY: RCH
		McDonough Associates Inc. Engineers / Architects