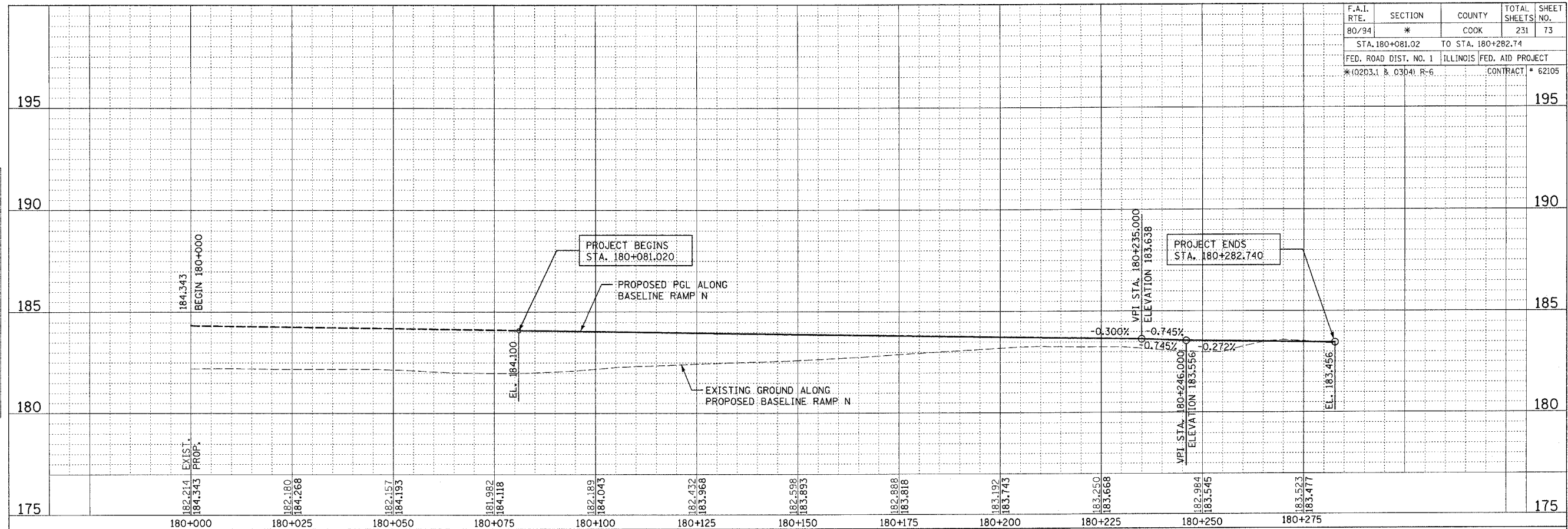


F.A.I. RTE.	SECTION	COUNTY	TOTAL SHEETS	SHEET NO.
80/94	*	COOK	231	73
STA. 180+081.02		TO STA. 180+282.74		
FED. ROAD DIST. NO. 1		ILLINOIS FED. AID PROJECT		
*10203.1 & 03041 R-6		CONTRACT # 62105		

BY	DATE
FINAL SURVEY PLOTTED	
NOTE BOOK NO.	
AREAS CHECKED	



BY	DATE
ORIGINAL SURVEY PLOTTED	
NOTE BOOK NO.	
AREAS CHECKED	

REVISIONS		ILLINOIS DEPARTMENT OF TRANSPORTATION F.A.I. ROUTE 80/94 (INTERSTATE 80/294)
NAME	DATE	
		RAMP N ROAD PROFILE STA. 180+081.02 TO STA. 180+282.74
		HORIZ SCALE: 1 : 500
		VERT SCALE: 1 : 100
		DATE: JULY 18, 2005
		DRAWN BY: CTT
		CHECKED BY: RCH
		McDonough Associates Inc. Engineers / Architects