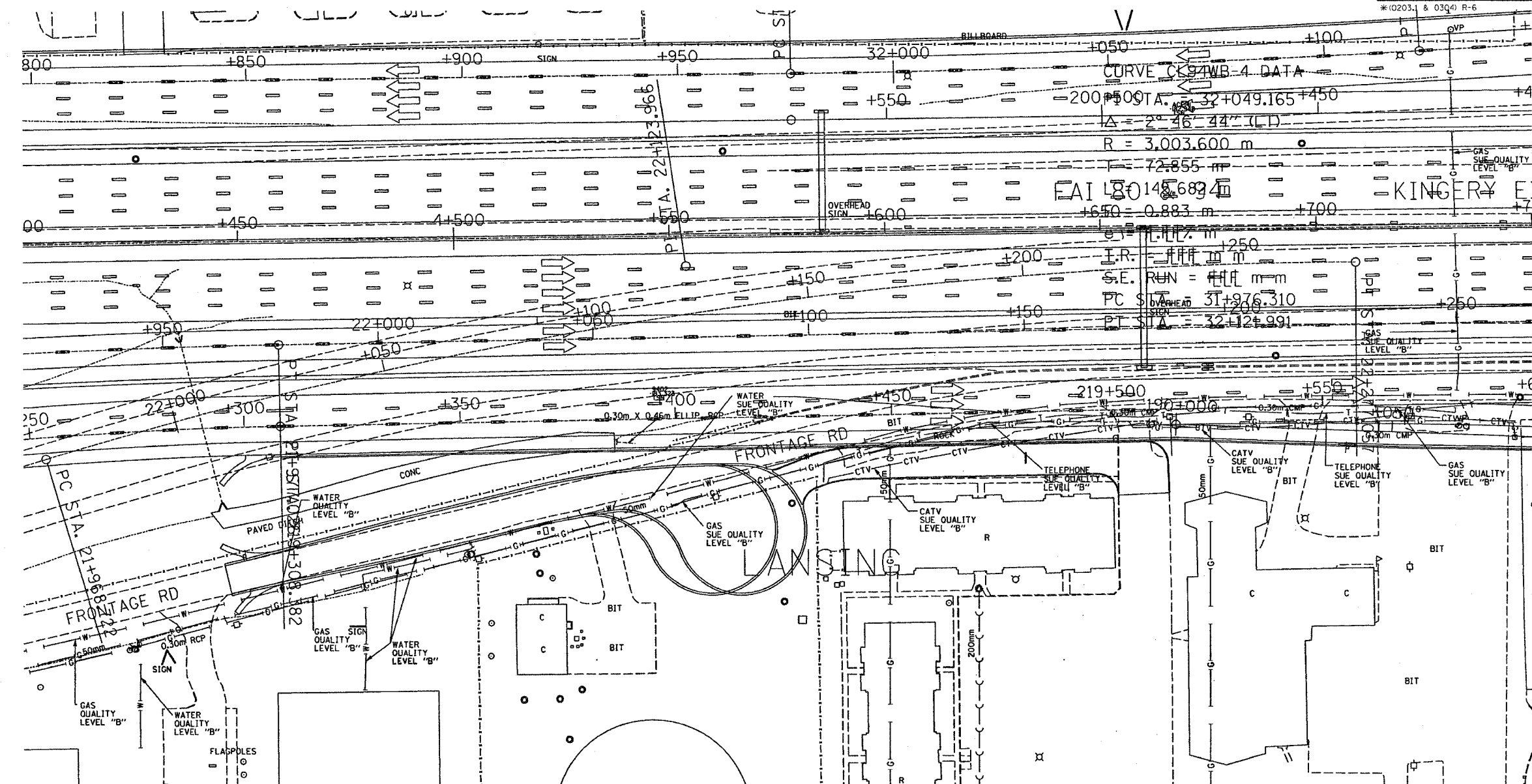


F.A. RTE.	SECTION	COUNTY	TOTAL SHEETS	SHEET NO.
80/94	SEE BELOW	COOK	231	100
STA.	TO STA.			
FED. ROAD DIST. NO.	ILLINOIS	FED. AID PROJECT		
* (0203) & 03Q4 R-6 CONTRACT * 62105				



— T — T —	TELEPHONE
— W — W —	WATER
— G — G —	GAS
— CTV — CTV —	CABLE TELEVISION
— FO — FO —	FIBER OPTIC
— E — E —	ELECTRIC

TBE GROUP, INC.
 CIVIL ENGINEERING • TRANSPORTATION • ENVIRONMENTAL
 PLANNING • UTILITY ENGINEERING/LOCATING
 SOUTHERN REGION: FL, GA, SC, NC
 NORTHERN REGION: IL, IN, MI, OH, MD, NJ, NY
 PA, VA, CANADA
 WESTERN REGION: AZ, NV, NM, TX, CA, OR, UT, WA

IL09500122
 TBE SUE PAGE NO: 27 of 52
 Signature *Robert J. Demers Jr.*
 SUE Quality Level "A" : Test Holes
 SUE Quality Level "B" : Designating



205 W. WACKER DRIVE
 SUITE 1020
 CHICAGO, IL 60606
 (312) 704-1970

Utilities shown on these plans as depicted in the legend have been investigated by TBE Group, Inc in accordance with SUE Industry Standards as of 2/8/02. All other information shown has been provided to TBE Group, Inc by others.

SU-11

REVISIONS		ILLINOIS DEPARTMENT OF TRANSPORTATION
NAME	DATE	
		E. of IL RT. 83/US RT. 6 to E. Burnham Ave. I-80/I-94 Burnham Ave. to State Line I-80/I-94 (Tollway) E. of I-94 to W. of RT. 83/US 6. I-94/IL RT. 394 S. of US 6 to 186th Street (Inbound & S-bound) Contract No. 62110, 62111, 62114, 62105, 62107, 62108 SCALE: 500 DRAWN BY: JAC SOL "B" DATE: 2/8/02 CHECKED BY:

Contract: 62110/62111/62114/62105/62107/62108 7/15/2005 10:34:21 AM