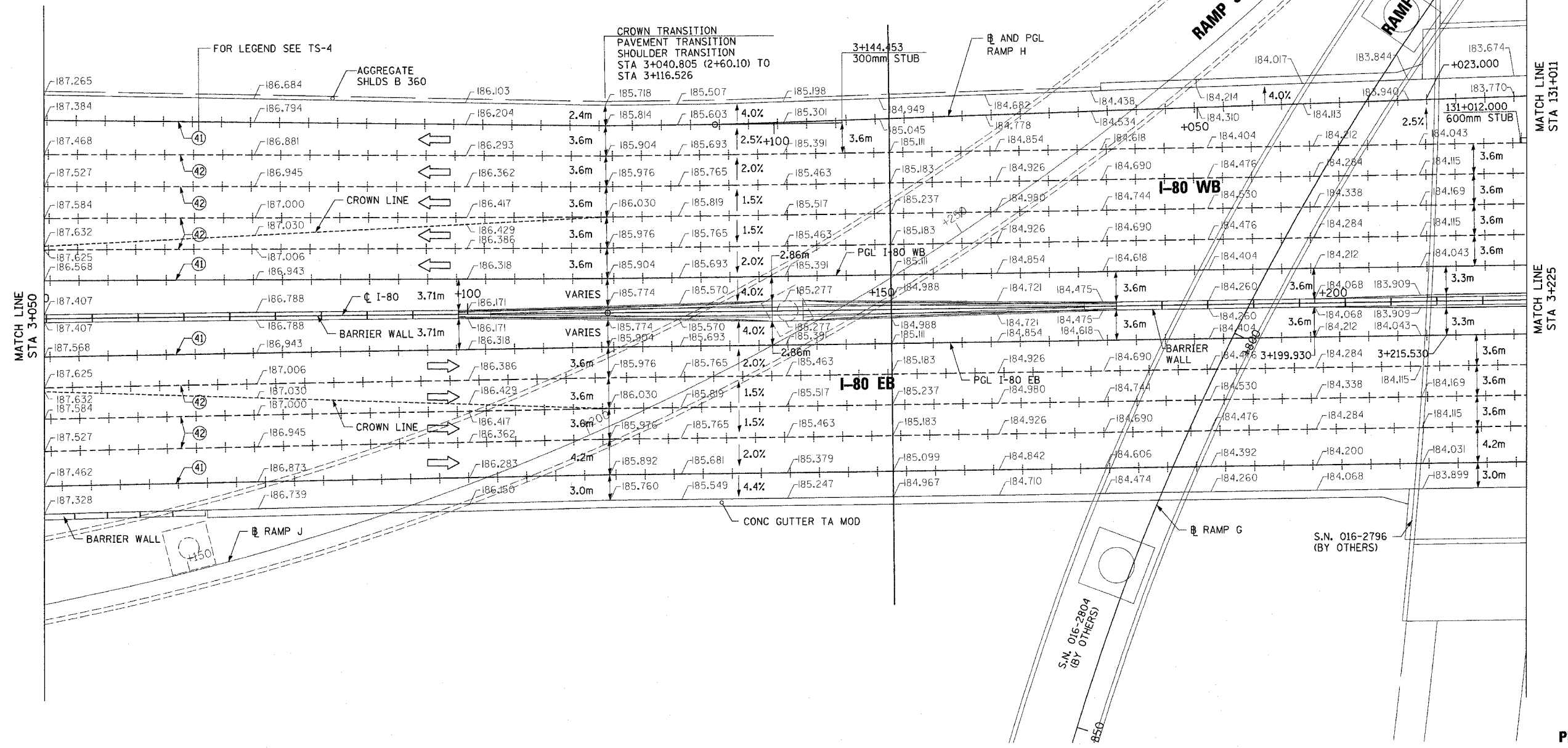
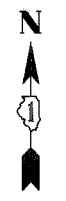


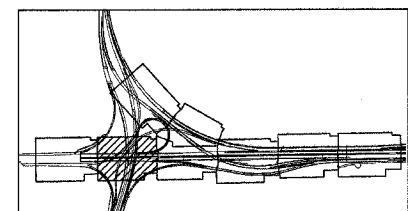
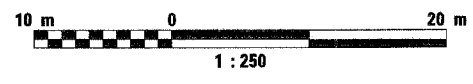
| | | | | |
|-----------------------|---------|------------------|------------------|-----------|
| F.A.I. RTE. | SECTION | COUNTY | TOTAL SHEETS | SHEET NO. |
| 80/94 | * | COOK | 231 | 113 |
| STA. 3+050.00 | | TO STA. 3+225.00 | | |
| FED. ROAD DIST. NO. 1 | | ILLINOIS | FED. AID PROJECT | |
| *(0203.1 & 0304) R-6 | | CONTRACT # 62105 | | |



MATCH LINE
STA 3+050

MATCH LINE
STA 131+011

MATCH LINE
STA 3+225



| REVISIONS | |
|-----------|------|
| NAME | DATE |
| | |
| | |
| | |
| | |

ILLINOIS DEPARTMENT OF TRANSPORTATION
F.A.I. ROUTE 80/94 (INTERSTATE 80/294)

PAVEMENT ELEVATIONS AND DETAILS

SCALE: 1:250
DATE: JULY 18, 2005

DRAWN BY: CTT
CHECKED BY: RCH

McDonough Associates Inc.
Engineers / Architects

PD-2