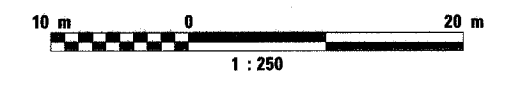
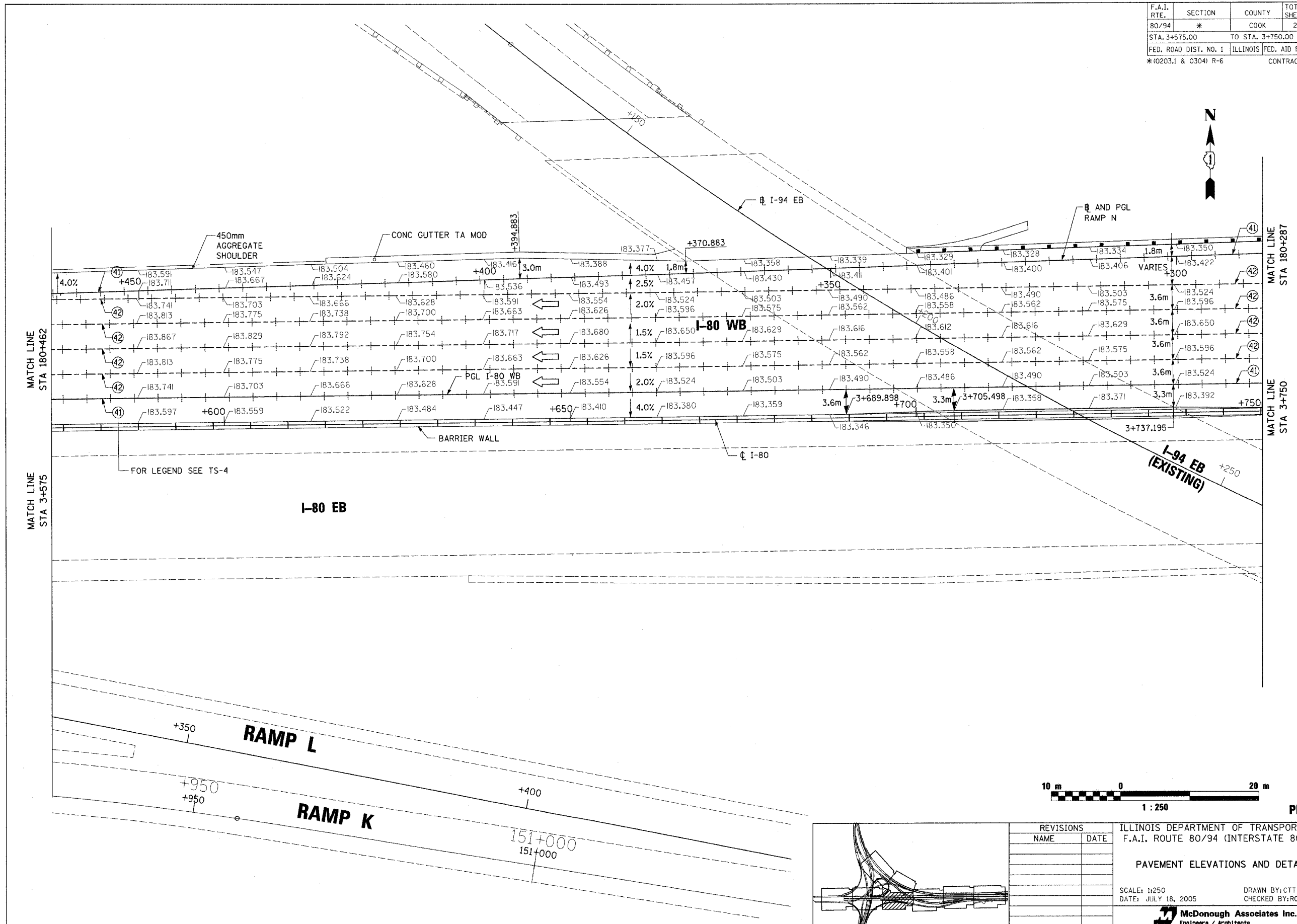
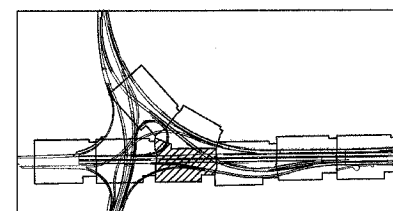


F.A.I. RTE.	SECTION	COUNTY	TOTAL SHEETS	SHEET NO.
80/94	*	COOK	231	116
STA. 3+575.00		TO STA. 3+750.00		
FED. ROAD DIST. NO. 1		ILLINOIS	FED. AID PROJECT	
*(0203.1 & 0304) R-6		CONTRACT * 62105		



1 : 250

PD-5



REVISIONS	
NAME	DATE

ILLINOIS DEPARTMENT OF TRANSPORTATION  
 F.A.I. ROUTE 80/94 (INTERSTATE 80/294)

PAVEMENT ELEVATIONS AND DETAILS

SCALE: 1:250  
 DATE: JULY 18, 2005

DRAWN BY: CTT  
 CHECKED BY: RCH

**McDonough Associates Inc.**  
 Engineers / Architects