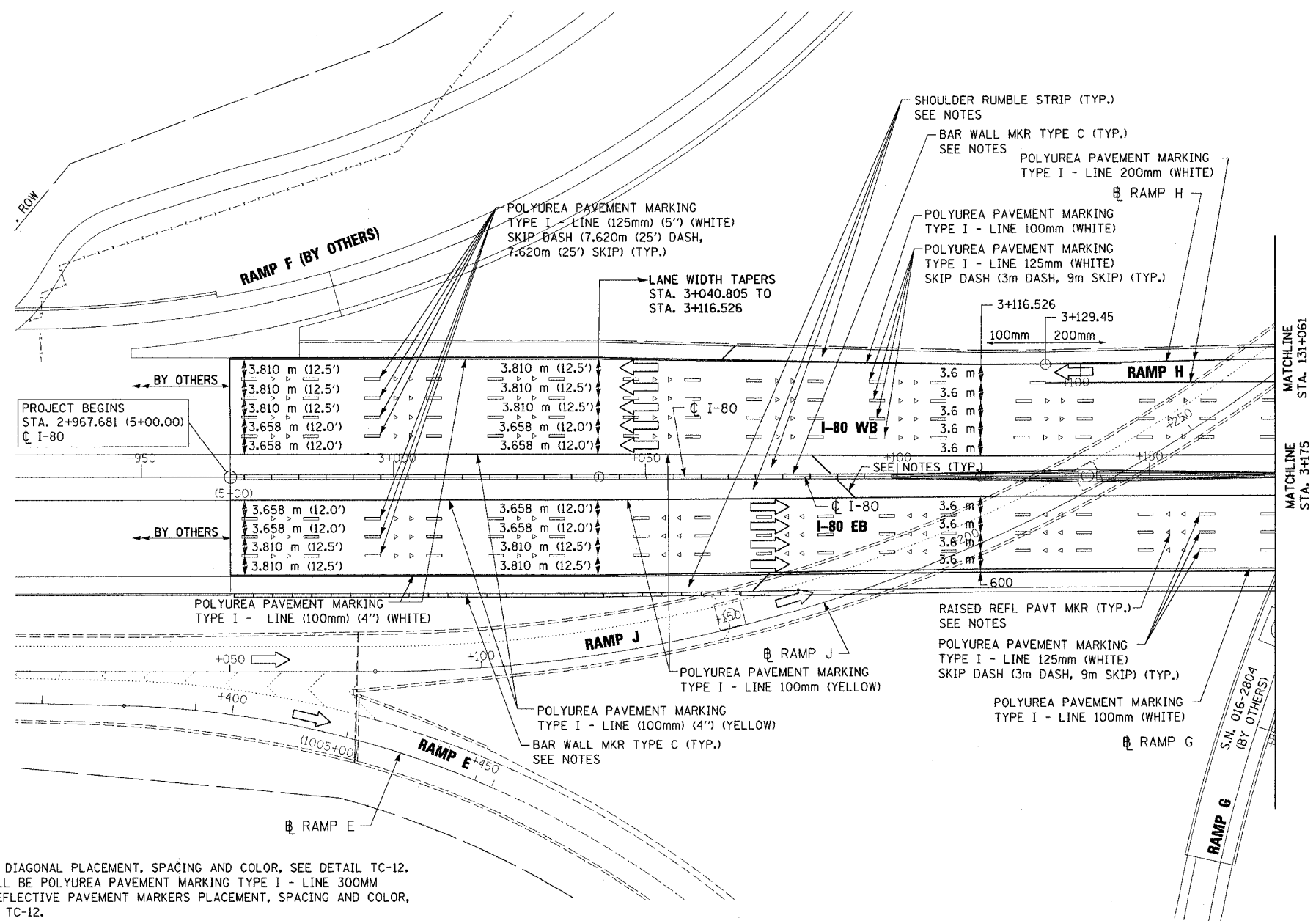
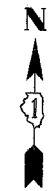
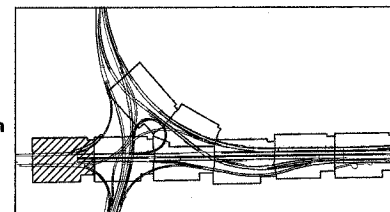


F.A.I. RTE.	SECTION	COUNTY	TOTAL SHEETS	SHEET NO.
80/94	*	COOK	231	122
STA. 2+967.681		TO STA. 3+175.00		
FED. ROAD DIST. NO. 1		ILLINOIS	FED. AID PROJECT	
*(0203.1 & 0304) R-6		CONTRACT # 62105		



- NOTES:
1. FOR SHOULDER DIAGONAL PLACEMENT, SPACING AND COLOR, SEE DETAIL TC-12. MATERIAL SHALL BE POLYUREA PAVEMENT MARKING TYPE I - LINE 300MM
 2. FOR RAISED REFLECTIVE PAVEMENT MARKERS PLACEMENT, SPACING AND COLOR, SEE STANDARD TC-12.
 3. FOR BARRIER WALL MARKERS, TYPE C PLACEMENT, SPACING AND COLOR, SEE STANDARD 635001 AND 635006.
 4. FOR SHOULDER RUMBLE STRIP PLACEMENT AND SPACING, SEE STANDARD 642001.
 5. FOR PAVEMENT MARKINGS AND SHOULDER RUMBLE STRIPS TO BE PLACED ON 4.2m PAVEMENT SEE "DETAILS FOR PLACEMENT OF PAVEMENT MARKING AND SHOULDER RUMBLE STRIPS ON 4.2m PAVEMENT" SHEET MD-10.



REVISIONS	
NAME	DATE

PM-1

ILLINOIS DEPARTMENT OF TRANSPORTATION
F.A.I. ROUTE 80/94 (INTERSTATE 80/294)

FINAL PAVEMENT MARKINGS

DATE: JULY 18, 2005

DRAWN BY: CTT
CHECKED BY: RCH

McDonough Associates Inc.
Engineers / Architects

McDonough Associates Inc. 21401/2005 R-60 2/05