

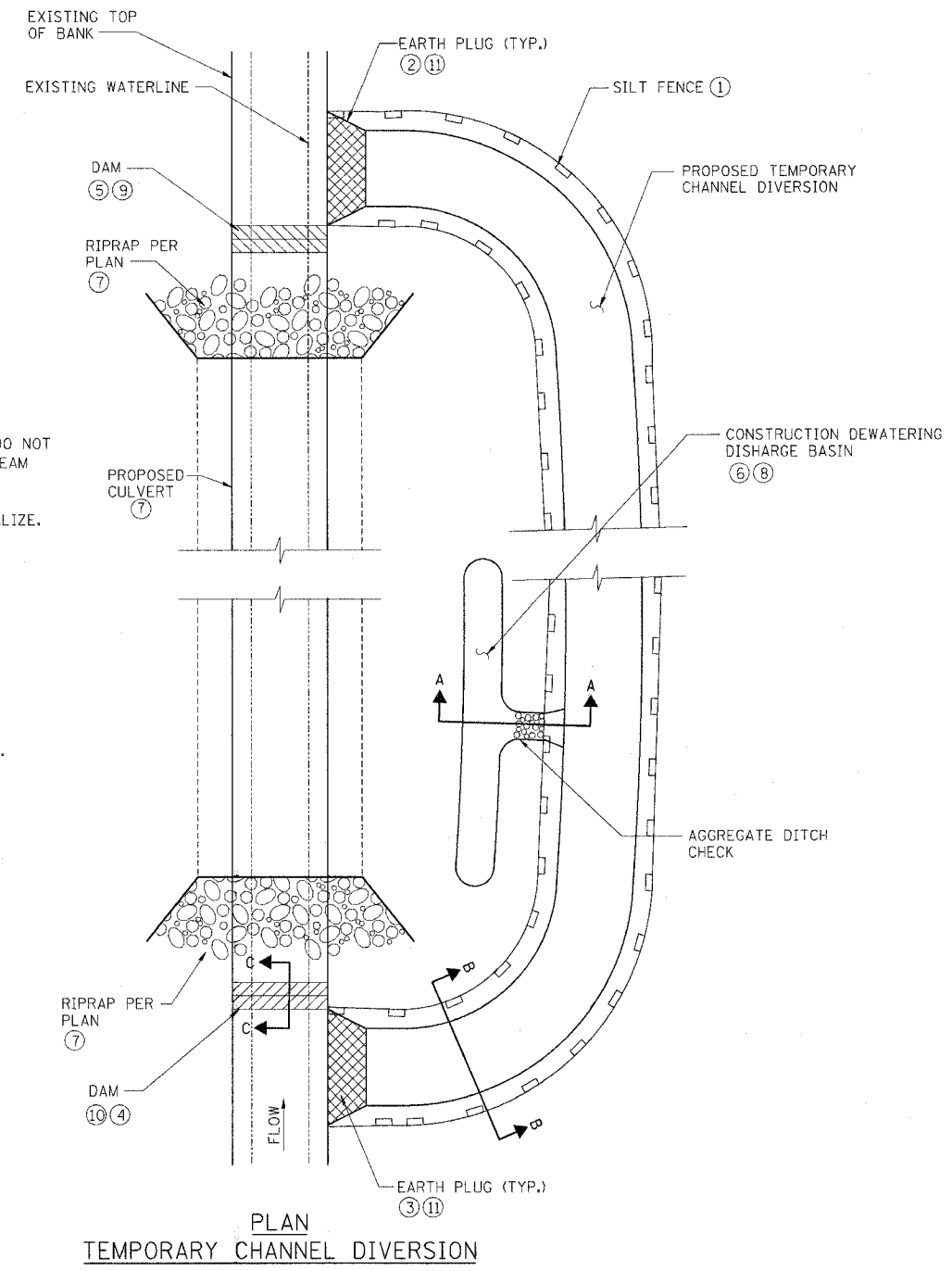
F.A.I. RTE.	SECTION	COUNTY	TOTAL SHEETS	SHEET NO.
80/94	*	COOK	231	145
STA.	TO STA.			
FED. ROAD DIST. NO. 1	ILLINOIS	FED. AID PROJECT		
*10203.1 & 03041 R-6			CONTRACT # 62105	

GENERAL NOTES

1. THE CONTRACTOR SHALL FOLLOW THE CONSTRUCTION SEQUENCE DESCRIBED BELOW.
2. THE NEW CULVERT AND ANY REQUIRED RIPRAP SHALL BE COMPLETED PRIOR TO INITIATING OPENING OF THE CULVERT TO FLOW.

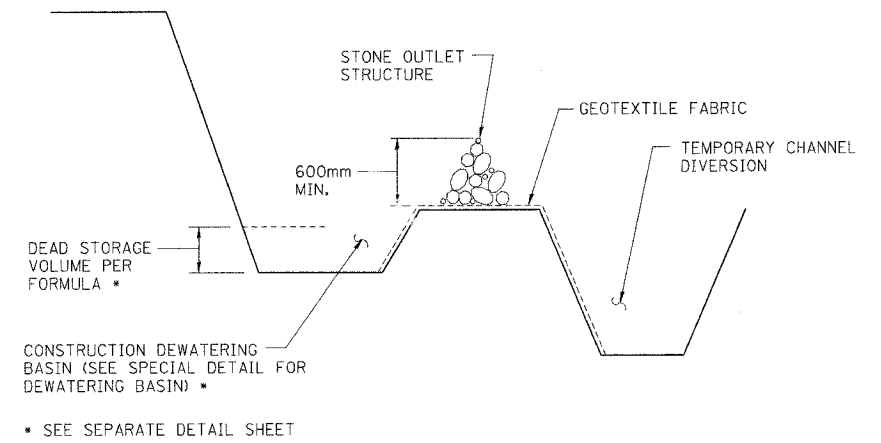
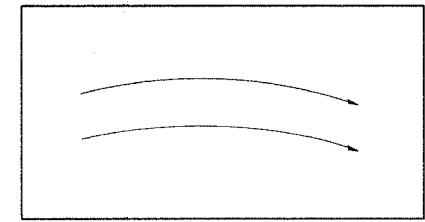
CONSTRUCTION SEQUENCE

1. INSTALL SILT FENCE. EXCAVATE TEMPORARY CHANNEL DIVERSION - DO NOT BREAK THROUGH EXISTING EARTH PLUG AT UPSTREAM AND DOWN STREAM ENDS. LINE CHANNEL WITH GEOTEXTILE FABRIC.
2. EXCAVATE DOWNSTREAM EARTH PLUG, ALLOW WATER LEVELS TO EQUALIZE.
3. EXCAVATE UPSTREAM EARTH PLUG.
4. CONSTRUCT UPSTREAM DAM IN ACCORDANCE WITH DETAIL.
5. CONSTRUCT DOWNSTREAM DAM IN ACCORDANCE WITH DETAIL.
6. CONSTRUCT DEWATERING DISCHARGE BASIN. DEWATER PROPOSED CULVERT LOCATION BY PUMPING INTO DISCHARGE BASIN ONLY.
7. CONSTRUCT PROPOSED CULVERT AND ANY REQUIRED STABILIZATION BOTH UPSTREAM AND DOWNSTREAM, INCLUDING CHANNEL TRANSITIONS.
8. REMOVE (FILL) DEWATERING DISCHARGE BASIN.
9. REMOVE DOWNSTREAM DAM, ALLOW WATER LEVELS TO EQUALIZE.
10. REMOVE UPSTREAM DAM.
11. CONSTRUCT EARTH PLUGS, UTILIZE SALVAGED RIPRAP FROM DAMS.
12. FILL CHANNEL PER EMBANKMENT SPECIFICATIONS.

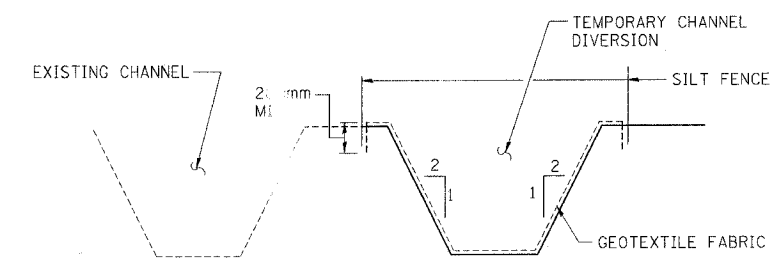


PLAN
TEMPORARY CHANNEL DIVERSION

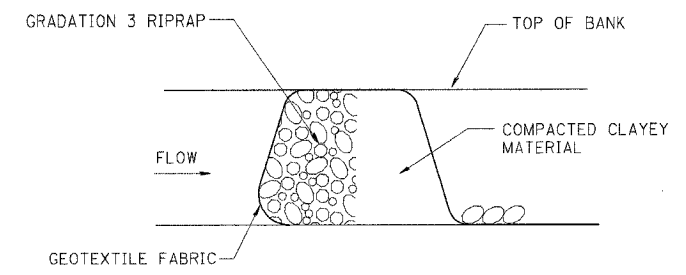
STANDARD SYMBOL



SECTION A-A



SECTION B-B



SECTION C-C

ED-6

REVISIONS		ILLINOIS DEPARTMENT OF TRANSPORTATION F.A.I. ROUTE 80/94 (INTERSTATE 80/294)
NAME	DATE	
J.P.W.	1/19/04	EROSION AND SEDIMENT CONTROLS TEMPORARY CHANNEL DIVERSION

DATE: JULY 18, 2005
DRAWN BY: JPW
CHECKED BY: RCH

McDonough Associates Inc.
Engineers / Architects