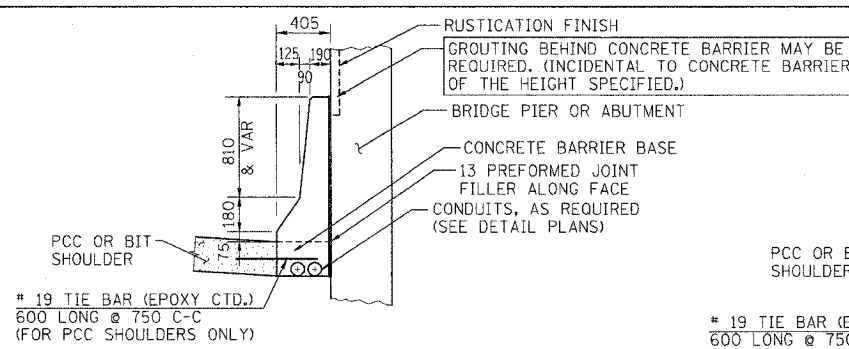
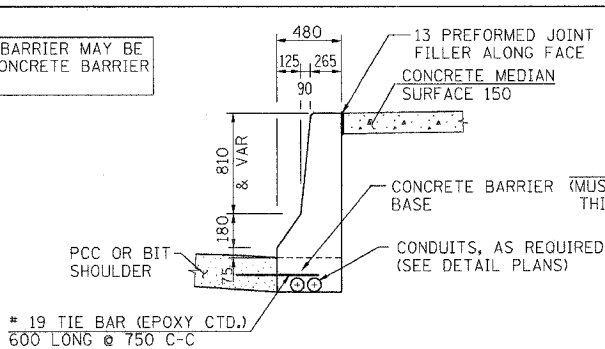


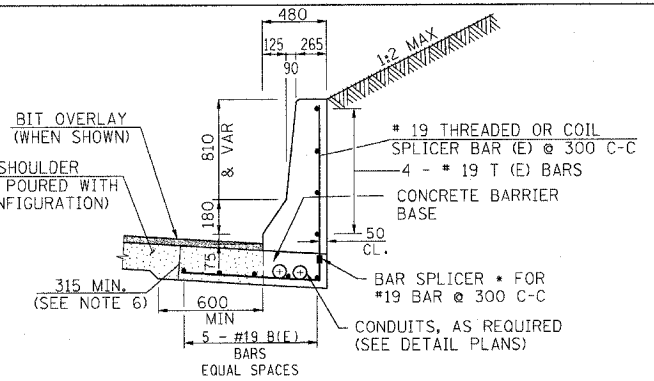
|                       |         |                           |              |           |
|-----------------------|---------|---------------------------|--------------|-----------|
| F.A.I. RTE.           | SECTION | COUNTY                    | TOTAL SHEETS | SHEET NO. |
| 80/94                 | *       | COOK                      | 231          | 167       |
| STA.                  |         | TO STA.                   |              |           |
| FED. ROAD DIST. NO. 1 |         | ILLINOIS FED. AID PROJECT |              |           |
| * (0203.1 & 0304) R-6 |         | CONTRACT # 62105          |              |           |



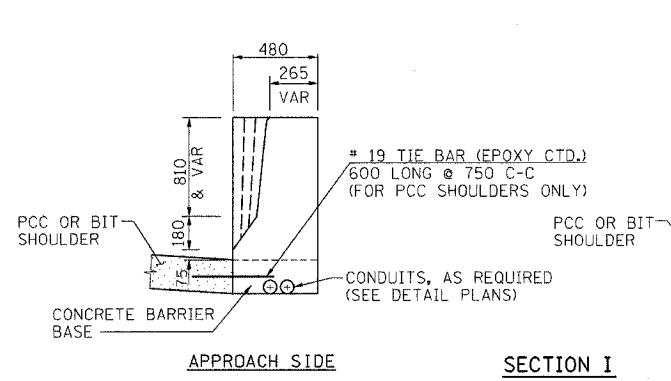
**SECTION F**  
CONC BAR 1F 1065 HT  
CONCRETE BARRIER, SINGLE FACE,  
1065 HEIGHT



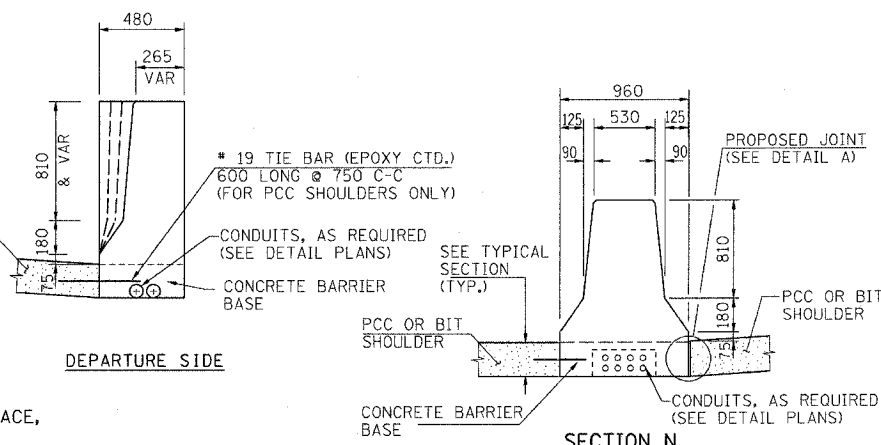
**SECTION G**  
CONC BAR 1F 1065 HT  
CONCRETE BARRIER, SINGLE FACE,  
1065 HEIGHT



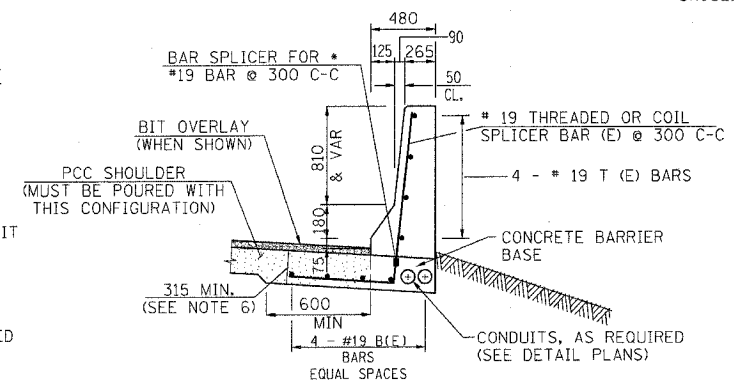
**SECTION H**  
CONC BAR 1F 1065 HT REIN  
CONCRETE BARRIER, SINGLE FACE,  
1065 HEIGHT, REINFORCED  
CUT SECTION



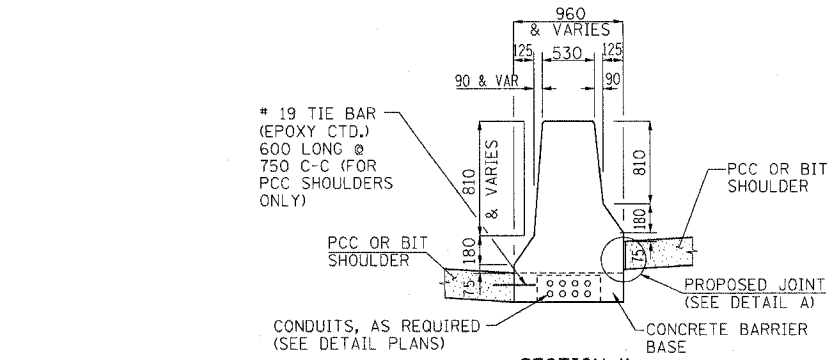
**SECTION I**  
CONC BAR 1F 1065 HT  
CONCRETE BARRIER, SINGLE FACE,  
1065 HEIGHT



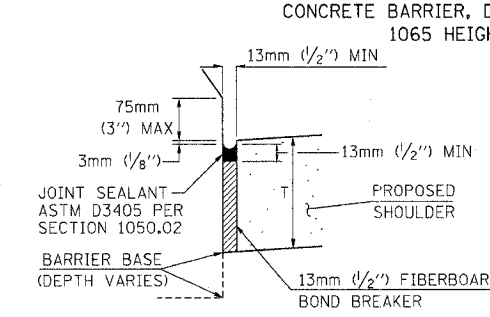
**SECTION N**  
CONC BAR 2F 1065 HT  
CONCRETE BARRIER, DOUBLE FACE,  
1065 HEIGHT



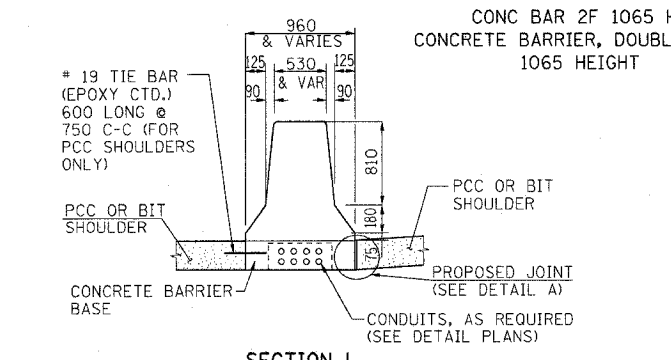
**SECTION J**  
CONC BAR 1F 1065 HT REIN  
CONCRETE BARRIER, SINGLE FACE,  
1065 HEIGHT, REINFORCED  
FILL SECTION



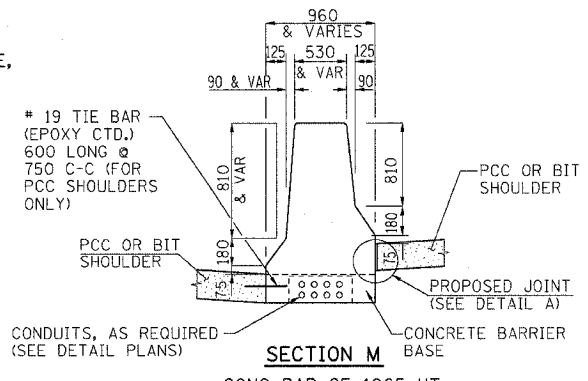
**SECTION K**  
CONC BAR 2F 1065 HT  
CONCRETE BARRIER, DOUBLE FACE,  
1065 HEIGHT



**DETAIL A**



**SECTION L**  
CONC BAR 2F 1065 HT  
CONCRETE BARRIER, DOUBLE FACE,  
1065 HEIGHT

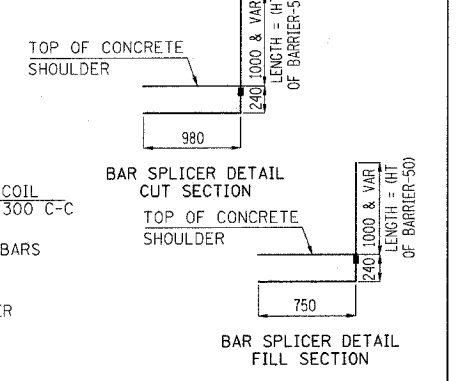


**SECTION M**  
CONC BAR 2F 1065 HT  
CONCRETE BARRIER, DOUBLE FACE,  
1065 HEIGHT

\* THE BAR SPLICER SHALL BE CAPABLE OF DEVELOPING A MINIMUM OF 125% OF THE YIELD STRENGTH OF A #19 BAR

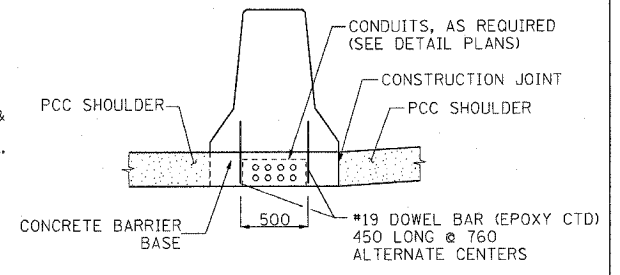
| REINFORCING BARS<br>6.1 m SECTION  |      |      |        |       |
|------------------------------------|------|------|--------|-------|
| BAR                                | NO.  | SIZE | LENGTH | SHAPE |
| B(E)                               | 5    | #19  | 6.00 m | —     |
| T(E)                               | 4    | #19  | 6.00 m | —     |
| REINFORCING BARS<br>(EPOXY COATED) |      |      | Kg     | 121   |
| BAR SPLICER                        | EACH |      |        | 21    |

\*\* LONGITUDINAL BARS SHOULD NOT EXTEND THROUGH JOINTS.



| REINFORCING BARS<br>6.1 m SECTION  |      |      |        |       |
|------------------------------------|------|------|--------|-------|
| BAR                                | NO.  | SIZE | LENGTH | SHAPE |
| B(E)                               | 4    | #19  | 6.00 m | —     |
| T(E)                               | 4    | #19  | 6.00 m | —     |
| REINFORCING BARS<br>(EPOXY COATED) |      |      | Kg     | 108   |
| BAR SPLICER                        | EACH |      |        | 21    |

\*\* LONGITUDINAL BARS SHOULD NOT EXTEND THROUGH JOINTS.



**OPTIONAL CONFIGURATION  
DOUBLE FACE BARRIER ON PCC SHOULDER**  
ALL DIMENSIONS IN MILLIMETERS  
UNLESS OTHERWISE SHOWN. **MD-8**

- LEGEND:**  
PAY LIMITS OF BITUMINOUS OR PCC SHOULDERS.
- NOTES:**
- FOR ADDITIONAL CONCRETE BARRIER DETAILS SEE STANDARDS 637001 & 637006.
  - FOR ADDITIONAL SHOULDER DETAILS SEE TYPICAL SECTIONS, PIPE UNDERDRAIN & SUBGRADE DETAILS FOR OPEN AND CLOSED DRAINAGE SYSTEMS, P.C.C SHOULDER DETAILS AND/OR STANDARDS 601001, 482006, 483001 & 482001 AS APPLICABLE.
  - A 25 RADIUS CAN BE SUBSTITUTED FOR THE 13 CHAMFER AT THE TOP OF THE BARRIER WALL.
  - FOR BITUMINOUS SHOULDERS -- DEPTH "T" EQUALS 450 MINIMUM.
  - FOR PCC SHOULDERS -- DEPTH "T" SHALL BE 255 MINIMUM OR THE SHOULDER DEPTH IF GREATER.
  - THE THICKENED PCC SHOULDER FOR THE REINFORCED CONCRETE BARRIER SECTION SHALL BE INCLUDED IN THE COST OF THE CONCRETE BARRIER OF THE TYPE INVOLVED.
  - ALL REINFORCING BARS, BAR SPLICERS, TIE BARS AND DOWEL BARS SHALL BE SEATED IN THE FINAL POSITION PRIOR TO THE CONCRETE OPERATIONS. BARS CANNOT BE MUCKED INTO PLACE.
  - THE FURNISHING AND PLACING OF TIE BARS AND DOWEL BARS SHALL BE INCLUDED IN THE COST OF PCC SHOULDER OF THE THICKNESS SPECIFIED.
  - THE FURNISHING AND PLACING OF BAR SPLICERS, TIE BARS AND DOWEL BARS SHALL BE INCLUDED IN THE COST OF THE PCC SHOULDER OF THE THICKNESS SPECIFIED.
  - THE CONDUIT LOCATIONS SHOWN ARE TYPICAL. ADDITIONAL CONDUITS MAY BE REQUIRED. FOR THE SIZE, LOCATION, AND DETAILS, SEE THE ELECTRICAL AND/OR SURVEILLANCE PLANS. THE FURNISHING AND PLACING OF CONDUITS OF THE SIZE SPECIFIED SHALL BE PAID FOR SEPARATELY.

| REVISIONS |          |
|-----------|----------|
| NAME      | DATE     |
| MDV       | 01/30/04 |
| MRN       | 3/29/04  |
| MDV       | 8/25/04  |
| MRN       | 4/20/05  |
| NLP       | 8/04/05  |

ILLINOIS DEPARTMENT OF TRANSPORTATION  
F.A.I. ROUTE 80/94 (KINGERY EXPRESSWAY)

**CONCRETE BARRIER DETAILS  
1065 MM WALL**

SCALE NONE  
DATE 10/03  
DRAWN BY ACE/CAD  
CHECKED BY

