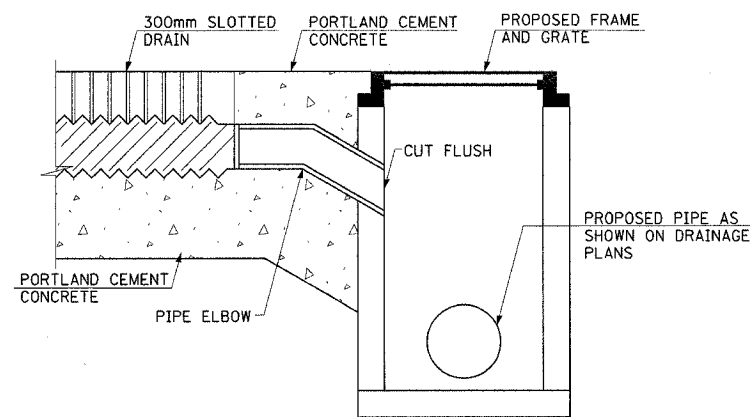
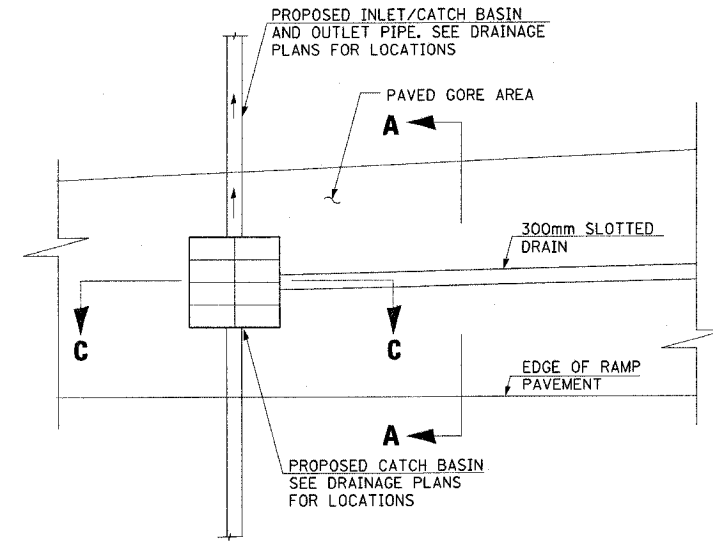


ALL DIMENSIONS IN MILLIMETERS  
UNLESS OTHERWISE NOTED

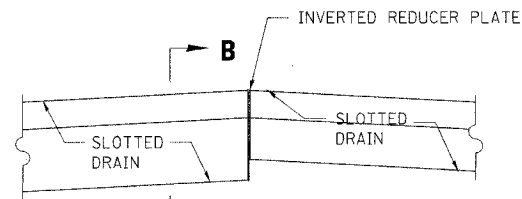
F.A.I. RTE. 80/94	SECTION *	COUNTY COOK	TOTAL SHEETS 231	SHEET NO. 179
STA.		TO STA.		
FED. ROAD DIST. NO. 1		ILLINOIS	FED. AID PROJECT	
*(0203.1 & 0304) R-6		CONTRACT # 62105		



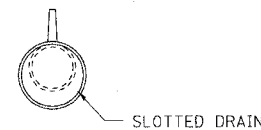
**SECTION C-C**  
CONNECTION TO PROPOSED CATCH BASIN



**PLAN**

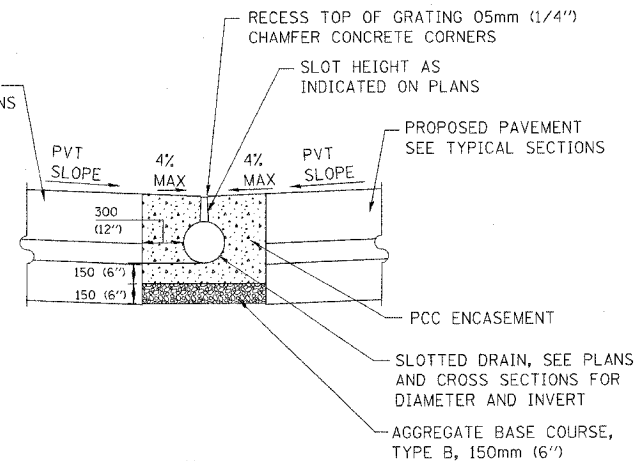


**INVERTED REDUCER PLATE**  
COST INCLUDED IN THE  
UNIT PRICE OF SLOTTED DRAIN



**SECTION B-B**

PROPOSED PAVEMENT  
SEE TYPICAL SECTIONS



**SLOTTED DRAIN  
TYPICAL SECTION A-A**

SEE PLANS FOR ADJACENT GORE AREA  
AND PAVEMENT SLOPES

**NOTES:**

- ALL SLOTTED DRAINS ARE 300mm (12 IN) DIAMETER. SLOT WIDTH SHALL BE 44mm (1-3/4 IN.). SPACER BARS SHALL BE 4.7mm (3/16 IN.) SOLID WEB SPACERS ON 150mm (6 IN. CENTERS) FOR THE FULL DEPTH OF THE GRATING.
- THE HEIGHT OF THE SLOT CAN BE VARIED FROM 60mm TO 300mm MAX. IN ORDER TO INCREASE SLOPE AND VELOCITY OF PIPE PROVIDING SELF CLEANING ABILITY.
- WHEN CONSTANT HEIGHT OF SLOT IS SPECIFIED, IT WILL BE 150mm. WHEN VARIABLE HEIGHT SLOT IS USED, UPSTREAM INVERT TO BE 60mm OR APPROPRIATE DEPTH TO MAINTAIN 60mm MIN. HEIGHT OF SLOT.
- THE UPSTREAM END OF EACH SLOTTED DRAIN INSTALLATION SHALL BE SEALED WITH A WELDED END PLATE IN ACCORDANCE WITH MANUFACTURER'S SPECIFICATIONS.
- THE SLOTTED DRAIN SHALL BE INSTALLED IN A TRENCH EXCAVATED TO THE REQUIRED GRADE, AS SHOWN IN SECTIONS, WIDE ENOUGH TO ACCOMMODATE PIPEDRAIN. IF TRENCH IS EXCAVATED TOO DEEP, ADDITIONAL DEPTH SHALL BE FILLED WITH APPROVED FINE AGGREGATE AND COMPACTED TO THE SATISFACTION OF THE ENGINEER.
- CONNECTION TO EXISTING AND PROPOSED DRAINAGE STRUCTURES IS INCLUDED IN THE UNIT PRICE OF THE SLOTTED DRAIN. ALL MATERIALS REQUIRED FOR CONNECTION INCLUDED IN UNIT PRICE OF SLOTTED DRAIN.
- PRIOR TO BACKFILLING THE SLOTTED DRAIN SHALL BE COVERED TO PREVENT THE INTRUSION OF FOREIGN MATERIAL DURING BACKFILLING AND PAVING OPERATIONS.

**SLOTTED DRAIN RAMP H AND I-80WB GORE**

SLOTTED DRAIN STATION	SLOTTED DRAIN OFFSET	TOP OF GRATING	SLOTTED DRAIN INVERT
130+982.00	5.20 LT	183.603	183.003
130+980.00	5.24 LT	183.590	182.997
130+975.00	5.35 LT	183.559	182.982
130+970.00	5.45 LT	183.532	182.967
130+965.00	5.57 LT	183.508	182.952
130+960.00	5.57 LT	183.483	182.937
130+955.00	5.57 LT	183.461	182.922
130+950.00	5.58 LT	183.443	182.907
130+945.00	5.58 LT	183.427	182.892
130+940.00	5.58 LT	183.416	182.877
130+935.00	5.61 LT	183.408	182.862
130+930.00	5.61 LT	183.403	182.847
130+925.00	5.61 LT	183.401	182.832
130+920.00	5.59 LT	183.402	182.817
130+918.38	5.57 LT	183.399	182.812

**SLOTTED DRAIN RAMP L AND I80 GORE**

SLOTTED DRAIN STATION	SLOTTED DRAIN OFFSET	TOP OF GRATING	SLOTTED DRAIN INVERT
3+371.05	19.61 RT	183.595	183.235
3+376.76	19.6 RT	183.607	183.218
3+382.88	19.77 RT	183.619	183.200
3+388.93	19.93 RT	183.631	183.182
3+394.93	20.09 RT	183.642	183.164
3+400.86	20.25 RT	183.654	183.146
3+406.74	20.41 RT	183.666	183.128
3+412.57	20.56 RT	183.677	183.111
3+420.00	20.77 RT	183.690	183.089

**SLOTTED DRAIN RAMP N AND I-80WB GORE**

SLOTTED DRAIN STATION	SLOTTED DRAIN OFFSET	TOP OF GRATING	SLOTTED DRAIN INVERT
3+827.44	18.93 LT	183.822	183.427
3+830.00	18.95 LT	183.779	183.419
3+835.00	18.99 LT	183.793	183.404
3+840.00	19.04 LT	183.807	183.389
3+845.00	19.08 LT	183.821	183.374
3+850.00	19.12 LT	183.835	183.359
3+855.00	19.17 LT	183.850	183.344
3+860.00	19.21 LT	183.855	183.329
3+865.00	19.25 LT	183.878	183.314
3+870.00	19.29 LT	183.892	183.299
3+874.40	19.33 LT	183.904	183.286

DD-3

REVISIONS		ILLINOIS DEPARTMENT OF TRANSPORTATION F.A.I. ROUTE 80/94 (KINGERY EXPRESSWAY)
NAME	DATE	

**DRAINAGE DETAILS III**

SCALE: DATE 06/04      DRAWN BY ACE/CAD      CHECKED BY

**AMERICAN**  
CONSULTING ENGINEERS